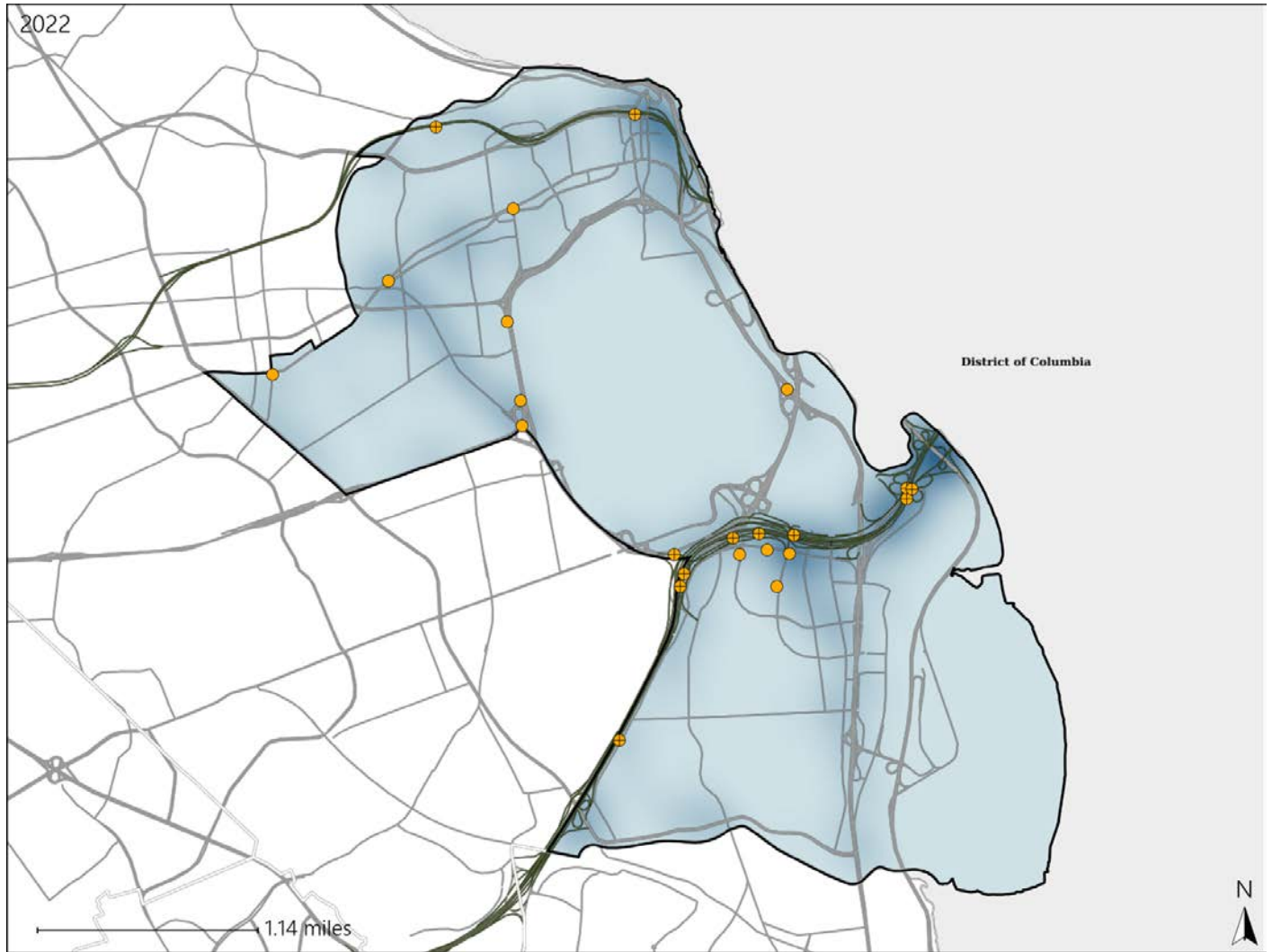


Virginia House District 2 Crash Statistics

Report Generated May, 2023

	Count	Highest Time Period(s)	Highest Day(s)	Highest Month(s)
Fatal Crashes	0	-	-	-
Resulting Fatalities	0	-	-	-
Serious Injury Crashes	23	6:00pm - 8:59pm (30%)	Friday (26%)	October (17%)



House District 2 Crashes

Interstate Crashes

- Fatal
- Serious Injury

Non-interstate Crashes

- Fatal
- Serious Injury

The blue gradient represents the density of all crashes.

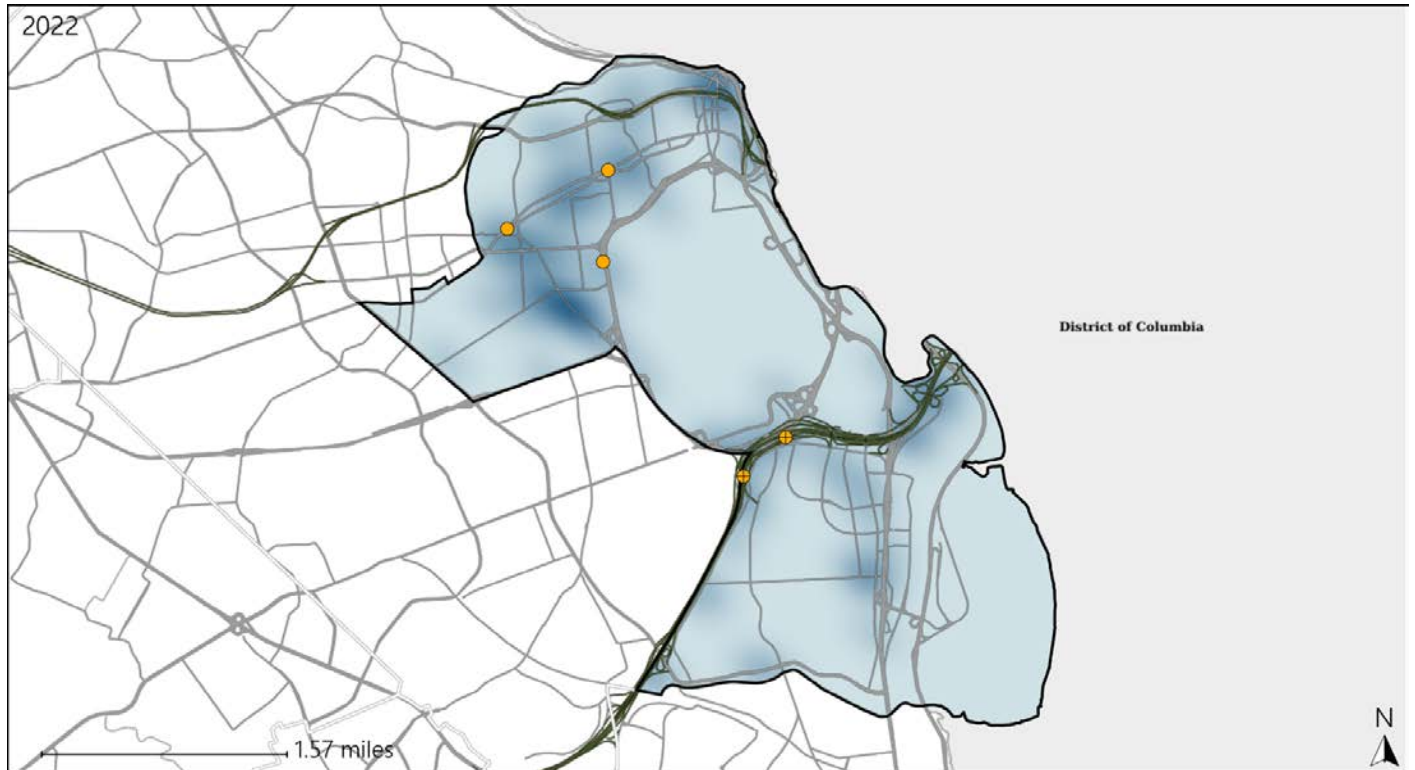


Available Crash Data - Calendar Year (CY)	CY 2019	CY 2020	CY 2021	CY 2022
Total Crashes	1196	688	881	961
Fatal Crashes	2	1	1	0
Injury Crashes	348	197	248	244

Virginia House District 2 Alcohol Crash Statistics

Report Generated May, 2023

	Count	Highest Time Period(s)	Highest Day(s)	Highest Month(s)
Fatal Crashes	0	-	-	-
Resulting Fatalities	0	-	-	-
Serious Injury Crashes	5	Midnight - 2:59am (80%)	Sunday (60%)	January (40%)



House District 2 Alcohol-Related Crashes

Interstate Crashes Non-interstate Crashes
 ● Fatal ● Fatal
 ⊕ Serious Injury ⊕ Serious Injury

The blue gradient represents the density of all alcohol-related crashes.

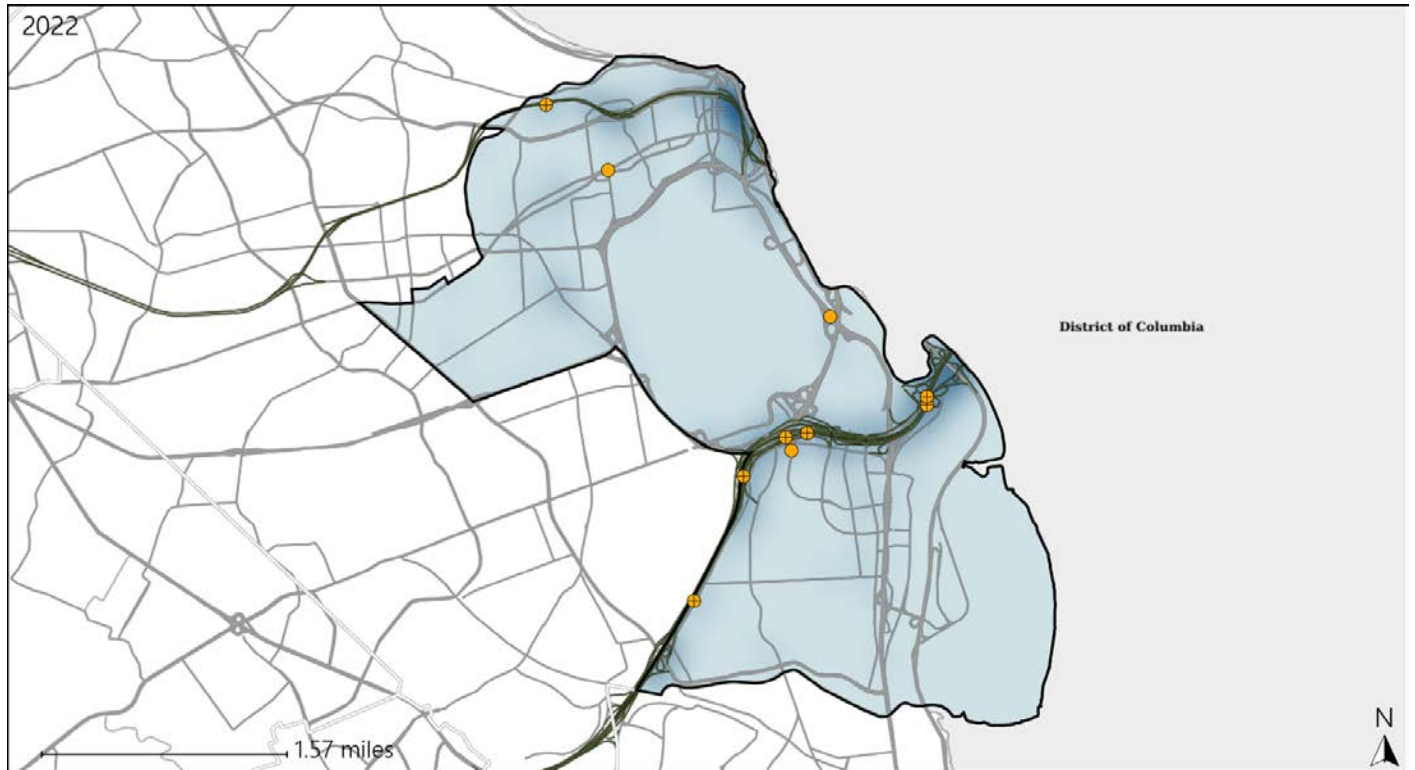


Available Crash Data - Calendar Year (CY)	CY 2019	CY 2020	CY 2021	CY 2022
Total Crashes	1196	688	881	961
Fatal Crashes	2	1	1	0
Injury Crashes	348	197	248	244
Alcohol-Related Fatal Crashes	1	0	0	0
Percent of Alcohol-Related Fatal Crashes to Total Fatal Crashes	50%	0%	0%	0%
Alcohol-Related Injury Crashes	18	16	28	27
Percent of Alcohol-Related Injury Crashes to Total Injury Crashes	5%	8%	11%	11%

Virginia House District 2 Speed Crash Statistics

Report Generated May, 2023

	Count	Highest Time Period(s)	Highest Day(s)	Highest Month(s)
Fatal Crashes	0	-	-	-
Resulting Fatalities	0	-	-	-
Serious Injury Crashes	10	6:00pm - 8:59pm (50%)	Monday (40%)	January (30%)



House District 2 Speed-Related Crashes

Interstate Crashes Non-interstate Crashes
 ● Fatal ● Fatal
 ⊕ Serious Injury ⊕ Serious Injury

The blue gradient represents the density of all speed-related crashes.

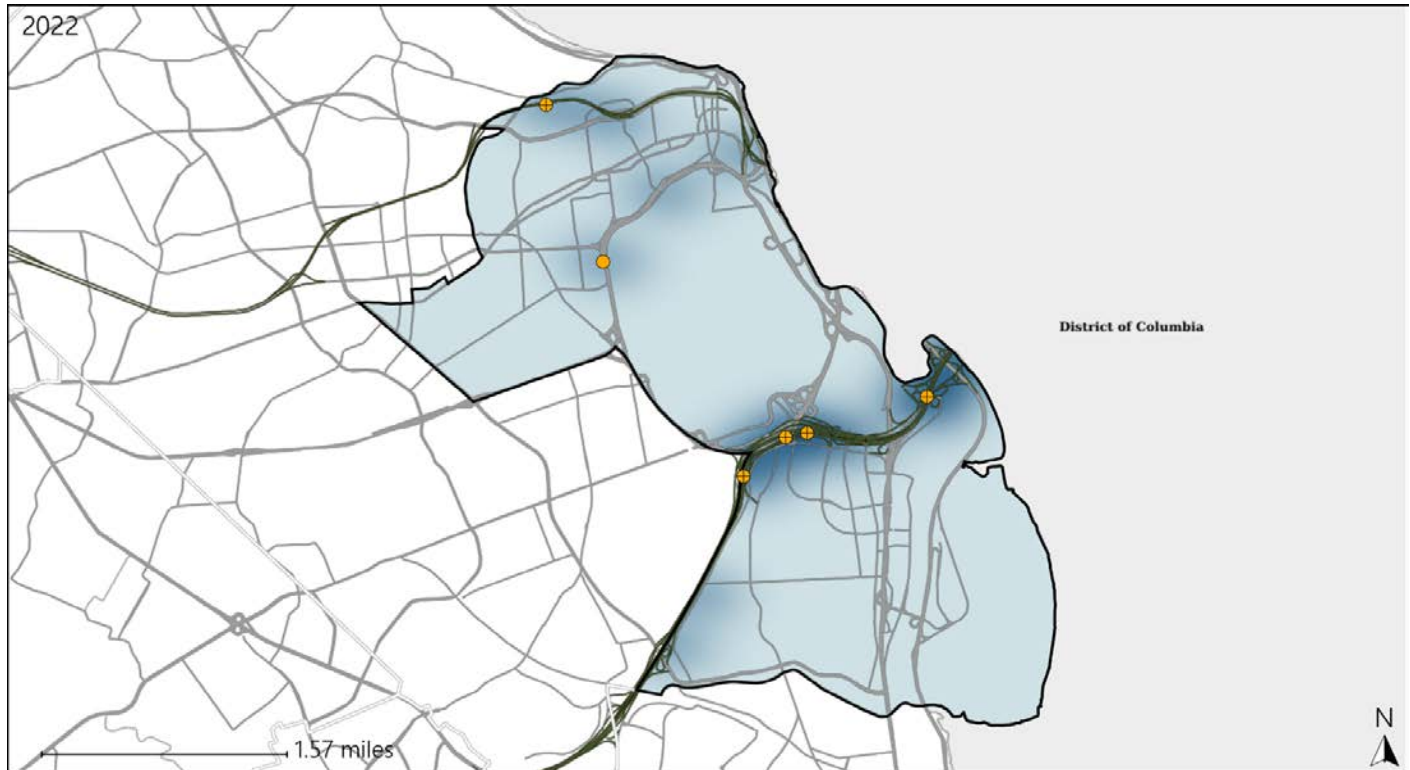


Available Crash Data - Calendar Year (CY)	CY 2019	CY 2020	CY 2021	CY 2022
Total Crashes	1196	688	881	961
Fatal Crashes	2	1	1	0
Injury Crashes	348	197	248	244
Speed-Related Fatal Crashes	1	0	0	0
Percent of Speed-Related Fatal Crashes to Total Fatal Crashes	50%	0%	0%	0%
Speed-Related Injury Crashes	66	47	65	56
Percent of Speed-Related Injury Crashes to Total Injury Crashes	19%	24%	26%	23%

Virginia House District 2 Unrestrained Crash Statistics

Report Generated May, 2023

	Count	Highest Time Period(s)	Highest Day(s)	Highest Month(s)
Fatal Crashes	0	-	-	-
Unrestrained Fatalities	0	-	-	-
Serious Injury Crashes	6	Midnight - 2:59am (50%)	Sunday (50%)	January (50%)



House District 2 Unrestrained-Related Crashes

Interstate Crashes

Non-interstate Crashes

- Fatal
- Serious Injury

- Fatal
- Serious Injury

The blue gradient represents the density of all unrestrained-related crashes.

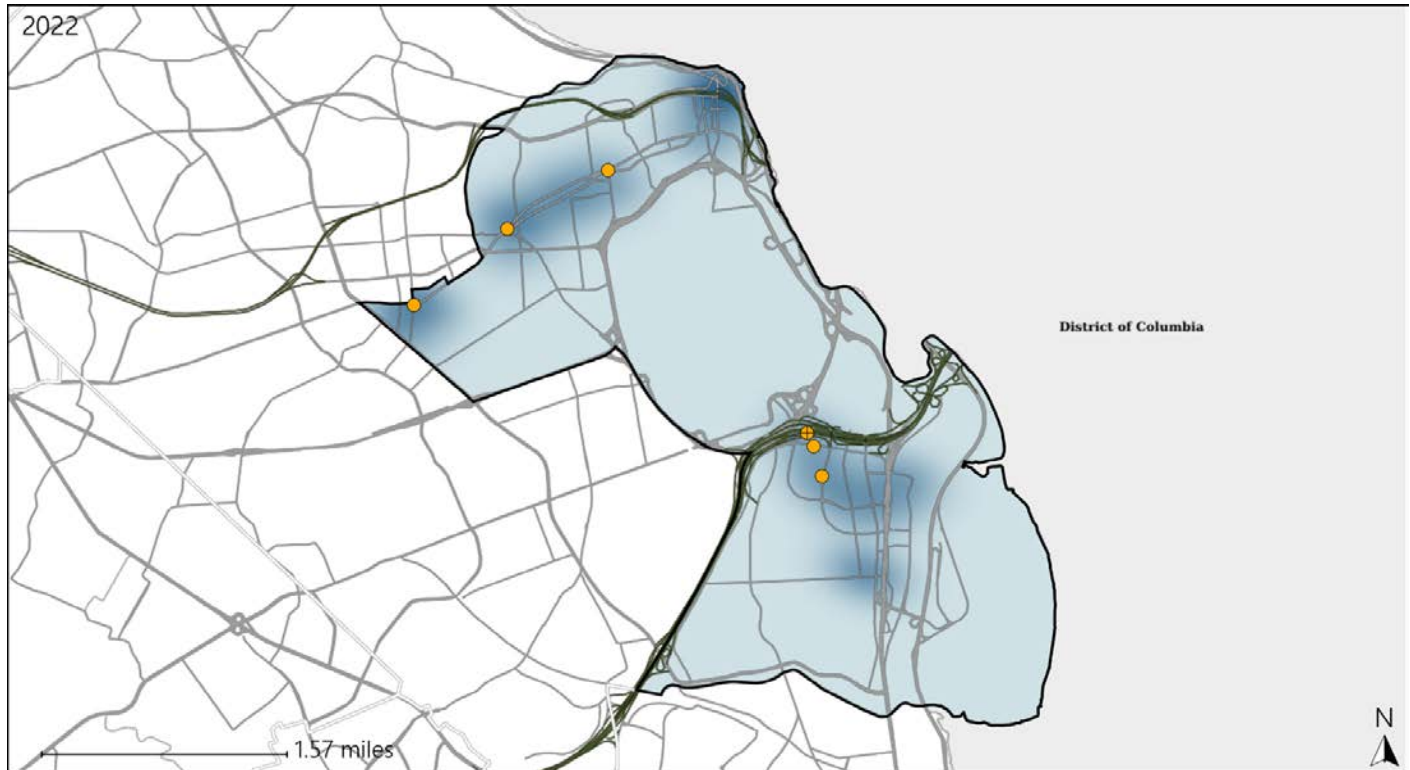


Available Crash Data - Calendar Year (CY)	CY 2019	CY 2020	CY 2021	CY 2022
Total Crashes	1196	688	881	961
Fatalities	2	1	1	0
Injuries	513	271	345	359
Unrestrained Fatalities	0	0	1	0
Percent of Unrestrained Fatalities to Total Fatalities	0%	0%	100%	0%
Unrestrained Injuries	18	8	13	19
Percent of Unrestrained Injuries to Total Injuries	4%	3%	4%	5%

Virginia House District 2 Pedestrian Crash Statistics

Report Generated May, 2023

	Count	Highest Time Period(s)	Highest Day(s)	Highest Month(s)
Fatal Crashes	0	-	-	-
Pedestrian Fatalities	0	-	-	-
Serious Injury Crashes	6	6:00pm - 8:59pm (50%)	Friday (33%)	December + July (66%)



House District 2 Pedestrian-Related Crashes

- | | |
|--------------------|------------------------|
| Interstate Crashes | Non-interstate Crashes |
| Fatal | Fatal |
| Serious Injury | Serious Injury |

The blue gradient represents the density of all pedestrian-related crashes.

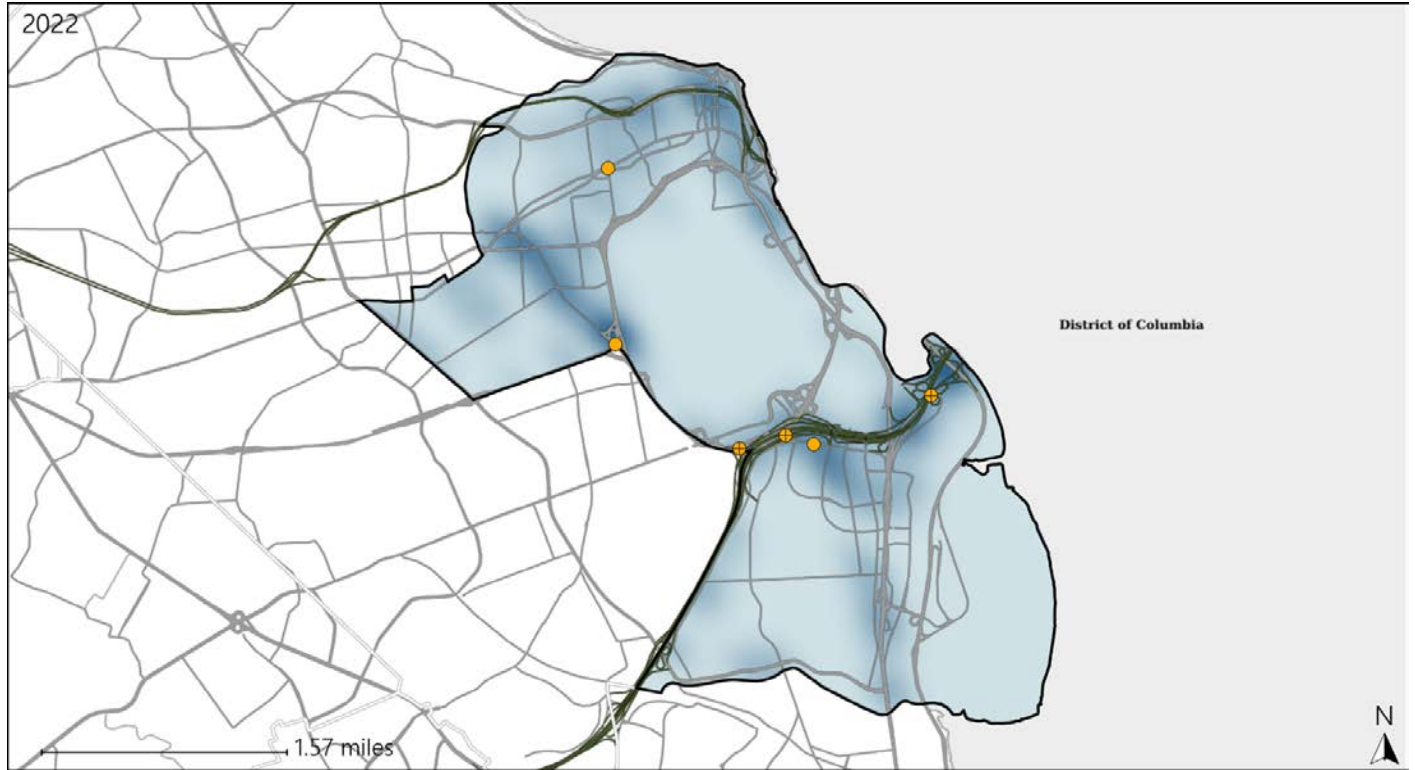


Available Crash Data - Calendar Year (CY)	CY 2019	CY 2020	CY 2021	CY 2022
Total Crashes	1196	688	881	961
Fatal Crashes	2	1	1	0
Injury Crashes	348	197	248	244
Pedestrian-Related Fatal Crashes	0	1	0	0
Percent of Pedestrian-Related Fatal Crashes to Total Fatal Crashes	0%	100%	0%	0%
Pedestrian-Related Injury Crashes	54	43	47	33
Percent of Pedestrian-Related Injury Crashes to Total Injury Crashes	16%	22%	19%	14%

Virginia House District 2 Distracted Driving Crash Statistics

Report Generated May, 2023

	Count	Highest Time Period(s)	Highest Day(s)	Highest Month(s)
Fatal Crashes	0	-	-	-
Resulting Fatalities	0	-	-	-
Serious Injury Crashes	6	9:00am - 11:59am (33%)	Friday (50%)	August (33%)



House District 2 Distracted Driving-Related Crashes

- | | |
|--------------------|------------------------|
| Interstate Crashes | Non-interstate Crashes |
| ● Fatal | ● Fatal |
| ⊕ Serious Injury | ⊕ Serious Injury |

The blue gradient represents the density of all distracted driving-related crashes.



Available Crash Data - Calendar Year (CY)	CY 2019	CY 2020	CY 2021	CY 2022
Total Crashes	1196	688	881	961
Fatal Crashes	2	1	1	0
Injury Crashes	348	197	248	244
Distracted Driving-Related Fatal Crashes	1	0	0	0
Percent of Distracted Driving-Related Fatal Crashes to Total Fatal Crashes	50%	0%	0%	0%
Distracted Driving-Related Injury Crashes	55	38	44	50
Percent of Distracted Driving-Related Injury Crashes to Total Injury Crashes	16%	19%	18%	20%