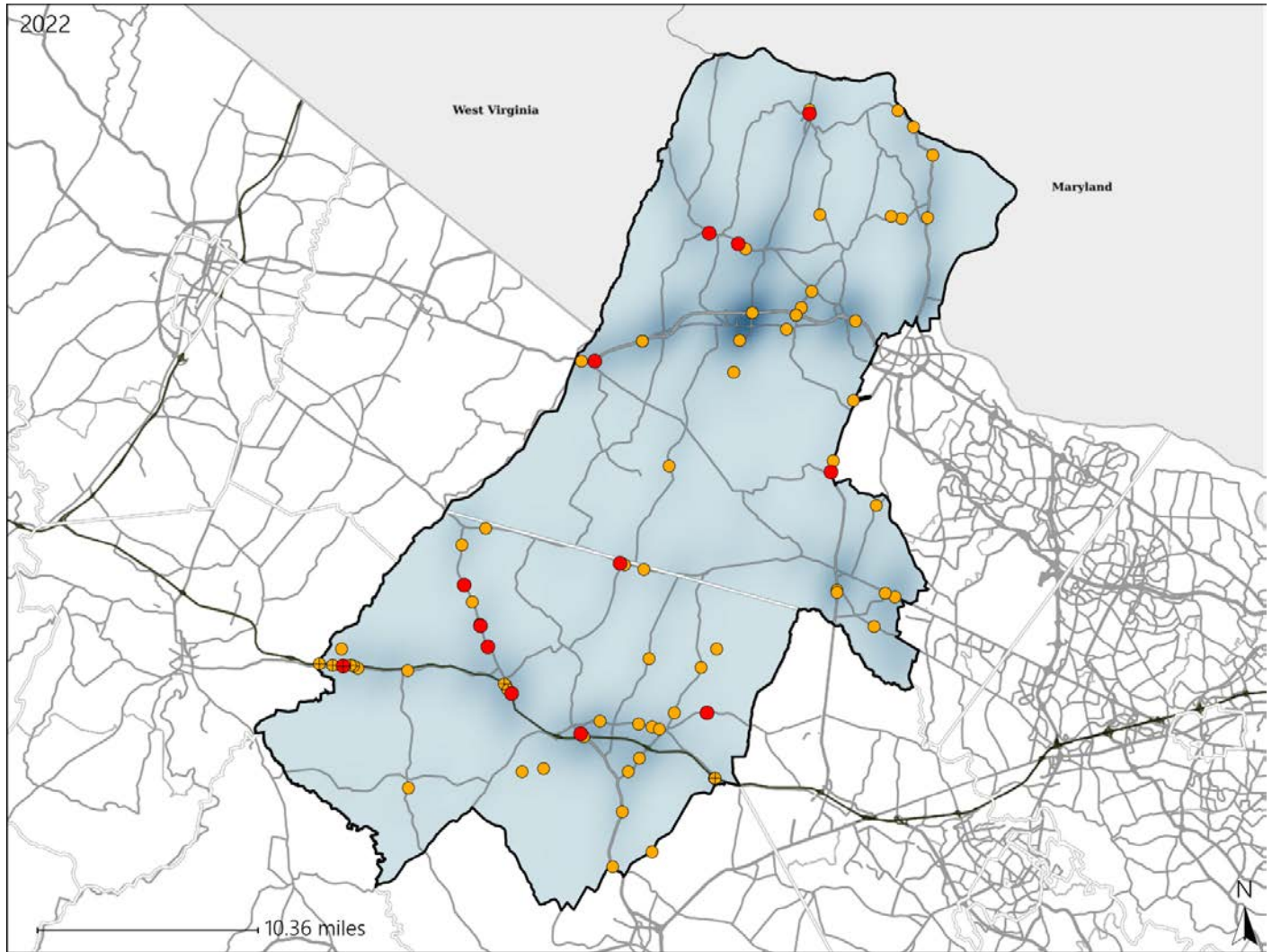


Virginia House District 30 Crash Statistics

Report Generated May, 2023

	Count	Highest Time Period(s)	Highest Day(s)	Highest Month(s)
Fatal Crashes	13	6:00pm - 8:59pm	Thursday	April + December
Resulting Fatalities	15	(38%)	(38%)	(30%)
Serious Injury Crashes	65	6:00pm - 8:59pm	Saturday	November
		(22%)	(20%)	(14%)



House District 30 Crashes

Interstate Crashes

- Fatal
- Serious Injury

Non-interstate Crashes

- Fatal
- Serious Injury

The blue gradient represents the density of all crashes.

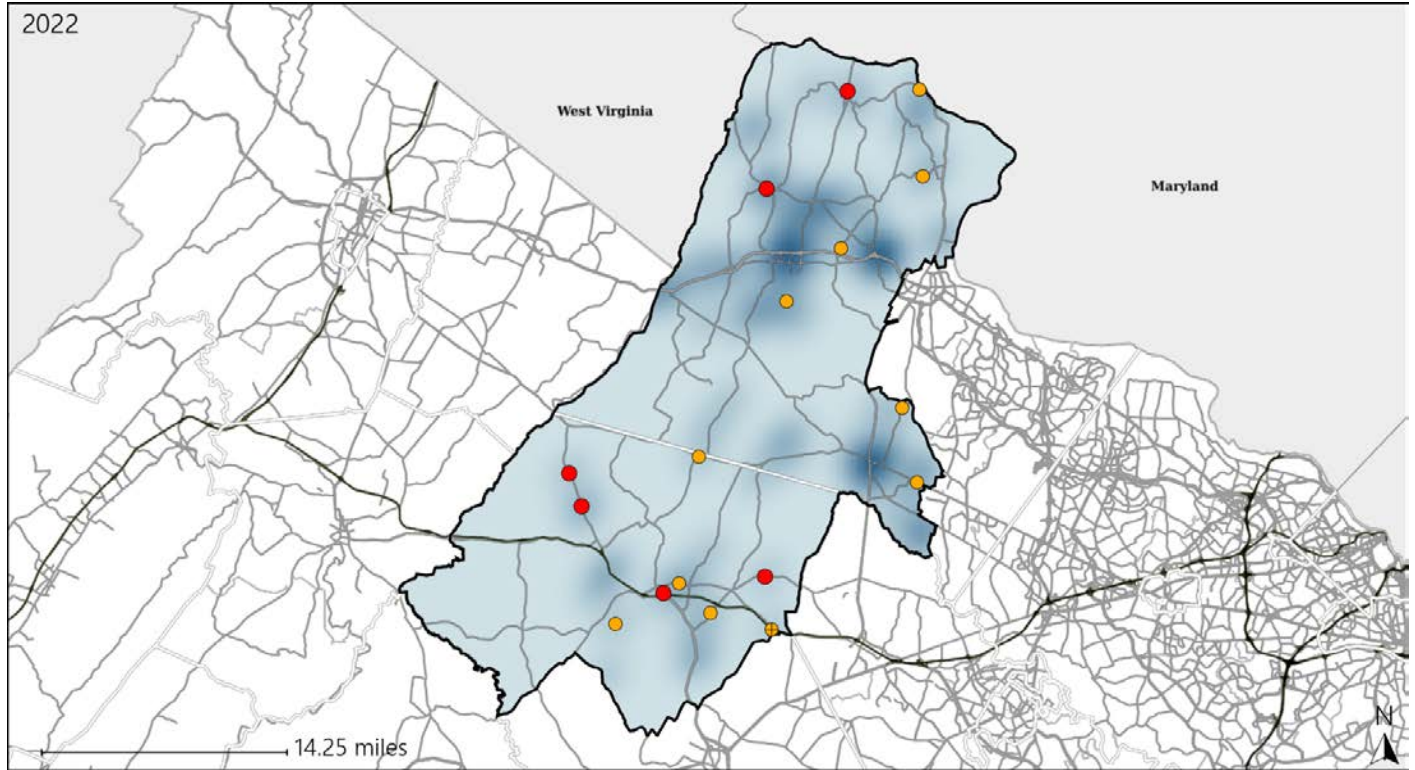


Available Crash Data - Calendar Year (CY)	CY 2019	CY 2020	CY 2021	CY 2022
Total Crashes	1584	1232	1375	1442
Fatal Crashes	7	5	8	13
Injury Crashes	374	281	276	321

Virginia House District 30 Alcohol Crash Statistics

Report Generated May, 2023

	Count	Highest Time Period(s)	Highest Day(s)	Highest Month(s)
Fatal Crashes	6	Midnight - 2:59am	Thursday	January
Resulting Fatalities	6	(50%)	(50%)	(33%)
Serious Injury Crashes	11	3:00am - 5:59am	Sunday + Wednesday	August + July
		(27%)	(54%)	(36%)



House District 30 Alcohol-Related Crashes

Interstate Crashes Non-interstate Crashes
 ● Fatal ● Fatal
 ● Serious Injury ● Serious Injury

The blue gradient represents the density of all alcohol-related crashes.

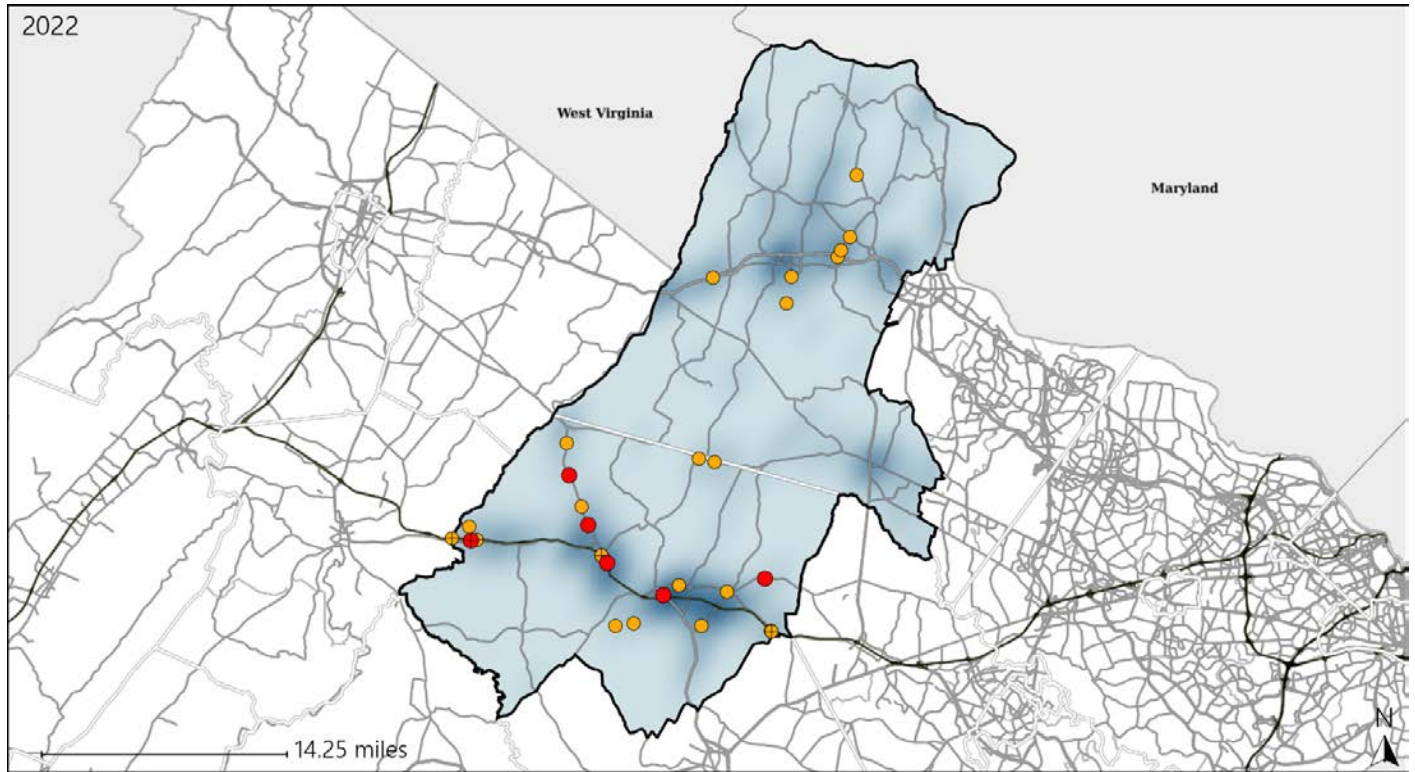


Available Crash Data - Calendar Year (CY)	CY 2019	CY 2020	CY 2021	CY 2022
Total Crashes	1584	1232	1375	1442
Fatal Crashes	7	5	8	13
Injury Crashes	374	281	276	321
Alcohol-Related Fatal Crashes	2	3	2	6
Percent of Alcohol-Related Fatal Crashes to Total Fatal Crashes	29%	60%	25%	46%
Alcohol-Related Injury Crashes	36	25	29	40
Percent of Alcohol-Related Injury Crashes to Total Injury Crashes	10%	9%	11%	12%

Virginia House District 30 Speed Crash Statistics

Report Generated May, 2023

	Count	Highest Time Period(s)	Highest Day(s)	Highest Month(s)
Fatal Crashes	6	6:00pm - 8:59pm	Thursday	September
Resulting Fatalities	8	(83%)	(50%)	(33%)
Serious Injury Crashes	23	6:00pm - 8:59pm	Saturday	August
		(35%)	(22%)	(26%)



House District 30 Speed-Related Crashes

Interstate Crashes Non-interstate Crashes
 ● Fatal ● Fatal
 ● Serious Injury ● Serious Injury

The blue gradient represents the density of all speed-related crashes.

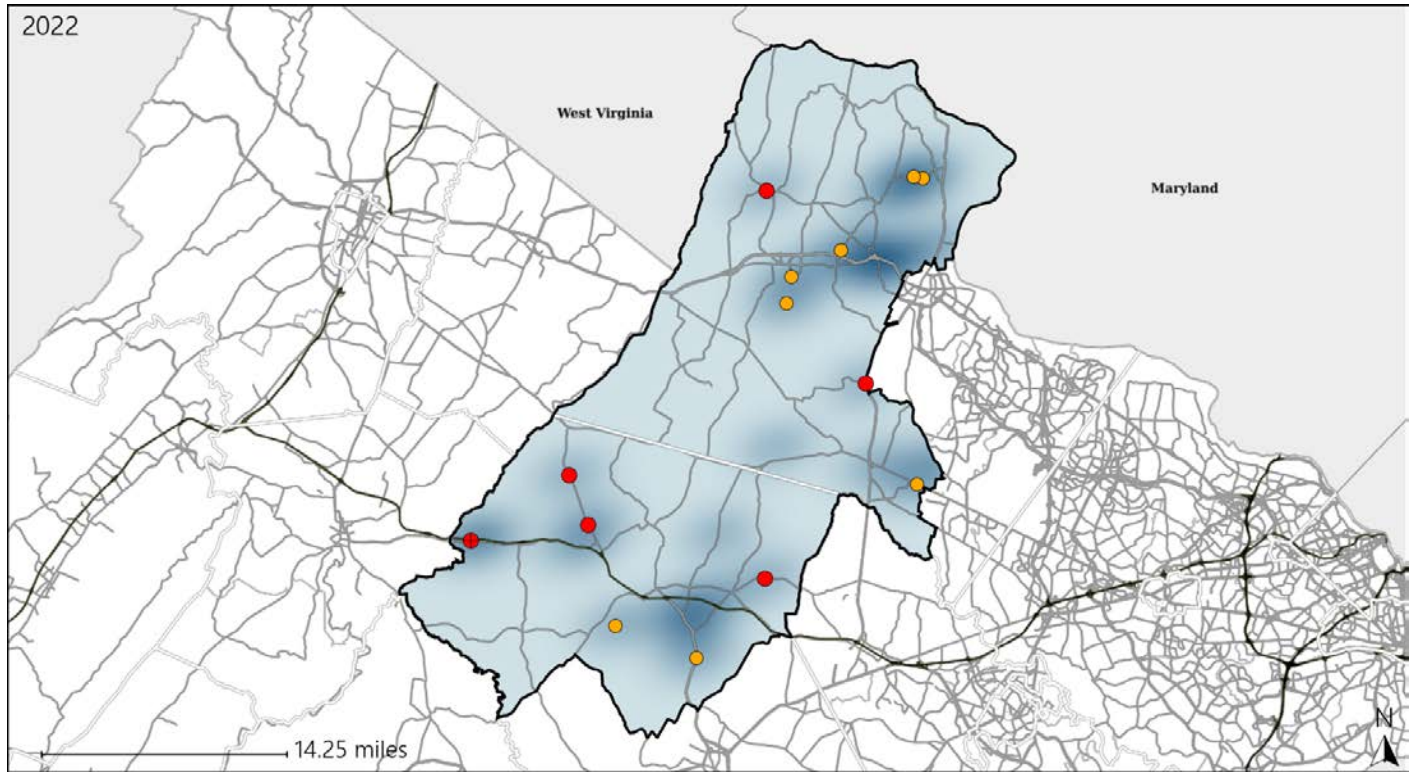


Available Crash Data - Calendar Year (CY)	CY 2019	CY 2020	CY 2021	CY 2022
Total Crashes	1584	1232	1375	1442
Fatal Crashes	7	5	8	13
Injury Crashes	374	281	276	321
Speed-Related Fatal Crashes	2	1	2	6
Percent of Speed-Related Fatal Crashes to Total Fatal Crashes	29%	20%	25%	46%
Speed-Related Injury Crashes	82	62	72	78
Percent of Speed-Related Injury Crashes to Total Injury Crashes	22%	22%	26%	24%

Virginia House District 30 Unrestrained Crash Statistics

Report Generated May, 2023

	Count	Highest Time Period(s)	Highest Day(s)	Highest Month(s)
Fatal Crashes	6	6:00pm - 8:59pm	Thursday	December • September
Unrestrained Fatalities	7	(50%)	(50%)	(66%)
Serious Injury Crashes	8	3:00am - 5:59am	Friday	August • July
		(38%)	(38%)	(50%)



House District 30 Unrestrained-Related Crashes

Interstate Crashes

- Fatal
- Serious Injury

Non-interstate Crashes

- Fatal
- Serious Injury

The blue gradient represents the density of all unrestrained-related crashes.

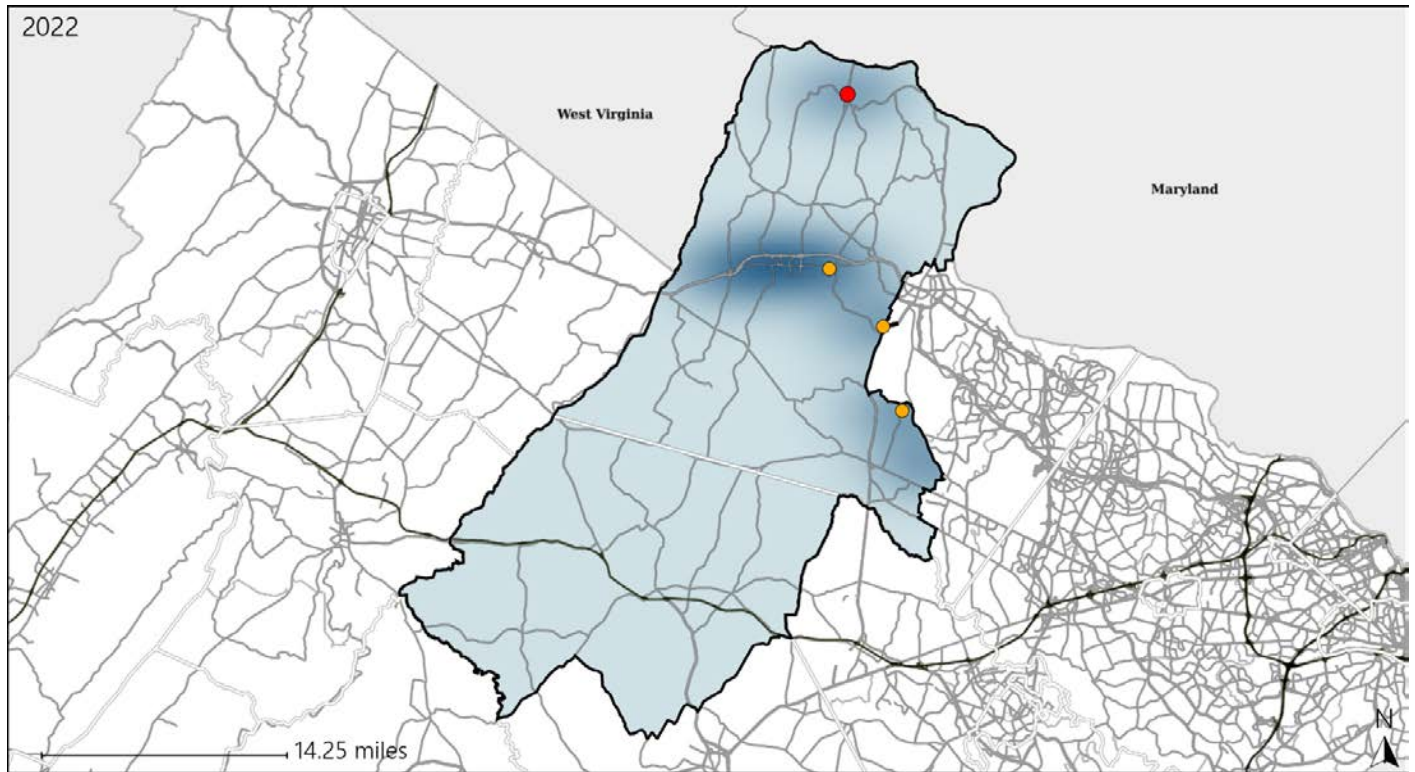


Available Crash Data - Calendar Year (CY)	CY 2019	CY 2020	CY 2021	CY 2022
Total Crashes	1584	1232	1375	1442
Fatalities	7	6	8	15
Injuries	560	421	394	471
Unrestrained Fatalities	3	1	3	7
Percent of Unrestrained Fatalities to Total Fatalities	43%	17%	38%	47%
Unrestrained Injuries	27	25	28	31
Percent of Unrestrained Injuries to Total Injuries	5%	6%	7%	7%

Virginia House District 30 Pedestrian Crash Statistics

Report Generated May, 2023

	Count	Highest Time Period(s)	Highest Day(s)	Highest Month(s)
Fatal Crashes	1	9:00pm - 11:59pm	Friday	November
Pedestrian Fatalities	1	(100%)	(100%)	(100%)
Serious Injury Crashes	3	3:00am - 5:59am 6:00am - 8:59am	Wednesday	February + November
		(66%)	(67%)	(66%)



House District 30 Pedestrian-Related Crashes

Interstate Crashes

Non-interstate Crashes

- Fatal
- ⊕ Serious Injury

- Fatal
- Serious Injury

The blue gradient represents the density of all pedestrian-related crashes.

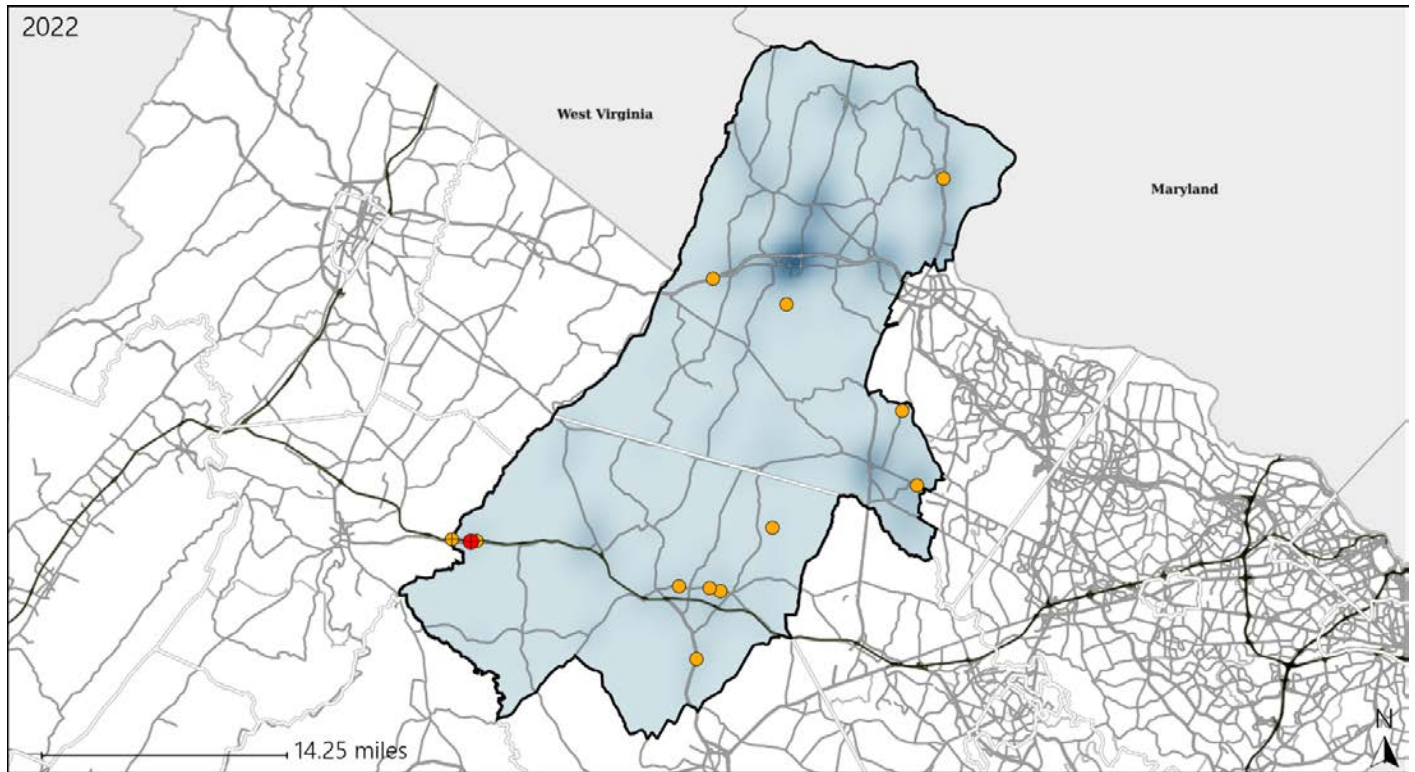


Available Crash Data - Calendar Year (CY)	CY 2019	CY 2020	CY 2021	CY 2022
Total Crashes	1584	1232	1375	1442
Fatal Crashes	7	5	8	13
Injury Crashes	374	281	276	321
Pedestrian-Related Fatal Crashes	1	0	0	1
Percent of Pedestrian-Related Fatal Crashes to Total Fatal Crashes	14%	0%	0%	8%
Pedestrian-Related Injury Crashes	8	5	5	6
Percent of Pedestrian-Related Injury Crashes to Total Injury Crashes	2%	2%	2%	2%

Virginia House District 30 Distracted Driving Crash Statistics

Report Generated May, 2023

	Count	Highest Time Period(s)	Highest Day(s)	Highest Month(s)
Fatal Crashes	1	6:00pm - 8:59pm	Thursday	September
Resulting Fatalities	2	(100%)	(100%)	(100%)
Serious Injury Crashes	12	3:00am - 5:59am 6:00am - 8:59am	Friday • Monday	November
		(50%)	(34%)	(25%)



House District 30 Distracted Driving-Related Crashes

- | | |
|--------------------|------------------------|
| Interstate Crashes | Non-interstate Crashes |
| ● Fatal | ● Fatal |
| ⊕ Serious Injury | ⊕ Serious Injury |

The blue gradient represents the density of all distracted driving-related crashes.



Available Crash Data - Calendar Year (CY)	CY 2019	CY 2020	CY 2021	CY 2022
Total Crashes	1584	1232	1375	1442
Fatal Crashes	7	5	8	13
Injury Crashes	374	281	276	321
Distracted Driving-Related Fatal Crashes	1	1	0	1
Percent of Distracted Driving-Related Fatal Crashes to Total Fatal Crashes	14%	20%	0%	8%
Distracted Driving-Related Injury Crashes	88	62	64	74
Percent of Distracted Driving-Related Injury Crashes to Total Injury Crashes	24%	22%	23%	23%