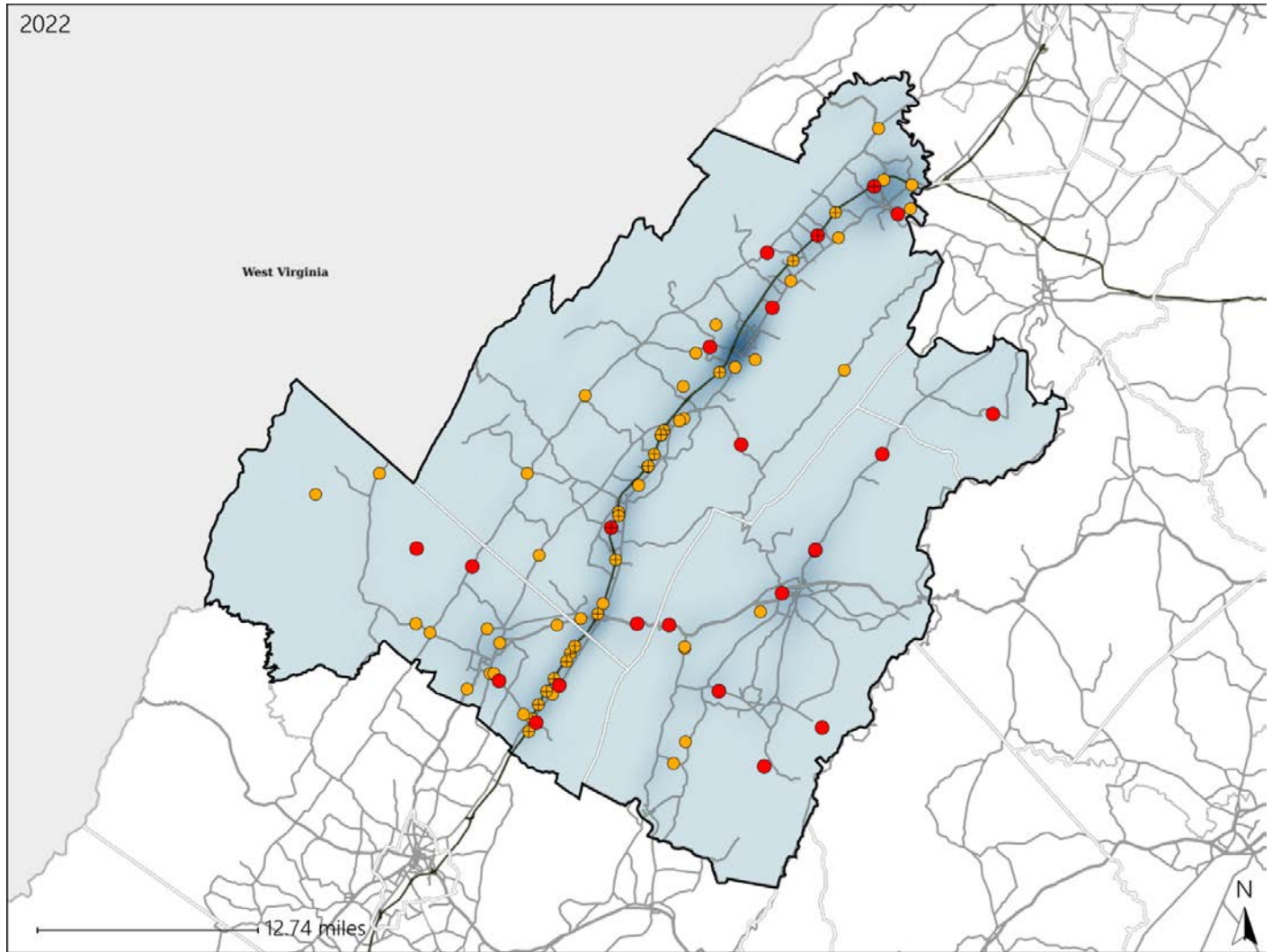


Virginia House District 33 Crash Statistics

Report Generated May, 2023

	Count	Highest Time Period(s)	Highest Day(s)	Highest Month(s)
Fatal Crashes	22	3:00pm - 5:59pm	Wednesday	June
Resulting Fatalities	23	(36%)	(36%)	(23%)
Serious Injury Crashes	61	3:00pm - 5:59pm	Monday - Saturday	June
		(26%)	(36%)	(15%)



House District 33 Crashes

Interstate Crashes

- Fatal
- Serious Injury

Non-interstate Crashes

- Fatal
- Serious Injury

The blue gradient represents the density of all crashes.

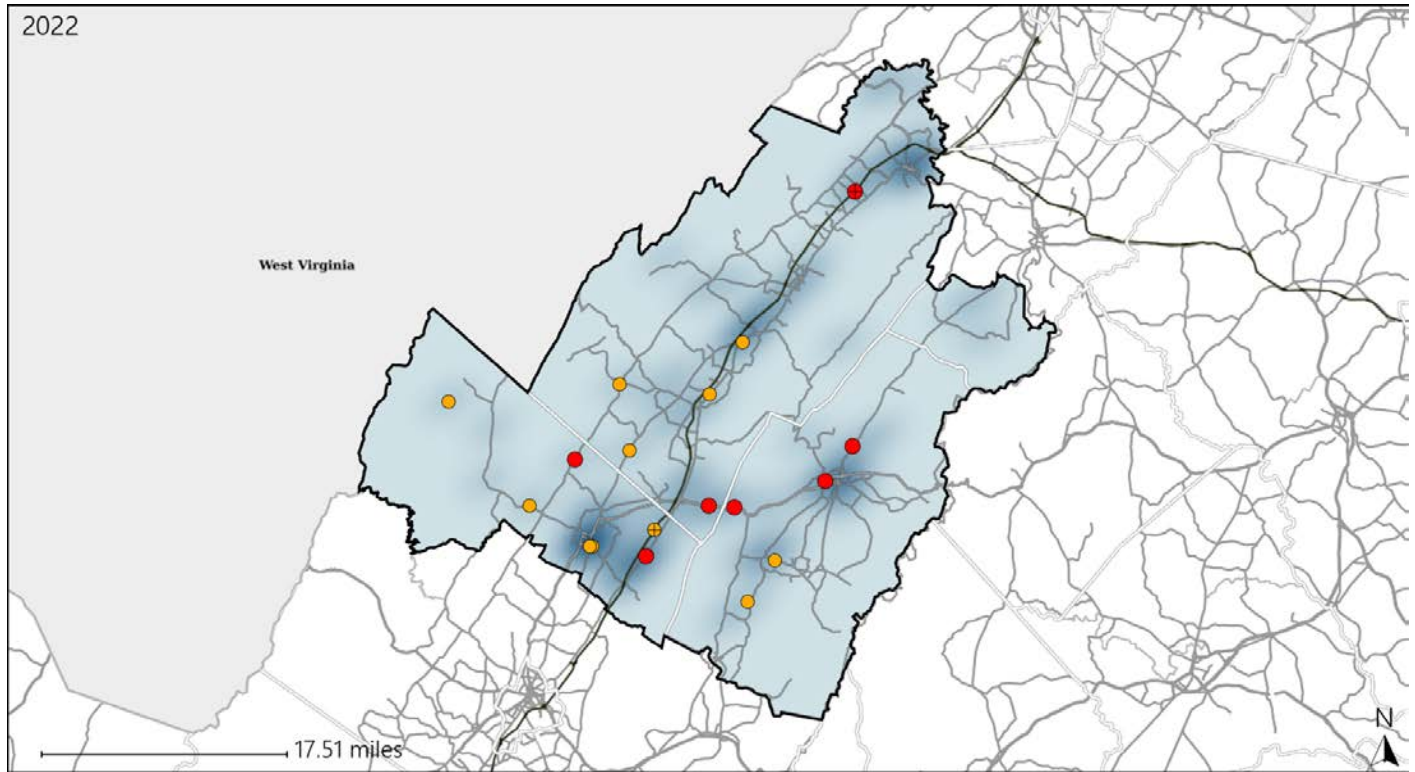


Available Crash Data - Calendar Year (CY)	CY 2019	CY 2020	CY 2021	CY 2022
Total Crashes	1109	1004	1209	1271
Fatal Crashes	10	16	11	22
Injury Crashes	313	257	325	337

Virginia House District 33 Alcohol Crash Statistics

Report Generated May, 2023

	Count	Highest Time Period(s)	Highest Day(s)	Highest Month(s)
Fatal Crashes	7	6:00pm - 8:59pm	Saturday - Tuesday	August - June
Resulting Fatalities	7	(57%)	(58%)	(58%)
Serious Injury Crashes	12	3:00pm - 5:59pm	Friday	December
		(33%)	(33%)	(25%)



House District 33 Alcohol-Related Crashes

Interstate Crashes Non-interstate Crashes
 ● Fatal ● Fatal
 ⊕ Serious Injury ⊕ Serious Injury

The blue gradient represents the density of all alcohol-related crashes.

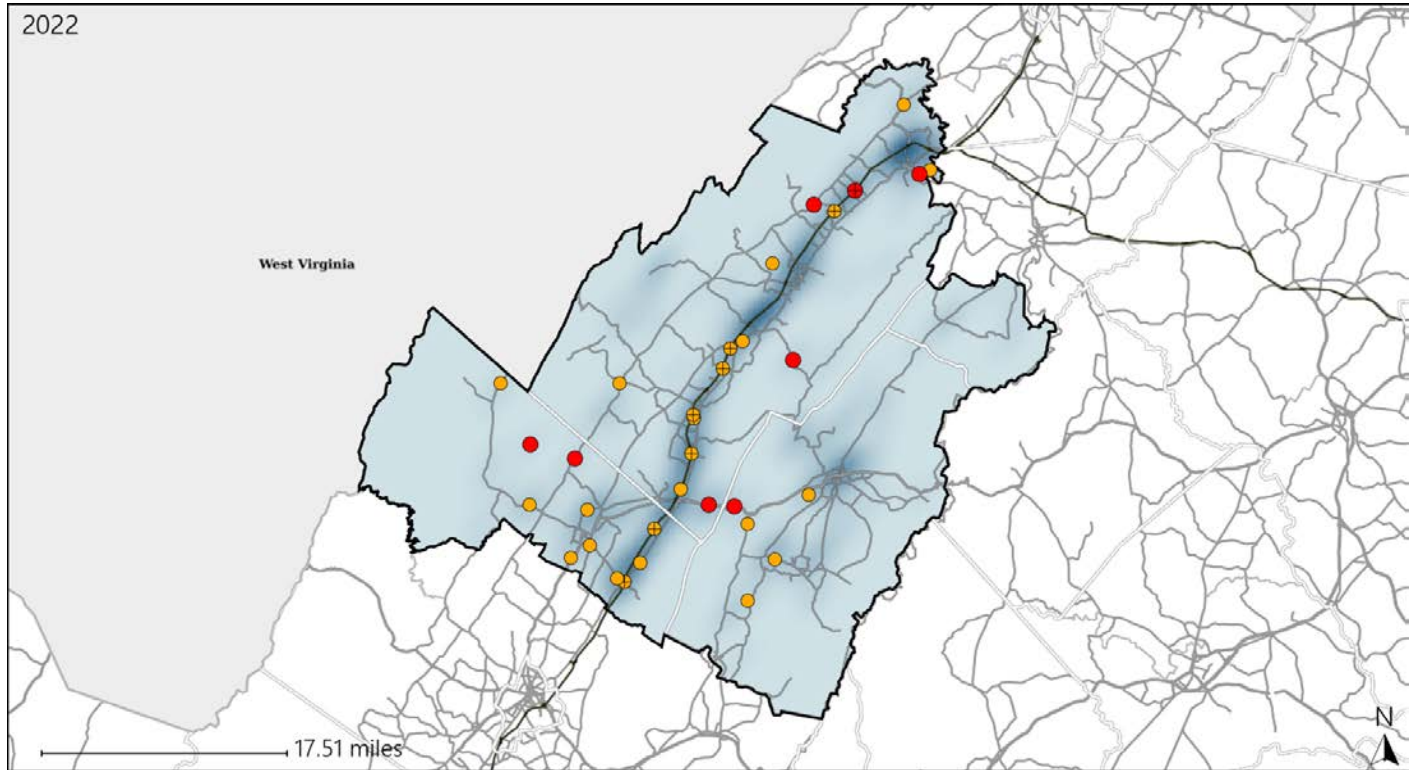


Available Crash Data - Calendar Year (CY)	CY 2019	CY 2020	CY 2021	CY 2022
Total Crashes	1109	1004	1209	1271
Fatal Crashes	10	16	11	22
Injury Crashes	313	257	325	337
Alcohol-Related Fatal Crashes	1	6	5	7
Percent of Alcohol-Related Fatal Crashes to Total Fatal Crashes	10%	38%	45%	32%
Alcohol-Related Injury Crashes	27	29	21	25
Percent of Alcohol-Related Injury Crashes to Total Injury Crashes	9%	11%	6%	7%

Virginia House District 33 Speed Crash Statistics

Report Generated May, 2023

	Count	Highest Time Period(s)	Highest Day(s)	Highest Month(s)
Fatal Crashes	8	3:00pm - 5:59pm	Saturday • Wednesday	August • June
Resulting Fatalities	8	6:00pm - 8:59pm (76%)	(50%)	(50%)
Serious Injury Crashes	25	3:00pm - 5:59pm (28%)	Monday (32%)	June (20%)



House District 33 Speed-Related Crashes

Interstate Crashes

Non-interstate Crashes

● Fatal

● Fatal

⊕ Serious Injury

● Serious Injury

The blue gradient represents the density of all speed-related crashes.

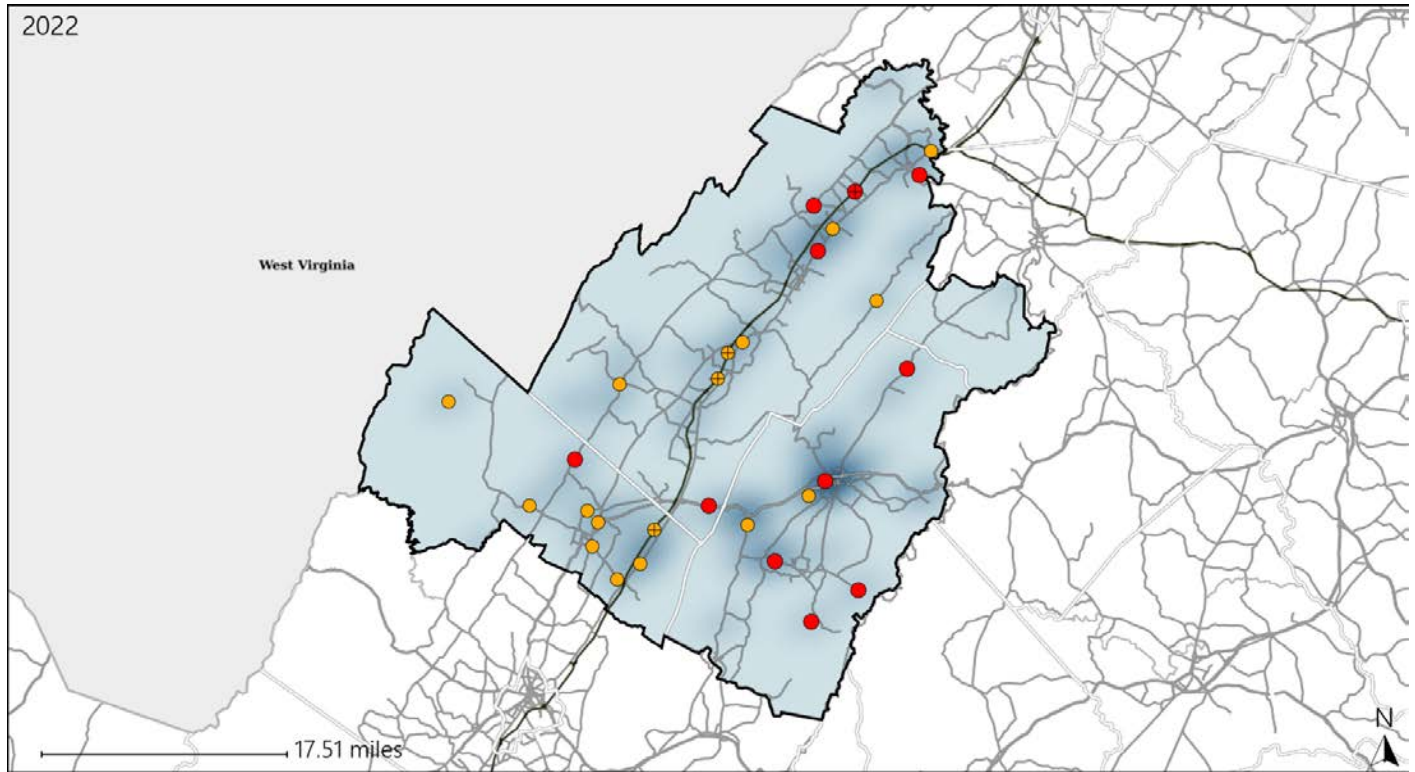


Available Crash Data - Calendar Year (CY)	CY 2019	CY 2020	CY 2021	CY 2022
Total Crashes	1109	1004	1209	1271
Fatal Crashes	10	16	11	22
Injury Crashes	313	257	325	337
Speed-Related Fatal Crashes	4	11	5	8
Percent of Speed-Related Fatal Crashes to Total Fatal Crashes	40%	69%	45%	36%
Speed-Related Injury Crashes	93	98	103	105
Percent of Speed-Related Injury Crashes to Total Injury Crashes	30%	38%	32%	31%

Virginia House District 33 Unrestrained Crash Statistics

Report Generated May, 2023

	Count	Highest Time Period(s)	Highest Day(s)	Highest Month(s)
Fatal Crashes	11	3:00pm - 5:59pm	Saturday • Wednesday	August • January
Unrestrained Fatalities	12	(45%)	(72%)	(36%)
Serious Injury Crashes	18	3:00pm - 5:59pm	Friday • Monday	February
		(33%)	(44%)	(22%)



House District 33 Unrestrained-Related Crashes

Interstate Crashes

Non-interstate Crashes

- Fatal
- Serious Injury

- Fatal
- Serious Injury

The blue gradient represents the density of all unrestrained-related crashes.

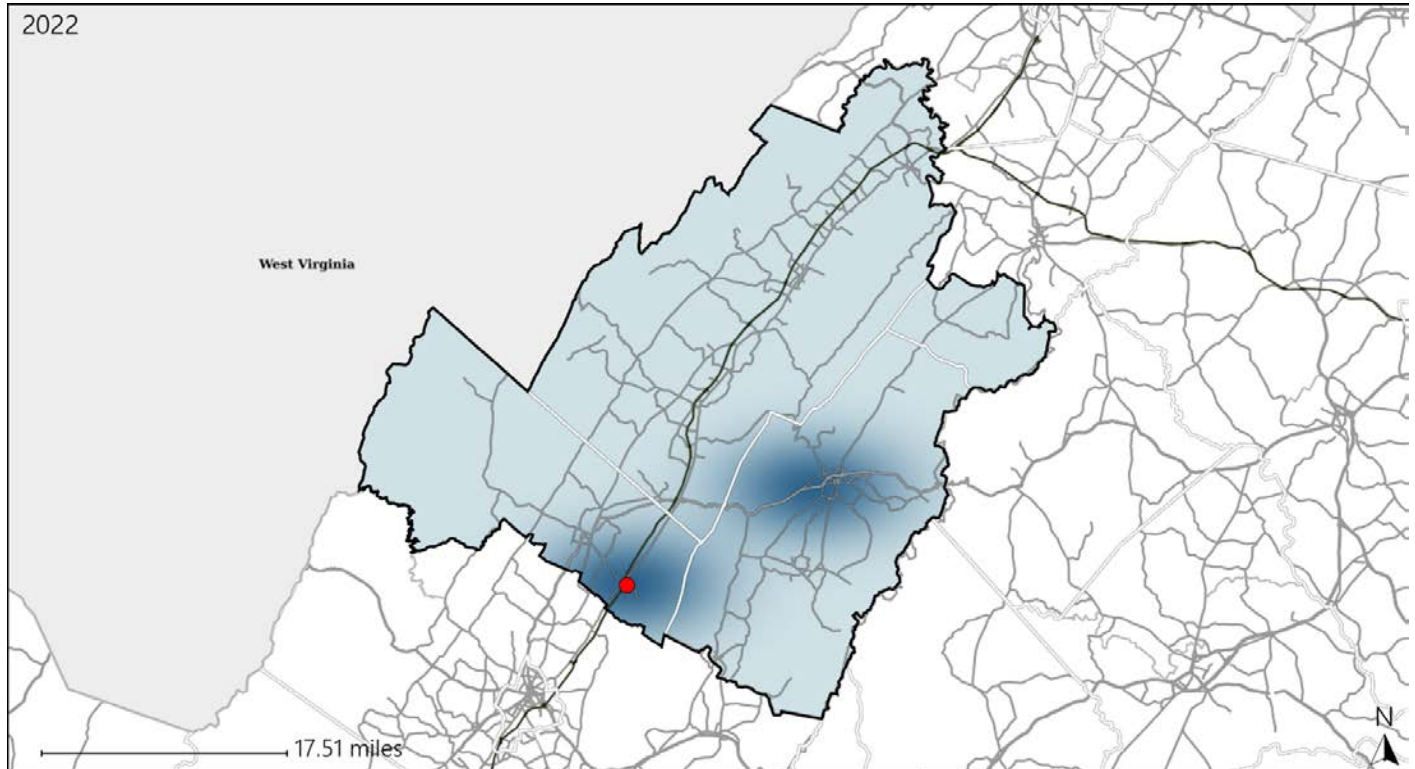


Available Crash Data - Calendar Year (CY)	CY 2019	CY 2020	CY 2021	CY 2022
Total Crashes	1109	1004	1209	1271
Fatalities	13	18	11	23
Injuries	450	375	436	487
Unrestrained Fatalities	3	10	4	12
Percent of Unrestrained Fatalities to Total Fatalities	23%	56%	36%	52%
Unrestrained Injuries	45	60	63	71
Percent of Unrestrained Injuries to Total Injuries	10%	16%	14%	15%

Virginia House District 33 Pedestrian Crash Statistics

Report Generated May, 2023

	Count	Highest Time Period(s)	Highest Day(s)	Highest Month(s)
Fatal Crashes	1	6:00pm - 8:59pm	Friday	January
Pedestrian Fatalities	1	(100%)	(100%)	(100%)
Serious Injury Crashes	0	-	-	-



House District 33 Pedestrian-Related Crashes

Interstate Crashes

Non-interstate Crashes

● Fatal

● Fatal

⊕ Serious Injury

● Serious Injury

The blue gradient represents the density of all pedestrian-related crashes.

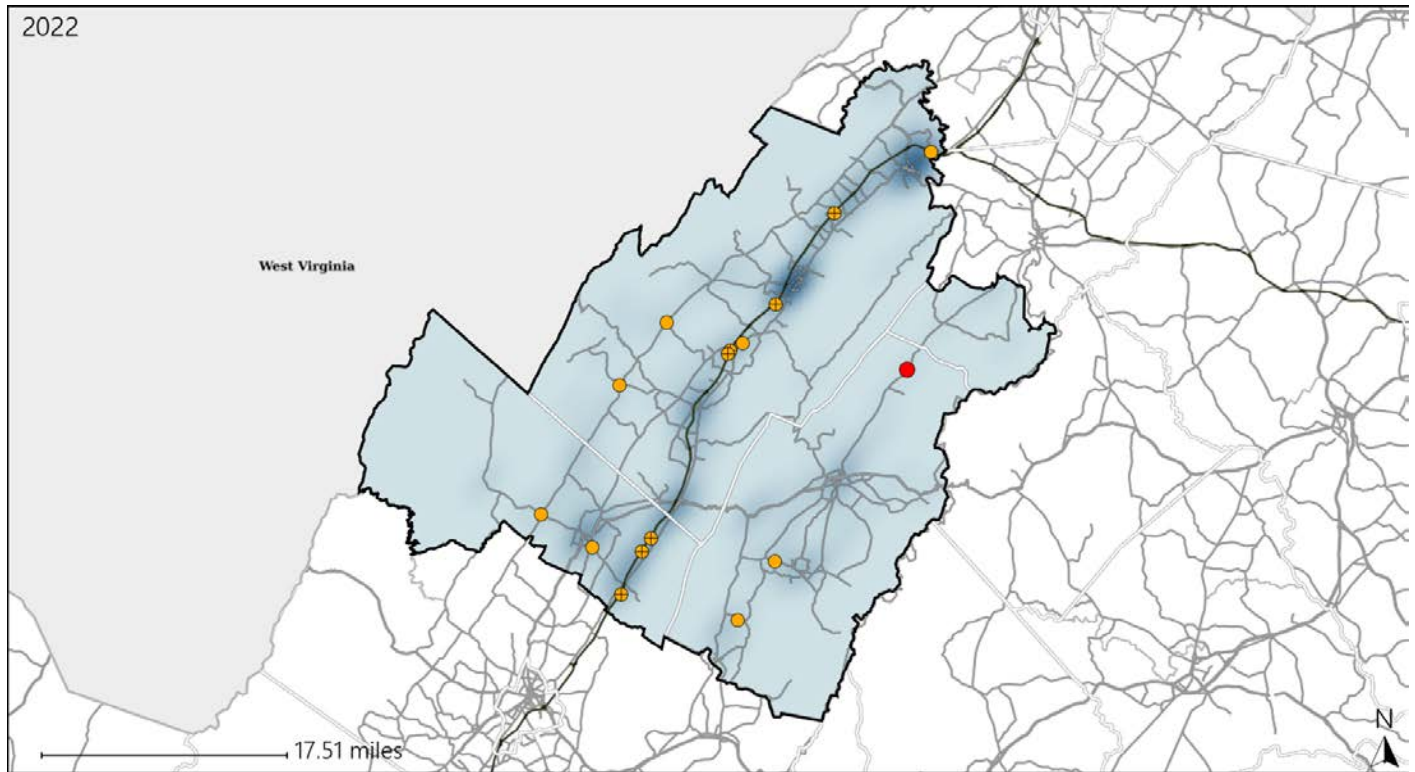


Available Crash Data - Calendar Year (CY)	CY 2019	CY 2020	CY 2021	CY 2022
Total Crashes	1109	1004	1209	1271
Fatal Crashes	10	16	11	22
Injury Crashes	313	257	325	337
Pedestrian-Related Fatal Crashes	1	0	0	1
Percent of Pedestrian-Related Fatal Crashes to Total Fatal Crashes	10%	0%	0%	5%
Pedestrian-Related Injury Crashes	6	6	5	1
Percent of Pedestrian-Related Injury Crashes to Total Injury Crashes	2%	2%	2%	0%

Virginia House District 33 Distracted Driving Crash Statistics

Report Generated May, 2023

	Count	Highest Time Period(s)	Highest Day(s)	Highest Month(s)
Fatal Crashes	1	3:00pm - 5:59pm	Wednesday	September
Resulting Fatalities	2	(100%)	(100%)	(100%)
Serious Injury Crashes	15	3:00pm - 5:59pm 9:00pm - 11:59pm	Thursday	June • October
		(40%)	(27%)	(40%)



House District 33 Distracted Driving-Related Crashes

- | | |
|--------------------|------------------------|
| Interstate Crashes | Non-interstate Crashes |
| ● Fatal | ● Fatal |
| ⊕ Serious Injury | ● Serious Injury |

The blue gradient represents the density of all distracted driving-related crashes.



Available Crash Data - Calendar Year (CY)	CY 2019	CY 2020	CY 2021	CY 2022
Total Crashes	1109	1004	1209	1271
Fatal Crashes	10	16	11	22
Injury Crashes	313	257	325	337
Distracted Driving-Related Fatal Crashes	2	4	1	1
Percent of Distracted Driving-Related Fatal Crashes to Total Fatal Crashes	20%	25%	9%	5%
Distracted Driving-Related Injury Crashes	74	57	71	74
Percent of Distracted Driving-Related Injury Crashes to Total Injury Crashes	24%	22%	22%	22%