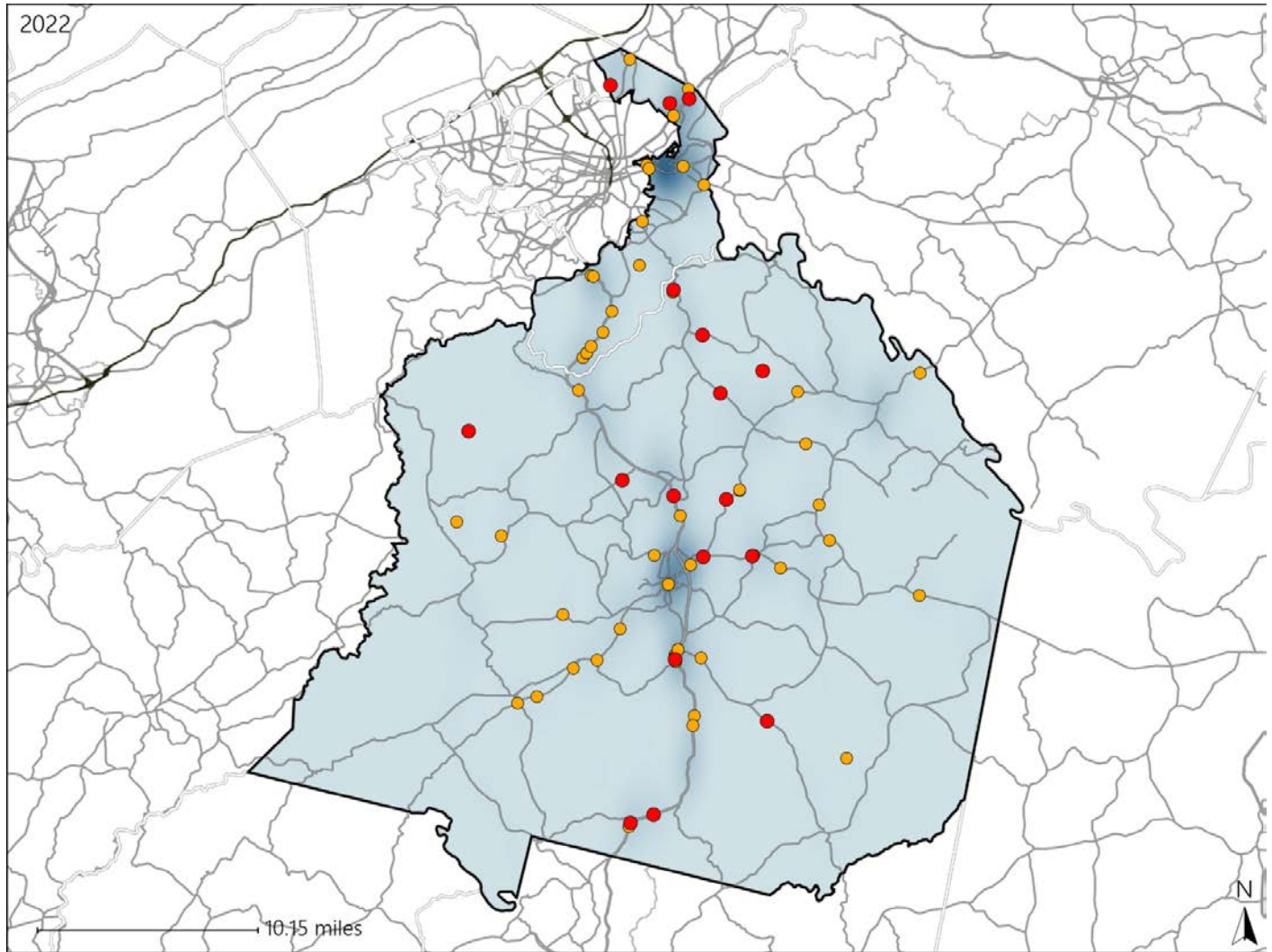


Virginia House District 39 Crash Statistics

Report Generated May, 2023

	Count	Highest Time Period(s)	Highest Day(s)	Highest Month(s)
Fatal Crashes	17	6:00pm - 8:59pm	Thursday	July - October
Resulting Fatalities	19	(29%)	(24%)	(58%)
Serious Injury Crashes	52	3:00pm - 5:59pm	Saturday	November
		(19%)	(27%)	(23%)



House District 39 Crashes

Interstate Crashes

- Fatal
- Serious Injury

Non-interstate Crashes

- Fatal
- Serious Injury

The blue gradient represents the density of all crashes.

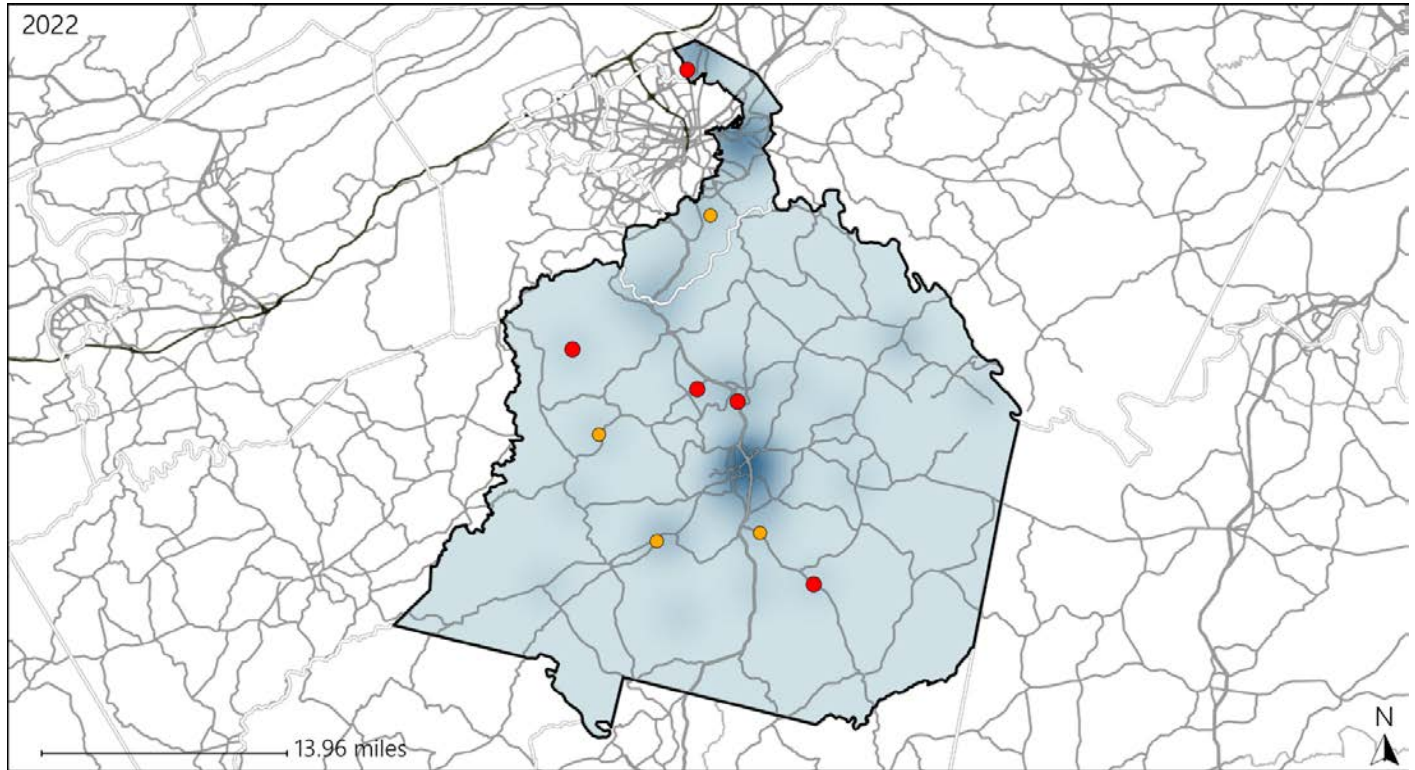


Available Crash Data - Calendar Year (CY)	CY 2019	CY 2020	CY 2021	CY 2022
Total Crashes	1311	1237	1266	1223
Fatal Crashes	15	8	12	17
Injury Crashes	493	420	393	400

Virginia House District 39 Alcohol Crash Statistics

Report Generated May, 2023

	Count	Highest Time Period(s)	Highest Day(s)	Highest Month(s)
Fatal Crashes	5	6:00pm - 8:59pm	Friday • Sunday	July
Resulting Fatalities	5	Midnight - 2:59am (80%)	(80%)	(40%)
Serious Injury Crashes	4	9:00pm - 11:59pm (50%)	Saturday (50%)	March • May (50%)



House District 39 Alcohol-Related Crashes

Interstate Crashes

Non-interstate Crashes

● Fatal

● Fatal

● Serious Injury

● Serious Injury

The blue gradient represents the density of all alcohol-related crashes.

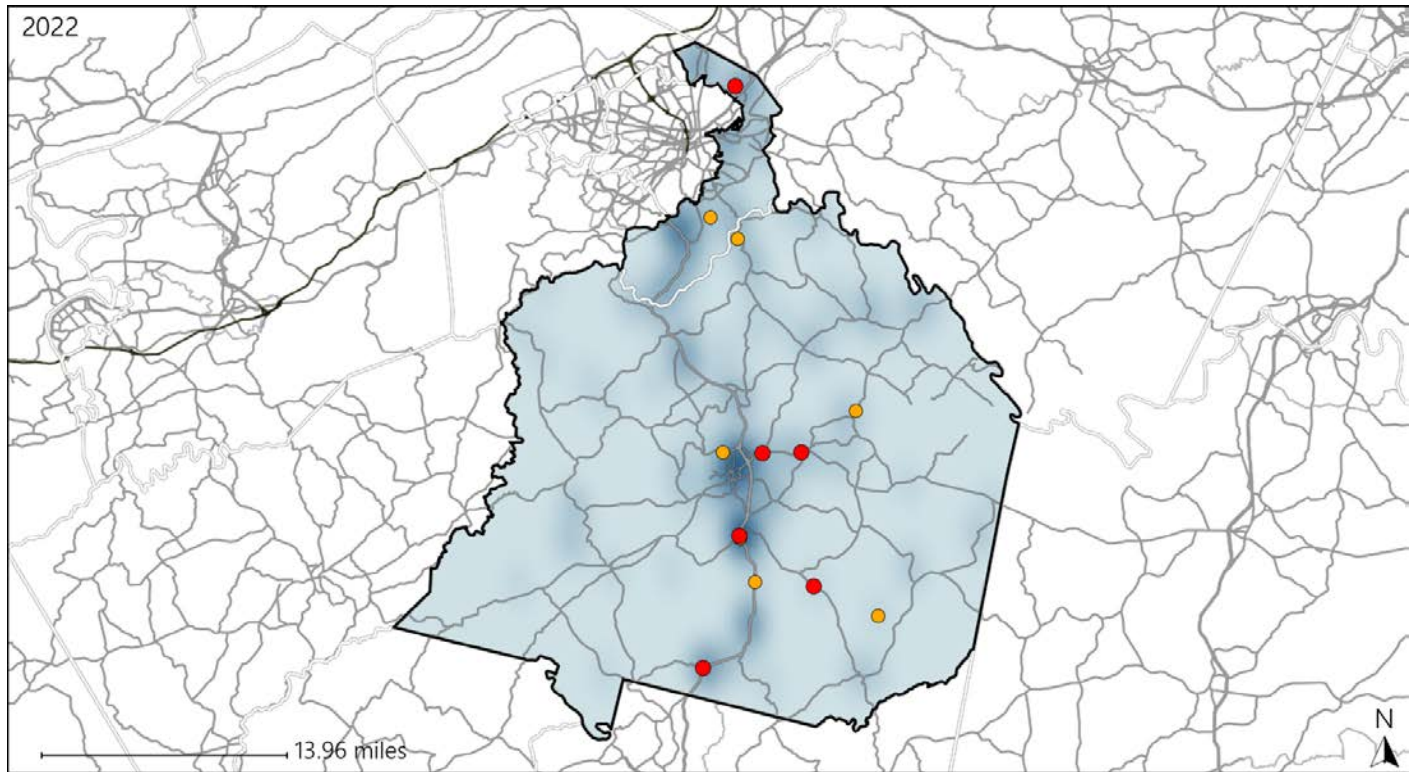


Available Crash Data - Calendar Year (CY)	CY 2019	CY 2020	CY 2021	CY 2022
Total Crashes	1311	1237	1266	1223
Fatal Crashes	15	8	12	17
Injury Crashes	493	420	393	400
Alcohol-Related Fatal Crashes	6	1	3	5
Percent of Alcohol-Related Fatal Crashes to Total Fatal Crashes	40%	13%	25%	29%
Alcohol-Related Injury Crashes	38	42	40	26
Percent of Alcohol-Related Injury Crashes to Total Injury Crashes	8%	10%	10%	7%

Virginia House District 39 Speed Crash Statistics

Report Generated May, 2023

	Count	Highest Time Period(s)	Highest Day(s)	Highest Month(s)
Fatal Crashes	6	6:00pm - 8:59pm	Monday	October
Resulting Fatalities	7	(67%)	(33%)	(67%)
Serious Injury Crashes	7	9:00am - 11:59am 9:00pm - 11:59pm	Friday	November
		(58%)	(43%)	(29%)



House District 39 Speed-Related Crashes

Interstate Crashes Non-interstate Crashes
 ● Fatal ● Fatal
 ⊕ Serious Injury ⊕ Serious Injury

The blue gradient represents the density of all speed-related crashes.

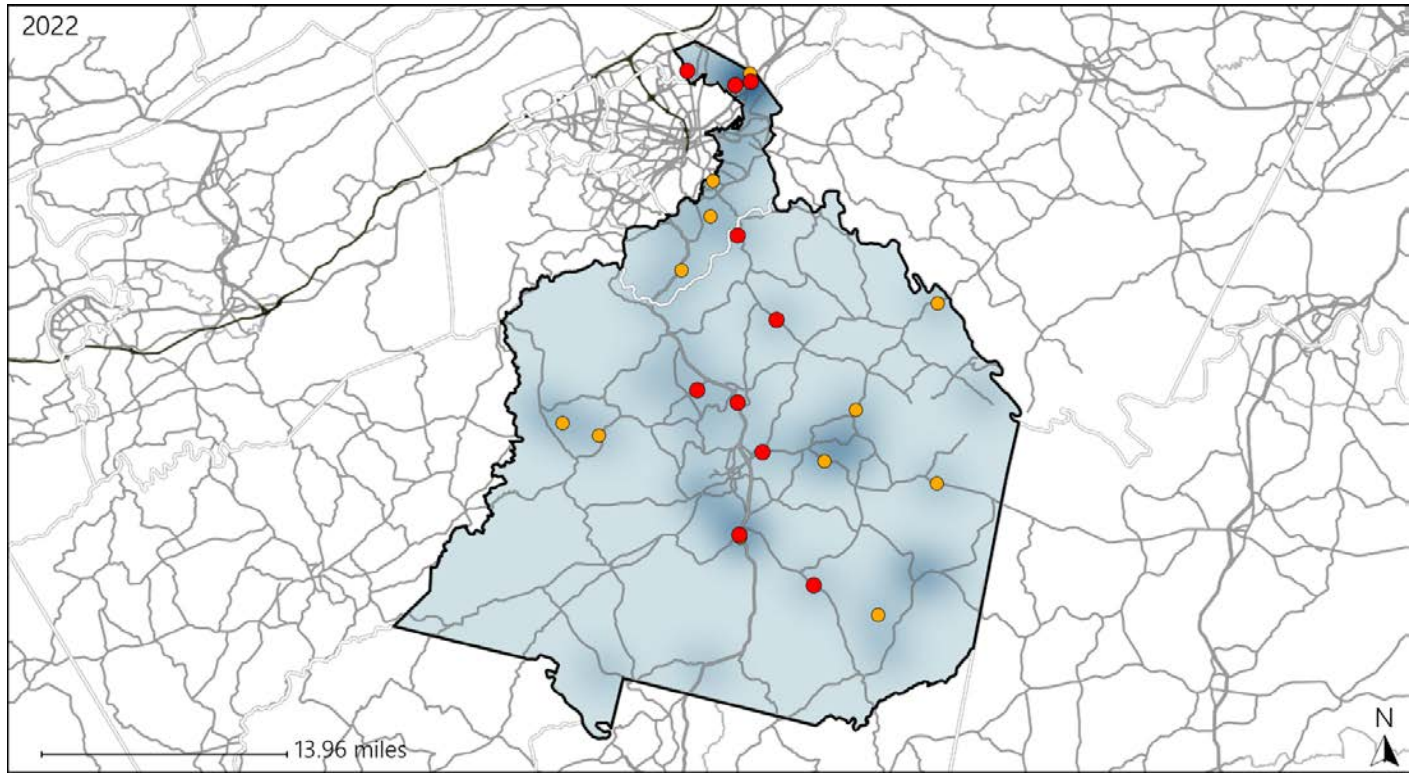


Available Crash Data - Calendar Year (CY)	CY 2019	CY 2020	CY 2021	CY 2022
Total Crashes	1311	1237	1266	1223
Fatal Crashes	15	8	12	17
Injury Crashes	493	420	393	400
Speed-Related Fatal Crashes	7	2	8	6
Percent of Speed-Related Fatal Crashes to Total Fatal Crashes	47%	25%	67%	35%
Speed-Related Injury Crashes	103	86	71	81
Percent of Speed-Related Injury Crashes to Total Injury Crashes	21%	20%	18%	20%

Virginia House District 39 Unrestrained Crash Statistics

Report Generated May, 2023

	Count	Highest Time Period(s)	Highest Day(s)	Highest Month(s)
Fatal Crashes	10	6:00am - 8:59am	Friday (30%)	July (40%)
Unrestrained Fatalities	10	6:00pm - 8:59pm (60%)		
Serious Injury Crashes	12	6:00pm - 8:59pm 9:00am - 11:59am (50%)	Saturday (33%)	May • November (34%)



House District 39 Unrestrained-Related Crashes

- | | |
|--------------------|------------------------|
| Interstate Crashes | Non-interstate Crashes |
| ● Fatal | ● Fatal |
| ⊕ Serious Injury | ⊕ Serious Injury |

The blue gradient represents the density of all unrestrained-related crashes.

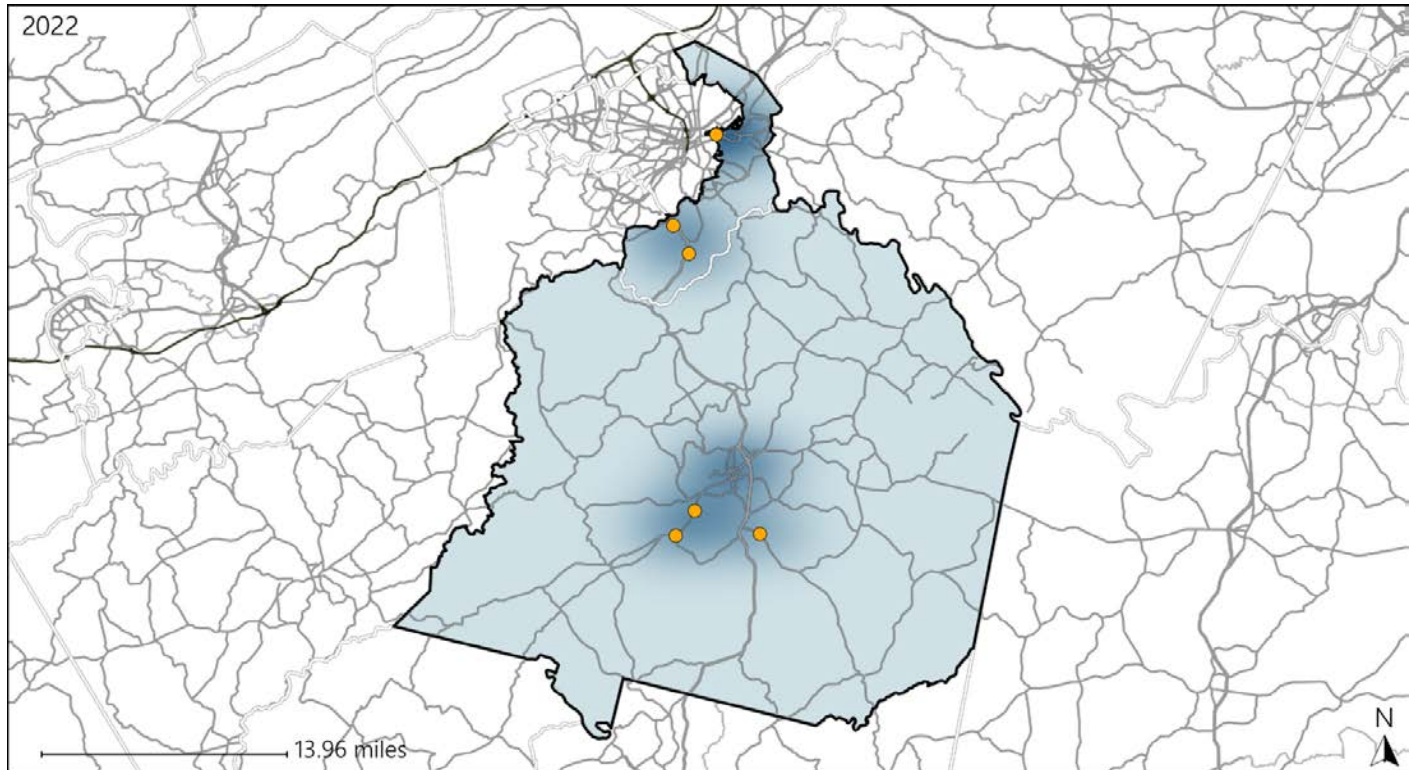


Available Crash Data - Calendar Year (CY)	CY 2019	CY 2020	CY 2021	CY 2022
Total Crashes	1311	1237	1266	1223
Fatalities	16	9	12	19
Injuries	676	552	543	580
Unrestrained Fatalities	5	5	7	10
Percent of Unrestrained Fatalities to Total Fatalities	31%	56%	58%	53%
Unrestrained Injuries	47	43	53	46
Percent of Unrestrained Injuries to Total Injuries	7%	8%	10%	8%

Virginia House District 39 Pedestrian Crash Statistics

Report Generated May, 2023

	Count	Highest Time Period(s)	Highest Day(s)	Highest Month(s)
Fatal Crashes	0	-	-	-
Pedestrian Fatalities	0	-	-	-
Serious Injury Crashes	6	3:00pm - 5:59pm (50%)	Saturday (50%)	November (33%)



House District 39 Pedestrian-Related Crashes

- | | |
|--------------------|------------------------|
| Interstate Crashes | Non-interstate Crashes |
| Fatal | Fatal |
| Serious Injury | Serious Injury |

The blue gradient represents the density of all pedestrian-related crashes.

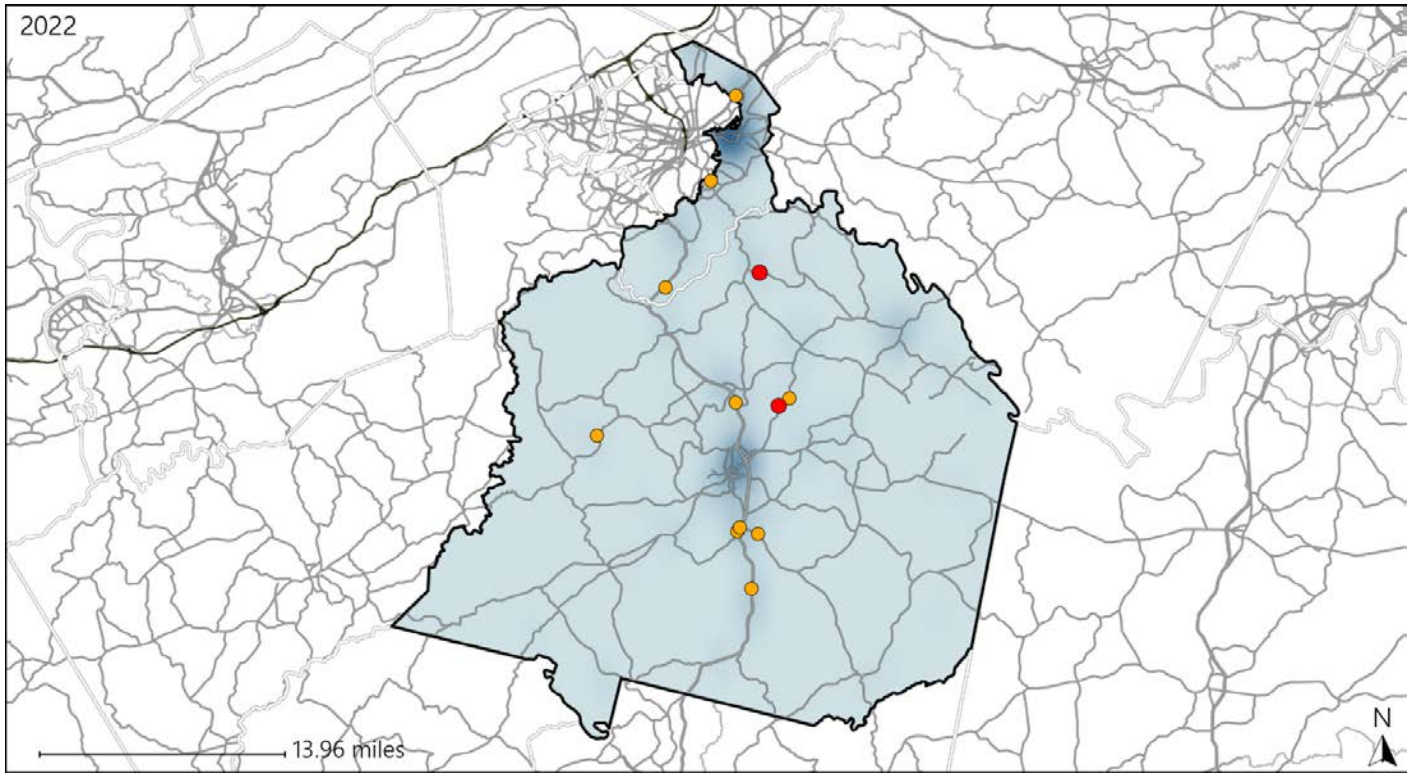


Available Crash Data - Calendar Year (CY)	CY 2019	CY 2020	CY 2021	CY 2022
Total Crashes	1311	1237	1266	1223
Fatal Crashes	15	8	12	17
Injury Crashes	493	420	393	400
Pedestrian-Related Fatal Crashes	1	0	0	0
Percent of Pedestrian-Related Fatal Crashes to Total Fatal Crashes	7%	0%	0%	0%
Pedestrian-Related Injury Crashes	5	6	3	10
Percent of Pedestrian-Related Injury Crashes to Total Injury Crashes	1%	1%	1%	3%

Virginia House District 39 Distracted Driving Crash Statistics

Report Generated May, 2023

	Count	Highest Time Period(s)	Highest Day(s)	Highest Month(s)
Fatal Crashes	2	3:00pm - 5:59pm	Tuesday • Wednesday	July • October
Resulting Fatalities	2	6:00am - 8:59am (100%)	(100%)	(100%)
Serious Injury Crashes	10	3:00pm - 5:59pm	Saturday	March • November
		6:00pm - 8:59pm (40%)	(30%)	(60%)



House District 39 Distracted Driving-Related Crashes

- | | |
|--------------------|------------------------|
| Interstate Crashes | Non-interstate Crashes |
| ● Fatal | ● Fatal |
| ⊕ Serious Injury | ⊕ Serious Injury |

The blue gradient represents the density of all distracted driving-related crashes.



Available Crash Data - Calendar Year (CY)	CY 2019	CY 2020	CY 2021	CY 2022
Total Crashes	1311	1237	1266	1223
Fatal Crashes	15	8	12	17
Injury Crashes	493	420	393	400
Distracted Driving-Related Fatal Crashes	2	1	0	2
Percent of Distracted Driving-Related Fatal Crashes to Total Fatal Crashes	13%	13%	0%	12%
Distracted Driving-Related Injury Crashes	104	81	68	81
Percent of Distracted Driving-Related Injury Crashes to Total Injury Crashes	21%	19%	17%	20%