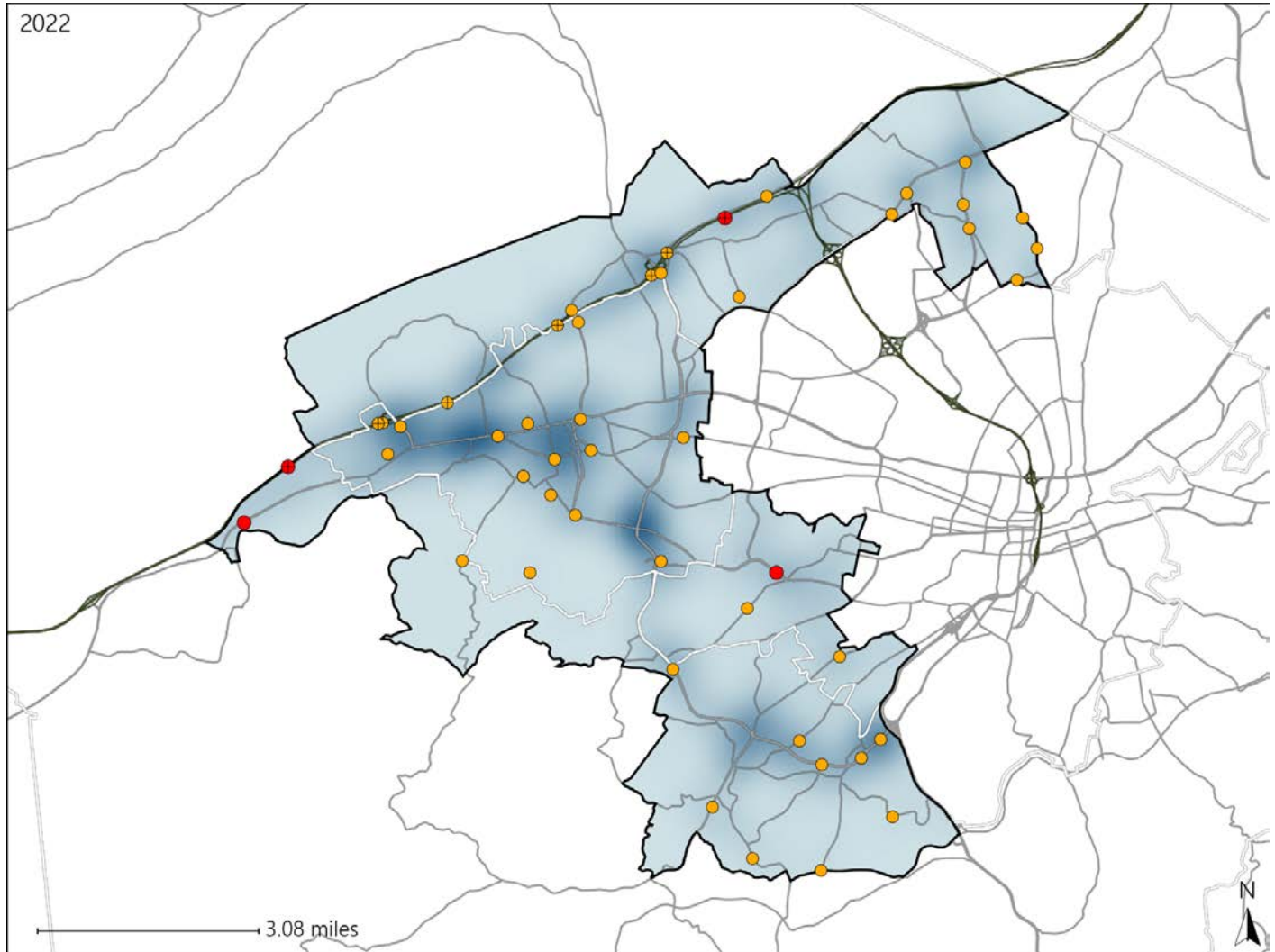


Virginia House District 40 Crash Statistics

Report Generated May, 2023

	Count	Highest Time Period(s)	Highest Day(s)	Highest Month(s)
Fatal Crashes	4	3:00pm - 5:59pm	Friday • Monday	June
Resulting Fatalities	4	6:00pm - 8:59pm (50%)	(50%)	(50%)
Serious Injury Crashes	45	3:00pm - 5:59pm (24%)	Tuesday (24%)	October (18%)



House District 40 Crashes

Interstate Crashes

- Fatal
- Serious Injury

Non-interstate Crashes

- Fatal
- Serious Injury

The blue gradient represents the density of all crashes.

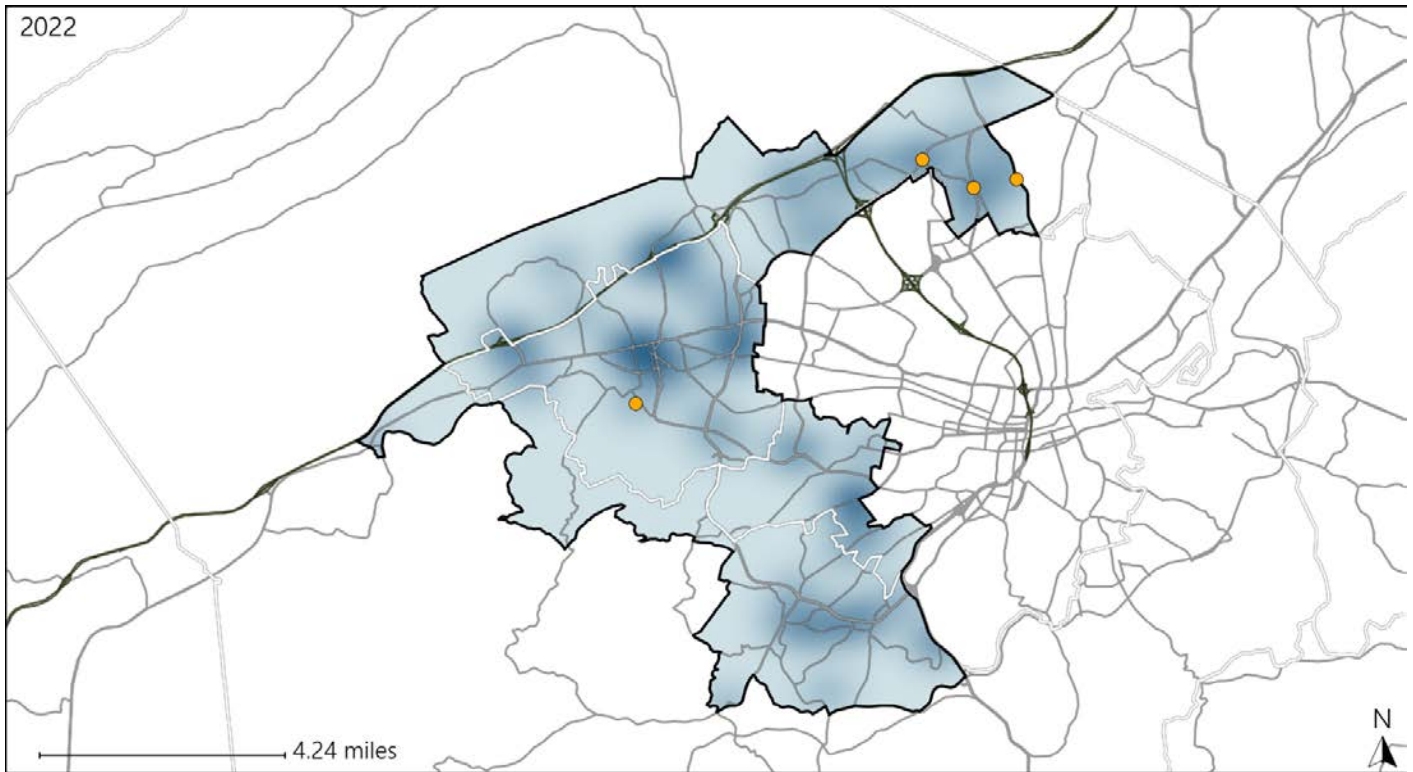


Available Crash Data - Calendar Year (CY)	CY 2019	CY 2020	CY 2021	CY 2022
Total Crashes	1212	1155	1237	1394
Fatal Crashes	10	5	4	4
Injury Crashes	310	336	357	369

Virginia House District 40 Alcohol Crash Statistics

Report Generated May, 2023

	Count	Highest Time Period(s)	Highest Day(s)	Highest Month(s)
Fatal Crashes	0	-	-	-
Resulting Fatalities	0	-	-	-
Serious Injury Crashes	4	6:00pm - 8:59pm Midnight - 2:59am (100%)	Sunday (50%)	December - March (50%)



House District 40 Alcohol-Related Crashes

Interstate Crashes Non-interstate Crashes
 ● Fatal ● Fatal
 ⊕ Serious Injury ⊕ Serious Injury

The blue gradient represents the density of all alcohol-related crashes.

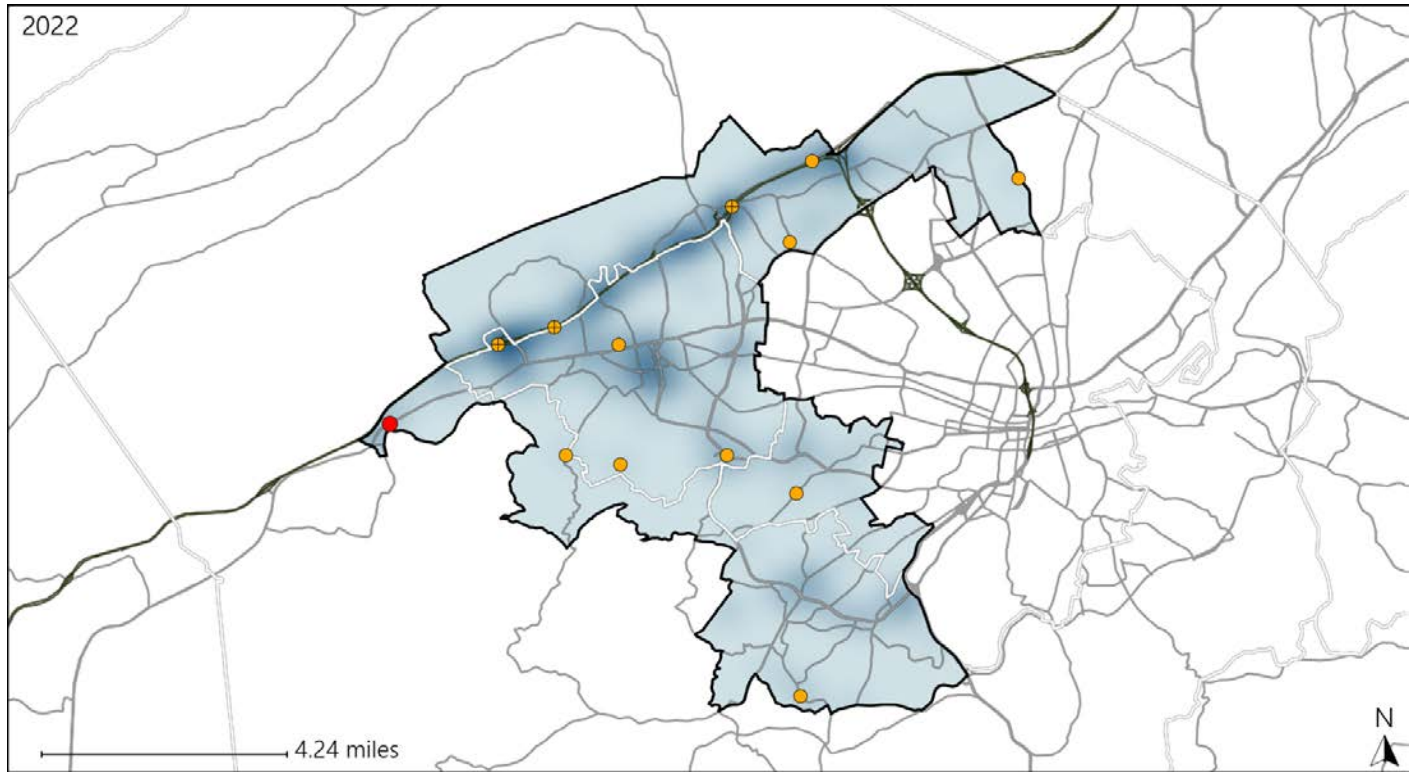


Available Crash Data - Calendar Year (CY)	CY 2019	CY 2020	CY 2021	CY 2022
Total Crashes	1212	1155	1237	1394
Fatal Crashes	10	5	4	4
Injury Crashes	310	336	357	369
Alcohol-Related Fatal Crashes	1	1	0	0
Percent of Alcohol-Related Fatal Crashes to Total Fatal Crashes	10%	20%	0%	0%
Alcohol-Related Injury Crashes	14	11	26	21
Percent of Alcohol-Related Injury Crashes to Total Injury Crashes	5%	3%	7%	6%





Virginia House District 40 Speed Crash Statistics

Report Generated May, 2023

	Count	Highest Time Period(s)	Highest Day(s)	Highest Month(s)
Fatal Crashes	1	3:00pm - 5:59pm	Monday	February
Resulting Fatalities	1	(100%)	(100%)	(100%)
Serious Injury Crashes	12	Midnight - 2:59am	Wednesday	August • November
		(33%)	(25%)	(50%)



House District 40 Speed-Related Crashes

Interstate Crashes Non-interstate Crashes
 Fatal  Fatal
 Serious Injury  Serious Injury

The blue gradient represents the density of all speed-related crashes.

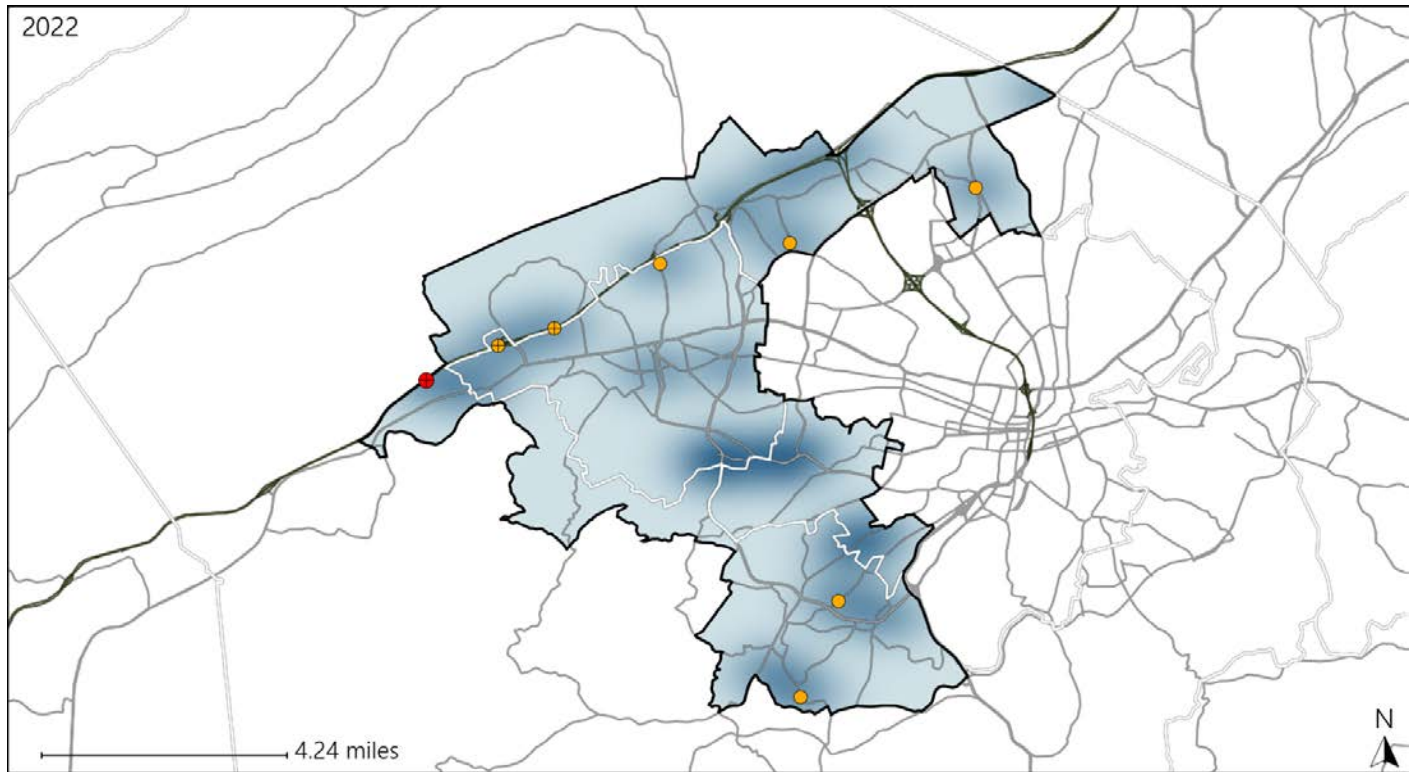


Available Crash Data - Calendar Year (CY)	CY 2019	CY 2020	CY 2021	CY 2022
Total Crashes	1212	1155	1237	1394
Fatal Crashes	10	5	4	4
Injury Crashes	310	336	357	369
Speed-Related Fatal Crashes	3	4	0	1
Percent of Speed-Related Fatal Crashes to Total Fatal Crashes	30%	80%	0%	25%
Speed-Related Injury Crashes	62	55	62	72
Percent of Speed-Related Injury Crashes to Total Injury Crashes	20%	16%	17%	20%

Virginia House District 40 Unrestrained Crash Statistics

Report Generated May, 2023

	Count	Highest Time Period(s)	Highest Day(s)	Highest Month(s)
Fatal Crashes	1	9:00am - 11:59am	Sunday	August
Unrestrained Fatalities	1	(100%)	(100%)	(100%)
Serious Injury Crashes	7	3:00pm - 5:59pm Midnight - 2:59am	Saturday * Thursday	August
		(58%)	(58%)	(29%)



House District 40 Unrestrained-Related Crashes

- | | |
|--------------------|------------------------|
| Interstate Crashes | Non-interstate Crashes |
| Fatal | Fatal |
| Serious Injury | Serious Injury |

The blue gradient represents the density of all unrestrained-related crashes.

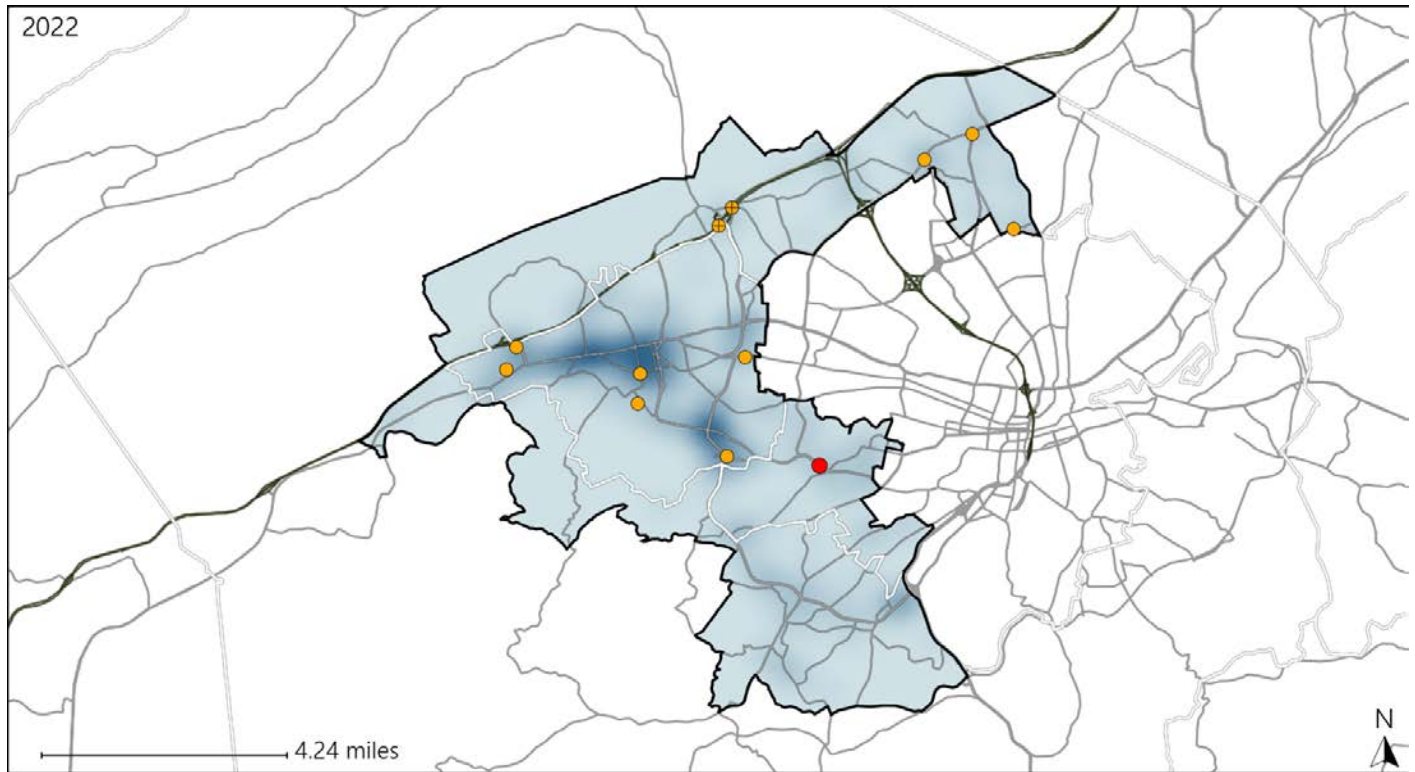


Available Crash Data - Calendar Year (CY)	CY 2019	CY 2020	CY 2021	CY 2022
Total Crashes	1212	1155	1237	1394
Fatalities	11	5	4	4
Injuries	417	451	471	503
Unrestrained Fatalities	3	0	1	1
Percent of Unrestrained Fatalities to Total Fatalities	27%	0%	25%	25%
Unrestrained Injuries	11	23	17	27
Percent of Unrestrained Injuries to Total Injuries	3%	5%	4%	5%

Virginia House District 40 Distracted Driving Crash Statistics

Report Generated May, 2023

	Count	Highest Time Period(s)	Highest Day(s)	Highest Month(s)
Fatal Crashes	1	6:00pm - 8:59pm	Friday	June
Resulting Fatalities	1	(100%)	(100%)	(100%)
Serious Injury Crashes	11	Midnight - 2:59am Noon - 2:59pm	Sunday • Thursday	August • December
		(54%)	(54%)	(36%)



House District 40 Distracted Driving-Related Crashes

- | | |
|--|--|
| Interstate Crashes | Non-interstate Crashes |
| ● Fatal | ● Fatal |
| ● Serious Injury | ● Serious Injury |

The blue gradient represents the density of all distracted driving-related crashes.



Available Crash Data - Calendar Year (CY)	CY 2019	CY 2020	CY 2021	CY 2022
Total Crashes	1212	1155	1237	1394
Fatal Crashes	10	5	4	4
Injury Crashes	310	336	357	369
Distracted Driving-Related Fatal Crashes	1	0	2	1
Percent of Distracted Driving-Related Fatal Crashes to Total Fatal Crashes	10%	0%	50%	25%
Distracted Driving-Related Injury Crashes	58	84	87	91
Percent of Distracted Driving-Related Injury Crashes to Total Injury Crashes	19%	25%	24%	25%