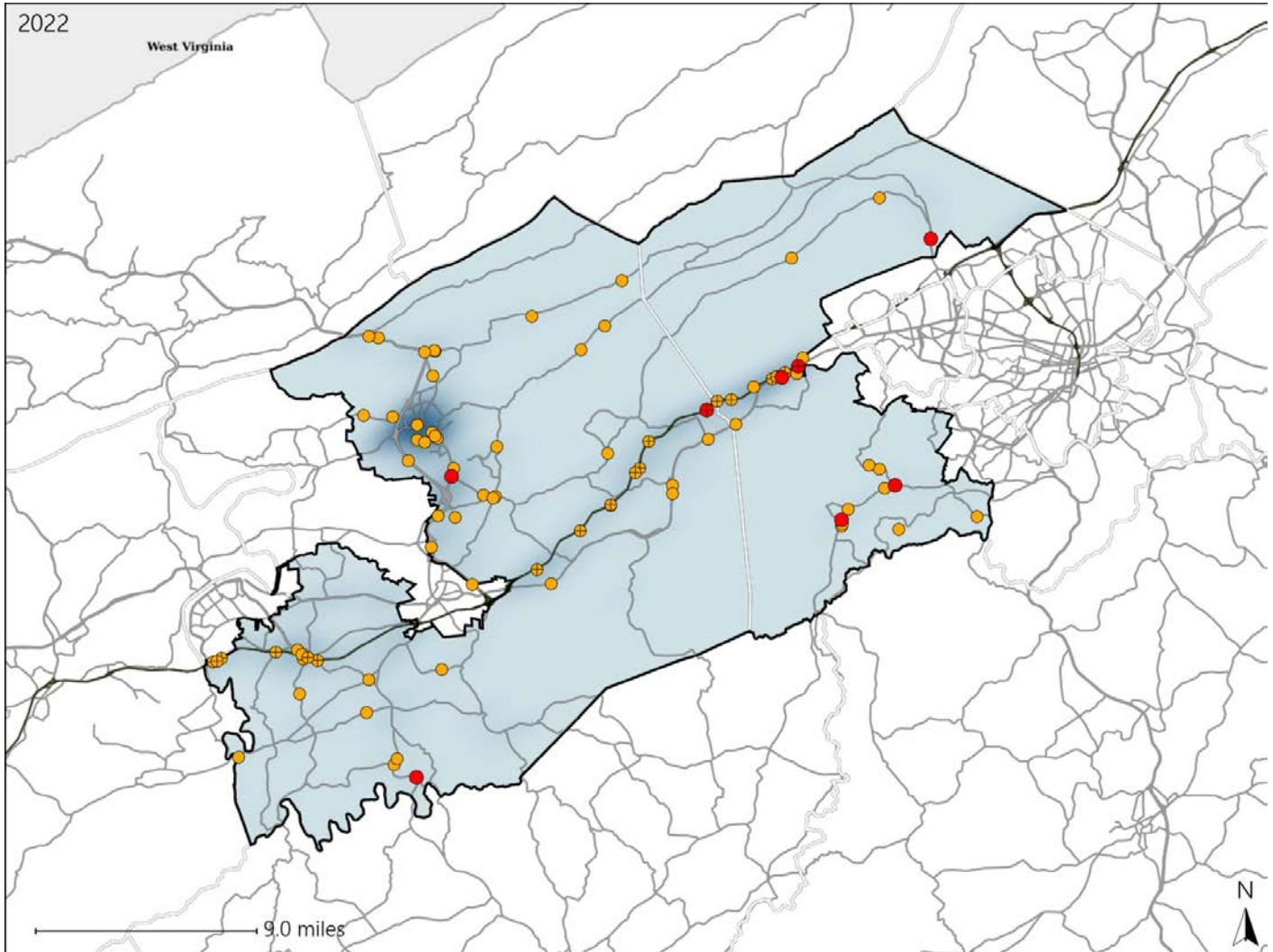


# Virginia House District 41 Crash Statistics

Report Generated May, 2023

	Count	Highest Time Period(s)	Highest Day(s)	Highest Month(s)
<b>Fatal Crashes</b>	<b>8</b>	<b>9:00pm - 11:59pm</b>	<b>Friday</b>	<b>February • November</b>
<b>Resulting Fatalities</b>	<b>8</b>	<b>Midnight - 2:59am</b> (50%)	<b>(38%)</b>	<b>(50%)</b>
<b>Serious Injury Crashes</b>	<b>76</b>	<b>3:00pm - 5:59pm</b> (22%)	<b>Tuesday</b> (20%)	<b>November • October</b> (24%)



### House District 41 Crashes

Interstate Crashes

- Fatal
- Serious Injury

Non-interstate Crashes

- Fatal
- Serious Injury

The blue gradient represents the density of all crashes.

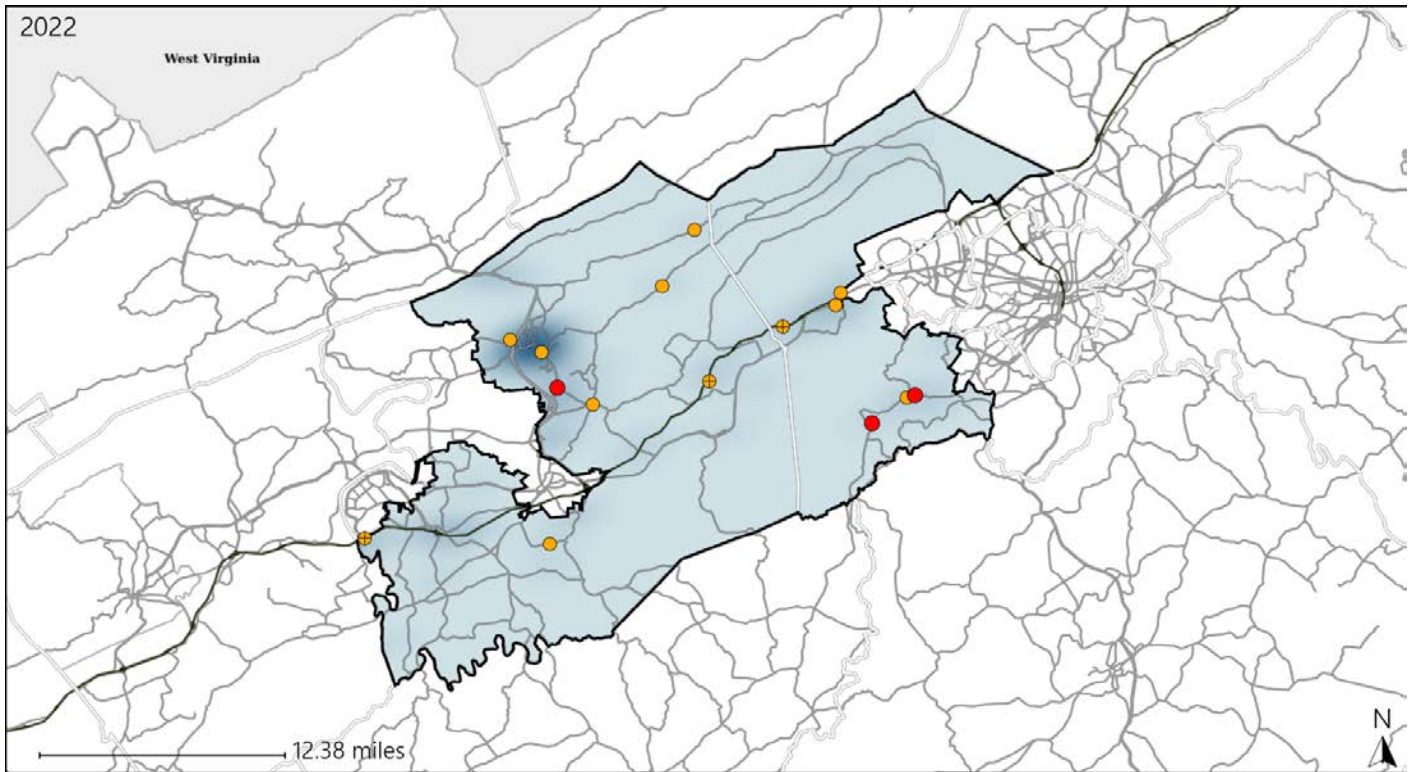


Available Crash Data - Calendar Year (CY)	CY 2019	CY 2020	CY 2021	CY 2022
Total Crashes	1519	1186	1368	1514
Fatal Crashes	9	11	7	8
Injury Crashes	528	429	484	526

# Virginia House District 41 Alcohol Crash Statistics

Report Generated May, 2023

	Count	Highest Time Period(s)	Highest Day(s)	Highest Month(s)
<b>Fatal Crashes</b>	<b>3</b>	<b>Midnight - 2:59am</b>	<b>Friday • Saturday</b>	<b>February • November</b>
<b>Resulting Fatalities</b>	<b>3</b>	(67%)	(66%)	(66%)
<b>Serious Injury Crashes</b>	<b>12</b>	<b>6:00pm - 8:59pm</b> <b>9:00pm - 11:59pm</b>	<b>Friday • Sunday</b>	<b>April • December</b>
		(50%)	(50%)	(34%)



### House District 41 Alcohol-Related Crashes

Interstate Crashes                      Non-interstate Crashes

- Fatal
- Serious Injury
- Fatal
- Serious Injury

The blue gradient represents the density of all alcohol-related crashes.

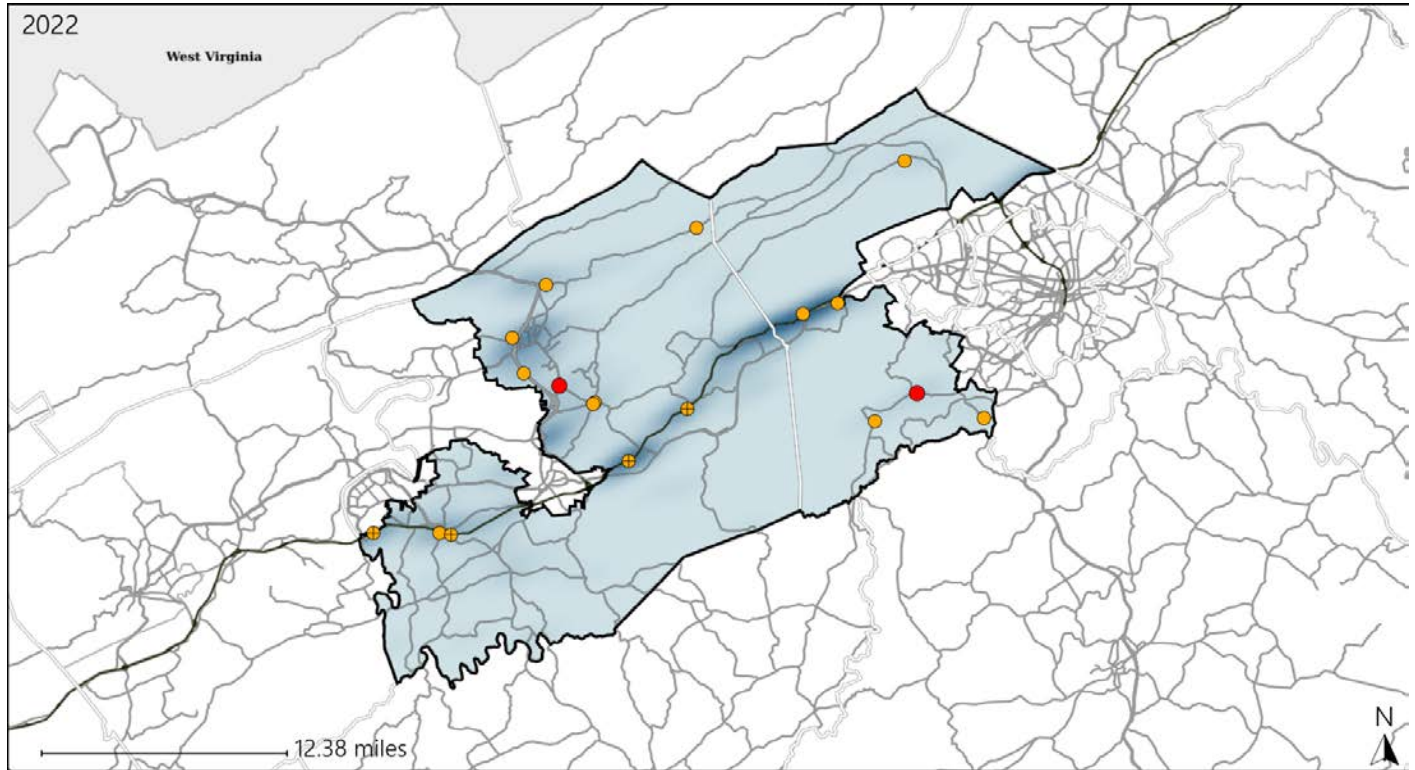


Available Crash Data - Calendar Year (CY)	CY 2019	CY 2020	CY 2021	CY 2022
Total Crashes	1519	1186	1368	1514
Fatal Crashes	9	11	7	8
Injury Crashes	528	429	484	526
Alcohol-Related Fatal Crashes	4	2	0	3
Percent of Alcohol-Related Fatal Crashes to Total Fatal Crashes	44%	18%	0%	38%
Alcohol-Related Injury Crashes	43	43	43	49
Percent of Alcohol-Related Injury Crashes to Total Injury Crashes	8%	10%	9%	9%

# Virginia House District 41 Speed Crash Statistics

Report Generated May, 2023

	Count	Highest Time Period(s)	Highest Day(s)	Highest Month(s)
<b>Fatal Crashes</b>	<b>2</b>	<b>6:00am - 8:59am</b>	<b>Friday • Saturday</b>	<b>February • September</b>
<b>Resulting Fatalities</b>	<b>2</b>	<b>Midnight - 2:59am</b> (100%)	<b>(100%)</b>	<b>(100%)</b>
<b>Serious Injury Crashes</b>	<b>16</b>	<b>6:00pm - 8:59pm</b> (25%)	<b>Sunday • Tuesday</b> (50%)	<b>June</b> (25%)



## House District 41 Speed-Related Crashes

- |  |  |
|--|--|
| Interstate Crashes                                   | Non-interstate Crashes                               |
| <span style="color: red;">●</span> Fatal             | <span style="color: red;">●</span> Fatal             |
| <span style="color: orange;">●</span> Serious Injury | <span style="color: orange;">●</span> Serious Injury |

The blue gradient represents the density of all speed-related crashes.

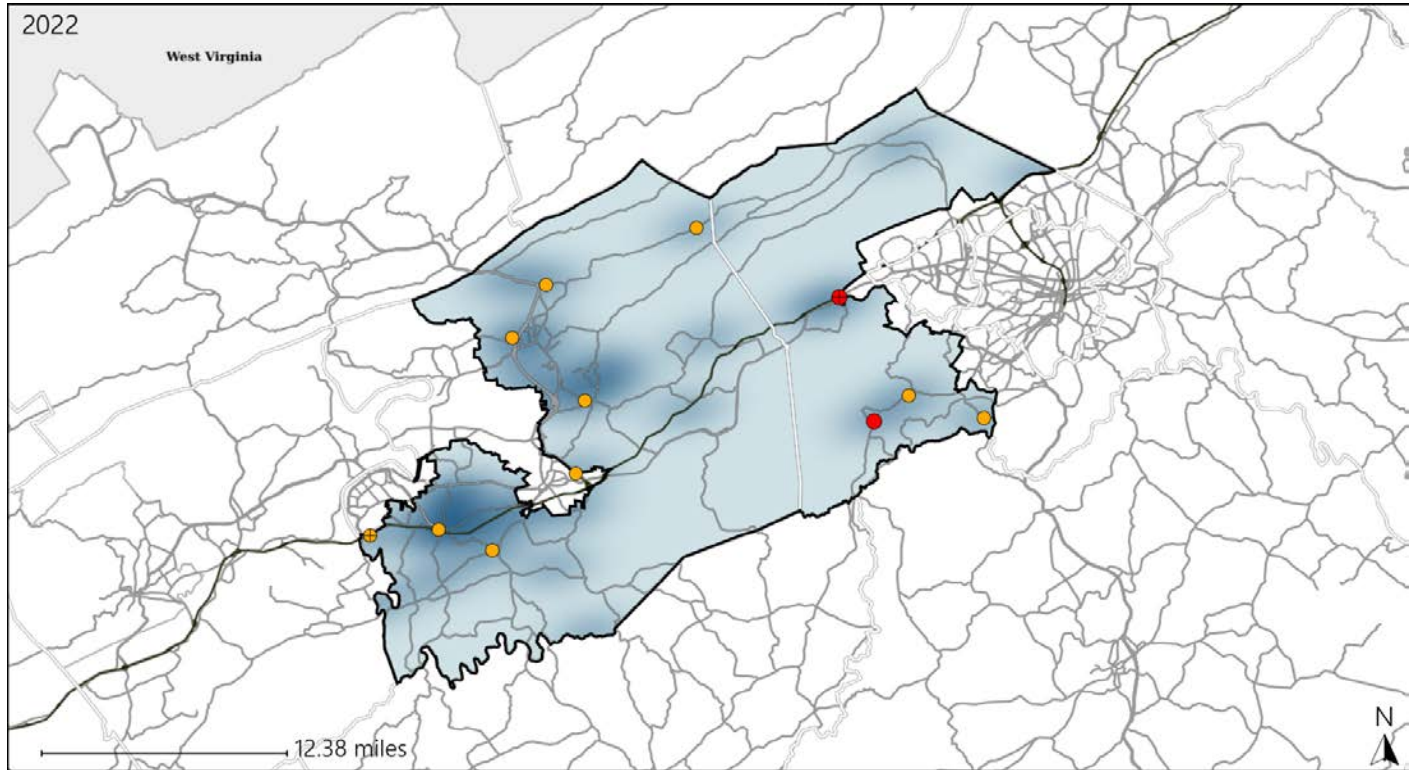


Available Crash Data - Calendar Year (CY)	CY 2019	CY 2020	CY 2021	CY 2022
Total Crashes	1519	1186	1368	1514
Fatal Crashes	9	11	7	8
Injury Crashes	528	429	484	526
Speed-Related Fatal Crashes	1	7	2	2
Percent of Speed-Related Fatal Crashes to Total Fatal Crashes	11%	64%	29%	25%
Speed-Related Injury Crashes	90	84	104	117
Percent of Speed-Related Injury Crashes to Total Injury Crashes	17%	20%	21%	22%

# Virginia House District 41 Unrestrained Crash Statistics

Report Generated May, 2023

	Count	Highest Time Period(s)	Highest Day(s)	Highest Month(s)
<b>Fatal Crashes</b>	<b>2</b>	<b>9:00pm - 11:59pm</b>	<b>Friday • Sunday</b>	<b>November • October</b>
<b>Unrestrained Fatalities</b>	<b>2</b>	<b>Midnight - 2:59am</b> (100%)	<b>(100%)</b>	<b>(100%)</b>
<b>Serious Injury Crashes</b>	<b>10</b>	<b>9:00pm - 11:59pm</b> (30%)	<b>Monday</b> (30%)	<b>August • December</b> (40%)



## House District 41 Unrestrained-Related Crashes

- |  |  |
|--|--|
| Interstate Crashes                                   | Non-interstate Crashes                               |
| <span style="color: red;">●</span> Fatal             | <span style="color: red;">●</span> Fatal             |
| <span style="color: orange;">●</span> Serious Injury | <span style="color: orange;">●</span> Serious Injury |

The blue gradient represents the density of all unrestrained-related crashes.

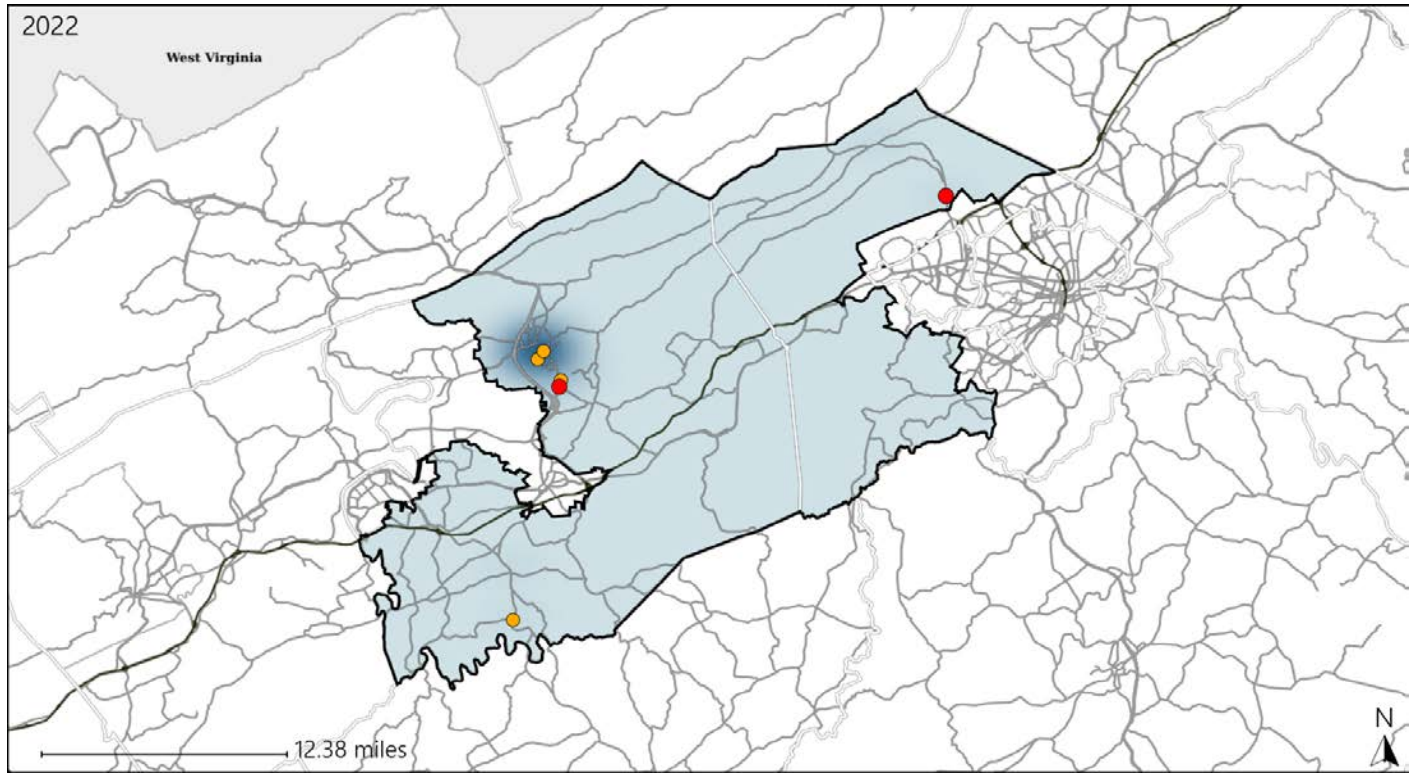


Available Crash Data - Calendar Year (CY)	CY 2019	CY 2020	CY 2021	CY 2022
Total Crashes	1519	1186	1368	1514
Fatalities	9	13	8	8
Injuries	715	581	622	722
Unrestrained Fatalities	5	3	2	2
Percent of Unrestrained Fatalities to Total Fatalities	56%	23%	25%	25%
Unrestrained Injuries	30	40	51	32
Percent of Unrestrained Injuries to Total Injuries	4%	7%	8%	4%

# Virginia House District 41 Pedestrian Crash Statistics

Report Generated May, 2023

	Count	Highest Time Period(s)	Highest Day(s)	Highest Month(s)
<b>Fatal Crashes</b>	<b>2</b>	<b>9:00pm - 11:59pm</b>	<b>Friday • Wednesday</b>	<b>July • September</b>
<b>Pedestrian Fatalities</b>	<b>2</b>	<b>Midnight - 2:59am</b> (100%)	<b>(100%)</b>	<b>(100%)</b>
<b>Serious Injury Crashes</b>	<b>4</b>	<b>3:00pm - 5:59pm</b> <b>6:00am - 8:59am</b> (50%)	<b>Friday • Monday</b> (50%)	<b>October</b> (75%)



### House District 41 Pedestrian-Related Crashes

Interstate Crashes                      Non-interstate Crashes  
 ● Fatal                                      ● Fatal  
 ⊕ Serious Injury                          ⊕ Serious Injury

The blue gradient represents the density of all pedestrian-related crashes.

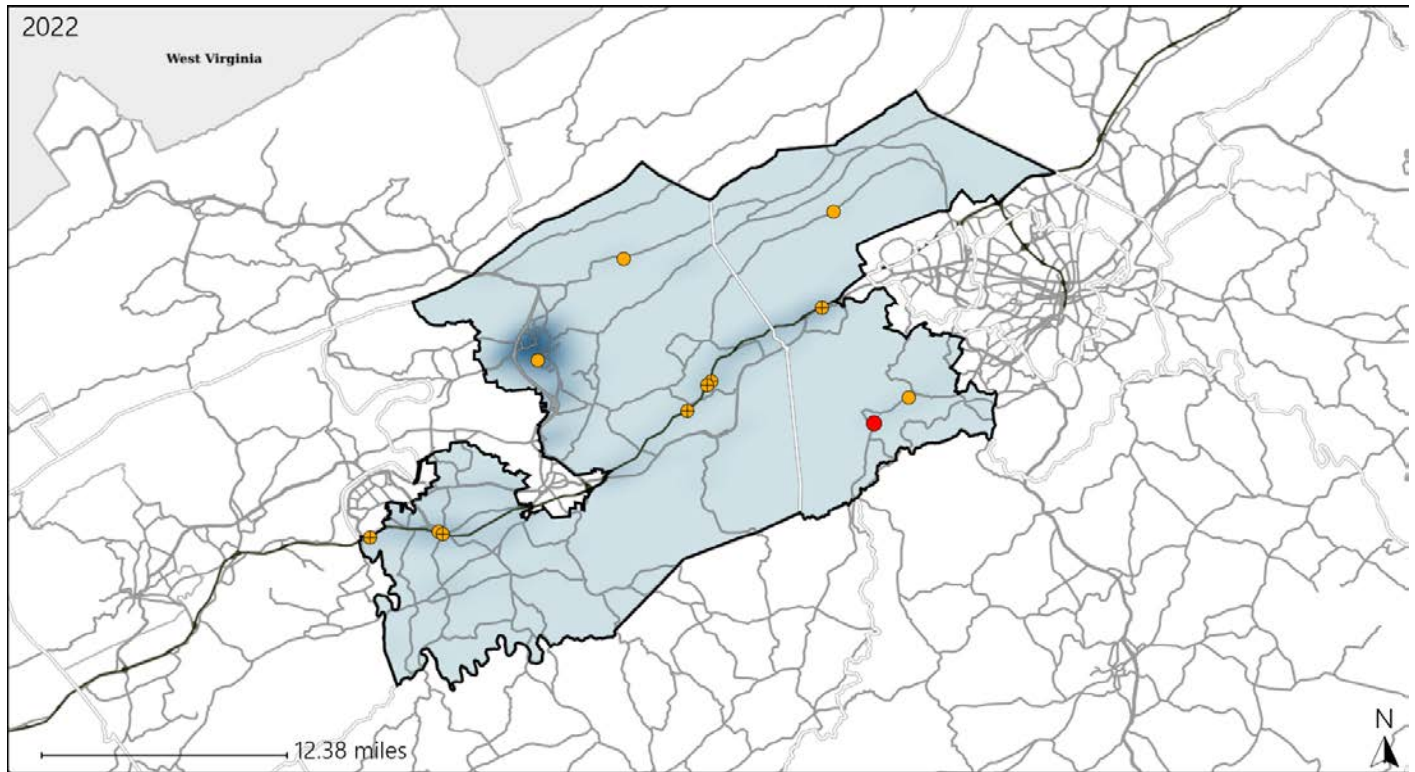


Available Crash Data - Calendar Year (CY)	CY 2019	CY 2020	CY 2021	CY 2022
Total Crashes	1519	1186	1368	1514
Fatal Crashes	9	11	7	8
Injury Crashes	528	429	484	526
Pedestrian-Related Fatal Crashes	0	0	1	2
Percent of Pedestrian-Related Fatal Crashes to Total Fatal Crashes	0%	0%	14%	25%
Pedestrian-Related Injury Crashes	17	13	20	27
Percent of Pedestrian-Related Injury Crashes to Total Injury Crashes	3%	3%	4%	5%

# Virginia House District 41 Distracted Driving Crash Statistics

Report Generated May, 2023

	Count	Highest Time Period(s)	Highest Day(s)	Highest Month(s)
<b>Fatal Crashes</b>	<b>1</b>	<b>Midnight - 2:59am</b>	<b>Sunday</b>	<b>November</b>
<b>Resulting Fatalities</b>	<b>1</b>	(100%)	(100%)	(100%)
<b>Serious Injury Crashes</b>	<b>11</b>	<b>3:00am - 5:59am 6:00am - 8:59am</b>	<b>Monday</b>	<b>August • October</b>
		(54%)	(27%)	(54%)



## House District 41 Distracted Driving-Related Crashes

- |  |  |
|--|--|
| Interstate Crashes                                   | Non-interstate Crashes                               |
| <span style="color: red;">●</span> Fatal             | <span style="color: red;">●</span> Fatal             |
| <span style="color: orange;">⊕</span> Serious Injury | <span style="color: orange;">●</span> Serious Injury |

The blue gradient represents the density of all distracted driving-related crashes.



Available Crash Data - Calendar Year (CY)	CY 2019	CY 2020	CY 2021	CY 2022
Total Crashes	1519	1186	1368	1514
Fatal Crashes	9	11	7	8
Injury Crashes	528	429	484	526
Distracted Driving-Related Fatal Crashes	1	1	4	1
Percent of Distracted Driving-Related Fatal Crashes to Total Fatal Crashes	11%	9%	57%	13%
Distracted Driving-Related Injury Crashes	76	75	89	78
Percent of Distracted Driving-Related Injury Crashes to Total Injury Crashes	14%	17%	18%	15%