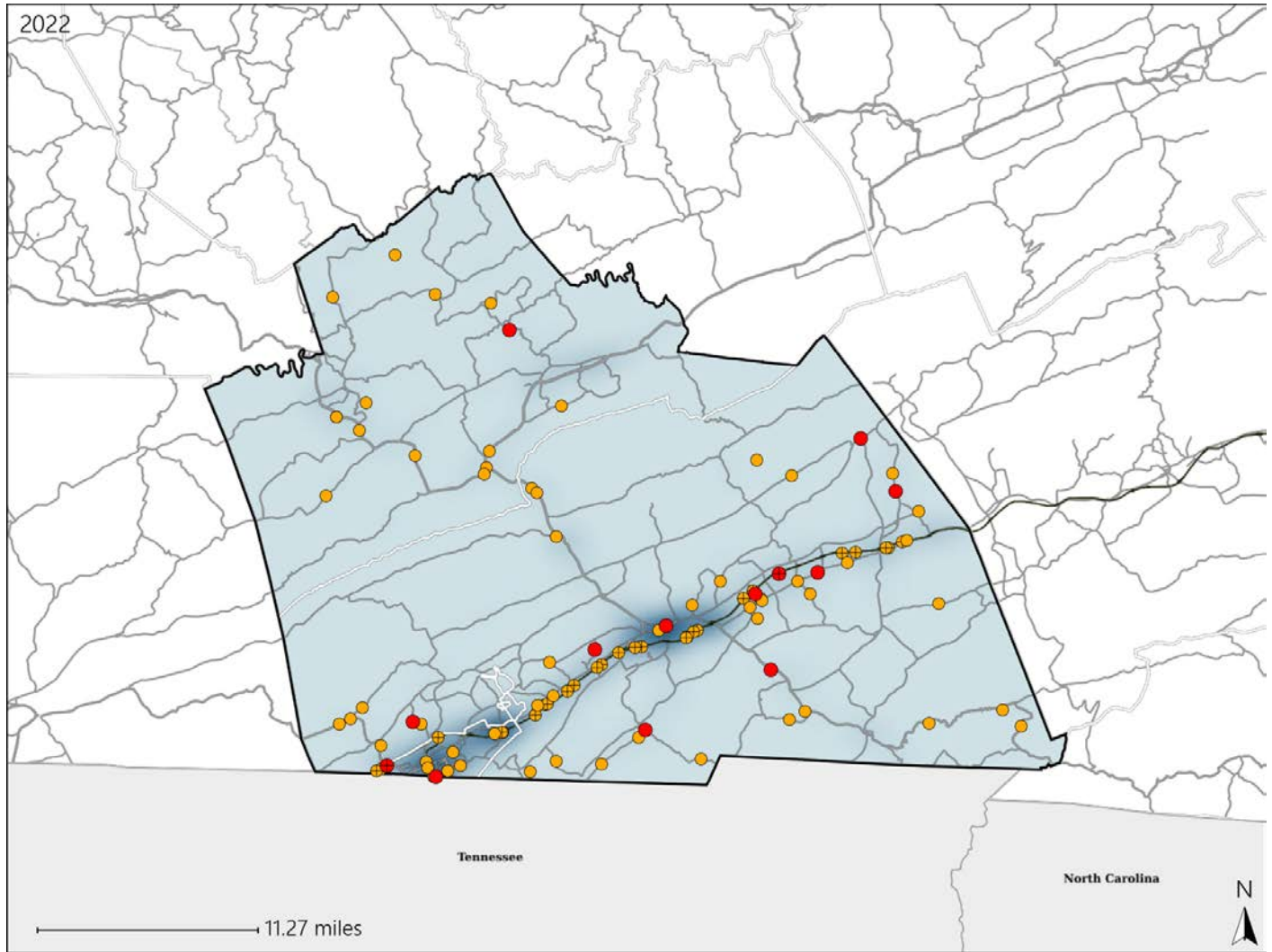


# Virginia House District 44 Crash Statistics

Report Generated May, 2023

	Count	Highest Time Period(s)	Highest Day(s)	Highest Month(s)
<b>Fatal Crashes</b>	<b>13</b>	Noon - 2:59pm (38%)	Wednesday (31%)	August (23%)
<b>Resulting Fatalities</b>	<b>15</b>			
<b>Serious Injury Crashes</b>	<b>85</b>	3:00pm - 5:59pm (26%)	Wednesday (19%)	March (13%)



## House District 44 Crashes

Interstate Crashes

- Fatal
- Serious Injury

Non-interstate Crashes

- Fatal
- Serious Injury

The blue gradient represents the density of all crashes.

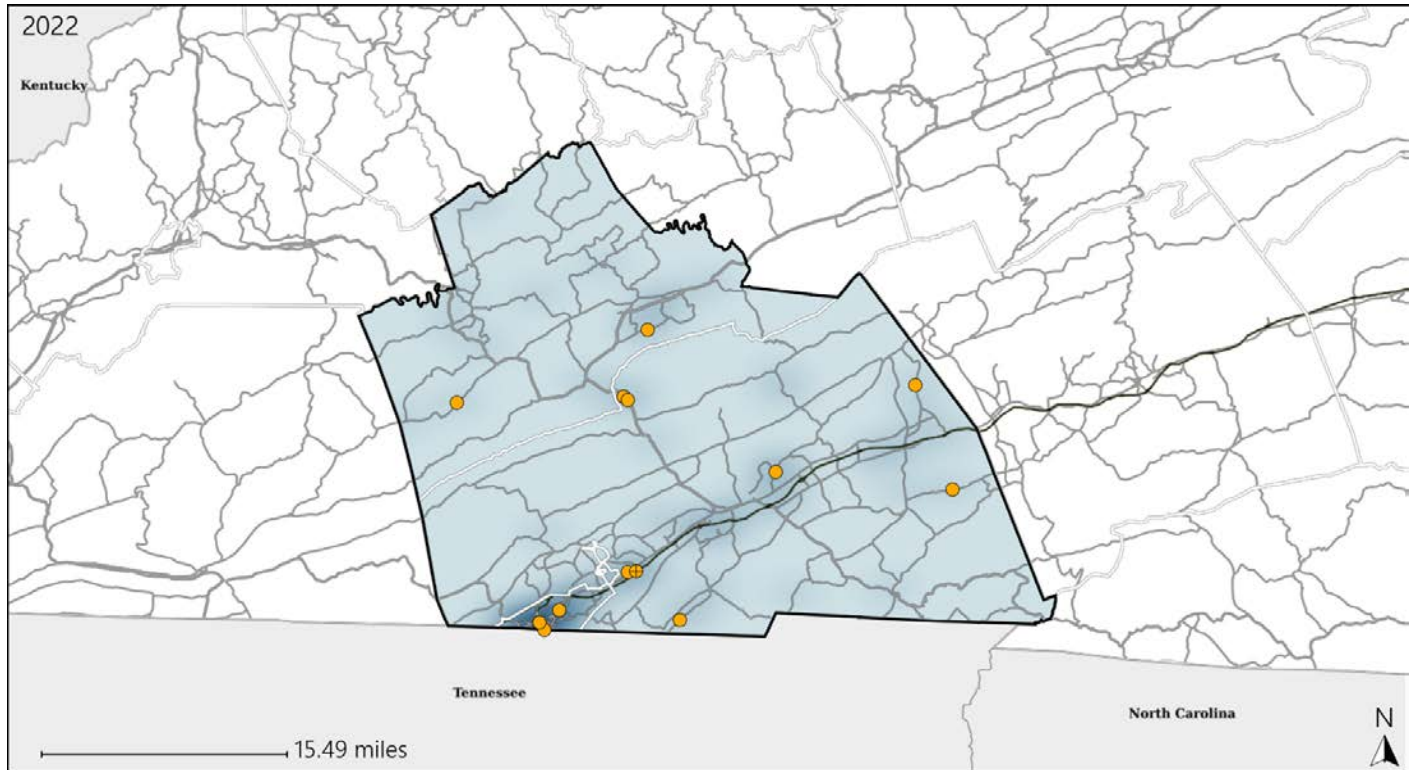


Available Crash Data - Calendar Year (CY)	CY 2019	CY 2020	CY 2021	CY 2022
Total Crashes	1584	1432	1519	1617
Fatal Crashes	13	15	13	13
Injury Crashes	512	436	475	540

# Virginia House District 44 Alcohol Crash Statistics

Report Generated May, 2023

	Count	Highest Time Period(s)	Highest Day(s)	Highest Month(s)
<b>Fatal Crashes</b>	<b>0</b>	-	-	-
<b>Resulting Fatalities</b>	<b>0</b>	-	-	-
<b>Serious Injury Crashes</b>	<b>13</b>	<b>9:00pm - 11:59pm</b> (38%)	<b>Saturday • Sunday</b> (62%)	<b>February</b> (23%)



## House District 44 Alcohol-Related Crashes

Interstate Crashes                      Non-interstate Crashes  
 ● Fatal                                      ● Fatal  
 ⊕ Serious Injury                          ⊕ Serious Injury

The blue gradient represents the density of all alcohol-related crashes.

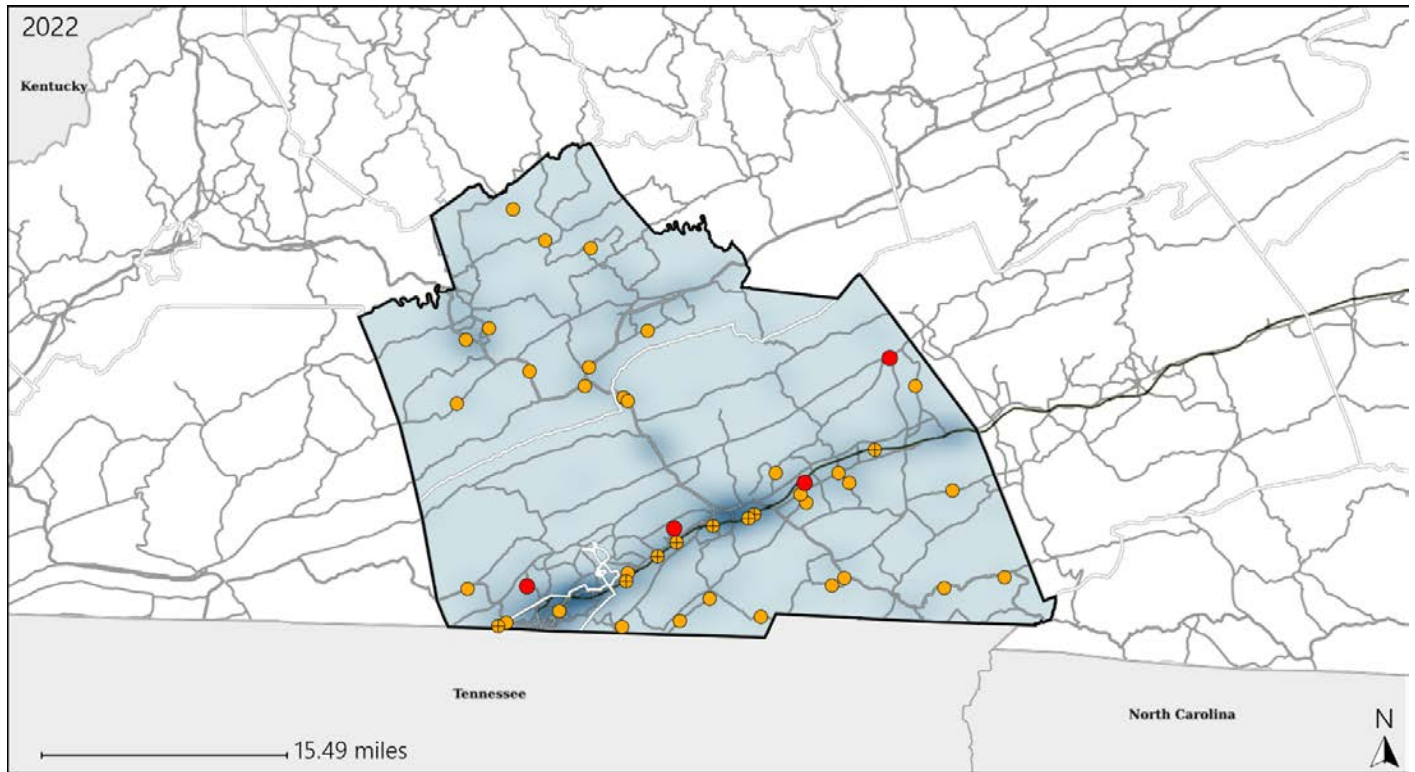


Available Crash Data - Calendar Year (CY)	CY 2019	CY 2020	CY 2021	CY 2022
Total Crashes	1584	1432	1519	1617
Fatal Crashes	13	15	13	13
Injury Crashes	512	436	475	540
Alcohol-Related Fatal Crashes	3	6	1	0
Percent of Alcohol-Related Fatal Crashes to Total Fatal Crashes	23%	40%	8%	0%
Alcohol-Related Injury Crashes	34	30	20	27
Percent of Alcohol-Related Injury Crashes to Total Injury Crashes	7%	7%	4%	5%

# Virginia House District 44 Speed Crash Statistics

Report Generated May, 2023

	Count	Highest Time Period(s)	Highest Day(s)	Highest Month(s)
<b>Fatal Crashes</b>	<b>4</b>	<b>9:00pm - 11:59pm</b>	<b>Friday • Monday</b>	<b>April • January</b>
<b>Resulting Fatalities</b>	<b>4</b>	(50%)	(50%)	(50%)
<b>Serious Injury Crashes</b>	<b>39</b>	<b>3:00pm - 5:59pm</b> <b>9:00pm - 11:59pm</b>	<b>Sunday</b>	<b>March</b>
		(42%)	(23%)	(18%)



## House District 44 Speed-Related Crashes

Interstate Crashes                      Non-interstate Crashes  
 ● Fatal                                      ● Fatal  
 ⊕ Serious Injury                          ⊕ Serious Injury

The blue gradient represents the density of all speed-related crashes.

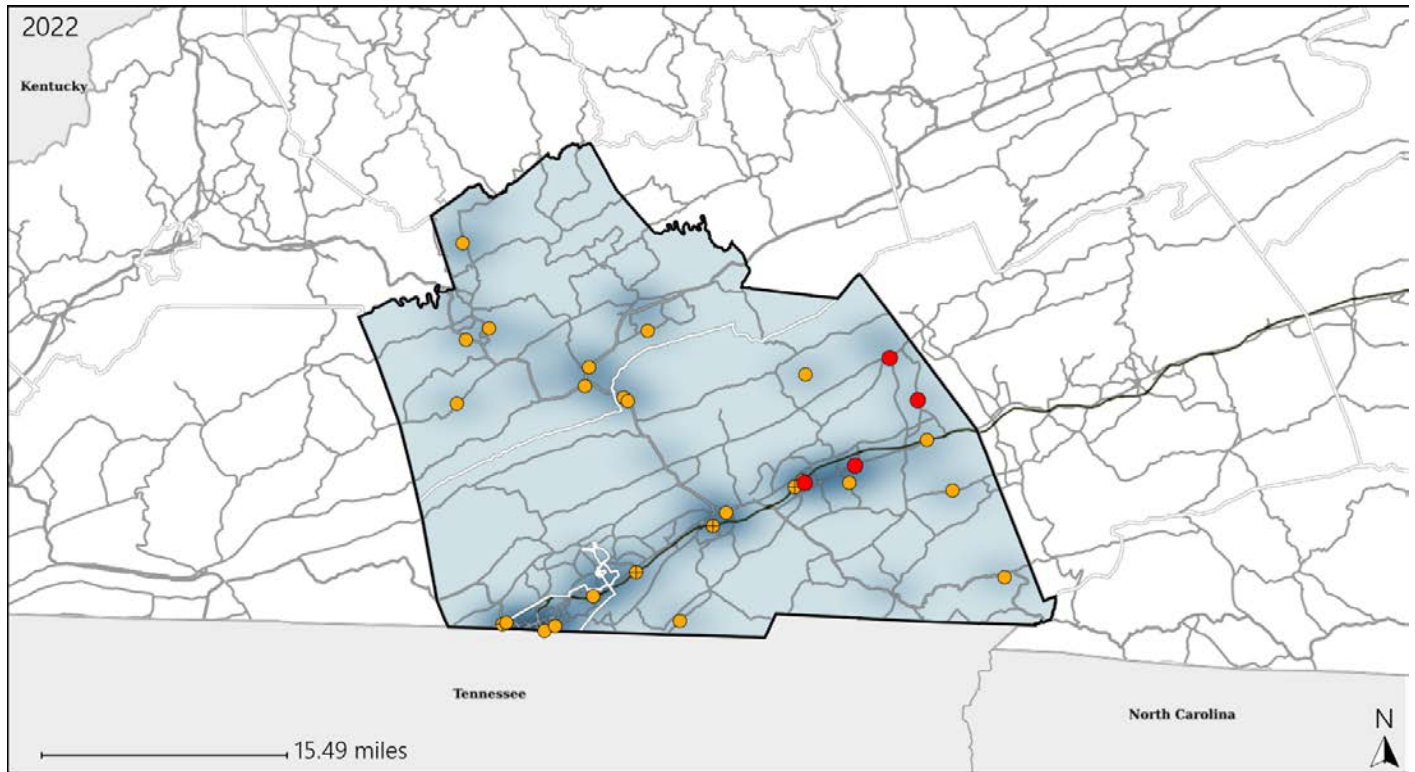


Available Crash Data - Calendar Year (CY)	CY 2019	CY 2020	CY 2021	CY 2022
Total Crashes	1584	1432	1519	1617
Fatal Crashes	13	15	13	13
Injury Crashes	512	436	475	540
Speed-Related Fatal Crashes	3	9	3	4
Percent of Speed-Related Fatal Crashes to Total Fatal Crashes	23%	60%	23%	31%
Speed-Related Injury Crashes	172	154	137	130
Percent of Speed-Related Injury Crashes to Total Injury Crashes	34%	35%	29%	24%

# Virginia House District 44 Unrestrained Crash Statistics

Report Generated May, 2023

	Count	Highest Time Period(s)	Highest Day(s)	Highest Month(s)
<b>Fatal Crashes</b>	<b>4</b>	<b>Noon - 2:59pm</b>	<b>Friday • Wednesday</b>	<b>August • January</b>
<b>Unrestrained Fatalities</b>	<b>4</b>	(50%)	(100%)	(50%)
<b>Serious Injury Crashes</b>	<b>25</b>	<b>3:00pm - 5:59pm</b> <b>6:00pm - 8:59pm</b>	<b>Monday</b>	<b>February</b>
		(40%)	(24%)	(20%)



## House District 44 Unrestrained-Related Crashes

- |                    |                        |
|--------------------|------------------------|
| Interstate Crashes | Non-interstate Crashes |
| ● Fatal            | ● Fatal                |
| ⊕ Serious Injury   | ● Serious Injury       |

The blue gradient represents the density of all unrestrained-related crashes.

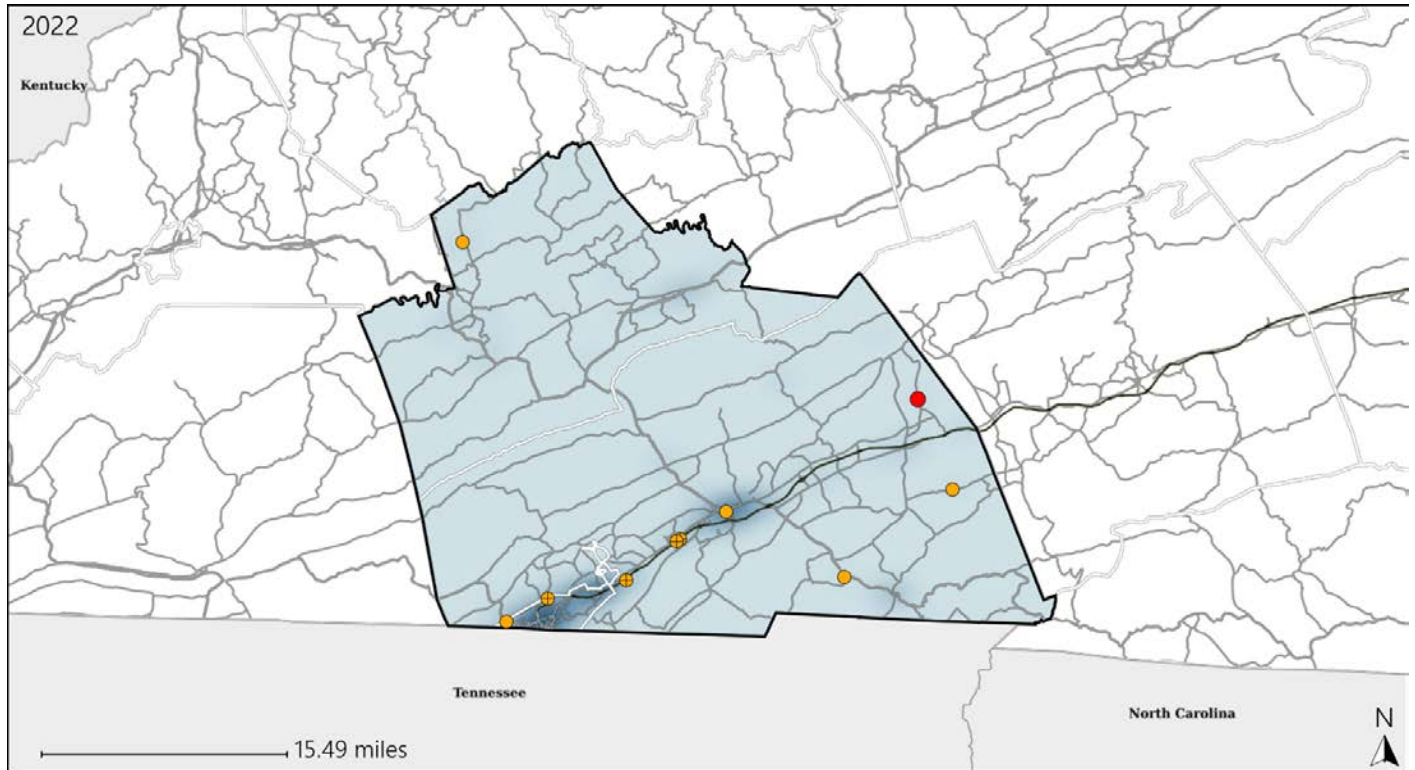


Available Crash Data - Calendar Year (CY)	CY 2019	CY 2020	CY 2021	CY 2022
Total Crashes	1584	1432	1519	1617
Fatalities	14	17	15	15
Injuries	728	623	642	766
Unrestrained Fatalities	3	8	5	4
Percent of Unrestrained Fatalities to Total Fatalities	21%	47%	33%	27%
Unrestrained Injuries	47	73	38	60
Percent of Unrestrained Injuries to Total Injuries	6%	12%	6%	8%

# Virginia House District 44 Distracted Driving Crash Statistics

Report Generated May, 2023

	Count	Highest Time Period(s)	Highest Day(s)	Highest Month(s)
<b>Fatal Crashes</b>	<b>1</b>	<b>3:00pm - 5:59pm</b>	<b>Wednesday</b>	<b>March</b>
<b>Resulting Fatalities</b>	<b>1</b>	<b>(100%)</b>	<b>(100%)</b>	<b>(100%)</b>
<b>Serious Injury Crashes</b>	<b>9</b>	<b>3:00pm - 5:59pm</b>	<b>Monday</b>	<b>September</b>
		<b>(33%)</b>	<b>(33%)</b>	<b>(33%)</b>



## House District 44 Distracted Driving-Related Crashes

- |                    |                        |
|--------------------|------------------------|
| Interstate Crashes | Non-interstate Crashes |
| Fatal              | Fatal                  |
| Serious Injury     | Serious Injury         |

The blue gradient represents the density of all distracted driving-related crashes.



Available Crash Data - Calendar Year (CY)	CY 2019	CY 2020	CY 2021	CY 2022
Total Crashes	1584	1432	1519	1617
Fatal Crashes	13	15	13	13
Injury Crashes	512	436	475	540
Distracted Driving-Related Fatal Crashes	3	0	3	1
Percent of Distracted Driving-Related Fatal Crashes to Total Fatal Crashes	23%	0%	23%	8%
Distracted Driving-Related Injury Crashes	78	72	90	83
Percent of Distracted Driving-Related Injury Crashes to Total Injury Crashes	15%	17%	19%	15%