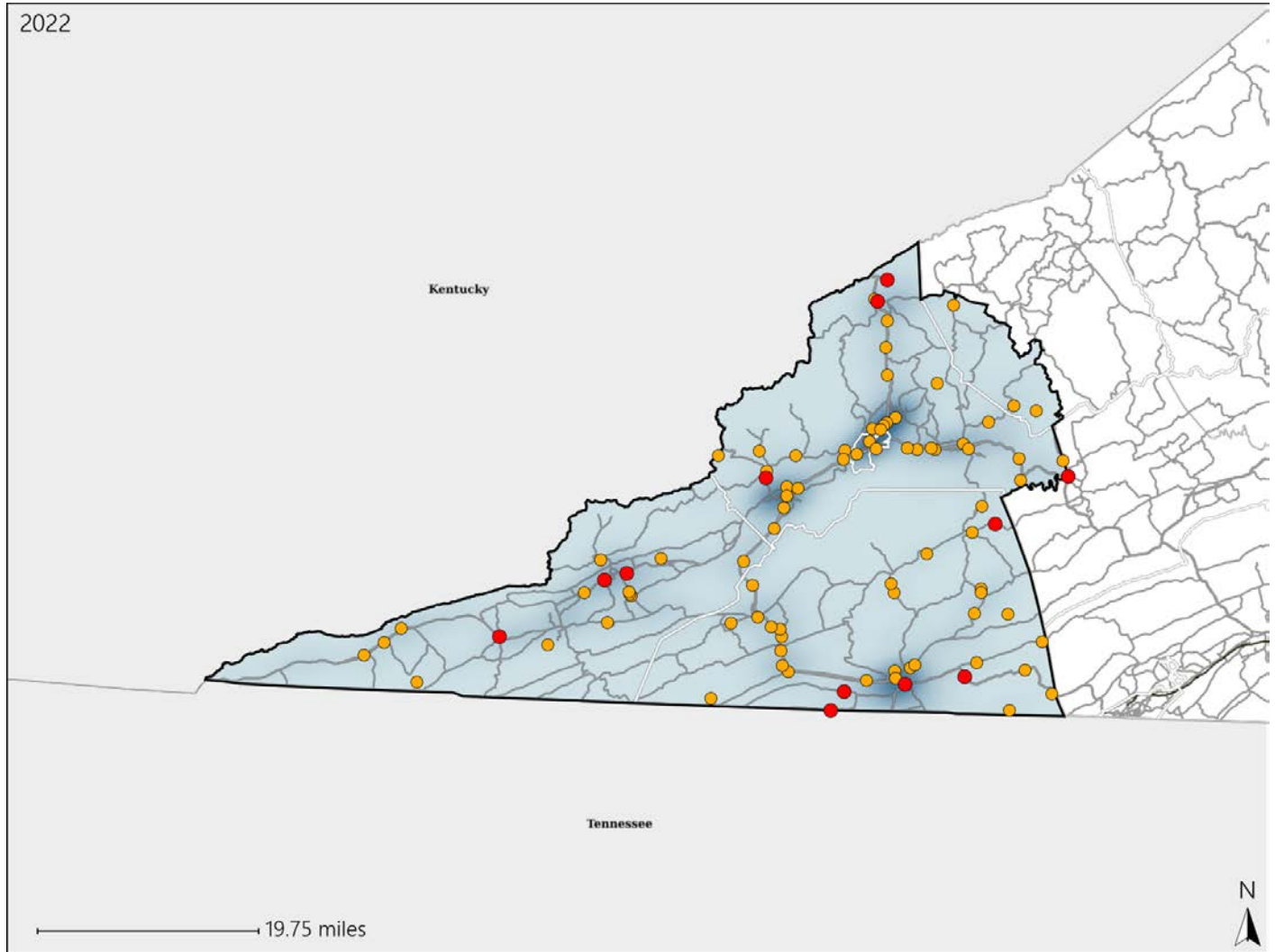


# Virginia House District 45 Crash Statistics

Report Generated May, 2023

	Count	Highest Time Period(s)	Highest Day(s)	Highest Month(s)
<b>Fatal Crashes</b>	<b>12</b>	3:00pm - 5:59pm	Friday - Thursday	May
<b>Resulting Fatalities</b>	<b>12</b>	9:00am - 11:59am (50%)	(66%)	(25%)
<b>Serious Injury Crashes</b>	<b>79</b>	3:00pm - 5:59pm (23%)	Saturday (19%)	June (15%)



### House District 45 Crashes

Interstate Crashes

- Fatal
- Serious Injury

Non-interstate Crashes

- Fatal
- Serious Injury

The blue gradient represents the density of all crashes.

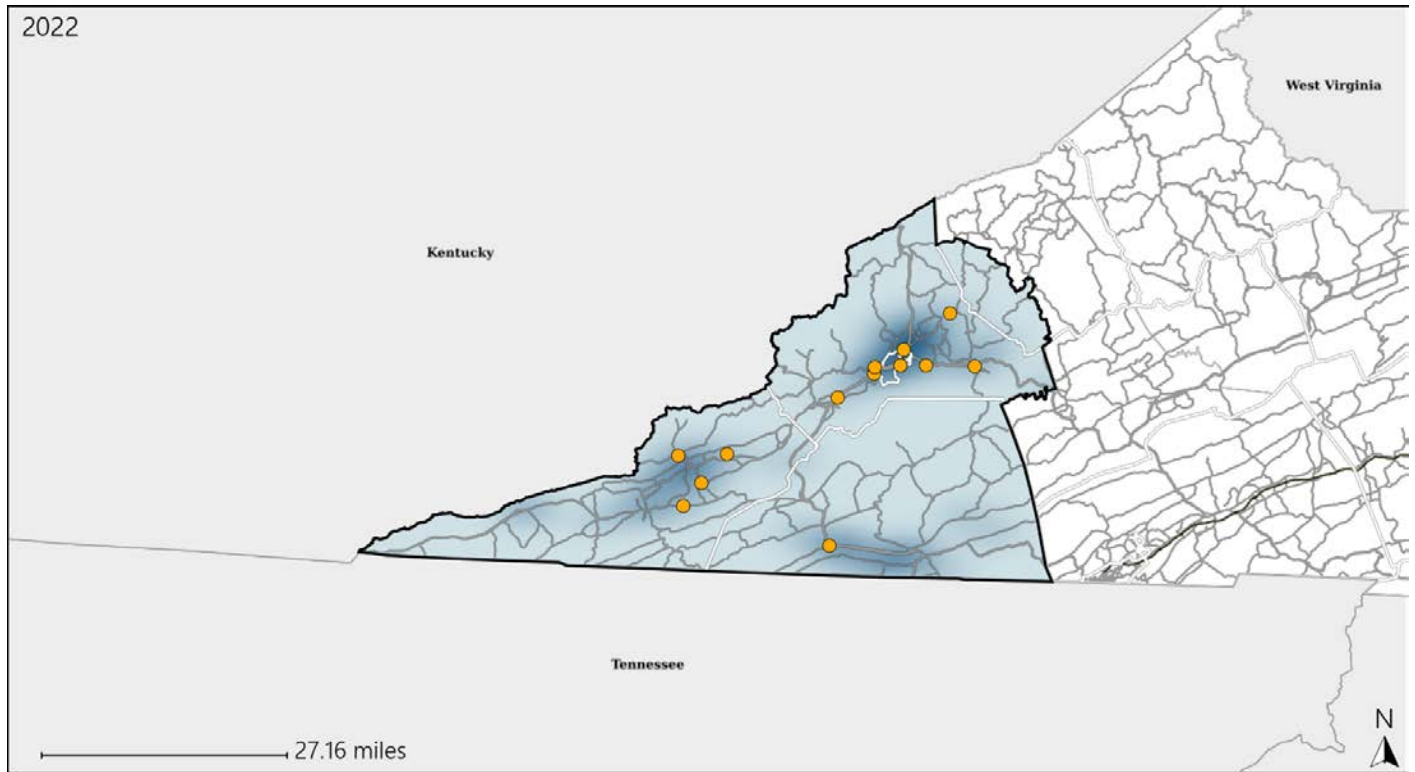


Available Crash Data - Calendar Year (CY)	CY 2019	CY 2020	CY 2021	CY 2022
Total Crashes	1212	1088	1141	1058
Fatal Crashes	13	13	7	12
Injury Crashes	352	305	317	317

# Virginia House District 45 Alcohol Crash Statistics

Report Generated May, 2023

	Count	Highest Time Period(s)	Highest Day(s)	Highest Month(s)
<b>Fatal Crashes</b>	<b>0</b>	-	-	-
<b>Resulting Fatalities</b>	<b>0</b>	-	-	-
<b>Serious Injury Crashes</b>	<b>13</b>	3:00am - 5:59am 6:00pm - 8:59pm (46%)	Saturday (31%)	June (23%)



## House District 45 Alcohol-Related Crashes

Interstate Crashes                      Non-interstate Crashes  
 ● Fatal                                      ● Fatal  
 ⊕ Serious Injury                          ● Serious Injury

The blue gradient represents the density of all alcohol-related crashes.

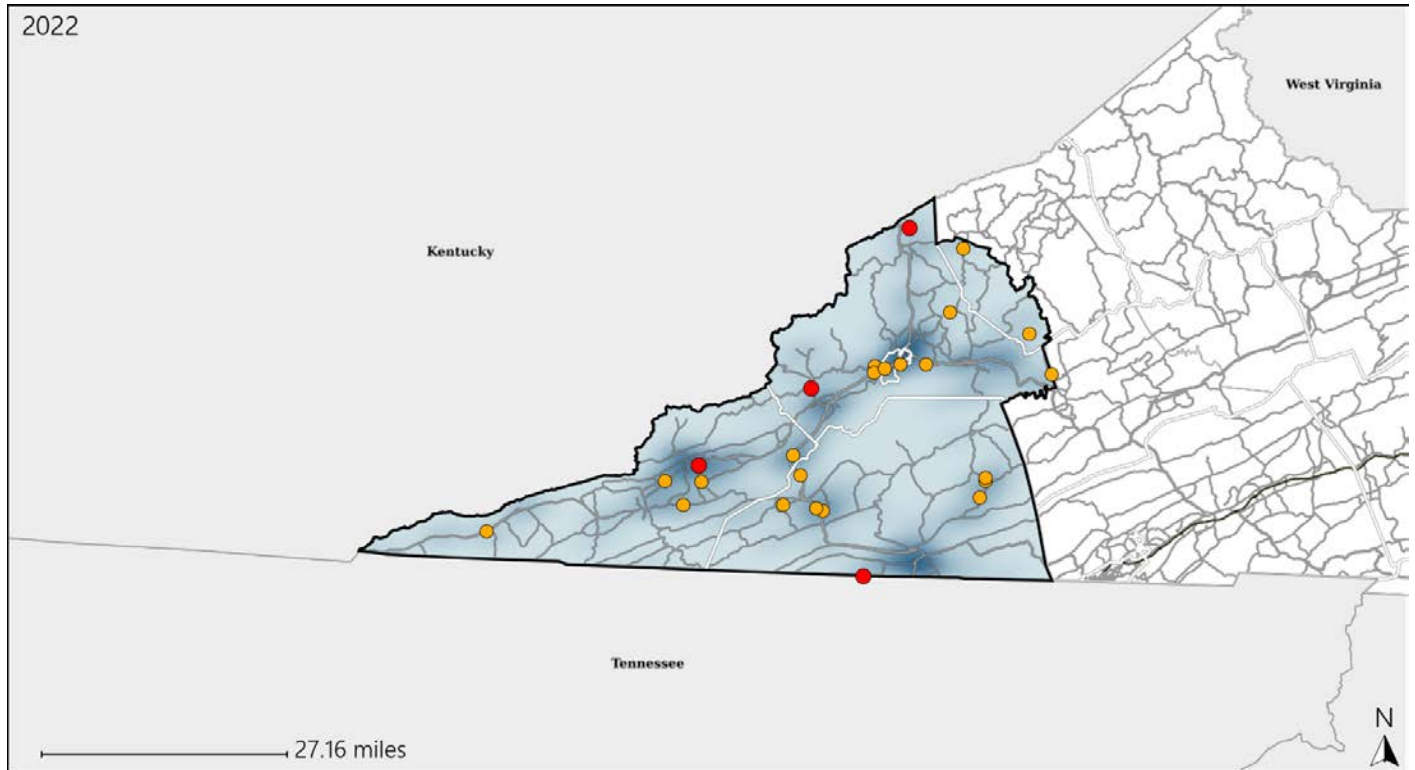


Available Crash Data - Calendar Year (CY)	CY 2019	CY 2020	CY 2021	CY 2022
Total Crashes	1212	1088	1141	1058
Fatal Crashes	13	13	7	12
Injury Crashes	352	305	317	317
Alcohol-Related Fatal Crashes	2	3	0	0
Percent of Alcohol-Related Fatal Crashes to Total Fatal Crashes	15%	23%	0%	0%
Alcohol-Related Injury Crashes	23	20	23	24
Percent of Alcohol-Related Injury Crashes to Total Injury Crashes	7%	7%	7%	8%

# Virginia House District 45 Speed Crash Statistics

Report Generated May, 2023

	Count	Highest Time Period(s)	Highest Day(s)	Highest Month(s)
<b>Fatal Crashes</b>	<b>4</b>	<b>3:00pm - 5:59pm</b>	<b>Friday</b>	<b>April + March</b>
<b>Resulting Fatalities</b>	<b>4</b>	(50%)	(75%)	(50%)
<b>Serious Injury Crashes</b>	<b>21</b>	<b>3:00pm - 5:59pm</b>	<b>Saturday</b>	<b>January</b>
		(29%)	(29%)	(24%)



## House District 45 Speed-Related Crashes

Interstate Crashes                      Non-interstate Crashes  
 ● Fatal                                      ● Fatal  
 ● Serious Injury                          ● Serious Injury

The blue gradient represents the density of all speed-related crashes.

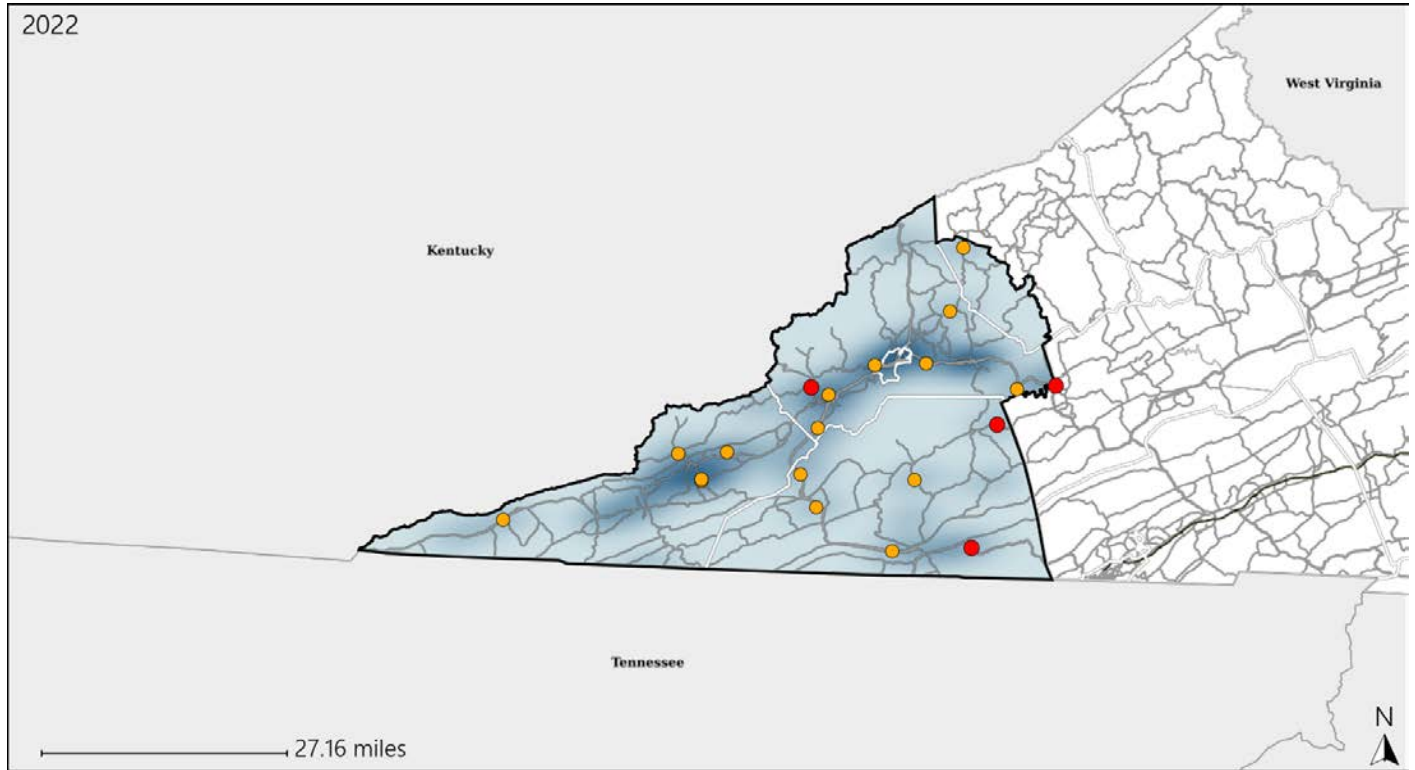


Available Crash Data - Calendar Year (CY)	CY 2019	CY 2020	CY 2021	CY 2022
Total Crashes	1212	1088	1141	1058
Fatal Crashes	13	13	7	12
Injury Crashes	352	305	317	317
Speed-Related Fatal Crashes	6	2	3	4
Percent of Speed-Related Fatal Crashes to Total Fatal Crashes	46%	15%	43%	33%
Speed-Related Injury Crashes	108	76	89	80
Percent of Speed-Related Injury Crashes to Total Injury Crashes	31%	25%	28%	25%

# Virginia House District 45 Unrestrained Crash Statistics

Report Generated May, 2023

	Count	Highest Time Period(s)	Highest Day(s)	Highest Month(s)
<b>Fatal Crashes</b>	<b>4</b>	3:00pm - 5:59pm	Thursday	June • March
<b>Unrestrained Fatalities</b>	<b>4</b>	9:00am - 11:59am (50%)	(50%)	(50%)
<b>Serious Injury Crashes</b>	<b>16</b>	Midnight - 2:59am (31%)	Saturday (38%)	January (25%)



## House District 45 Unrestrained-Related Crashes

Interstate Crashes

Non-interstate Crashes

- Fatal
- Serious Injury

- Fatal
- Serious Injury

The blue gradient represents the density of all unrestrained-related crashes.

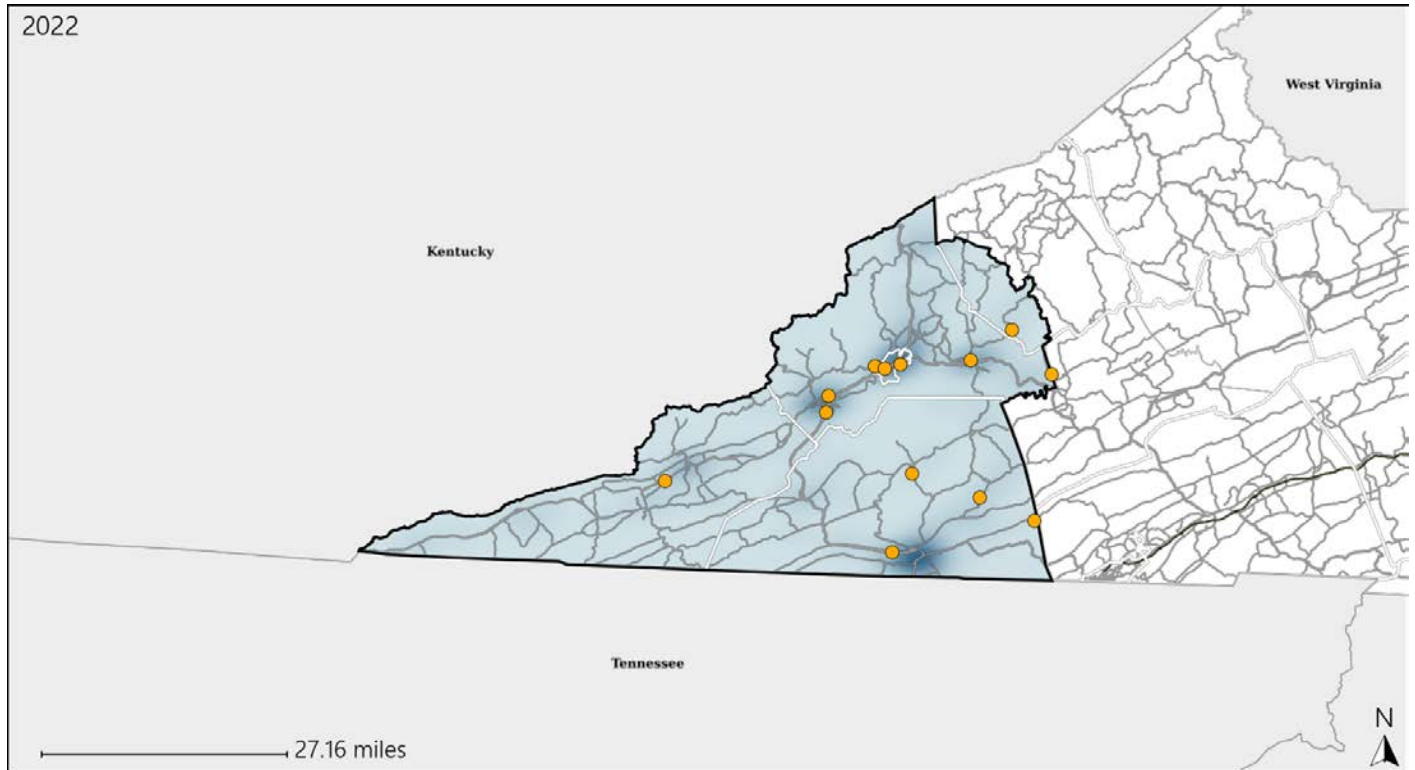


Available Crash Data - Calendar Year (CY)	CY 2019	CY 2020	CY 2021	CY 2022
Total Crashes	1212	1088	1141	1058
Fatalities	14	14	7	12
Injuries	515	477	453	477
Unrestrained Fatalities	5	5	3	4
Percent of Unrestrained Fatalities to Total Fatalities	36%	36%	43%	33%
Unrestrained Injuries	73	77	48	58
Percent of Unrestrained Injuries to Total Injuries	14%	16%	11%	12%

# Virginia House District 45 Distracted Driving Crash Statistics

Report Generated May, 2023

	Count	Highest Time Period(s)	Highest Day(s)	Highest Month(s)
<b>Fatal Crashes</b>	<b>0</b>	-	-	-
<b>Resulting Fatalities</b>	<b>0</b>	-	-	-
<b>Serious Injury Crashes</b>	<b>13</b>	<b>3:00pm - 5:59pm</b> (31%)	<b>Wednesday</b> (23%)	<b>June</b> (23%)



## House District 45 Distracted Driving-Related Crashes

- |                    |                        |
|--------------------|------------------------|
| Interstate Crashes | Non-interstate Crashes |
| Fatal              | Fatal                  |
| Serious Injury     | Serious Injury         |

The blue gradient represents the density of all distracted driving-related crashes.



Available Crash Data - Calendar Year (CY)	CY 2019	CY 2020	CY 2021	CY 2022
<b>Total Crashes</b>	<b>1212</b>	<b>1088</b>	<b>1141</b>	<b>1058</b>
<b>Fatal Crashes</b>	<b>13</b>	<b>13</b>	<b>7</b>	<b>12</b>
<b>Injury Crashes</b>	<b>352</b>	<b>305</b>	<b>317</b>	<b>317</b>
<b>Distracted Driving-Related Fatal Crashes</b>	<b>2</b>	<b>0</b>	<b>1</b>	<b>0</b>
<b>Percent of Distracted Driving-Related Fatal Crashes to Total Fatal Crashes</b>	<b>15%</b>	<b>0%</b>	<b>14%</b>	<b>0%</b>
<b>Distracted Driving-Related Injury Crashes</b>	<b>51</b>	<b>55</b>	<b>51</b>	<b>52</b>
<b>Percent of Distracted Driving-Related Injury Crashes to Total Injury Crashes</b>	<b>14%</b>	<b>18%</b>	<b>16%</b>	<b>16%</b>