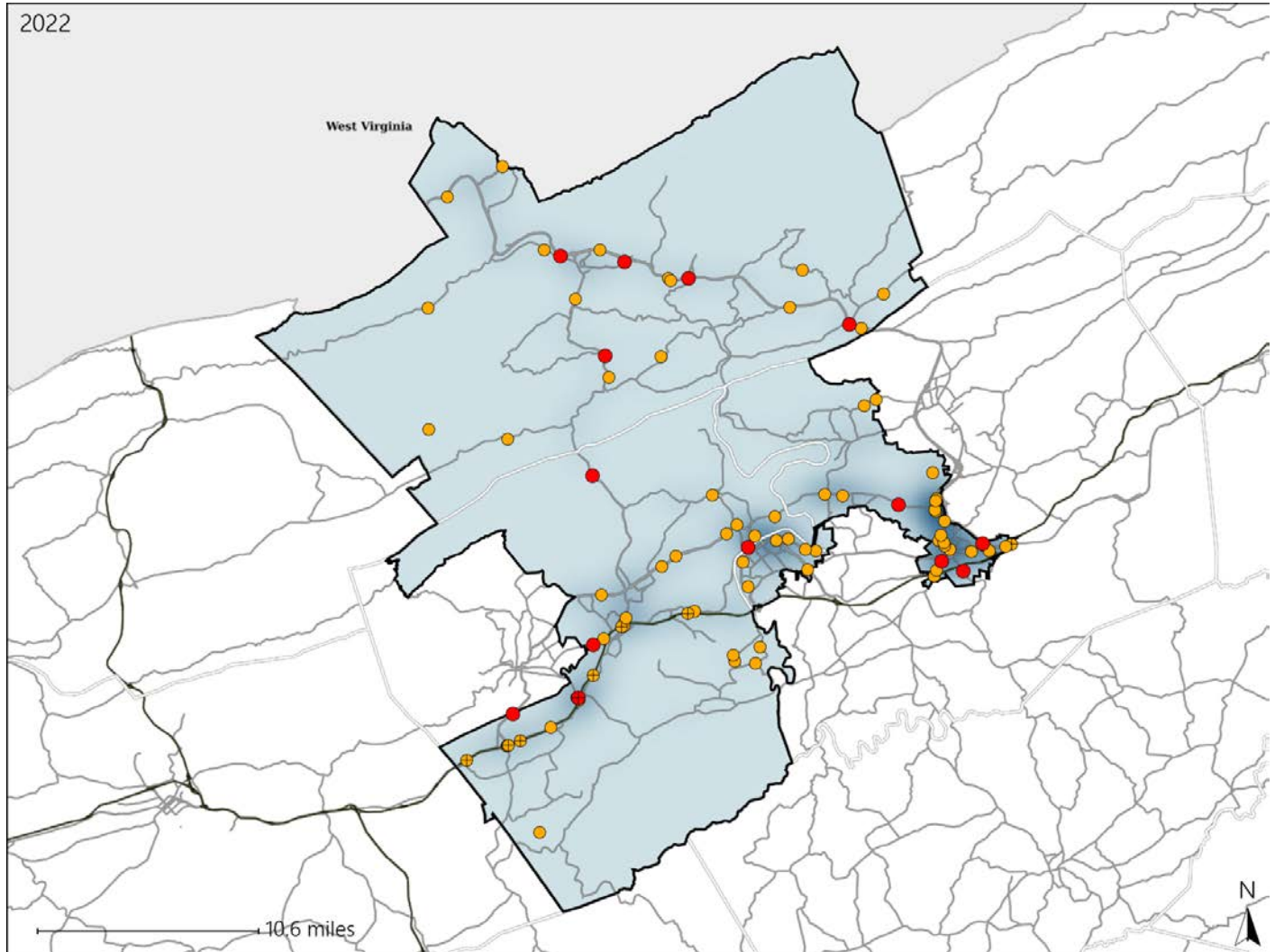


Virginia House District 42 Crash Statistics

Report Generated May, 2023

	Count	Highest Time Period(s)	Highest Day(s)	Highest Month(s)
Fatal Crashes	14	6:00pm - 8:59pm	Monday	April - February
Resulting Fatalities	15	9:00pm - 11:59pm (42%)	(36%)	(28%)
Serious Injury Crashes	75	3:00pm - 5:59pm (20%)	Sunday - Tuesday (32%)	April (13%)



House District 42 Crashes

Interstate Crashes

- Fatal
- ⊕ Serious Injury

Non-interstate Crashes

- Fatal
- Serious Injury

The blue gradient represents the density of all crashes.

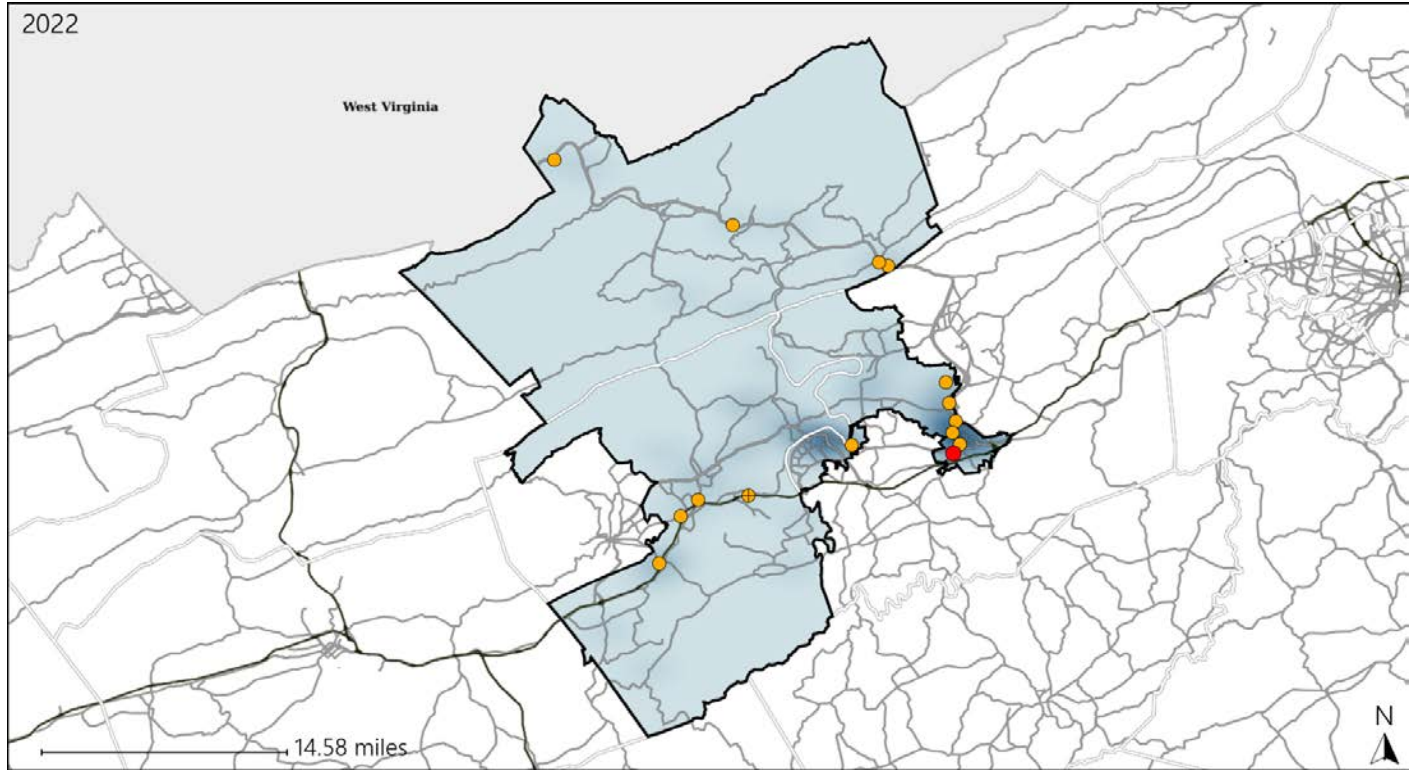


Available Crash Data - Calendar Year (CY)	CY 2019	CY 2020	CY 2021	CY 2022
Total Crashes	1368	1067	1255	1354
Fatal Crashes	12	11	9	14
Injury Crashes	437	350	393	439

Virginia House District 42 Alcohol Crash Statistics

Report Generated May, 2023

	Count	Highest Time Period(s)	Highest Day(s)	Highest Month(s)
Fatal Crashes	1	9:00pm - 11:59pm	Monday	April
Resulting Fatalities	1	(100%)	(100%)	(100%)
Serious Injury Crashes	14	6:00pm - 8:59pm	Friday • Sunday	February • May
		(36%)	(58%)	(42%)



House District 42 Alcohol-Related Crashes

Interstate Crashes Non-interstate Crashes
 ● Fatal ● Fatal
 ⊕ Serious Injury ⊕ Serious Injury

The blue gradient represents the density of all alcohol-related crashes.

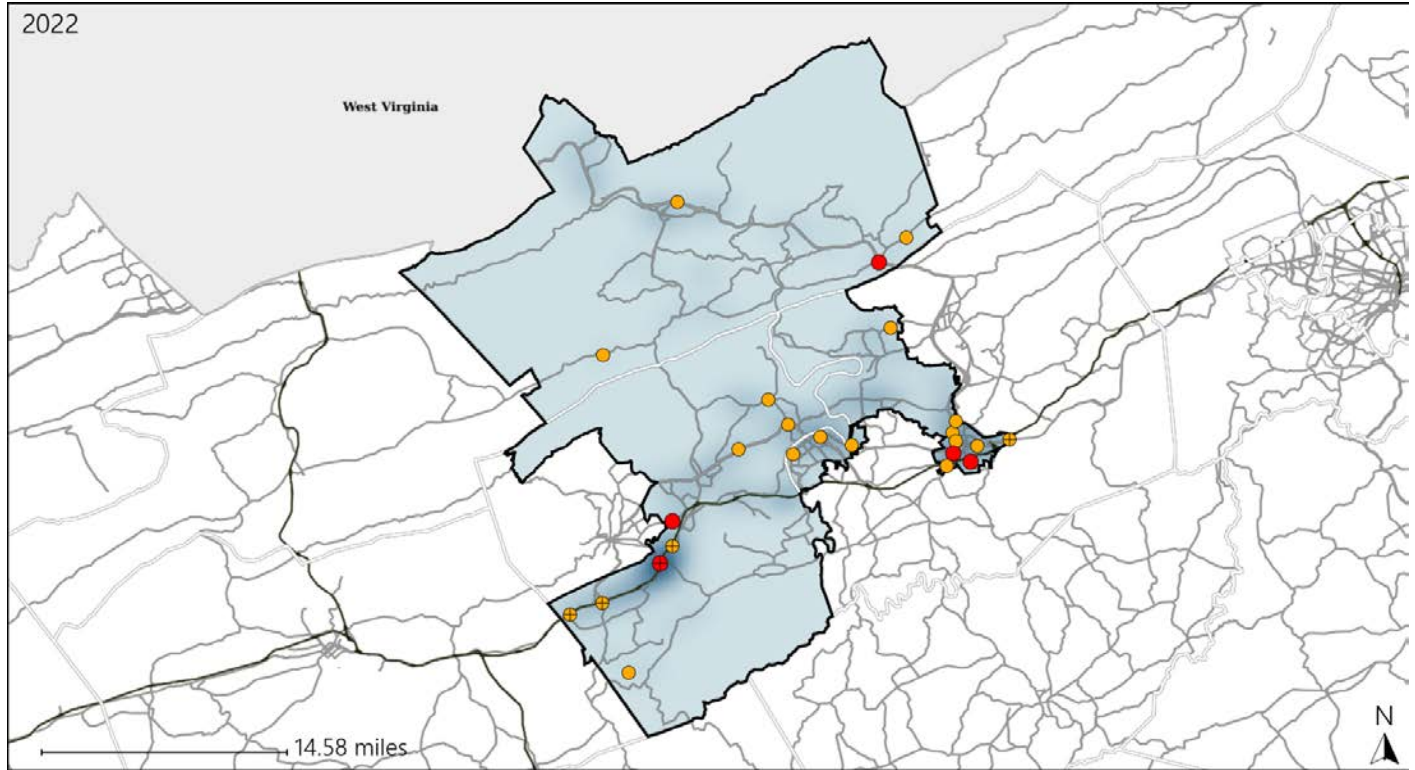


Available Crash Data - Calendar Year (CY)	CY 2019	CY 2020	CY 2021	CY 2022
Total Crashes	1368	1067	1255	1354
Fatal Crashes	12	11	9	14
Injury Crashes	437	350	393	439
Alcohol-Related Fatal Crashes	6	2	2	1
Percent of Alcohol-Related Fatal Crashes to Total Fatal Crashes	50%	18%	22%	7%
Alcohol-Related Injury Crashes	32	27	24	40
Percent of Alcohol-Related Injury Crashes to Total Injury Crashes	7%	8%	6%	9%

Virginia House District 42 Speed Crash Statistics

Report Generated May, 2023

	Count	Highest Time Period(s)	Highest Day(s)	Highest Month(s)
Fatal Crashes	5	9:00pm - 11:59pm	Monday	April
Resulting Fatalities	5	(40%)	(40%)	(40%)
Serious Injury Crashes	20	3:00pm - 5:59pm	Thursday	December
		(20%)	(20%)	(30%)



House District 42 Speed-Related Crashes

Interstate Crashes Non-interstate Crashes
 ● Fatal ● Fatal
 ⊕ Serious Injury ⊕ Serious Injury

The blue gradient represents the density of all speed-related crashes.

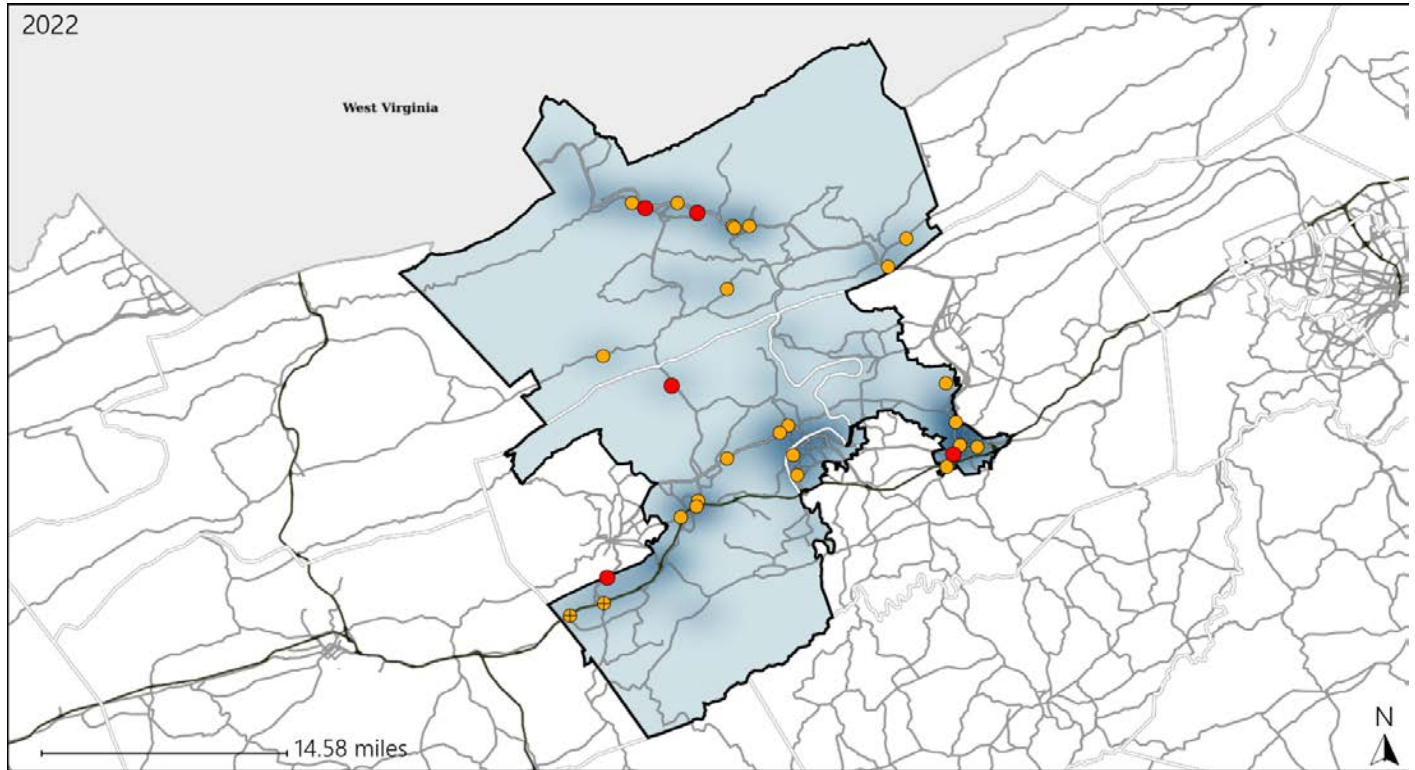


Available Crash Data - Calendar Year (CY)	CY 2019	CY 2020	CY 2021	CY 2022
Total Crashes	1368	1067	1255	1354
Fatal Crashes	12	11	9	14
Injury Crashes	437	350	393	439
Speed-Related Fatal Crashes	1	4	4	5
Percent of Speed-Related Fatal Crashes to Total Fatal Crashes	8%	36%	44%	36%
Speed-Related Injury Crashes	85	67	75	89
Percent of Speed-Related Injury Crashes to Total Injury Crashes	19%	19%	19%	20%

Virginia House District 42 Unrestrained Crash Statistics

Report Generated May, 2023

	Count	Highest Time Period(s)	Highest Day(s)	Highest Month(s)
Fatal Crashes	5	9:00pm - 11:59pm	Monday	April - February
Unrestrained Fatalities	5	Midnight - 2:59am (80%)	(60%)	(40%)
Serious Injury Crashes	24	6:00pm - 8:59pm (25%)	Friday (33%)	December (25%)



House District 42 Unrestrained-Related Crashes

- | | |
|------------------------------------------------------|------------------------------------------------------|
| Interstate Crashes | Non-interstate Crashes |
| ● Fatal | ● Fatal |
| ● Serious Injury | ● Serious Injury |

The blue gradient represents the density of all unrestrained-related crashes.

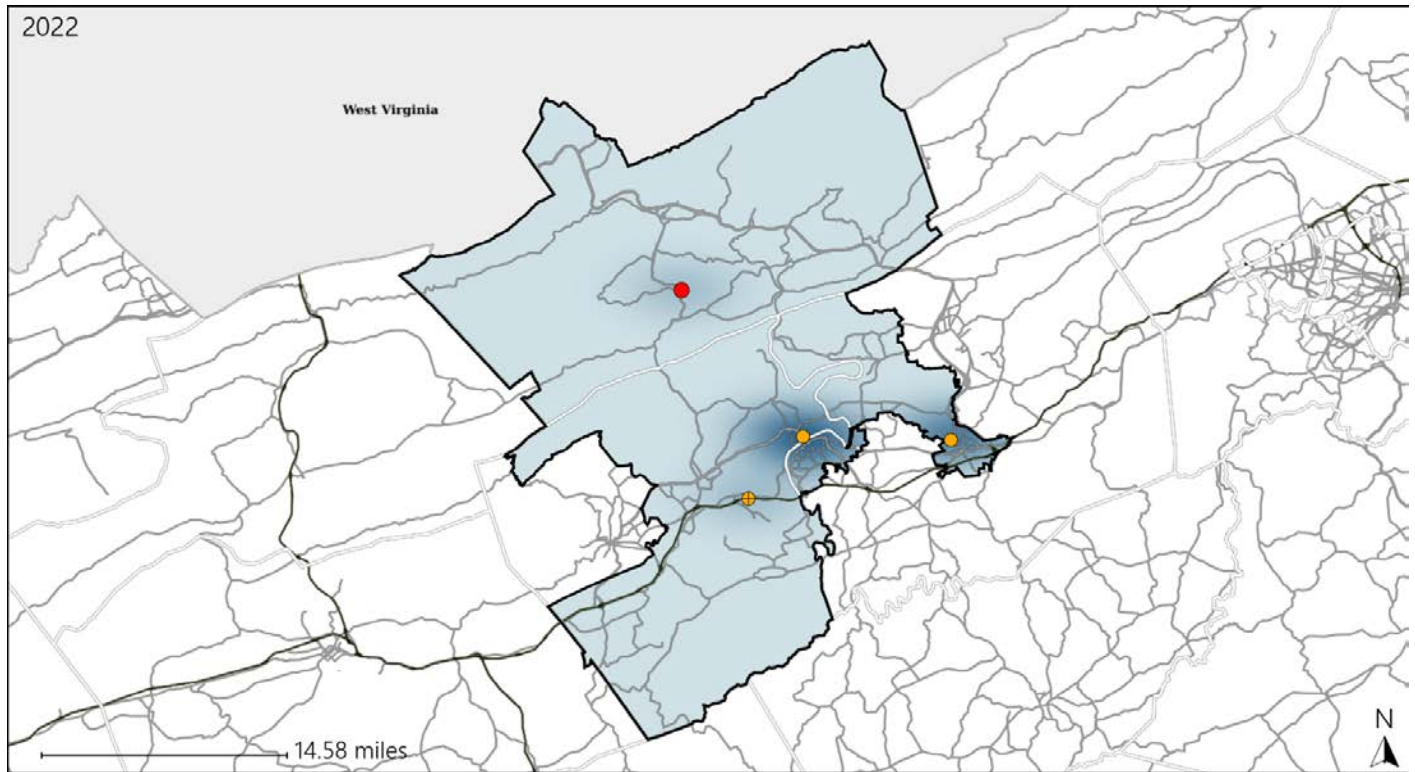


Available Crash Data - Calendar Year (CY)	CY 2019	CY 2020	CY 2021	CY 2022
Total Crashes	1368	1067	1255	1354
Fatalities	12	12	9	15
Injuries	611	500	531	634
Unrestrained Fatalities	4	5	5	5
Percent of Unrestrained Fatalities to Total Fatalities	33%	42%	56%	33%
Unrestrained Injuries	45	40	39	64
Percent of Unrestrained Injuries to Total Injuries	7%	8%	7%	10%

Virginia House District 42 Pedestrian Crash Statistics

Report Generated May, 2023

	Count	Highest Time Period(s)	Highest Day(s)	Highest Month(s)
Fatal Crashes	1	Noon - 2:59pm	Monday	September
Pedestrian Fatalities	1	(100%)	(100%)	(100%)
Serious Injury Crashes	3	3:00pm - 5:59pm 6:00pm - 8:59pm	Friday • Saturday	January • July
		(66%)	(66%)	(66%)



House District 42 Pedestrian-Related Crashes

- | | |
|--------------------|------------------------|
| Interstate Crashes | Non-interstate Crashes |
| ● Fatal | ● Fatal |
| ⊕ Serious Injury | ⊕ Serious Injury |

The blue gradient represents the density of all pedestrian-related crashes.

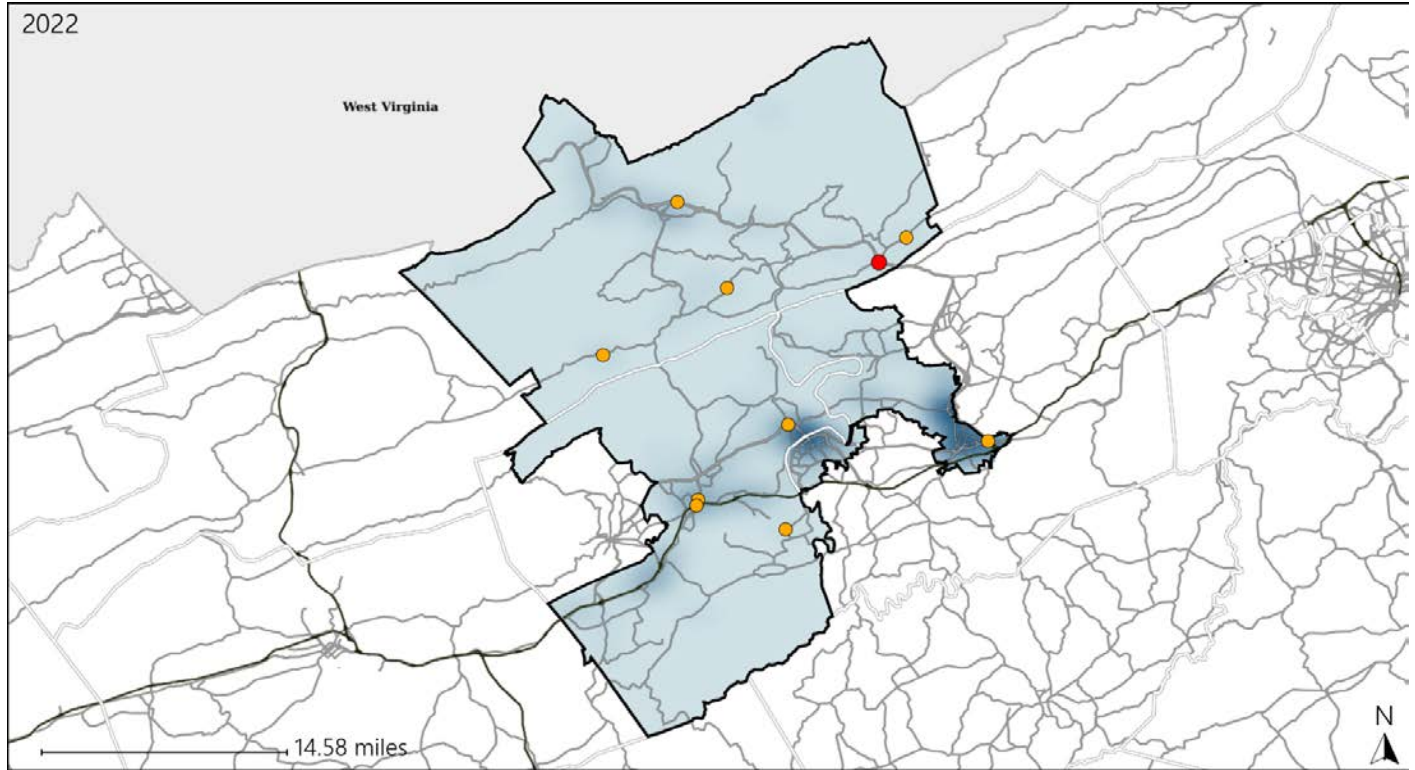


Available Crash Data - Calendar Year (CY)	CY 2019	CY 2020	CY 2021	CY 2022
Total Crashes	1368	1067	1255	1354
Fatal Crashes	12	11	9	14
Injury Crashes	437	350	393	439
Pedestrian-Related Fatal Crashes	3	0	0	1
Percent of Pedestrian-Related Fatal Crashes to Total Fatal Crashes	25%	0%	0%	7%
Pedestrian-Related Injury Crashes	11	9	12	8
Percent of Pedestrian-Related Injury Crashes to Total Injury Crashes	3%	3%	3%	2%

Virginia House District 42 Distracted Driving Crash Statistics

Report Generated May, 2023

	Count	Highest Time Period(s)	Highest Day(s)	Highest Month(s)
Fatal Crashes	1	6:00pm - 8:59pm	Thursday	March
Resulting Fatalities	1	(100%)	(100%)	(100%)
Serious Injury Crashes	9	6:00pm - 8:59pm	Friday • Monday	December
		(33%)	(44%)	(33%)



House District 42 Distracted Driving-Related Crashes

- | | |
|------------------------------------------------------|------------------------------------------------------|
| Interstate Crashes | Non-interstate Crashes |
| ● Fatal | ● Fatal |
| ● Serious Injury | ● Serious Injury |

The blue gradient represents the density of all distracted driving-related crashes.



Available Crash Data - Calendar Year (CY)	CY 2019	CY 2020	CY 2021	CY 2022
Total Crashes	1368	1067	1255	1354
Fatal Crashes	12	11	9	14
Injury Crashes	437	350	393	439
Distracted Driving-Related Fatal Crashes	1	1	2	1
Percent of Distracted Driving-Related Fatal Crashes to Total Fatal Crashes	8%	9%	22%	7%
Distracted Driving-Related Injury Crashes	75	72	65	83
Percent of Distracted Driving-Related Injury Crashes to Total Injury Crashes	17%	21%	17%	19%