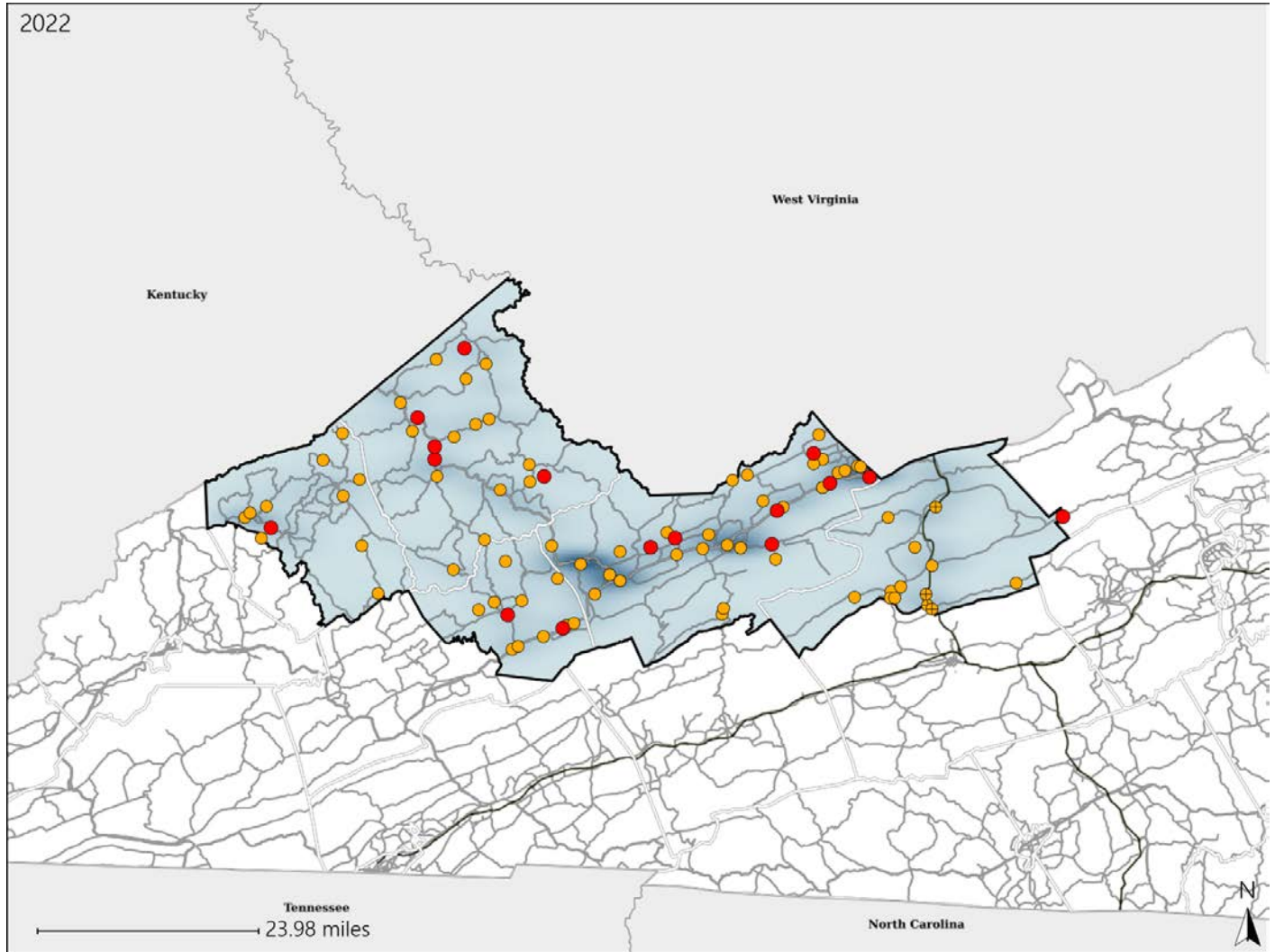


# Virginia House District 43 Crash Statistics

Report Generated May, 2023

	Count	Highest Time Period(s)	Highest Day(s)	Highest Month(s)
<b>Fatal Crashes</b>	<b>16</b>	3:00am - 5:59am	Sunday	February • June
<b>Resulting Fatalities</b>	<b>16</b>	3:00pm - 5:59pm (38%)	(31%)	(38%)
<b>Serious Injury Crashes</b>	<b>76</b>	3:00pm - 5:59pm (24%)	Tuesday (18%)	September (13%)



### House District 43 Crashes

Interstate Crashes

- Fatal
- Serious Injury

Non-interstate Crashes

- Fatal
- Serious Injury

The blue gradient represents the density of all crashes.

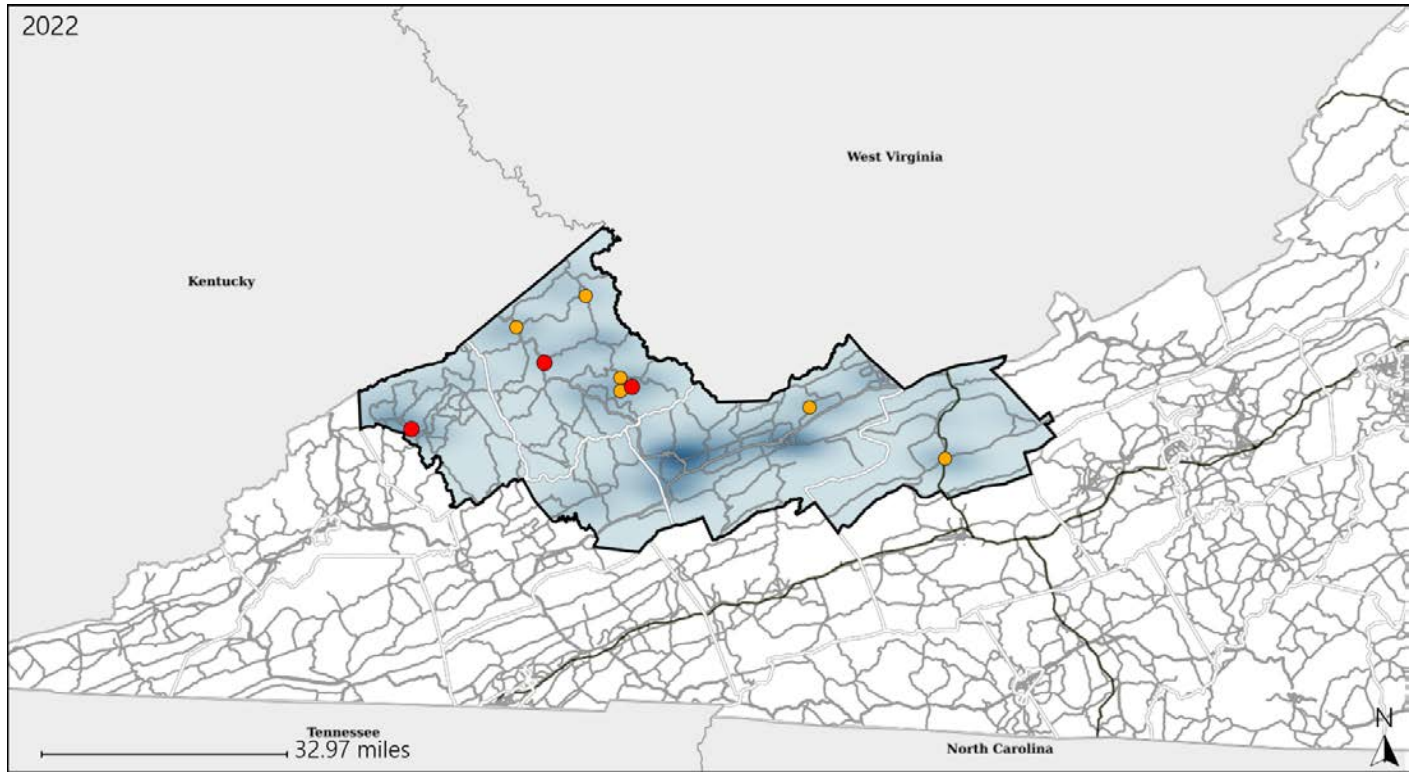


Available Crash Data - Calendar Year (CY)	CY 2019	CY 2020	CY 2021	CY 2022
Total Crashes	1308	1156	1262	1397
Fatal Crashes	13	19	14	16
Injury Crashes	475	392	441	411

# Virginia House District 43 Alcohol Crash Statistics

Report Generated May, 2023

	Count	Highest Time Period(s)	Highest Day(s)	Highest Month(s)
<b>Fatal Crashes</b>	<b>3</b>	<b>3:00am - 5:59am</b>	<b>Sunday</b>	<b>August • June</b>
<b>Resulting Fatalities</b>	<b>3</b>	(67%)	(67%)	(66%)
<b>Serious Injury Crashes</b>	<b>6</b>	<b>9:00pm - 11:59pm</b>	<b>Sunday • Thursday</b>	<b>March</b>
		(50%)	(66%)	(33%)



## House District 43 Alcohol-Related Crashes

Interstate Crashes

Non-interstate Crashes

● Fatal

● Fatal

● Serious Injury

● Serious Injury

The blue gradient represents the density of all alcohol-related crashes.

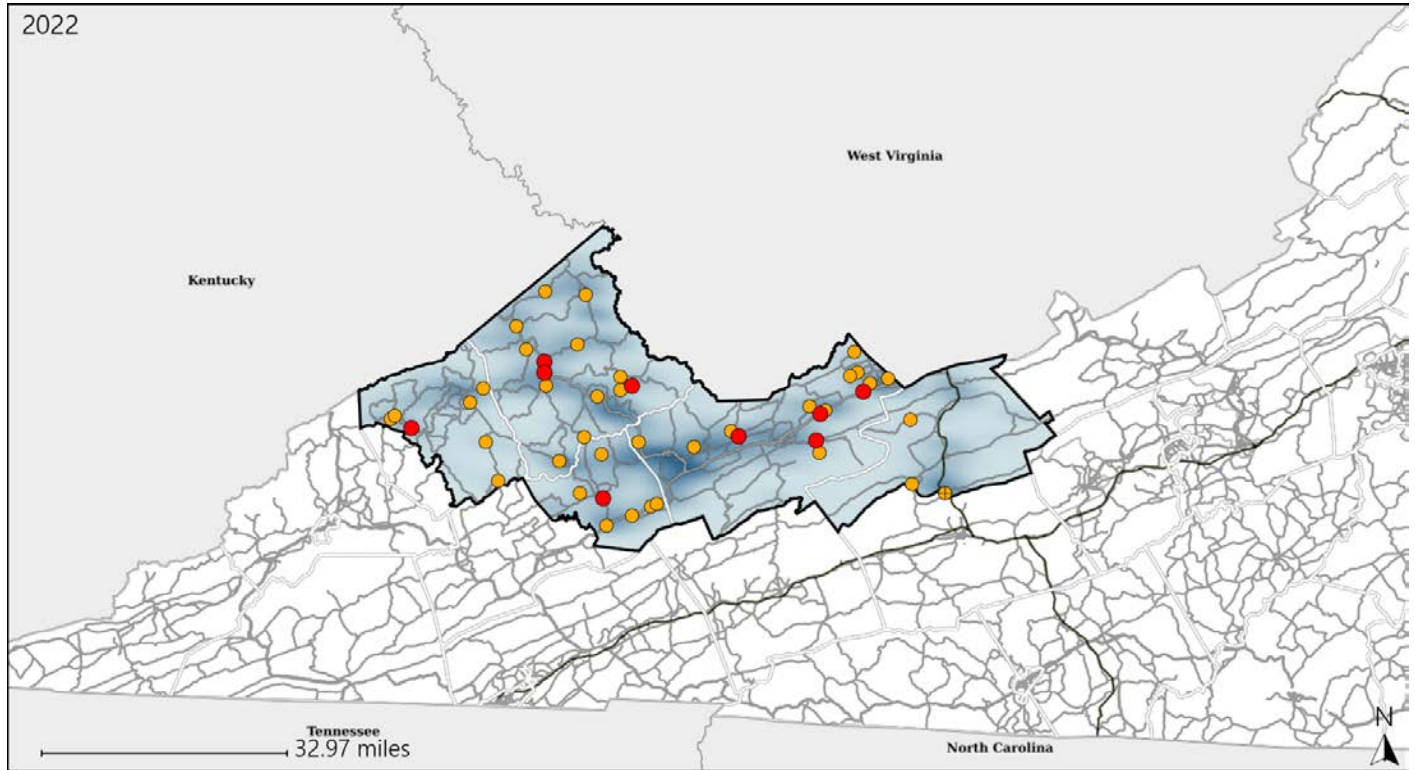


Available Crash Data - Calendar Year (CY)	CY 2019	CY 2020	CY 2021	CY 2022
Total Crashes	1308	1156	1262	1397
Fatal Crashes	13	19	14	16
Injury Crashes	475	392	441	411
Alcohol-Related Fatal Crashes	2	6	2	3
Percent of Alcohol-Related Fatal Crashes to Total Fatal Crashes	15%	32%	14%	19%
Alcohol-Related Injury Crashes	28	26	28	30
Percent of Alcohol-Related Injury Crashes to Total Injury Crashes	6%	7%	6%	7%

# Virginia House District 43 Speed Crash Statistics

Report Generated May, 2023

	Count	Highest Time Period(s)	Highest Day(s)	Highest Month(s)
<b>Fatal Crashes</b>	<b>9</b>	<b>6:00am - 8:59am</b>	<b>Sunday</b>	<b>August</b>
<b>Resulting Fatalities</b>	<b>9</b>	<b>6:00pm - 8:59pm</b> (66%)	<b>(33%)</b>	<b>(22%)</b>
<b>Serious Injury Crashes</b>	<b>37</b>	<b>3:00pm - 5:59pm</b> (24%)	<b>Sunday</b> (24%)	<b>August • September</b> (38%)



## House District 43 Speed-Related Crashes

Interstate Crashes                      Non-interstate Crashes  
 ● Fatal                                      ● Fatal  
 ⊕ Serious Injury                          ⊕ Serious Injury

The blue gradient represents the density of all speed-related crashes.

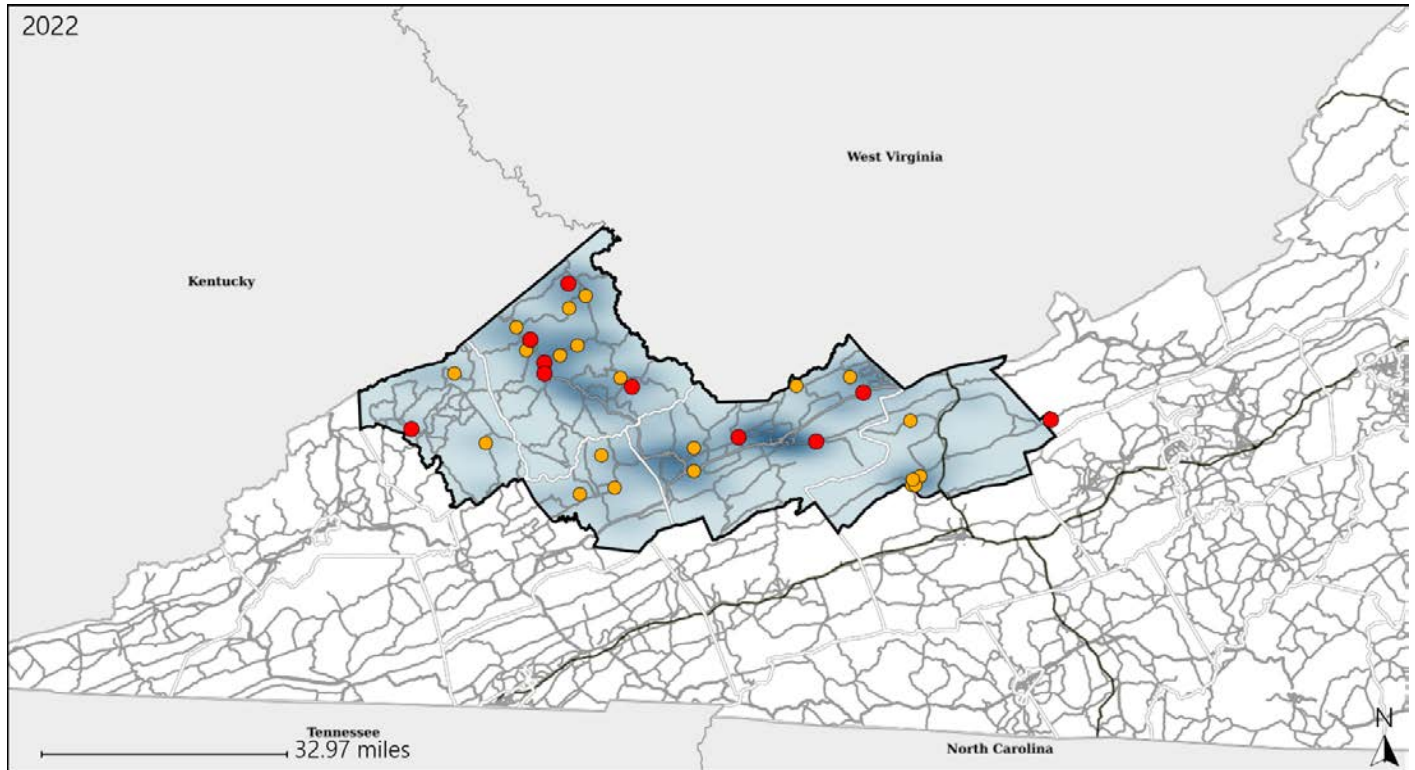


Available Crash Data - Calendar Year (CY)	CY 2019	CY 2020	CY 2021	CY 2022
Total Crashes	1308	1156	1262	1397
Fatal Crashes	13	19	14	16
Injury Crashes	475	392	441	411
Speed-Related Fatal Crashes	4	7	6	9
Percent of Speed-Related Fatal Crashes to Total Fatal Crashes	31%	37%	43%	56%
Speed-Related Injury Crashes	178	154	150	154
Percent of Speed-Related Injury Crashes to Total Injury Crashes	37%	39%	34%	37%

# Virginia House District 43 Unrestrained Crash Statistics

Report Generated May, 2023

	Count	Highest Time Period(s)	Highest Day(s)	Highest Month(s)
<b>Fatal Crashes</b>	<b>10</b>	<b>3:00am - 5:59am</b>	<b>Sunday</b>	<b>August • February</b>
<b>Unrestrained Fatalities</b>	<b>10</b>	(30%)	(40%)	(40%)
<b>Serious Injury Crashes</b>	<b>21</b>	<b>3:00pm - 5:59pm</b>	<b>Thursday</b>	<b>August • March</b>
		(33%)	(24%)	(38%)



## House District 43 Unrestrained-Related Crashes

Interstate Crashes

Non-interstate Crashes

- Fatal
- Serious Injury

- Fatal
- Serious Injury

The blue gradient represents the density of all unrestrained-related crashes.

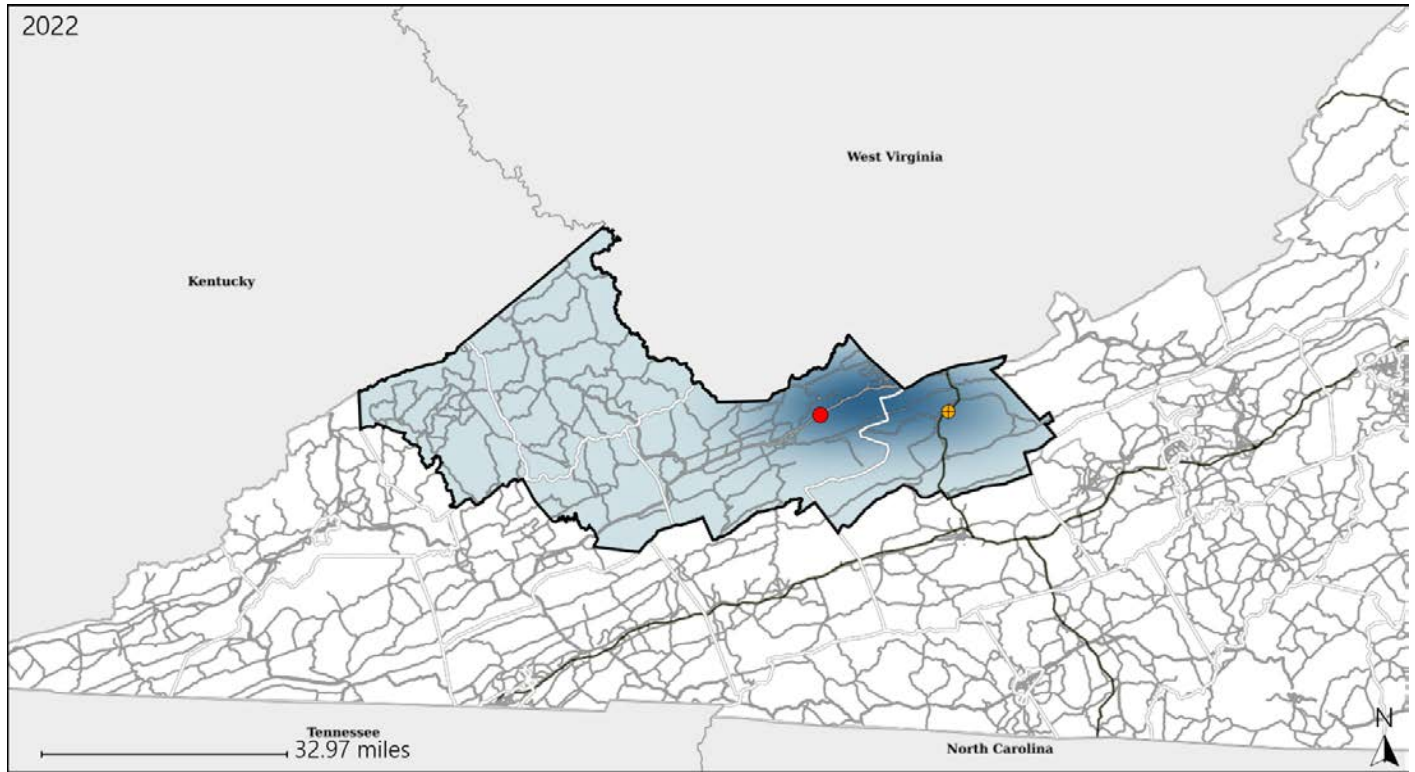


Available Crash Data - Calendar Year (CY)	CY 2019	CY 2020	CY 2021	CY 2022
<b>Total Crashes</b>	<b>1308</b>	<b>1156</b>	<b>1262</b>	<b>1397</b>
<b>Fatalities</b>	<b>13</b>	<b>20</b>	<b>14</b>	<b>16</b>
<b>Injuries</b>	<b>746</b>	<b>564</b>	<b>624</b>	<b>590</b>
<b>Unrestrained Fatalities</b>	<b>6</b>	<b>12</b>	<b>7</b>	<b>10</b>
<b>Percent of Unrestrained Fatalities to Total Fatalities</b>	<b>46%</b>	<b>60%</b>	<b>50%</b>	<b>63%</b>
<b>Unrestrained Injuries</b>	<b>91</b>	<b>64</b>	<b>80</b>	<b>97</b>
<b>Percent of Unrestrained Injuries to Total Injuries</b>	<b>12%</b>	<b>11%</b>	<b>13%</b>	<b>16%</b>

# Virginia House District 43 Pedestrian Crash Statistics

Report Generated May, 2023

	Count	Highest Time Period(s)	Highest Day(s)	Highest Month(s)
<b>Fatal Crashes</b>	<b>1</b>	<b>6:00am - 8:59am</b>	<b>Thursday</b>	<b>November</b>
<b>Pedestrian Fatalities</b>	<b>1</b>	<b>(100%)</b>	<b>(100%)</b>	<b>(100%)</b>
<b>Serious Injury Crashes</b>	<b>1</b>	<b>9:00am - 11:59am</b>	<b>Friday</b>	<b>February</b>
		<b>(100%)</b>	<b>(100%)</b>	<b>(100%)</b>



## House District 43 Pedestrian-Related Crashes

Interstate Crashes

Non-interstate Crashes

- Fatal
- Serious Injury

- Fatal
- Serious Injury

The blue gradient represents the density of all pedestrian-related crashes.

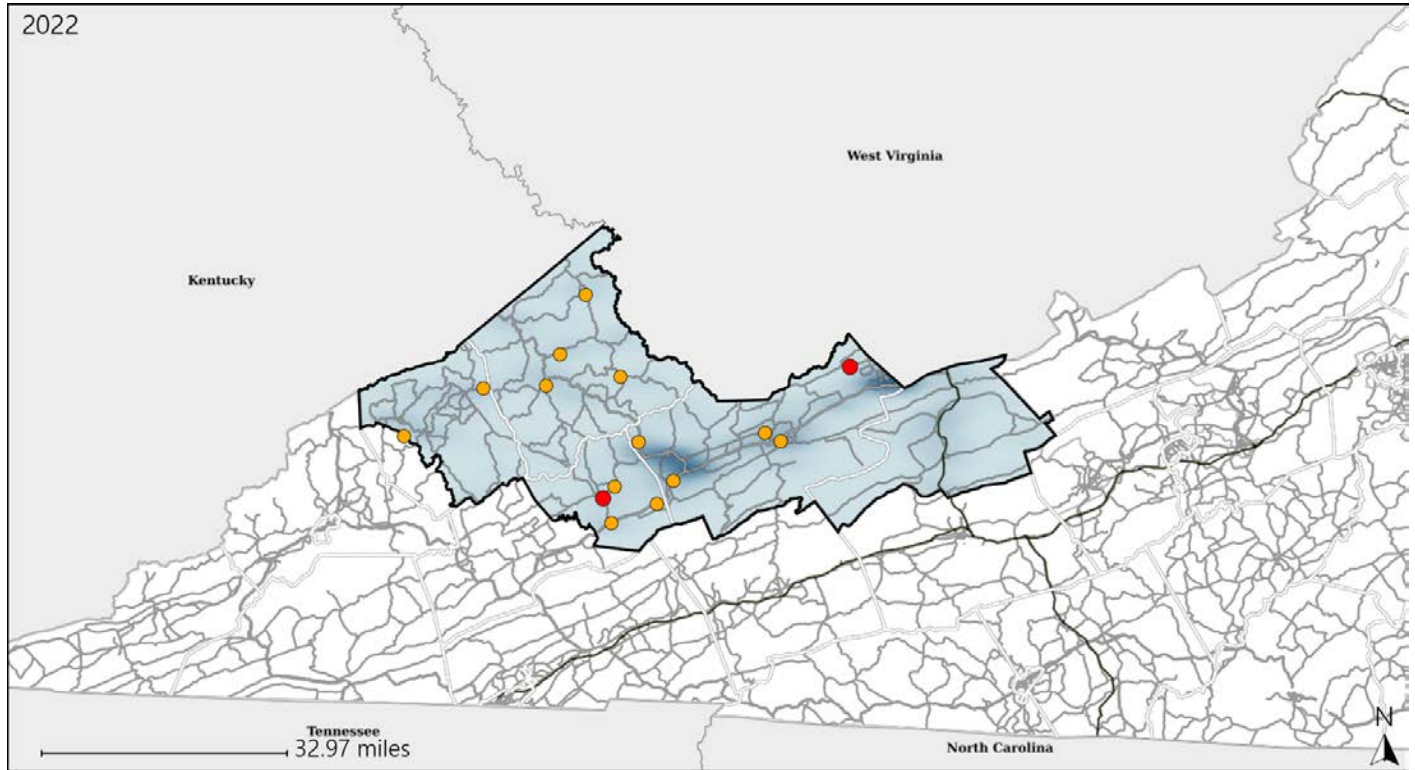


Available Crash Data - Calendar Year (CY)	CY 2019	CY 2020	CY 2021	CY 2022
Total Crashes	1308	1156	1262	1397
Fatal Crashes	13	19	14	16
Injury Crashes	475	392	441	411
Pedestrian-Related Fatal Crashes	0	1	2	1
Percent of Pedestrian-Related Fatal Crashes to Total Fatal Crashes	0%	5%	14%	6%
Pedestrian-Related Injury Crashes	5	4	4	2
Percent of Pedestrian-Related Injury Crashes to Total Injury Crashes	1%	1%	1%	0%

# Virginia House District 43 Distracted Driving Crash Statistics

Report Generated May, 2023

	Count	Highest Time Period(s)	Highest Day(s)	Highest Month(s)
<b>Fatal Crashes</b>	<b>2</b>	<b>6:00pm - 8:59pm</b>	<b>Saturday • Wednesday</b>	<b>January • October</b>
<b>Resulting Fatalities</b>	<b>2</b>	<b>Noon - 2:59pm</b> (100%)	<b>(100%)</b>	<b>(100%)</b>
<b>Serious Injury Crashes</b>	<b>13</b>	<b>6:00pm - 8:59pm</b> (31%)	<b>Tuesday</b> (31%)	<b>April</b> (23%)



## House District 43 Distracted Driving-Related Crashes

- |  |  |
|--|--|
| Interstate Crashes                                   | Non-interstate Crashes                               |
| <span style="color: red;">●</span> Fatal             | <span style="color: red;">●</span> Fatal             |
| <span style="color: orange;">●</span> Serious Injury | <span style="color: orange;">●</span> Serious Injury |

The blue gradient represents the density of all distracted driving-related crashes.



Available Crash Data - Calendar Year (CY)	CY 2019	CY 2020	CY 2021	CY 2022
Total Crashes	1308	1156	1262	1397
Fatal Crashes	13	19	14	16
Injury Crashes	475	392	441	411
Distracted Driving-Related Fatal Crashes	4	2	3	2
Percent of Distracted Driving-Related Fatal Crashes to Total Fatal Crashes	31%	11%	21%	13%
Distracted Driving-Related Injury Crashes	108	70	97	98
Percent of Distracted Driving-Related Injury Crashes to Total Injury Crashes	23%	18%	22%	24%