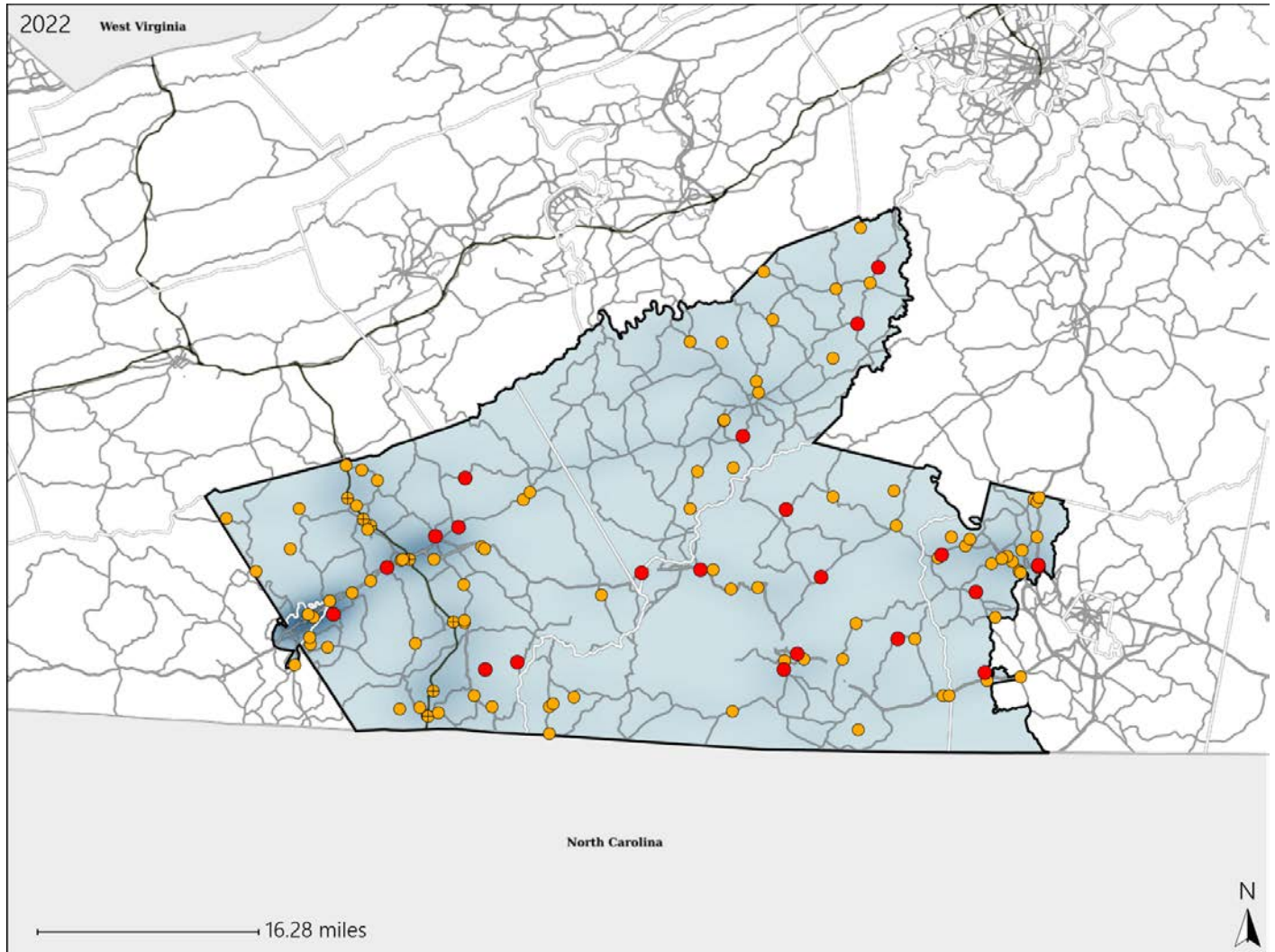


Virginia House District 47 Crash Statistics

Report Generated May, 2023

	Count	Highest Time Period(s)	Highest Day(s)	Highest Month(s)
Fatal Crashes	22	6:00pm - 8:59pm	Thursday	April • January
Resulting Fatalities	22	(23%)	(27%)	(28%)
Serious Injury Crashes	95	3:00pm - 5:59pm	Thursday	April
		(24%)	(18%)	(13%)



House District 47 Crashes

Interstate Crashes

- Fatal
- Serious Injury

Non-interstate Crashes

- Fatal
- Serious Injury

The blue gradient represents the density of all crashes.

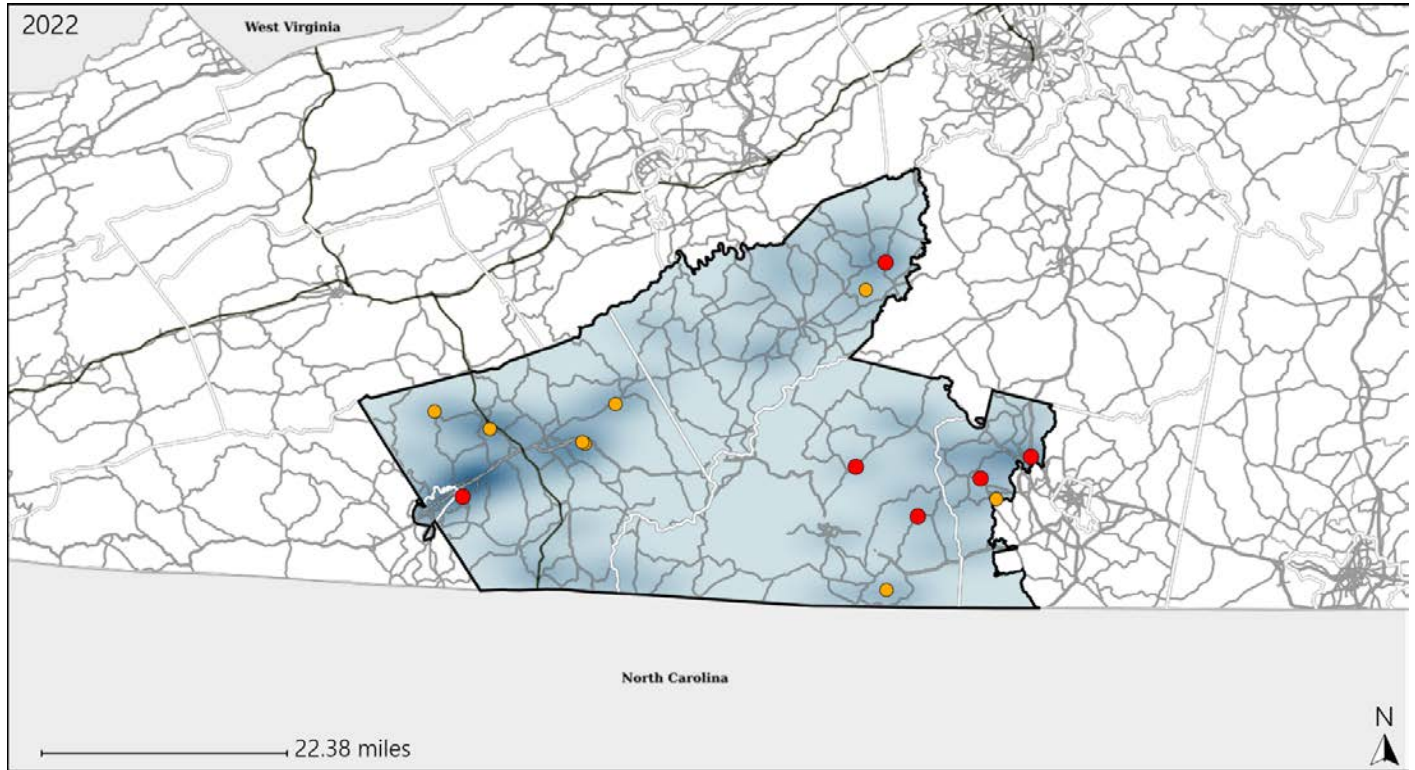


Available Crash Data - Calendar Year (CY)	CY 2019	CY 2020	CY 2021	CY 2022
Total Crashes	1212	1055	1239	1320
Fatal Crashes	8	14	10	22
Injury Crashes	360	275	313	323

Virginia House District 47 Alcohol Crash Statistics

Report Generated May, 2023

	Count	Highest Time Period(s)	Highest Day(s)	Highest Month(s)
Fatal Crashes	6	6:00pm - 8:59pm	Thursday	January
Resulting Fatalities	6	9:00pm - 11:59pm (66%)	(50%)	(33%)
Serious Injury Crashes	8	6:00pm - 8:59pm (62%)	Tuesday (38%)	April + March (50%)



House District 47 Alcohol-Related Crashes

Interstate Crashes

Non-interstate Crashes

- Fatal
- Serious Injury

- Fatal
- Serious Injury

The blue gradient represents the density of all alcohol-related crashes.

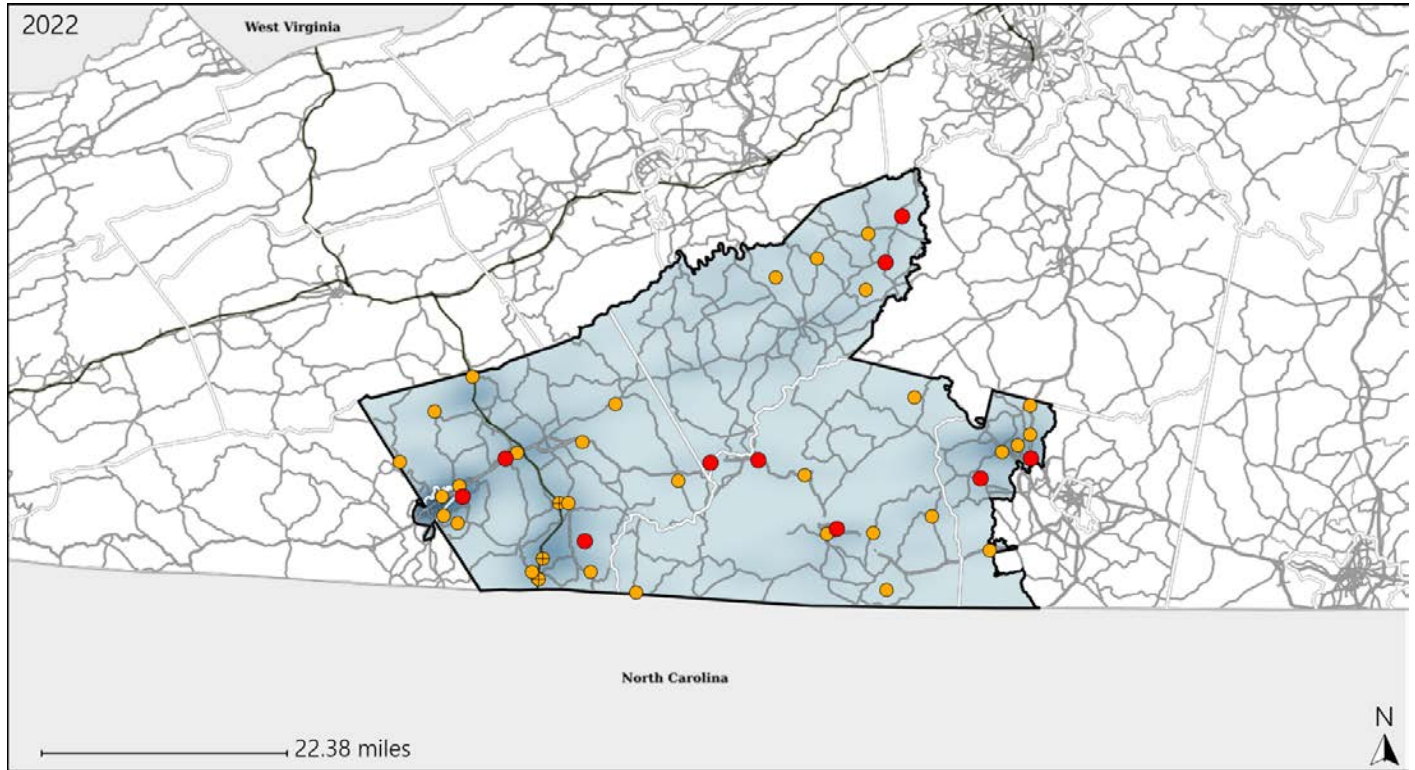


Available Crash Data - Calendar Year (CY)	CY 2019	CY 2020	CY 2021	CY 2022
Total Crashes	1212	1055	1239	1320
Fatal Crashes	8	14	10	22
Injury Crashes	360	275	313	323
Alcohol-Related Fatal Crashes	4	7	4	6
Percent of Alcohol-Related Fatal Crashes to Total Fatal Crashes	50%	50%	40%	27%
Alcohol-Related Injury Crashes	24	21	27	20
Percent of Alcohol-Related Injury Crashes to Total Injury Crashes	7%	8%	9%	6%

Virginia House District 47 Speed Crash Statistics

Report Generated May, 2023

	Count	Highest Time Period(s)	Highest Day(s)	Highest Month(s)
Fatal Crashes	10	6:00pm - 8:59pm	Friday • Thursday	April • January
Resulting Fatalities	10	Midnight - 2:59am (40%)	(40%)	(40%)
Serious Injury Crashes	34	3:00pm - 5:59pm (26%)	Tuesday (24%)	March (18%)



House District 47 Speed-Related Crashes

Interstate Crashes

Non-interstate Crashes

- Fatal
- Serious Injury

- Fatal
- Serious Injury

The blue gradient represents the density of all speed-related crashes.

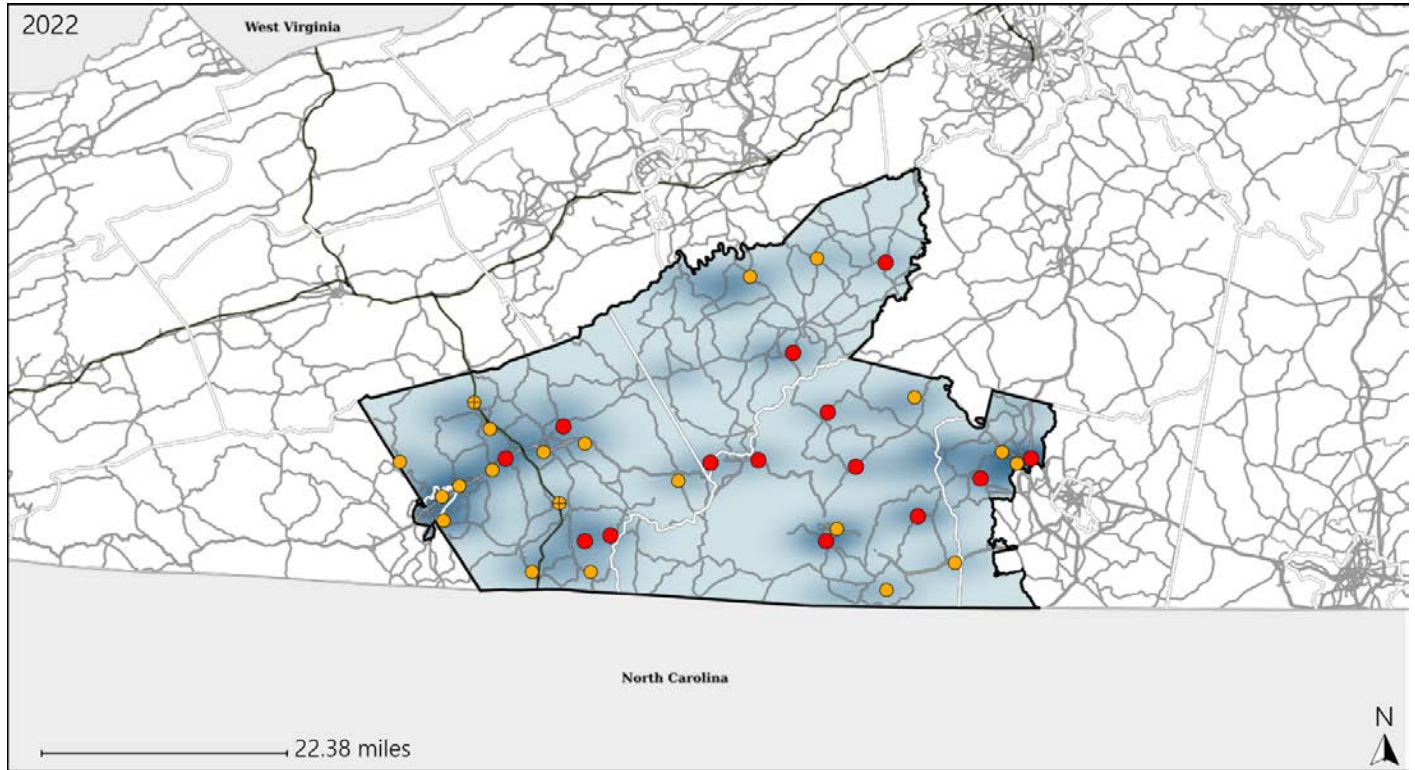


Available Crash Data - Calendar Year (CY)	CY 2019	CY 2020	CY 2021	CY 2022
Total Crashes	1212	1055	1239	1320
Fatal Crashes	8	14	10	22
Injury Crashes	360	275	313	323
Speed-Related Fatal Crashes	4	7	5	10
Percent of Speed-Related Fatal Crashes to Total Fatal Crashes	50%	50%	50%	45%
Speed-Related Injury Crashes	112	96	88	97
Percent of Speed-Related Injury Crashes to Total Injury Crashes	31%	35%	28%	30%

Virginia House District 47 Unrestrained Crash Statistics

Report Generated May, 2023

	Count	Highest Time Period(s)	Highest Day(s)	Highest Month(s)
Fatal Crashes	14	6:00pm - 8:59pm	Thursday	April - August
Unrestrained Fatalities	14	9:00am - 11:59am (42%)	(36%)	(28%)
Serious Injury Crashes	21	3:00pm - 5:59pm (33%)	Sunday (24%)	April (19%)



House District 47 Unrestrained-Related Crashes

Interstate Crashes

Non-interstate Crashes

- Fatal
- Serious Injury

- Fatal
- Serious Injury

The blue gradient represents the density of all unrestrained-related crashes.

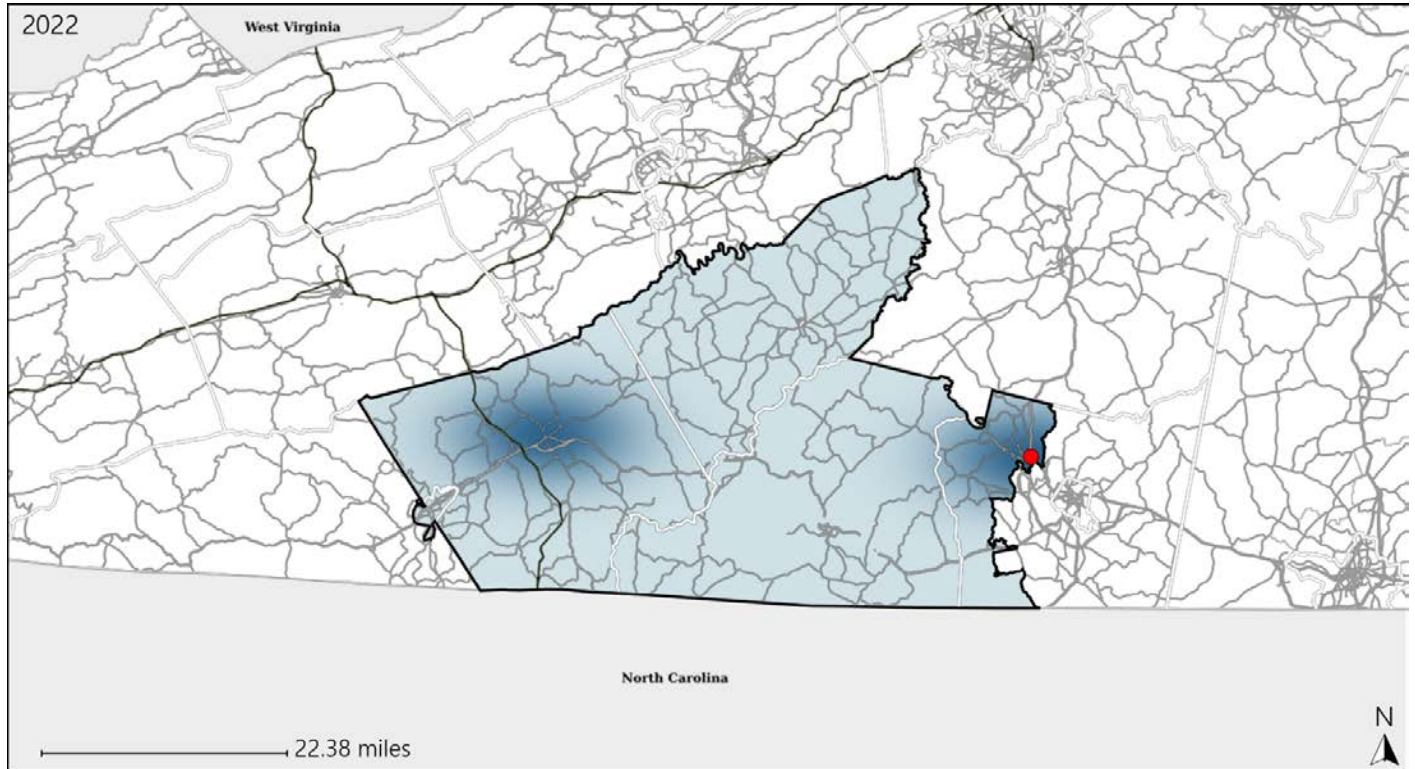


Available Crash Data - Calendar Year (CY)	CY 2019	CY 2020	CY 2021	CY 2022
Total Crashes	1212	1055	1239	1320
Fatalities	10	15	13	22
Injuries	534	367	422	462
Unrestrained Fatalities	4	9	4	14
Percent of Unrestrained Fatalities to Total Fatalities	40%	60%	31%	64%
Unrestrained Injuries	48	38	52	55
Percent of Unrestrained Injuries to Total Injuries	9%	10%	12%	12%

Virginia House District 47 Pedestrian Crash Statistics

Report Generated May, 2023

	Count	Highest Time Period(s)	Highest Day(s)	Highest Month(s)
Fatal Crashes	1	Midnight - 2:59am	Wednesday	January
Pedestrian Fatalities	1	(100%)	(100%)	(100%)
Serious Injury Crashes	0	-	-	-




House District 47 Pedestrian-Related Crashes


Interstate Crashes

Non-interstate Crashes

 Fatal

 Fatal

 Serious Injury

 Serious Injury

The blue gradient represents the density of all pedestrian-related crashes.

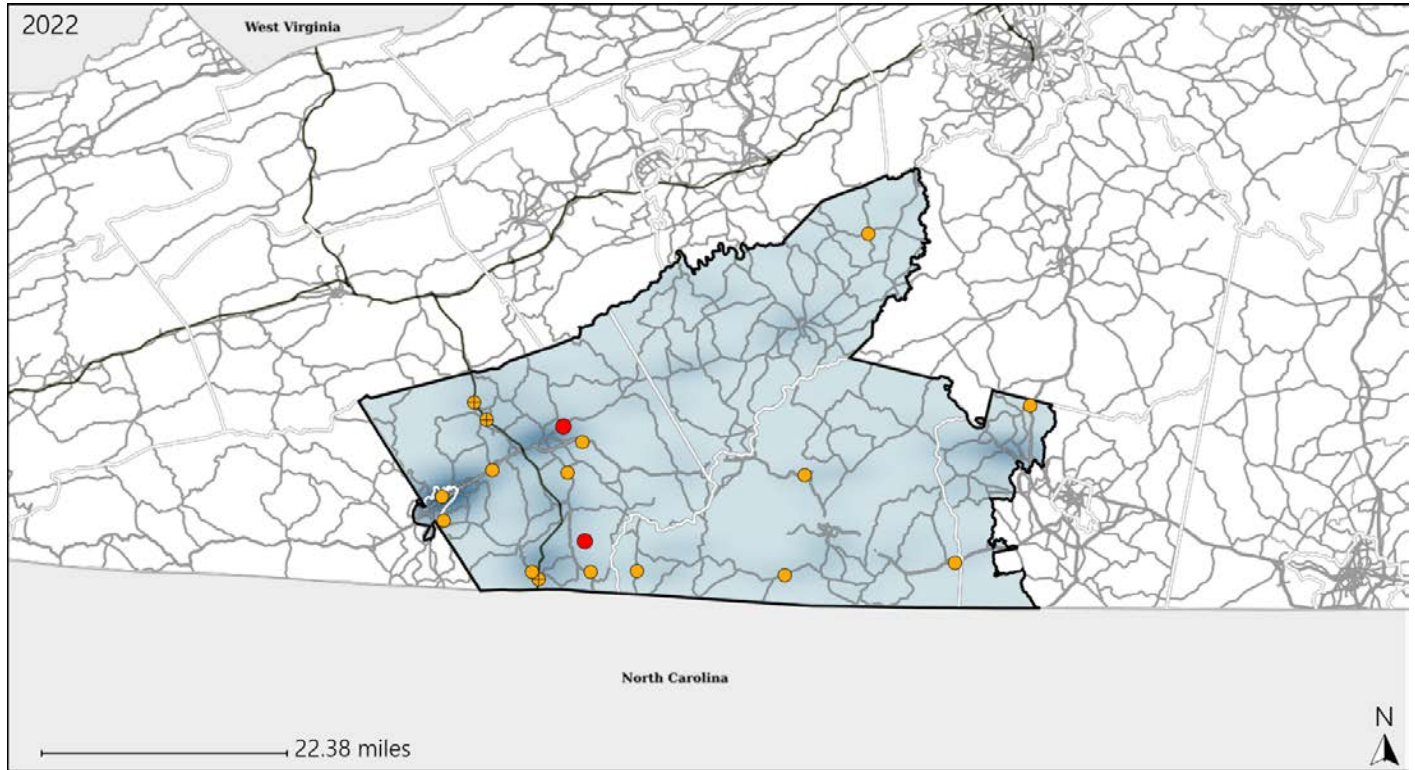


Available Crash Data - Calendar Year (CY)	CY 2019	CY 2020	CY 2021	CY 2022
Total Crashes	1212	1055	1239	1320
Fatal Crashes	8	14	10	22
Injury Crashes	360	275	313	323
Pedestrian-Related Fatal Crashes	0	0	0	1
Percent of Pedestrian-Related Fatal Crashes to Total Fatal Crashes	0%	0%	0%	5%
Pedestrian-Related Injury Crashes	5	4	2	1
Percent of Pedestrian-Related Injury Crashes to Total Injury Crashes	1%	1%	1%	0%

Virginia House District 47 Distracted Driving Crash Statistics

Report Generated May, 2023

	Count	Highest Time Period(s)	Highest Day(s)	Highest Month(s)
Fatal Crashes	2	3:00am - 5:59am	Monday • Sunday	August • May
Resulting Fatalities	2	6:00pm - 8:59pm (100%)	(100%)	(100%)
Serious Injury Crashes	16	6:00am - 8:59am (31%)	Thursday (31%)	July • October (38%)



House District 47 Distracted Driving-Related Crashes

- | | |
|--------------------|------------------------|
| Interstate Crashes | Non-interstate Crashes |
| ● Fatal | ● Fatal |
| ⊕ Serious Injury | ⊕ Serious Injury |

The blue gradient represents the density of all distracted driving-related crashes.



Available Crash Data - Calendar Year (CY)	CY 2019	CY 2020	CY 2021	CY 2022
Total Crashes	1212	1055	1239	1320
Fatal Crashes	8	14	10	22
Injury Crashes	360	275	313	323
Distracted Driving-Related Fatal Crashes	0	2	3	2
Percent of Distracted Driving-Related Fatal Crashes to Total Fatal Crashes	0%	14%	30%	9%
Distracted Driving-Related Injury Crashes	64	44	54	55
Percent of Distracted Driving-Related Injury Crashes to Total Injury Crashes	18%	16%	17%	17%