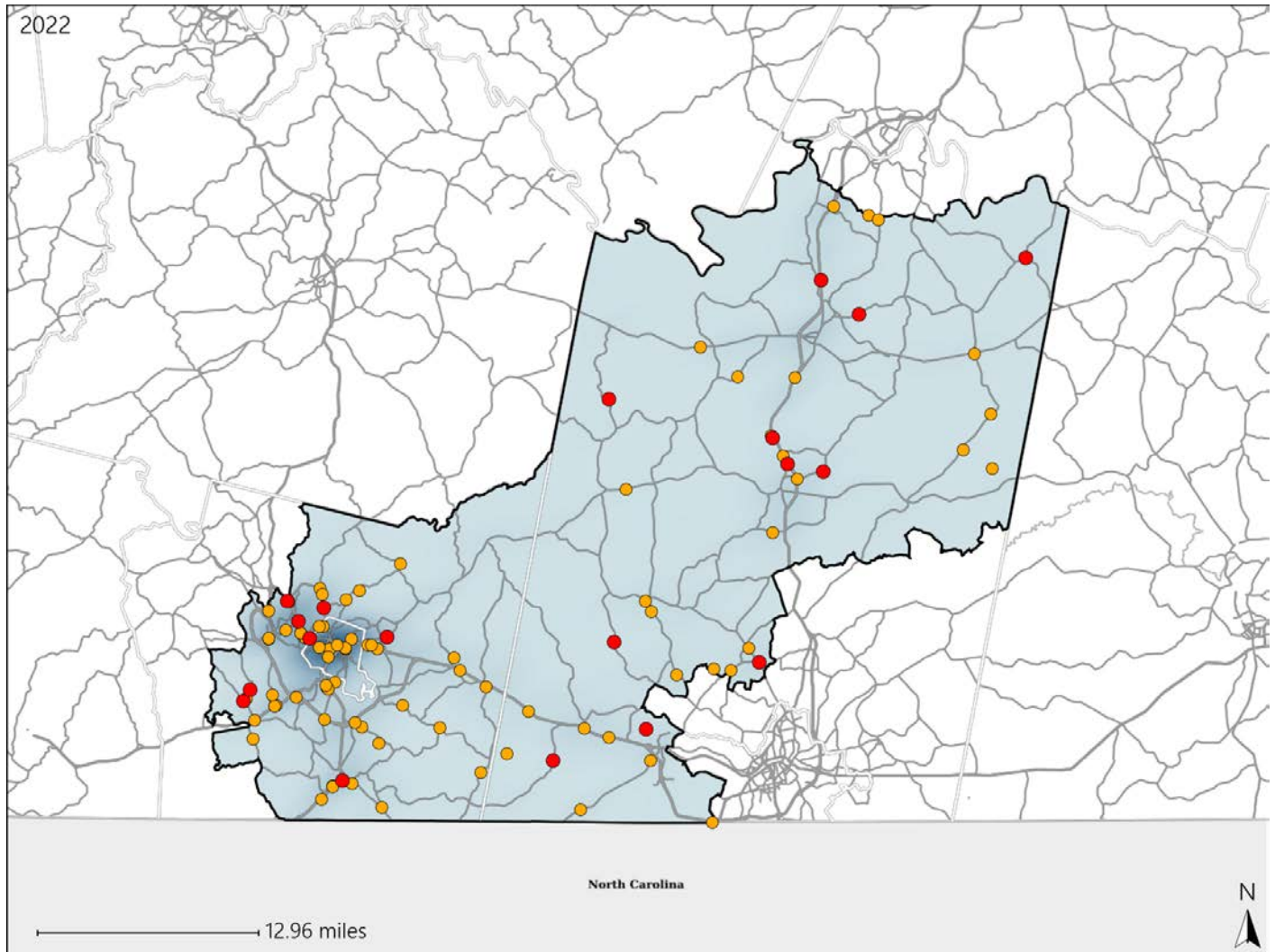


# Virginia House District 48 Crash Statistics

Report Generated May, 2023

	Count	Highest Time Period(s)	Highest Day(s)	Highest Month(s)
<b>Fatal Crashes</b>	<b>19</b>	<b>6:00pm - 8:59pm</b>	<b>Saturday • Wednesday</b>	<b>September</b>
<b>Resulting Fatalities</b>	<b>19</b>	(53%)	(42%)	(21%)
<b>Serious Injury Crashes</b>	<b>83</b>	<b>3:00pm - 5:59pm</b> <b>9:00pm - 11:59pm</b>	<b>Thursday</b>	<b>June</b>
		(36%)	(18%)	(14%)



### House District 48 Crashes

Interstate Crashes

- Fatal
- Serious Injury

Non-interstate Crashes

- Fatal
- Serious Injury

The blue gradient represents the density of all crashes.

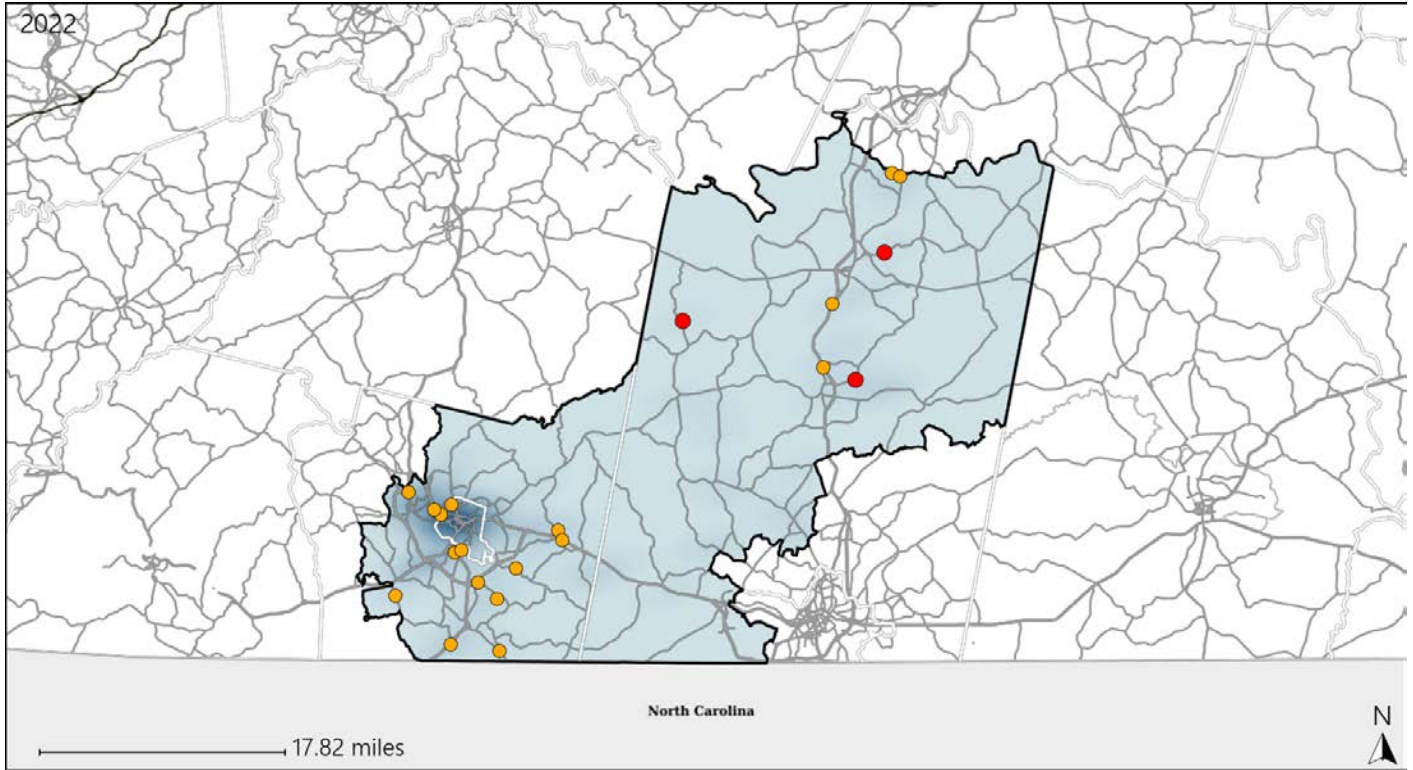


Available Crash Data - Calendar Year (CY)	CY 2019	CY 2020	CY 2021	CY 2022
Total Crashes	1174	1237	1225	1231
Fatal Crashes	19	24	14	19
Injury Crashes	343	380	344	362

# Virginia House District 48 Alcohol Crash Statistics

Report Generated May, 2023

	Count	Highest Time Period(s)	Highest Day(s)	Highest Month(s)
<b>Fatal Crashes</b>	<b>3</b>	<b>6:00pm - 8:59pm</b>	<b>Friday • Saturday</b>	<b>January • March</b>
<b>Resulting Fatalities</b>	<b>3</b>	(100%)	(66%)	(66%)
<b>Serious Injury Crashes</b>	<b>18</b>	<b>9:00pm - 11:59pm</b>	<b>Saturday</b>	<b>December • July</b>
		(44%)	(28%)	(34%)



## House District 48 Alcohol-Related Crashes

Interstate Crashes                      Non-interstate Crashes  
 ● Fatal                                      ● Fatal  
 ● Serious Injury                          ● Serious Injury

The blue gradient represents the density of all alcohol-related crashes.

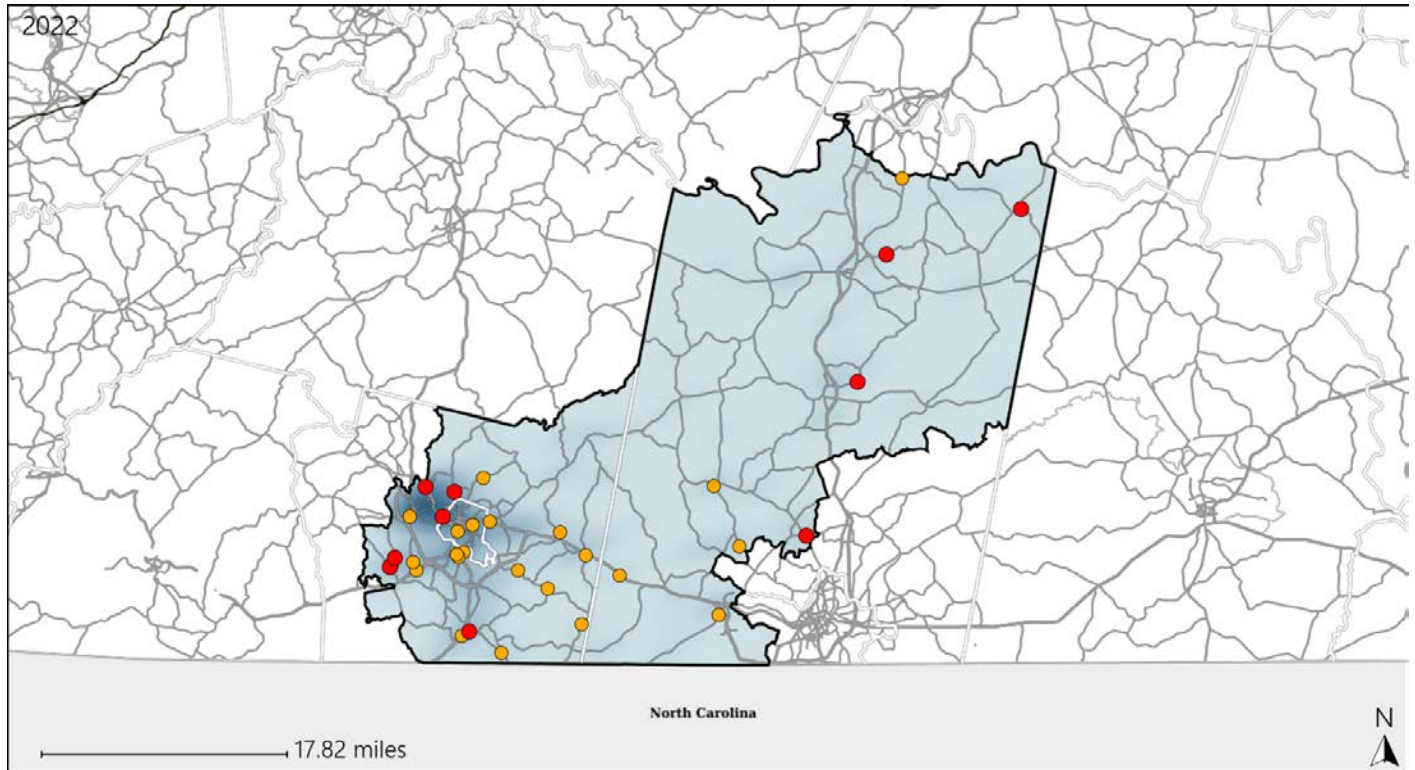


Available Crash Data - Calendar Year (CY)	CY 2019	CY 2020	CY 2021	CY 2022
<b>Total Crashes</b>	<b>1174</b>	<b>1237</b>	<b>1225</b>	<b>1231</b>
<b>Fatal Crashes</b>	<b>19</b>	<b>24</b>	<b>14</b>	<b>19</b>
<b>Injury Crashes</b>	<b>343</b>	<b>380</b>	<b>344</b>	<b>362</b>
<b>Alcohol-Related Fatal Crashes</b>	<b>4</b>	<b>8</b>	<b>6</b>	<b>3</b>
<b>Percent of Alcohol-Related Fatal Crashes to Total Fatal Crashes</b>	<b>21%</b>	<b>33%</b>	<b>43%</b>	<b>16%</b>
<b>Alcohol-Related Injury Crashes</b>	<b>28</b>	<b>39</b>	<b>18</b>	<b>37</b>
<b>Percent of Alcohol-Related Injury Crashes to Total Injury Crashes</b>	<b>8%</b>	<b>10%</b>	<b>5%</b>	<b>10%</b>

# Virginia House District 48 Speed Crash Statistics

Report Generated May, 2023

	Count	Highest Time Period(s)	Highest Day(s)	Highest Month(s)
<b>Fatal Crashes</b>	<b>10</b>	<b>6:00pm - 8:59pm</b>	<b>Saturday • Sunday</b>	<b>April • August</b>
<b>Resulting Fatalities</b>	<b>10</b>	(50%)	(40%)	(40%)
<b>Serious Injury Crashes</b>	<b>23</b>	<b>Noon - 2:59pm</b>	<b>Saturday</b>	<b>December</b>
		(17%)	(22%)	(17%)



## House District 48 Speed-Related Crashes

Interstate Crashes

Non-interstate Crashes

- Fatal
- Serious Injury

- Fatal
- Serious Injury

The blue gradient represents the density of all speed-related crashes.

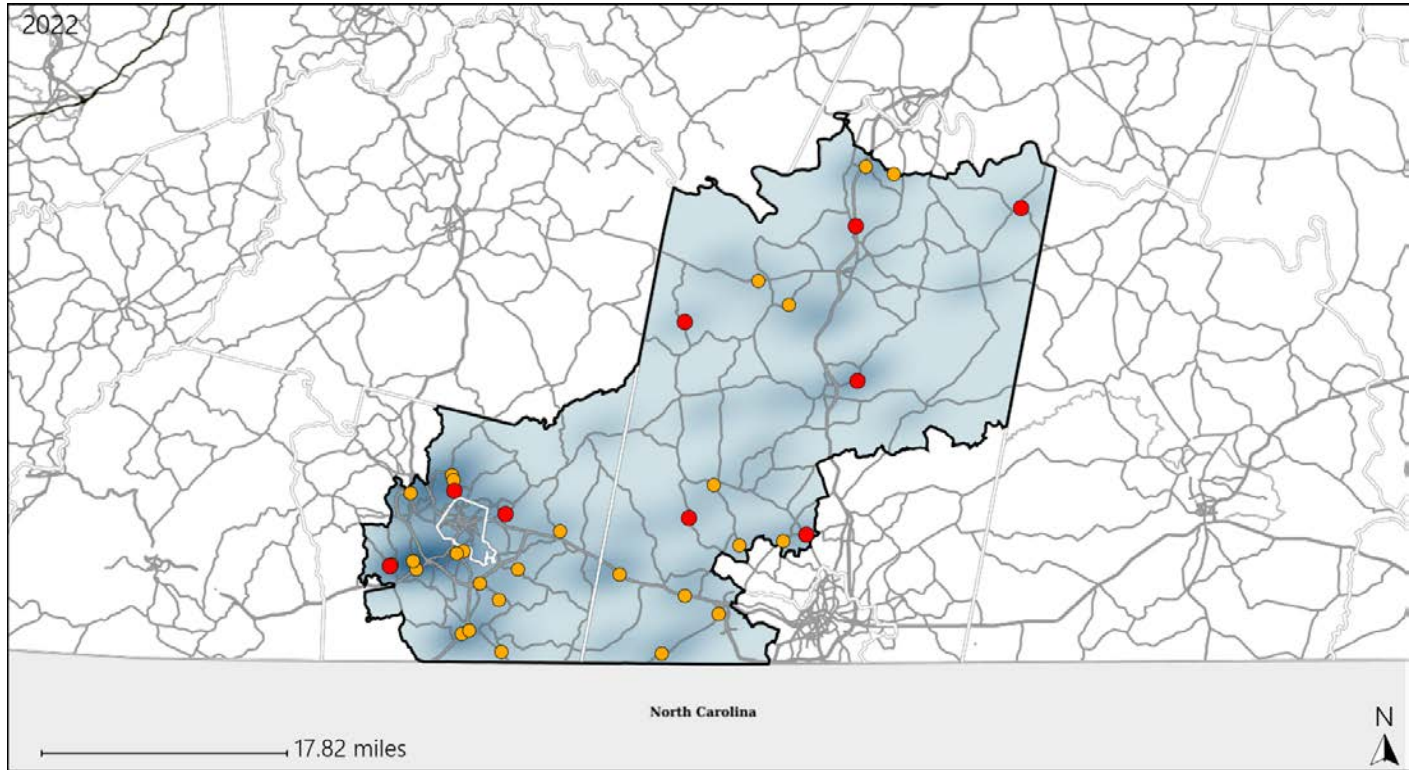


Available Crash Data - Calendar Year (CY)	CY 2019	CY 2020	CY 2021	CY 2022
Total Crashes	1174	1237	1225	1231
Fatal Crashes	19	24	14	19
Injury Crashes	343	380	344	362
Speed-Related Fatal Crashes	9	12	4	10
Percent of Speed-Related Fatal Crashes to Total Fatal Crashes	47%	50%	29%	53%
Speed-Related Injury Crashes	91	122	79	86
Percent of Speed-Related Injury Crashes to Total Injury Crashes	27%	32%	23%	24%

# Virginia House District 48 Unrestrained Crash Statistics

Report Generated May, 2023

	Count	Highest Time Period(s)	Highest Day(s)	Highest Month(s)
<b>Fatal Crashes</b>	<b>9</b>	<b>6:00am - 8:59am</b>	<b>Friday • Sunday</b>	<b>March</b>
<b>Unrestrained Fatalities</b>	<b>9</b>	<b>6:00pm - 8:59pm</b> (44%)	<b>(44%)</b>	<b>(22%)</b>
<b>Serious Injury Crashes</b>	<b>26</b>	<b>9:00pm - 11:59pm</b> (27%)	<b>Saturday</b> (27%)	<b>December • June</b> (30%)



## House District 48 Unrestrained-Related Crashes

Interstate Crashes

Non-interstate Crashes

- Fatal
- Serious Injury

- Fatal
- Serious Injury

The blue gradient represents the density of all unrestrained-related crashes.

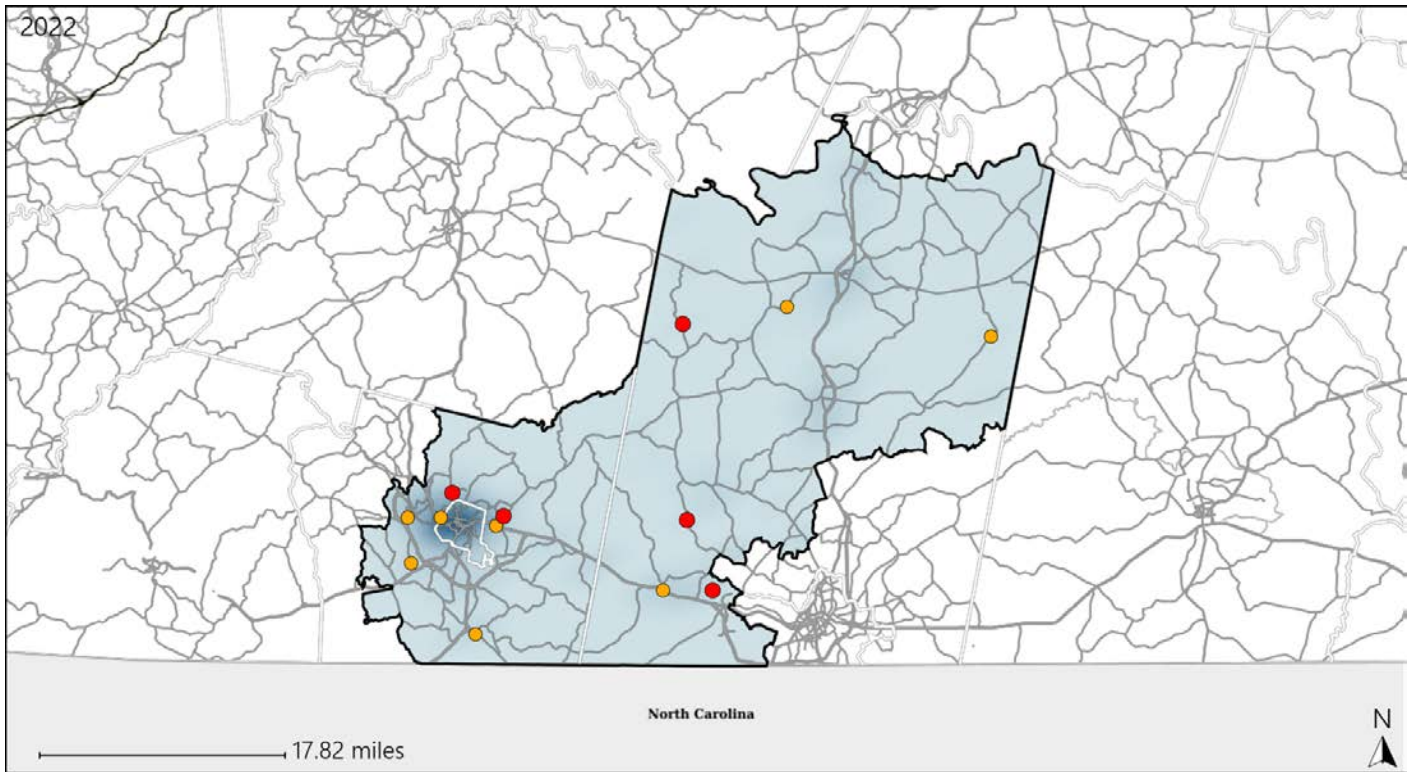


Available Crash Data - Calendar Year (CY)	CY 2019	CY 2020	CY 2021	CY 2022
Total Crashes	1174	1237	1225	1231
Fatalities	21	25	14	19
Injuries	501	557	486	495
Unrestrained Fatalities	6	9	7	9
Percent of Unrestrained Fatalities to Total Fatalities	29%	36%	50%	47%
Unrestrained Injuries	62	76	70	75
Percent of Unrestrained Injuries to Total Injuries	12%	14%	14%	15%

# Virginia House District 48 Distracted Driving Crash Statistics

Report Generated May, 2023

	Count	Highest Time Period(s)	Highest Day(s)	Highest Month(s)
<b>Fatal Crashes</b>	<b>5</b>	<b>6:00pm - 8:59pm</b>	<b>Monday</b>	<b>January • July</b>
<b>Resulting Fatalities</b>	<b>5</b>	<b>(40%)</b>	<b>(40%)</b>	<b>(40%)</b>
<b>Serious Injury Crashes</b>	<b>8</b>	<b>3:00pm - 5:59pm</b> <b>6:00pm - 8:59pm</b>	<b>Monday • Sunday</b>	<b>September</b>
		<b>(50%)</b>	<b>(50%)</b>	<b>(38%)</b>



## House District 48 Distracted Driving-Related Crashes

- |  |  |
|--|--|
| Interstate Crashes                                   | Non-interstate Crashes                               |
| <span style="color: red;">●</span> Fatal             | <span style="color: red;">●</span> Fatal             |
| <span style="color: orange;">●</span> Serious Injury | <span style="color: orange;">●</span> Serious Injury |

The blue gradient represents the density of all distracted driving-related crashes.



Available Crash Data - Calendar Year (CY)	CY 2019	CY 2020	CY 2021	CY 2022
Total Crashes	1174	1237	1225	1231
Fatal Crashes	19	24	14	19
Injury Crashes	343	380	344	362
Distracted Driving-Related Fatal Crashes	1	2	0	5
Percent of Distracted Driving-Related Fatal Crashes to Total Fatal Crashes	5%	8%	0%	26%
Distracted Driving-Related Injury Crashes	51	43	43	49
Percent of Distracted Driving-Related Injury Crashes to Total Injury Crashes	15%	11%	13%	14%