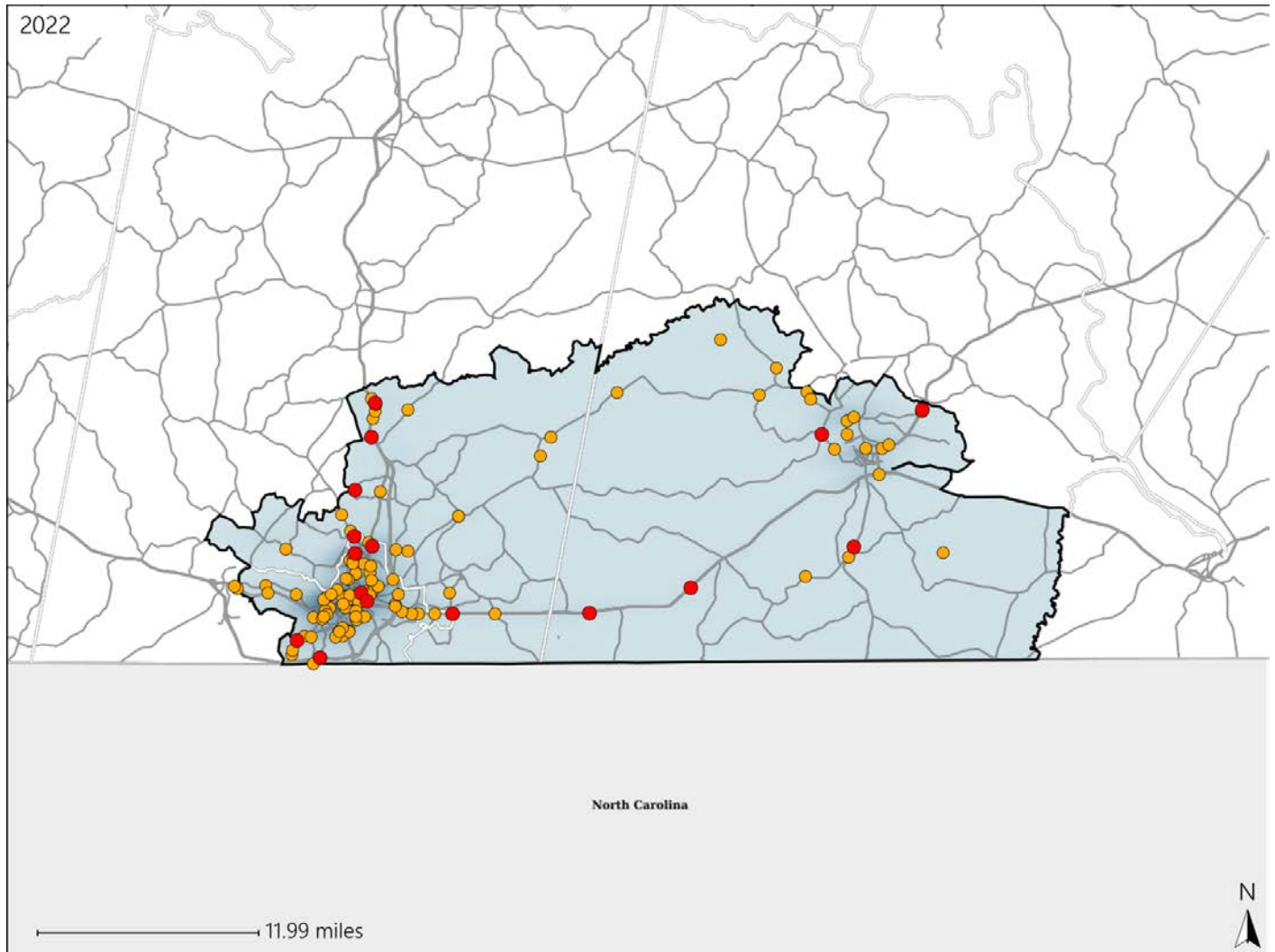


# Virginia House District 49 Crash Statistics

Report Generated May, 2023

	Count	Highest Time Period(s)	Highest Day(s)	Highest Month(s)
<b>Fatal Crashes</b>	<b>16</b>	<b>9:00pm - 11:59pm</b>	<b>Saturday</b>	<b>September</b>
<b>Resulting Fatalities</b>	<b>18</b>	(31%)	(25%)	(25%)
<b>Serious Injury Crashes</b>	<b>103</b>	<b>3:00pm - 5:59pm</b> <b>9:00pm - 11:59pm</b>	<b>Friday • Thursday</b>	<b>August • March</b>
		(34%)	(36%)	(26%)



## House District 49 Crashes

Interstate Crashes

- Fatal
- Serious Injury

Non-interstate Crashes

- Fatal
- Serious Injury

The blue gradient represents the density of all crashes.

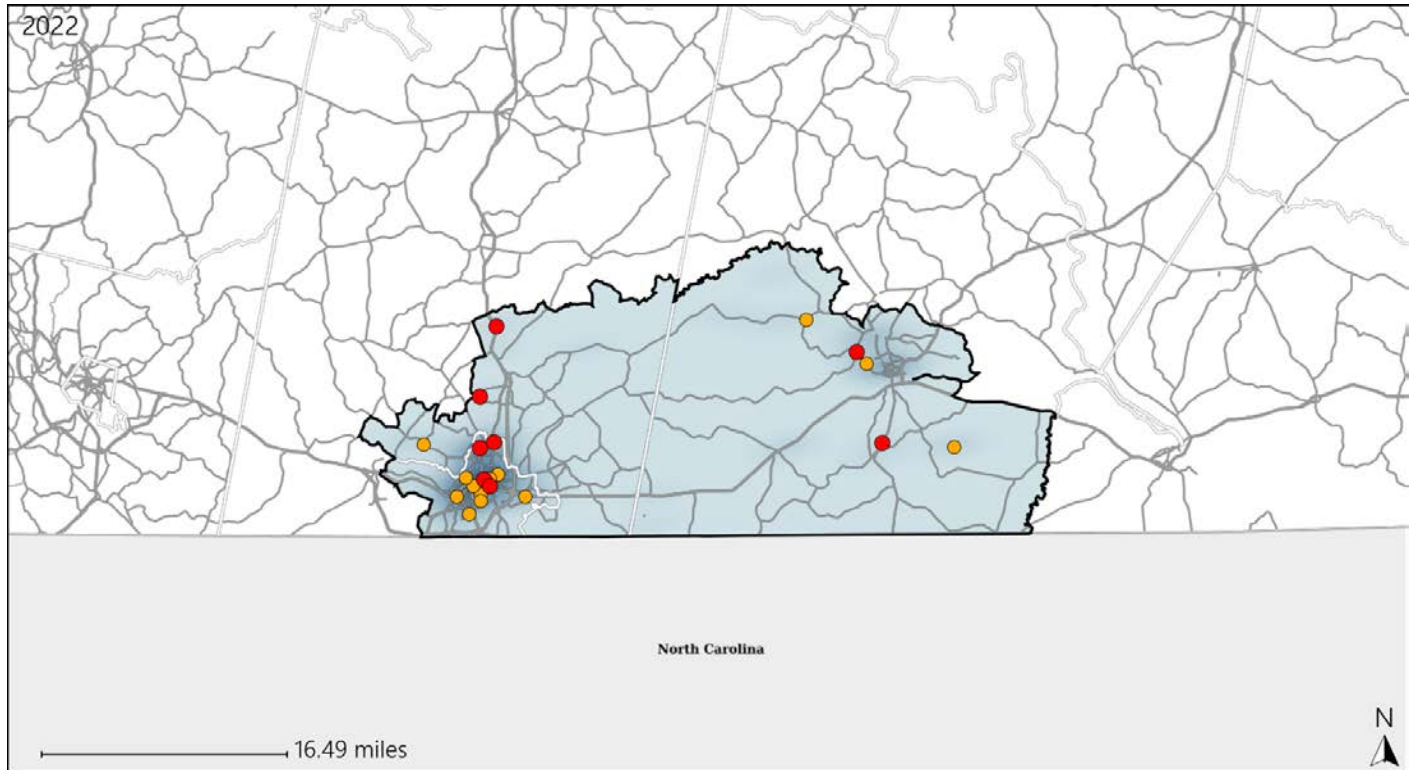


Available Crash Data - Calendar Year (CY)	CY 2019	CY 2020	CY 2021	CY 2022
Total Crashes	1442	1501	1652	1533
Fatal Crashes	10	12	16	16
Injury Crashes	573	505	552	557

# Virginia House District 49 Alcohol Crash Statistics

Report Generated May, 2023

	Count	Highest Time Period(s)	Highest Day(s)	Highest Month(s)
<b>Fatal Crashes</b>	<b>8</b>	<b>9:00pm - 11:59pm</b>	<b>Sunday</b>	<b>June • March</b>
<b>Resulting Fatalities</b>	<b>8</b>	(50%)	(38%)	(50%)
<b>Serious Injury Crashes</b>	<b>14</b>	<b>9:00pm - 11:59pm</b>	<b>Saturday • Tuesday</b>	<b>November</b>
		(43%)	(42%)	(21%)



## House District 49 Alcohol-Related Crashes

Interstate Crashes

Non-interstate Crashes

- Fatal
- Serious Injury

- Fatal
- Serious Injury

The blue gradient represents the density of all alcohol-related crashes.

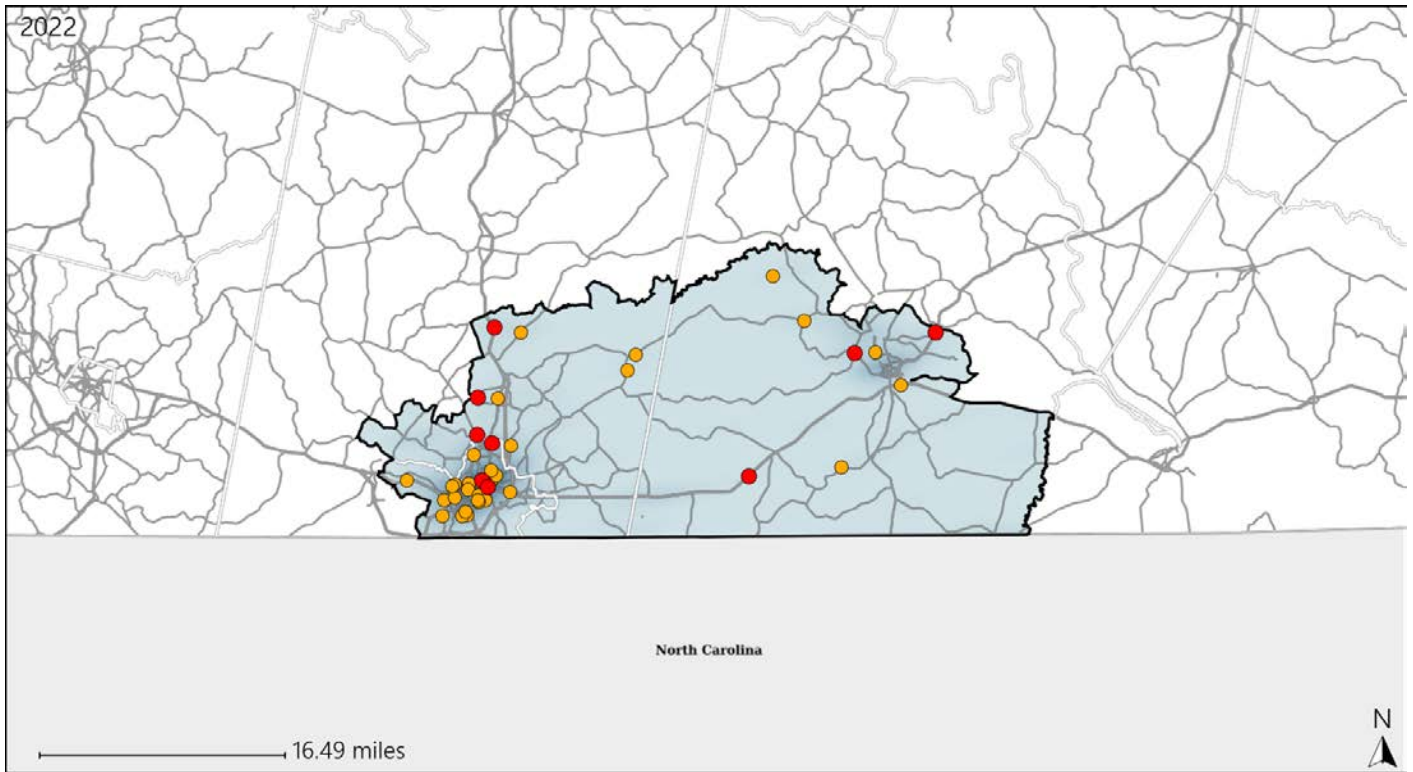


Available Crash Data - Calendar Year (CY)	CY 2019	CY 2020	CY 2021	CY 2022
Total Crashes	1442	1501	1652	1533
Fatal Crashes	10	12	16	16
Injury Crashes	573	505	552	557
Alcohol-Related Fatal Crashes	4	3	1	8
Percent of Alcohol-Related Fatal Crashes to Total Fatal Crashes	40%	25%	6%	50%
Alcohol-Related Injury Crashes	35	48	37	37
Percent of Alcohol-Related Injury Crashes to Total Injury Crashes	6%	10%	7%	7%

# Virginia House District 49 Speed Crash Statistics

Report Generated May, 2023

	Count	Highest Time Period(s)	Highest Day(s)	Highest Month(s)
<b>Fatal Crashes</b>	<b>9</b>	<b>9:00pm - 11:59pm</b>	<b>Saturday</b>	<b>April • June</b>
<b>Resulting Fatalities</b>	<b>11</b>	(33%)	(33%)	(44%)
<b>Serious Injury Crashes</b>	<b>32</b>	<b>9:00pm - 11:59pm Noon - 2:59pm</b>	<b>Friday</b>	<b>August</b>
		(44%)	(31%)	(19%)



## House District 49 Speed-Related Crashes

Interstate Crashes                      Non-interstate Crashes

- Fatal                                      ● Fatal
- ⊕ Serious Injury                      ⊕ Serious Injury

The blue gradient represents the density of all speed-related crashes.

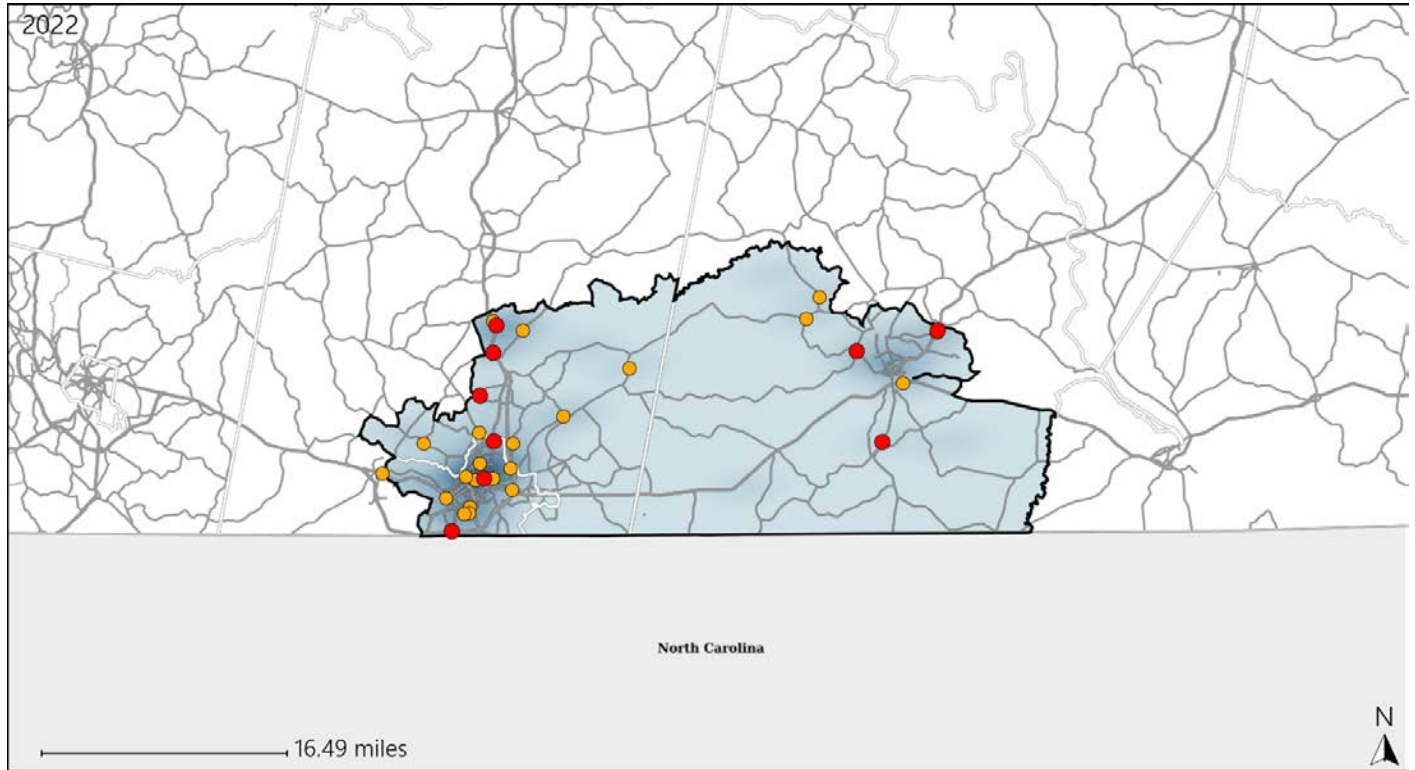


Available Crash Data - Calendar Year (CY)	CY 2019	CY 2020	CY 2021	CY 2022
Total Crashes	1442	1501	1652	1533
Fatal Crashes	10	12	16	16
Injury Crashes	573	505	552	557
Speed-Related Fatal Crashes	6	7	8	9
Percent of Speed-Related Fatal Crashes to Total Fatal Crashes	60%	58%	50%	56%
Speed-Related Injury Crashes	91	91	80	101
Percent of Speed-Related Injury Crashes to Total Injury Crashes	16%	18%	14%	18%

# Virginia House District 49 Unrestrained Crash Statistics

Report Generated May, 2023

	Count	Highest Time Period(s)	Highest Day(s)	Highest Month(s)
<b>Fatal Crashes</b>	<b>9</b>	<b>6:00am - 8:59am</b>	<b>Monday • Saturday</b>	<b>September</b>
<b>Unrestrained Fatalities</b>	<b>11</b>	<b>6:00pm - 8:59pm</b> (44%)	<b>(44%)</b>	<b>(33%)</b>
<b>Serious Injury Crashes</b>	<b>22</b>	<b>9:00pm - 11:59pm</b> (23%)	<b>Friday</b> (36%)	<b>August</b> (23%)



## House District 49 Unrestrained-Related Crashes

- |                    |                        |
|--------------------|------------------------|
| Interstate Crashes | Non-interstate Crashes |
| ● Fatal            | ● Fatal                |
| ● Serious Injury   | ● Serious Injury       |

The blue gradient represents the density of all unrestrained-related crashes.



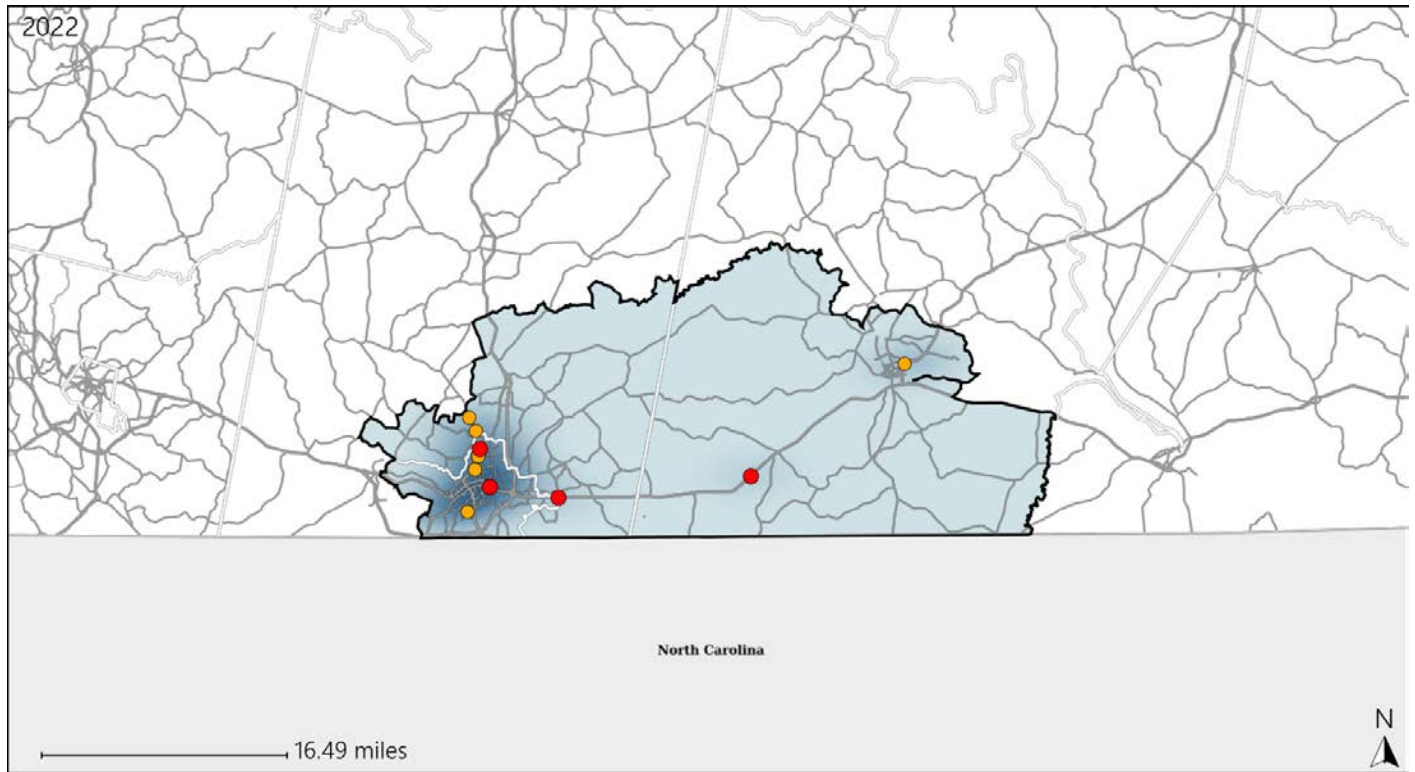
Available Crash Data - Calendar Year (CY)	CY 2019	CY 2020	CY 2021	CY 2022
Total Crashes	1442	1501	1652	1533
Fatalities	10	13	17	18
Injuries	833	664	762	746
Unrestrained Fatalities	5	4	9	11
Percent of Unrestrained Fatalities to Total Fatalities	50%	31%	53%	61%
Unrestrained Injuries	43	52	81	58
Percent of Unrestrained Injuries to Total Injuries	5%	8%	11%	8%



# Virginia House District 49 Pedestrian Crash Statistics

Report Generated May, 2023

	Count	Highest Time Period(s)	Highest Day(s)	Highest Month(s)
<b>Fatal Crashes</b>	<b>4</b>	<b>9:00pm - 11:59pm</b>	<b>Saturday • Sunday</b>	<b>June</b>
<b>Pedestrian Fatalities</b>	<b>4</b>	(75%)	(50%)	(50%)
<b>Serious Injury Crashes</b>	<b>6</b>	<b>6:00pm - 8:59pm</b> <b>9:00pm - 11:59pm</b>	<b>Monday</b>	<b>December • February</b>
		(66%)	(50%)	(66%)



## House District 49 Pedestrian-Related Crashes

- |                    |                        |
|--------------------|------------------------|
| Interstate Crashes | Non-interstate Crashes |
| ● Fatal            | ● Fatal                |
| ⊕ Serious Injury   | ● Serious Injury       |

The blue gradient represents the density of all pedestrian-related crashes.

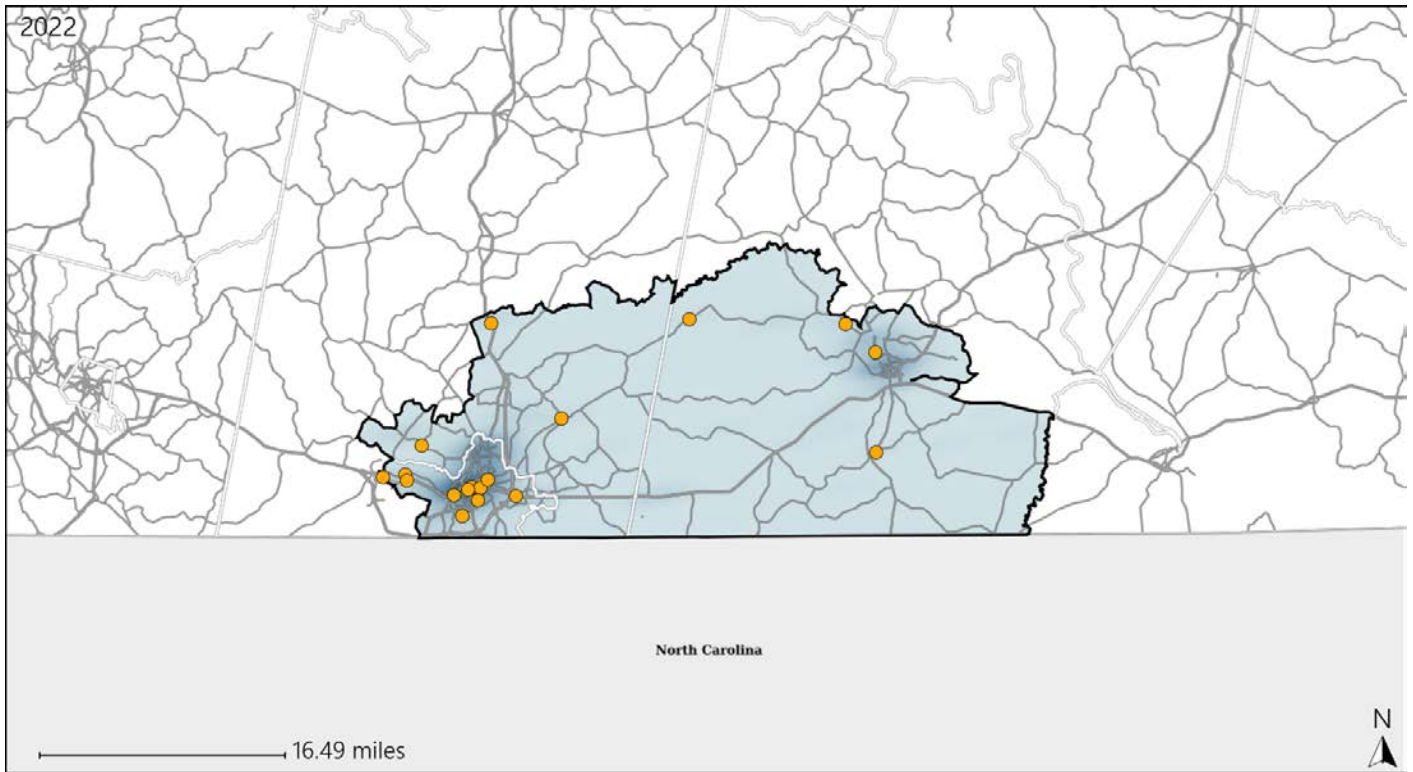


Available Crash Data - Calendar Year (CY)	CY 2019	CY 2020	CY 2021	CY 2022
Total Crashes	1442	1501	1652	1533
Fatal Crashes	10	12	16	16
Injury Crashes	573	505	552	557
Pedestrian-Related Fatal Crashes	1	0	2	4
Percent of Pedestrian-Related Fatal Crashes to Total Fatal Crashes	10%	0%	13%	25%
Pedestrian-Related Injury Crashes	16	11	11	18
Percent of Pedestrian-Related Injury Crashes to Total Injury Crashes	3%	2%	2%	3%

# Virginia House District 49 Distracted Driving Crash Statistics

Report Generated May, 2023

	Count	Highest Time Period(s)	Highest Day(s)	Highest Month(s)
<b>Fatal Crashes</b>	<b>0</b>	-	-	-
<b>Resulting Fatalities</b>	<b>0</b>	-	-	-
<b>Serious Injury Crashes</b>	<b>18</b>	3:00pm - 5:59pm Noon - 2:59pm (44%)	Friday (28%)	April (22%)



## House District 49 Distracted Driving-Related Crashes

- |                    |                        |
|--------------------|------------------------|
| Interstate Crashes | Non-interstate Crashes |
| ● Fatal            | ● Fatal                |
| ⊕ Serious Injury   | ● Serious Injury       |

The blue gradient represents the density of all distracted driving-related crashes.



Available Crash Data - Calendar Year (CY)	CY 2019	CY 2020	CY 2021	CY 2022
Total Crashes	1442	1501	1652	1533
Fatal Crashes	10	12	16	16
Injury Crashes	573	505	552	557
Distracted Driving-Related Fatal Crashes	2	1	1	0
Percent of Distracted Driving-Related Fatal Crashes to Total Fatal Crashes	20%	8%	6%	0%
Distracted Driving-Related Injury Crashes	75	87	74	75
Percent of Distracted Driving-Related Injury Crashes to Total Injury Crashes	13%	17%	13%	13%