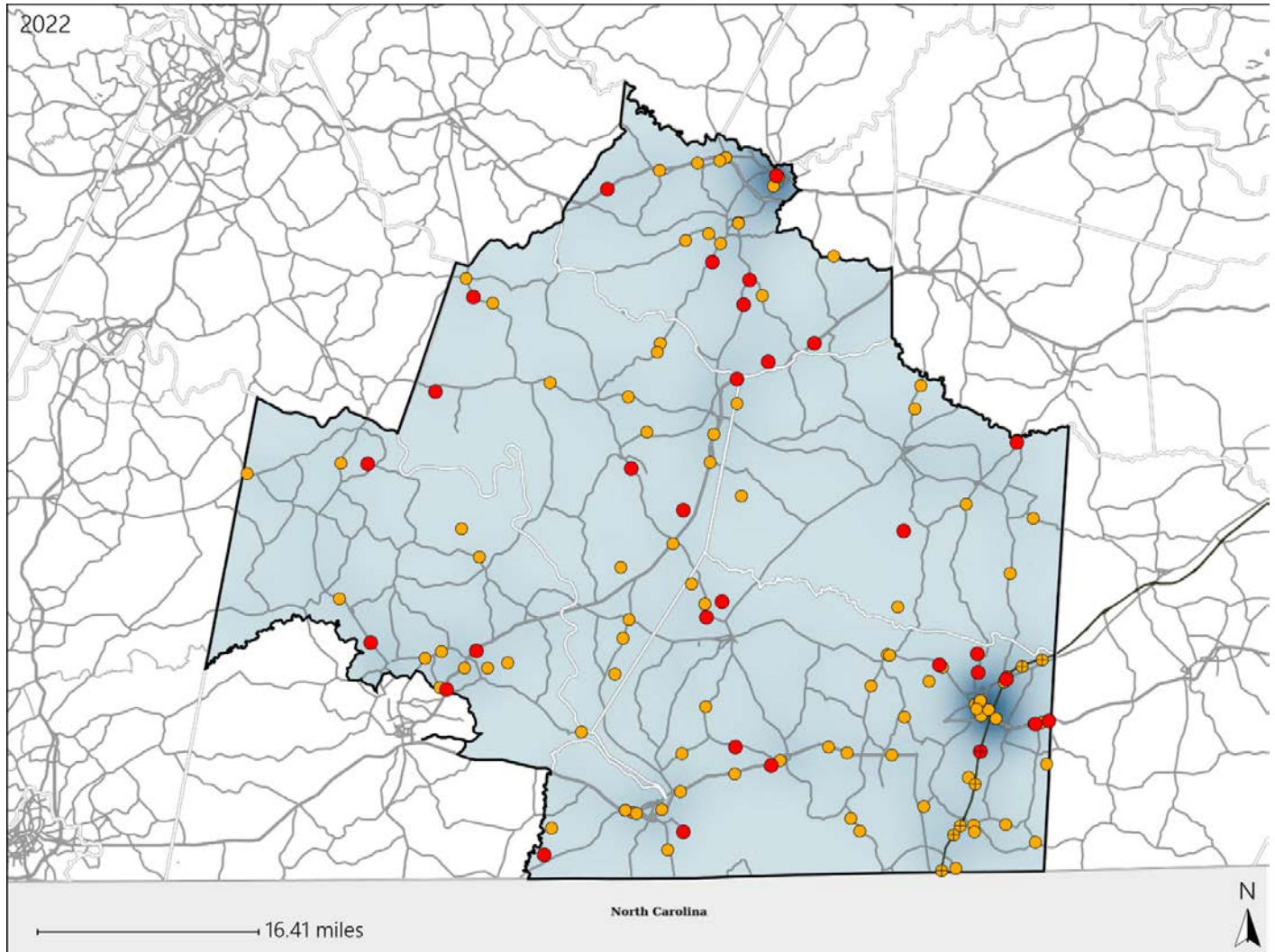


Virginia House District 50 Crash Statistics

Report Generated May, 2023

	Count	Highest Time Period(s)	Highest Day(s)	Highest Month(s)
Fatal Crashes	31	6:00pm - 8:59pm	Friday • Wednesday	December
Resulting Fatalities	34	(29%)	(46%)	(19%)
Serious Injury Crashes	100	3:00pm - 5:59pm	Saturday • Sunday	July • March
		(21%)	(34%)	(28%)



House District 50 Crashes

Interstate Crashes

- Fatal
- Serious Injury

Non-interstate Crashes

- Fatal
- Serious Injury

The blue gradient represents the density of all crashes.

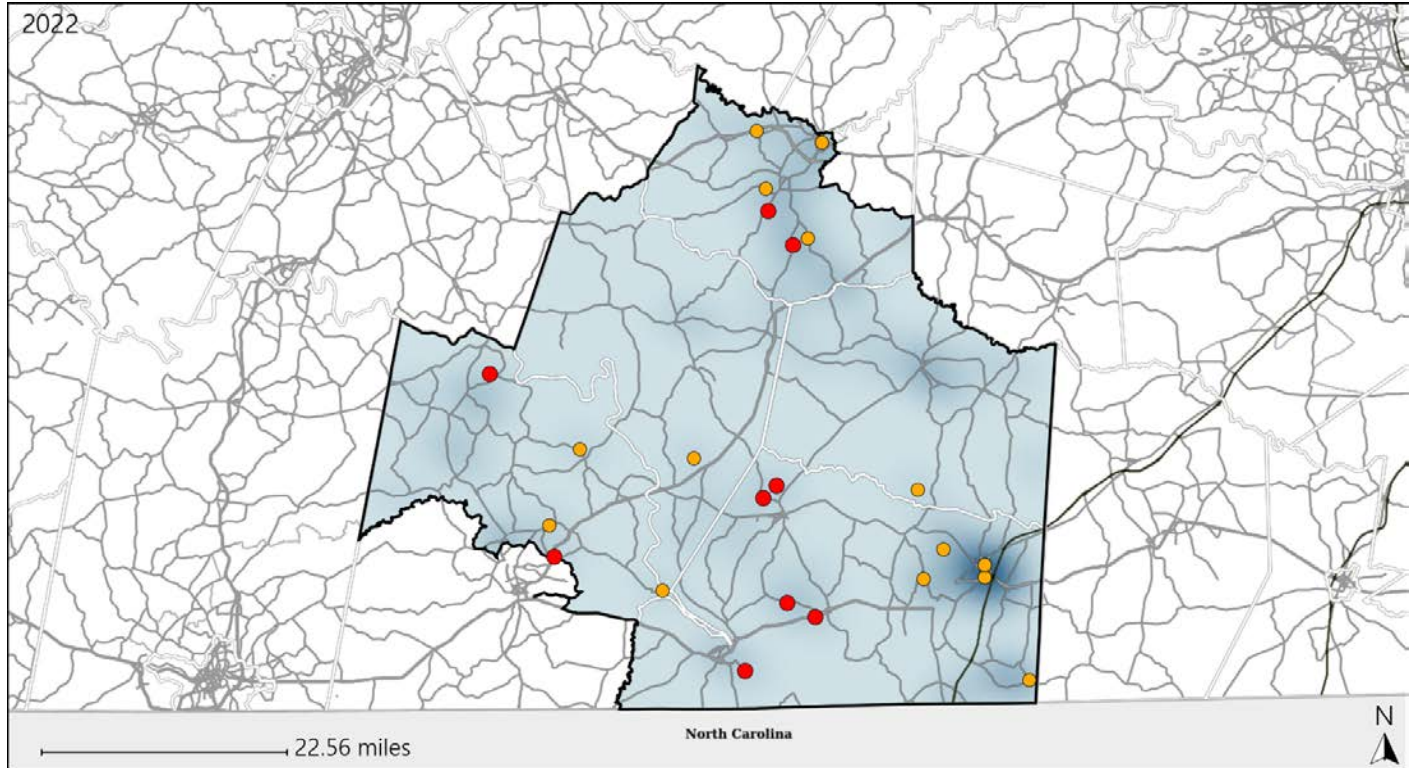


Available Crash Data - Calendar Year (CY)	CY 2019	CY 2020	CY 2021	CY 2022
Total Crashes	1183	1037	1228	1180
Fatal Crashes	25	16	27	31
Injury Crashes	392	324	379	358

Virginia House District 50 Alcohol Crash Statistics

Report Generated May, 2023

	Count	Highest Time Period(s)	Highest Day(s)	Highest Month(s)
Fatal Crashes	9	9:00pm - 11:59pm	Saturday	February • January
Resulting Fatalities	10	(44%)	(56%)	(44%)
Serious Injury Crashes	14	9:00pm - 11:59pm	Sunday	July • May
		(36%)	(29%)	(42%)




House District 50 Alcohol-Related Crashes


Interstate Crashes

Non-interstate Crashes

 Fatal

 Fatal

 Serious Injury

 Serious Injury

The blue gradient represents the density of all alcohol-related crashes.

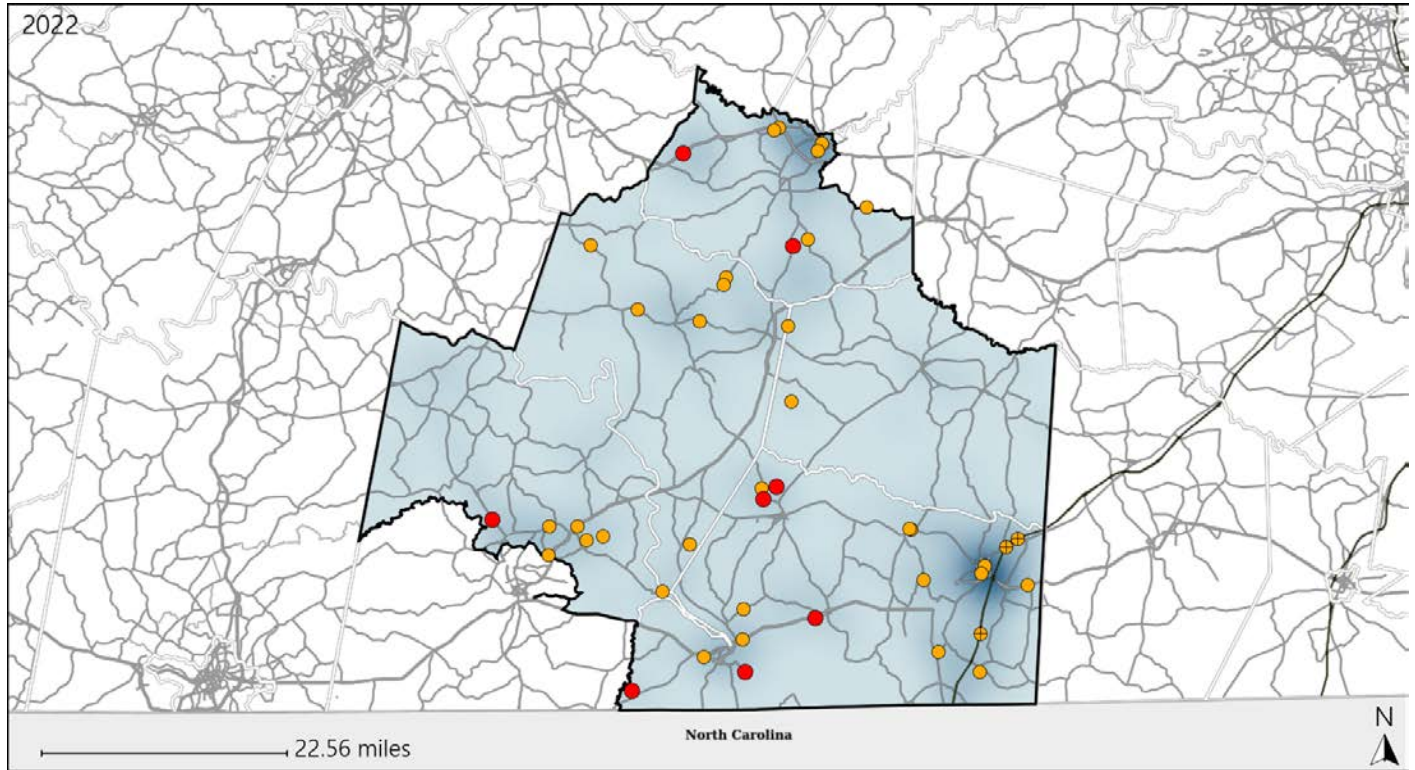


Available Crash Data - Calendar Year (CY)	CY 2019	CY 2020	CY 2021	CY 2022
Total Crashes	1183	1037	1228	1180
Fatal Crashes	25	16	27	31
Injury Crashes	392	324	379	358
Alcohol-Related Fatal Crashes	8	5	3	9
Percent of Alcohol-Related Fatal Crashes to Total Fatal Crashes	32%	31%	11%	29%
Alcohol-Related Injury Crashes	28	39	42	42
Percent of Alcohol-Related Injury Crashes to Total Injury Crashes	7%	12%	11%	12%

Virginia House District 50 Speed Crash Statistics

Report Generated May, 2023

	Count	Highest Time Period(s)	Highest Day(s)	Highest Month(s)
Fatal Crashes	8	6:00pm - 8:59pm	Saturday	September
Resulting Fatalities	9	9:00pm - 11:59pm (76%)	(50%)	(25%)
Serious Injury Crashes	35	3:00pm - 5:59pm (26%)	Saturday (23%)	July (17%)



House District 50 Speed-Related Crashes

Interstate Crashes

Non-interstate Crashes

- Fatal
- Serious Injury

- Fatal
- Serious Injury

The blue gradient represents the density of all speed-related crashes.

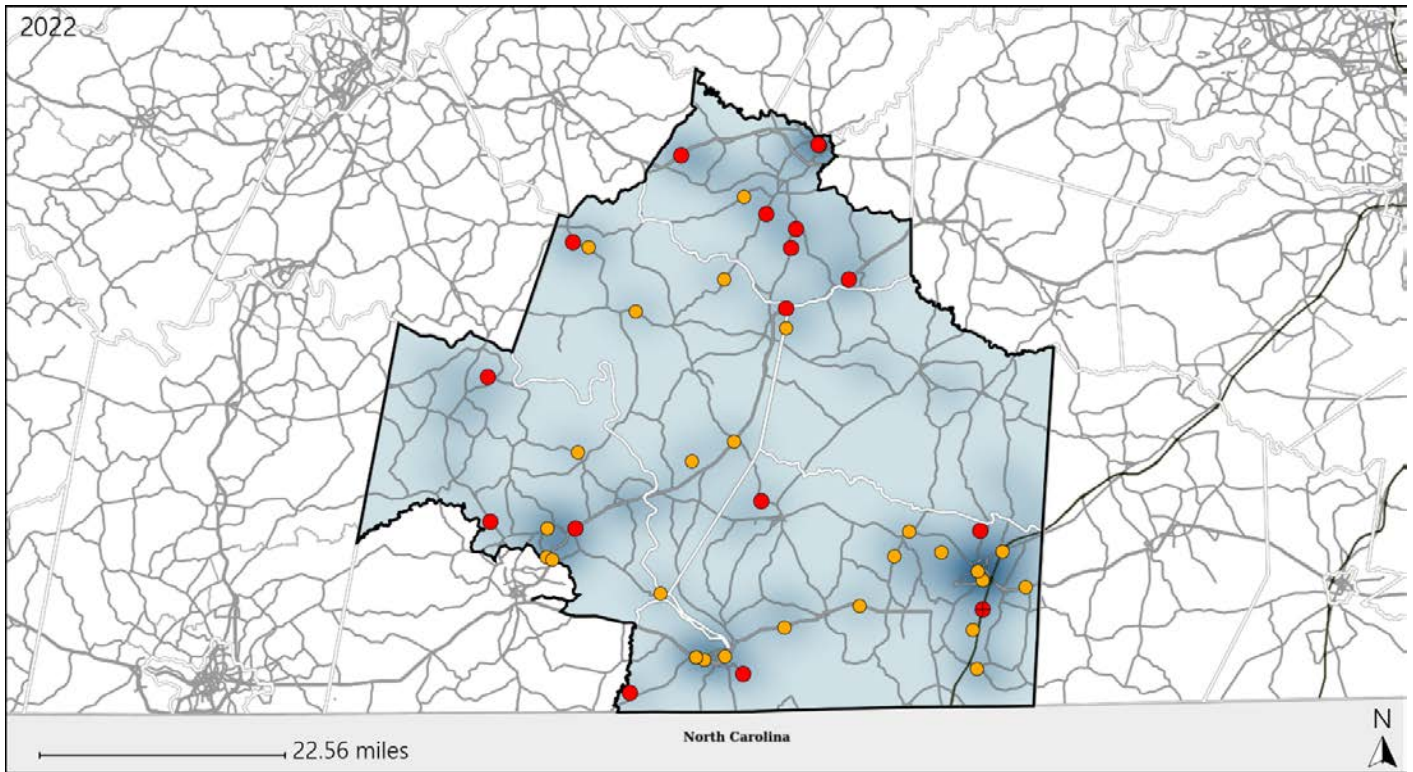


Available Crash Data - Calendar Year (CY)	CY 2019	CY 2020	CY 2021	CY 2022
Total Crashes	1183	1037	1228	1180
Fatal Crashes	25	16	27	31
Injury Crashes	392	324	379	358
Speed-Related Fatal Crashes	13	5	13	8
Percent of Speed-Related Fatal Crashes to Total Fatal Crashes	52%	31%	48%	26%
Speed-Related Injury Crashes	109	91	108	100
Percent of Speed-Related Injury Crashes to Total Injury Crashes	28%	28%	28%	28%

Virginia House District 50 Unrestrained Crash Statistics

Report Generated May, 2023

	Count	Highest Time Period(s)	Highest Day(s)	Highest Month(s)
Fatal Crashes	16	9:00pm - 11:59pm	Saturday	September
Unrestrained Fatalities	19	(38%)	(25%)	(25%)
Serious Injury Crashes	28	9:00pm - 11:59pm Noon - 2:59pm	Saturday • Wednesday	January • May
		(42%)	(42%)	(36%)



House District 50 Unrestrained-Related Crashes

Interstate Crashes

- Fatal
- Serious Injury

Non-interstate Crashes

- Fatal
- Serious Injury

The blue gradient represents the density of all unrestrained-related crashes.

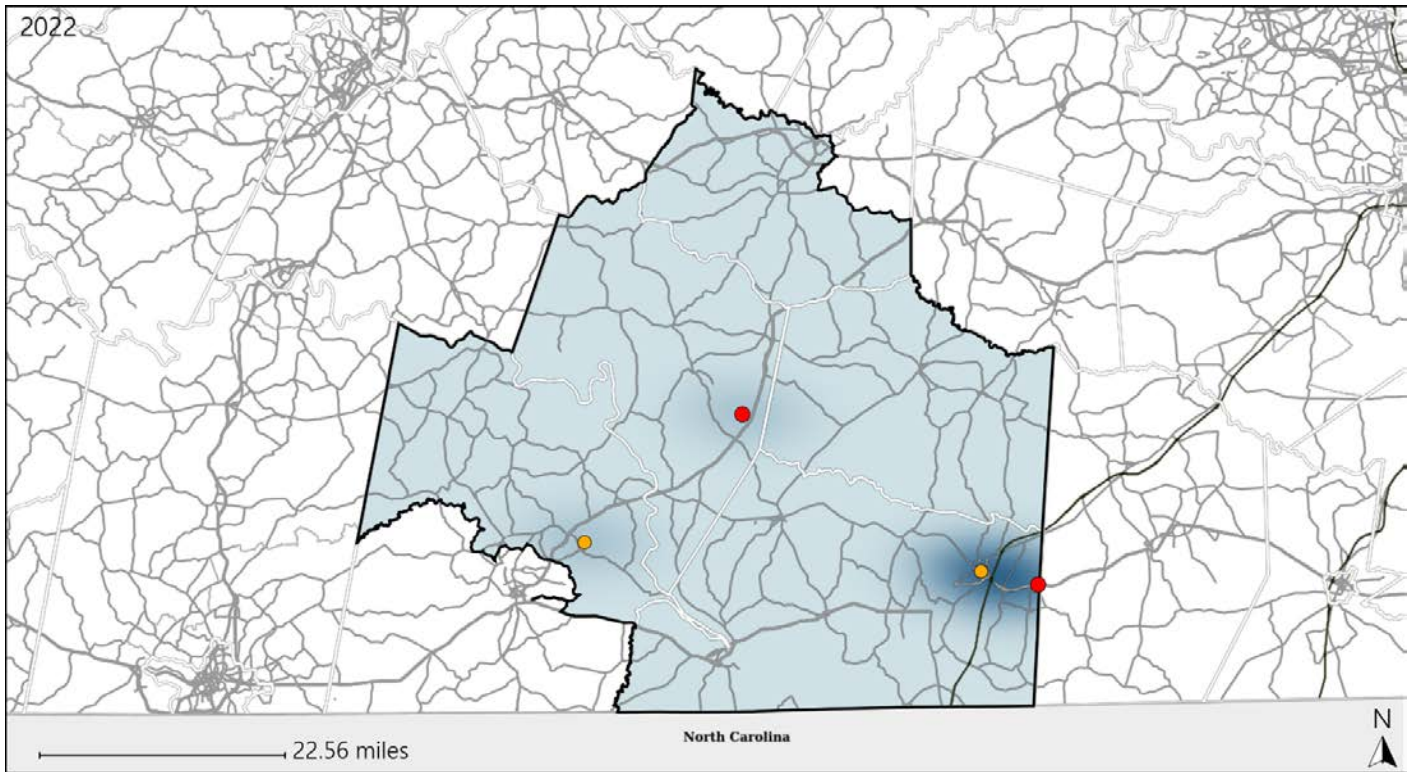


Available Crash Data - Calendar Year (CY)	CY 2019	CY 2020	CY 2021	CY 2022
Total Crashes	1183	1037	1228	1180
Fatalities	27	16	31	34
Injuries	592	480	554	494
Unrestrained Fatalities	17	8	15	19
Percent of Unrestrained Fatalities to Total Fatalities	63%	50%	48%	56%
Unrestrained Injuries	70	66	87	70
Percent of Unrestrained Injuries to Total Injuries	12%	14%	16%	14%

Virginia House District 50 Pedestrian Crash Statistics

Report Generated May, 2023

	Count	Highest Time Period(s)	Highest Day(s)	Highest Month(s)
Fatal Crashes	2	6:00pm - 8:59pm	Friday • Monday	December • June
Pedestrian Fatalities	2	(100%)	(100%)	(100%)
Serious Injury Crashes	2	3:00pm - 5:59pm 9:00pm - 11:59pm	Friday • Thursday	April • June
		(100%)	(100%)	(100%)



House District 50 Pedestrian-Related Crashes

- | | |
|--|--|
| Interstate Crashes | Non-interstate Crashes |
| ● Fatal | ● Fatal |
| ● Serious Injury | ● Serious Injury |

The blue gradient represents the density of all pedestrian-related crashes.

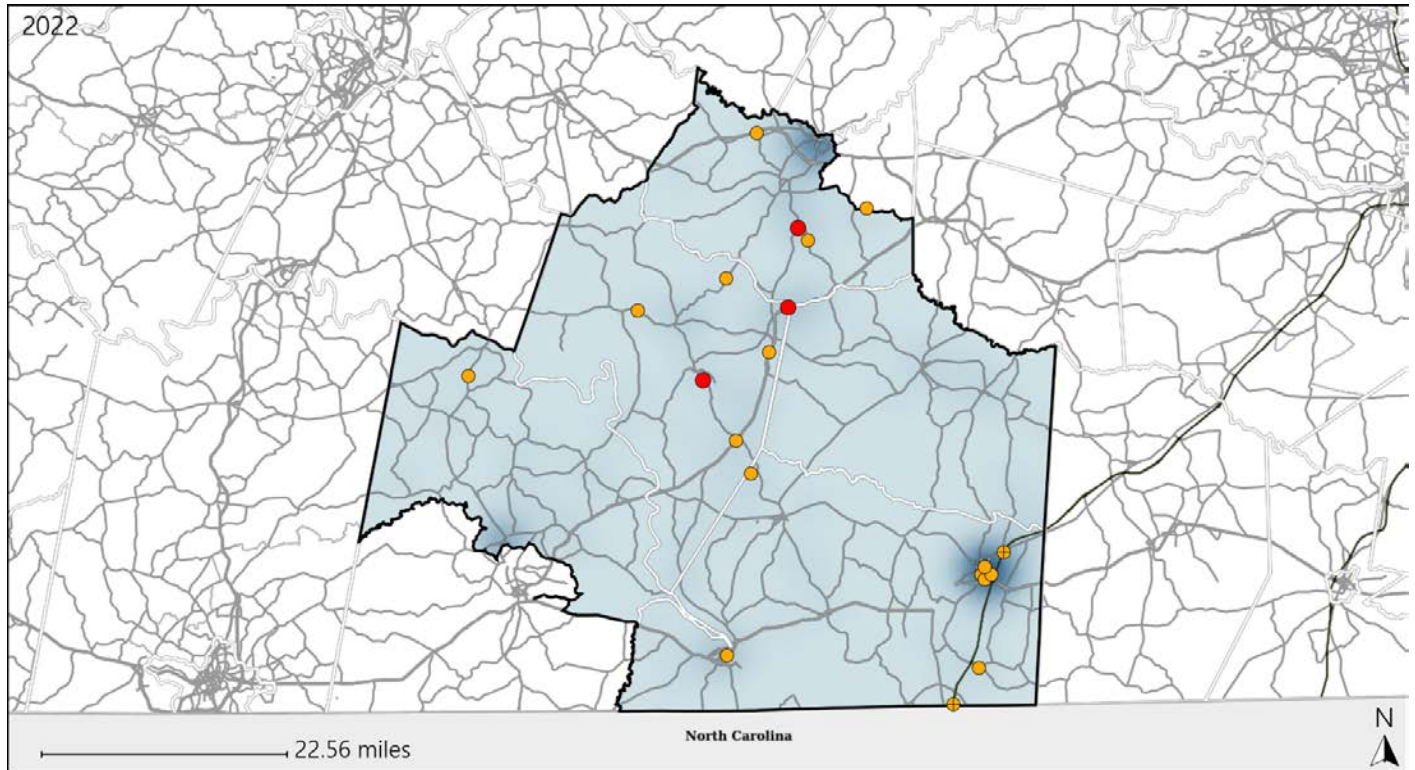


Available Crash Data - Calendar Year (CY)	CY 2019	CY 2020	CY 2021	CY 2022
Total Crashes	1183	1037	1228	1180
Fatal Crashes	25	16	27	31
Injury Crashes	392	324	379	358
Pedestrian-Related Fatal Crashes	2	1	2	2
Percent of Pedestrian-Related Fatal Crashes to Total Fatal Crashes	8%	6%	7%	6%
Pedestrian-Related Injury Crashes	8	3	4	5
Percent of Pedestrian-Related Injury Crashes to Total Injury Crashes	2%	1%	1%	1%

Virginia House District 50 Distracted Driving Crash Statistics

Report Generated May, 2023

	Count	Highest Time Period(s)	Highest Day(s)	Highest Month(s)
Fatal Crashes	3	6:00am - 8:59am	Sunday	February • July
Resulting Fatalities	4	(67%)	(67%)	(66%)
Serious Injury Crashes	17	6:00pm - 8:59pm	Monday • Wednesday	July
		(24%)	(58%)	(35%)



House District 50 Distracted Driving-Related Crashes

- | | |
|--|--|
| Interstate Crashes | Non-interstate Crashes |
| ● Fatal | ● Fatal |
| ● Serious Injury | ● Serious Injury |

The blue gradient represents the density of all distracted driving-related crashes.



Available Crash Data - Calendar Year (CY)	CY 2019	CY 2020	CY 2021	CY 2022
Total Crashes	1183	1037	1228	1180
Fatal Crashes	25	16	27	31
Injury Crashes	392	324	379	358
Distracted Driving-Related Fatal Crashes	2	4	2	3
Percent of Distracted Driving-Related Fatal Crashes to Total Fatal Crashes	8%	25%	7%	10%
Distracted Driving-Related Injury Crashes	62	49	73	54
Percent of Distracted Driving-Related Injury Crashes to Total Injury Crashes	16%	15%	19%	15%