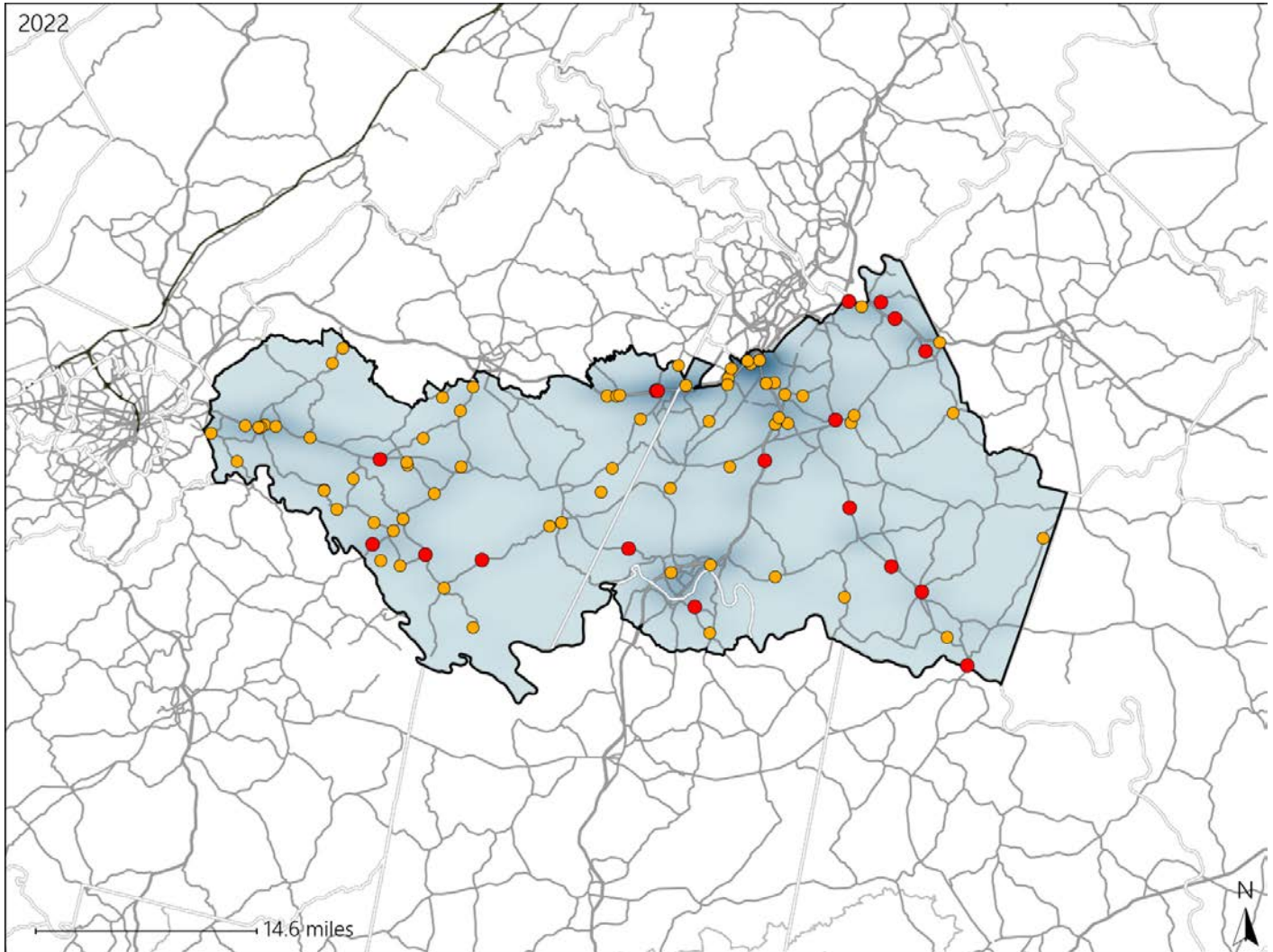


# Virginia House District 51 Crash Statistics

Report Generated May, 2023

	Count	Highest Time Period(s)	Highest Day(s)	Highest Month(s)
<b>Fatal Crashes</b>	<b>18</b>	6:00am - 8:59am	Friday	January • September
<b>Resulting Fatalities</b>	<b>18</b>	9:00pm - 11:59pm (44%)	(39%)	(44%)
<b>Serious Injury Crashes</b>	<b>72</b>	3:00pm - 5:59pm (22%)	Friday • Monday (34%)	September (17%)



## House District 51 Crashes

Interstate Crashes

- Fatal
- Serious Injury

Non-interstate Crashes

- Fatal
- Serious Injury

The blue gradient represents the density of all crashes.

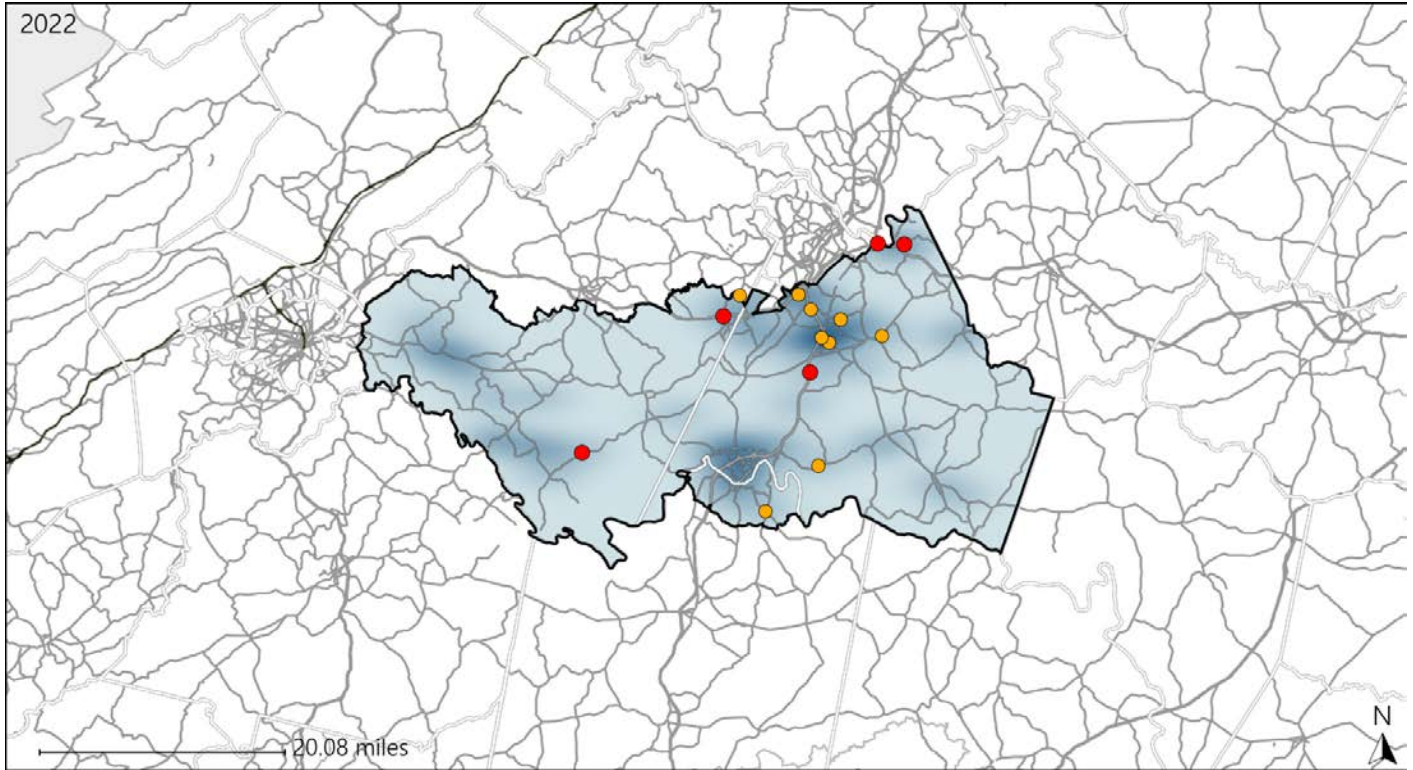


Available Crash Data - Calendar Year (CY)	CY 2019	CY 2020	CY 2021	CY 2022
Total Crashes	1035	915	975	1010
Fatal Crashes	20	14	20	18
Injury Crashes	341	281	299	276

# Virginia House District 51 Alcohol Crash Statistics

Report Generated May, 2023

	Count	Highest Time Period(s)	Highest Day(s)	Highest Month(s)
<b>Fatal Crashes</b>	<b>5</b>	<b>Midnight - 2:59am</b>	<b>Sunday</b>	<b>December • February</b>
<b>Resulting Fatalities</b>	<b>5</b>	(40%)	(40%)	(40%)
<b>Serious Injury Crashes</b>	<b>9</b>	<b>6:00pm - 8:59pm</b>	<b>Monday</b>	<b>September</b>
		(44%)	(33%)	(33%)



### House District 51 Alcohol-Related Crashes

Interstate Crashes

Non-interstate Crashes

- Fatal
- Serious Injury

- Fatal
- Serious Injury

The blue gradient represents the density of all alcohol-related crashes.

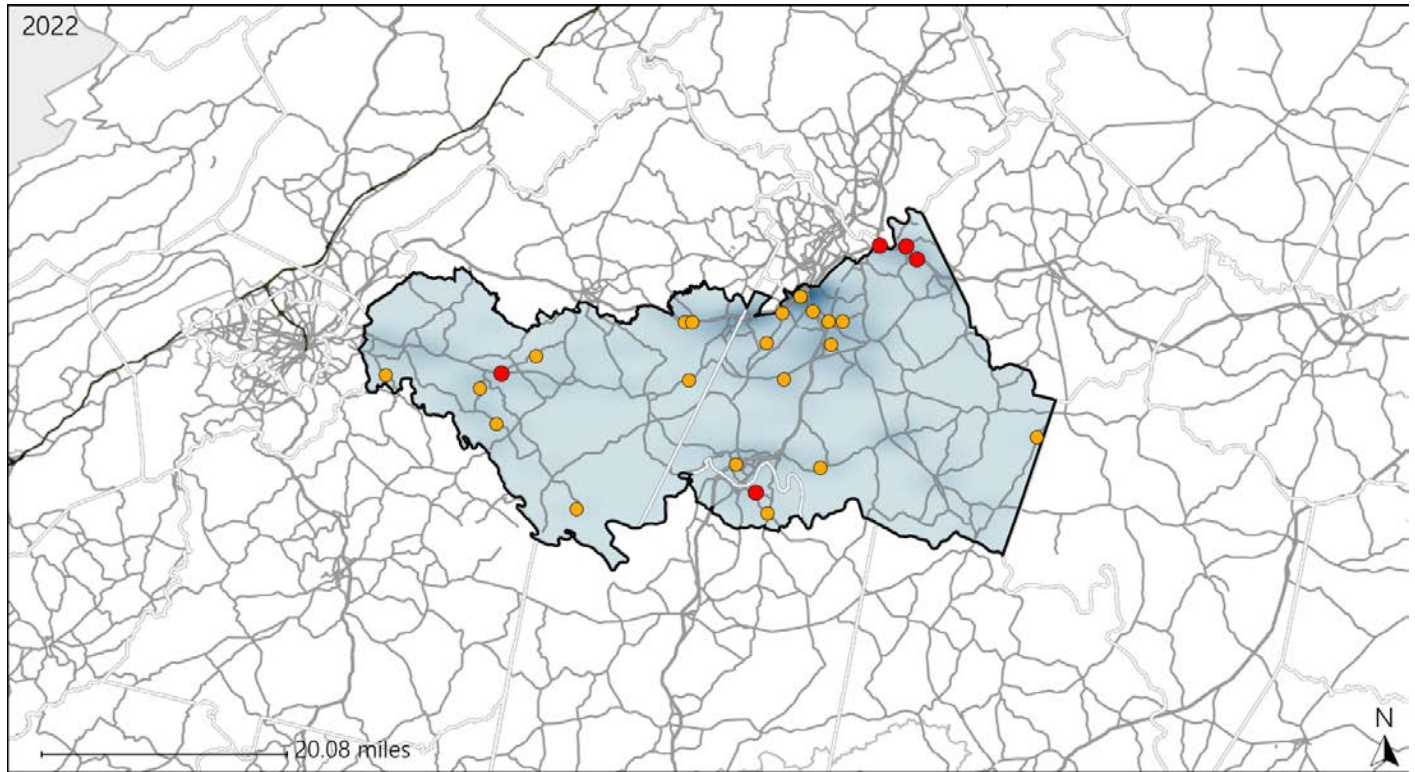


Available Crash Data - Calendar Year (CY)	CY 2019	CY 2020	CY 2021	CY 2022
<b>Total Crashes</b>	<b>1035</b>	<b>915</b>	<b>975</b>	<b>1010</b>
<b>Fatal Crashes</b>	<b>20</b>	<b>14</b>	<b>20</b>	<b>18</b>
<b>Injury Crashes</b>	<b>341</b>	<b>281</b>	<b>299</b>	<b>276</b>
<b>Alcohol-Related Fatal Crashes</b>	<b>8</b>	<b>4</b>	<b>2</b>	<b>5</b>
<b>Percent of Alcohol-Related Fatal Crashes to Total Fatal Crashes</b>	<b>40%</b>	<b>29%</b>	<b>10%</b>	<b>28%</b>
<b>Alcohol-Related Injury Crashes</b>	<b>33</b>	<b>28</b>	<b>25</b>	<b>19</b>
<b>Percent of Alcohol-Related Injury Crashes to Total Injury Crashes</b>	<b>10%</b>	<b>10%</b>	<b>8%</b>	<b>7%</b>

# Virginia House District 51 Speed Crash Statistics

Report Generated May, 2023

	Count	Highest Time Period(s)	Highest Day(s)	Highest Month(s)
<b>Fatal Crashes</b>	<b>5</b>	<b>Midnight - 2:59am</b>	<b>Sunday</b>	<b>September</b>
<b>Resulting Fatalities</b>	<b>5</b>	<b>(40%)</b>	<b>(60%)</b>	<b>(40%)</b>
<b>Serious Injury Crashes</b>	<b>20</b>	<b>6:00pm - 8:59pm</b>	<b>Monday</b>	<b>September</b>
		<b>(30%)</b>	<b>(30%)</b>	<b>(25%)</b>



## House District 51 Speed-Related Crashes

Interstate Crashes                      Non-interstate Crashes  
 ● Fatal                                      ● Fatal  
 ⊕ Serious Injury                          ⊕ Serious Injury

The blue gradient represents the density of all speed-related crashes.



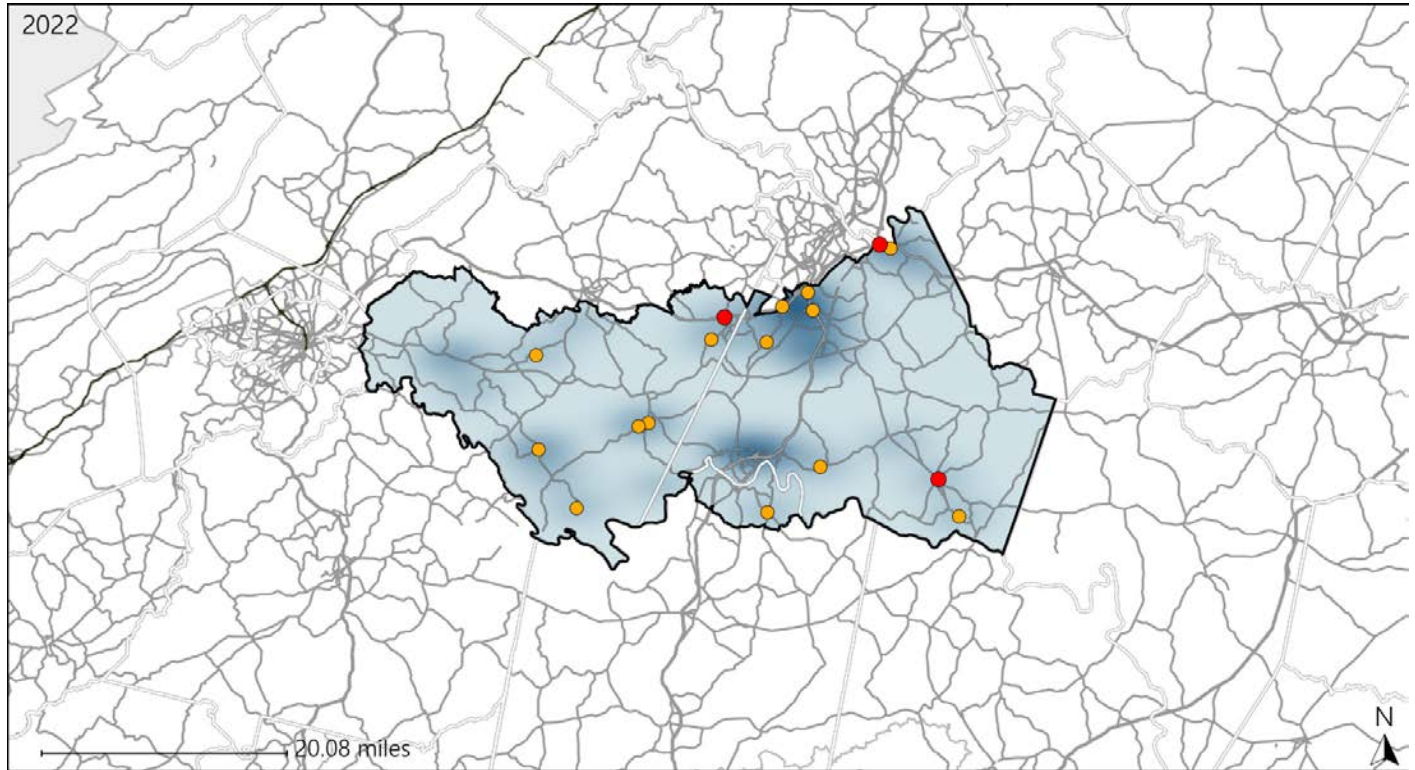
Available Crash Data - Calendar Year (CY)	CY 2019	CY 2020	CY 2021	CY 2022
Total Crashes	1035	915	975	1010
Fatal Crashes	20	14	20	18
Injury Crashes	341	281	299	276
Speed-Related Fatal Crashes	8	2	10	5
Percent of Speed-Related Fatal Crashes to Total Fatal Crashes	40%	14%	50%	28%
Speed-Related Injury Crashes	91	68	72	62
Percent of Speed-Related Injury Crashes to Total Injury Crashes	27%	24%	24%	22%



# Virginia House District 51 Unrestrained Crash Statistics

Report Generated May, 2023

	Count	Highest Time Period(s)	Highest Day(s)	Highest Month(s)
<b>Fatal Crashes</b>	<b>3</b>	<b>6:00am - 8:59am</b>	<b>Friday • Sunday</b>	<b>February</b>
<b>Unrestrained Fatalities</b>	<b>3</b>	<b>9:00pm - 11:59pm</b> (66%)	<b>Friday • Sunday</b> (66%)	<b>February</b> (67%)
<b>Serious Injury Crashes</b>	<b>14</b>	<b>3:00pm - 5:59pm</b> (36%)	<b>Friday</b> (36%)	<b>May • September</b> (42%)



## House District 51 Unrestrained-Related Crashes

- |  |  |
|--|--|
| Interstate Crashes                                   | Non-interstate Crashes                               |
| <span style="color: red;">●</span> Fatal             | <span style="color: red;">●</span> Fatal             |
| <span style="color: orange;">●</span> Serious Injury | <span style="color: orange;">●</span> Serious Injury |

The blue gradient represents the density of all unrestrained-related crashes.

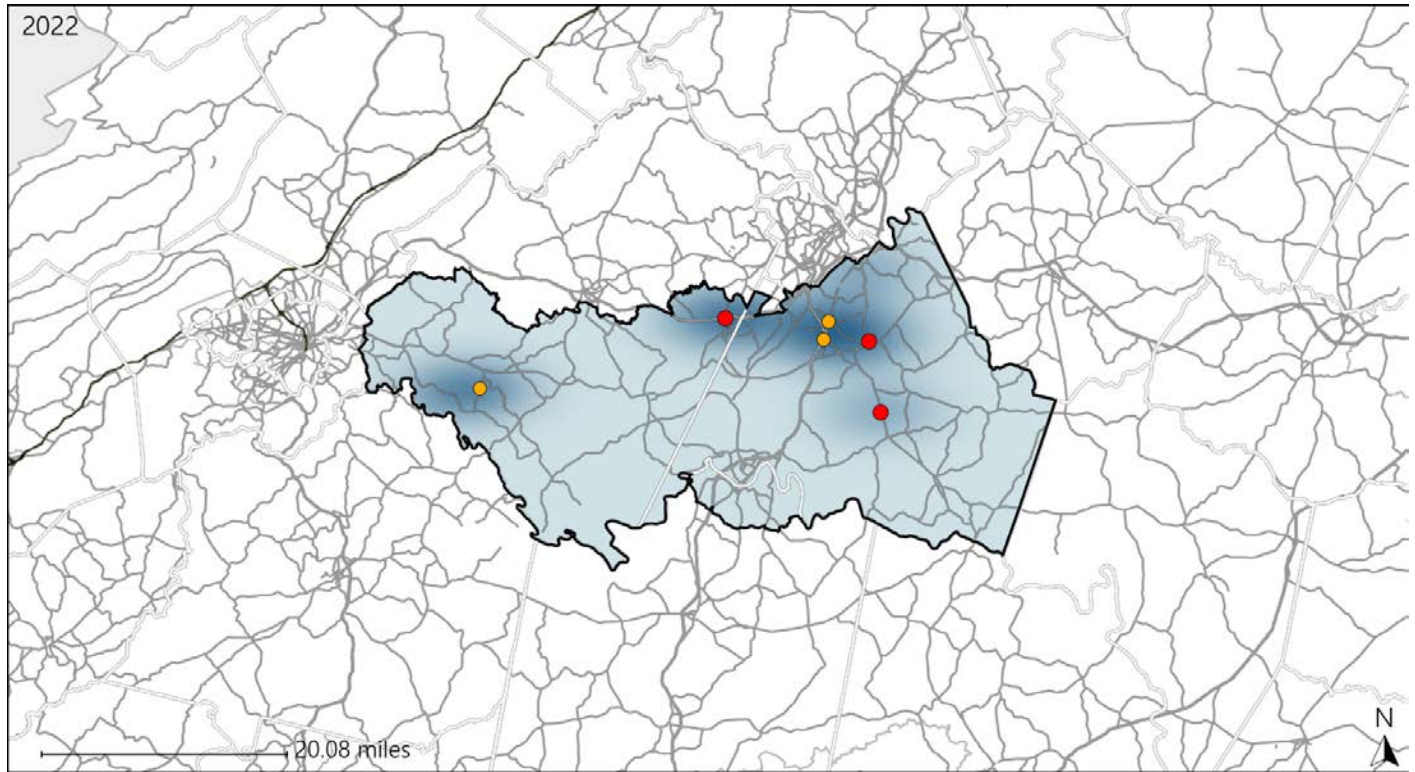


Available Crash Data - Calendar Year (CY)	CY 2019	CY 2020	CY 2021	CY 2022
Total Crashes	1035	915	975	1010
Fatalities	20	14	21	18
Injuries	493	370	429	388
Unrestrained Fatalities	7	6	8	3
Percent of Unrestrained Fatalities to Total Fatalities	35%	43%	38%	17%
Unrestrained Injuries	63	50	47	42
Percent of Unrestrained Injuries to Total Injuries	13%	14%	11%	11%

# Virginia House District 51 Pedestrian Crash Statistics

Report Generated May, 2023

	Count	Highest Time Period(s)	Highest Day(s)	Highest Month(s)
<b>Fatal Crashes</b>	<b>3</b>	<b>Midnight - 2:59am</b>	<b>Friday</b>	<b>December</b>
<b>Pedestrian Fatalities</b>	<b>3</b>	<b>(67%)</b>	<b>(67%)</b>	<b>(67%)</b>
<b>Serious Injury Crashes</b>	<b>3</b>	<b>6:00pm - 8:59pm</b>	<b>Monday • Sunday</b>	<b>July • November</b>
		<b>(67%)</b>	<b>(66%)</b>	<b>(66%)</b>



### House District 51 Pedestrian-Related Crashes

- |                    |                        |
|--------------------|------------------------|
| Interstate Crashes | Non-interstate Crashes |
| Fatal              | Fatal                  |
| Serious Injury     | Serious Injury         |

The blue gradient represents the density of all pedestrian-related crashes.

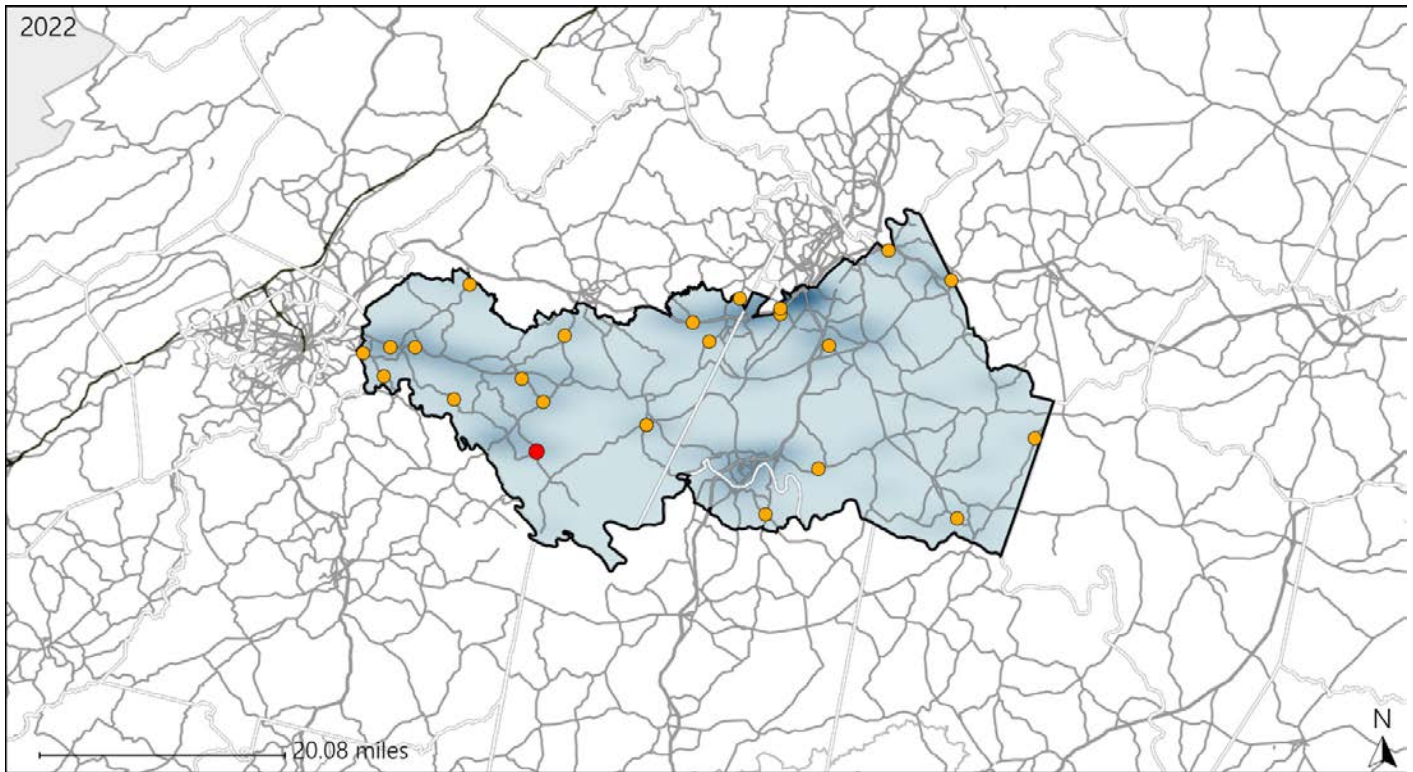


Available Crash Data - Calendar Year (CY)	CY 2019	CY 2020	CY 2021	CY 2022
Total Crashes	1035	915	975	1010
Fatal Crashes	20	14	20	18
Injury Crashes	341	281	299	276
Pedestrian-Related Fatal Crashes	1	2	0	3
Percent of Pedestrian-Related Fatal Crashes to Total Fatal Crashes	5%	14%	0%	17%
Pedestrian-Related Injury Crashes	3	3	8	6
Percent of Pedestrian-Related Injury Crashes to Total Injury Crashes	1%	1%	3%	2%

# Virginia House District 51 Distracted Driving Crash Statistics

Report Generated May, 2023

	Count	Highest Time Period(s)	Highest Day(s)	Highest Month(s)
<b>Fatal Crashes</b>	<b>1</b>	<b>Noon - 2:59pm</b>	<b>Friday</b>	<b>January</b>
<b>Resulting Fatalities</b>	<b>1</b>	<b>(100%)</b>	<b>(100%)</b>	<b>(100%)</b>
<b>Serious Injury Crashes</b>	<b>23</b>	<b>6:00pm - 8:59pm</b> <b>9:00pm - 11:59pm</b>	<b>Friday</b>	<b>September</b>
		<b>(52%)</b>	<b>(26%)</b>	<b>(35%)</b>



## House District 51 Distracted Driving-Related Crashes

- |                    |                        |
|--------------------|------------------------|
| Interstate Crashes | Non-interstate Crashes |
| Fatal              | Fatal                  |
| Serious Injury     | Serious Injury         |

The blue gradient represents the density of all distracted driving-related crashes.



Available Crash Data - Calendar Year (CY)	CY 2019	CY 2020	CY 2021	CY 2022
Total Crashes	1035	915	975	1010
Fatal Crashes	20	14	20	18
Injury Crashes	341	281	299	276
Distracted Driving-Related Fatal Crashes	3	1	2	1
Percent of Distracted Driving-Related Fatal Crashes to Total Fatal Crashes	15%	7%	10%	6%
Distracted Driving-Related Injury Crashes	75	53	52	49
Percent of Distracted Driving-Related Injury Crashes to Total Injury Crashes	22%	19%	17%	18%