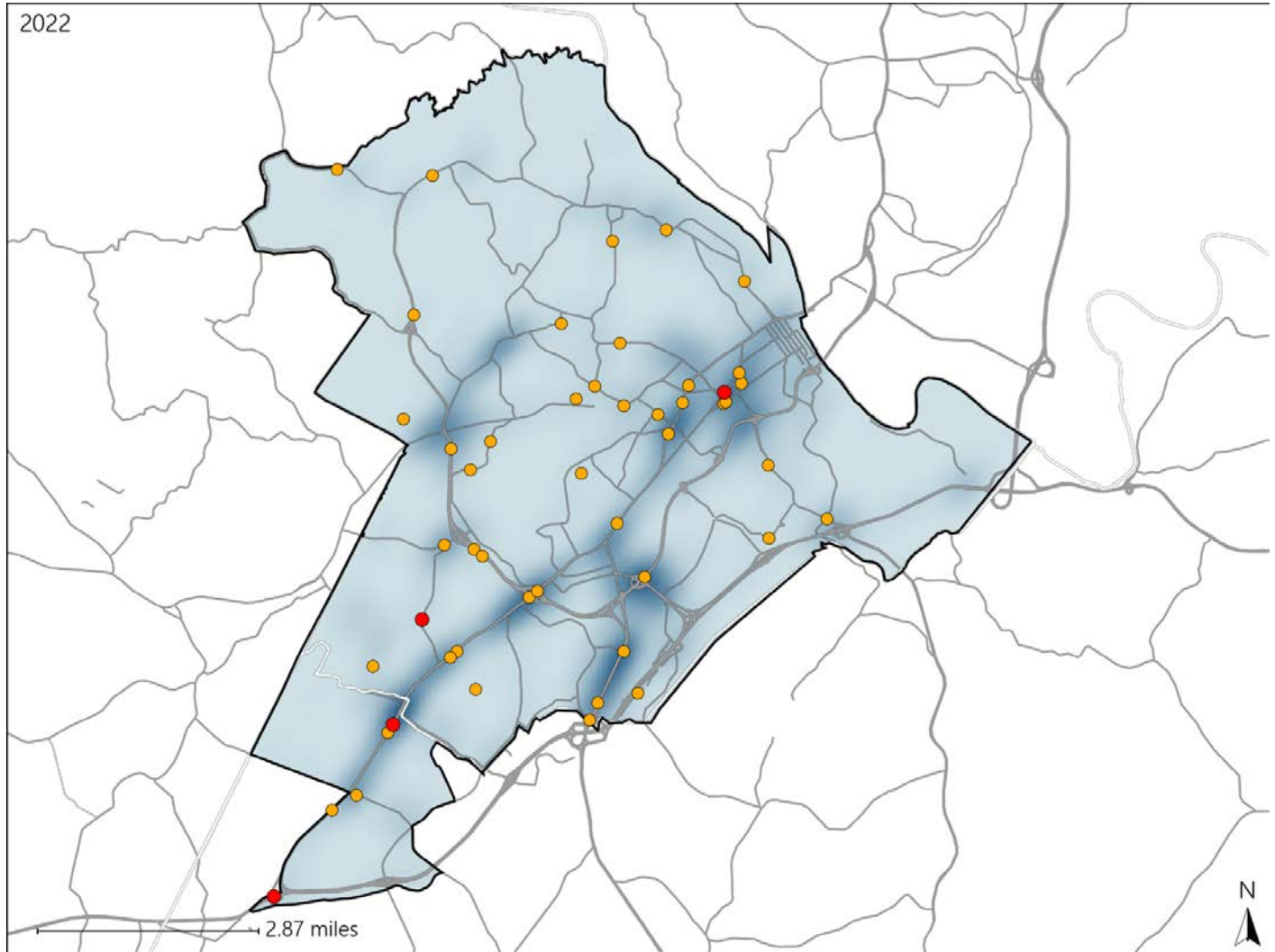


# Virginia House District 52 Crash Statistics

Report Generated May, 2023

	Count	Highest Time Period(s)	Highest Day(s)	Highest Month(s)
<b>Fatal Crashes</b>	<b>4</b>	3:00am - 5:59am	Saturday	February • May
<b>Resulting Fatalities</b>	<b>4</b>	3:00pm - 5:59pm (50%)	(75%)	(50%)
<b>Serious Injury Crashes</b>	<b>46</b>	6:00pm - 8:59pm (26%)	Wednesday (22%)	April • September (26%)



### House District 52 Crashes

Interstate Crashes

- Fatal
- Serious Injury

Non-interstate Crashes

- Fatal
- Serious Injury

The blue gradient represents the density of all crashes.

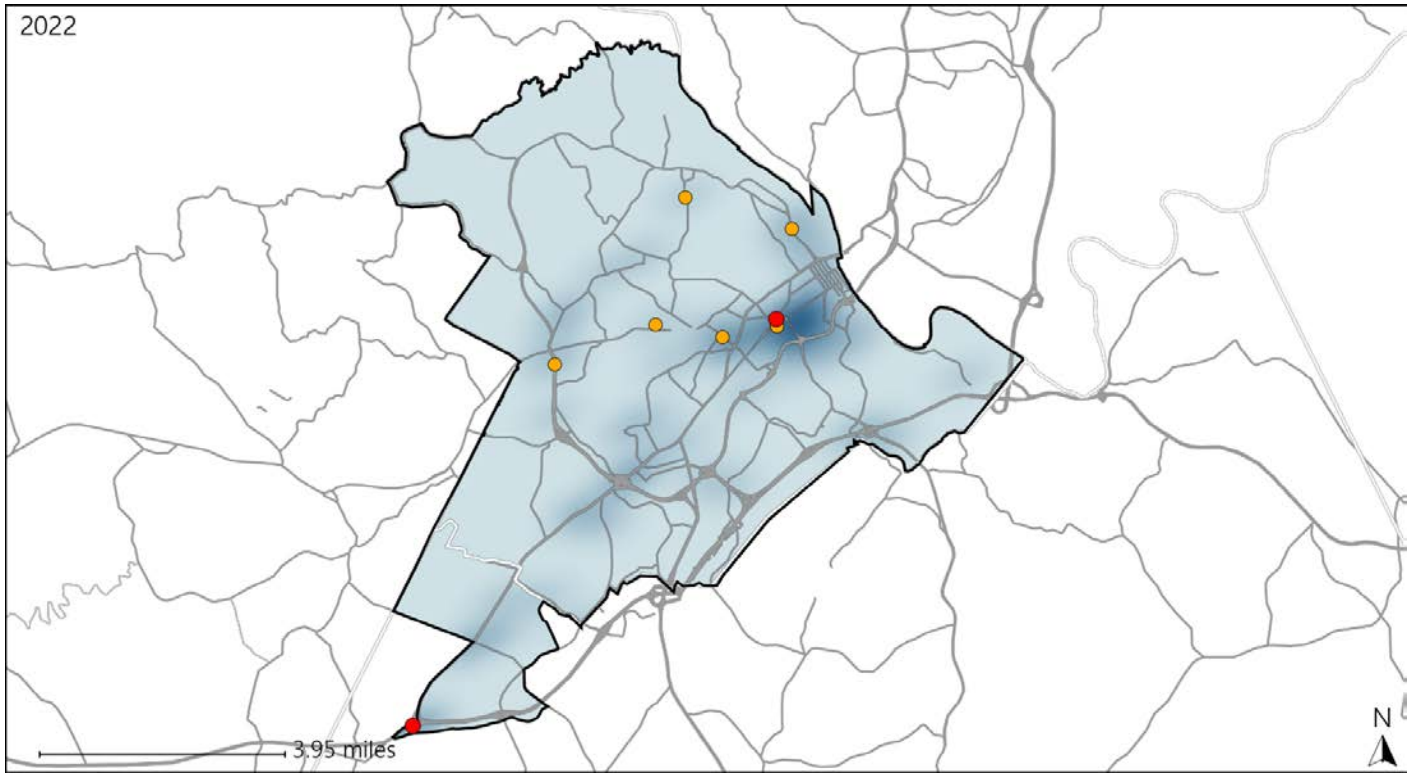


Available Crash Data - Calendar Year (CY)	CY 2019	CY 2020	CY 2021	CY 2022
Total Crashes	1587	1207	1254	1282
Fatal Crashes	4	7	9	4
Injury Crashes	651	433	447	419

# Virginia House District 52 Alcohol Crash Statistics

Report Generated May, 2023

	Count	Highest Time Period(s)	Highest Day(s)	Highest Month(s)
<b>Fatal Crashes</b>	<b>2</b>	<b>3:00am - 5:59am</b>	<b>Saturday</b>	<b>February • May</b>
<b>Resulting Fatalities</b>	<b>2</b>	<b>Midnight - 2:59am</b> (100%)	<b>(100%)</b>	<b>(100%)</b>
<b>Serious Injury Crashes</b>	<b>6</b>	<b>6:00pm - 8:59pm</b>	<b>Thursday</b>	<b>April • June</b>
		<b>Midnight - 2:59am</b> (100%)	<b>(33%)</b>	<b>(34%)</b>



### House District 52 Alcohol-Related Crashes

Interstate Crashes                      Non-interstate Crashes  
 ● Fatal                                      ● Fatal  
 ⊕ Serious Injury                          ⊕ Serious Injury

The blue gradient represents the density of all alcohol-related crashes.

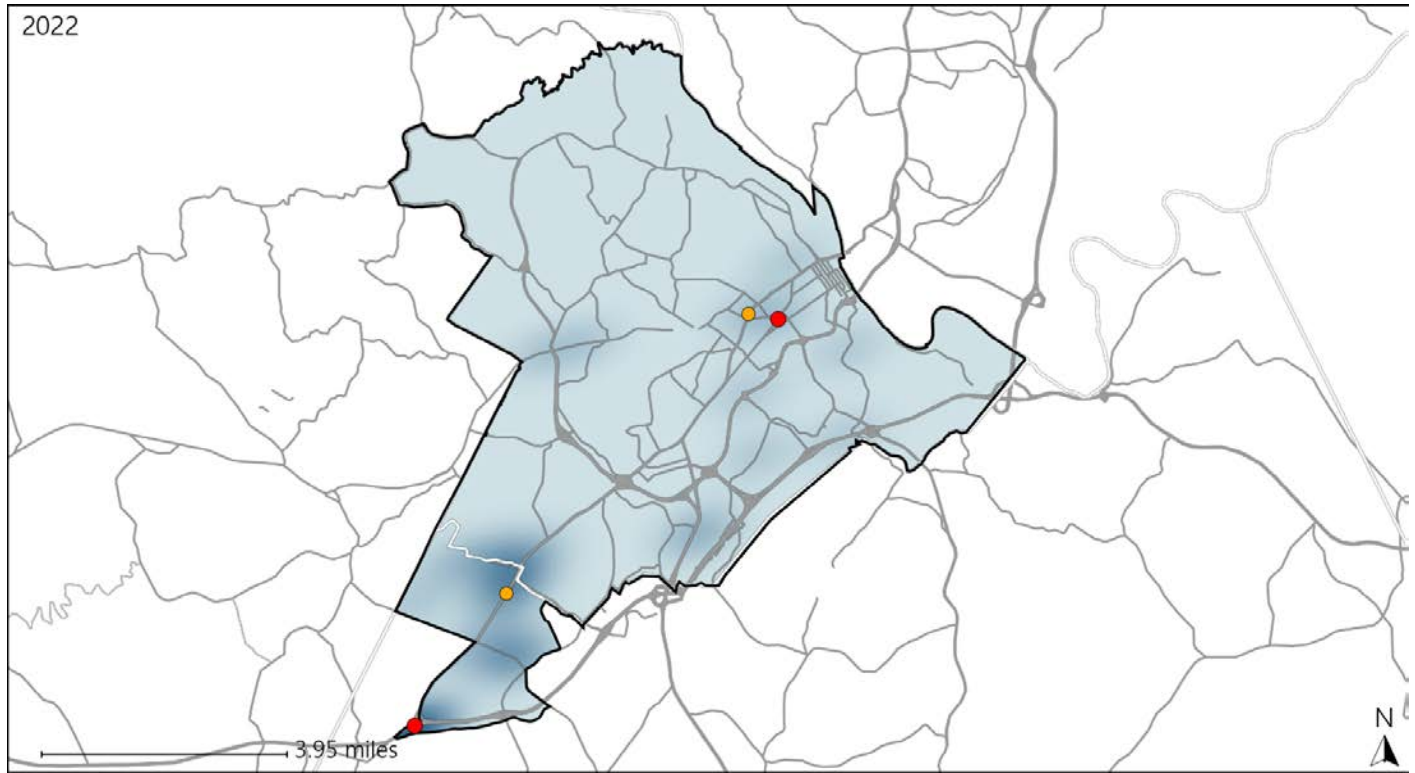


Available Crash Data - Calendar Year (CY)	CY 2019	CY 2020	CY 2021	CY 2022
Total Crashes	1587	1207	1254	1282
Fatal Crashes	4	7	9	4
Injury Crashes	651	433	447	419
Alcohol-Related Fatal Crashes	0	3	3	2
Percent of Alcohol-Related Fatal Crashes to Total Fatal Crashes	0%	43%	33%	50%
Alcohol-Related Injury Crashes	57	38	35	26
Percent of Alcohol-Related Injury Crashes to Total Injury Crashes	9%	9%	8%	6%

# Virginia House District 52 Speed Crash Statistics

Report Generated May, 2023

	Count	Highest Time Period(s)	Highest Day(s)	Highest Month(s)
<b>Fatal Crashes</b>	<b>2</b>	3:00am - 5:59am	Saturday	February • May
<b>Resulting Fatalities</b>	<b>2</b>	Midnight - 2:59am (100%)	(100%)	(100%)
<b>Serious Injury Crashes</b>	<b>2</b>	3:00pm - 5:59pm	Saturday • Wednesday	December • July
		9:00pm - 11:59pm (100%)	(100%)	(100%)



## House District 52 Speed-Related Crashes

Interstate Crashes                      Non-interstate Crashes  
 ● Fatal                                      ● Fatal  
 ⊕ Serious Injury                          ⊕ Serious Injury

The blue gradient represents the density of all speed-related crashes.

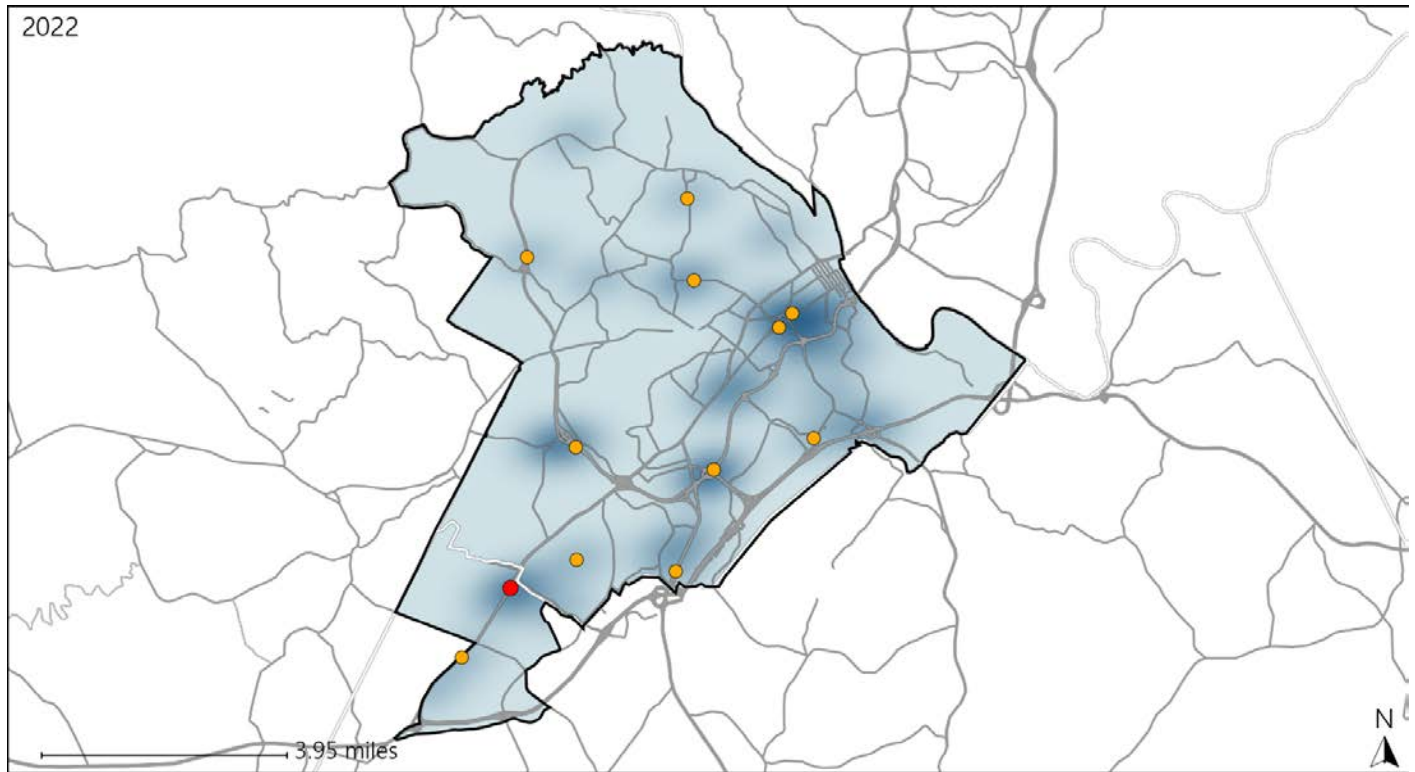


Available Crash Data - Calendar Year (CY)	CY 2019	CY 2020	CY 2021	CY 2022
Total Crashes	1587	1207	1254	1282
Fatal Crashes	4	7	9	4
Injury Crashes	651	433	447	419
Speed-Related Fatal Crashes	2	2	4	2
Percent of Speed-Related Fatal Crashes to Total Fatal Crashes	50%	29%	44%	50%
Speed-Related Injury Crashes	20	18	13	11
Percent of Speed-Related Injury Crashes to Total Injury Crashes	3%	4%	3%	3%

# Virginia House District 52 Unrestrained Crash Statistics

Report Generated May, 2023

	Count	Highest Time Period(s)	Highest Day(s)	Highest Month(s)
<b>Fatal Crashes</b>	<b>1</b>	<b>3:00pm - 5:59pm</b>	<b>Friday</b>	<b>November</b>
<b>Unrestrained Fatalities</b>	<b>1</b>	(100%)	(100%)	(100%)
<b>Serious Injury Crashes</b>	<b>11</b>	<b>3:00pm - 5:59pm 6:00pm - 8:59pm</b>	<b>Friday • Monday</b>	<b>May</b>
		(54%)	(36%)	(27%)



### House District 52 Unrestrained-Related Crashes

- |                    |                        |
|--------------------|------------------------|
| Interstate Crashes | Non-interstate Crashes |
| ● Fatal            | ● Fatal                |
| ⊕ Serious Injury   | ⊕ Serious Injury       |

The blue gradient represents the density of all unrestrained-related crashes.

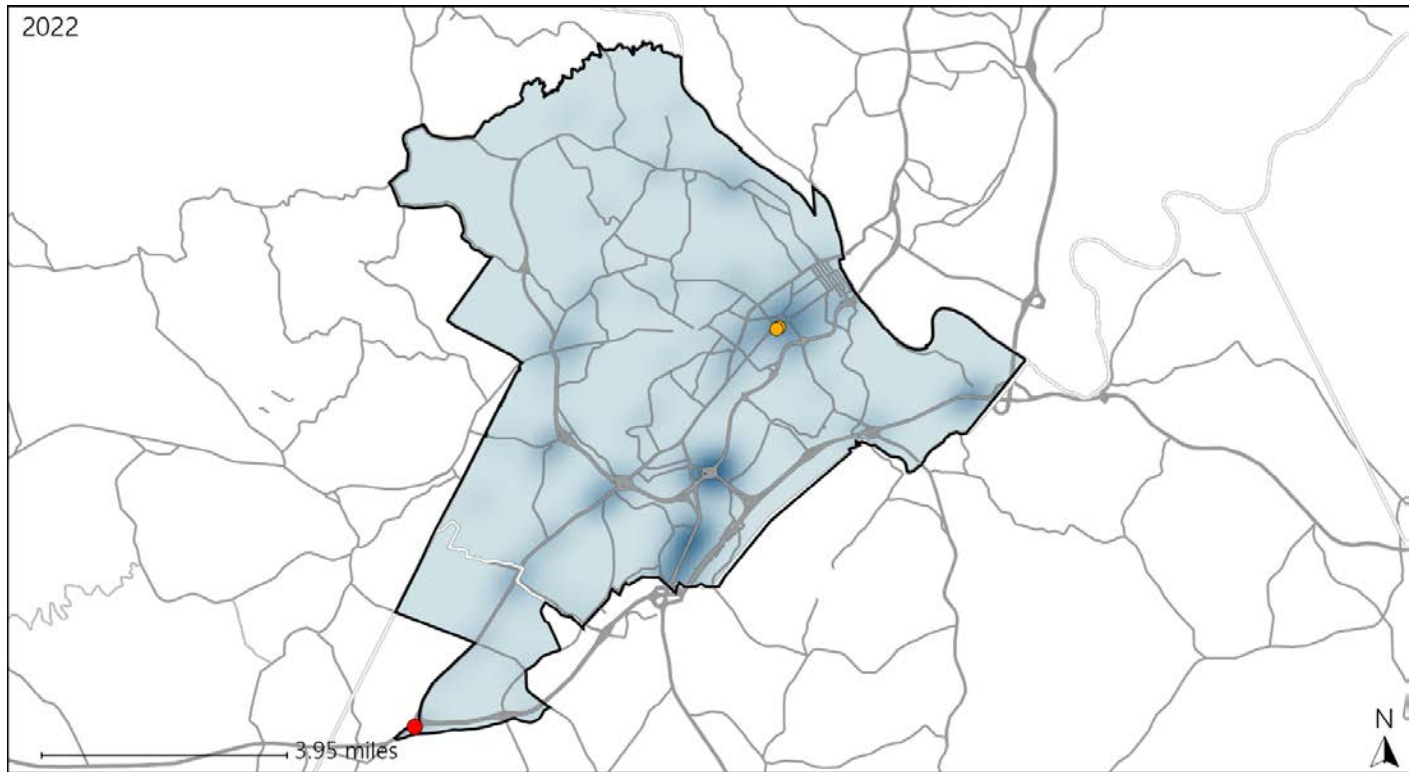


Available Crash Data - Calendar Year (CY)	CY 2019	CY 2020	CY 2021	CY 2022
<b>Total Crashes</b>	<b>1587</b>	<b>1207</b>	<b>1254</b>	<b>1282</b>
<b>Fatalities</b>	<b>5</b>	<b>7</b>	<b>9</b>	<b>4</b>
<b>Injuries</b>	<b>957</b>	<b>568</b>	<b>632</b>	<b>562</b>
<b>Unrestrained Fatalities</b>	<b>2</b>	<b>4</b>	<b>3</b>	<b>1</b>
<b>Percent of Unrestrained Fatalities to Total Fatalities</b>	<b>40%</b>	<b>57%</b>	<b>33%</b>	<b>25%</b>
<b>Unrestrained Injuries</b>	<b>43</b>	<b>46</b>	<b>52</b>	<b>40</b>
<b>Percent of Unrestrained Injuries to Total Injuries</b>	<b>4%</b>	<b>8%</b>	<b>8%</b>	<b>7%</b>

# Virginia House District 52 Distracted Driving Crash Statistics

Report Generated May, 2023

	Count	Highest Time Period(s)	Highest Day(s)	Highest Month(s)
<b>Fatal Crashes</b>	<b>1</b>	<b>Midnight - 2:59am</b>	<b>Saturday</b>	<b>February</b>
<b>Resulting Fatalities</b>	<b>1</b>	<b>(100%)</b>	<b>(100%)</b>	<b>(100%)</b>
<b>Serious Injury Crashes</b>	<b>2</b>	<b>9:00pm - 11:59pm</b> <b>Midnight - 2:59am</b>	<b>Friday • Tuesday</b>	<b>July • October</b>
		<b>(100%)</b>	<b>(100%)</b>	<b>(100%)</b>



## House District 52 Distracted Driving-Related Crashes

- |                    |                        |
|--------------------|------------------------|
| Interstate Crashes | Non-interstate Crashes |
| Fatal              | Fatal                  |
| Serious Injury     | Serious Injury         |

The blue gradient represents the density of all distracted driving-related crashes.



Available Crash Data - Calendar Year (CY)	CY 2019	CY 2020	CY 2021	CY 2022
Total Crashes	1587	1207	1254	1282
Fatal Crashes	4	7	9	4
Injury Crashes	651	433	447	419
Distracted Driving-Related Fatal Crashes	0	1	2	1
Percent of Distracted Driving-Related Fatal Crashes to Total Fatal Crashes	0%	14%	22%	25%
Distracted Driving-Related Injury Crashes	104	84	63	56
Percent of Distracted Driving-Related Injury Crashes to Total Injury Crashes	16%	19%	14%	13%