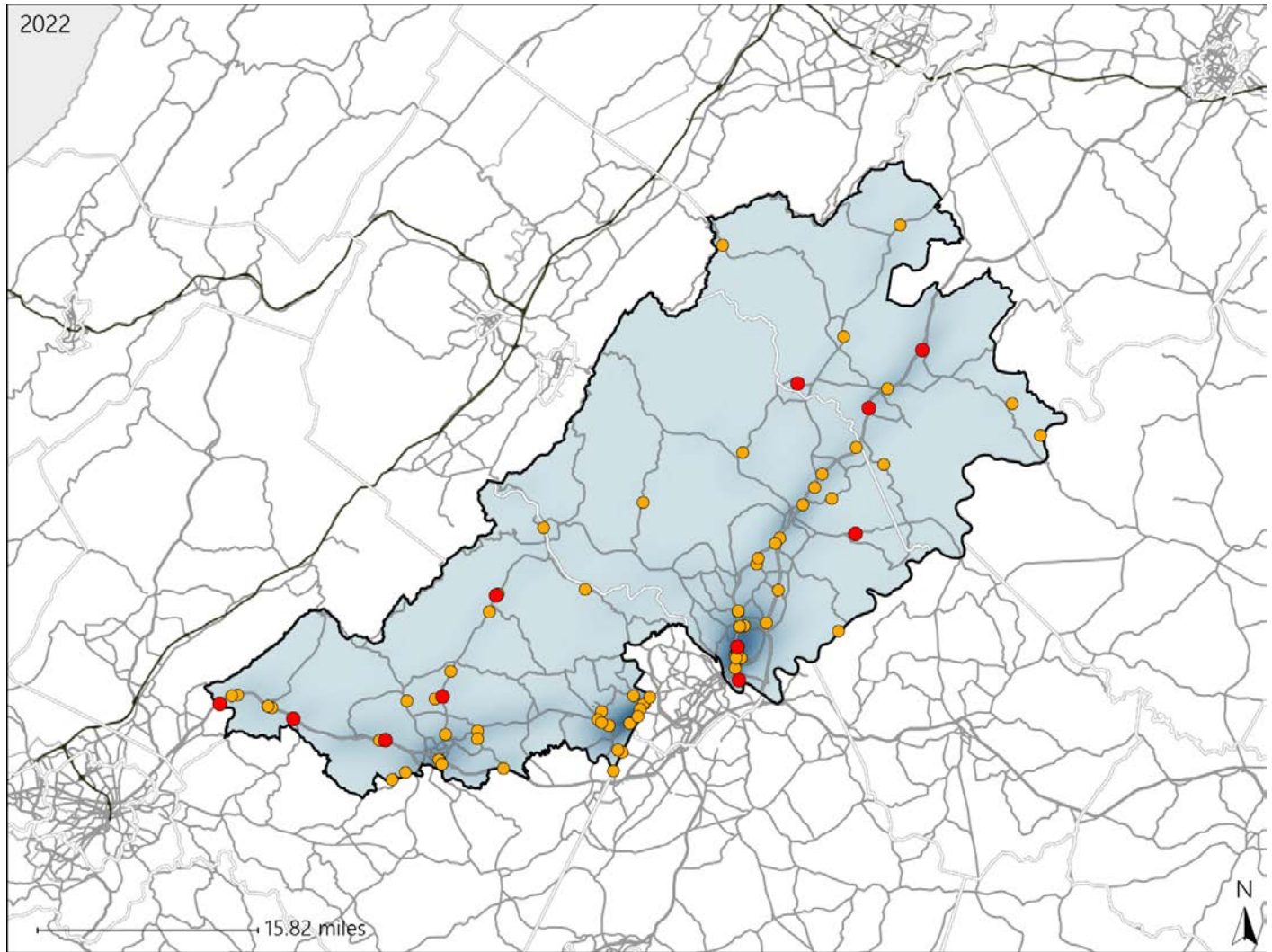


# Virginia House District 53 Crash Statistics

Report Generated May, 2023

	Count	Highest Time Period(s)	Highest Day(s)	Highest Month(s)
<b>Fatal Crashes</b>	<b>11</b>	<b>Midnight - 2:59am</b>	<b>Sunday</b>	<b>June</b>
<b>Resulting Fatalities</b>	<b>11</b>	(36%)	(55%)	(27%)
<b>Serious Injury Crashes</b>	<b>72</b>	<b>6:00pm - 8:59pm</b>	<b>Saturday</b>	<b>June</b>
		(22%)	(29%)	(14%)



## House District 53 Crashes

Interstate Crashes

- Fatal
- Serious Injury

Non-interstate Crashes

- Fatal
- Serious Injury

The blue gradient represents the density of all crashes.

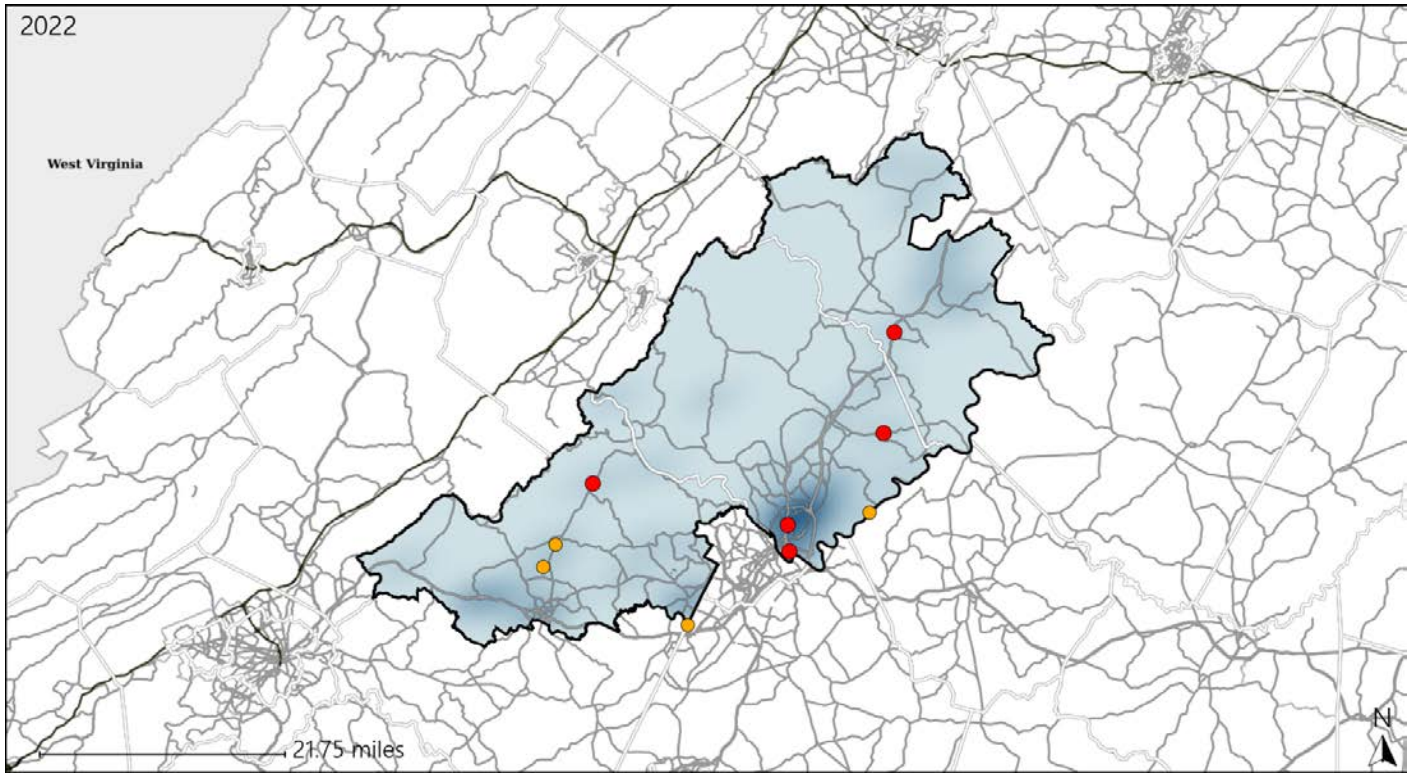


Available Crash Data - Calendar Year (CY)	CY 2019	CY 2020	CY 2021	CY 2022
Total Crashes	1255	1075	1041	1087
Fatal Crashes	15	12	18	11
Injury Crashes	355	344	322	259

# Virginia House District 53 Alcohol Crash Statistics

Report Generated May, 2023

	Count	Highest Time Period(s)	Highest Day(s)	Highest Month(s)
<b>Fatal Crashes</b>	<b>5</b>	<b>9:00pm - 11:59pm</b>	<b>Sunday</b>	<b>April • January</b>
<b>Resulting Fatalities</b>	<b>5</b>	<b>Midnight - 2:59am</b> (80%)	<b>(60%)</b>	<b>(40%)</b>
<b>Serious Injury Crashes</b>	<b>4</b>	<b>3:00am - 5:59am</b> <b>6:00am - 8:59am</b> (50%)	<b>Saturday</b> (50%)	<b>November</b> (50%)



## House District 53 Alcohol-Related Crashes

Interstate Crashes                      Non-interstate Crashes  
 ● Fatal                                      ● Fatal  
 ⊕ Serious Injury                              ⊕ Serious Injury

The blue gradient represents the density of all alcohol-related crashes.

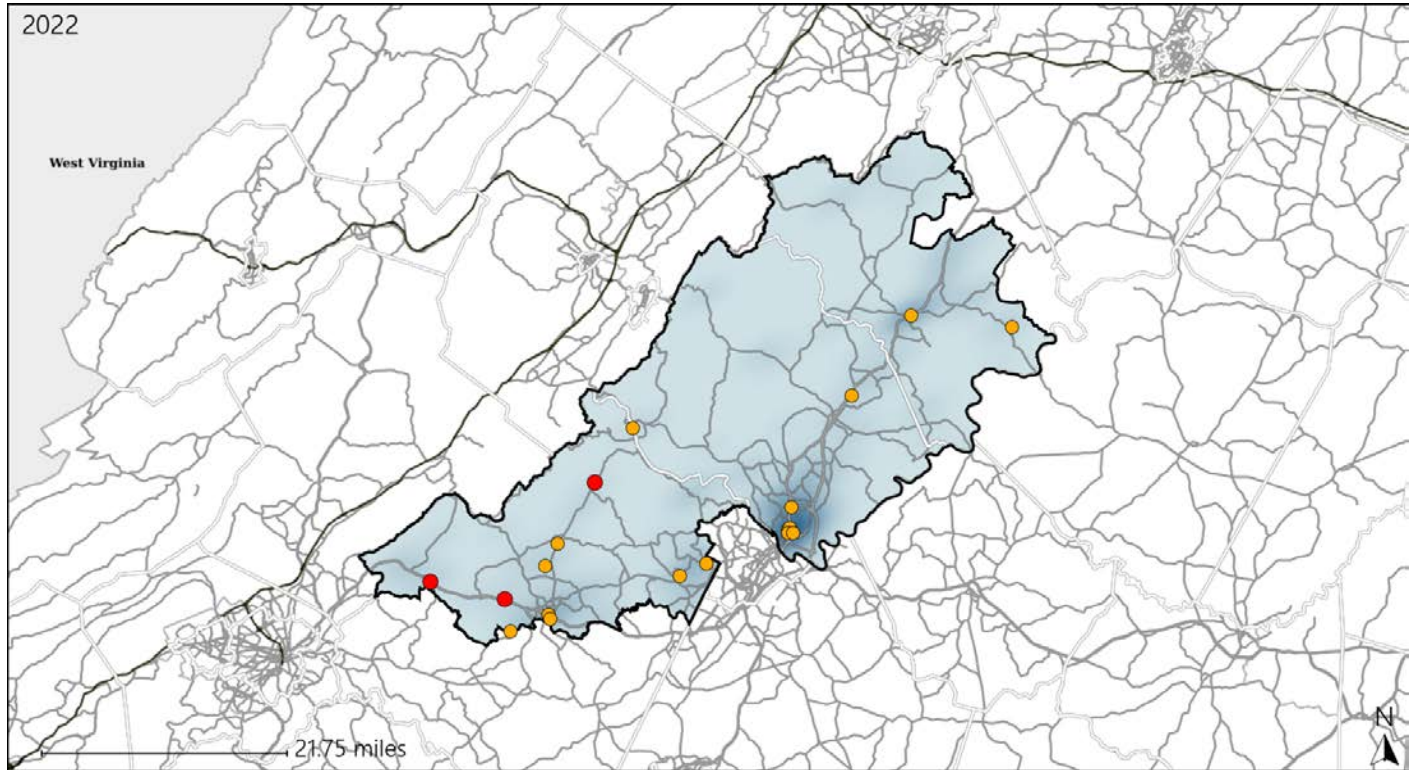


Available Crash Data - Calendar Year (CY)	CY 2019	CY 2020	CY 2021	CY 2022
Total Crashes	1255	1075	1041	1087
Fatal Crashes	15	12	18	11
Injury Crashes	355	344	322	259
Alcohol-Related Fatal Crashes	3	5	4	5
Percent of Alcohol-Related Fatal Crashes to Total Fatal Crashes	20%	42%	22%	45%
Alcohol-Related Injury Crashes	33	35	23	16
Percent of Alcohol-Related Injury Crashes to Total Injury Crashes	9%	10%	7%	6%

# Virginia House District 53 Speed Crash Statistics

Report Generated May, 2023

	Count	Highest Time Period(s)	Highest Day(s)	Highest Month(s)
<b>Fatal Crashes</b>	<b>3</b>	3:00am - 5:59am	Tuesday	June
<b>Resulting Fatalities</b>	<b>3</b>	3:00pm - 5:59pm (66%)	(67%)	(67%)
<b>Serious Injury Crashes</b>	<b>16</b>	6:00pm - 8:59pm (38%)	Saturday (44%)	April - August (24%)



### House District 53 Speed-Related Crashes

Interstate Crashes                      Non-interstate Crashes  
 ● Fatal                                      ● Fatal  
 ● Serious Injury                          ● Serious Injury

The blue gradient represents the density of all speed-related crashes.

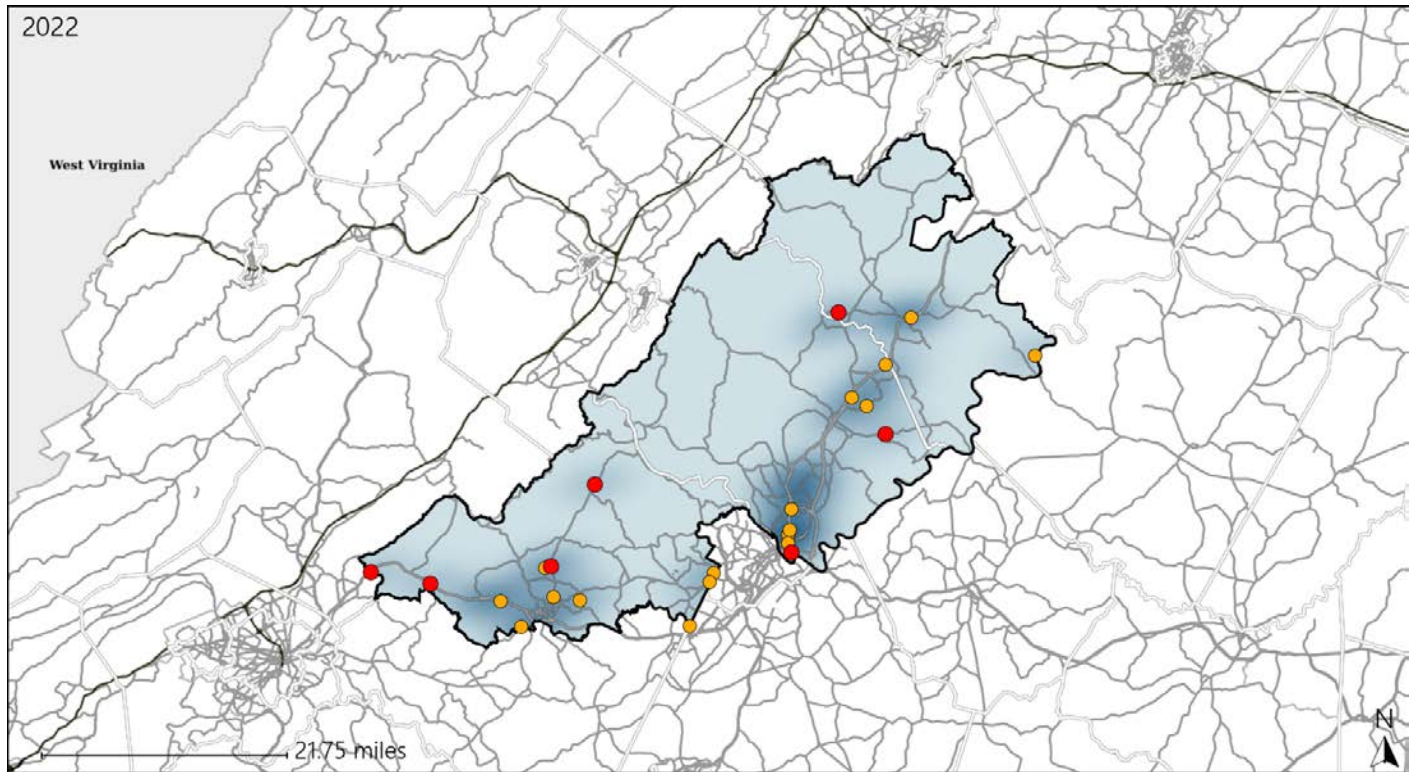


Available Crash Data - Calendar Year (CY)	CY 2019	CY 2020	CY 2021	CY 2022
Total Crashes	1255	1075	1041	1087
Fatal Crashes	15	12	18	11
Injury Crashes	355	344	322	259
Speed-Related Fatal Crashes	6	6	5	3
Percent of Speed-Related Fatal Crashes to Total Fatal Crashes	40%	50%	28%	27%
Speed-Related Injury Crashes	82	84	80	58
Percent of Speed-Related Injury Crashes to Total Injury Crashes	23%	24%	25%	22%

# Virginia House District 53 Unrestrained Crash Statistics

Report Generated May, 2023

	Count	Highest Time Period(s)	Highest Day(s)	Highest Month(s)
<b>Fatal Crashes</b>	<b>7</b>	<b>Midnight - 2:59am</b>	<b>Sunday</b>	<b>December • January</b>
<b>Unrestrained Fatalities</b>	<b>7</b>	(57%)	(71%)	(28%)
<b>Serious Injury Crashes</b>	<b>17</b>	<b>6:00am - 8:59am Noon - 2:59pm</b>	<b>Saturday</b>	<b>November</b>
		(36%)	(29%)	(24%)



### House District 53 Unrestrained-Related Crashes

- |                    |                        |
|--------------------|------------------------|
| Interstate Crashes | Non-interstate Crashes |
| ● Fatal            | ● Fatal                |
| ⊕ Serious Injury   | ⊕ Serious Injury       |

The blue gradient represents the density of all unrestrained-related crashes.

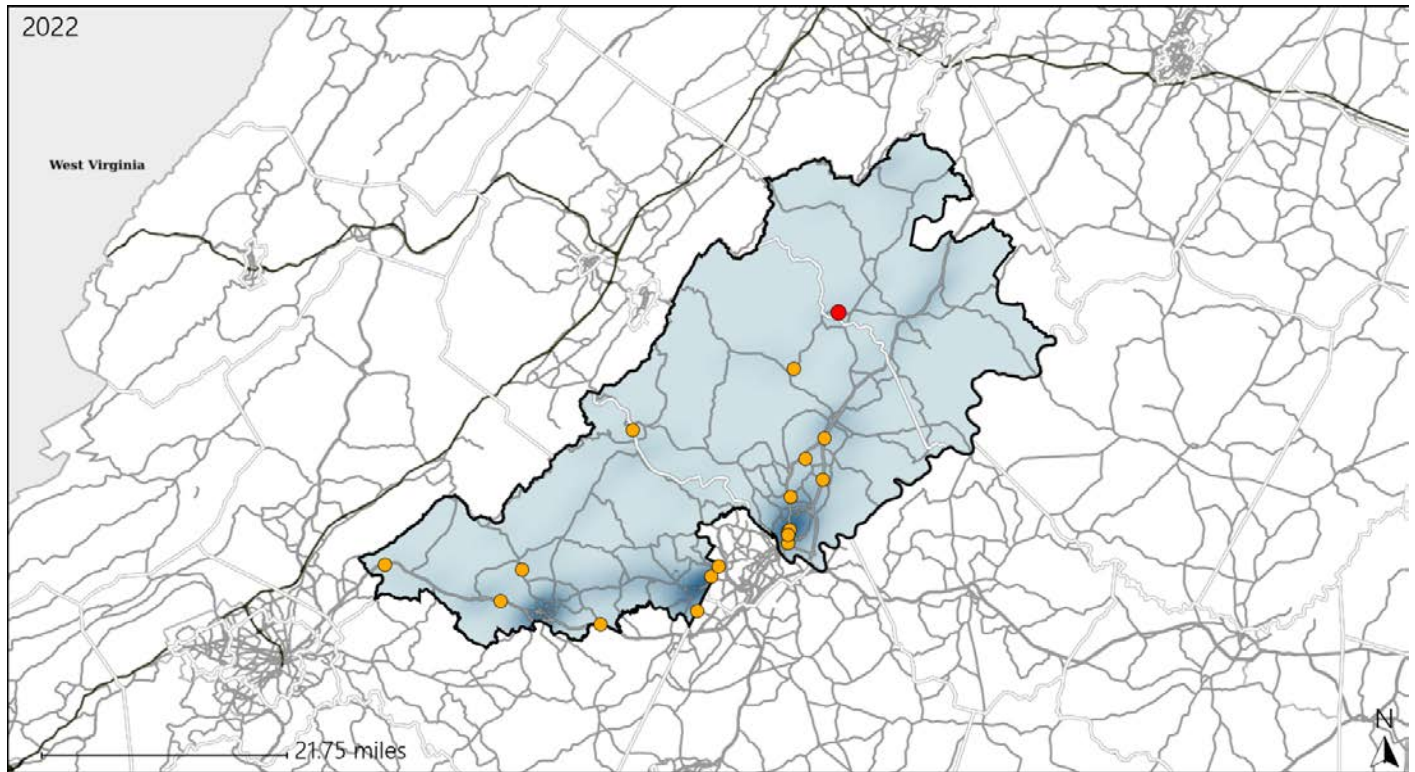


Available Crash Data - Calendar Year (CY)	CY 2019	CY 2020	CY 2021	CY 2022
Total Crashes	1255	1075	1041	1087
Fatalities	15	12	18	11
Injuries	516	500	492	399
Unrestrained Fatalities	5	4	8	7
Percent of Unrestrained Fatalities to Total Fatalities	33%	33%	44%	64%
Unrestrained Injuries	37	67	62	40
Percent of Unrestrained Injuries to Total Injuries	7%	13%	13%	10%

# Virginia House District 53 Distracted Driving Crash Statistics

Report Generated May, 2023

	Count	Highest Time Period(s)	Highest Day(s)	Highest Month(s)
<b>Fatal Crashes</b>	<b>1</b>	<b>9:00pm - 11:59pm</b>	<b>Sunday</b>	<b>May</b>
<b>Resulting Fatalities</b>	<b>1</b>	(100%)	(100%)	(100%)
<b>Serious Injury Crashes</b>	<b>17</b>	<b>6:00am - 8:59am</b> <b>6:00pm - 8:59pm</b>	<b>Saturday</b>	<b>July • June</b>
		(48%)	(29%)	(36%)



## House District 53 Distracted Driving-Related Crashes

- |  |  |
|--|--|
| Interstate Crashes                                   | Non-interstate Crashes                               |
| <span style="color: red;">●</span> Fatal             | <span style="color: red;">●</span> Fatal             |
| <span style="color: orange;">●</span> Serious Injury | <span style="color: orange;">●</span> Serious Injury |

The blue gradient represents the density of all distracted driving-related crashes.



Available Crash Data - Calendar Year (CY)	CY 2019	CY 2020	CY 2021	CY 2022
Total Crashes	1255	1075	1041	1087
Fatal Crashes	15	12	18	11
Injury Crashes	355	344	322	259
Distracted Driving-Related Fatal Crashes	5	2	4	1
Percent of Distracted Driving-Related Fatal Crashes to Total Fatal Crashes	33%	17%	22%	9%
Distracted Driving-Related Injury Crashes	91	61	78	56
Percent of Distracted Driving-Related Injury Crashes to Total Injury Crashes	26%	18%	24%	22%