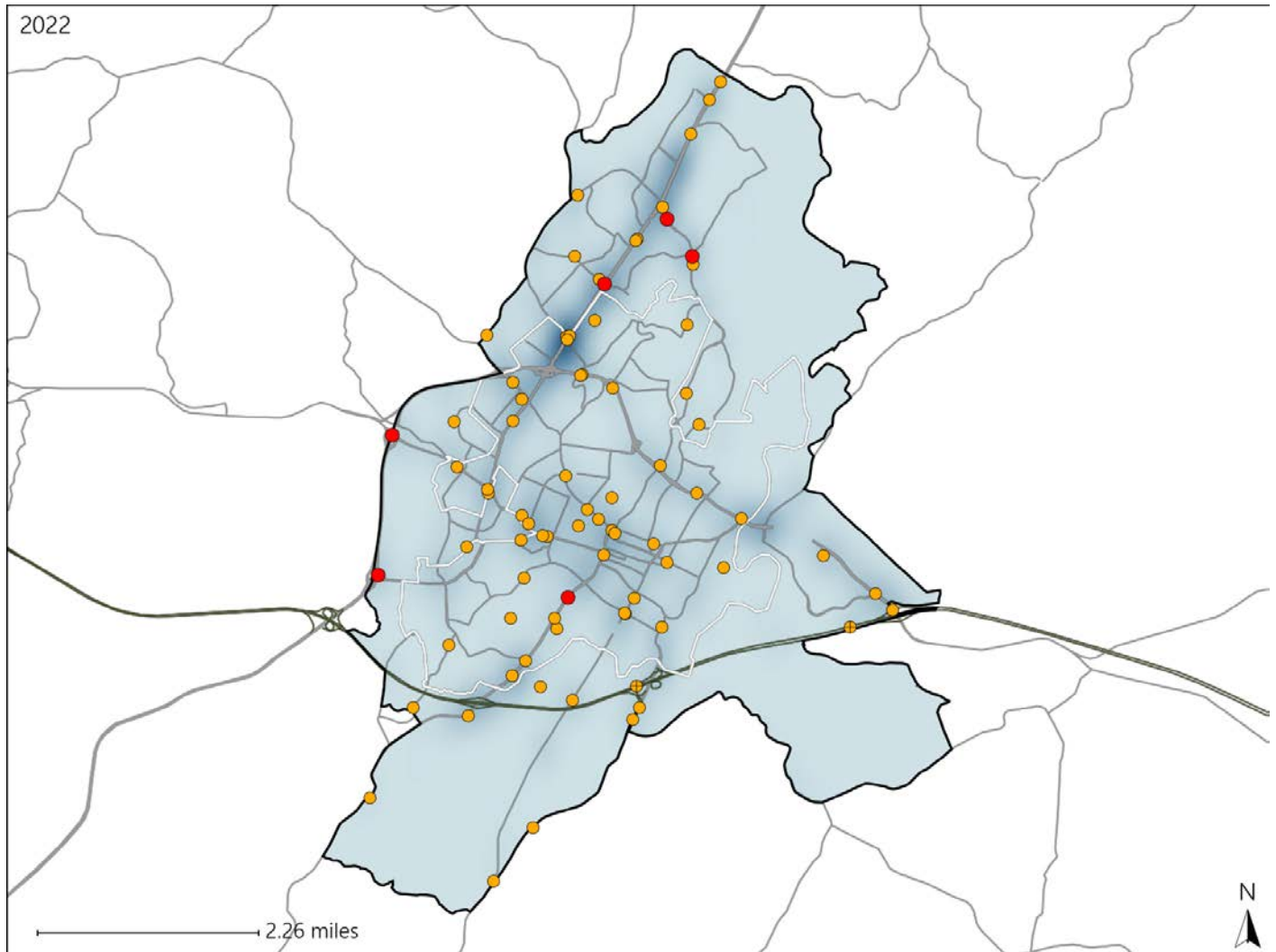


Virginia House District 54 Crash Statistics

Report Generated May, 2023

	Count	Highest Time Period(s)	Highest Day(s)	Highest Month(s)
Fatal Crashes	6	9:00pm - 11:59pm	Sunday	May
Resulting Fatalities	6	(67%)	(50%)	(33%)
Serious Injury Crashes	74	3:00pm - 5:59pm 6:00pm - 8:59pm	Saturday	August - October
		(40%)	(26%)	(30%)



House District 54 Crashes

Interstate Crashes

- Fatal
- Serious Injury

Non-interstate Crashes

- Fatal
- Serious Injury

The blue gradient represents the density of all crashes.

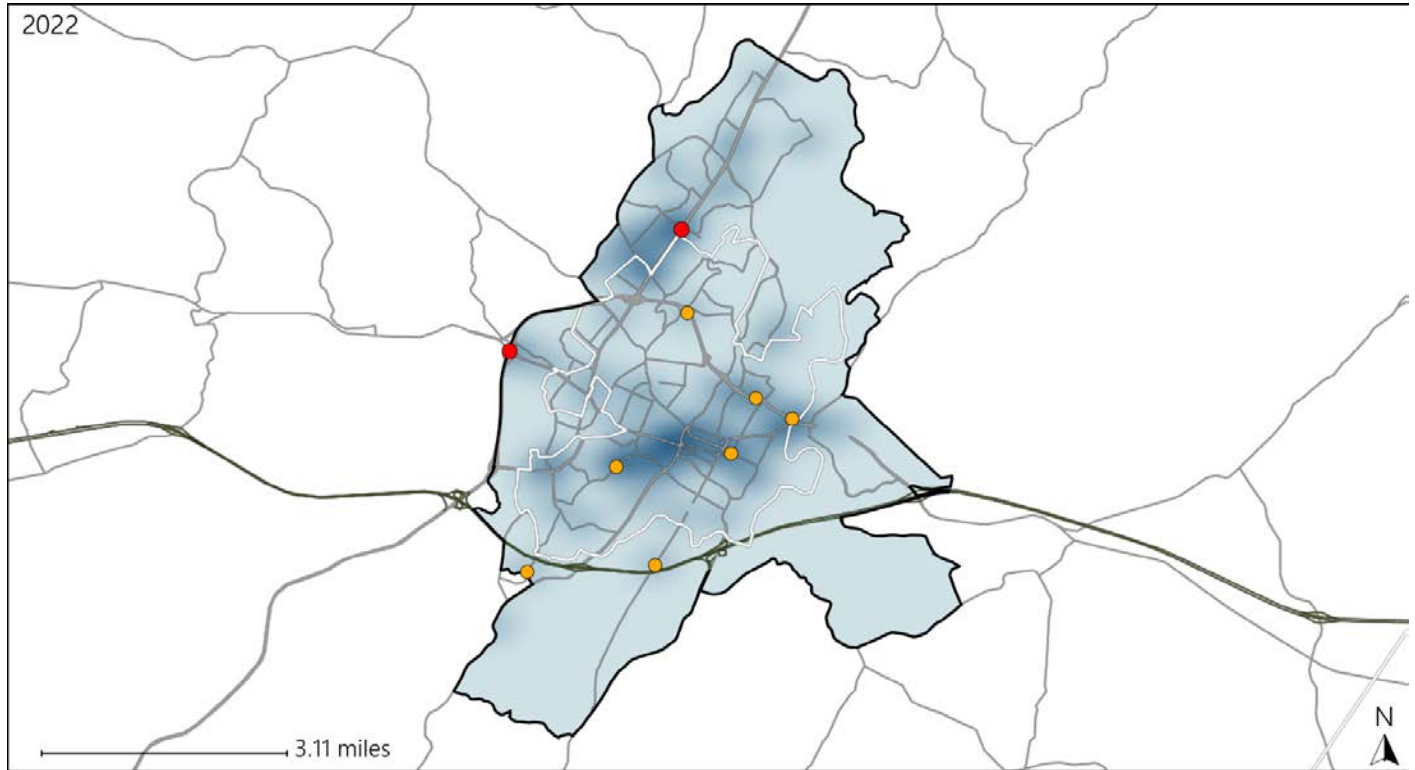


Available Crash Data - Calendar Year (CY)	CY 2019	CY 2020	CY 2021	CY 2022
Total Crashes	1369	998	1130	1347
Fatal Crashes	6	9	6	6
Injury Crashes	523	478	500	629

Virginia House District 54 Alcohol Crash Statistics

Report Generated May, 2023

	Count	Highest Time Period(s)	Highest Day(s)	Highest Month(s)
Fatal Crashes	2	3:00pm - 5:59pm	Sunday	May • October
Resulting Fatalities	2	9:00pm - 11:59pm (100%)	(100%)	(100%)
Serious Injury Crashes	7	6:00pm - 8:59pm (57%)	Saturday (57%)	August • January (58%)



House District 54 Alcohol-Related Crashes

Interstate Crashes Non-interstate Crashes
 ● Fatal ● Fatal
 ⊕ Serious Injury ⊕ Serious Injury

The blue gradient represents the density of all alcohol-related crashes.

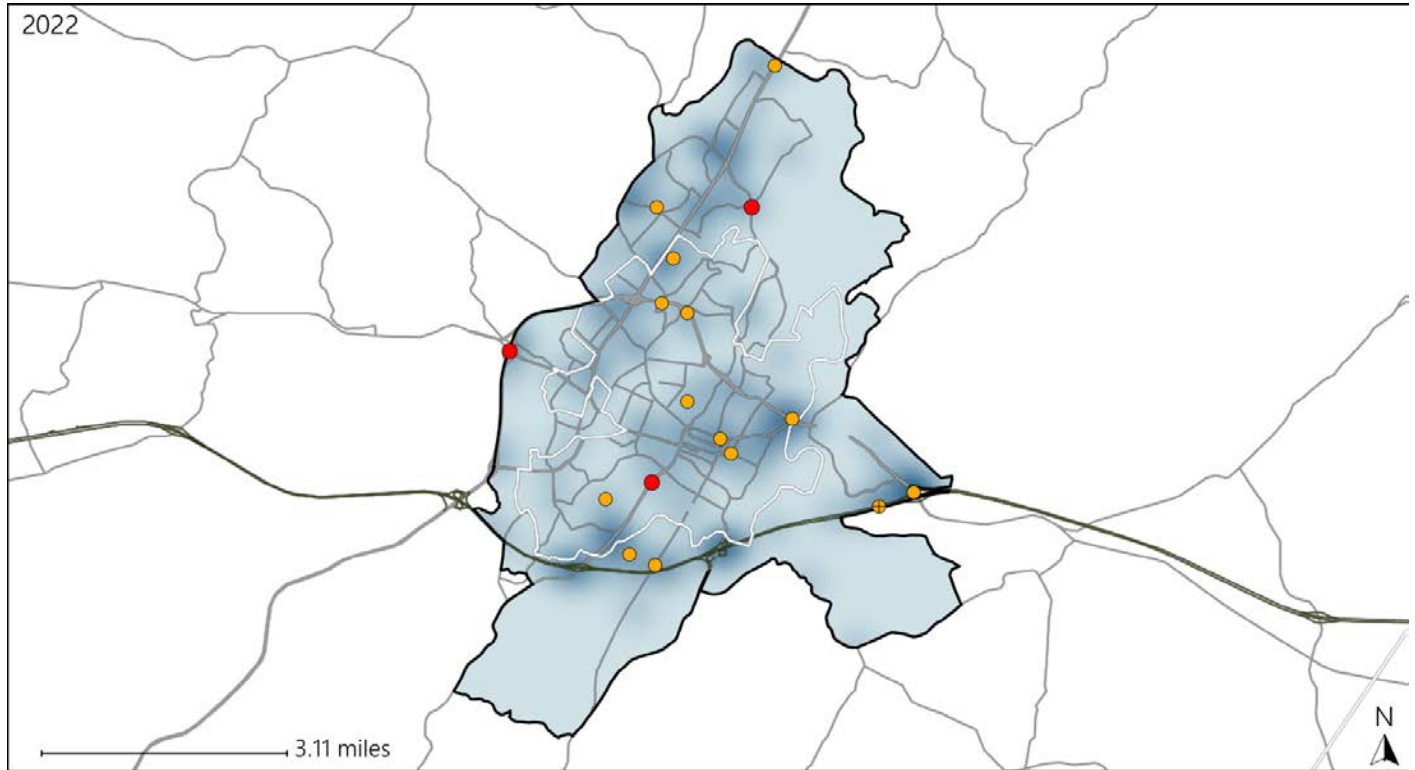


Available Crash Data - Calendar Year (CY)	CY 2019	CY 2020	CY 2021	CY 2022
Total Crashes	1369	998	1130	1347
Fatal Crashes	6	9	6	6
Injury Crashes	523	478	500	629
Alcohol-Related Fatal Crashes	3	3	3	2
Percent of Alcohol-Related Fatal Crashes to Total Fatal Crashes	50%	33%	50%	33%
Alcohol-Related Injury Crashes	34	47	34	36
Percent of Alcohol-Related Injury Crashes to Total Injury Crashes	7%	10%	7%	6%

Virginia House District 54 Speed Crash Statistics

Report Generated May, 2023

	Count	Highest Time Period(s)	Highest Day(s)	Highest Month(s)
Fatal Crashes	3	3:00pm - 5:59pm	Monday • Saturday	January • May
Resulting Fatalities	3	9:00am - 11:59am (66%)	(66%)	(66%)
Serious Injury Crashes	14	6:00pm - 8:59pm (36%)	Saturday (29%)	October (29%)



House District 54 Speed-Related Crashes

Interstate Crashes Non-interstate Crashes
 ● Fatal ● Fatal
 ⊕ Serious Injury ⊕ Serious Injury

The blue gradient represents the density of all speed-related crashes.

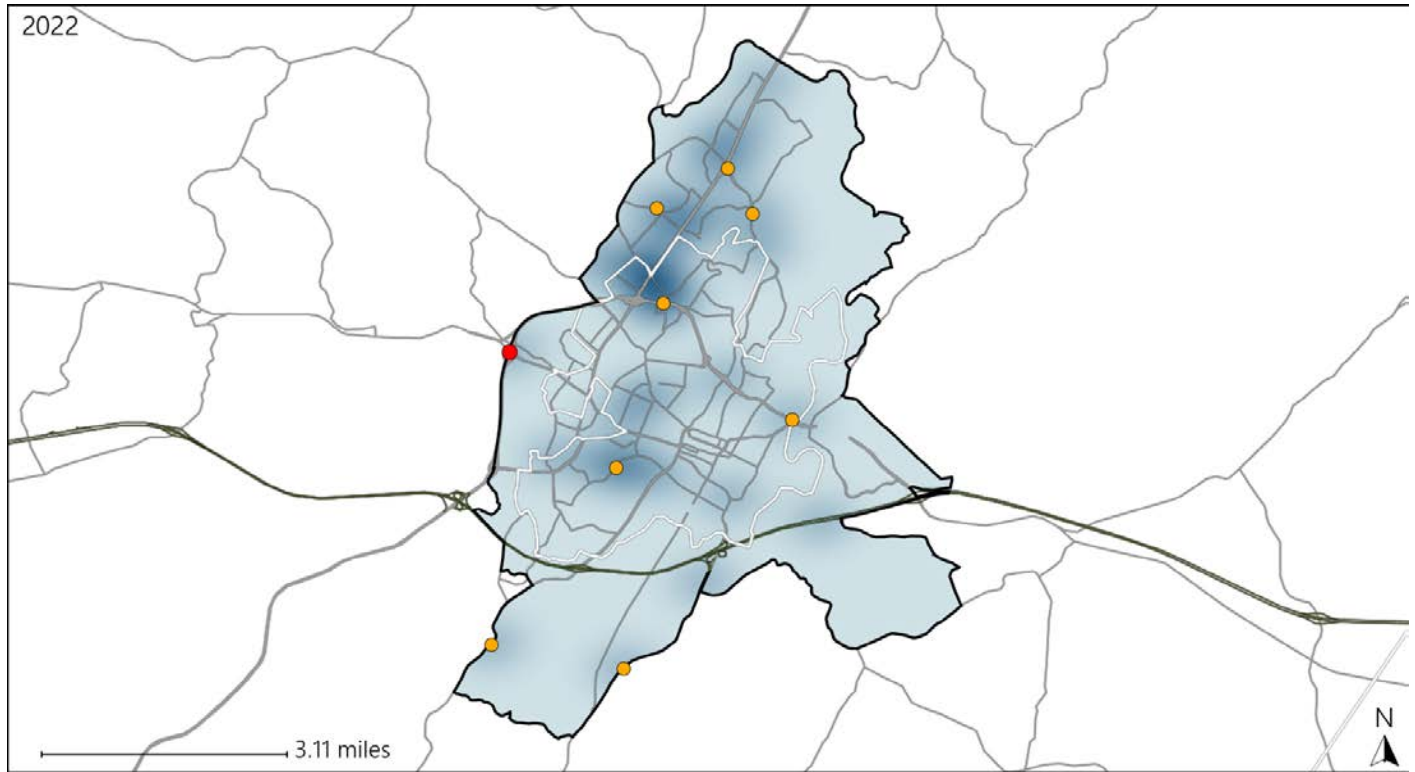


Available Crash Data - Calendar Year (CY)	CY 2019	CY 2020	CY 2021	CY 2022
Total Crashes	1369	998	1130	1347
Fatal Crashes	6	9	6	6
Injury Crashes	523	478	500	629
Speed-Related Fatal Crashes	2	3	1	3
Percent of Speed-Related Fatal Crashes to Total Fatal Crashes	33%	33%	17%	50%
Speed-Related Injury Crashes	55	60	48	70
Percent of Speed-Related Injury Crashes to Total Injury Crashes	11%	13%	10%	11%

Virginia House District 54 Unrestrained Crash Statistics

Report Generated May, 2023

	Count	Highest Time Period(s)	Highest Day(s)	Highest Month(s)
Fatal Crashes	1	3:00pm - 5:59pm	Sunday	October
Unrestrained Fatalities	1	(100%)	(100%)	(100%)
Serious Injury Crashes	8	Midnight - 2:59am	Friday • Sunday	June • October
		(38%)	(50%)	(50%)



House District 54 Unrestrained-Related Crashes

Interstate Crashes

- Fatal
- Serious Injury

Non-interstate Crashes

- Fatal
- Serious Injury

The blue gradient represents the density of all unrestrained-related crashes.

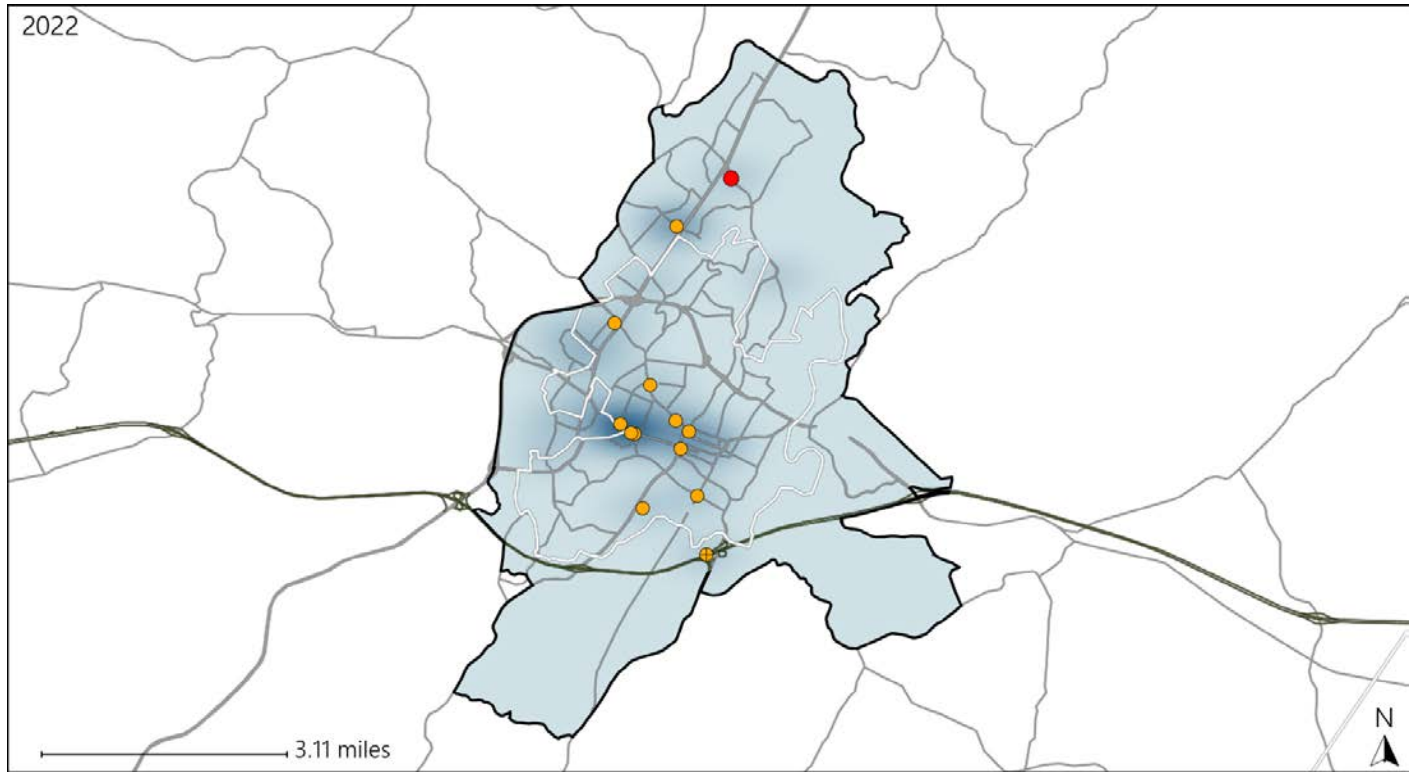


Available Crash Data - Calendar Year (CY)	CY 2019	CY 2020	CY 2021	CY 2022
Total Crashes	1369	998	1130	1347
Fatalities	6	10	7	6
Injuries	726	681	770	1003
Unrestrained Fatalities	1	3	3	1
Percent of Unrestrained Fatalities to Total Fatalities	17%	30%	43%	17%
Unrestrained Injuries	33	33	21	30
Percent of Unrestrained Injuries to Total Injuries	5%	5%	3%	3%

Virginia House District 54 Pedestrian Crash Statistics

Report Generated May, 2023

	Count	Highest Time Period(s)	Highest Day(s)	Highest Month(s)
Fatal Crashes	1	9:00pm - 11:59pm	Sunday	June
Pedestrian Fatalities	1	(100%)	(100%)	(100%)
Serious Injury Crashes	12	Noon - 2:59pm	Saturday	April + November
		(25%)	(33%)	(34%)



House District 54 Pedestrian-Related Crashes

- | | |
|--------------------|------------------------|
| Interstate Crashes | Non-interstate Crashes |
| Fatal | Fatal |
| Serious Injury | Serious Injury |

The blue gradient represents the density of all pedestrian-related crashes.

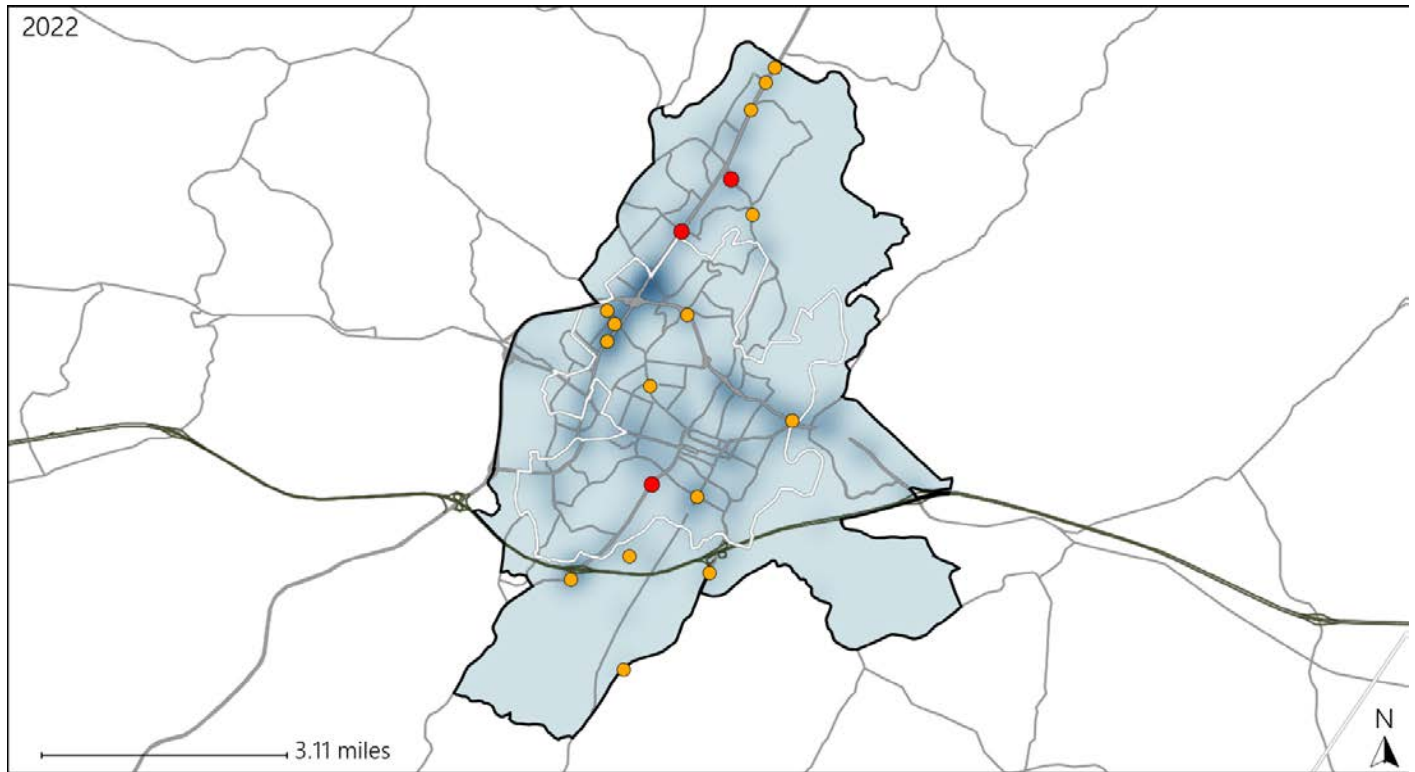


Available Crash Data - Calendar Year (CY)	CY 2019	CY 2020	CY 2021	CY 2022
Total Crashes	1369	998	1130	1347
Fatal Crashes	6	9	6	6
Injury Crashes	523	478	500	629
Pedestrian-Related Fatal Crashes	2	3	2	1
Percent of Pedestrian-Related Fatal Crashes to Total Fatal Crashes	33%	33%	33%	17%
Pedestrian-Related Injury Crashes	23	21	17	27
Percent of Pedestrian-Related Injury Crashes to Total Injury Crashes	4%	4%	3%	4%

Virginia House District 54 Distracted Driving Crash Statistics

Report Generated May, 2023

	Count	Highest Time Period(s)	Highest Day(s)	Highest Month(s)
Fatal Crashes	3	9:00pm - 11:59pm	Sunday	January - June
Resulting Fatalities	3	(100%)	(67%)	(66%)
Serious Injury Crashes	15	3:00pm - 5:59pm Noon - 2:59pm	Sunday	December
		(54%)	(33%)	(27%)



House District 54 Distracted Driving-Related Crashes

- | | |
|--|--|
| Interstate Crashes | Non-interstate Crashes |
| ● Fatal | ● Fatal |
| ● Serious Injury | ● Serious Injury |

The blue gradient represents the density of all distracted driving-related crashes.



Available Crash Data - Calendar Year (CY)	CY 2019	CY 2020	CY 2021	CY 2022
Total Crashes	1369	998	1130	1347
Fatal Crashes	6	9	6	6
Injury Crashes	523	478	500	629
Distracted Driving-Related Fatal Crashes	3	3	1	3
Percent of Distracted Driving-Related Fatal Crashes to Total Fatal Crashes	50%	33%	17%	50%
Distracted Driving-Related Injury Crashes	147	105	104	105
Percent of Distracted Driving-Related Injury Crashes to Total Injury Crashes	28%	22%	21%	17%