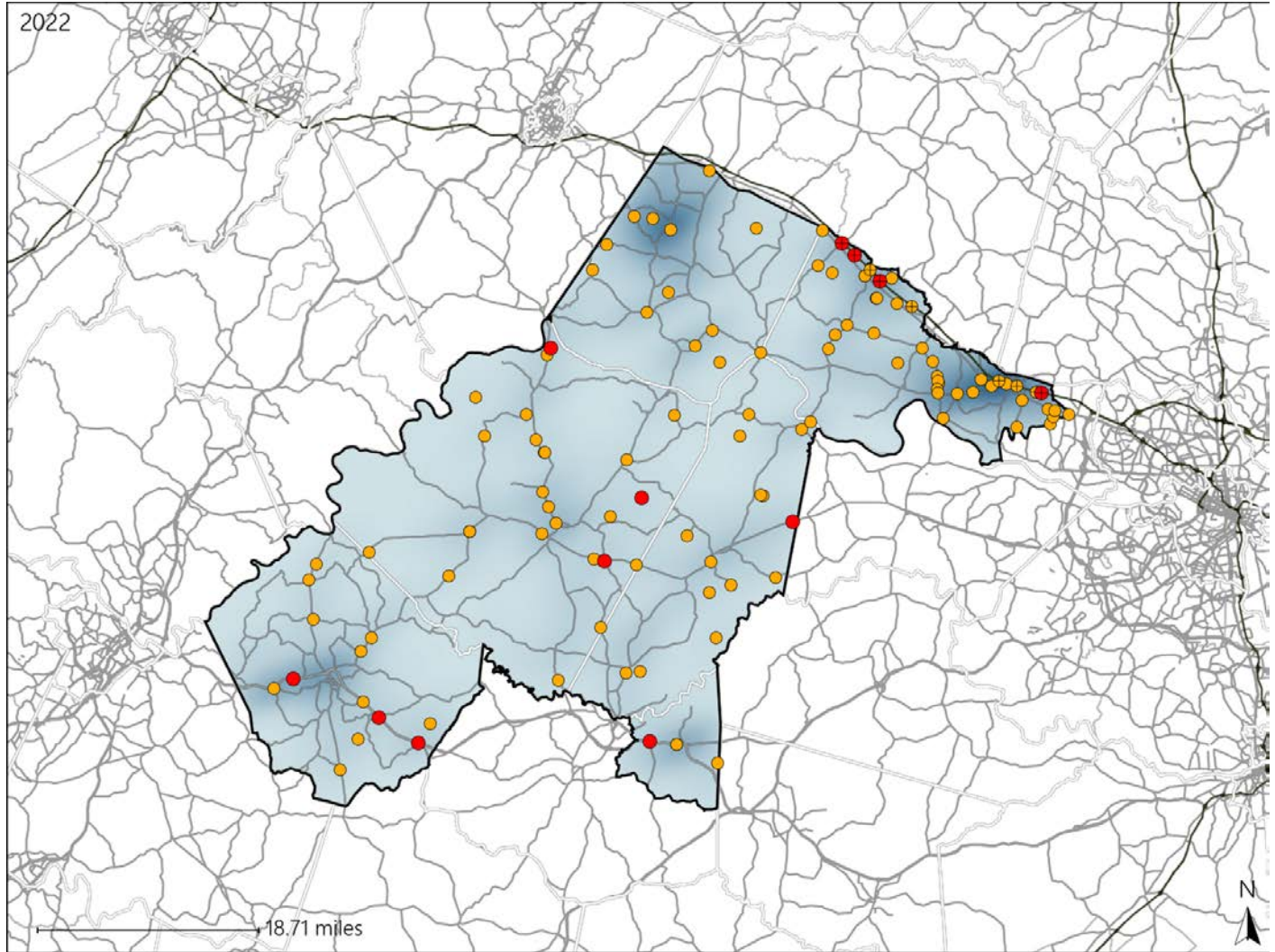


Virginia House District 56 Crash Statistics

Report Generated May, 2023

	Count	Highest Time Period(s)	Highest Day(s)	Highest Month(s)
Fatal Crashes	12	Noon - 2:59pm	Sunday	February
Resulting Fatalities	14	(33%)	(33%)	(25%)
Serious Injury Crashes	103	3:00pm - 5:59pm	Saturday	June + March
		(20%)	(22%)	(24%)



House District 56 Crashes

Interstate Crashes

- Fatal
- Serious Injury

Non-interstate Crashes

- Fatal
- Serious Injury

The blue gradient represents the density of all crashes.

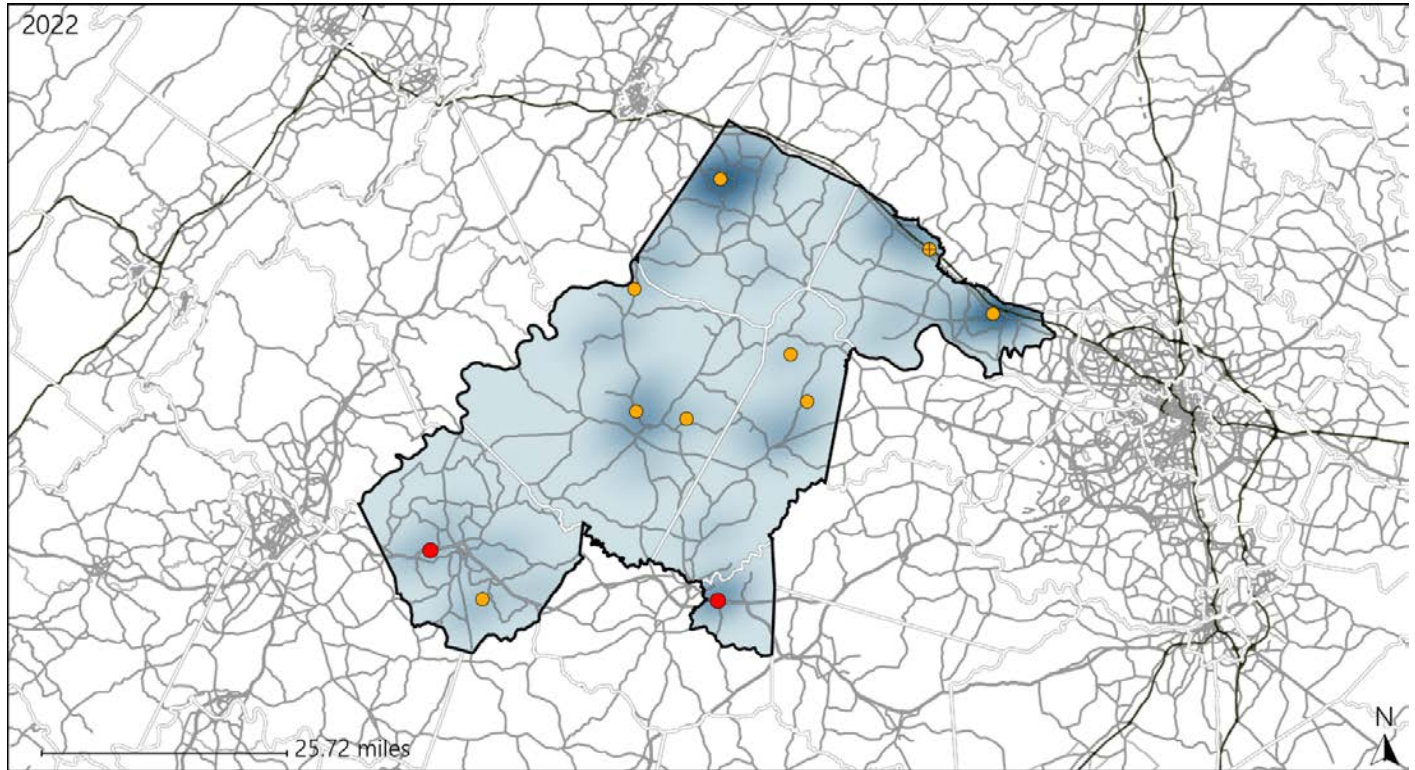


Available Crash Data - Calendar Year (CY)	CY 2019	CY 2020	CY 2021	CY 2022
Total Crashes	1203	988	1103	1083
Fatal Crashes	17	13	20	12
Injury Crashes	419	351	356	340

Virginia House District 56 Alcohol Crash Statistics

Report Generated May, 2023

	Count	Highest Time Period(s)	Highest Day(s)	Highest Month(s)
Fatal Crashes	2	6:00pm - 8:59pm	Monday • Sunday	December • May
Resulting Fatalities	2	Noon - 2:59pm (100%)	(100%)	(100%)
Serious Injury Crashes	9	9:00pm - 11:59pm (44%)	Saturday (78%)	April • August (22%)



House District 56 Alcohol-Related Crashes

Interstate Crashes Non-interstate Crashes
 ● Fatal ● Fatal
 ⊕ Serious Injury ⊕ Serious Injury

The blue gradient represents the density of all alcohol-related crashes.

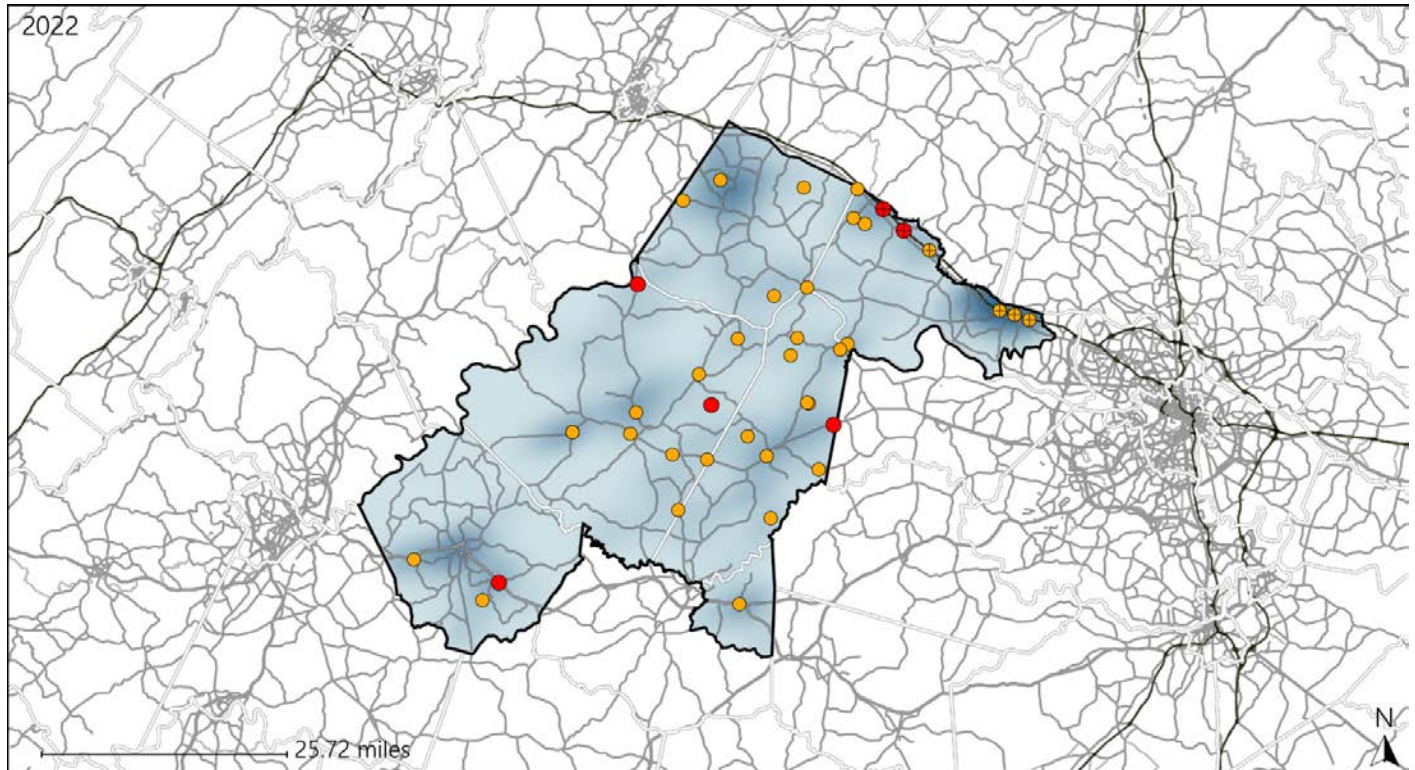


Available Crash Data - Calendar Year (CY)	CY 2019	CY 2020	CY 2021	CY 2022
Total Crashes	1203	988	1103	1083
Fatal Crashes	17	13	20	12
Injury Crashes	419	351	356	340
Alcohol-Related Fatal Crashes	8	6	6	2
Percent of Alcohol-Related Fatal Crashes to Total Fatal Crashes	47%	46%	30%	17%
Alcohol-Related Injury Crashes	51	32	36	24
Percent of Alcohol-Related Injury Crashes to Total Injury Crashes	12%	9%	10%	7%

Virginia House District 56 Speed Crash Statistics

Report Generated May, 2023

	Count	Highest Time Period(s)	Highest Day(s)	Highest Month(s)
Fatal Crashes	6	3:00pm - 5:59pm	Saturday • Sunday	June
Resulting Fatalities	7	(33%)	(66%)	(33%)
Serious Injury Crashes	35	3:00pm - 5:59pm	Saturday	March
		(23%)	(26%)	(17%)



House District 56 Speed-Related Crashes

Interstate Crashes Non-interstate Crashes
 ● Fatal ● Fatal
 ● Serious Injury ● Serious Injury

The blue gradient represents the density of all speed-related crashes.

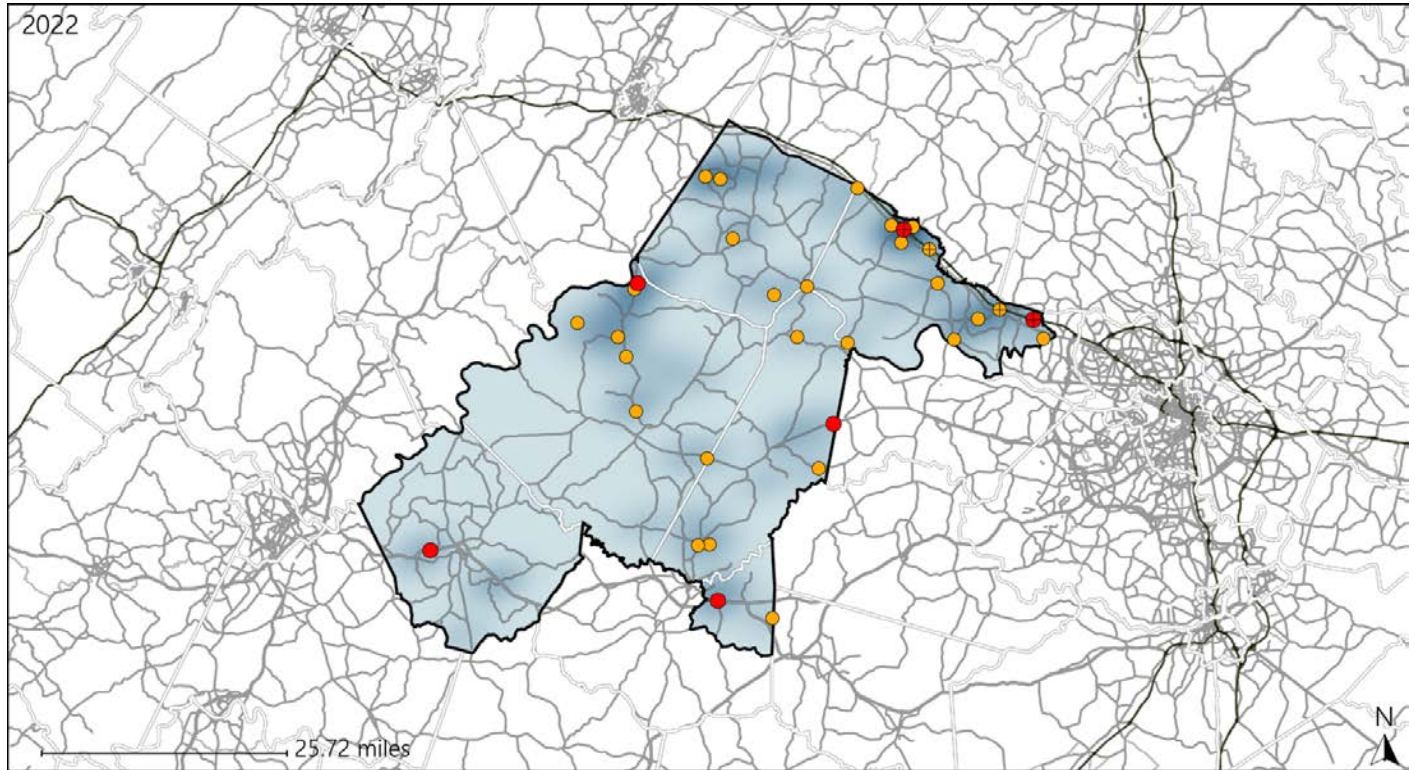


Available Crash Data - Calendar Year (CY)	CY 2019	CY 2020	CY 2021	CY 2022
Total Crashes	1203	988	1103	1083
Fatal Crashes	17	13	20	12
Injury Crashes	419	351	356	340
Speed-Related Fatal Crashes	6	6	12	6
Percent of Speed-Related Fatal Crashes to Total Fatal Crashes	35%	46%	60%	50%
Speed-Related Injury Crashes	96	82	93	89
Percent of Speed-Related Injury Crashes to Total Injury Crashes	23%	23%	26%	26%

Virginia House District 56 Unrestrained Crash Statistics

Report Generated May, 2023

	Count	Highest Time Period(s)	Highest Day(s)	Highest Month(s)
Fatal Crashes	6	6:00pm - 8:59pm	Sunday	June
Unrestrained Fatalities	7	Noon - 2:59pm (66%)	(50%)	(33%)
Serious Injury Crashes	27	3:00pm - 5:59pm (19%)	Friday • Monday (44%)	March (19%)



House District 56 Unrestrained-Related Crashes

- | | |
|--------------------|------------------------|
| Interstate Crashes | Non-interstate Crashes |
| ● Fatal | ● Fatal |
| ● Serious Injury | ● Serious Injury |

The blue gradient represents the density of all unrestrained-related crashes.

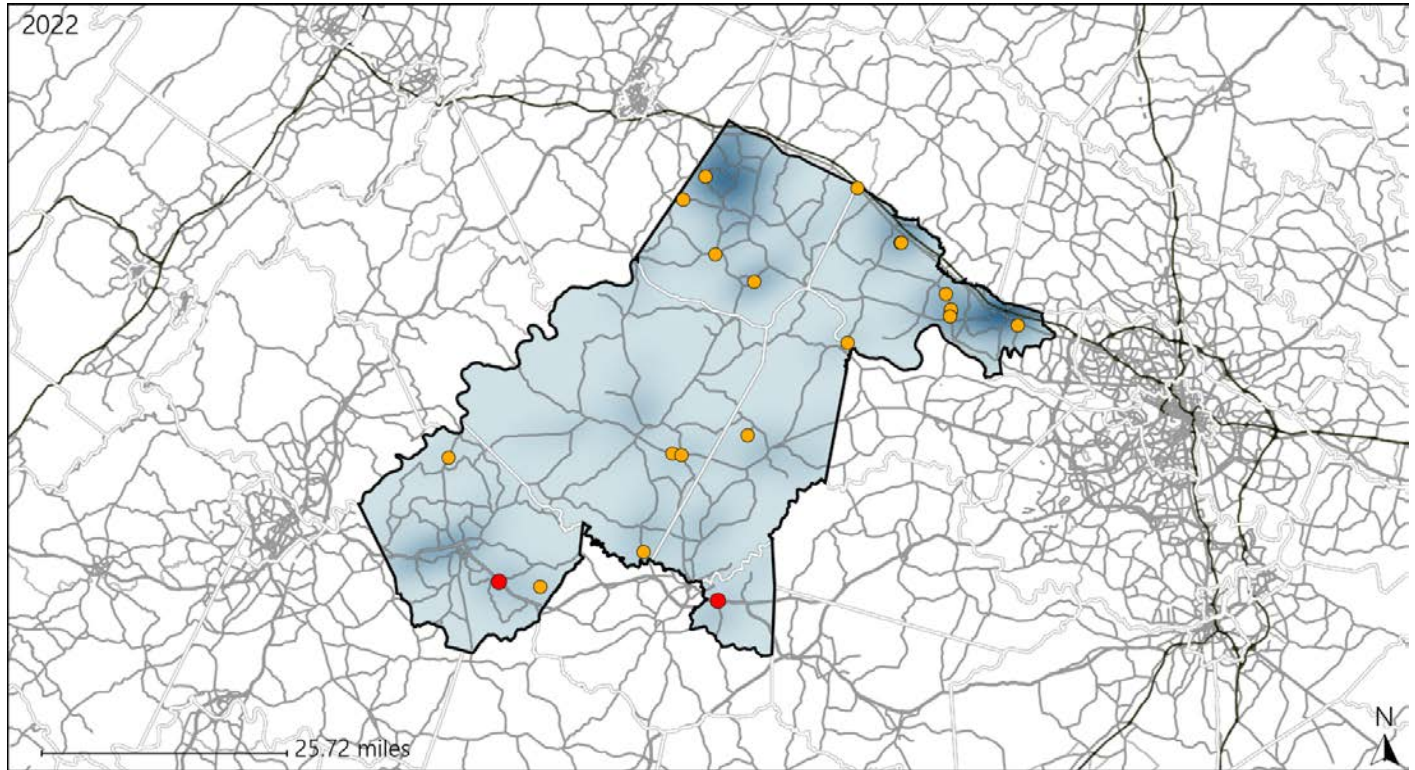


Available Crash Data - Calendar Year (CY)	CY 2019	CY 2020	CY 2021	CY 2022
Total Crashes	1203	988	1103	1083
Fatalities	18	15	24	14
Injuries	592	534	485	478
Unrestrained Fatalities	7	9	12	7
Percent of Unrestrained Fatalities to Total Fatalities	39%	60%	50%	50%
Unrestrained Injuries	83	86	86	71
Percent of Unrestrained Injuries to Total Injuries	14%	16%	18%	15%

Virginia House District 56 Distracted Driving Crash Statistics

Report Generated May, 2023

	Count	Highest Time Period(s)	Highest Day(s)	Highest Month(s)
Fatal Crashes	2	3:00pm - 5:59pm	Sunday • Tuesday	May
Resulting Fatalities	2	Noon - 2:59pm (100%)	(100%)	(100%)
Serious Injury Crashes	19	3:00pm - 5:59pm (32%)	Thursday (26%)	March (21%)



House District 56 Distracted Driving-Related Crashes

- | | |
|--|--|
| Interstate Crashes | Non-interstate Crashes |
| ● Fatal | ● Fatal |
| ● Serious Injury | ● Serious Injury |

The blue gradient represents the density of all distracted driving-related crashes.



Available Crash Data - Calendar Year (CY)	CY 2019	CY 2020	CY 2021	CY 2022
Total Crashes	1203	988	1103	1083
Fatal Crashes	17	13	20	12
Injury Crashes	419	351	356	340
Distracted Driving-Related Fatal Crashes	4	3	3	2
Percent of Distracted Driving-Related Fatal Crashes to Total Fatal Crashes	24%	23%	15%	17%
Distracted Driving-Related Injury Crashes	85	60	69	61
Percent of Distracted Driving-Related Injury Crashes to Total Injury Crashes	20%	17%	19%	18%