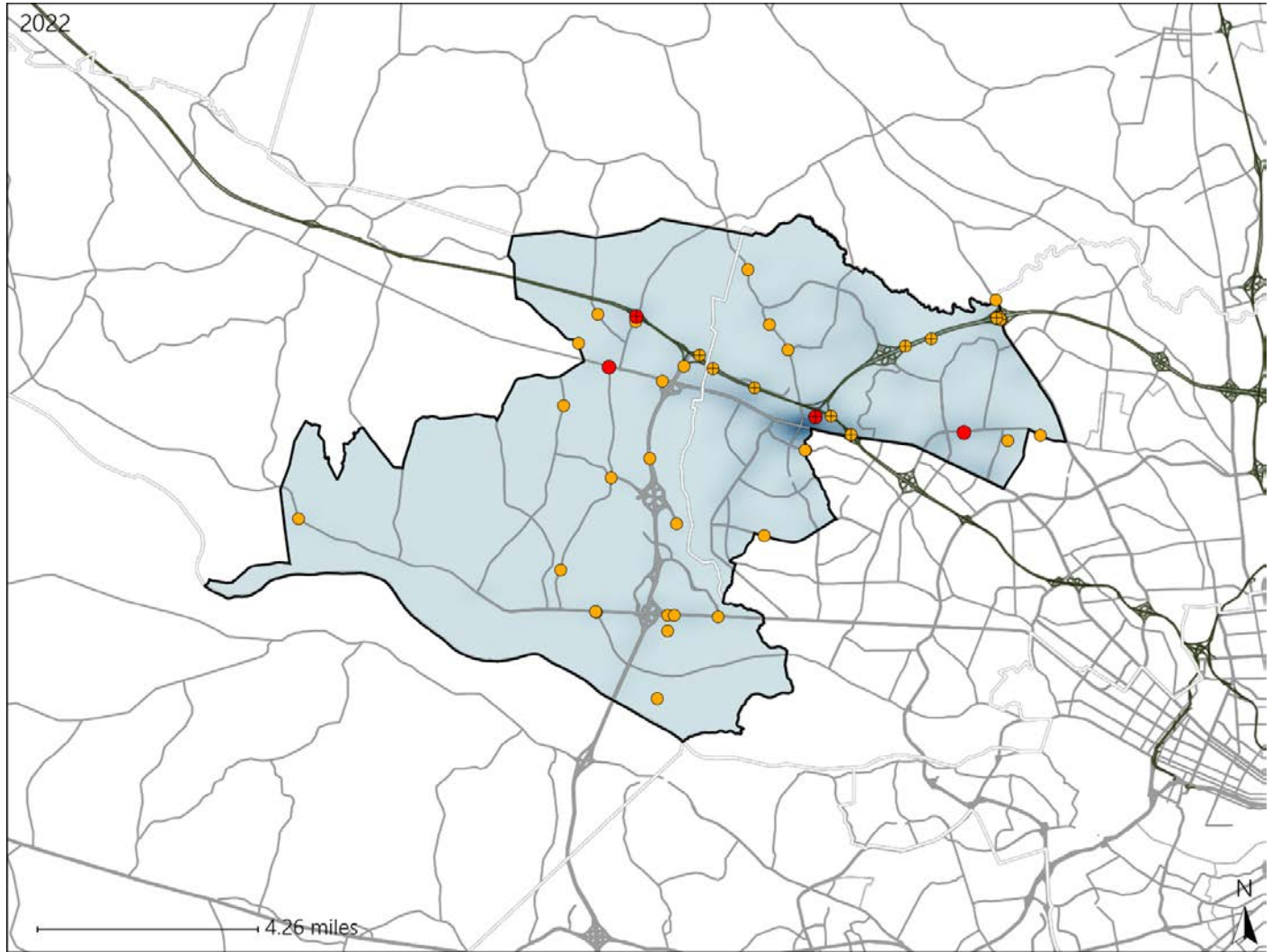


# Virginia House District 57 Crash Statistics

Report Generated May, 2023

	Count	Highest Time Period(s)	Highest Day(s)	Highest Month(s)
<b>Fatal Crashes</b>	<b>4</b>	3:00pm - 5:59pm	Sunday	March
<b>Resulting Fatalities</b>	<b>4</b>	6:00pm - 8:59pm (50%)	(50%)	(50%)
<b>Serious Injury Crashes</b>	<b>38</b>	6:00pm - 8:59pm (21%)	Monday (26%)	January (21%)



### House District 57 Crashes

Interstate Crashes

- Fatal
- Serious Injury

Non-interstate Crashes

- Fatal
- Serious Injury

The blue gradient represents the density of all crashes.

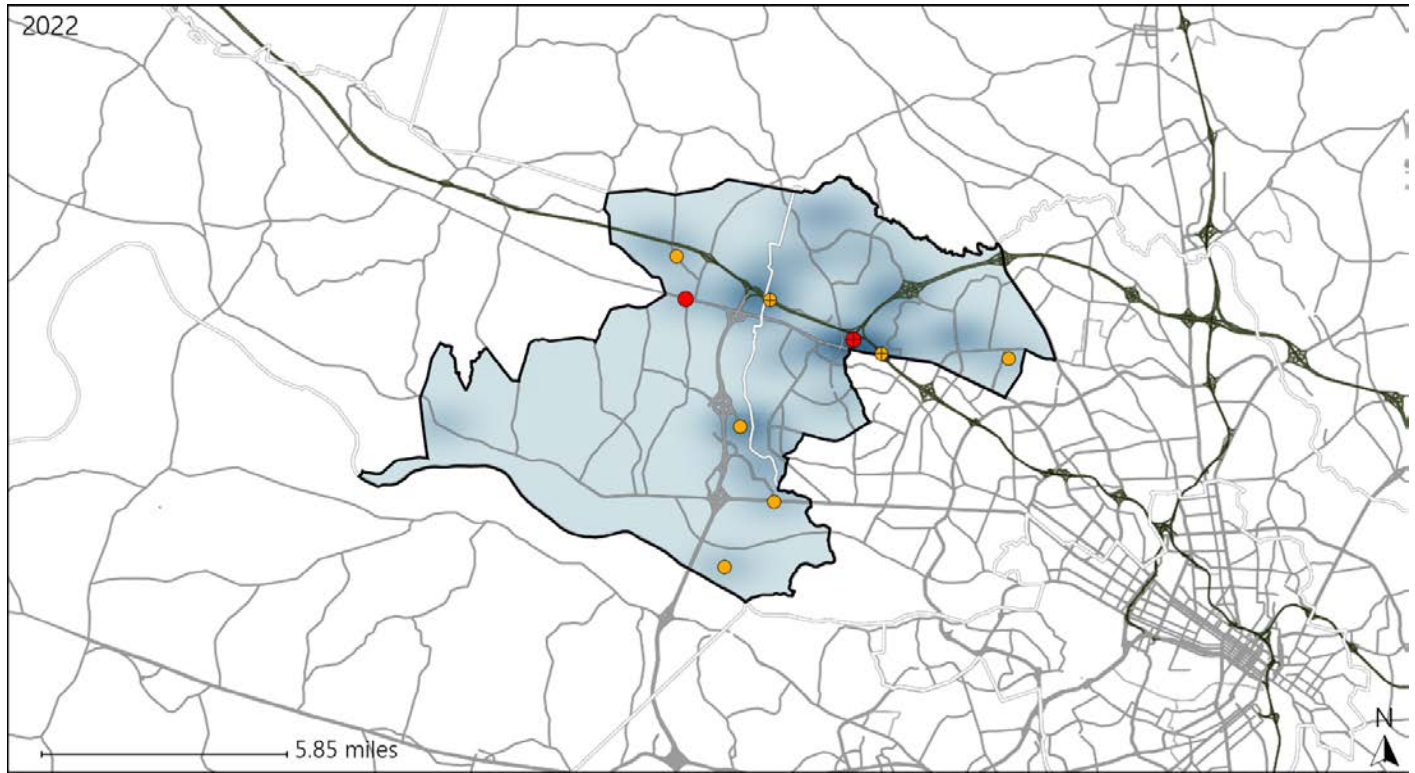


Available Crash Data - Calendar Year (CY)	CY 2019	CY 2020	CY 2021	CY 2022
Total Crashes	1104	705	774	843
Fatal Crashes	8	1	3	4
Injury Crashes	294	187	201	239

# Virginia House District 57 Alcohol Crash Statistics

Report Generated May, 2023

	Count	Highest Time Period(s)	Highest Day(s)	Highest Month(s)
<b>Fatal Crashes</b>	<b>2</b>	<b>6:00pm - 8:59pm</b>	<b>Sunday • Wednesday</b>	<b>August • January</b>
<b>Resulting Fatalities</b>	<b>2</b>	<b>Midnight - 2:59am</b> (100%)	<b>(100%)</b>	<b>(100%)</b>
<b>Serious Injury Crashes</b>	<b>7</b>	<b>9:00pm - 11:59pm</b>	<b>Sunday • Thursday</b>	<b>January • March</b>
		<b>Midnight - 2:59am</b> (58%)	<b>(58%)</b>	<b>(58%)</b>



### House District 57 Alcohol-Related Crashes

Interstate Crashes                      Non-interstate Crashes  
 ● Fatal                                      ● Fatal  
 ⊕ Serious Injury                          ⊕ Serious Injury

The blue gradient represents the density of all alcohol-related crashes.

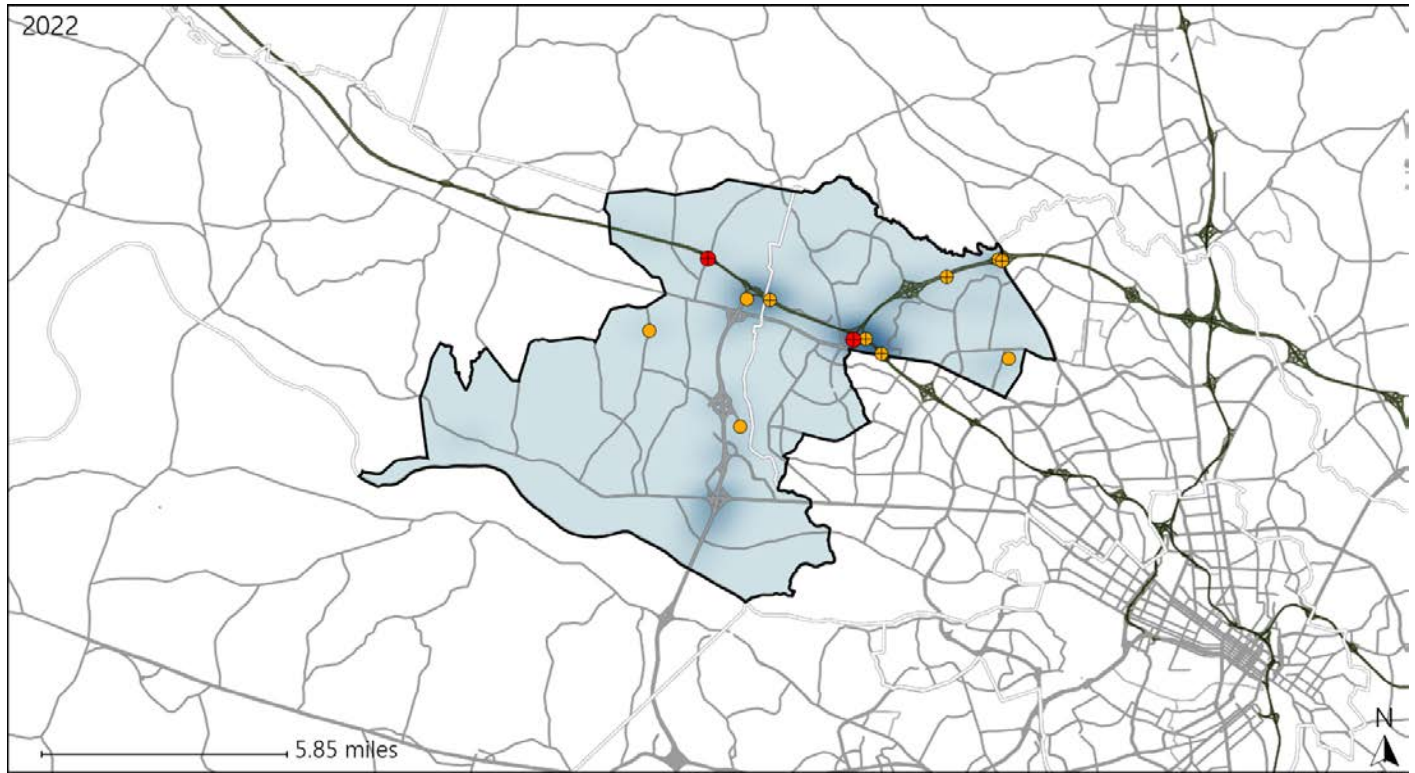


Available Crash Data - Calendar Year (CY)	CY 2019	CY 2020	CY 2021	CY 2022
Total Crashes	1104	705	774	843
Fatal Crashes	8	1	3	4
Injury Crashes	294	187	201	239
Alcohol-Related Fatal Crashes	1	0	0	2
Percent of Alcohol-Related Fatal Crashes to Total Fatal Crashes	13%	0%	0%	50%
Alcohol-Related Injury Crashes	16	11	11	13
Percent of Alcohol-Related Injury Crashes to Total Injury Crashes	5%	6%	5%	5%

# Virginia House District 57 Speed Crash Statistics

Report Generated May, 2023

	Count	Highest Time Period(s)	Highest Day(s)	Highest Month(s)
<b>Fatal Crashes</b>	<b>2</b>	Midnight - 2:59am	Thursday • Wednesday	August • March
<b>Resulting Fatalities</b>	<b>2</b>	Noon - 2:59pm (100%)	(100%)	(100%)
<b>Serious Injury Crashes</b>	<b>12</b>	3:00pm - 5:59pm 6:00pm - 8:59pm (50%)	Monday (42%)	January (33%)



### House District 57 Speed-Related Crashes

Interstate Crashes                      Non-interstate Crashes  
 ● Fatal                                      ● Fatal  
 ⊕ Serious Injury                          ⊕ Serious Injury

The blue gradient represents the density of all speed-related crashes.



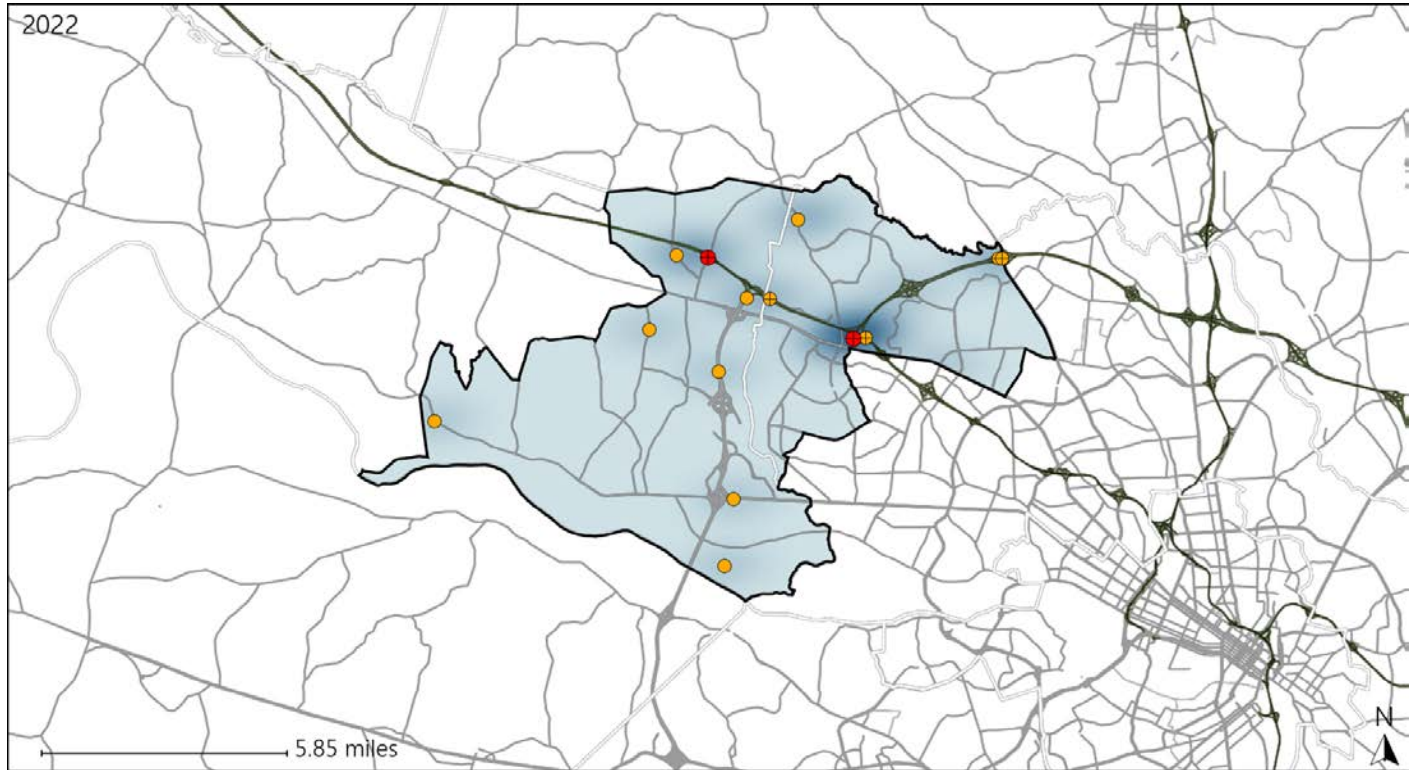
Available Crash Data - Calendar Year (CY)	CY 2019	CY 2020	CY 2021	CY 2022
Total Crashes	1104	705	774	843
Fatal Crashes	8	1	3	4
Injury Crashes	294	187	201	239
Speed-Related Fatal Crashes	3	1	0	2
Percent of Speed-Related Fatal Crashes to Total Fatal Crashes	38%	100%	0%	50%
Speed-Related Injury Crashes	32	16	19	31
Percent of Speed-Related Injury Crashes to Total Injury Crashes	11%	9%	9%	13%



# Virginia House District 57 Unrestrained Crash Statistics

Report Generated May, 2023

	Count	Highest Time Period(s)	Highest Day(s)	Highest Month(s)
<b>Fatal Crashes</b>	<b>2</b>	<b>Midnight - 2:59am</b>	<b>Thursday • Wednesday</b>	<b>August • March</b>
<b>Unrestrained Fatalities</b>	<b>2</b>	<b>Noon - 2:59pm</b> (100%)	<b>(100%)</b>	<b>(100%)</b>
<b>Serious Injury Crashes</b>	<b>12</b>	<b>6:00pm - 8:59pm</b> (33%)	<b>Monday</b> (33%)	<b>January</b> (33%)



## House District 57 Unrestrained-Related Crashes

- |                    |                        |
|--------------------|------------------------|
| Interstate Crashes | Non-interstate Crashes |
| ● Fatal            | ● Fatal                |
| ⊕ Serious Injury   | ⊕ Serious Injury       |

The blue gradient represents the density of all unrestrained-related crashes.

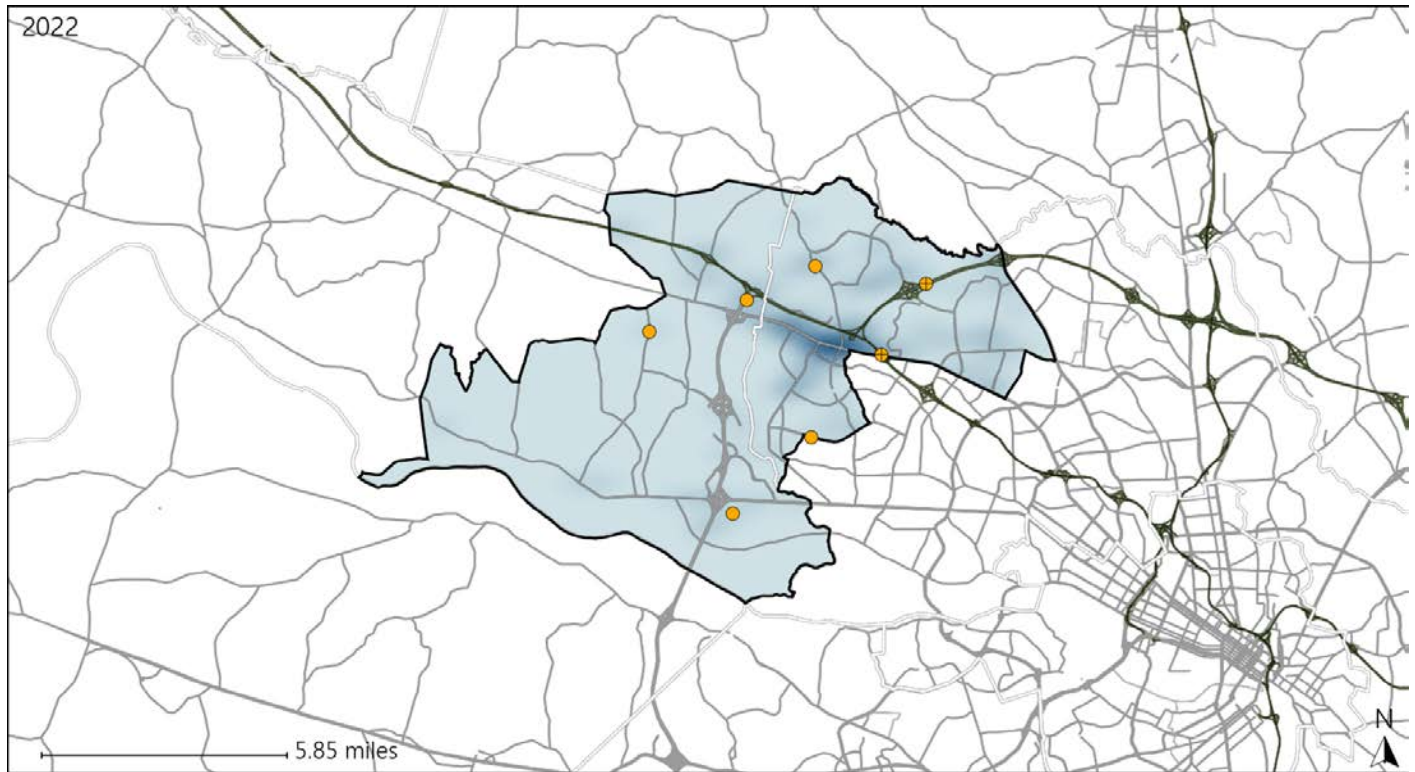


Available Crash Data - Calendar Year (CY)	CY 2019	CY 2020	CY 2021	CY 2022
Total Crashes	1104	705	774	843
Fatalities	10	1	3	4
Injuries	485	310	347	385
Unrestrained Fatalities	6	0	0	2
Percent of Unrestrained Fatalities to Total Fatalities	60%	0%	0%	50%
Unrestrained Injuries	19	5	15	23
Percent of Unrestrained Injuries to Total Injuries	4%	2%	4%	6%

# Virginia House District 57 Distracted Driving Crash Statistics

Report Generated May, 2023

	Count	Highest Time Period(s)	Highest Day(s)	Highest Month(s)
<b>Fatal Crashes</b>	<b>0</b>	-	-	-
<b>Resulting Fatalities</b>	<b>0</b>	-	-	-
<b>Serious Injury Crashes</b>	<b>7</b>	3:00pm - 5:59pm 9:00pm - 11:59pm (58%)	Thursday (43%)	August • February (28%)



## House District 57 Distracted Driving-Related Crashes

- |                    |                        |
|--------------------|------------------------|
| Interstate Crashes | Non-interstate Crashes |
| ● Fatal            | ● Fatal                |
| ⊕ Serious Injury   | ⊕ Serious Injury       |

The blue gradient represents the density of all distracted driving-related crashes.



Available Crash Data - Calendar Year (CY)	CY 2019	CY 2020	CY 2021	CY 2022
Total Crashes	1104	705	774	843
Fatal Crashes	8	1	3	4
Injury Crashes	294	187	201	239
Distracted Driving-Related Fatal Crashes	1	0	1	0
Percent of Distracted Driving-Related Fatal Crashes to Total Fatal Crashes	13%	0%	33%	0%
Distracted Driving-Related Injury Crashes	53	37	35	37
Percent of Distracted Driving-Related Injury Crashes to Total Injury Crashes	18%	20%	17%	15%