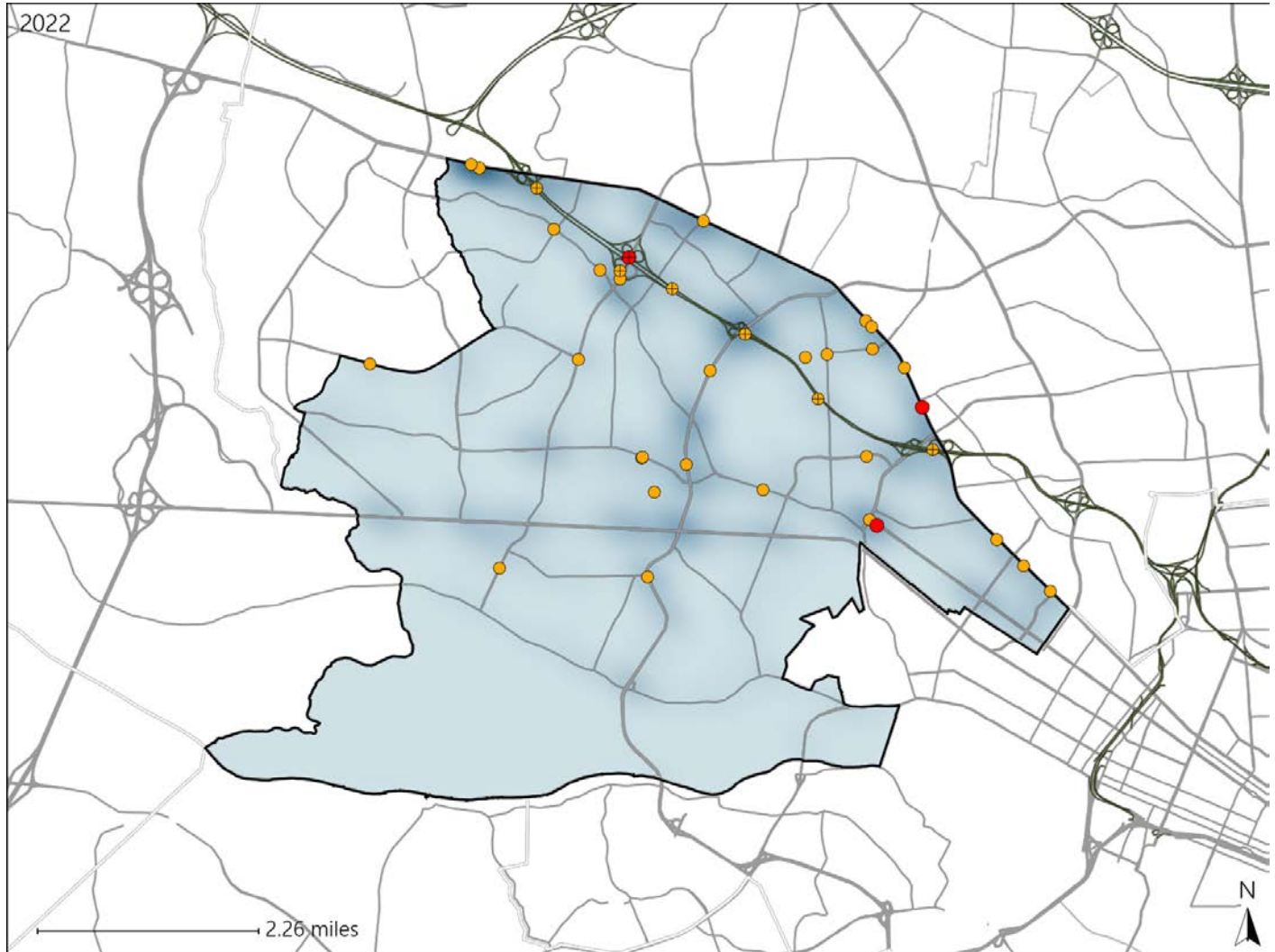


# Virginia House District 58 Crash Statistics

Report Generated May, 2023

	Count	Highest Time Period(s)	Highest Day(s)	Highest Month(s)
<b>Fatal Crashes</b>	<b>3</b>	3:00am - 5:59am	Saturday • Tuesday	April
<b>Resulting Fatalities</b>	<b>3</b>	9:00am - 11:59am (66%)	(66%)	(67%)
<b>Serious Injury Crashes</b>	<b>33</b>	3:00pm - 5:59pm (33%)	Monday • Sunday (36%)	August • February (24%)



### House District 58 Crashes

Interstate Crashes

- Fatal
- Serious Injury

Non-interstate Crashes

- Fatal
- Serious Injury

The blue gradient represents the density of all crashes.

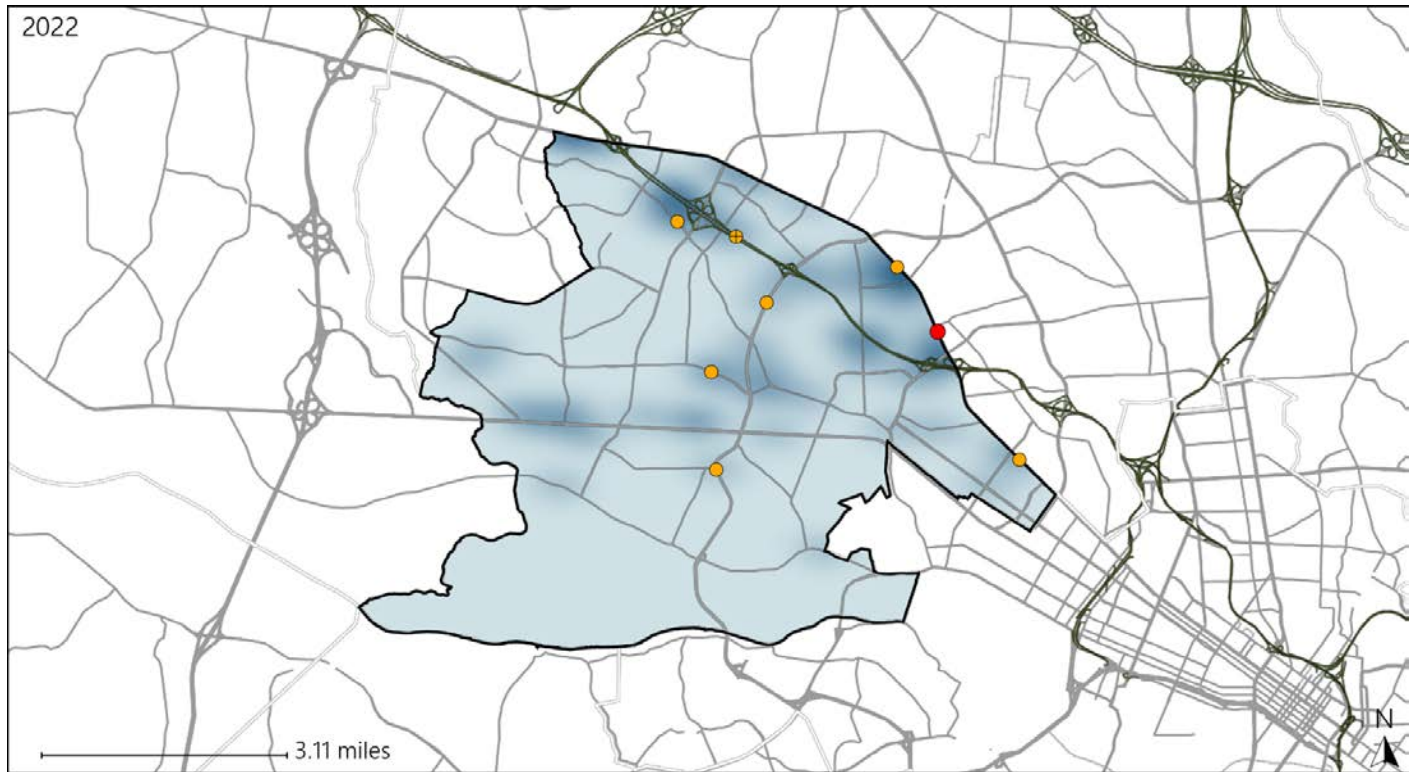


Available Crash Data - Calendar Year (CY)	CY 2019	CY 2020	CY 2021	CY 2022
Total Crashes	1594	1148	1313	1403
Fatal Crashes	4	5	4	3
Injury Crashes	437	302	336	364

# Virginia House District 58 Alcohol Crash Statistics

Report Generated May, 2023

	Count	Highest Time Period(s)	Highest Day(s)	Highest Month(s)
<b>Fatal Crashes</b>	<b>1</b>	<b>9:00pm - 11:59pm</b>	<b>Saturday</b>	<b>April</b>
<b>Resulting Fatalities</b>	<b>1</b>	(100%)	(100%)	(100%)
<b>Serious Injury Crashes</b>	<b>7</b>	<b>3:00pm - 5:59pm</b> <b>6:00pm - 8:59pm</b>	<b>Sunday</b>	<b>October</b>
		(58%)	(43%)	(29%)



### House District 58 Alcohol-Related Crashes

Interstate Crashes                      Non-interstate Crashes  
 ● Fatal                                      ● Fatal  
 ⊕ Serious Injury                          ● Serious Injury

The blue gradient represents the density of all alcohol-related crashes.

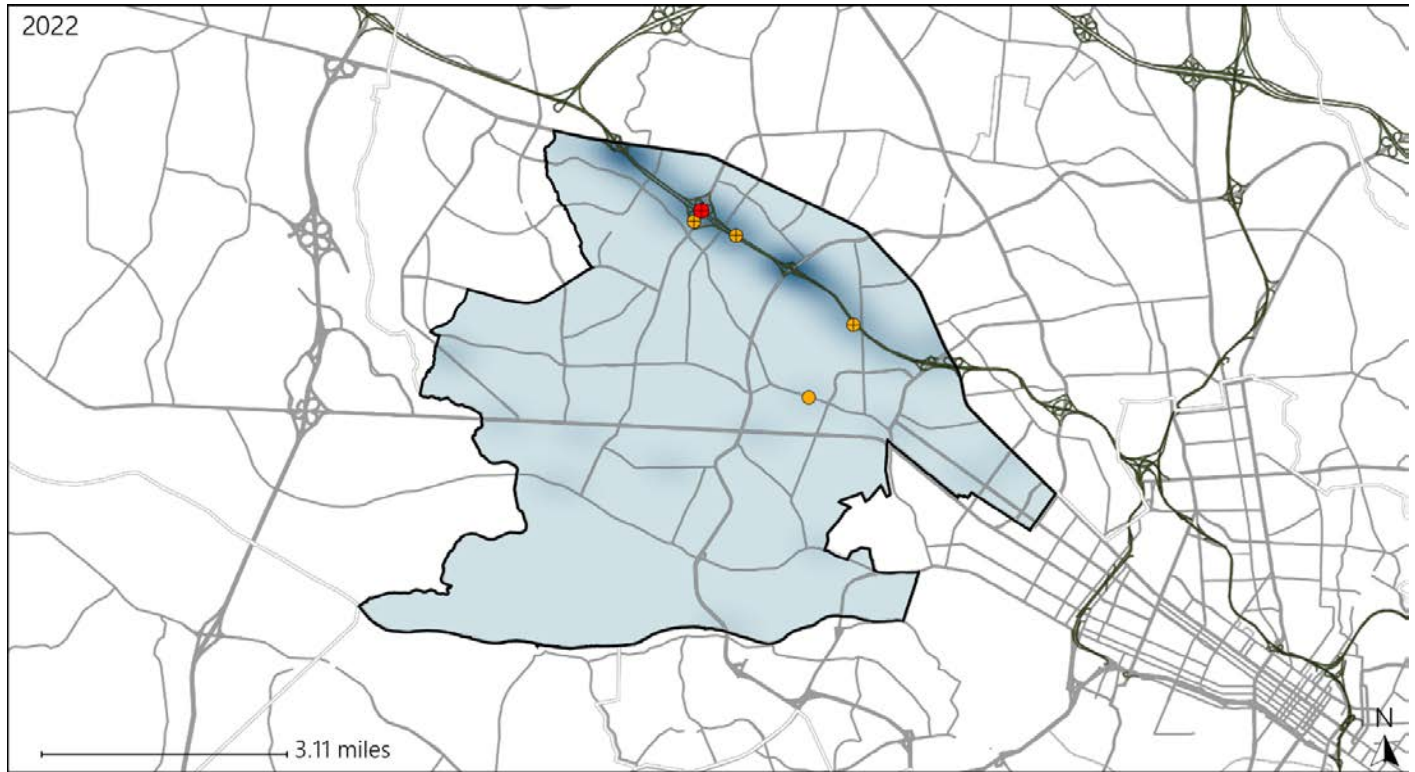


Available Crash Data - Calendar Year (CY)	CY 2019	CY 2020	CY 2021	CY 2022
Total Crashes	1594	1148	1313	1403
Fatal Crashes	4	5	4	3
Injury Crashes	437	302	336	364
Alcohol-Related Fatal Crashes	3	0	0	1
Percent of Alcohol-Related Fatal Crashes to Total Fatal Crashes	75%	0%	0%	33%
Alcohol-Related Injury Crashes	22	21	22	21
Percent of Alcohol-Related Injury Crashes to Total Injury Crashes	5%	7%	7%	6%





# Virginia House District 58 Speed Crash Statistics

Report Generated May, 2023

	Count	Highest Time Period(s)	Highest Day(s)	Highest Month(s)
<b>Fatal Crashes</b>	<b>1</b>	<b>3:00am - 5:59am</b>	<b>Wednesday</b>	<b>June</b>
<b>Resulting Fatalities</b>	<b>1</b>	<b>(100%)</b>	<b>(100%)</b>	<b>(100%)</b>
<b>Serious Injury Crashes</b>	<b>4</b>	<b>3:00pm - 5:59pm</b>	<b>Saturday</b>	<b>August • February</b>
		<b>(50%)</b>	<b>(50%)</b>	<b>(50%)</b>



## House District 58 Speed-Related Crashes

Interstate Crashes                      Non-interstate Crashes  
 Fatal                                       Fatal  
 Serious Injury                               Serious Injury

The blue gradient represents the density of all speed-related crashes.



Available Crash Data - Calendar Year (CY)	CY 2019	CY 2020	CY 2021	CY 2022
<b>Total Crashes</b>	<b>1594</b>	<b>1148</b>	<b>1313</b>	<b>1403</b>
<b>Fatal Crashes</b>	<b>4</b>	<b>5</b>	<b>4</b>	<b>3</b>
<b>Injury Crashes</b>	<b>437</b>	<b>302</b>	<b>336</b>	<b>364</b>
<b>Speed-Related Fatal Crashes</b>	<b>1</b>	<b>1</b>	<b>1</b>	<b>1</b>
<b>Percent of Speed-Related Fatal Crashes to Total Fatal Crashes</b>	<b>25%</b>	<b>20%</b>	<b>25%</b>	<b>33%</b>
<b>Speed-Related Injury Crashes</b>	<b>24</b>	<b>15</b>	<b>13</b>	<b>21</b>
<b>Percent of Speed-Related Injury Crashes to Total Injury Crashes</b>	<b>5%</b>	<b>5%</b>	<b>4%</b>	<b>6%</b>



# Virginia House District 58 Unrestrained Crash Statistics

Report Generated May, 2023

	Count	Highest Time Period(s)	Highest Day(s)	Highest Month(s)
<b>Fatal Crashes</b>	<b>1</b>	<b>3:00am - 5:59am</b>	<b>Wednesday</b>	<b>June</b>
<b>Unrestrained Fatalities</b>	<b>1</b>	<b>(100%)</b>	<b>(100%)</b>	<b>(100%)</b>
<b>Serious Injury Crashes</b>	<b>2</b>	<b>Midnight - 2:59am Noon - 2:59pm</b>	<b>Friday • Monday</b>	<b>July • May</b>
		<b>(100%)</b>	<b>(100%)</b>	<b>(100%)</b>



## House District 58 Unrestrained-Related Crashes

- |                    |                        |
|--------------------|------------------------|
| Interstate Crashes | Non-interstate Crashes |
| Fatal              | Fatal                  |
| Serious Injury     | Serious Injury         |

The blue gradient represents the density of all unrestrained-related crashes.

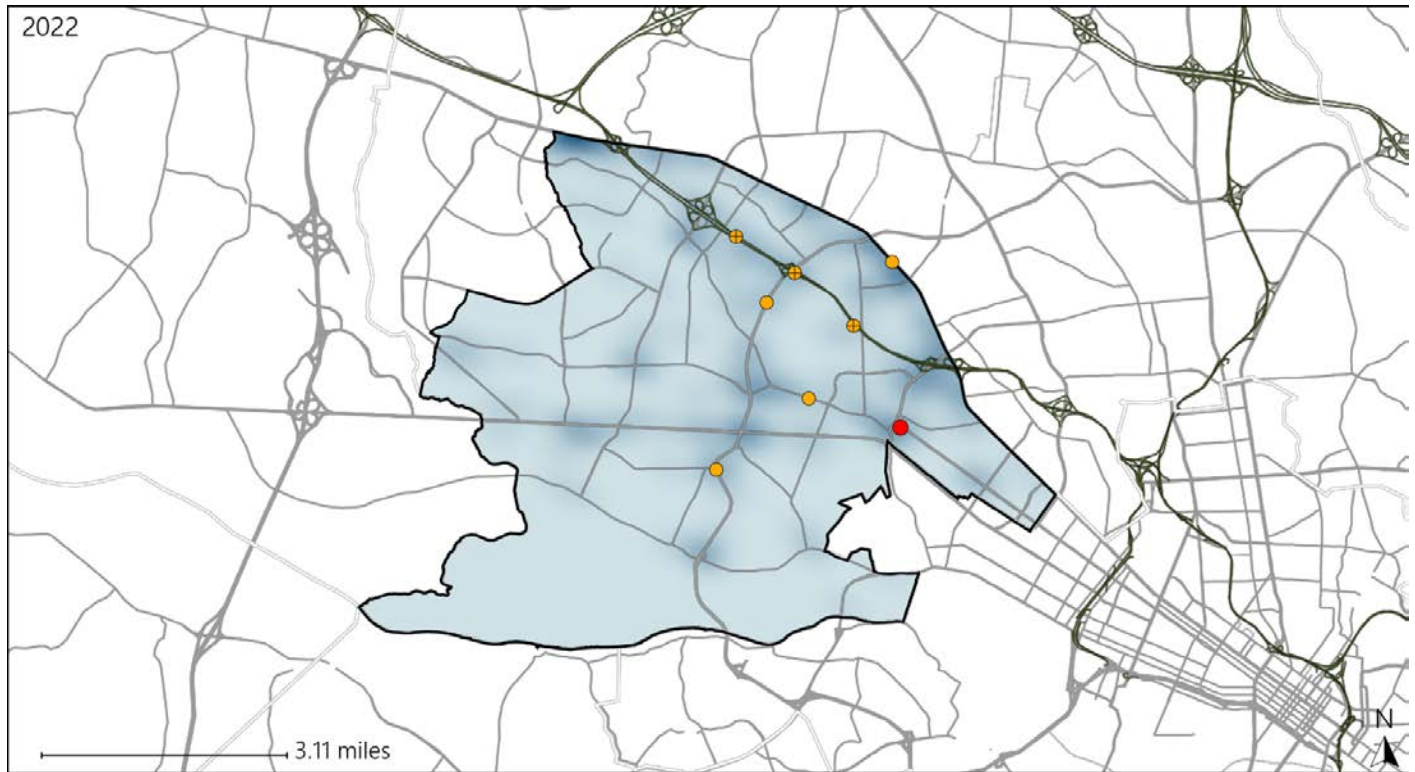


Available Crash Data - Calendar Year (CY)	CY 2019	CY 2020	CY 2021	CY 2022
<b>Total Crashes</b>	<b>1594</b>	<b>1148</b>	<b>1313</b>	<b>1403</b>
<b>Fatalities</b>	<b>4</b>	<b>5</b>	<b>4</b>	<b>3</b>
<b>Injuries</b>	<b>734</b>	<b>537</b>	<b>572</b>	<b>619</b>
<b>Unrestrained Fatalities</b>	<b>1</b>	<b>0</b>	<b>0</b>	<b>1</b>
<b>Percent of Unrestrained Fatalities to Total Fatalities</b>	<b>25%</b>	<b>0%</b>	<b>0%</b>	<b>33%</b>
<b>Unrestrained Injuries</b>	<b>23</b>	<b>20</b>	<b>25</b>	<b>15</b>
<b>Percent of Unrestrained Injuries to Total Injuries</b>	<b>3%</b>	<b>4%</b>	<b>4%</b>	<b>2%</b>

# Virginia House District 58 Distracted Driving Crash Statistics

Report Generated May, 2023

	Count	Highest Time Period(s)	Highest Day(s)	Highest Month(s)
<b>Fatal Crashes</b>	<b>1</b>	<b>9:00am - 11:59am</b>	<b>Tuesday</b>	<b>April</b>
<b>Resulting Fatalities</b>	<b>1</b>	<b>(100%)</b>	<b>(100%)</b>	<b>(100%)</b>
<b>Serious Injury Crashes</b>	<b>7</b>	<b>3:00am - 5:59am</b> <b>3:00pm - 5:59pm</b>	<b>Sunday</b>	<b>March</b>
		<b>(58%)</b>	<b>(43%)</b>	<b>(29%)</b>



## House District 58 Distracted Driving-Related Crashes

- |                    |                        |
|--------------------|------------------------|
| Interstate Crashes | Non-interstate Crashes |
| Fatal              | Fatal                  |
| Serious Injury     | Serious Injury         |

The blue gradient represents the density of all distracted driving-related crashes.



Available Crash Data - Calendar Year (CY)	CY 2019	CY 2020	CY 2021	CY 2022
Total Crashes	1594	1148	1313	1403
Fatal Crashes	4	5	4	3
Injury Crashes	437	302	336	364
Distracted Driving-Related Fatal Crashes	2	1	0	1
Percent of Distracted Driving-Related Fatal Crashes to Total Fatal Crashes	50%	20%	0%	33%
Distracted Driving-Related Injury Crashes	73	68	58	54
Percent of Distracted Driving-Related Injury Crashes to Total Injury Crashes	17%	23%	17%	15%