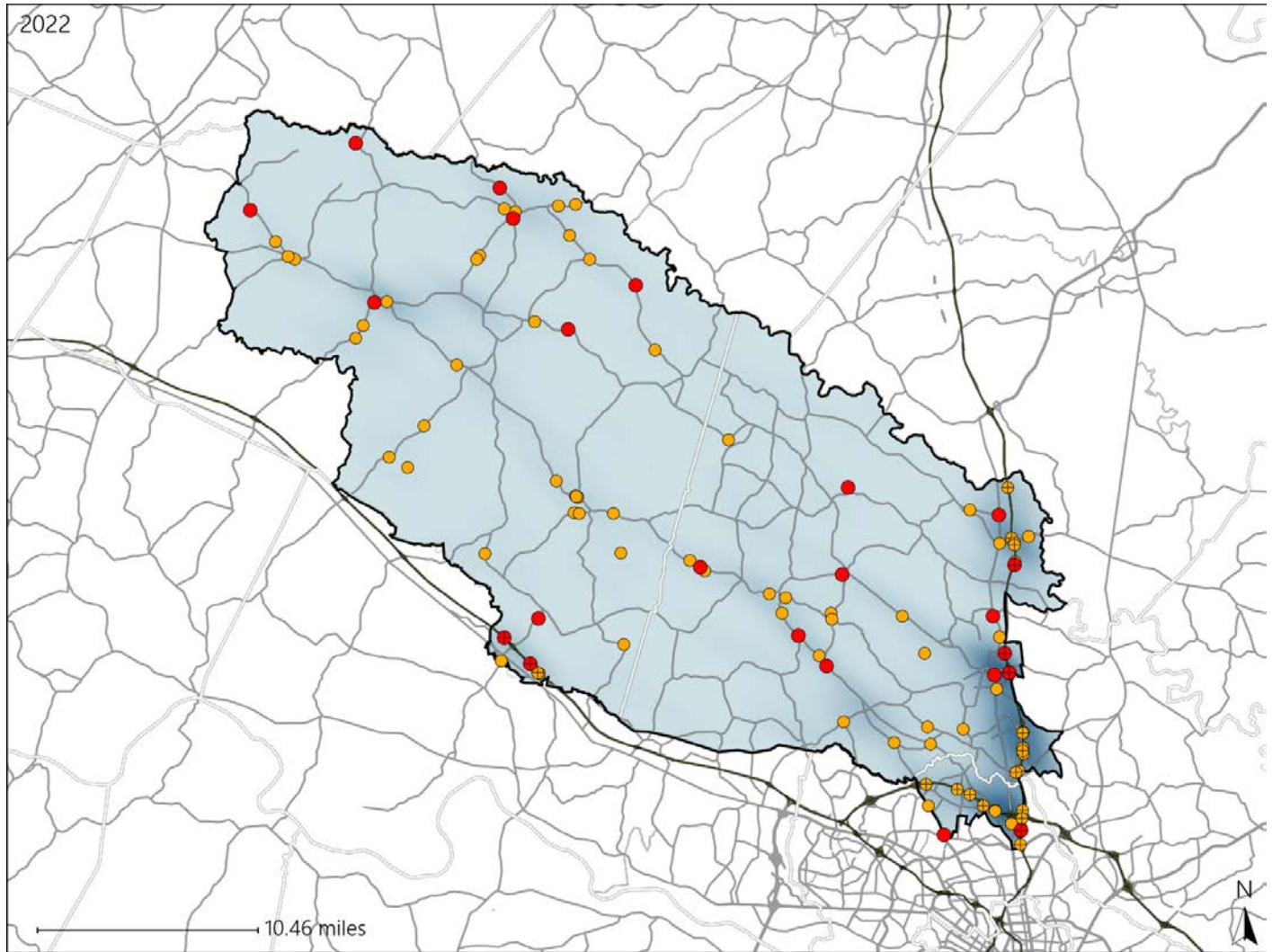


Virginia House District 59 Crash Statistics

Report Generated May, 2023

	Count	Highest Time Period(s)	Highest Day(s)	Highest Month(s)
Fatal Crashes	23	3:00pm - 5:59pm (22%)	Saturday • Sunday (44%)	May (17%)
Resulting Fatalities	25			
Serious Injury Crashes	81	3:00pm - 5:59pm (25%)	Sunday • Thursday (34%)	July (14%)



House District 59 Crashes

Interstate Crashes

- Fatal
- Serious Injury

Non-interstate Crashes

- Fatal
- Serious Injury

The blue gradient represents the density of all crashes.

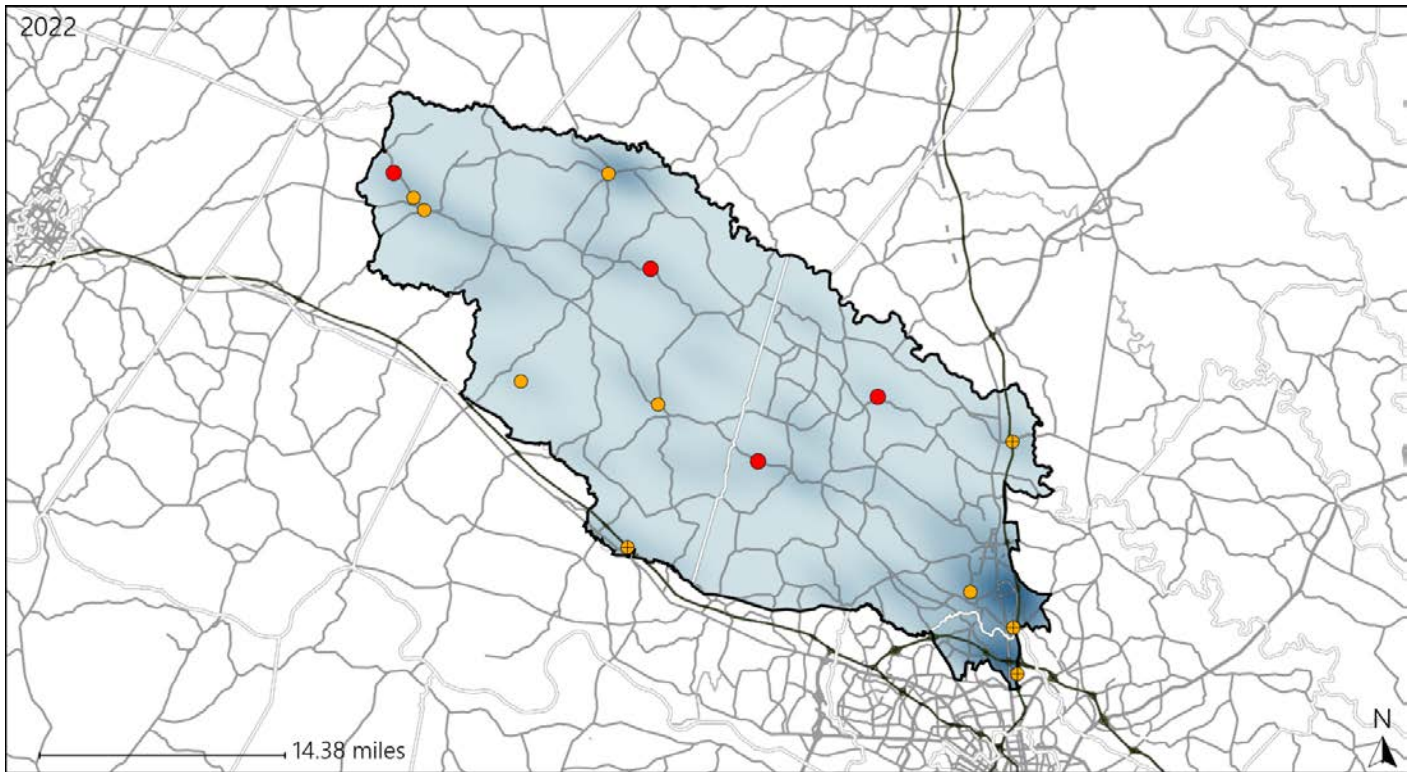


Available Crash Data - Calendar Year (CY)	CY 2019	CY 2020	CY 2021	CY 2022
Total Crashes	1496	1257	1514	1515
Fatal Crashes	16	13	22	23
Injury Crashes	448	364	394	416

Virginia House District 59 Alcohol Crash Statistics

Report Generated May, 2023

	Count	Highest Time Period(s)	Highest Day(s)	Highest Month(s)
Fatal Crashes	4	9:00pm - 11:59pm	Monday • Saturday	April • July
Resulting Fatalities	4	(50%)	(50%)	(50%)
Serious Injury Crashes	10	9:00pm - 11:59pm Midnight - 2:59am	Sunday	July • June
		(60%)	(40%)	(40%)



House District 59 Alcohol-Related Crashes

Interstate Crashes Non-interstate Crashes
 ● Fatal ● Fatal
 ⊕ Serious Injury ⊕ Serious Injury

The blue gradient represents the density of all alcohol-related crashes.

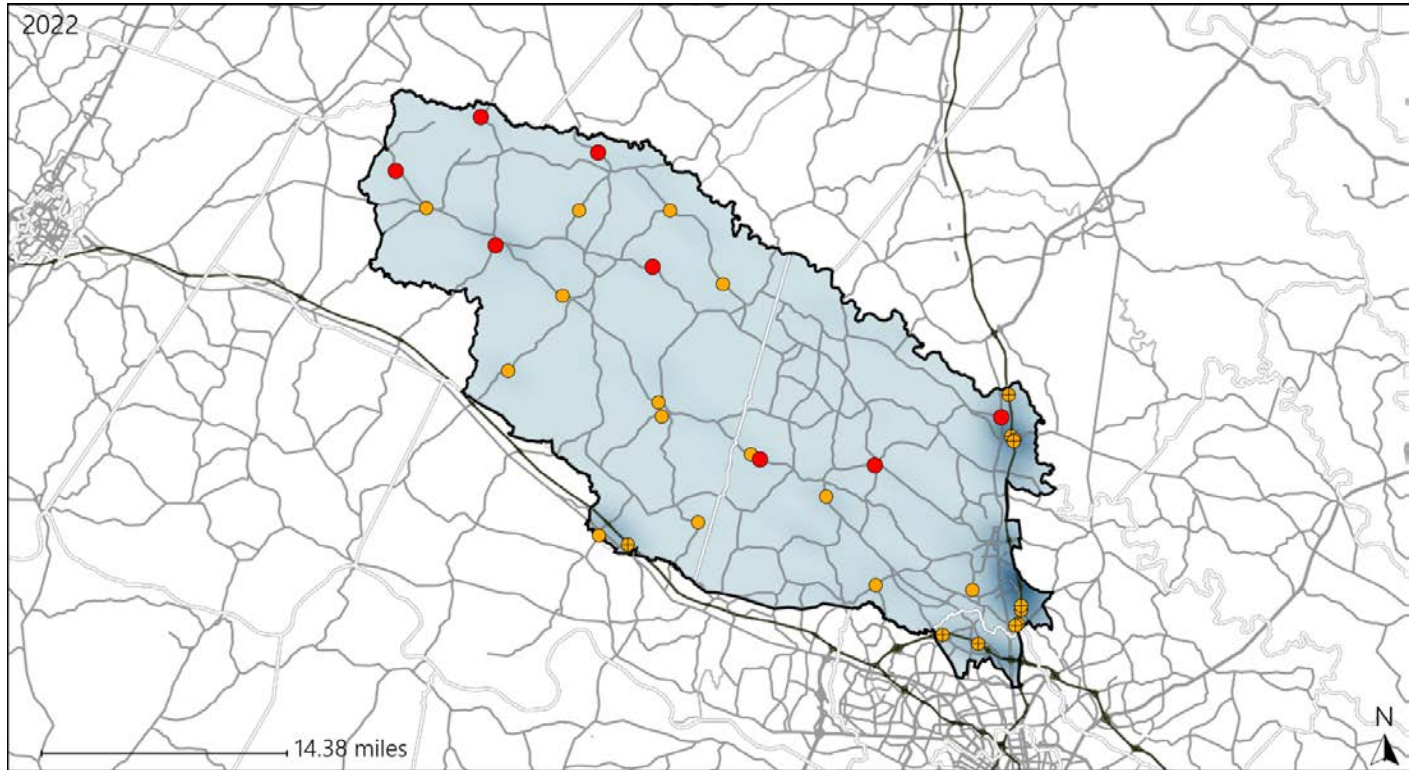


Available Crash Data - Calendar Year (CY)	CY 2019	CY 2020	CY 2021	CY 2022
Total Crashes	1496	1257	1514	1515
Fatal Crashes	16	13	22	23
Injury Crashes	448	364	394	416
Alcohol-Related Fatal Crashes	6	6	5	4
Percent of Alcohol-Related Fatal Crashes to Total Fatal Crashes	38%	46%	23%	17%
Alcohol-Related Injury Crashes	25	23	29	27
Percent of Alcohol-Related Injury Crashes to Total Injury Crashes	6%	6%	7%	6%

Virginia House District 59 Speed Crash Statistics

Report Generated May, 2023

	Count	Highest Time Period(s)	Highest Day(s)	Highest Month(s)
Fatal Crashes	8	3:00pm - 5:59pm	Saturday	May • September
Resulting Fatalities	8	9:00pm - 11:59pm (50%)	(50%)	(50%)
Serious Injury Crashes	25	3:00pm - 5:59pm (28%)	Friday • Thursday (40%)	April • July (32%)



House District 59 Speed-Related Crashes

Interstate Crashes Non-interstate Crashes
 ● Fatal ● Fatal
 ⊕ Serious Injury ⊕ Serious Injury

The blue gradient represents the density of all speed-related crashes.

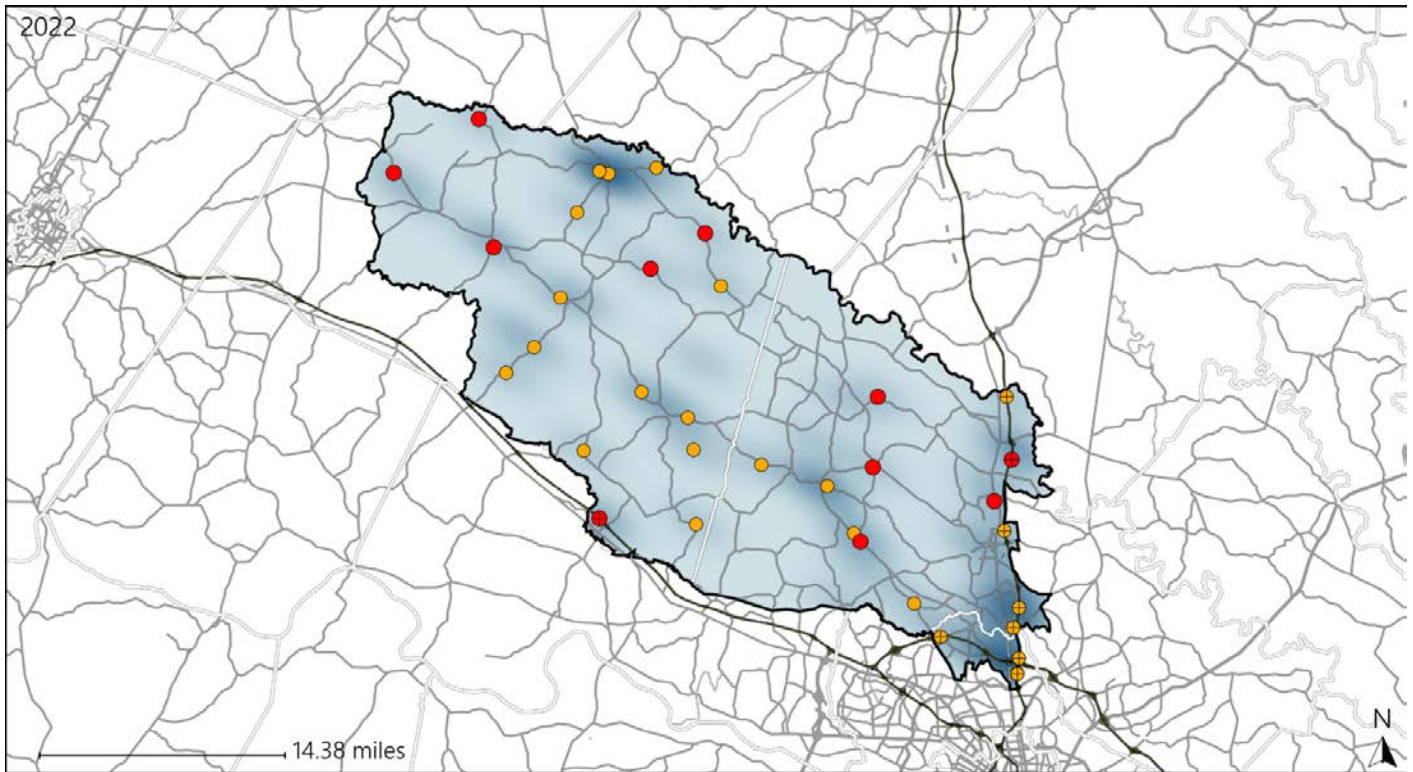


Available Crash Data - Calendar Year (CY)	CY 2019	CY 2020	CY 2021	CY 2022
Total Crashes	1496	1257	1514	1515
Fatal Crashes	16	13	22	23
Injury Crashes	448	364	394	416
Speed-Related Fatal Crashes	7	3	9	8
Percent of Speed-Related Fatal Crashes to Total Fatal Crashes	44%	23%	41%	35%
Speed-Related Injury Crashes	83	82	80	73
Percent of Speed-Related Injury Crashes to Total Injury Crashes	19%	23%	20%	18%

Virginia House District 59 Unrestrained Crash Statistics

Report Generated May, 2023

	Count	Highest Time Period(s)	Highest Day(s)	Highest Month(s)
Fatal Crashes	11	9:00am - 11:59am	Monday	May
Unrestrained Fatalities	11	(27%)	(27%)	(27%)
Serious Injury Crashes	25	3:00pm - 5:59pm 9:00am - 11:59am	Saturday * Thursday	April
		(40%)	(40%)	(20%)



House District 59 Unrestrained-Related Crashes

- | | |
|--------------------|------------------------|
| Interstate Crashes | Non-interstate Crashes |
| ● Fatal | ● Fatal |
| ⊕ Serious Injury | ⊕ Serious Injury |

The blue gradient represents the density of all unrestrained-related crashes.

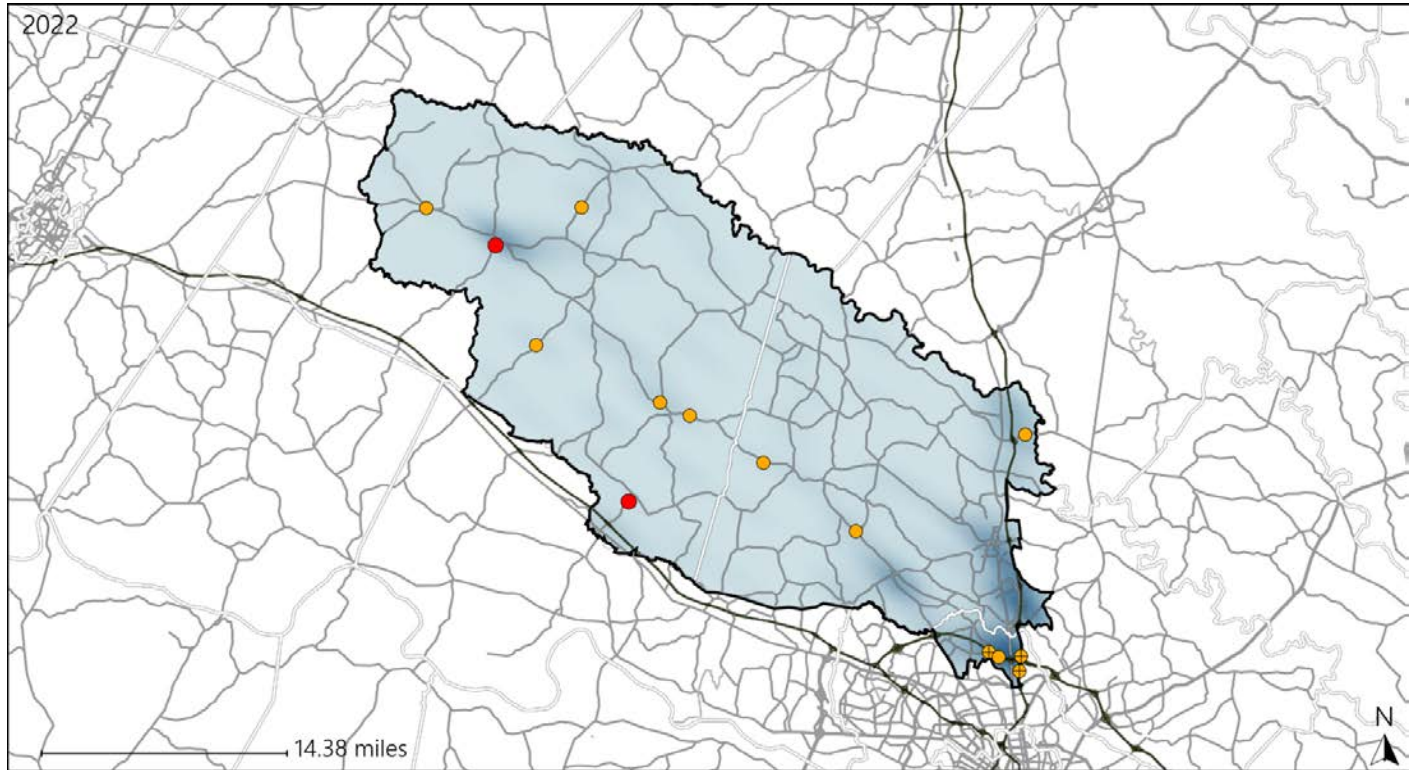


Available Crash Data - Calendar Year (CY)	CY 2019	CY 2020	CY 2021	CY 2022
Total Crashes	1496	1257	1514	1515
Fatalities	18	13	22	25
Injuries	690	545	588	665
Unrestrained Fatalities	9	9	7	11
Percent of Unrestrained Fatalities to Total Fatalities	50%	69%	32%	44%
Unrestrained Injuries	34	65	62	67
Percent of Unrestrained Injuries to Total Injuries	5%	12%	11%	10%

Virginia House District 59 Distracted Driving Crash Statistics

Report Generated May, 2023

	Count	Highest Time Period(s)	Highest Day(s)	Highest Month(s)
Fatal Crashes	2	9:00am - 11:59am	Sunday • Wednesday	March • November
Resulting Fatalities	2	Midnight - 2:59am (100%)	(100%)	(100%)
Serious Injury Crashes	12	Midnight - 2:59am (42%)	Sunday (33%)	January • July (50%)



House District 59 Distracted Driving-Related Crashes

- | | |
|--|--|
| Interstate Crashes | Non-interstate Crashes |
| ● Fatal | ● Fatal |
| ● Serious Injury | ● Serious Injury |

The blue gradient represents the density of all distracted driving-related crashes.



Available Crash Data - Calendar Year (CY)	CY 2019	CY 2020	CY 2021	CY 2022
Total Crashes	1496	1257	1514	1515
Fatal Crashes	16	13	22	23
Injury Crashes	448	364	394	416
Distracted Driving-Related Fatal Crashes	4	0	2	2
Percent of Distracted Driving-Related Fatal Crashes to Total Fatal Crashes	25%	0%	9%	9%
Distracted Driving-Related Injury Crashes	81	69	83	71
Percent of Distracted Driving-Related Injury Crashes to Total Injury Crashes	18%	19%	21%	17%