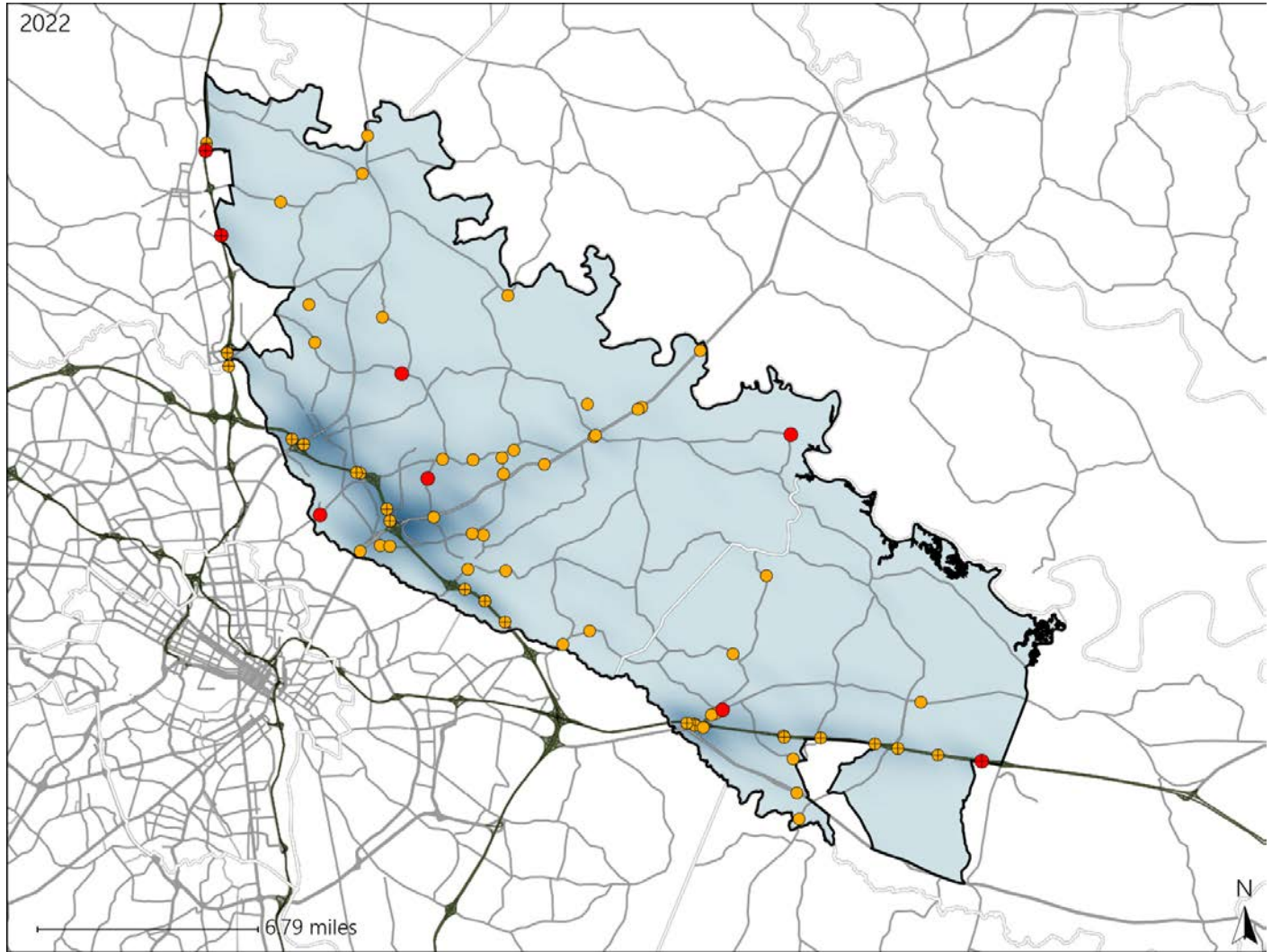


Virginia House District 60 Crash Statistics

Report Generated May, 2023

	Count	Highest Time Period(s)	Highest Day(s)	Highest Month(s)
Fatal Crashes	8	6:00pm - 8:59pm	Tuesday	February + September
Resulting Fatalities	8	Noon - 2:59pm (50%)	(38%)	(50%)
Serious Injury Crashes	61	3:00pm - 5:59pm (20%)	Monday + Tuesday (42%)	April (13%)



House District 60 Crashes

Interstate Crashes

- Fatal
- Serious Injury

Non-interstate Crashes

- Fatal
- Serious Injury

The blue gradient represents the density of all crashes.

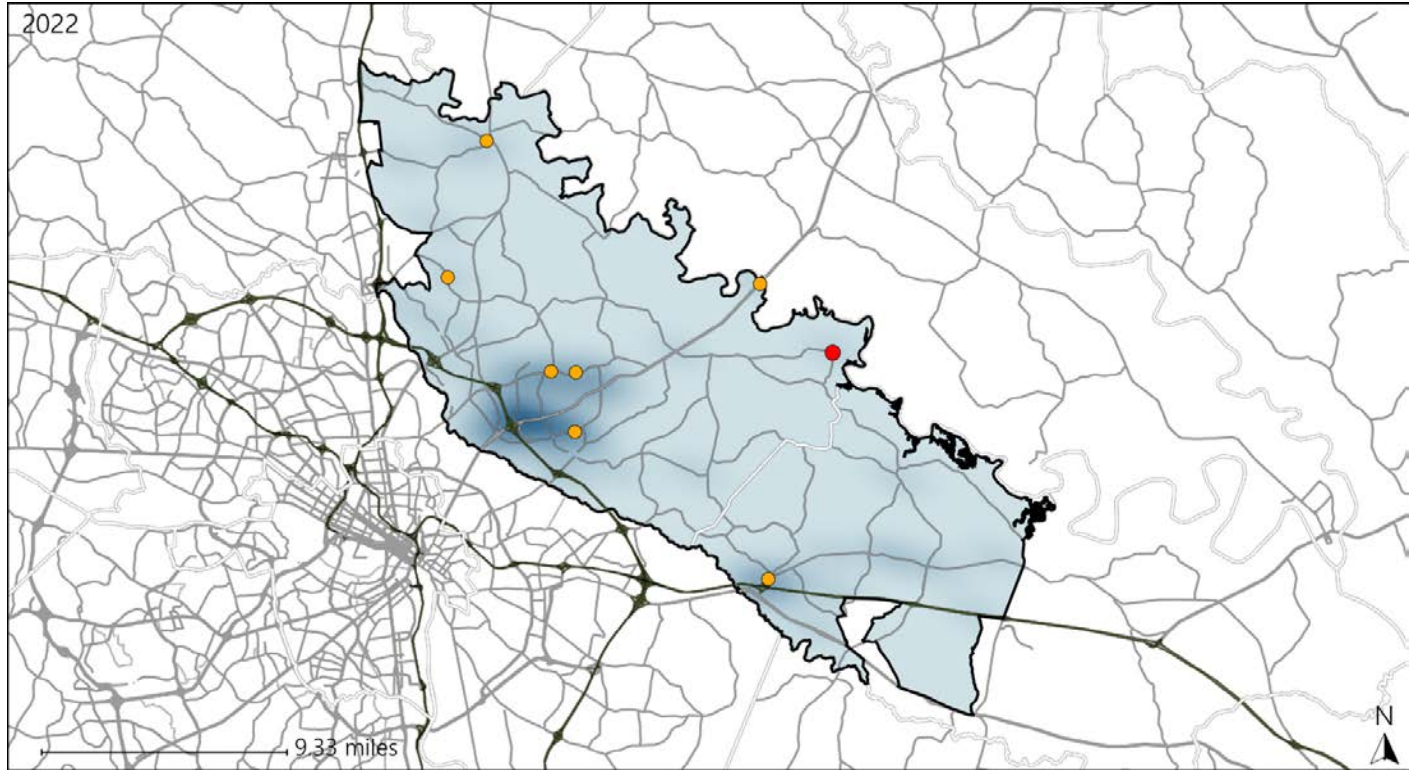


Available Crash Data - Calendar Year (CY)	CY 2019	CY 2020	CY 2021	CY 2022
Total Crashes	1300	1103	1180	1226
Fatal Crashes	11	12	13	8
Injury Crashes	343	299	309	332

Virginia House District 60 Alcohol Crash Statistics

Report Generated May, 2023

	Count	Highest Time Period(s)	Highest Day(s)	Highest Month(s)
Fatal Crashes	1	Midnight - 2:59am	Friday	February
Resulting Fatalities	1	(100%)	(100%)	(100%)
Serious Injury Crashes	7	6:00pm - 8:59pm	Saturday • Sunday	January • November
		(29%)	(58%)	(58%)



House District 60 Alcohol-Related Crashes

Interstate Crashes Non-interstate Crashes
 ● Fatal ● Fatal
 ⊕ Serious Injury ⊕ Serious Injury

The blue gradient represents the density of all alcohol-related crashes.

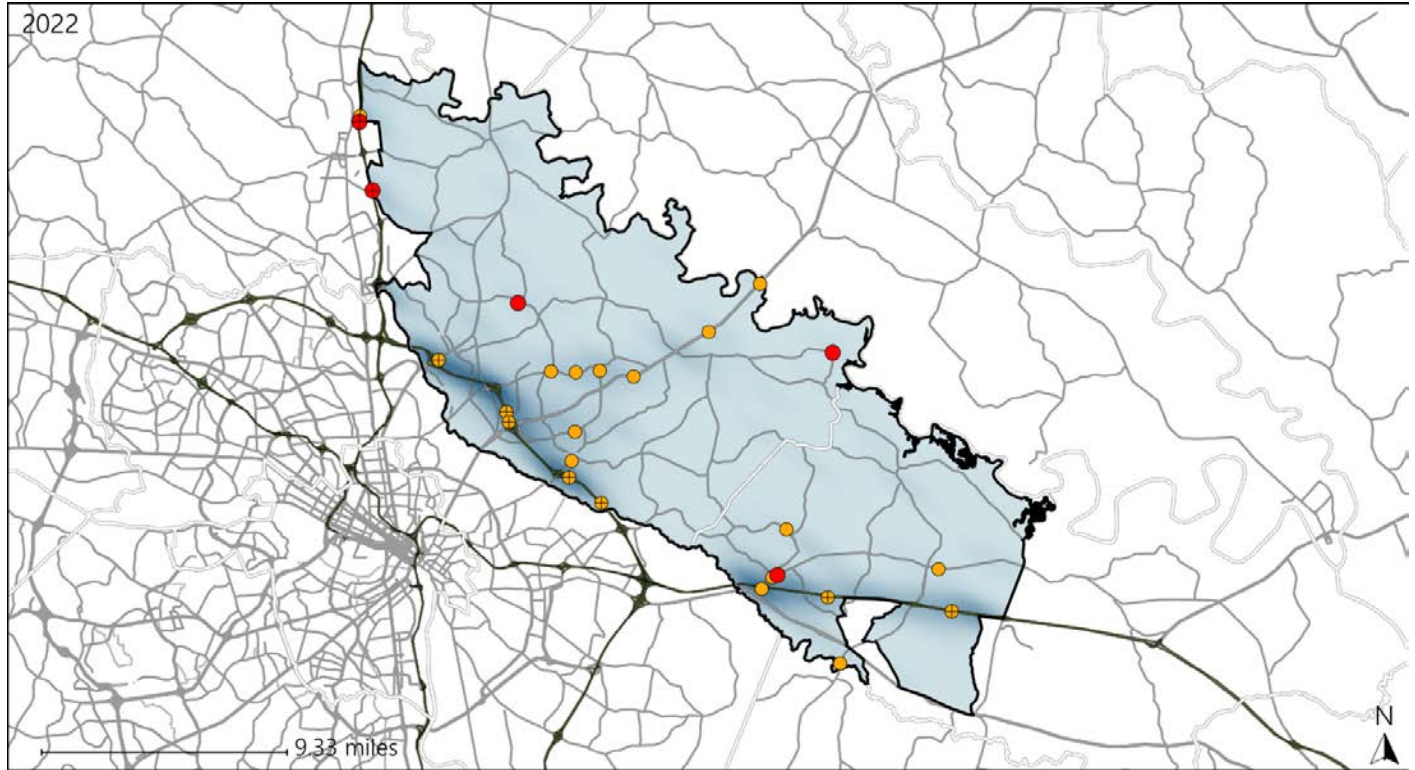


Available Crash Data - Calendar Year (CY)	CY 2019	CY 2020	CY 2021	CY 2022
Total Crashes	1300	1103	1180	1226
Fatal Crashes	11	12	13	8
Injury Crashes	343	299	309	332
Alcohol-Related Fatal Crashes	2	3	1	1
Percent of Alcohol-Related Fatal Crashes to Total Fatal Crashes	18%	25%	8%	13%
Alcohol-Related Injury Crashes	23	19	22	22
Percent of Alcohol-Related Injury Crashes to Total Injury Crashes	7%	6%	7%	7%

Virginia House District 60 Speed Crash Statistics

Report Generated May, 2023

	Count	Highest Time Period(s)	Highest Day(s)	Highest Month(s)
Fatal Crashes	5	Noon - 2:59pm	Tuesday	September
Resulting Fatalities	5	(40%)	(40%)	(40%)
Serious Injury Crashes	21	3:00pm - 5:59pm	Saturday	October
		(24%)	(29%)	(19%)



House District 60 Speed-Related Crashes

Interstate Crashes Non-interstate Crashes
 ● Fatal ● Fatal
 ⊕ Serious Injury ⊕ Serious Injury

The blue gradient represents the density of all speed-related crashes.

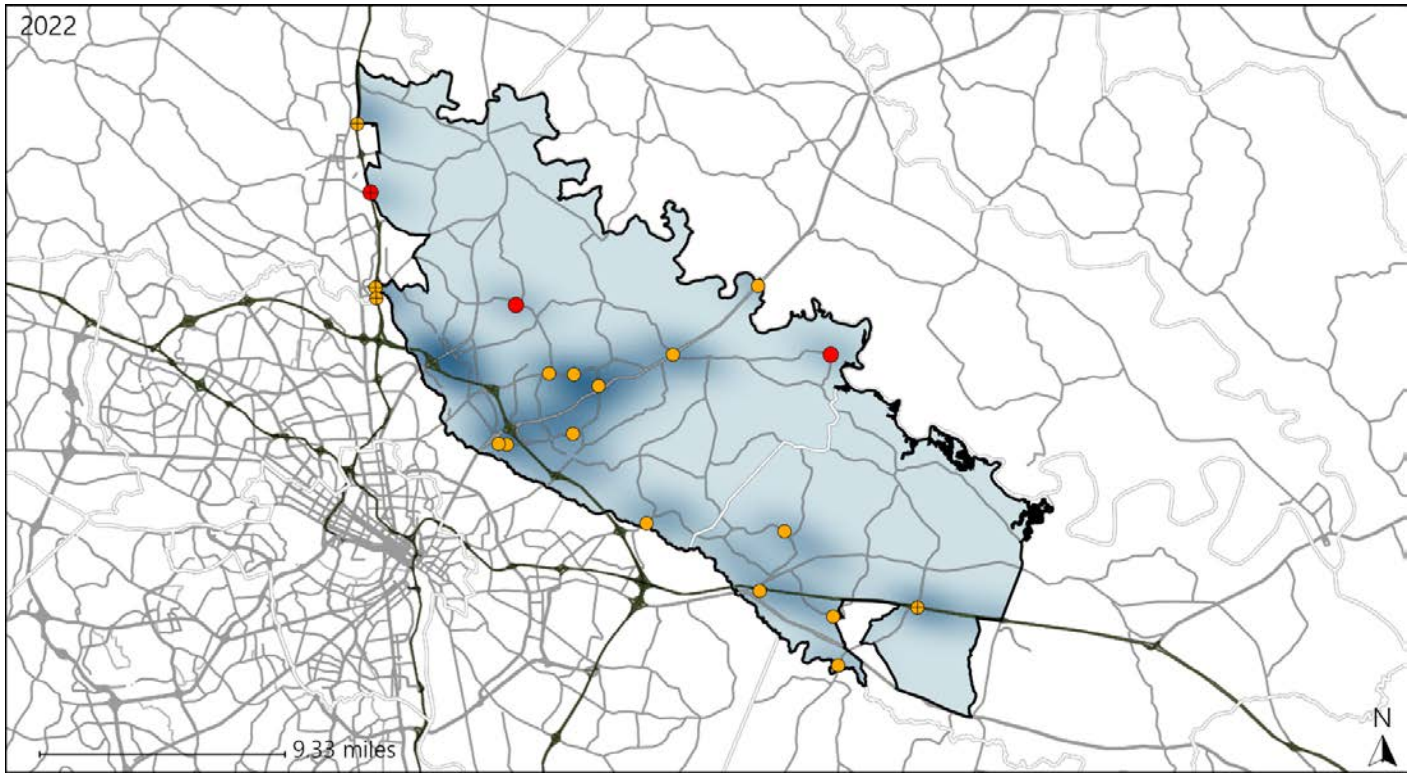


Available Crash Data - Calendar Year (CY)	CY 2019	CY 2020	CY 2021	CY 2022
Total Crashes	1300	1103	1180	1226
Fatal Crashes	11	12	13	8
Injury Crashes	343	299	309	332
Speed-Related Fatal Crashes	4	2	5	5
Percent of Speed-Related Fatal Crashes to Total Fatal Crashes	36%	17%	38%	63%
Speed-Related Injury Crashes	89	82	84	86
Percent of Speed-Related Injury Crashes to Total Injury Crashes	26%	27%	27%	26%

Virginia House District 60 Unrestrained Crash Statistics

Report Generated May, 2023

	Count	Highest Time Period(s)	Highest Day(s)	Highest Month(s)
Fatal Crashes	3	9:00am - 11:59am	Friday • Thursday	February • July
Unrestrained Fatalities	3	Midnight - 2:59am (66%)	(66%)	(66%)
Serious Injury Crashes	17	3:00pm - 5:59pm 6:00pm - 8:59pm (48%)	Tuesday (41%)	October • September (36%)



House District 60 Unrestrained-Related Crashes

- | | |
|--------------------|------------------------|
| Interstate Crashes | Non-interstate Crashes |
| ● Fatal | ● Fatal |
| ⊕ Serious Injury | ⊕ Serious Injury |

The blue gradient represents the density of all unrestrained-related crashes.

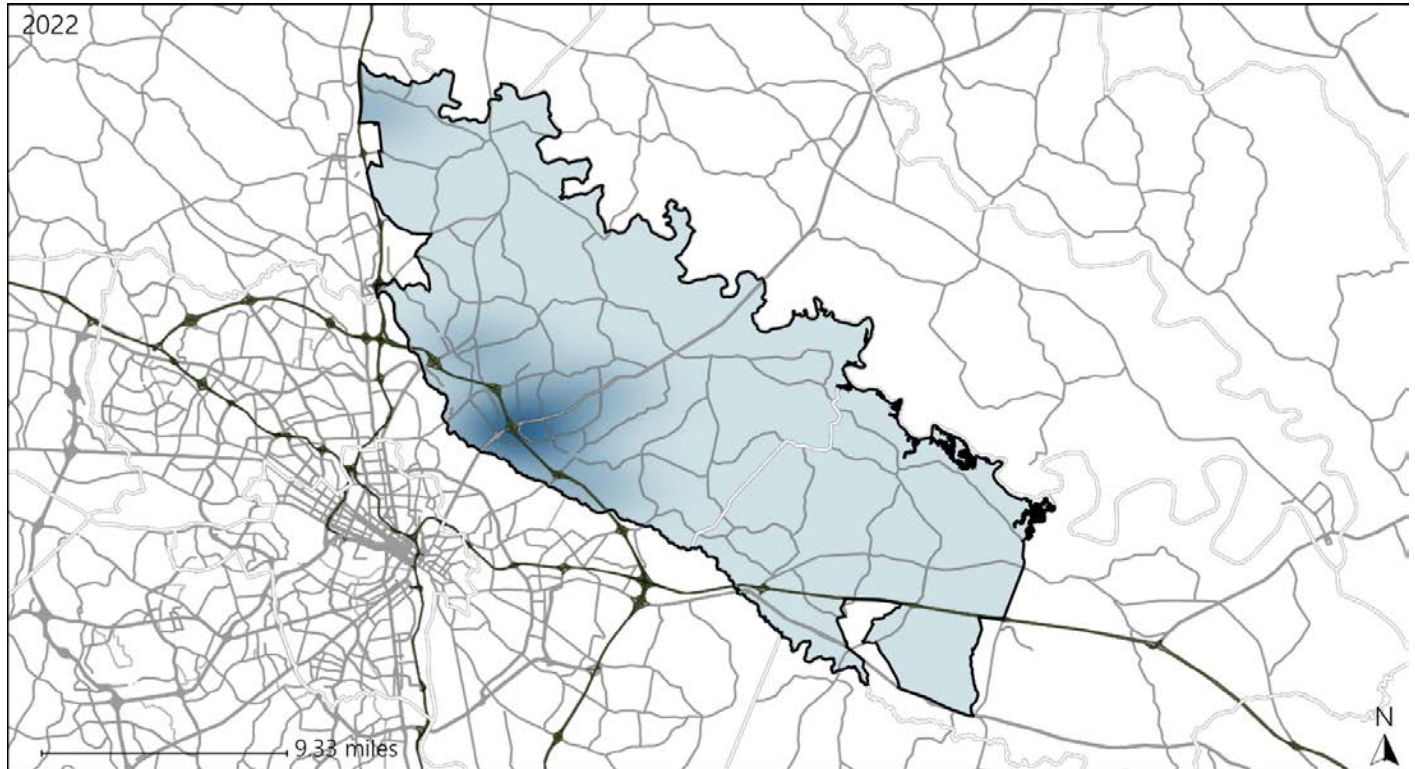


Available Crash Data - Calendar Year (CY)	CY 2019	CY 2020	CY 2021	CY 2022
Total Crashes	1300	1103	1180	1226
Fatalities	11	12	14	8
Injuries	540	430	462	492
Unrestrained Fatalities	4	3	4	3
Percent of Unrestrained Fatalities to Total Fatalities	36%	25%	29%	38%
Unrestrained Injuries	45	32	50	39
Percent of Unrestrained Injuries to Total Injuries	8%	7%	11%	8%

Virginia House District 60 Pedestrian Crash Statistics

Report Generated May, 2023

	Count	Highest Time Period(s)	Highest Day(s)	Highest Month(s)
Fatal Crashes	0	-	-	-
Pedestrian Fatalities	0	-	-	-
Serious Injury Crashes	0	-	-	-



House District 60 Pedestrian-Related Crashes

Interstate Crashes

Non-interstate Crashes

- Fatal
- Serious Injury

- Fatal
- Serious Injury

The blue gradient represents the density of all pedestrian-related crashes.

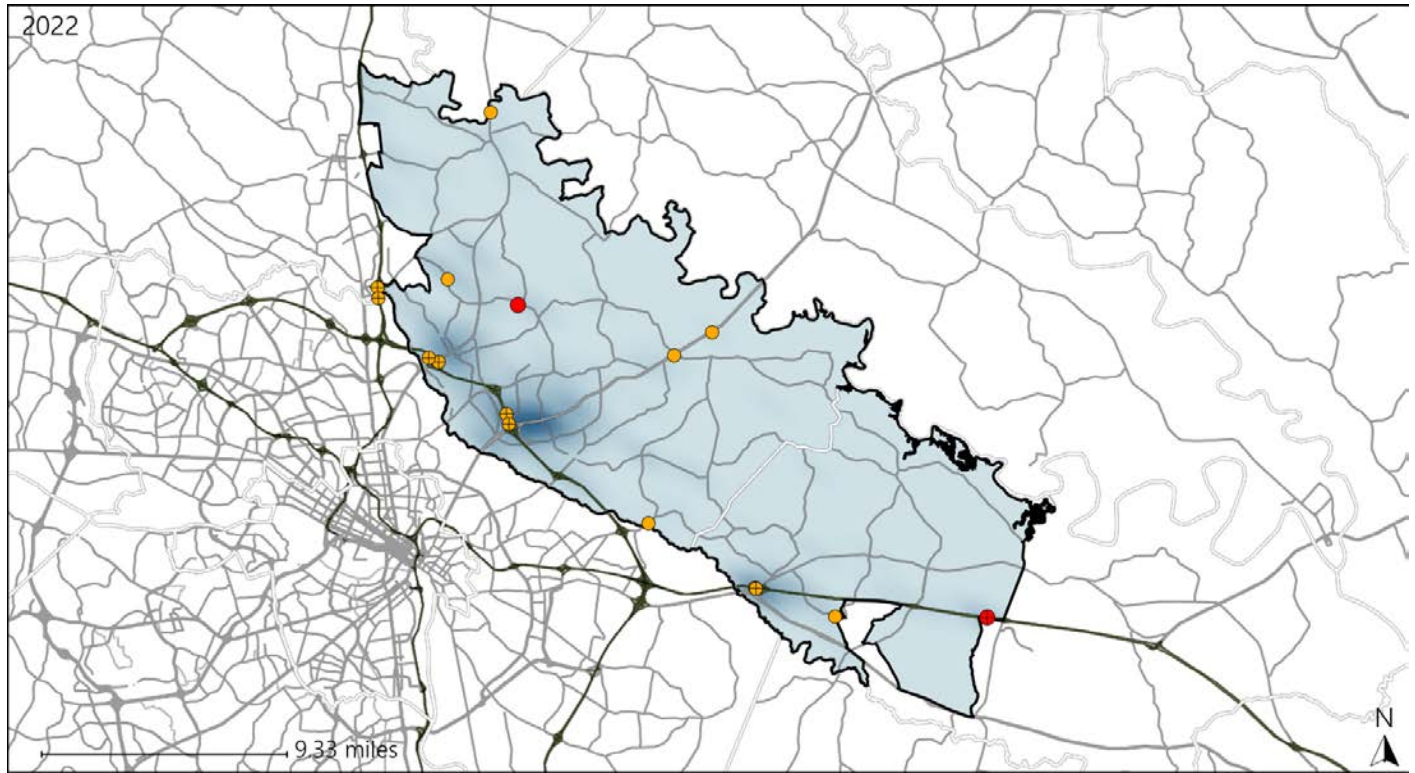


Available Crash Data - Calendar Year (CY)	CY 2019	CY 2020	CY 2021	CY 2022
Total Crashes	1300	1103	1180	1226
Fatal Crashes	11	12	13	8
Injury Crashes	343	299	309	332
Pedestrian-Related Fatal Crashes	1	2	0	0
Percent of Pedestrian-Related Fatal Crashes to Total Fatal Crashes	9%	17%	0%	0%
Pedestrian-Related Injury Crashes	3	4	5	7
Percent of Pedestrian-Related Injury Crashes to Total Injury Crashes	1%	1%	2%	2%

Virginia House District 60 Distracted Driving Crash Statistics

Report Generated May, 2023

	Count	Highest Time Period(s)	Highest Day(s)	Highest Month(s)
Fatal Crashes	2	3:00am - 5:59am	Friday • Thursday	April • September
Resulting Fatalities	2	9:00am - 11:59am (100%)	(100%)	(100%)
Serious Injury Crashes	14	3:00am - 5:59am Midnight - 2:59am (42%)	Tuesday (29%)	April • December (28%)



House District 60 Distracted Driving-Related Crashes

- | | |
|--------------------|------------------------|
| Interstate Crashes | Non-interstate Crashes |
| ● Fatal | ● Fatal |
| ⊕ Serious Injury | ● Serious Injury |

The blue gradient represents the density of all distracted driving-related crashes.



Available Crash Data - Calendar Year (CY)	CY 2019	CY 2020	CY 2021	CY 2022
Total Crashes	1300	1103	1180	1226
Fatal Crashes	11	12	13	8
Injury Crashes	343	299	309	332
Distracted Driving-Related Fatal Crashes	1	1	1	2
Percent of Distracted Driving-Related Fatal Crashes to Total Fatal Crashes	9%	8%	8%	25%
Distracted Driving-Related Injury Crashes	91	82	82	70
Percent of Distracted Driving-Related Injury Crashes to Total Injury Crashes	27%	27%	27%	21%