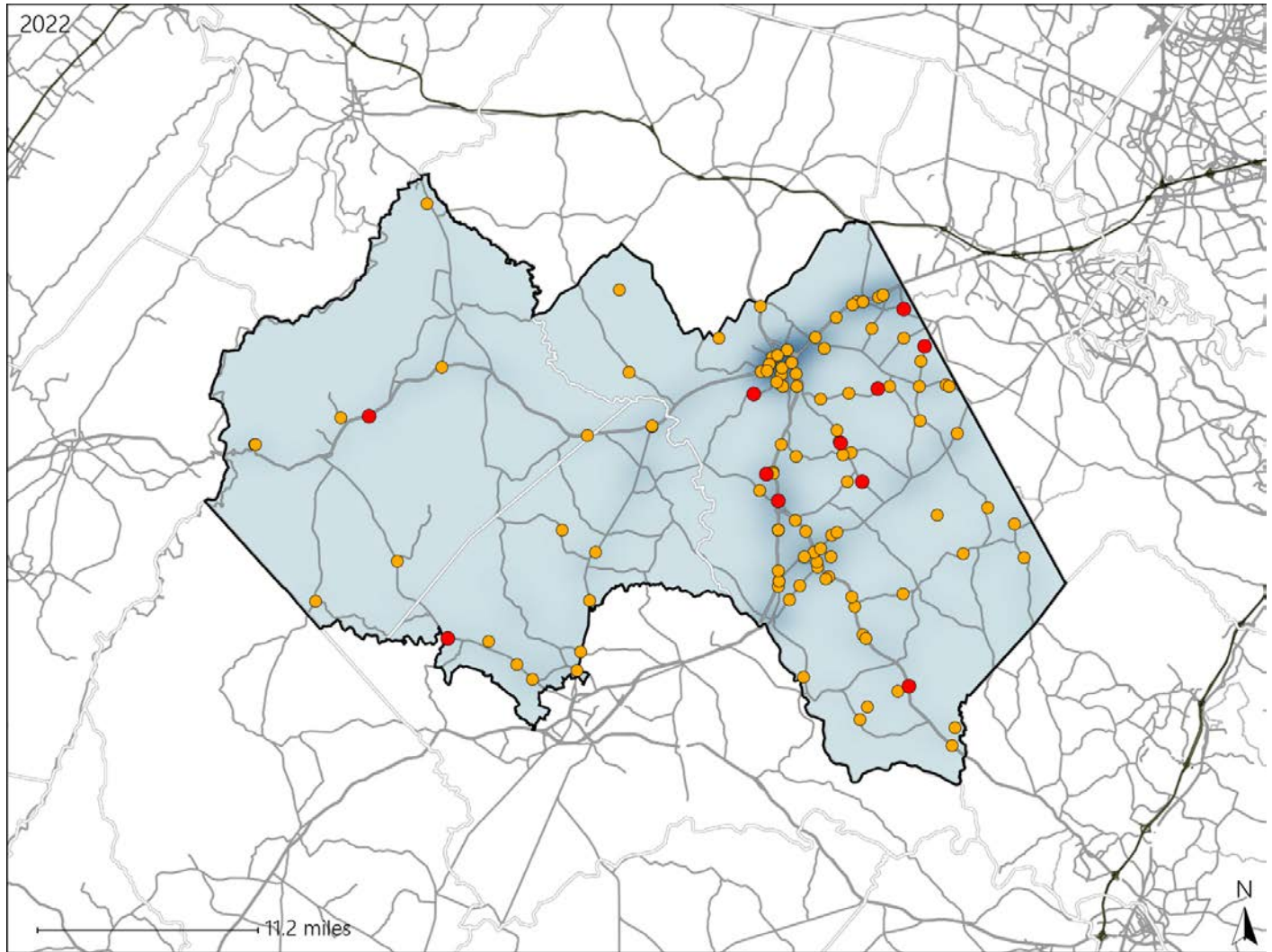


Virginia House District 61 Crash Statistics

Report Generated May, 2023

	Count	Highest Time Period(s)	Highest Day(s)	Highest Month(s)
Fatal Crashes	11	Noon - 2:59pm	Monday	February
Resulting Fatalities	13	(45%)	(27%)	(27%)
Serious Injury Crashes	105	Noon - 2:59pm	Saturday	April
		(24%)	(25%)	(11%)



House District 61 Crashes

Interstate Crashes

- Fatal
- Serious Injury

Non-interstate Crashes

- Fatal
- Serious Injury

The blue gradient represents the density of all crashes.

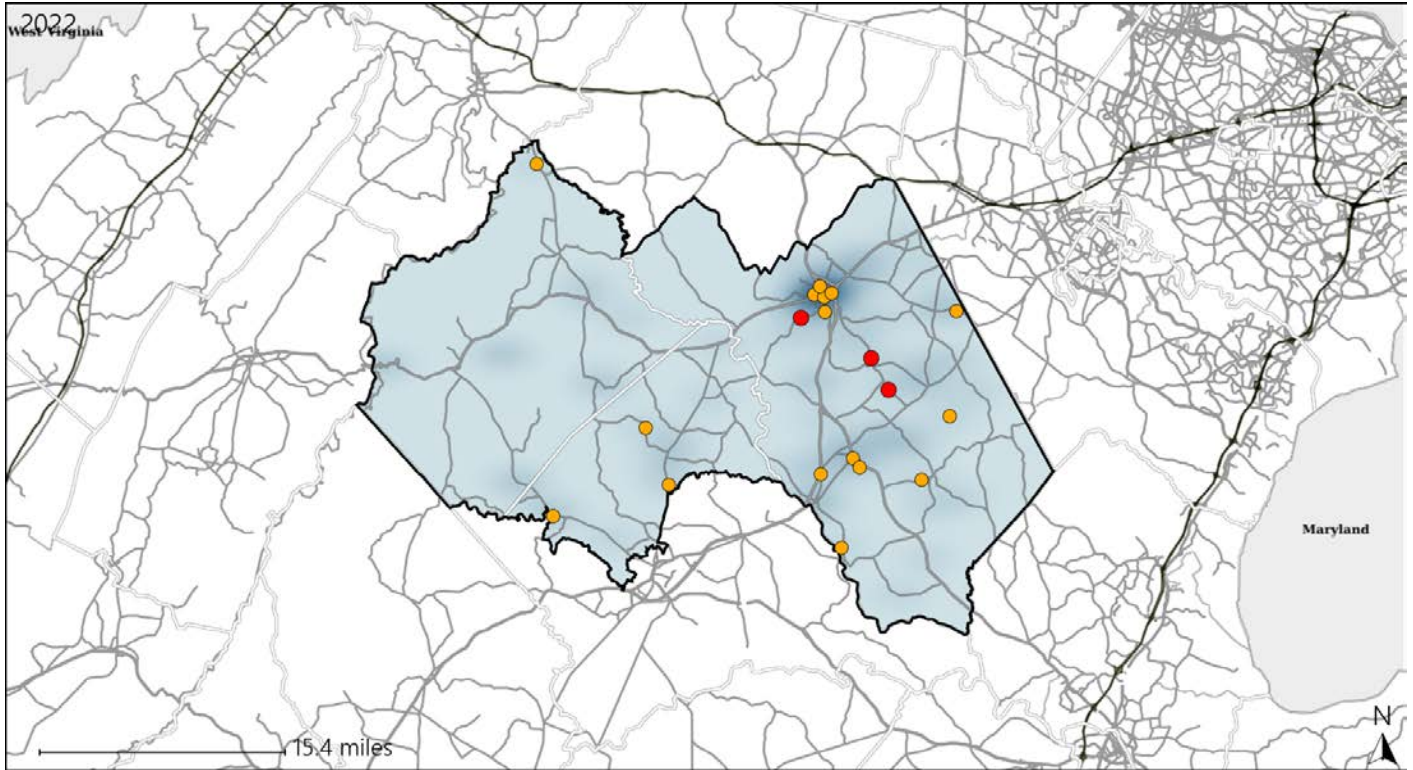


Available Crash Data - Calendar Year (CY)	CY 2019	CY 2020	CY 2021	CY 2022
Total Crashes	1490	1277	1377	1388
Fatal Crashes	13	10	10	11
Injury Crashes	509	448	445	448

Virginia House District 61 Alcohol Crash Statistics

Report Generated May, 2023

	Count	Highest Time Period(s)	Highest Day(s)	Highest Month(s)
Fatal Crashes	3	Noon - 2:59pm	Tuesday	February • June
Resulting Fatalities	3	(67%)	(67%)	(66%)
Serious Injury Crashes	16	Midnight - 2:59am	Saturday • Sunday	September
		(31%)	(50%)	(25%)



House District 61 Alcohol-Related Crashes

Interstate Crashes Non-interstate Crashes
 ● Fatal ● Fatal
 ● Serious Injury ● Serious Injury

The blue gradient represents the density of all alcohol-related crashes.

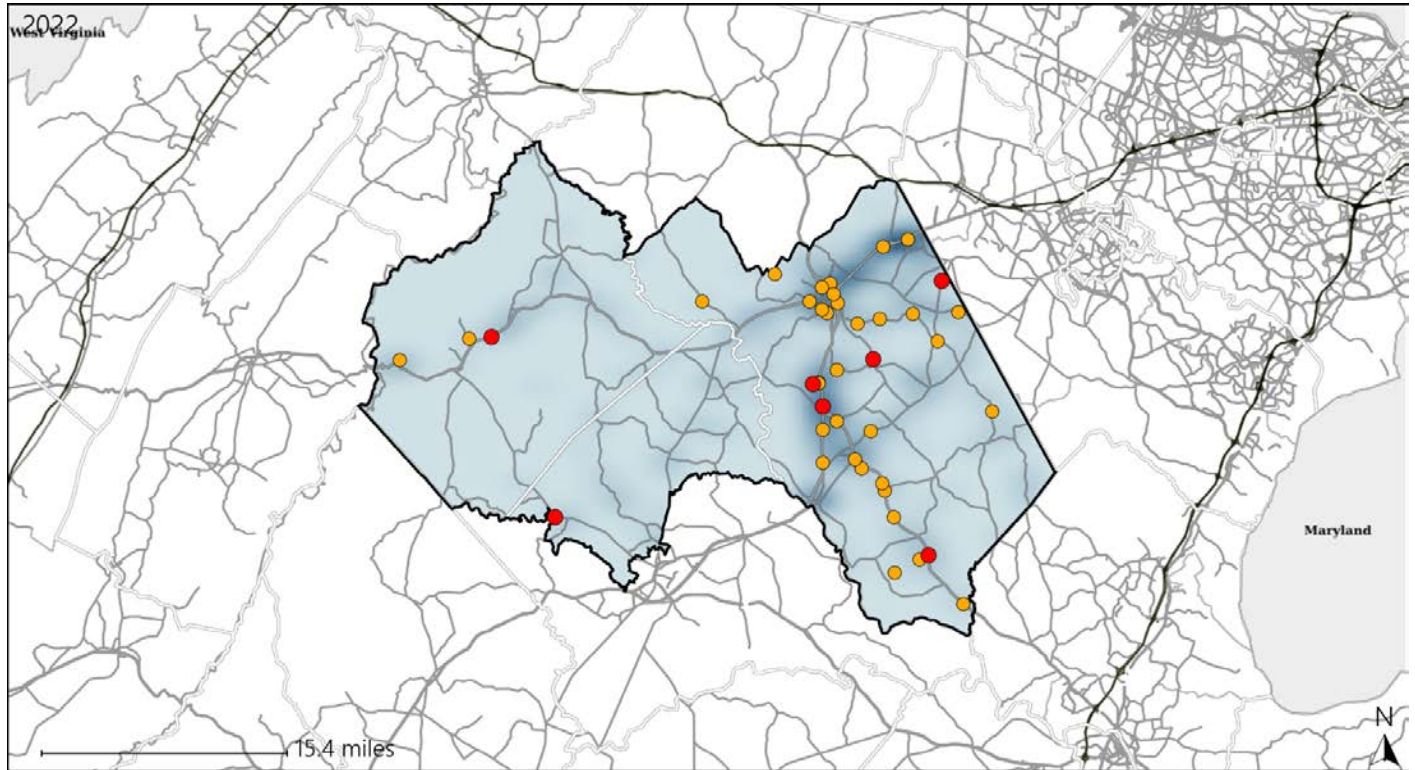


Available Crash Data - Calendar Year (CY)	CY 2019	CY 2020	CY 2021	CY 2022
Total Crashes	1490	1277	1377	1388
Fatal Crashes	13	10	10	11
Injury Crashes	509	448	445	448
Alcohol-Related Fatal Crashes	3	3	1	3
Percent of Alcohol-Related Fatal Crashes to Total Fatal Crashes	23%	30%	10%	27%
Alcohol-Related Injury Crashes	51	48	41	43
Percent of Alcohol-Related Injury Crashes to Total Injury Crashes	10%	11%	9%	10%

Virginia House District 61 Speed Crash Statistics

Report Generated May, 2023

	Count	Highest Time Period(s)	Highest Day(s)	Highest Month(s)
Fatal Crashes	7	9:00am - 11:59am	Monday - Wednesday	February - September
Resulting Fatalities	9	9:00pm - 11:59pm (86%)	(58%)	(58%)
Serious Injury Crashes	34	Noon - 2:59pm (24%)	Saturday (29%)	September (21%)



House District 61 Speed-Related Crashes

Interstate Crashes Non-interstate Crashes
 ● Fatal ● Fatal
 ● Serious Injury ● Serious Injury

The blue gradient represents the density of all speed-related crashes.

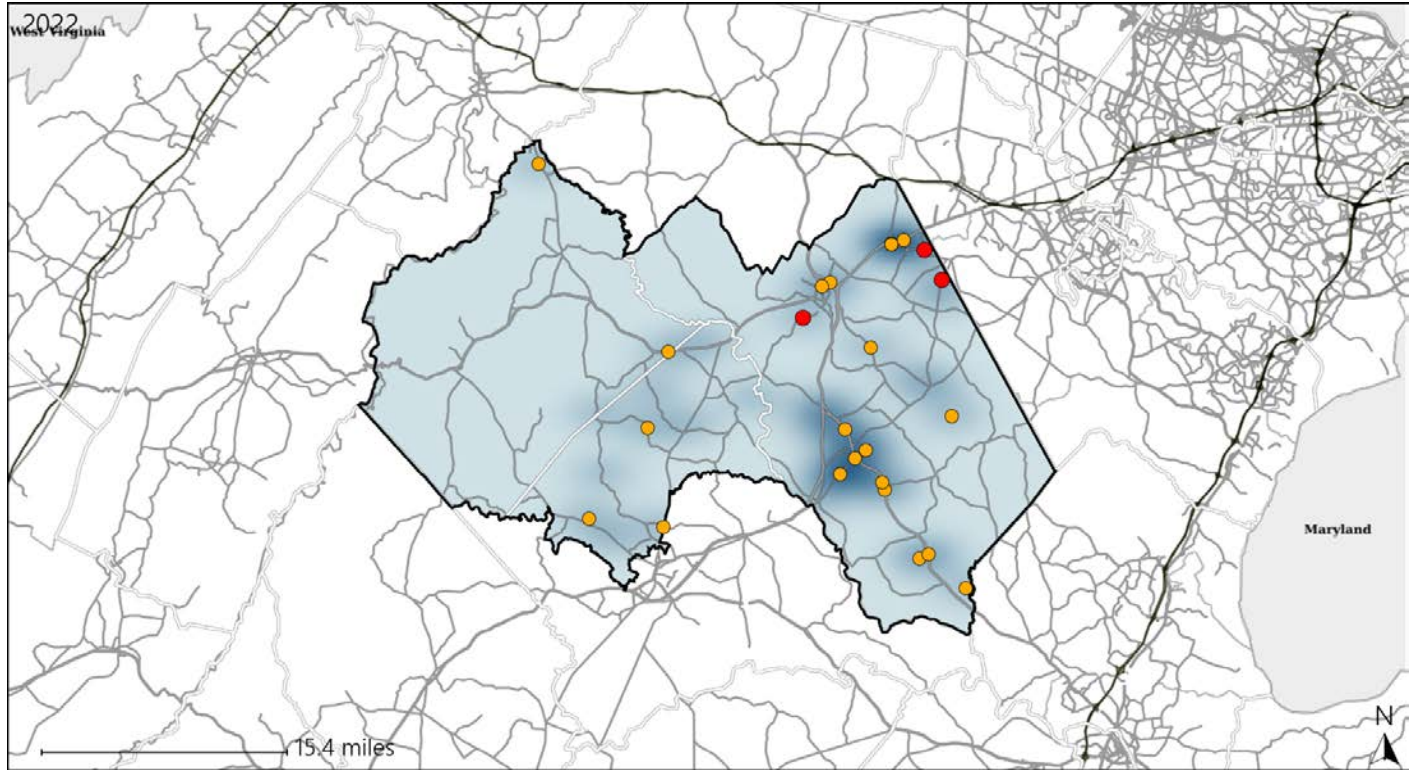


Available Crash Data - Calendar Year (CY)	CY 2019	CY 2020	CY 2021	CY 2022
Total Crashes	1490	1277	1377	1388
Fatal Crashes	13	10	10	11
Injury Crashes	509	448	445	448
Speed-Related Fatal Crashes	4	6	5	7
Percent of Speed-Related Fatal Crashes to Total Fatal Crashes	31%	60%	50%	64%
Speed-Related Injury Crashes	118	114	110	116
Percent of Speed-Related Injury Crashes to Total Injury Crashes	23%	25%	25%	26%

Virginia House District 61 Unrestrained Crash Statistics

Report Generated May, 2023

	Count	Highest Time Period(s)	Highest Day(s)	Highest Month(s)
Fatal Crashes	3	Noon - 2:59pm	Monday + Tuesday	July
Unrestrained Fatalities	3	(67%)	(66%)	(67%)
Serious Injury Crashes	22	6:00pm - 8:59pm	Saturday	March + September
		(23%)	(27%)	(36%)



House District 61 Unrestrained-Related Crashes

- | | |
|--------------------|------------------------|
| Interstate Crashes | Non-interstate Crashes |
| Fatal | Fatal |
| Serious Injury | Serious Injury |

The blue gradient represents the density of all unrestrained-related crashes.

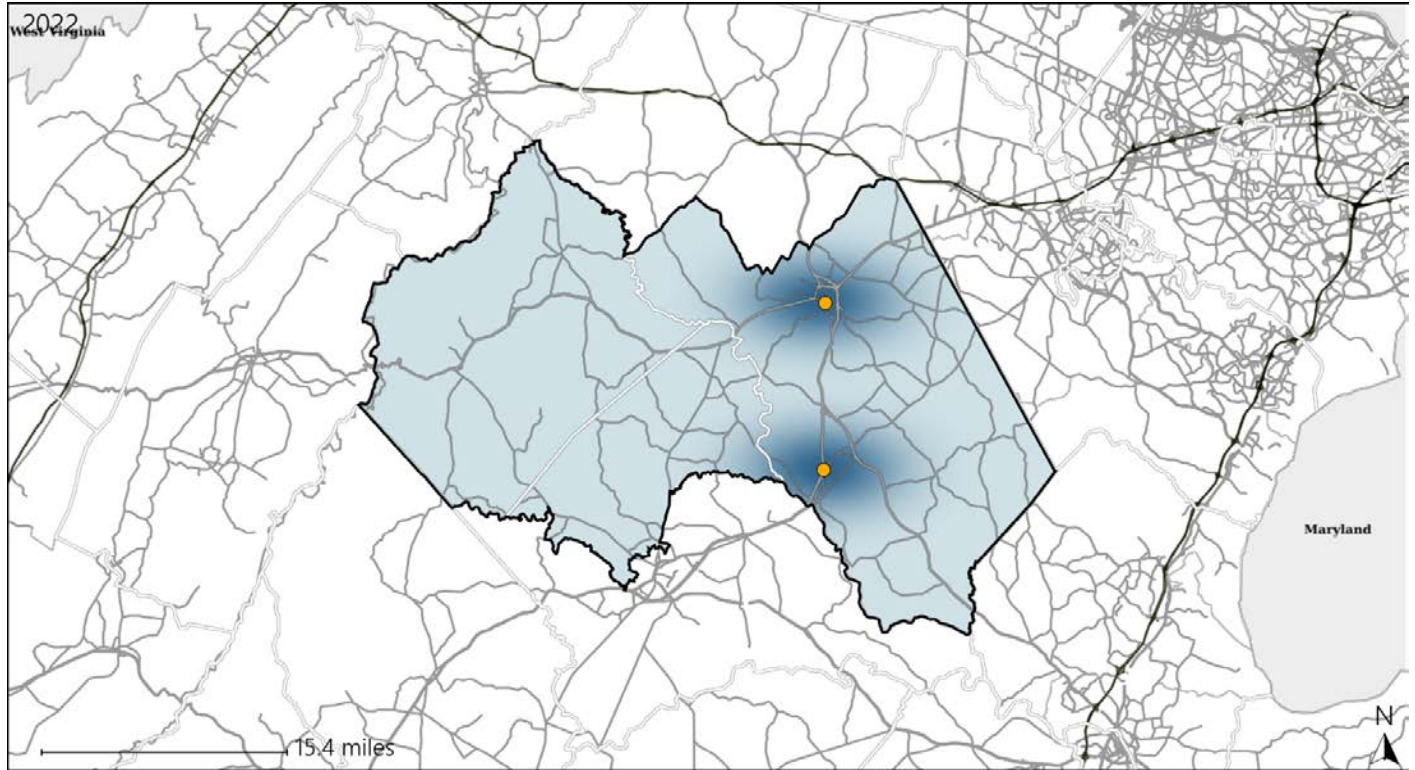


Available Crash Data - Calendar Year (CY)	CY 2019	CY 2020	CY 2021	CY 2022
Total Crashes	1490	1277	1377	1388
Fatalities	13	12	10	13
Injuries	727	643	644	603
Unrestrained Fatalities	5	5	5	3
Percent of Unrestrained Fatalities to Total Fatalities	38%	42%	50%	23%
Unrestrained Injuries	66	61	44	51
Percent of Unrestrained Injuries to Total Injuries	9%	9%	7%	8%

Virginia House District 61 Pedestrian Crash Statistics

Report Generated May, 2023

	Count	Highest Time Period(s)	Highest Day(s)	Highest Month(s)
Fatal Crashes	0	-	-	-
Pedestrian Fatalities	0	-	-	-
Serious Injury Crashes	3	9:00pm - 11:59pm (67%)	Saturday (67%)	August (67%)



House District 61 Pedestrian-Related Crashes

- | | |
|--------------------|------------------------|
| Interstate Crashes | Non-interstate Crashes |
| Fatal | Fatal |
| Serious Injury | Serious Injury |

The blue gradient represents the density of all pedestrian-related crashes.

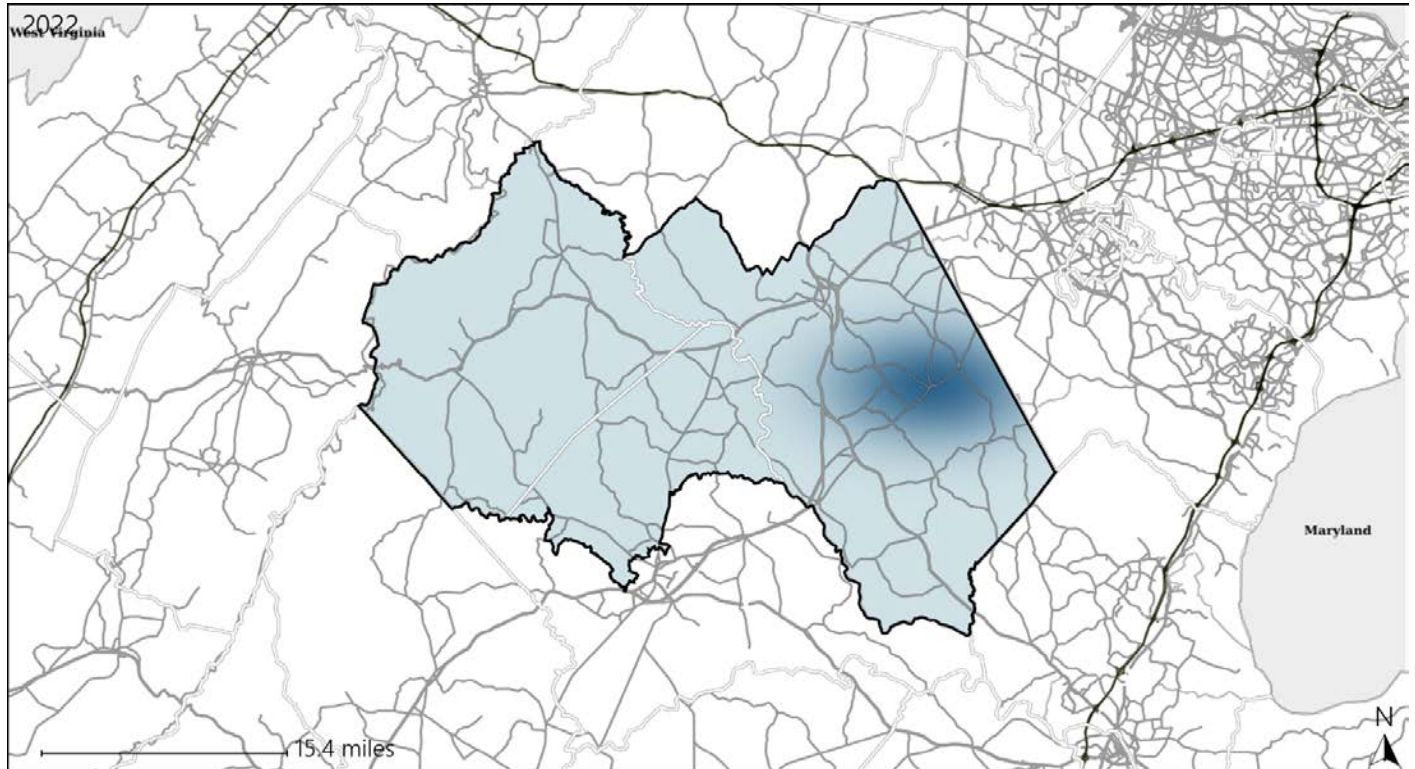


Available Crash Data - Calendar Year (CY)	CY 2019	CY 2020	CY 2021	CY 2022
Total Crashes	1490	1277	1377	1388
Fatal Crashes	13	10	10	11
Injury Crashes	509	448	445	448
Pedestrian-Related Fatal Crashes	1	1	1	0
Percent of Pedestrian-Related Fatal Crashes to Total Fatal Crashes	8%	10%	10%	0%
Pedestrian-Related Injury Crashes	1	5	6	4
Percent of Pedestrian-Related Injury Crashes to Total Injury Crashes	0%	1%	1%	1%

Virginia House District 61 Bicycle Crash Statistics

Report Generated May, 2023

	Count	Highest Time Period(s)	Highest Day(s)	Highest Month(s)
Fatal Crashes	0	-	-	-
Bicycle Fatalities	0	-	-	-
Serious Injury Crashes	0	-	-	-



House District 61 Bicycle-Related Crashes

Interstate Crashes Non-interstate Crashes
 ● Fatal ● Fatal
 ⊕ Serious Injury ⊕ Serious Injury

The blue gradient represents the density of all bicycle-related crashes.

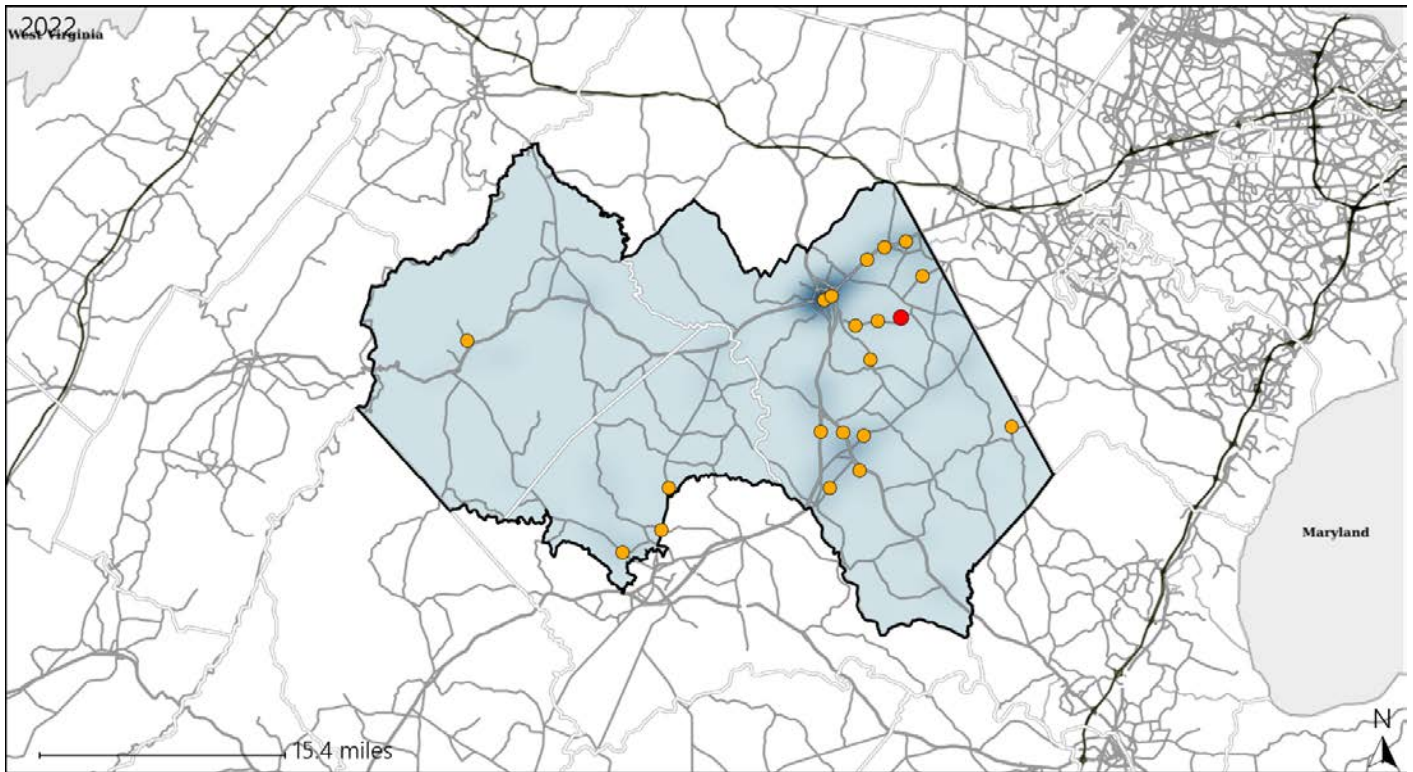


Available Crash Data - Calendar Year (CY)	CY 2019	CY 2020	CY 2021	CY 2022
Total Crashes	1490	1277	1377	1388
Fatal Crashes	13	10	10	11
Injury Crashes	509	448	445	448
Bicycle-Related Fatal Crashes	1	0	0	0
Percent of Bicycle-Related Fatal Crashes to Total Fatal Crashes	8%	0%	0%	0%
Bicycle-Related Injury Crashes	1	4	6	1
Percent of Bicycle-Related Injury Crashes to Total Injury Crashes	0%	1%	1%	0%

Virginia House District 61 Distracted Driving Crash Statistics

Report Generated May, 2023

	Count	Highest Time Period(s)	Highest Day(s)	Highest Month(s)
Fatal Crashes	1	Noon - 2:59pm	Thursday	February
Resulting Fatalities	1	(100%)	(100%)	(100%)
Serious Injury Crashes	19	9:00pm - 11:59pm Noon - 2:59pm	Saturday	August
		(42%)	(37%)	(16%)



House District 61 Distracted Driving-Related Crashes

- | | |
|--------------------|------------------------|
| Interstate Crashes | Non-interstate Crashes |
| ● Fatal | ● Fatal |
| ⊕ Serious Injury | ⊕ Serious Injury |

The blue gradient represents the density of all distracted driving-related crashes.



Available Crash Data - Calendar Year (CY)	CY 2019	CY 2020	CY 2021	CY 2022
Total Crashes	1490	1277	1377	1388
Fatal Crashes	13	10	10	11
Injury Crashes	509	448	445	448
Distracted Driving-Related Fatal Crashes	2	0	1	1
Percent of Distracted Driving-Related Fatal Crashes to Total Fatal Crashes	15%	0%	10%	9%
Distracted Driving-Related Injury Crashes	84	68	81	85
Percent of Distracted Driving-Related Injury Crashes to Total Injury Crashes	17%	15%	18%	19%