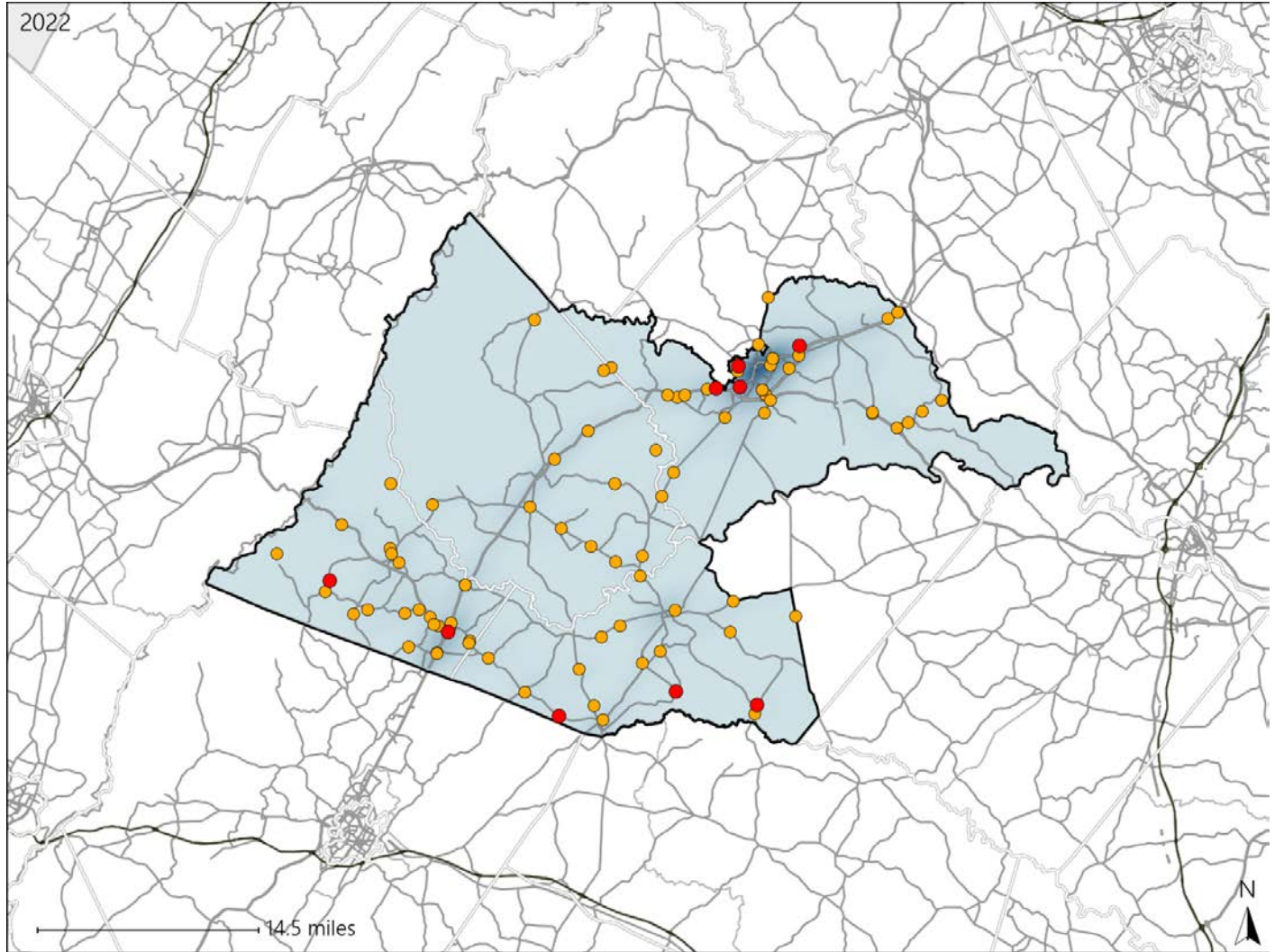


# Virginia House District 62 Crash Statistics

Report Generated May, 2023

	Count	Highest Time Period(s)	Highest Day(s)	Highest Month(s)
<b>Fatal Crashes</b>	<b>9</b>	<b>Midnight - 2:59am</b>	<b>Saturday</b>	<b>February</b>
<b>Resulting Fatalities</b>	<b>9</b>	(44%)	(44%)	(33%)
<b>Serious Injury Crashes</b>	<b>79</b>	<b>3:00pm - 5:59pm</b>	<b>Sunday</b>	<b>March</b>
		(24%)	(23%)	(15%)



### House District 62 Crashes

Interstate Crashes

- Fatal
- Serious Injury

Non-interstate Crashes

- Fatal
- Serious Injury

The blue gradient represents the density of all crashes.

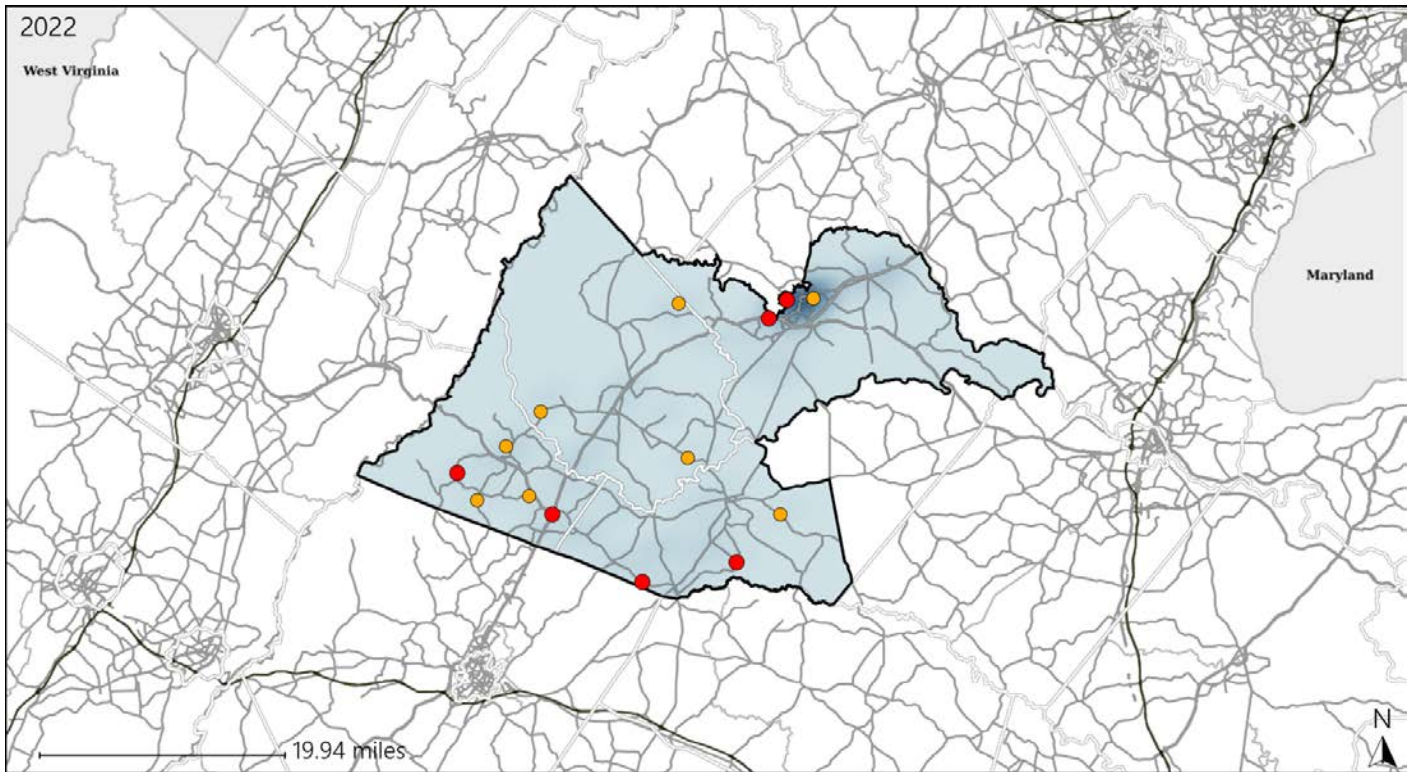


Available Crash Data - Calendar Year (CY)	CY 2019	CY 2020	CY 2021	CY 2022
<b>Total Crashes</b>	<b>1393</b>	<b>1210</b>	<b>1280</b>	<b>1392</b>
<b>Fatal Crashes</b>	<b>18</b>	<b>15</b>	<b>8</b>	<b>9</b>
<b>Injury Crashes</b>	<b>557</b>	<b>453</b>	<b>498</b>	<b>565</b>

# Virginia House District 62 Alcohol Crash Statistics

Report Generated May, 2023

	Count	Highest Time Period(s)	Highest Day(s)	Highest Month(s)
<b>Fatal Crashes</b>	<b>6</b>	<b>Midnight - 2:59am</b>	<b>Sunday</b>	<b>February</b>
<b>Resulting Fatalities</b>	<b>6</b>	(50%)	(50%)	(50%)
<b>Serious Injury Crashes</b>	<b>8</b>	<b>6:00pm - 8:59pm</b> <b>9:00pm - 11:59pm</b>	<b>Friday • Sunday</b>	<b>July • March</b>
		(50%)	(76%)	(50%)



## House District 62 Alcohol-Related Crashes

Interstate Crashes                      Non-interstate Crashes  
 ● Fatal                                      ● Fatal  
 ⊕ Serious Injury                          ⊕ Serious Injury

The blue gradient represents the density of all alcohol-related crashes.



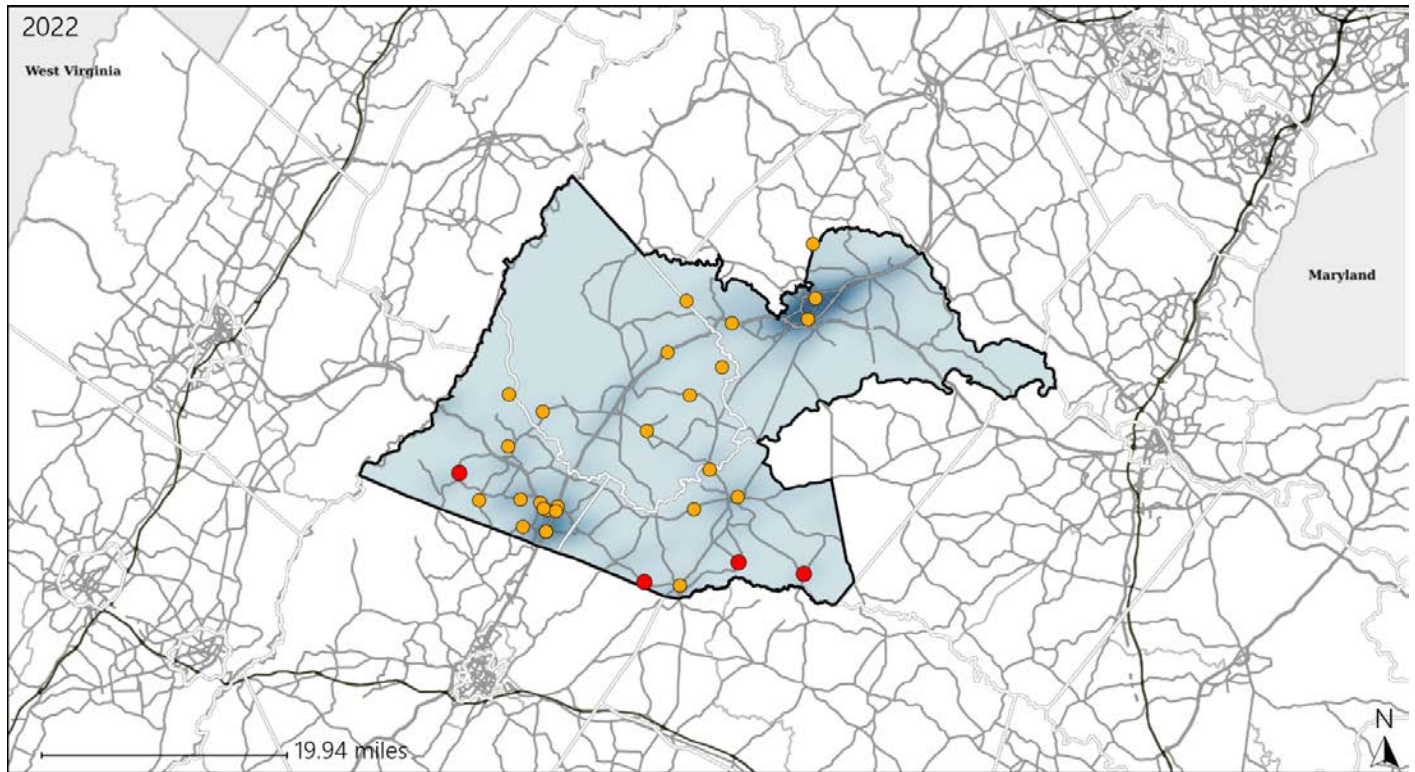
Available Crash Data - Calendar Year (CY)	CY 2019	CY 2020	CY 2021	CY 2022
Total Crashes	1393	1210	1280	1392
Fatal Crashes	18	15	8	9
Injury Crashes	557	453	498	565
Alcohol-Related Fatal Crashes	4	5	3	6
Percent of Alcohol-Related Fatal Crashes to Total Fatal Crashes	22%	33%	38%	67%
Alcohol-Related Injury Crashes	39	49	35	40
Percent of Alcohol-Related Injury Crashes to Total Injury Crashes	7%	11%	7%	7%



# Virginia House District 62 Speed Crash Statistics

Report Generated May, 2023

	Count	Highest Time Period(s)	Highest Day(s)	Highest Month(s)
<b>Fatal Crashes</b>	<b>4</b>	<b>Midnight - 2:59am</b>	<b>Saturday • Sunday</b>	<b>July</b>
<b>Resulting Fatalities</b>	<b>4</b>	(75%)	(100%)	(50%)
<b>Serious Injury Crashes</b>	<b>26</b>	<b>3:00pm - 5:59pm 6:00pm - 8:59pm</b>	<b>Friday</b>	<b>March • October</b>
		(62%)	(31%)	(38%)



## House District 62 Speed-Related Crashes

Interstate Crashes                      Non-interstate Crashes  
 ● Fatal                                      ● Fatal  
 ⊕ Serious Injury                          ⊕ Serious Injury

The blue gradient represents the density of all speed-related crashes.

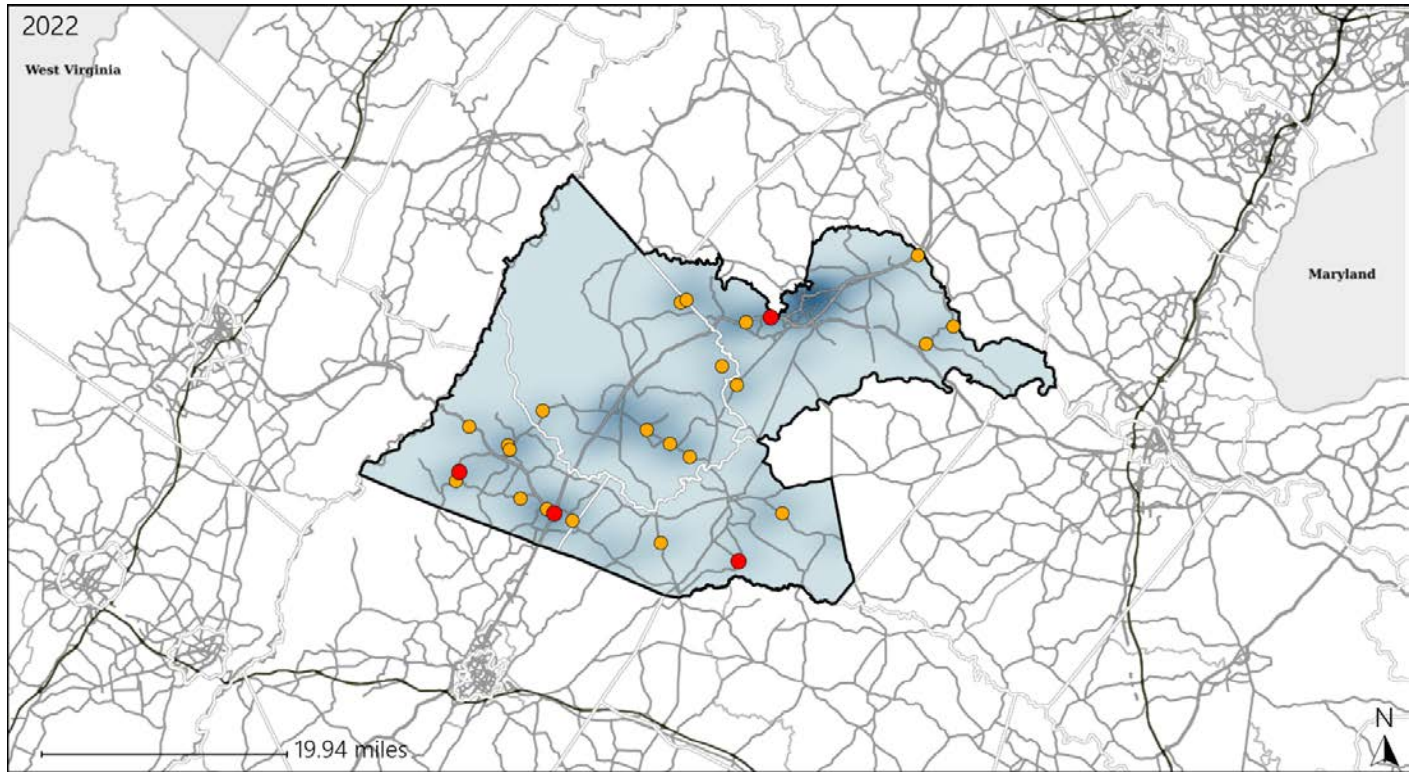


Available Crash Data - Calendar Year (CY)	CY 2019	CY 2020	CY 2021	CY 2022
Total Crashes	1393	1210	1280	1392
Fatal Crashes	18	15	8	9
Injury Crashes	557	453	498	565
Speed-Related Fatal Crashes	7	5	3	4
Percent of Speed-Related Fatal Crashes to Total Fatal Crashes	39%	33%	38%	44%
Speed-Related Injury Crashes	106	121	118	138
Percent of Speed-Related Injury Crashes to Total Injury Crashes	19%	27%	24%	24%

# Virginia House District 62 Unrestrained Crash Statistics

Report Generated May, 2023

	Count	Highest Time Period(s)	Highest Day(s)	Highest Month(s)
<b>Fatal Crashes</b>	<b>4</b>	<b>Midnight - 2:59am</b>	<b>Sunday</b>	<b>February</b>
<b>Unrestrained Fatalities</b>	<b>4</b>	(50%)	(50%)	(50%)
<b>Serious Injury Crashes</b>	<b>21</b>	<b>9:00pm - 11:59pm</b>	<b>Sunday</b>	<b>March</b>
		(24%)	(29%)	(19%)



## House District 62 Unrestrained-Related Crashes

Interstate Crashes

Non-interstate Crashes

- Fatal
- Serious Injury

- Fatal
- Serious Injury

The blue gradient represents the density of all unrestrained-related crashes.

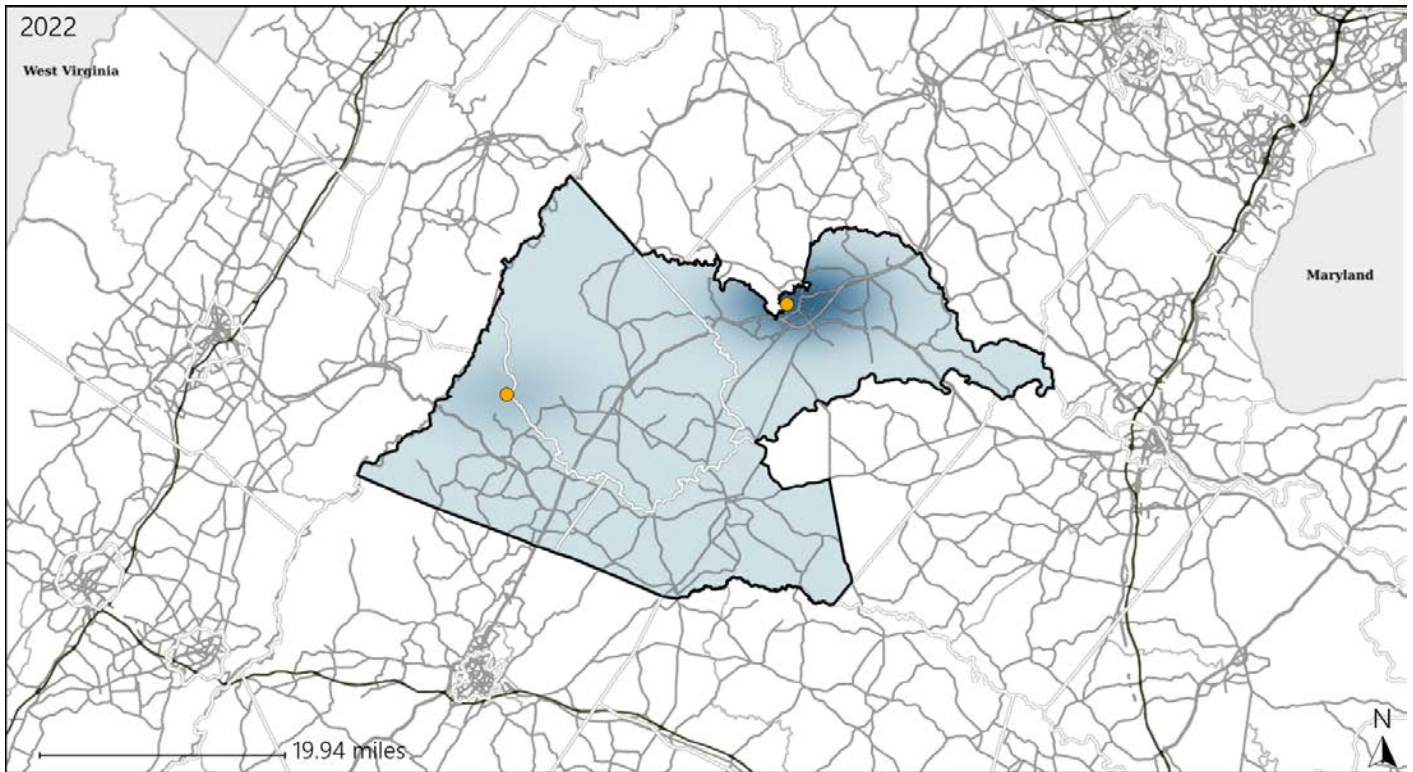


Available Crash Data - Calendar Year (CY)	CY 2019	CY 2020	CY 2021	CY 2022
<b>Total Crashes</b>	<b>1393</b>	<b>1210</b>	<b>1280</b>	<b>1392</b>
<b>Fatalities</b>	<b>18</b>	<b>17</b>	<b>9</b>	<b>9</b>
<b>Injuries</b>	<b>869</b>	<b>687</b>	<b>807</b>	<b>928</b>
<b>Unrestrained Fatalities</b>	<b>3</b>	<b>10</b>	<b>2</b>	<b>4</b>
<b>Percent of Unrestrained Fatalities to Total Fatalities</b>	<b>17%</b>	<b>59%</b>	<b>22%</b>	<b>44%</b>
<b>Unrestrained Injuries</b>	<b>55</b>	<b>79</b>	<b>52</b>	<b>68</b>
<b>Percent of Unrestrained Injuries to Total Injuries</b>	<b>6%</b>	<b>11%</b>	<b>6%</b>	<b>7%</b>

# Virginia House District 62 Bicycle Crash Statistics

Report Generated May, 2023

	Count	Highest Time Period(s)	Highest Day(s)	Highest Month(s)
<b>Fatal Crashes</b>	<b>0</b>	-	-	-
<b>Bicycle Fatalities</b>	<b>0</b>	-	-	-
<b>Serious Injury Crashes</b>	<b>2</b>	<b>3:00pm - 5:59pm</b> <b>Noon - 2:59pm</b> <b>(100%)</b>	<b>Saturday • Sunday</b> <b>(100%)</b>	<b>October • September</b> <b>(100%)</b>



### House District 62 Bicycle-Related Crashes

- |                    |                        |
|--------------------|------------------------|
| Interstate Crashes | Non-interstate Crashes |
| Fatal              | Fatal                  |
| Serious Injury     | Serious Injury         |

The blue gradient represents the density of all bicycle-related crashes.



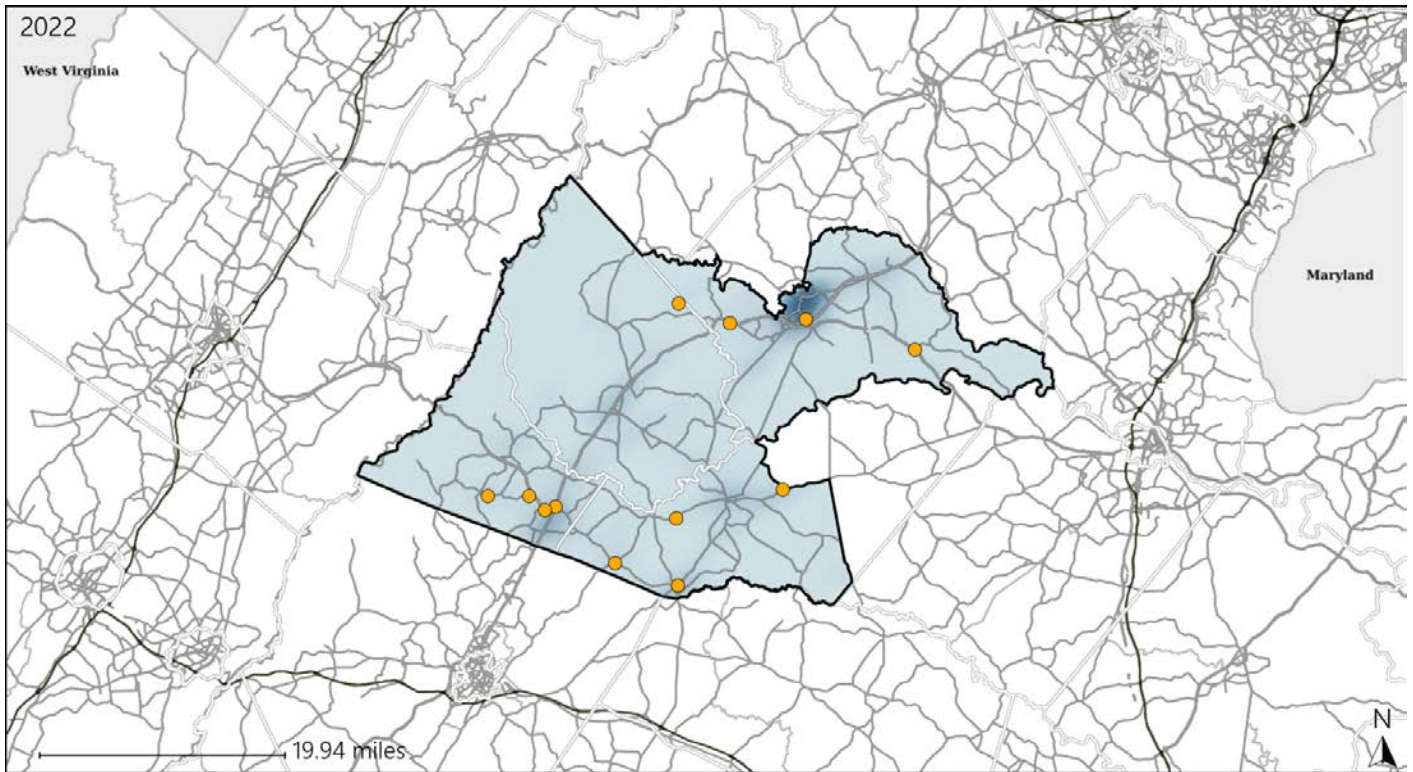
Available Crash Data - Calendar Year (CY)	CY 2019	CY 2020	CY 2021	CY 2022
Total Crashes	1393	1210	1280	1392
Fatal Crashes	18	15	8	9
Injury Crashes	557	453	498	565
Bicycle-Related Fatal Crashes	0	0	0	0
Percent of Bicycle-Related Fatal Crashes to Total Fatal Crashes	0%	0%	0%	0%
Bicycle-Related Injury Crashes	3	0	2	5
Percent of Bicycle-Related Injury Crashes to Total Injury Crashes	1%	0%	0%	1%



# Virginia House District 62 Distracted Driving Crash Statistics

Report Generated May, 2023

	Count	Highest Time Period(s)	Highest Day(s)	Highest Month(s)
<b>Fatal Crashes</b>	<b>0</b>	-	-	-
<b>Resulting Fatalities</b>	<b>0</b>	-	-	-
<b>Serious Injury Crashes</b>	<b>12</b>	3:00pm - 5:59pm Noon - 2:59pm (50%)	Tuesday (33%)	July (25%)



## House District 62 Distracted Driving-Related Crashes

- |  |  |
|--|--|
| Interstate Crashes                                   | Non-interstate Crashes                               |
| <span style="color: red;">●</span> Fatal             | <span style="color: red;">●</span> Fatal             |
| <span style="color: orange;">●</span> Serious Injury | <span style="color: orange;">●</span> Serious Injury |

The blue gradient represents the density of all distracted driving-related crashes.



Available Crash Data - Calendar Year (CY)	CY 2019	CY 2020	CY 2021	CY 2022
Total Crashes	1393	1210	1280	1392
Fatal Crashes	18	15	8	9
Injury Crashes	557	453	498	565
Distracted Driving-Related Fatal Crashes	2	4	1	0
Percent of Distracted Driving-Related Fatal Crashes to Total Fatal Crashes	11%	27%	13%	0%
Distracted Driving-Related Injury Crashes	91	69	70	93
Percent of Distracted Driving-Related Injury Crashes to Total Injury Crashes	16%	15%	14%	16%