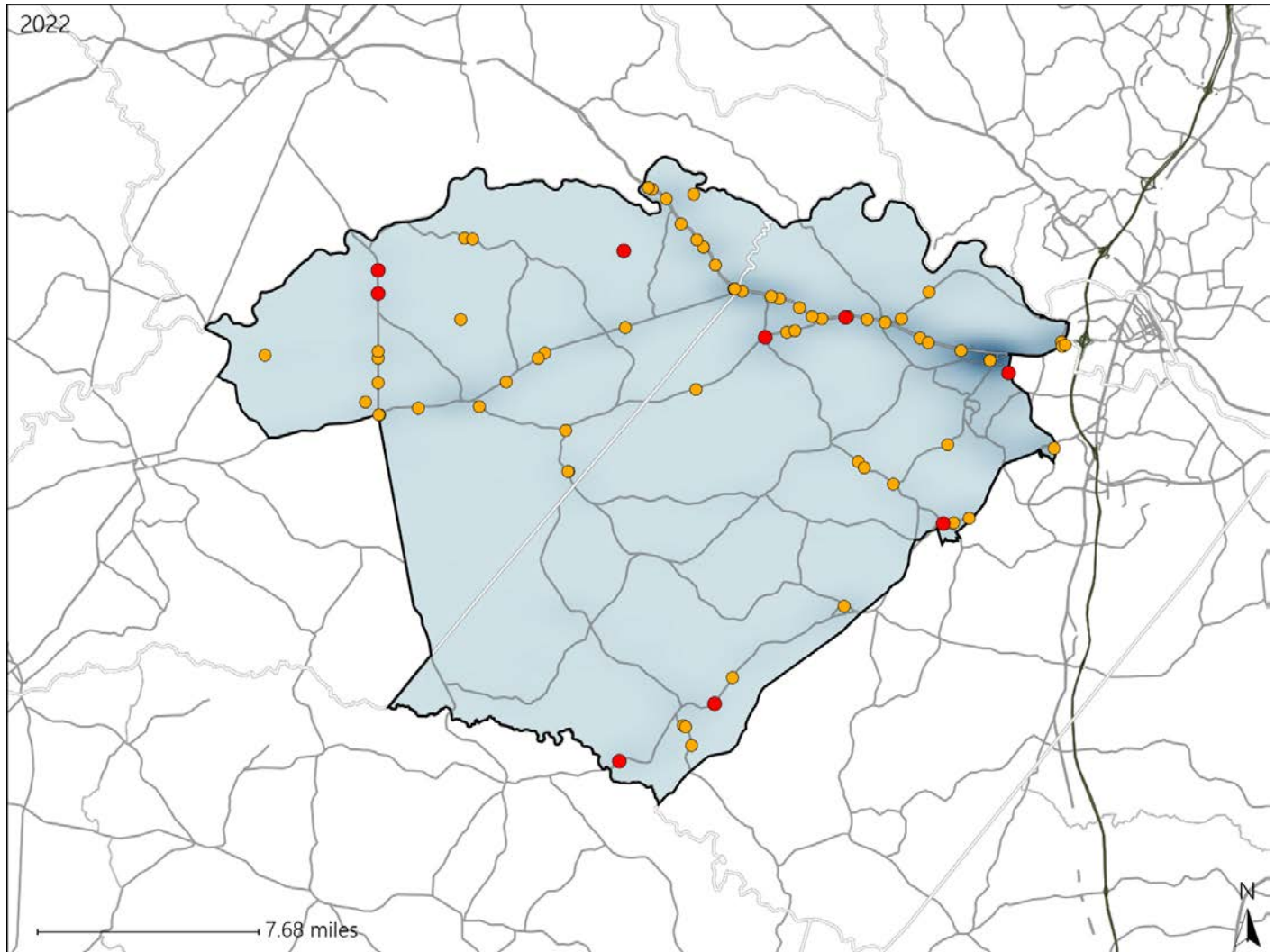


Virginia House District 63 Crash Statistics

Report Generated May, 2023

	Count	Highest Time Period(s)	Highest Day(s)	Highest Month(s)
Fatal Crashes	9	9:00am - 11:59am	Tuesday	May
Resulting Fatalities	9	9:00pm - 11:59pm (44%)	(33%)	(44%)
Serious Injury Crashes	63	3:00pm - 5:59pm Noon - 2:59pm (38%)	Saturday (25%)	May (17%)



House District 63 Crashes

Interstate Crashes

- Fatal
- Serious Injury

Non-interstate Crashes

- Fatal
- Serious Injury

The blue gradient represents the density of all crashes.

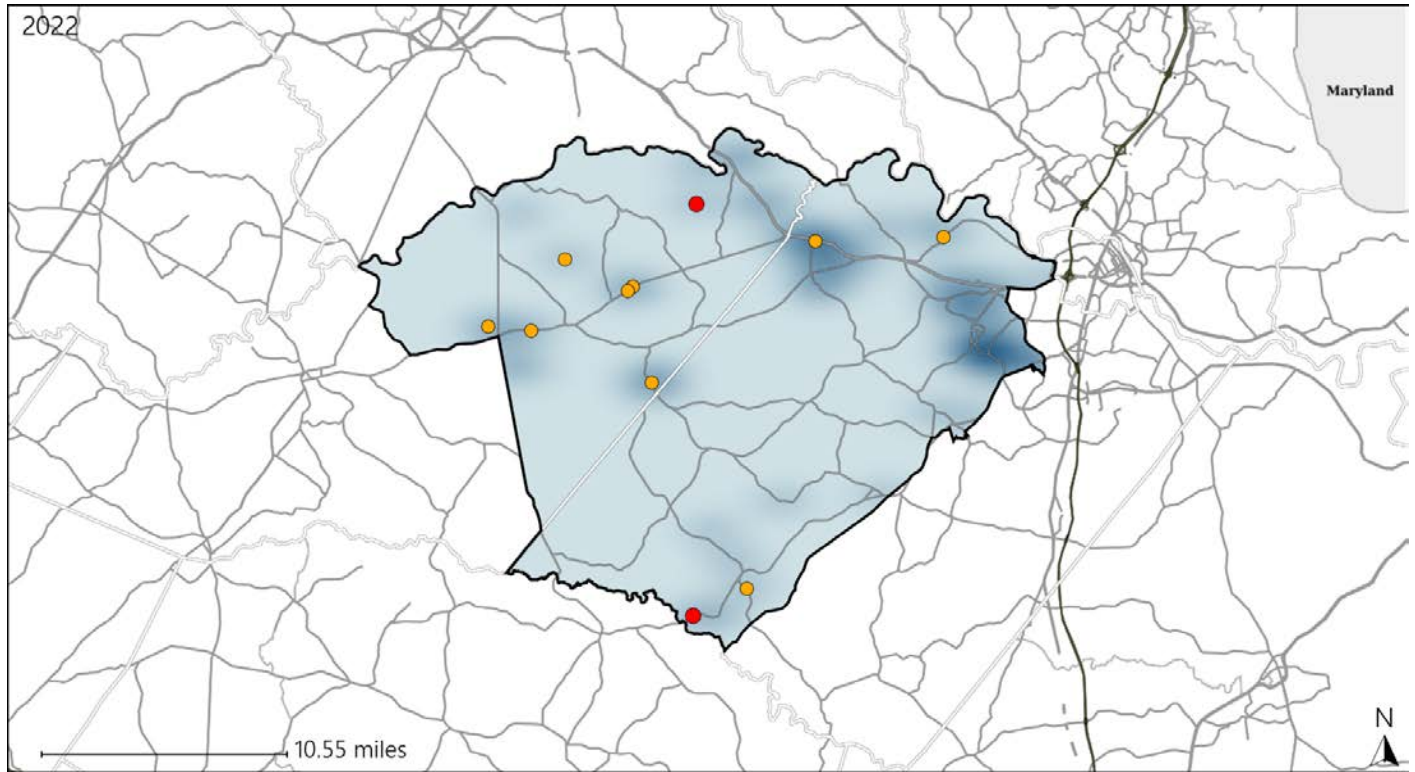


Available Crash Data - Calendar Year (CY)	CY 2019	CY 2020	CY 2021	CY 2022
Total Crashes	825	751	818	839
Fatal Crashes	10	11	8	9
Injury Crashes	239	199	212	210

Virginia House District 63 Alcohol Crash Statistics

Report Generated May, 2023

	Count	Highest Time Period(s)	Highest Day(s)	Highest Month(s)
Fatal Crashes	2	Midnight - 2:59am	Saturday • Thursday	June • May
Resulting Fatalities	2	(100%)	(100%)	(100%)
Serious Injury Crashes	9	9:00pm - 11:59pm	Saturday	March
		(44%)	(33%)	(22%)



House District 63 Alcohol-Related Crashes

Interstate Crashes Non-interstate Crashes
 ● Fatal ● Fatal
 ● Serious Injury ● Serious Injury

The blue gradient represents the density of all alcohol-related crashes.

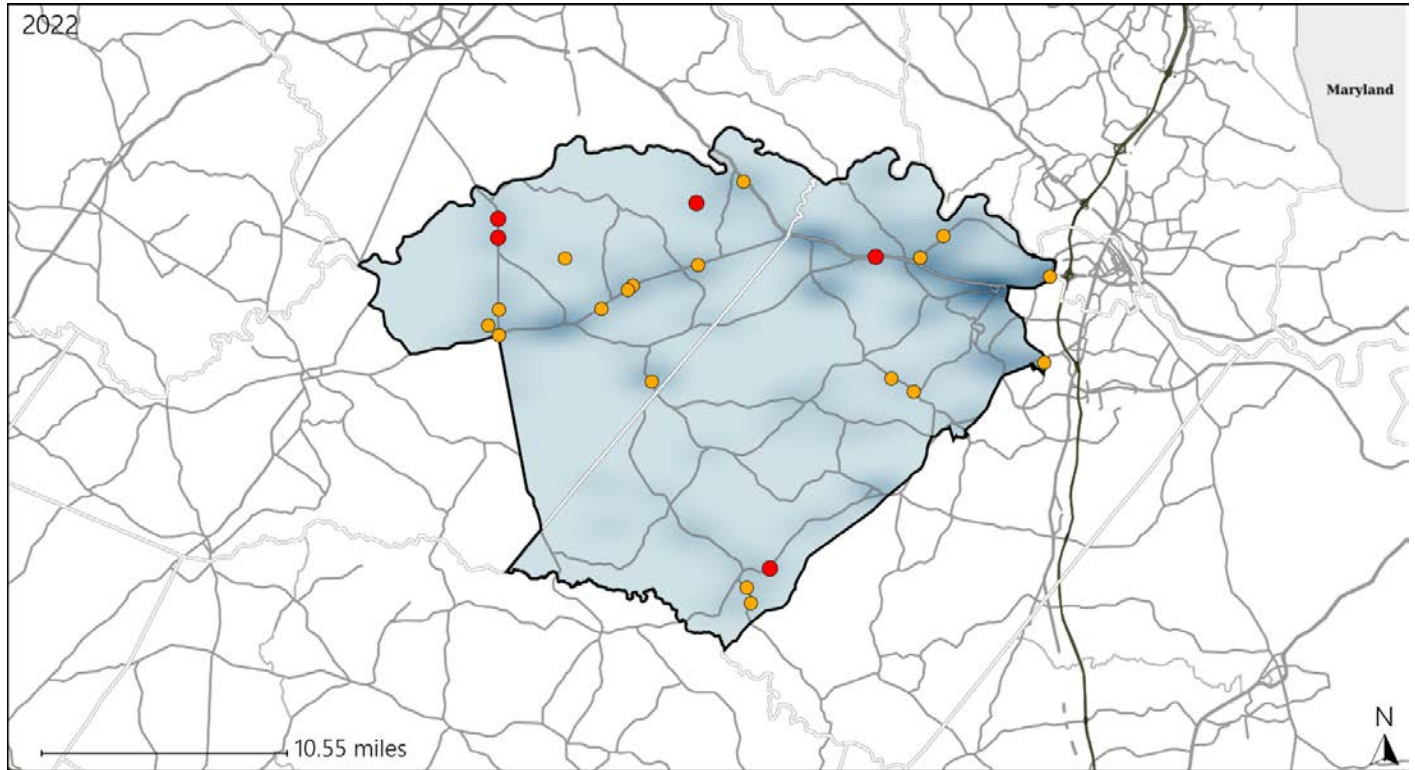


Available Crash Data - Calendar Year (CY)	CY 2019	CY 2020	CY 2021	CY 2022
Total Crashes	825	751	818	839
Fatal Crashes	10	11	8	9
Injury Crashes	239	199	212	210
Alcohol-Related Fatal Crashes	4	1	3	2
Percent of Alcohol-Related Fatal Crashes to Total Fatal Crashes	40%	9%	38%	22%
Alcohol-Related Injury Crashes	28	12	19	21
Percent of Alcohol-Related Injury Crashes to Total Injury Crashes	12%	6%	9%	10%

Virginia House District 63 Speed Crash Statistics

Report Generated May, 2023

	Count	Highest Time Period(s)	Highest Day(s)	Highest Month(s)
Fatal Crashes	5	6:00am - 8:59am	Saturday	November
Resulting Fatalities	5	6:00pm - 8:59pm (40%)	(40%)	(60%)
Serious Injury Crashes	18	6:00pm - 8:59pm (22%)	Saturday (39%)	February • May (44%)



House District 63 Speed-Related Crashes

Interstate Crashes Non-interstate Crashes
 ● Fatal ● Fatal
 ● Serious Injury ● Serious Injury

The blue gradient represents the density of all speed-related crashes.

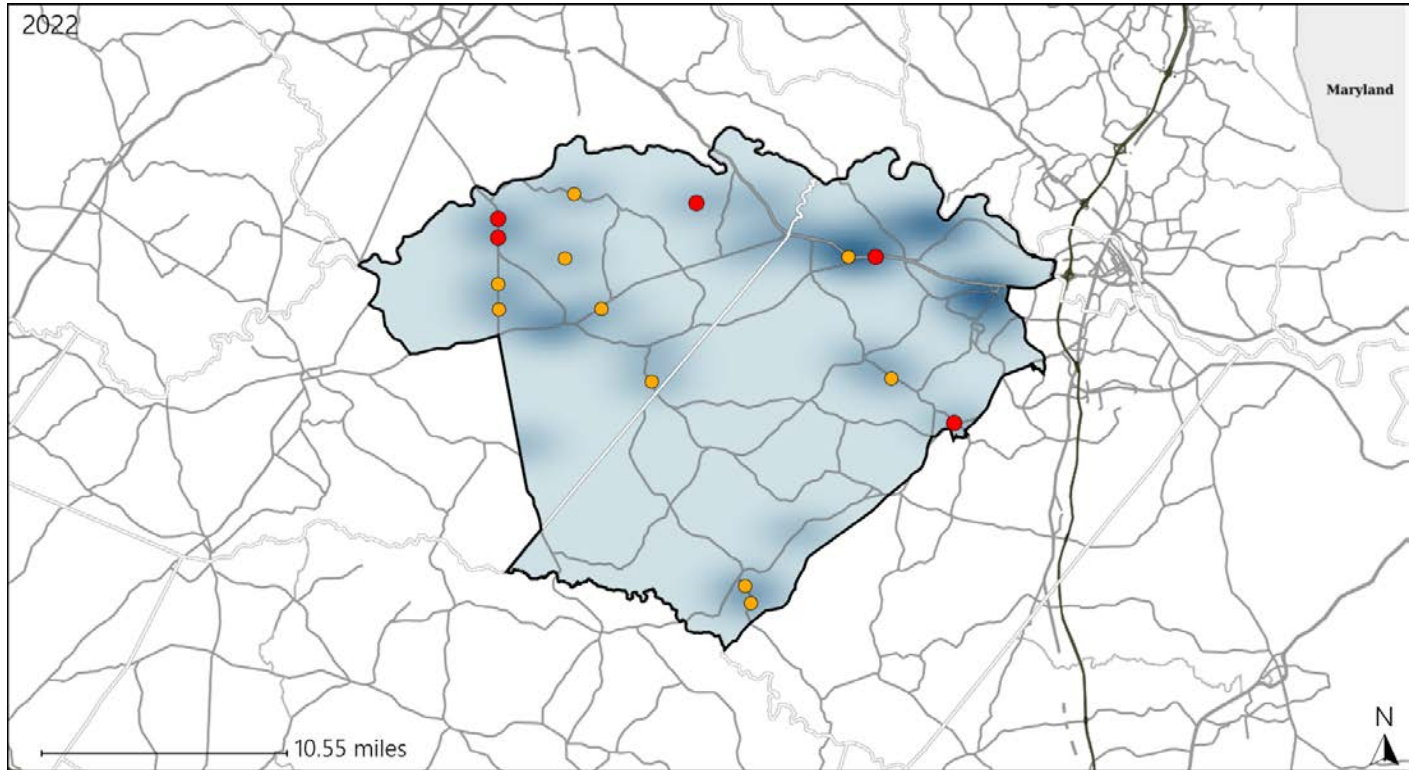


Available Crash Data - Calendar Year (CY)	CY 2019	CY 2020	CY 2021	CY 2022
Total Crashes	825	751	818	839
Fatal Crashes	10	11	8	9
Injury Crashes	239	199	212	210
Speed-Related Fatal Crashes	6	6	4	5
Percent of Speed-Related Fatal Crashes to Total Fatal Crashes	60%	55%	50%	56%
Speed-Related Injury Crashes	57	47	53	63
Percent of Speed-Related Injury Crashes to Total Injury Crashes	24%	24%	25%	30%

Virginia House District 63 Unrestrained Crash Statistics

Report Generated May, 2023

	Count	Highest Time Period(s)	Highest Day(s)	Highest Month(s)
Fatal Crashes	5	3:00pm - 5:59pm	Friday • Saturday	November
Unrestrained Fatalities	5	6:00am - 8:59am (40%)	(80%)	(40%)
Serious Injury Crashes	10	Noon - 2:59pm (40%)	Saturday (30%)	June (30%)



House District 63 Unrestrained-Related Crashes

- | | |
|--------------------|------------------------|
| Interstate Crashes | Non-interstate Crashes |
| ● Fatal | ● Fatal |
| ● Serious Injury | ● Serious Injury |

The blue gradient represents the density of all unrestrained-related crashes.

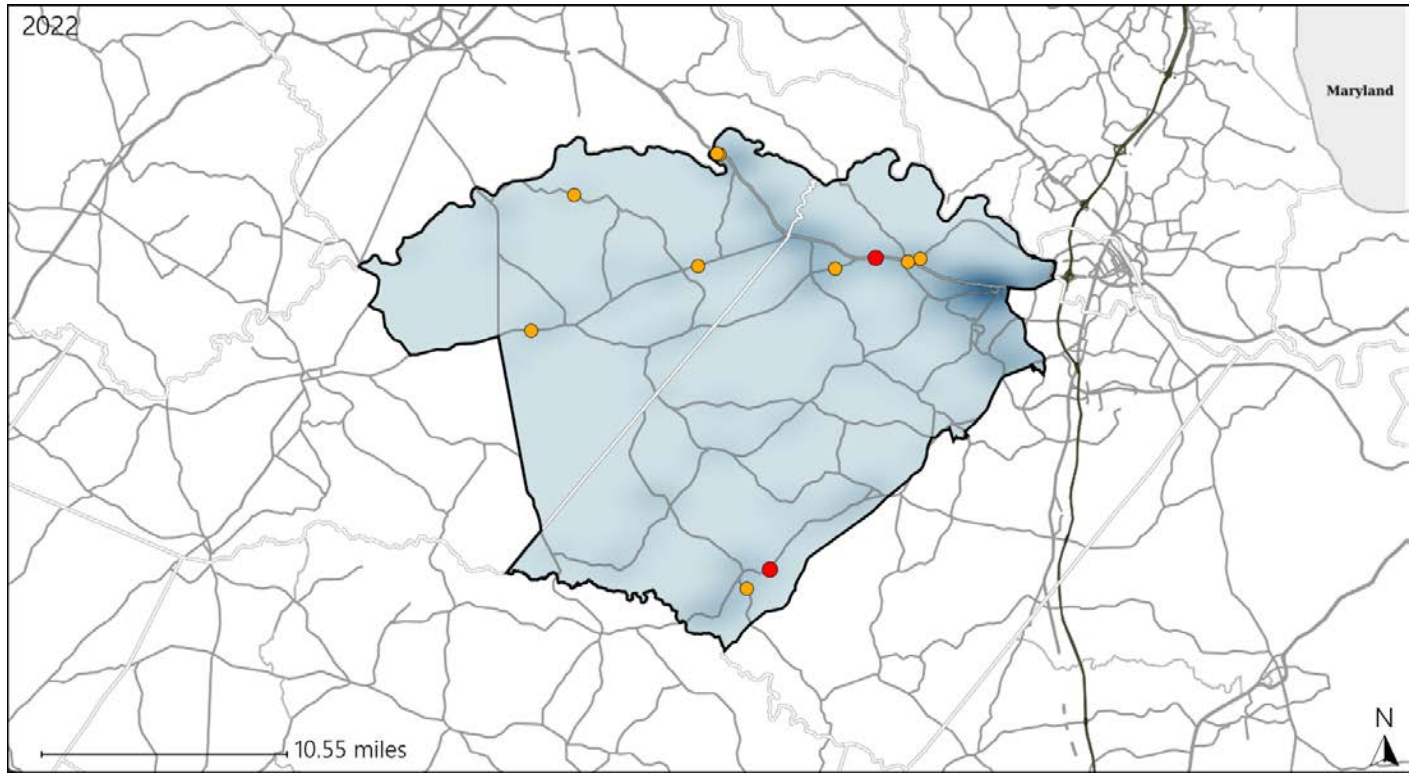


Available Crash Data - Calendar Year (CY)	CY 2019	CY 2020	CY 2021	CY 2022
Total Crashes	825	751	818	839
Fatalities	13	11	11	9
Injuries	374	305	318	312
Unrestrained Fatalities	7	5	5	5
Percent of Unrestrained Fatalities to Total Fatalities	54%	45%	45%	56%
Unrestrained Injuries	30	39	28	39
Percent of Unrestrained Injuries to Total Injuries	8%	13%	9%	13%

Virginia House District 63 Distracted Driving Crash Statistics

Report Generated May, 2023

	Count	Highest Time Period(s)	Highest Day(s)	Highest Month(s)
Fatal Crashes	2	6:00pm - 8:59pm	Tuesday • Wednesday	November
Resulting Fatalities	2	9:00pm - 11:59pm (100%)	(100%)	(100%)
Serious Injury Crashes	9	3:00am - 5:59am 3:00pm - 5:59pm (44%)	Saturday (33%)	February • May (44%)



House District 63 Distracted Driving-Related Crashes

- | | |
|--------------------|------------------------|
| Interstate Crashes | Non-interstate Crashes |
| ● Fatal | ● Fatal |
| ● Serious Injury | ● Serious Injury |

The blue gradient represents the density of all distracted driving-related crashes.



Available Crash Data - Calendar Year (CY)	CY 2019	CY 2020	CY 2021	CY 2022
Total Crashes	825	751	818	839
Fatal Crashes	10	11	8	9
Injury Crashes	239	199	212	210
Distracted Driving-Related Fatal Crashes	0	1	3	2
Percent of Distracted Driving-Related Fatal Crashes to Total Fatal Crashes	0%	9%	38%	22%
Distracted Driving-Related Injury Crashes	51	46	35	36
Percent of Distracted Driving-Related Injury Crashes to Total Injury Crashes	21%	23%	17%	17%