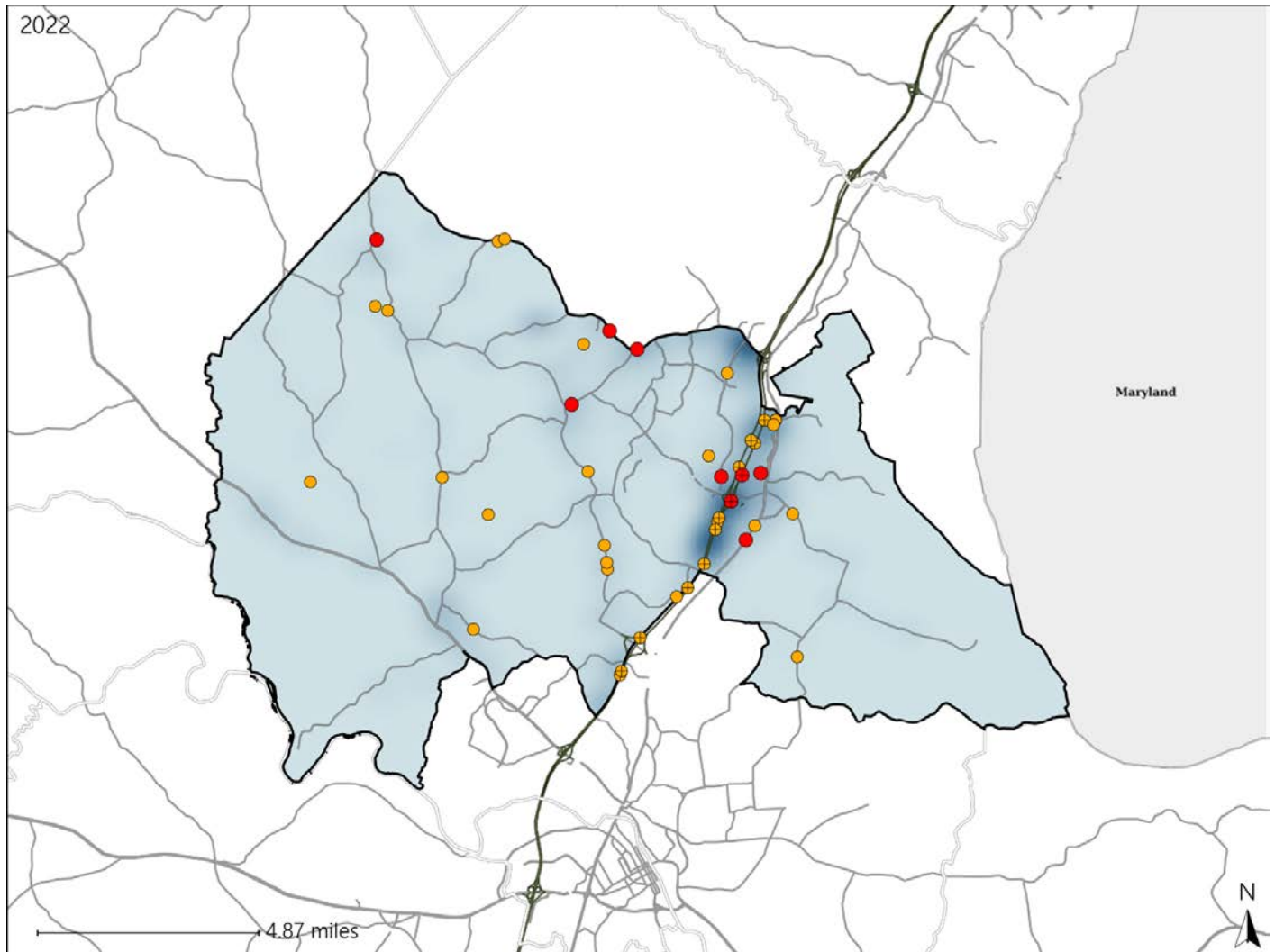


Virginia House District 64 Crash Statistics

Report Generated May, 2023

	Count	Highest Time Period(s)	Highest Day(s)	Highest Month(s)
Fatal Crashes	9	6:00pm - 8:59pm	Sunday • Thursday	May
Resulting Fatalities	11	(44%)	(44%)	(33%)
Serious Injury Crashes	35	3:00pm - 5:59pm 6:00pm - 8:59pm	Saturday • Thursday	July
		(52%)	(46%)	(17%)



House District 64 Crashes

Interstate Crashes

- Fatal
- Serious Injury

Non-interstate Crashes

- Fatal
- Serious Injury

The blue gradient represents the density of all crashes.

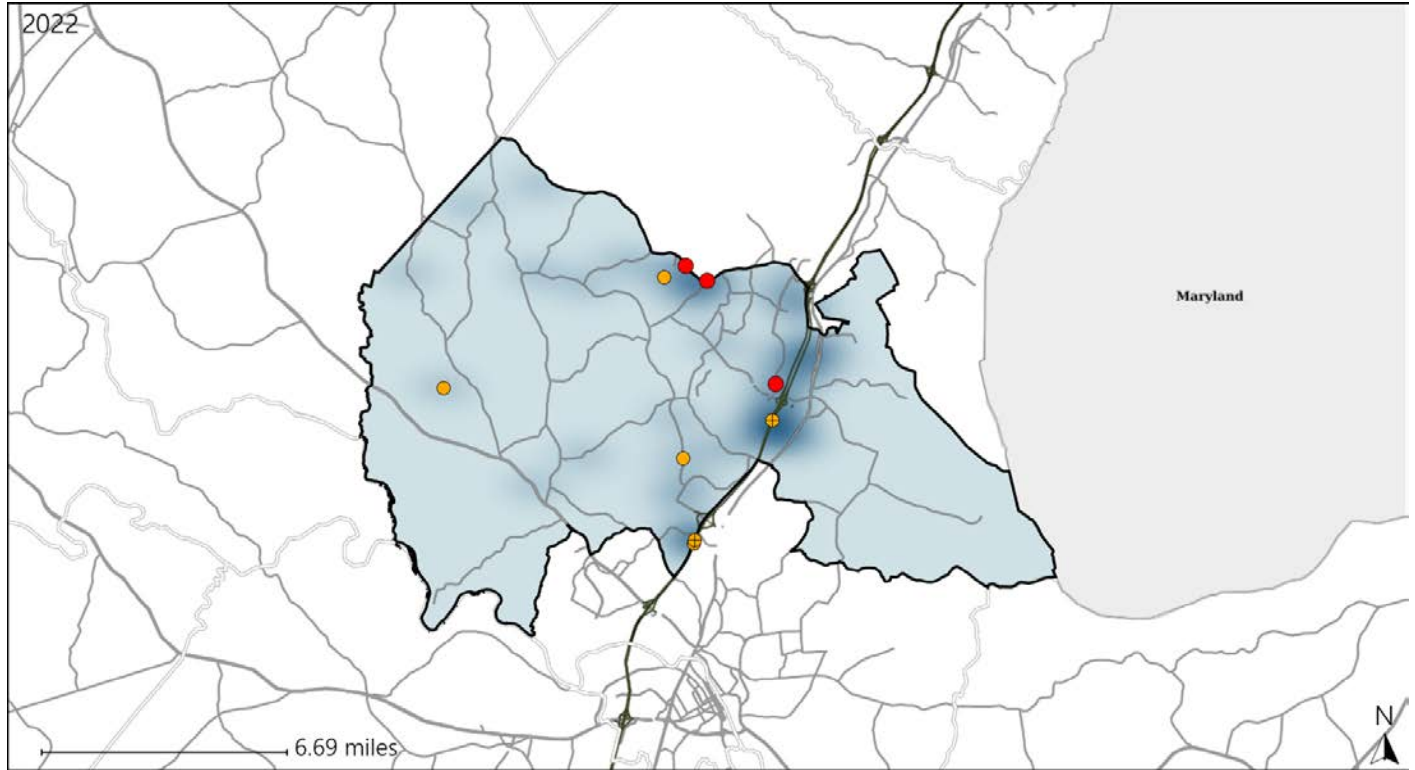


Available Crash Data - Calendar Year (CY)	CY 2019	CY 2020	CY 2021	CY 2022
Total Crashes	805	579	713	812
Fatal Crashes	4	1	8	9
Injury Crashes	178	138	169	202

Virginia House District 64 Alcohol Crash Statistics

Report Generated May, 2023

	Count	Highest Time Period(s)	Highest Day(s)	Highest Month(s)
Fatal Crashes	3	6:00pm - 8:59pm	Saturday • Sunday	February • July
Resulting Fatalities	5	(100%)	(66%)	(66%)
Serious Injury Crashes	6	6:00pm - 8:59pm	Saturday	April • August
		(50%)	(50%)	(34%)



House District 64 Alcohol-Related Crashes

Interstate Crashes

Non-interstate Crashes

- Fatal
- Serious Injury

- Fatal
- Serious Injury

The blue gradient represents the density of all alcohol-related crashes.

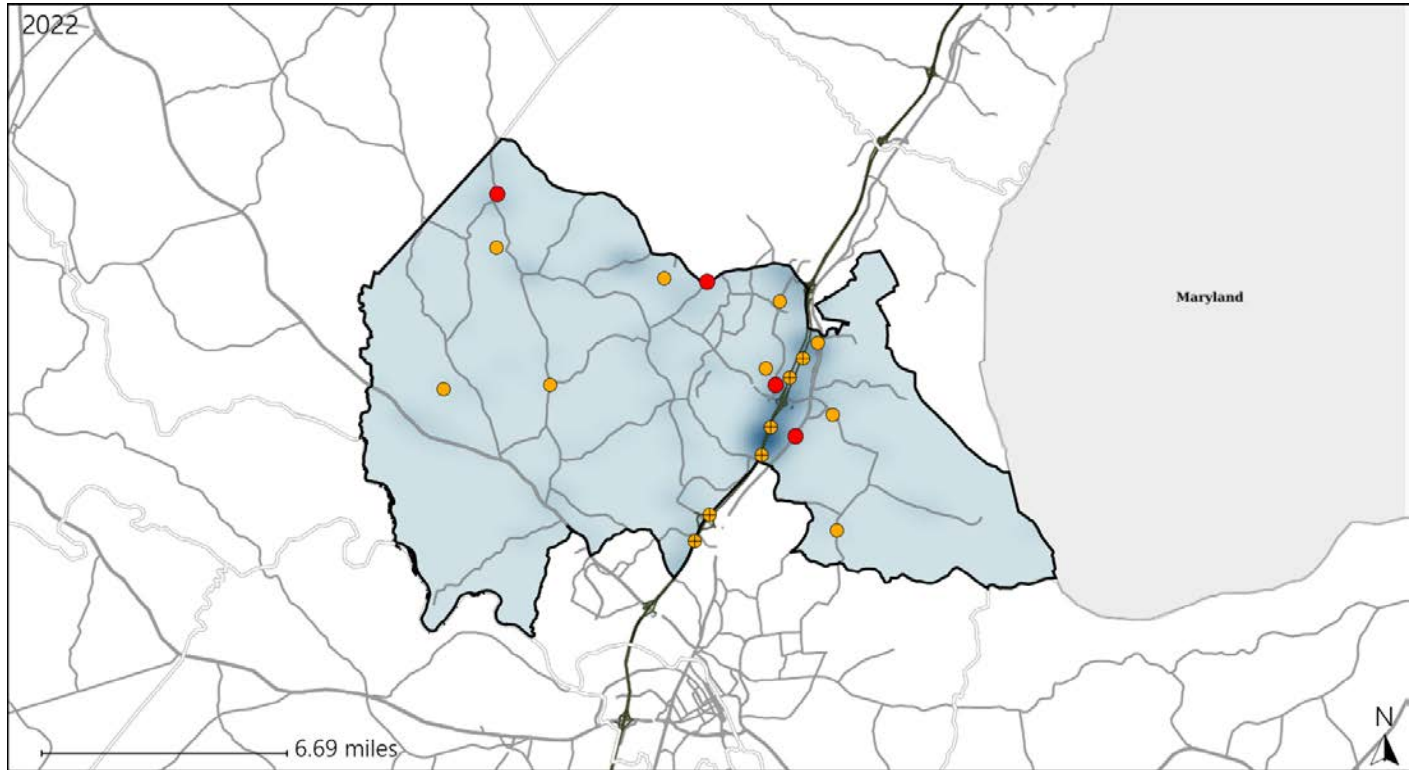


Available Crash Data - Calendar Year (CY)	CY 2019	CY 2020	CY 2021	CY 2022
Total Crashes	805	579	713	812
Fatal Crashes	4	1	8	9
Injury Crashes	178	138	169	202
Alcohol-Related Fatal Crashes	2	0	1	3
Percent of Alcohol-Related Fatal Crashes to Total Fatal Crashes	50%	0%	13%	33%
Alcohol-Related Injury Crashes	11	10	7	14
Percent of Alcohol-Related Injury Crashes to Total Injury Crashes	6%	7%	4%	7%

Virginia House District 64 Speed Crash Statistics

Report Generated May, 2023

	Count	Highest Time Period(s)	Highest Day(s)	Highest Month(s)
Fatal Crashes	4	6:00pm - 8:59pm	Sunday	May
Resulting Fatalities	6	9:00am - 11:59am (100%)	(50%)	(50%)
Serious Injury Crashes	15	3:00pm - 5:59pm (47%)	Saturday • Thursday (54%)	July (20%)



House District 64 Speed-Related Crashes

Interstate Crashes

Non-interstate Crashes

- Fatal
- Serious Injury

- Fatal
- Serious Injury

The blue gradient represents the density of all speed-related crashes.

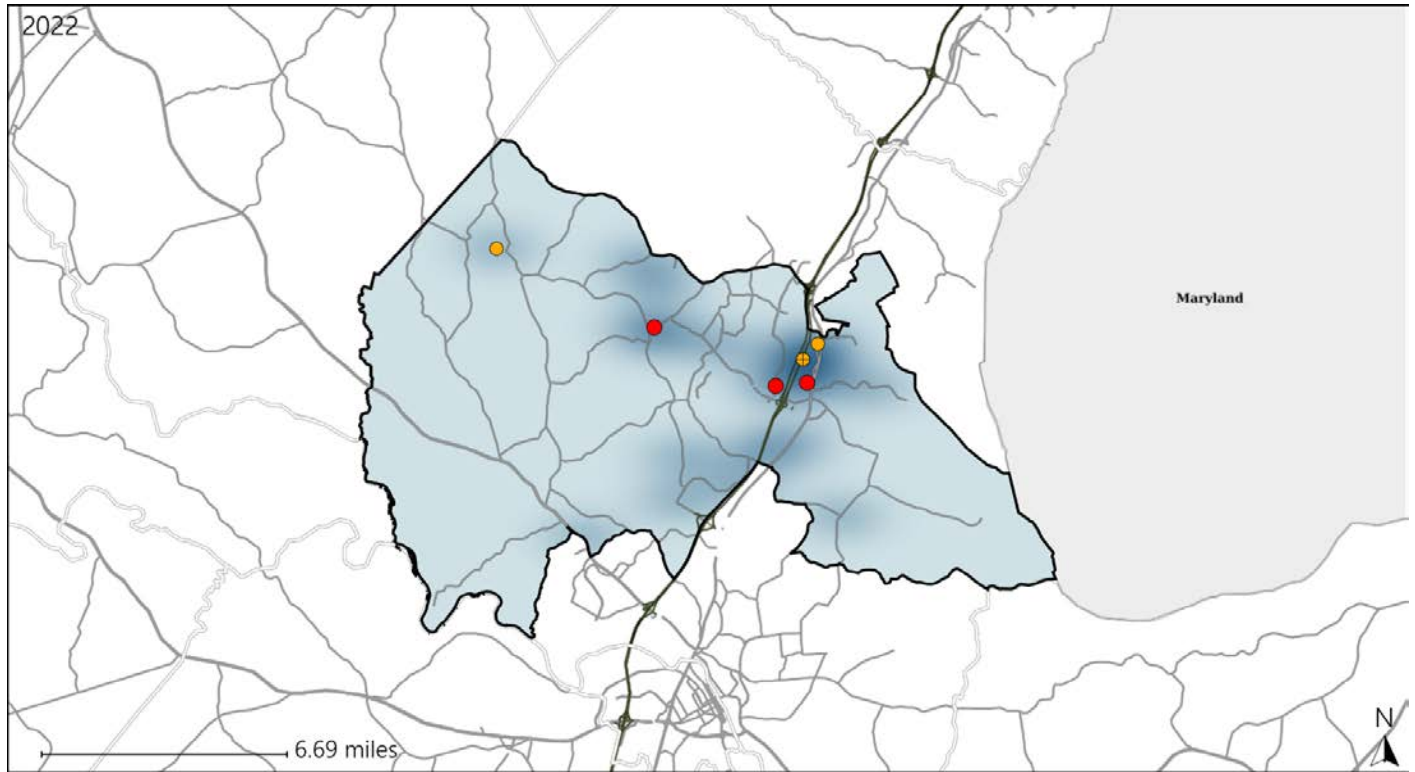


Available Crash Data - Calendar Year (CY)	CY 2019	CY 2020	CY 2021	CY 2022
Total Crashes	805	579	713	812
Fatal Crashes	4	1	8	9
Injury Crashes	178	138	169	202
Speed-Related Fatal Crashes	2	1	4	4
Percent of Speed-Related Fatal Crashes to Total Fatal Crashes	50%	100%	50%	44%
Speed-Related Injury Crashes	56	54	62	67
Percent of Speed-Related Injury Crashes to Total Injury Crashes	31%	39%	37%	33%

Virginia House District 64 Unrestrained Crash Statistics

Report Generated May, 2023

	Count	Highest Time Period(s)	Highest Day(s)	Highest Month(s)
Fatal Crashes	3	6:00pm - 8:59pm	Monday - Sunday	August
Unrestrained Fatalities	3	(67%)	(66%)	(67%)
Serious Injury Crashes	3	6:00pm - 8:59pm	Tuesday	June - November
		(67%)	(67%)	(66%)



House District 64 Unrestrained-Related Crashes

Interstate Crashes

Non-interstate Crashes

- Fatal
- Serious Injury

- Fatal
- Serious Injury

The blue gradient represents the density of all unrestrained-related crashes.

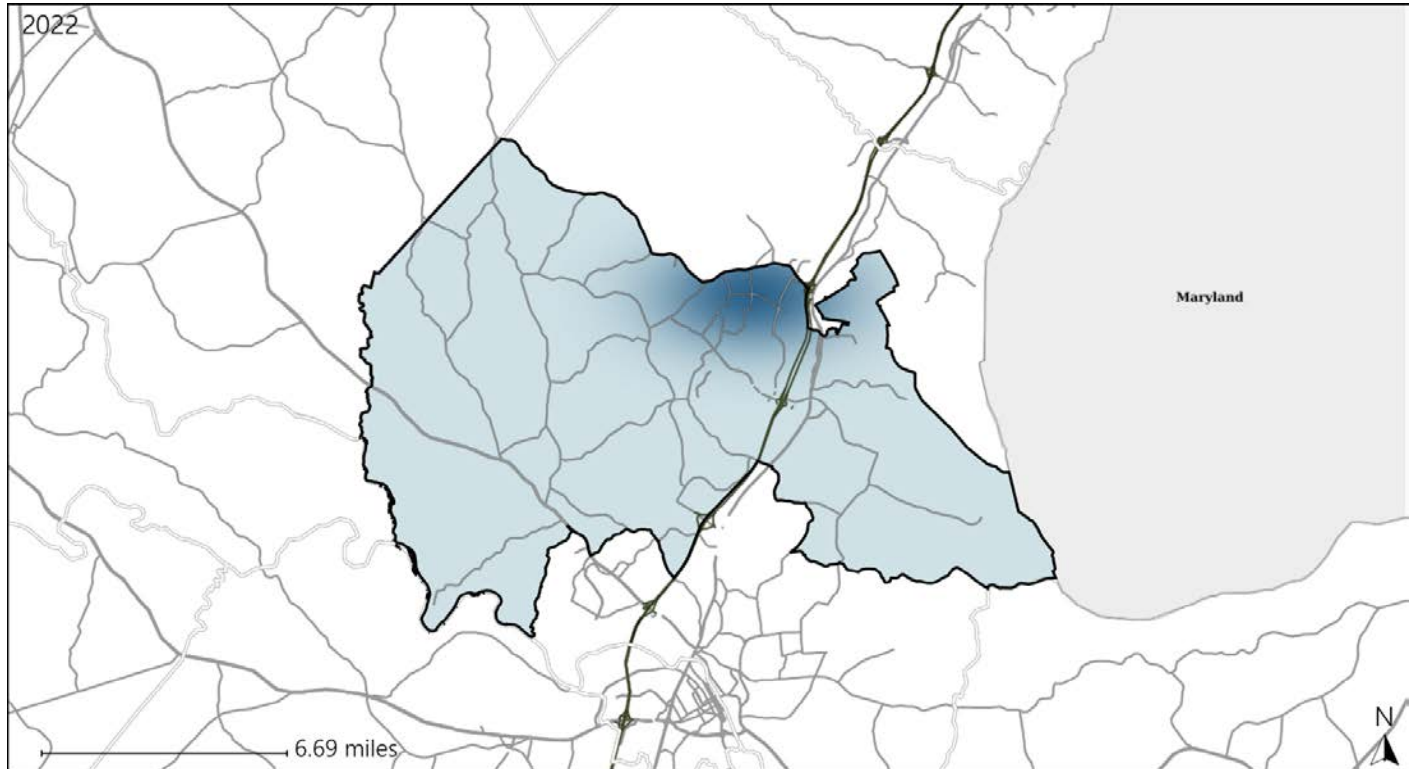


Available Crash Data - Calendar Year (CY)	CY 2019	CY 2020	CY 2021	CY 2022
Total Crashes	805	579	713	812
Fatalities	5	1	8	11
Injuries	281	199	236	343
Unrestrained Fatalities	2	0	0	3
Percent of Unrestrained Fatalities to Total Fatalities	40%	0%	0%	27%
Unrestrained Injuries	15	18	12	19
Percent of Unrestrained Injuries to Total Injuries	5%	9%	5%	6%

Virginia House District 64 Bicycle Crash Statistics

Report Generated May, 2023

	Count	Highest Time Period(s)	Highest Day(s)	Highest Month(s)
Fatal Crashes	0	-	-	-
Bicycle Fatalities	0	-	-	-
Serious Injury Crashes	0	-	-	-




House District 64 Bicycle-Related Crashes


Interstate Crashes

Non-interstate Crashes

 Fatal

 Fatal

 Serious Injury

 Serious Injury

The blue gradient represents the density of all bicycle-related crashes.

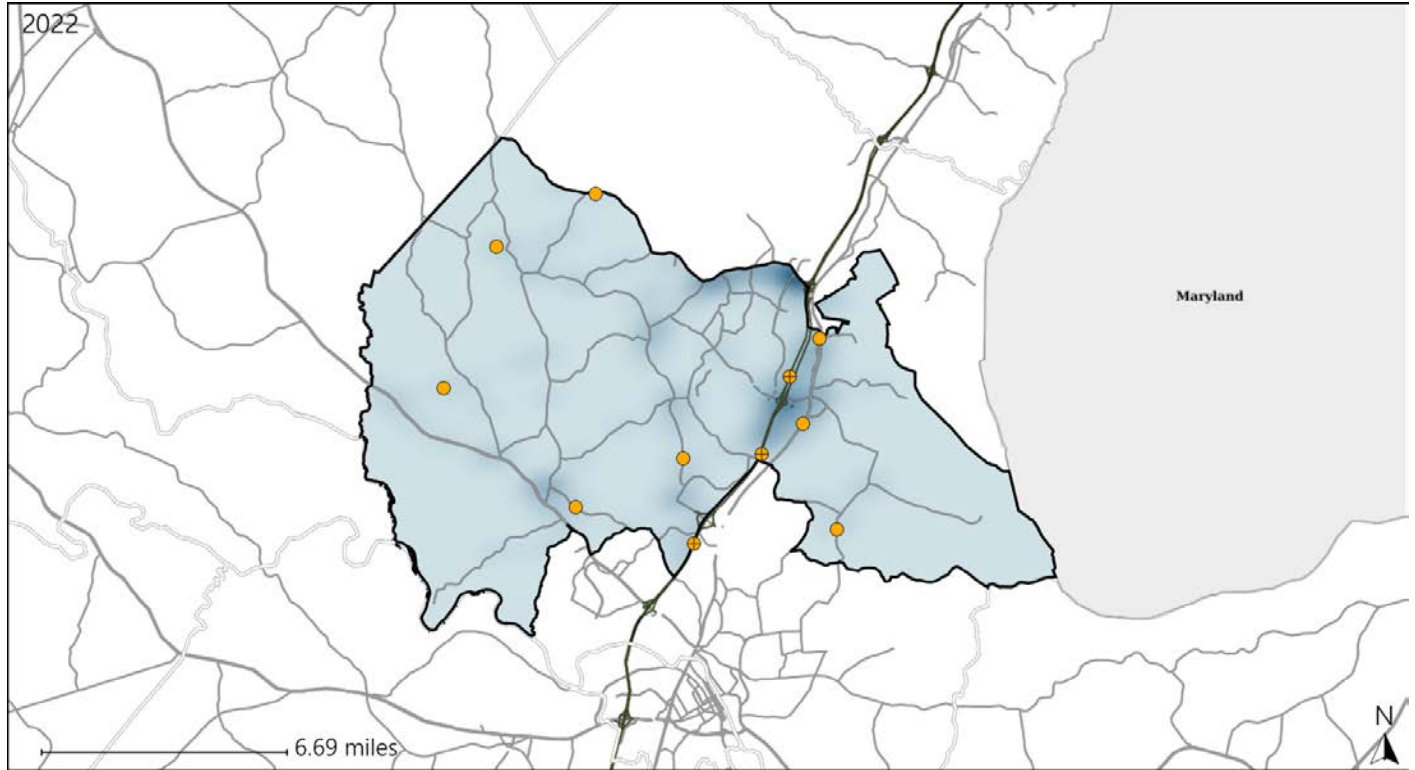


Available Crash Data - Calendar Year (CY)	CY 2019	CY 2020	CY 2021	CY 2022
Total Crashes	805	579	713	812
Fatal Crashes	4	1	8	9
Injury Crashes	178	138	169	202
Bicycle-Related Fatal Crashes	0	0	0	0
Percent of Bicycle-Related Fatal Crashes to Total Fatal Crashes	0%	0%	0%	0%
Bicycle-Related Injury Crashes	0	2	2	1
Percent of Bicycle-Related Injury Crashes to Total Injury Crashes	0%	1%	1%	0%

Virginia House District 64 Distracted Driving Crash Statistics

Report Generated May, 2023

	Count	Highest Time Period(s)	Highest Day(s)	Highest Month(s)
Fatal Crashes	0	-	-	-
Resulting Fatalities	0	-	-	-
Serious Injury Crashes	11	3:00pm - 5:59pm (36%)	Friday • Thursday (54%)	June (27%)



House District 64 Distracted Driving-Related Crashes

- | | |
|--------------------|------------------------|
| Interstate Crashes | Non-interstate Crashes |
| Fatal | Fatal |
| Serious Injury | Serious Injury |

The blue gradient represents the density of all distracted driving-related crashes.



Available Crash Data - Calendar Year (CY)	CY 2019	CY 2020	CY 2021	CY 2022
Total Crashes	805	579	713	812
Fatal Crashes	4	1	8	9
Injury Crashes	178	138	169	202
Distracted Driving-Related Fatal Crashes	1	1	2	0
Percent of Distracted Driving-Related Fatal Crashes to Total Fatal Crashes	25%	100%	25%	0%
Distracted Driving-Related Injury Crashes	48	29	44	51
Percent of Distracted Driving-Related Injury Crashes to Total Injury Crashes	27%	21%	26%	25%