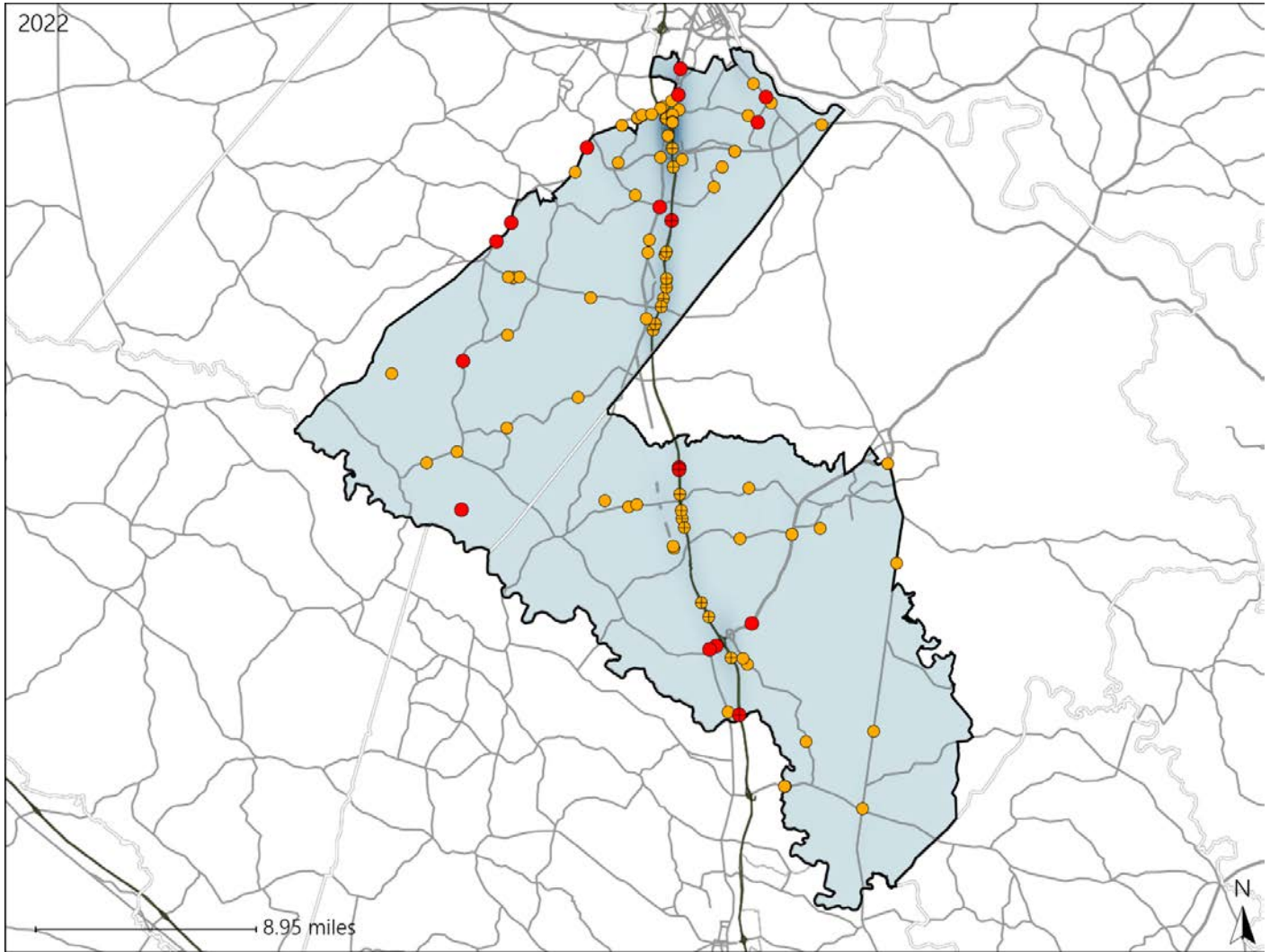


# Virginia House District 66 Crash Statistics

Report Generated May, 2023

	Count	Highest Time Period(s)	Highest Day(s)	Highest Month(s)
<b>Fatal Crashes</b>	<b>17</b>	6:00pm - 8:59pm	Friday • Sunday	September
<b>Resulting Fatalities</b>	<b>18</b>	9:00pm - 11:59pm (48%)	(48%)	(18%)
<b>Serious Injury Crashes</b>	<b>83</b>	Noon - 2:59pm	Saturday • Tuesday	December • May
		(17%)	(34%)	(24%)



## House District 66 Crashes

Interstate Crashes

- Fatal
- Serious Injury

Non-interstate Crashes

- Fatal
- Serious Injury

The blue gradient represents the density of all crashes.

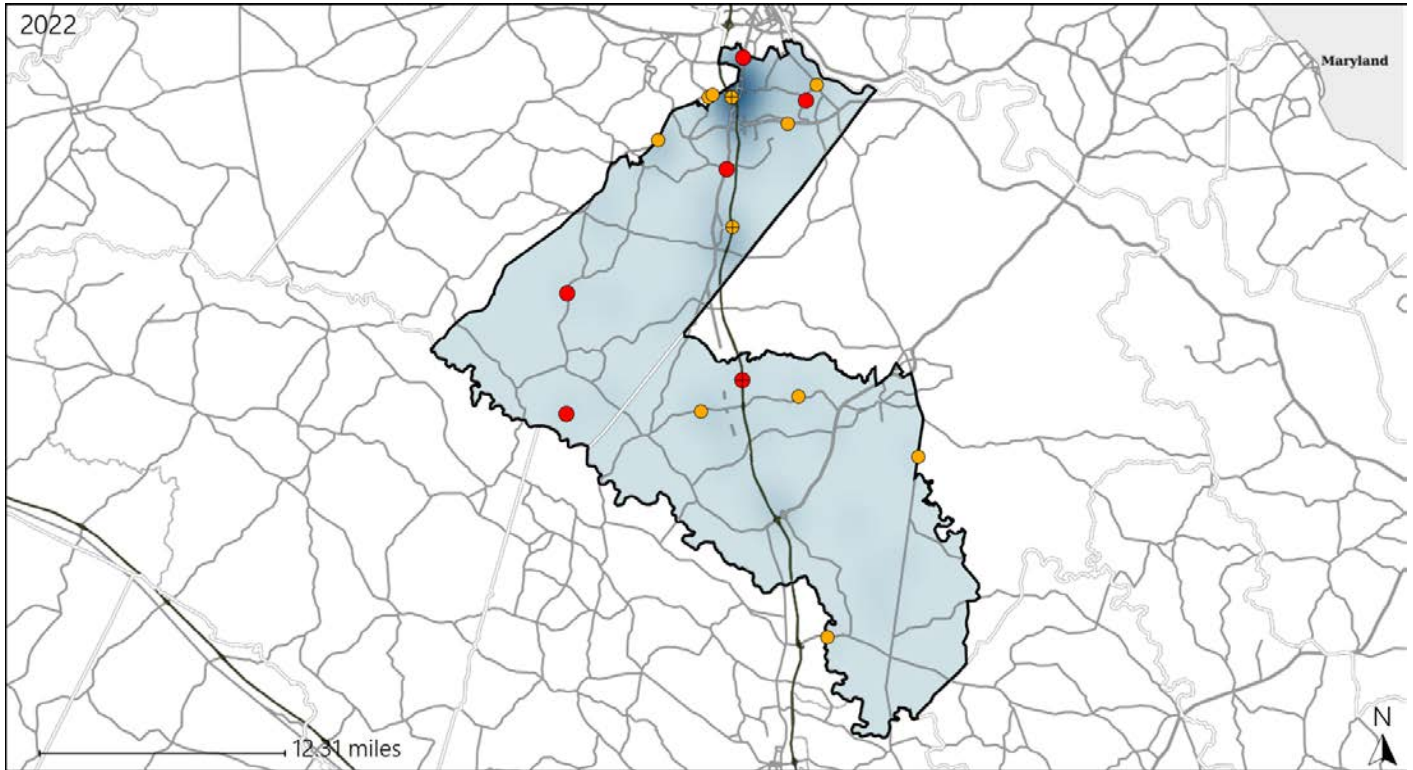


Available Crash Data - Calendar Year (CY)	CY 2019	CY 2020	CY 2021	CY 2022
Total Crashes	1539	1373	1618	1777
Fatal Crashes	12	8	11	17
Injury Crashes	390	356	385	385

# Virginia House District 66 Alcohol Crash Statistics

Report Generated May, 2023

	Count	Highest Time Period(s)	Highest Day(s)	Highest Month(s)
<b>Fatal Crashes</b>	<b>6</b>	<b>6:00pm - 8:59pm</b>	<b>Sunday</b>	<b>September</b>
<b>Resulting Fatalities</b>	<b>7</b>	<b>Midnight - 2:59am</b> (66%)	<b>(50%)</b>	<b>(33%)</b>
<b>Serious Injury Crashes</b>	<b>11</b>	<b>Midnight - 2:59am</b> (36%)	<b>Saturday • Sunday</b> (54%)	<b>December • February</b> (36%)



### House District 66 Alcohol-Related Crashes

Interstate Crashes

- Fatal
- Serious Injury

Non-interstate Crashes

- Fatal
- Serious Injury

The blue gradient represents the density of all alcohol-related crashes.

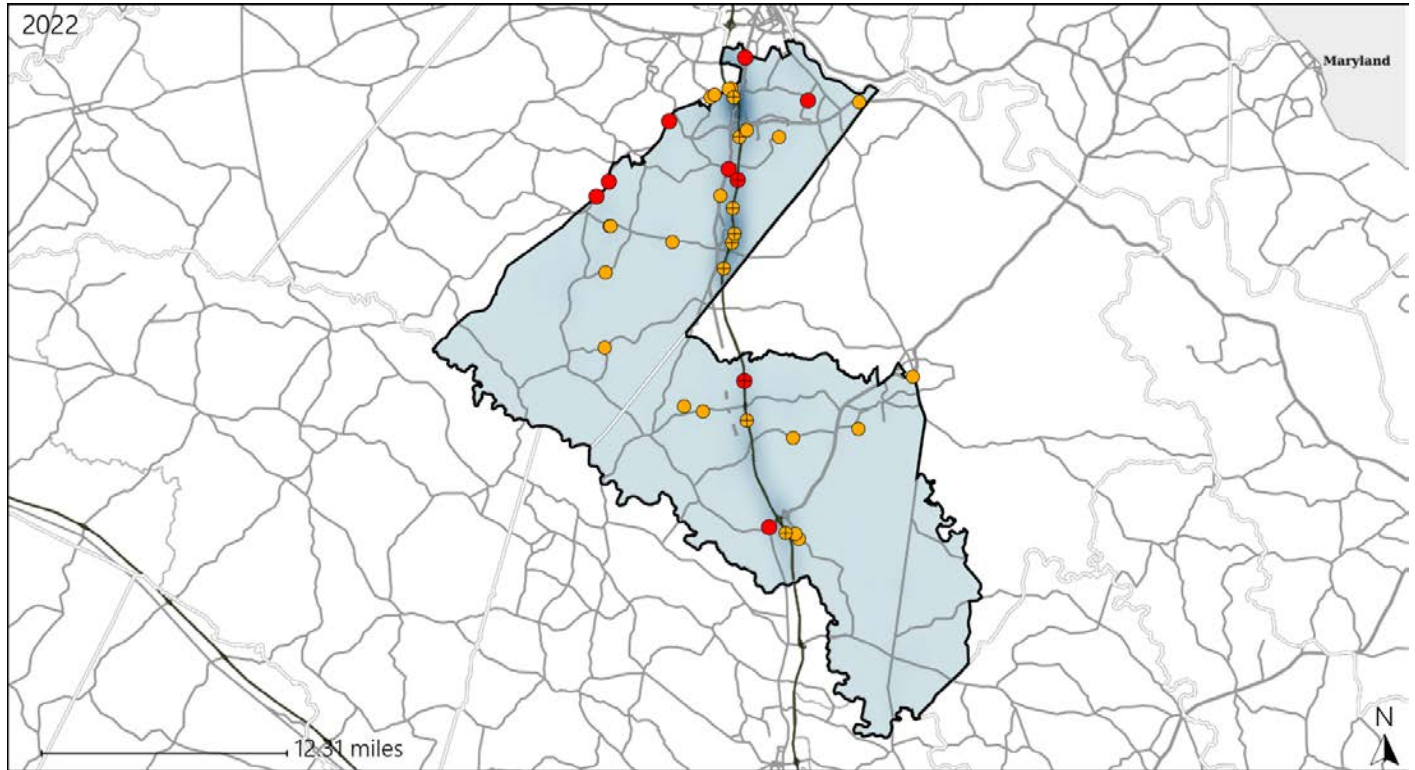


Available Crash Data - Calendar Year (CY)	CY 2019	CY 2020	CY 2021	CY 2022
Total Crashes	1539	1373	1618	1777
Fatal Crashes	12	8	11	17
Injury Crashes	390	356	385	385
Alcohol-Related Fatal Crashes	4	1	3	6
Percent of Alcohol-Related Fatal Crashes to Total Fatal Crashes	33%	13%	27%	35%
Alcohol-Related Injury Crashes	32	26	22	30
Percent of Alcohol-Related Injury Crashes to Total Injury Crashes	8%	7%	6%	8%

# Virginia House District 66 Speed Crash Statistics

Report Generated May, 2023

	Count	Highest Time Period(s)	Highest Day(s)	Highest Month(s)
<b>Fatal Crashes</b>	<b>9</b>	<b>6:00pm - 8:59pm</b>	<b>Sunday</b>	<b>August • February</b>
<b>Resulting Fatalities</b>	<b>10</b>	<b>9:00am - 11:59am</b> (44%)	<b>(33%)</b>	<b>(22%)</b>
<b>Serious Injury Crashes</b>	<b>29</b>	<b>9:00am - 11:59am</b> (24%)	<b>Monday</b> (21%)	<b>September</b> (21%)



## House District 66 Speed-Related Crashes

Interstate Crashes                      Non-interstate Crashes  
 ● Fatal                                      ● Fatal  
 ⊕ Serious Injury                          ⊕ Serious Injury

The blue gradient represents the density of all speed-related crashes.



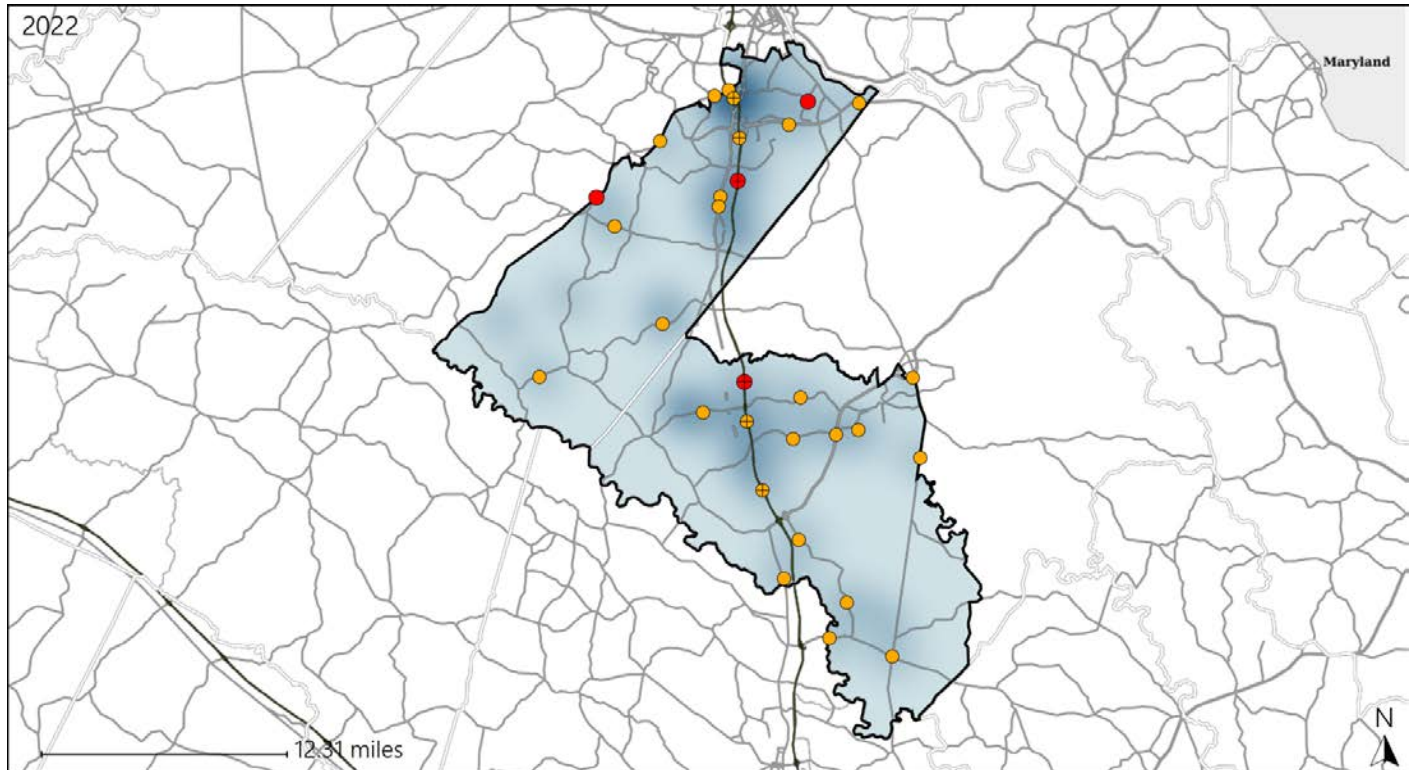
Available Crash Data - Calendar Year (CY)	CY 2019	CY 2020	CY 2021	CY 2022
Total Crashes	1539	1373	1618	1777
Fatal Crashes	12	8	11	17
Injury Crashes	390	356	385	385
Speed-Related Fatal Crashes	4	5	5	9
Percent of Speed-Related Fatal Crashes to Total Fatal Crashes	33%	63%	45%	53%
Speed-Related Injury Crashes	98	102	95	100
Percent of Speed-Related Injury Crashes to Total Injury Crashes	25%	29%	25%	26%



# Virginia House District 66 Unrestrained Crash Statistics

Report Generated May, 2023

	Count	Highest Time Period(s)	Highest Day(s)	Highest Month(s)
<b>Fatal Crashes</b>	<b>4</b>	<b>9:00pm - 11:59pm</b>	<b>Saturday • Sunday</b>	<b>August • January</b>
<b>Unrestrained Fatalities</b>	<b>4</b>	(50%)	(100%)	(50%)
<b>Serious Injury Crashes</b>	<b>26</b>	<b>Midnight - 2:59am</b>	<b>Saturday • Sunday</b>	<b>November</b>
		(27%)	(46%)	(19%)



## House District 66 Unrestrained-Related Crashes

Interstate Crashes

Non-interstate Crashes

- Fatal
- Serious Injury

- Fatal
- Serious Injury

The blue gradient represents the density of all unrestrained-related crashes.

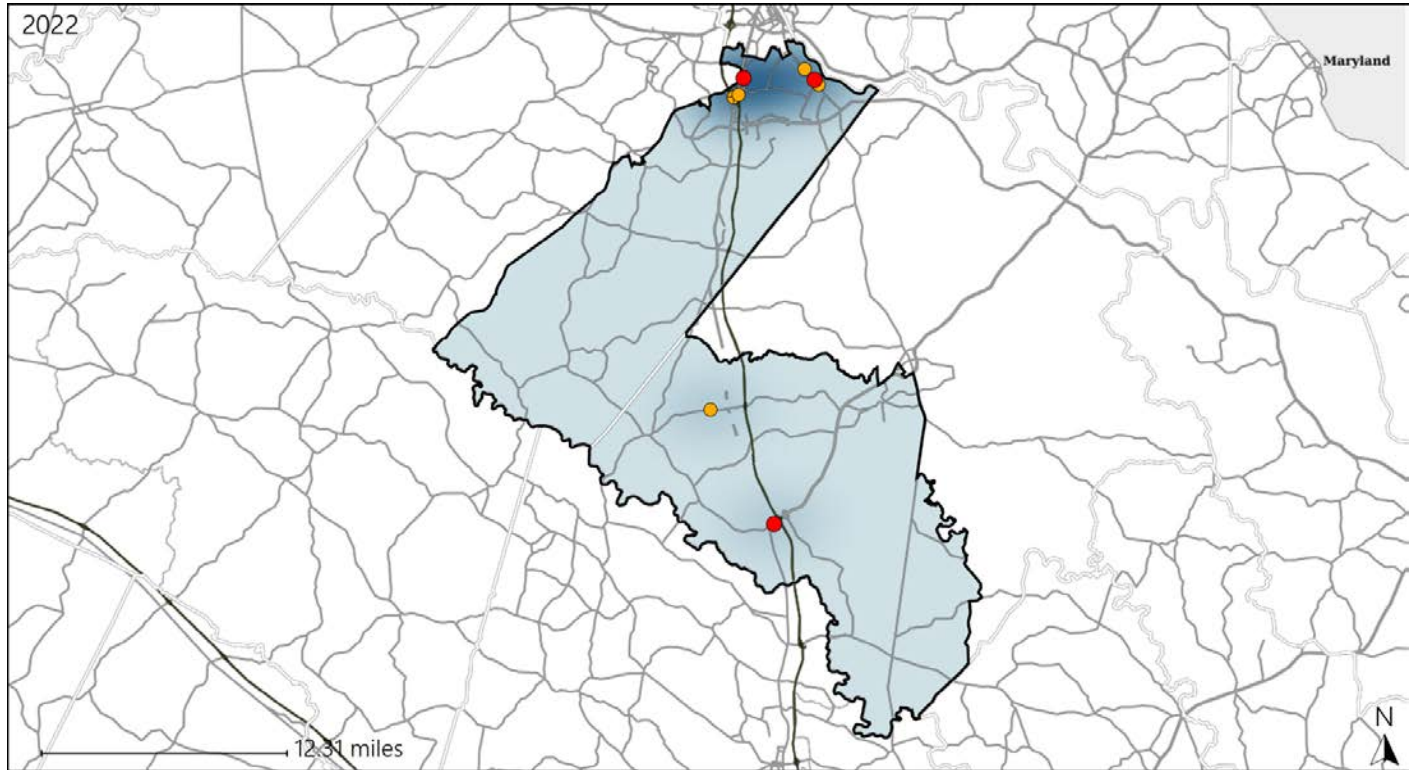


Available Crash Data - Calendar Year (CY)	CY 2019	CY 2020	CY 2021	CY 2022
<b>Total Crashes</b>	<b>1539</b>	<b>1373</b>	<b>1618</b>	<b>1777</b>
<b>Fatalities</b>	<b>14</b>	<b>9</b>	<b>12</b>	<b>18</b>
<b>Injuries</b>	<b>612</b>	<b>488</b>	<b>653</b>	<b>587</b>
<b>Unrestrained Fatalities</b>	<b>8</b>	<b>2</b>	<b>3</b>	<b>4</b>
<b>Percent of Unrestrained Fatalities to Total Fatalities</b>	<b>57%</b>	<b>22%</b>	<b>25%</b>	<b>22%</b>
<b>Unrestrained Injuries</b>	<b>54</b>	<b>48</b>	<b>62</b>	<b>56</b>
<b>Percent of Unrestrained Injuries to Total Injuries</b>	<b>9%</b>	<b>10%</b>	<b>9%</b>	<b>10%</b>

# Virginia House District 66 Pedestrian Crash Statistics

Report Generated May, 2023

	Count	Highest Time Period(s)	Highest Day(s)	Highest Month(s)
<b>Fatal Crashes</b>	<b>3</b>	3:00am - 5:59am	Friday • Tuesday	February • March
<b>Pedestrian Fatalities</b>	<b>3</b>	9:00pm - 11:59pm (66%)	(66%)	(66%)
<b>Serious Injury Crashes</b>	<b>5</b>	6:00am - 8:59am (40%)	Wednesday (40%)	December (40%)



### House District 66 Pedestrian-Related Crashes

- |  |  |
|--|--|
| Interstate Crashes                                   | Non-interstate Crashes                               |
| <span style="color: red;">●</span> Fatal             | <span style="color: red;">●</span> Fatal             |
| <span style="color: orange;">●</span> Serious Injury | <span style="color: orange;">●</span> Serious Injury |

The blue gradient represents the density of all pedestrian-related crashes.

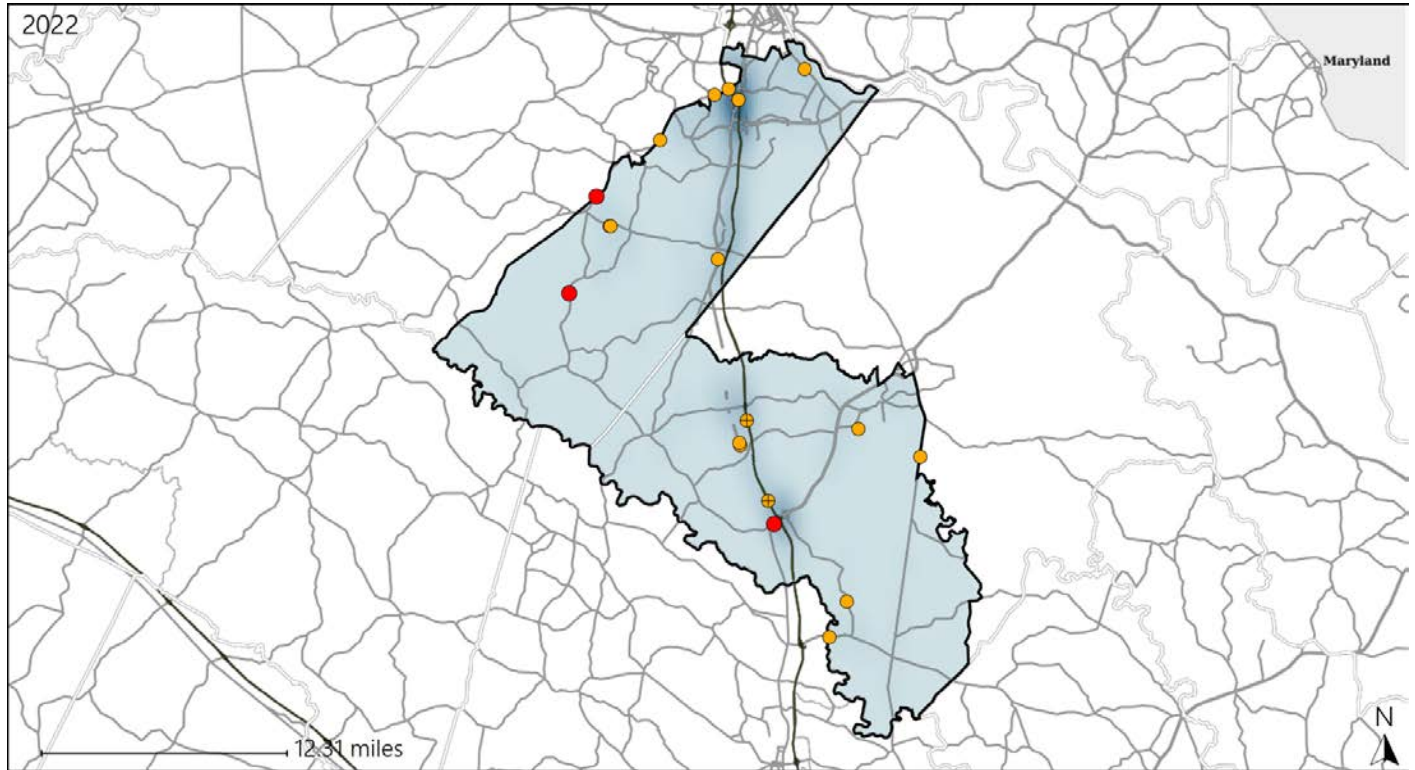


Available Crash Data - Calendar Year (CY)	CY 2019	CY 2020	CY 2021	CY 2022
Total Crashes	1539	1373	1618	1777
Fatal Crashes	12	8	11	17
Injury Crashes	390	356	385	385
Pedestrian-Related Fatal Crashes	2	0	2	3
Percent of Pedestrian-Related Fatal Crashes to Total Fatal Crashes	17%	0%	18%	18%
Pedestrian-Related Injury Crashes	14	12	5	8
Percent of Pedestrian-Related Injury Crashes to Total Injury Crashes	4%	3%	1%	2%

# Virginia House District 66 Distracted Driving Crash Statistics

Report Generated May, 2023

	Count	Highest Time Period(s)	Highest Day(s)	Highest Month(s)
<b>Fatal Crashes</b>	<b>3</b>	3:00am - 5:59am	Saturday • Sunday	February • January
<b>Resulting Fatalities</b>	<b>3</b>	6:00pm - 8:59pm (66%)	(66%)	(66%)
<b>Serious Injury Crashes</b>	<b>16</b>	9:00am - 11:59am (25%)	Wednesday (25%)	June (19%)



## House District 66 Distracted Driving-Related Crashes

- |  |  |
|--|--|
| Interstate Crashes                                   | Non-interstate Crashes                               |
| <span style="color: red;">●</span> Fatal             | <span style="color: red;">●</span> Fatal             |
| <span style="color: orange;">●</span> Serious Injury | <span style="color: orange;">●</span> Serious Injury |

The blue gradient represents the density of all distracted driving-related crashes.



Available Crash Data - Calendar Year (CY)	CY 2019	CY 2020	CY 2021	CY 2022
Total Crashes	1539	1373	1618	1777
Fatal Crashes	12	8	11	17
Injury Crashes	390	356	385	385
Distracted Driving-Related Fatal Crashes	1	1	0	3
Percent of Distracted Driving-Related Fatal Crashes to Total Fatal Crashes	8%	13%	0%	18%
Distracted Driving-Related Injury Crashes	82	70	70	59
Percent of Distracted Driving-Related Injury Crashes to Total Injury Crashes	21%	20%	18%	15%