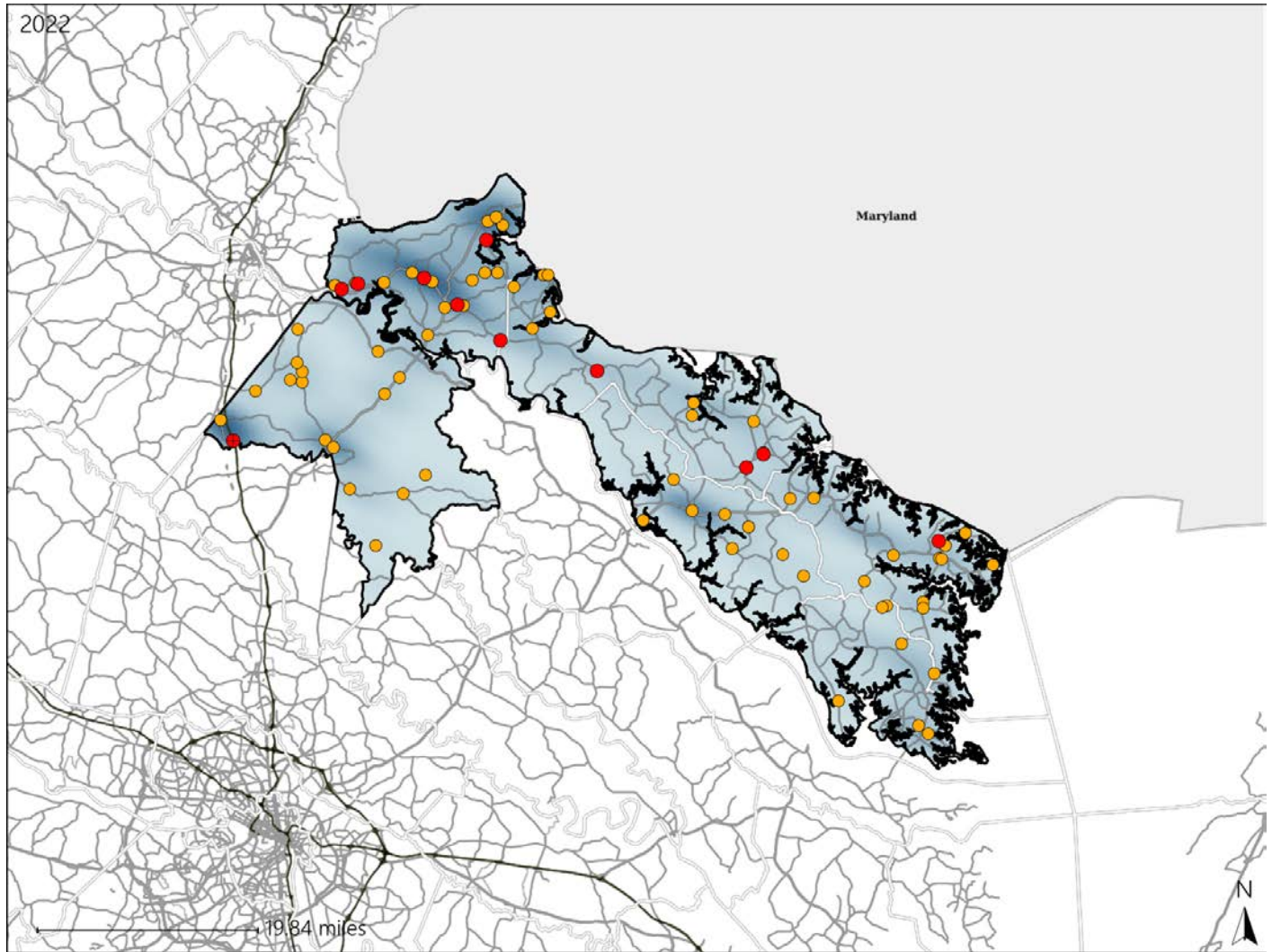


Virginia House District 67 Crash Statistics

Report Generated May, 2023

	Count	Highest Time Period(s)	Highest Day(s)	Highest Month(s)
Fatal Crashes	11	9:00am - 11:59am	Tuesday	December - October
Resulting Fatalities	12	(27%)	(45%)	(54%)
Serious Injury Crashes	67	6:00pm - 8:59pm	Saturday	June
		(27%)	(24%)	(15%)



House District 67 Crashes

Interstate Crashes

- Fatal
- Serious Injury

Non-interstate Crashes

- Fatal
- Serious Injury

The blue gradient represents the density of all crashes.

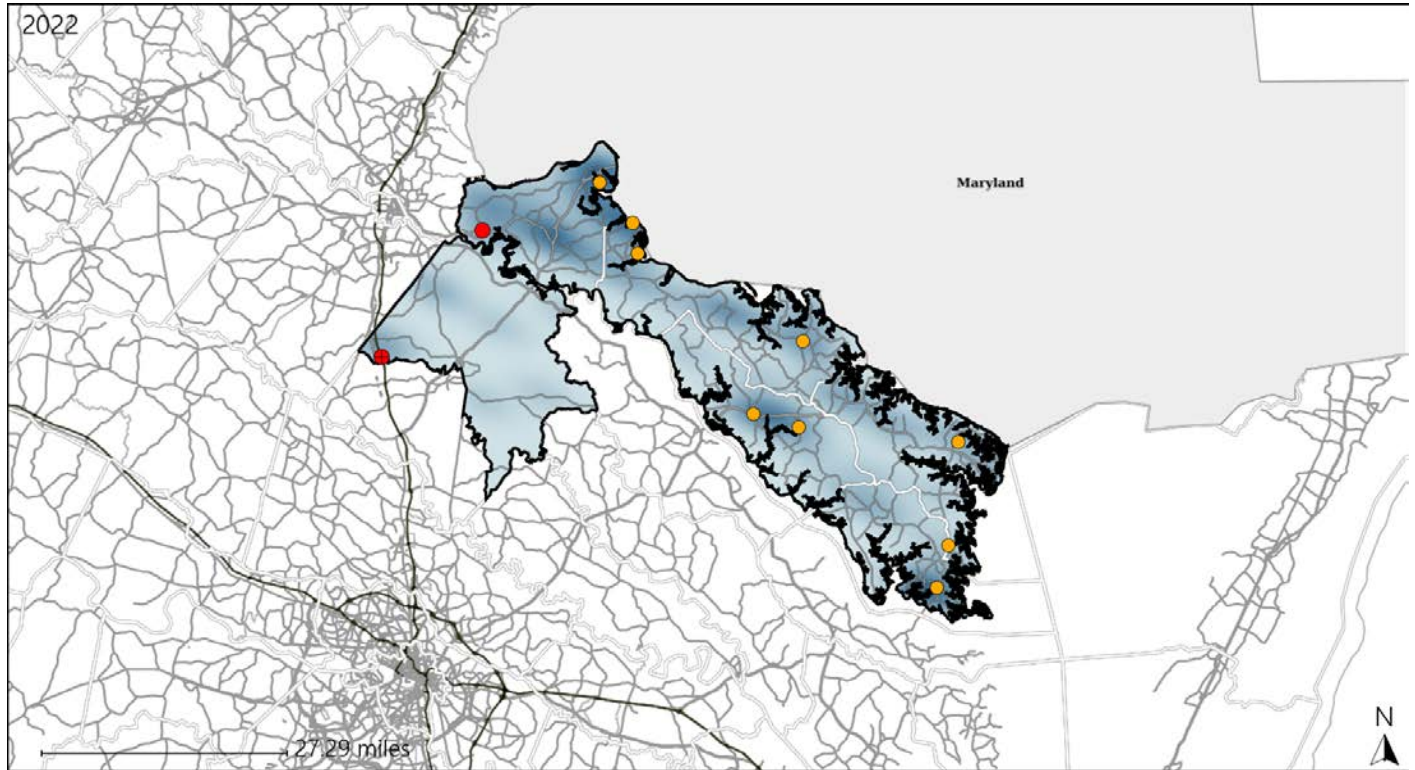


Available Crash Data - Calendar Year (CY)	CY 2019	CY 2020	CY 2021	CY 2022
Total Crashes	1072	918	1045	1076
Fatal Crashes	18	19	24	11
Injury Crashes	339	259	282	267

Virginia House District 67 Alcohol Crash Statistics

Report Generated May, 2023

	Count	Highest Time Period(s)	Highest Day(s)	Highest Month(s)
Fatal Crashes	2	3:00am - 5:59am	Friday • Tuesday	October • September
Resulting Fatalities	3	6:00am - 8:59am (100%)	(100%)	(100%)
Serious Injury Crashes	9	3:00pm - 5:59pm (44%)	Saturday (44%)	June (44%)



House District 67 Alcohol-Related Crashes

Interstate Crashes Non-interstate Crashes
 ● Fatal ● Fatal
 ⊕ Serious Injury ⊕ Serious Injury

The blue gradient represents the density of all alcohol-related crashes.

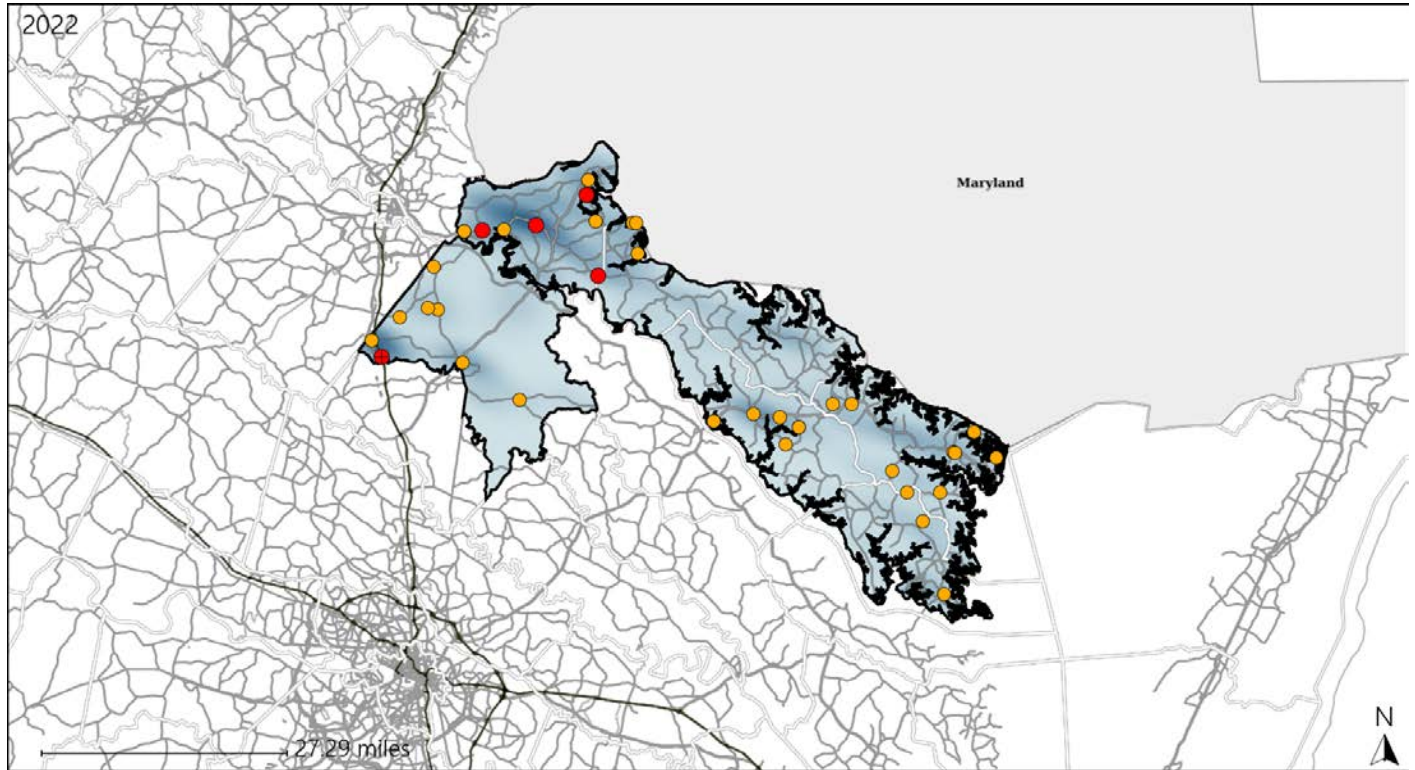


Available Crash Data - Calendar Year (CY)	CY 2019	CY 2020	CY 2021	CY 2022
Total Crashes	1072	918	1045	1076
Fatal Crashes	18	19	24	11
Injury Crashes	339	259	282	267
Alcohol-Related Fatal Crashes	6	6	11	2
Percent of Alcohol-Related Fatal Crashes to Total Fatal Crashes	33%	32%	46%	18%
Alcohol-Related Injury Crashes	48	40	40	31
Percent of Alcohol-Related Injury Crashes to Total Injury Crashes	14%	15%	14%	12%

Virginia House District 67 Speed Crash Statistics

Report Generated May, 2023

	Count	Highest Time Period(s)	Highest Day(s)	Highest Month(s)
Fatal Crashes	5	3:00am - 5:59am	Friday • Monday	December
Resulting Fatalities	6	6:00am - 8:59am (40%)	(40%)	(40%)
Serious Injury Crashes	32	6:00pm - 8:59pm (28%)	Friday • Monday (38%)	August (16%)



House District 67 Speed-Related Crashes

Interstate Crashes

Non-interstate Crashes

- Fatal
- Serious Injury

- Fatal
- Serious Injury

The blue gradient represents the density of all speed-related crashes.

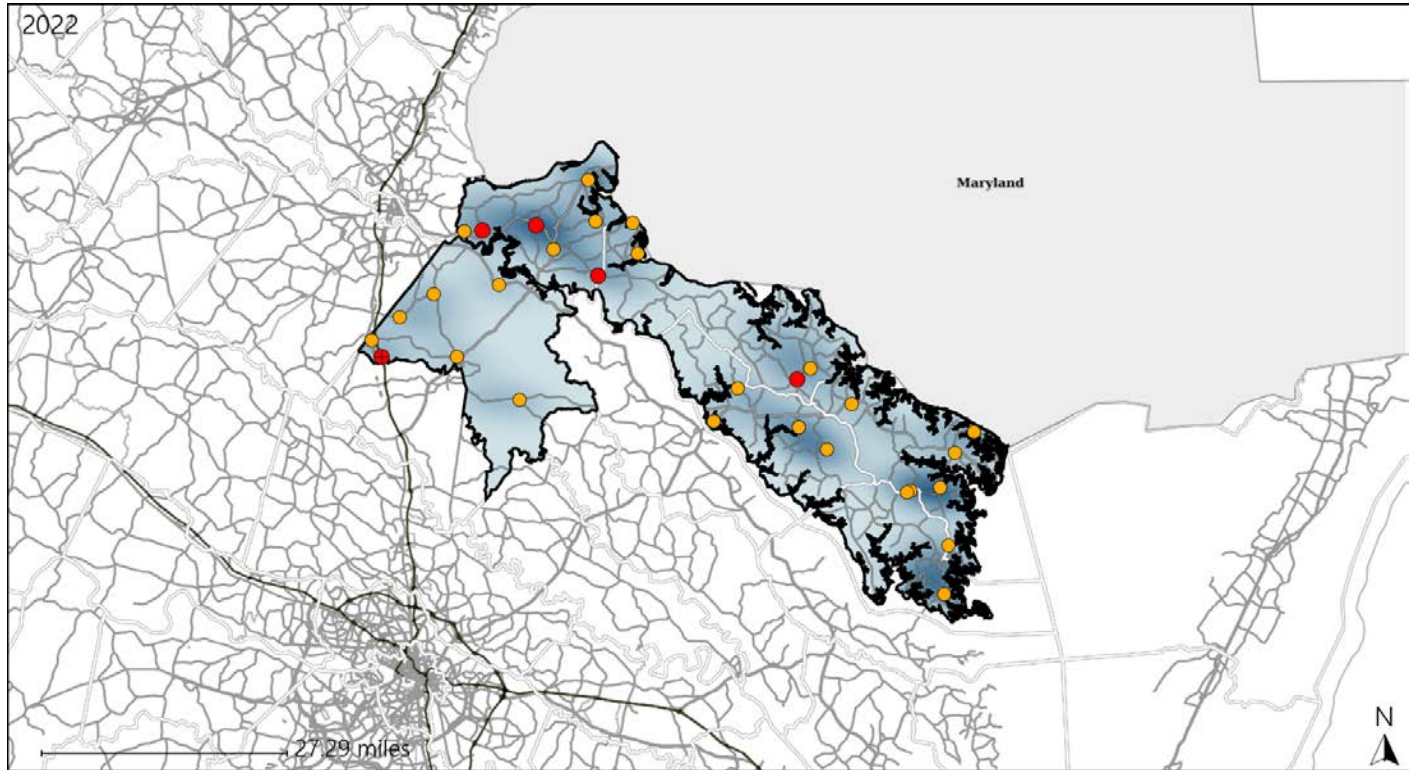


Available Crash Data - Calendar Year (CY)	CY 2019	CY 2020	CY 2021	CY 2022
Total Crashes	1072	918	1045	1076
Fatal Crashes	18	19	24	11
Injury Crashes	339	259	282	267
Speed-Related Fatal Crashes	9	11	19	5
Percent of Speed-Related Fatal Crashes to Total Fatal Crashes	50%	58%	79%	45%
Speed-Related Injury Crashes	102	82	89	88
Percent of Speed-Related Injury Crashes to Total Injury Crashes	30%	32%	32%	33%

Virginia House District 67 Unrestrained Crash Statistics

Report Generated May, 2023

	Count	Highest Time Period(s)	Highest Day(s)	Highest Month(s)
Fatal Crashes	5	3:00am - 5:59am	Tuesday	December
Unrestrained Fatalities	6	3:00pm - 5:59pm (40%)	(40%)	(40%)
Serious Injury Crashes	26	6:00pm - 8:59pm (35%)	Saturday (31%)	March (19%)



House District 67 Unrestrained-Related Crashes

Interstate Crashes

Non-interstate Crashes

- Fatal
- Serious Injury

- Fatal
- Serious Injury

The blue gradient represents the density of all unrestrained-related crashes.

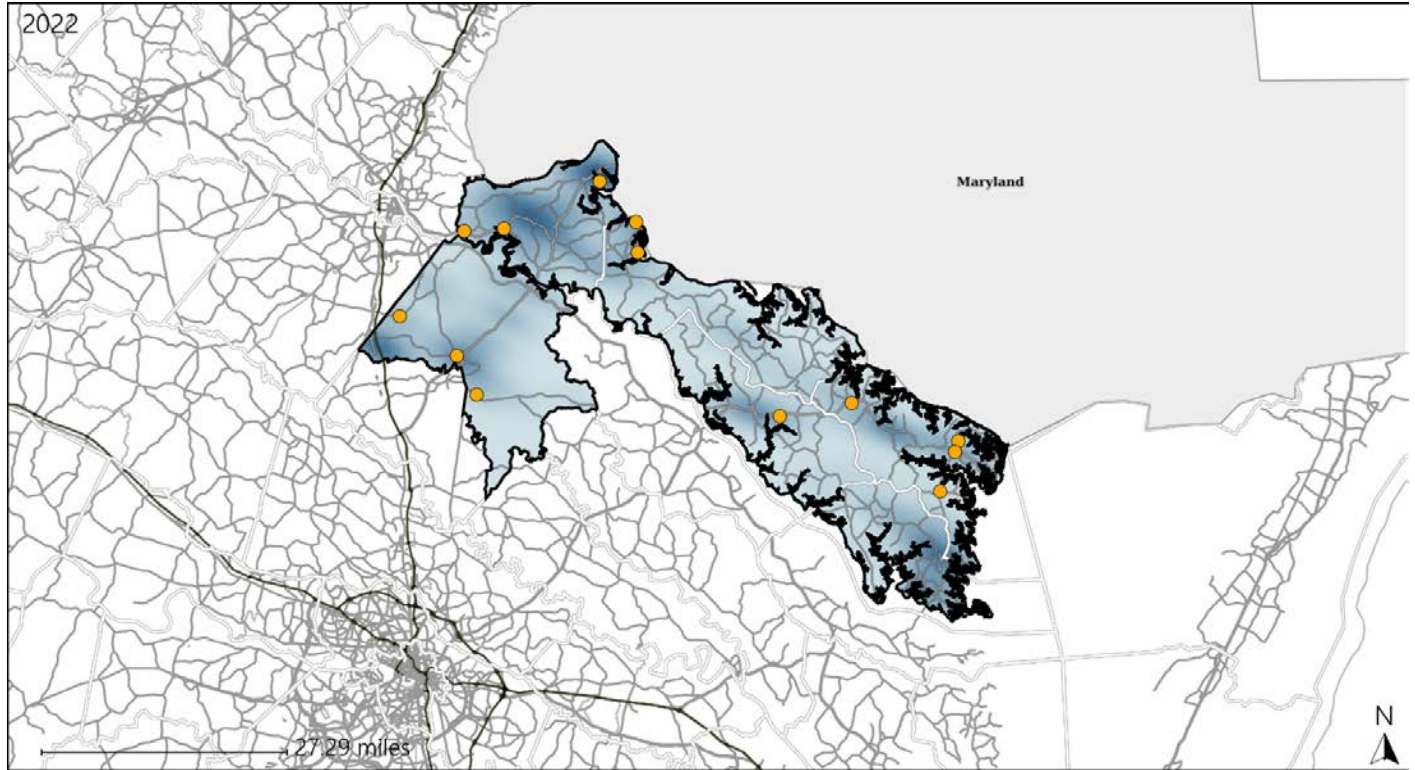


Available Crash Data - Calendar Year (CY)	CY 2019	CY 2020	CY 2021	CY 2022
Total Crashes	1072	918	1045	1076
Fatalities	18	20	26	12
Injuries	510	363	410	400
Unrestrained Fatalities	14	14	10	6
Percent of Unrestrained Fatalities to Total Fatalities	78%	70%	38%	50%
Unrestrained Injuries	58	63	76	71
Percent of Unrestrained Injuries to Total Injuries	11%	17%	19%	18%

Virginia House District 67 Distracted Driving Crash Statistics

Report Generated May, 2023

	Count	Highest Time Period(s)	Highest Day(s)	Highest Month(s)
Fatal Crashes	0	-	-	-
Resulting Fatalities	0	-	-	-
Serious Injury Crashes	13	6:00pm - 8:59pm (38%)	Saturday (31%)	March (31%)



House District 67 Distracted Driving-Related Crashes

- | | |
|--------------------|------------------------|
| Interstate Crashes | Non-interstate Crashes |
| Fatal | Fatal |
| Serious Injury | Serious Injury |

The blue gradient represents the density of all distracted driving-related crashes.



Available Crash Data - Calendar Year (CY)	CY 2019	CY 2020	CY 2021	CY 2022
Total Crashes	1072	918	1045	1076
Fatal Crashes	18	19	24	11
Injury Crashes	339	259	282	267
Distracted Driving-Related Fatal Crashes	1	1	1	0
Percent of Distracted Driving-Related Fatal Crashes to Total Fatal Crashes	6%	5%	4%	0%
Distracted Driving-Related Injury Crashes	75	50	58	56
Percent of Distracted Driving-Related Injury Crashes to Total Injury Crashes	22%	19%	21%	21%