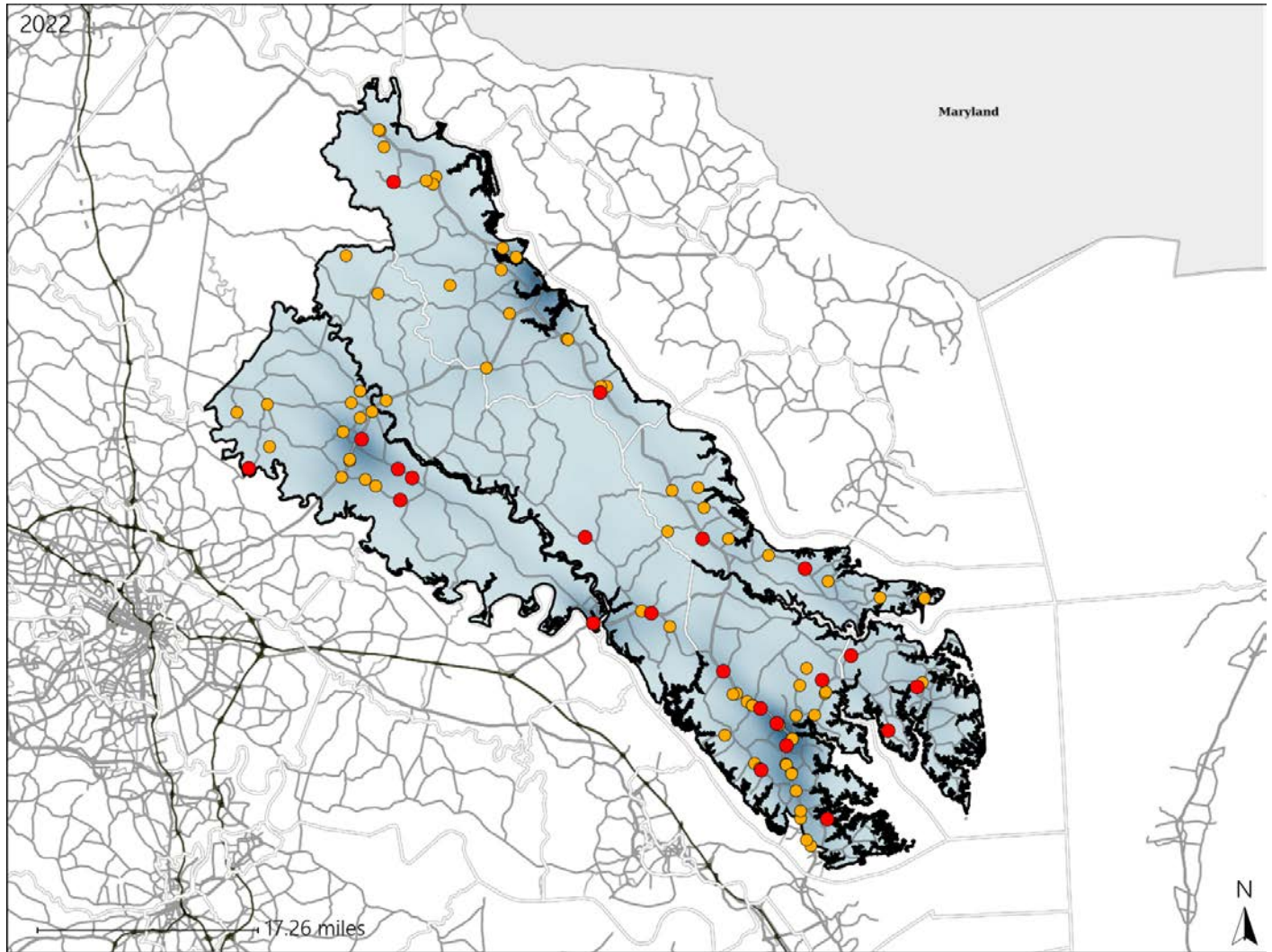


Virginia House District 68 Crash Statistics

Report Generated May, 2023

	Count	Highest Time Period(s)	Highest Day(s)	Highest Month(s)
Fatal Crashes	22	6:00pm - 8:59pm	Sunday • Tuesday	October
Resulting Fatalities	24	(27%)	(46%)	(18%)
Serious Injury Crashes	76	Noon - 2:59pm	Friday	November
		(17%)	(22%)	(14%)



House District 68 Crashes

Interstate Crashes

- Fatal
- Serious Injury

Non-interstate Crashes

- Fatal
- Serious Injury

The blue gradient represents the density of all crashes.

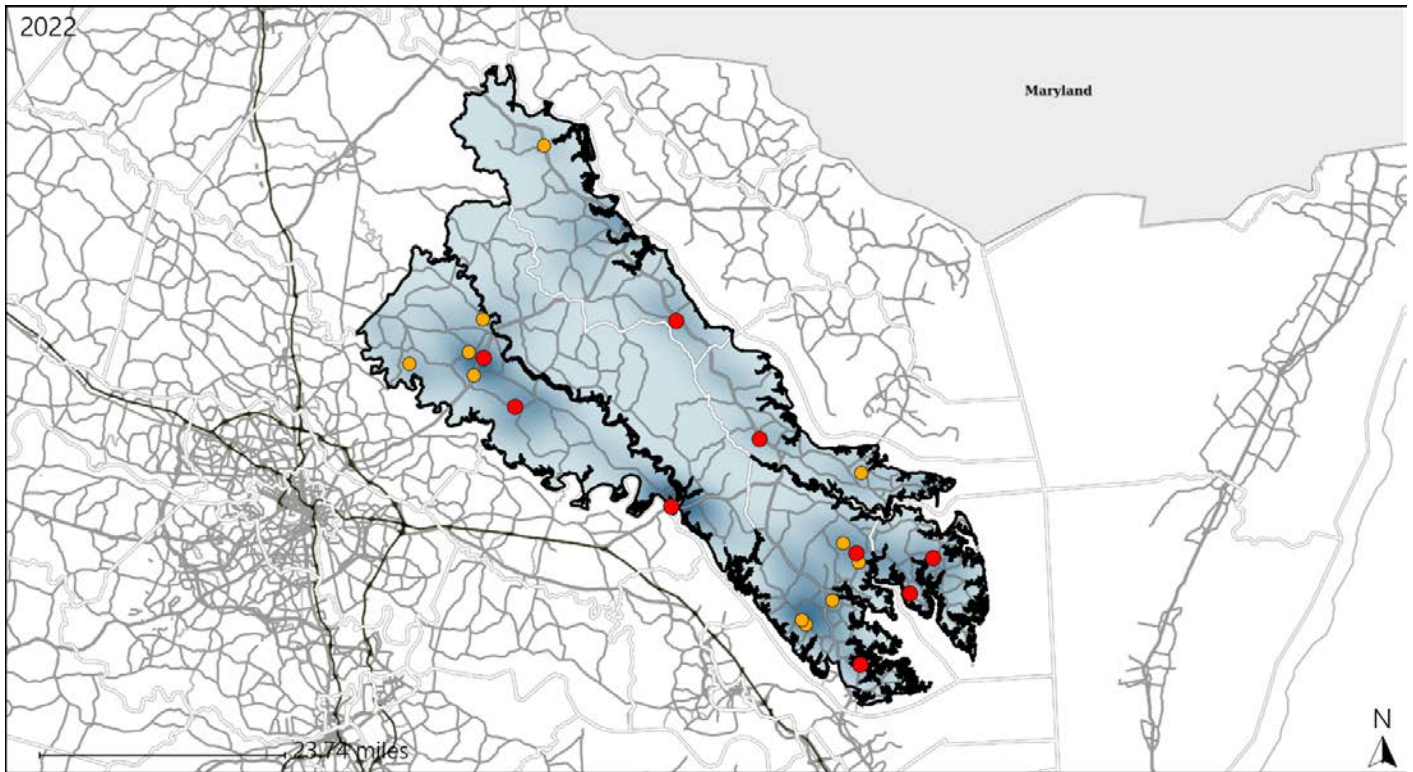


Available Crash Data - Calendar Year (CY)	CY 2019	CY 2020	CY 2021	CY 2022
Total Crashes	1192	1029	1159	1047
Fatal Crashes	11	19	25	22
Injury Crashes	403	342	371	344

Virginia House District 68 Alcohol Crash Statistics

Report Generated May, 2023

	Count	Highest Time Period(s)	Highest Day(s)	Highest Month(s)
Fatal Crashes	9	9:00pm - 11:59pm	Saturday	February • May
Resulting Fatalities	9	(44%)	(33%)	(44%)
Serious Injury Crashes	11	9:00pm - 11:59pm Midnight - 2:59am	Friday • Wednesday	October
		(72%)	(54%)	(27%)



House District 68 Alcohol-Related Crashes

Interstate Crashes Non-interstate Crashes

- Fatal ● Fatal
- ⊕ Serious Injury ⊕ Serious Injury

The blue gradient represents the density of all alcohol-related crashes.

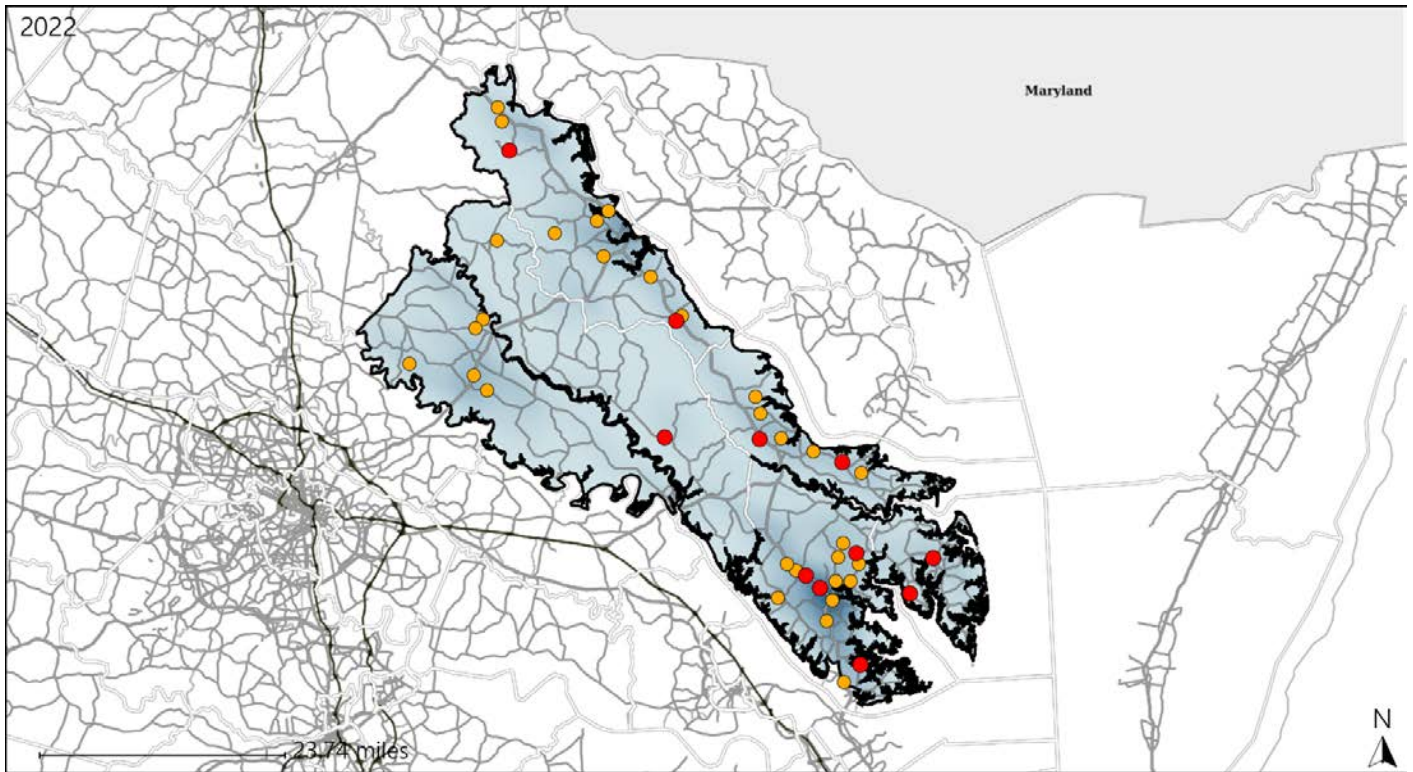


Available Crash Data - Calendar Year (CY)	CY 2019	CY 2020	CY 2021	CY 2022
Total Crashes	1192	1029	1159	1047
Fatal Crashes	11	19	25	22
Injury Crashes	403	342	371	344
Alcohol-Related Fatal Crashes	4	2	6	9
Percent of Alcohol-Related Fatal Crashes to Total Fatal Crashes	36%	11%	24%	41%
Alcohol-Related Injury Crashes	35	34	37	31
Percent of Alcohol-Related Injury Crashes to Total Injury Crashes	9%	10%	10%	9%

Virginia House District 68 Speed Crash Statistics

Report Generated May, 2023

	Count	Highest Time Period(s)	Highest Day(s)	Highest Month(s)
Fatal Crashes	11	9:00pm - 11:59pm	Tuesday	May
Resulting Fatalities	11	(27%)	(36%)	(27%)
Serious Injury Crashes	31	9:00pm - 11:59pm Midnight - 2:59am	Friday	April • December
		(38%)	(29%)	(32%)



House District 68 Speed-Related Crashes

Interstate Crashes Non-interstate Crashes
 ● Fatal ● Fatal
 ⊕ Serious Injury ⊕ Serious Injury

The blue gradient represents the density of all speed-related crashes.

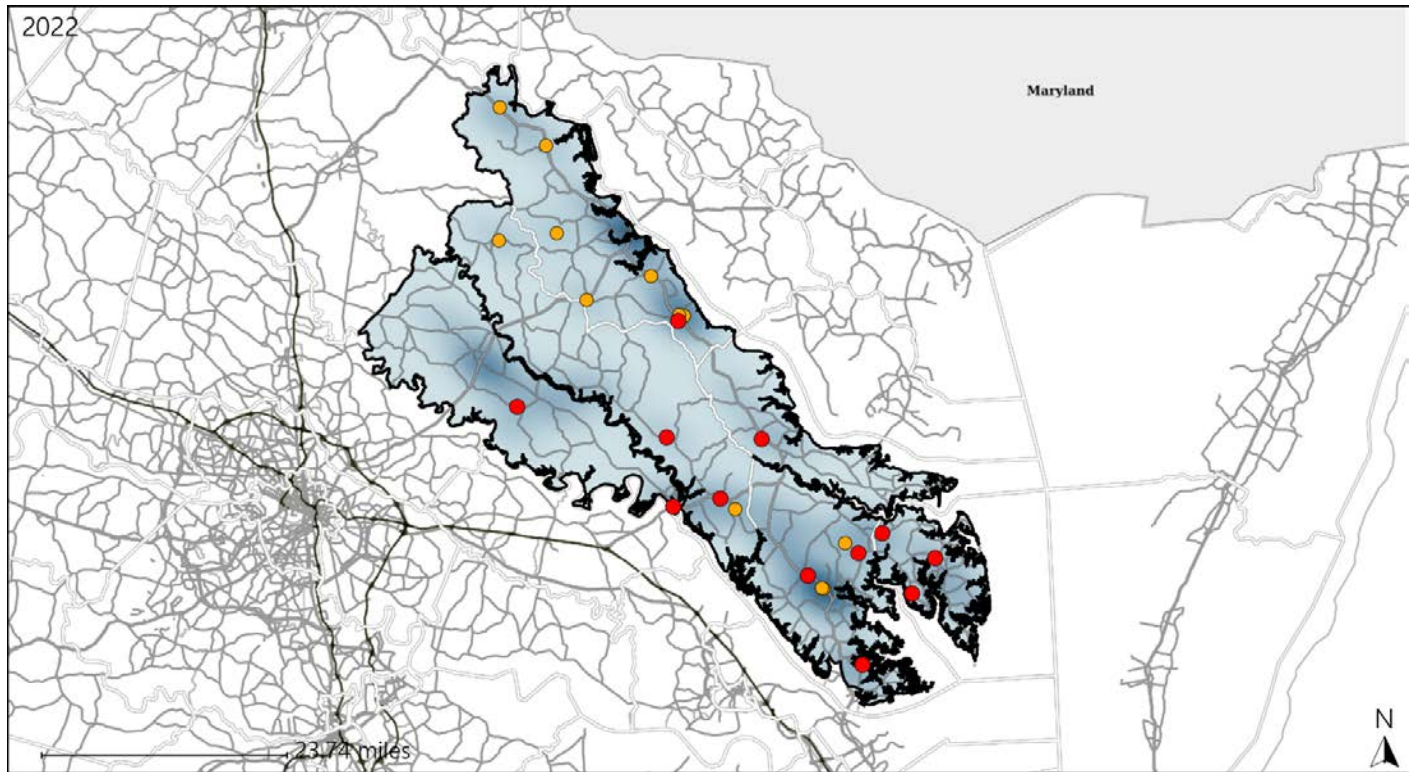


Available Crash Data - Calendar Year (CY)	CY 2019	CY 2020	CY 2021	CY 2022
Total Crashes	1192	1029	1159	1047
Fatal Crashes	11	19	25	22
Injury Crashes	403	342	371	344
Speed-Related Fatal Crashes	7	7	9	11
Percent of Speed-Related Fatal Crashes to Total Fatal Crashes	64%	37%	36%	50%
Speed-Related Injury Crashes	97	81	95	101
Percent of Speed-Related Injury Crashes to Total Injury Crashes	24%	24%	26%	29%

Virginia House District 68 Unrestrained Crash Statistics

Report Generated May, 2023

	Count	Highest Time Period(s)	Highest Day(s)	Highest Month(s)
Fatal Crashes	12	9:00pm - 11:59pm	Tuesday	August • February
Unrestrained Fatalities	13	(33%)	(33%)	(34%)
Serious Injury Crashes	13	9:00am - 11:59am 9:00pm - 11:59pm	Friday • Saturday	July • March
		(62%)	(46%)	(46%)



House District 68 Unrestrained-Related Crashes

- | | |
|--------------------|------------------------|
| Interstate Crashes | Non-interstate Crashes |
| ● Fatal | ● Fatal |
| ⊕ Serious Injury | ⊕ Serious Injury |

The blue gradient represents the density of all unrestrained-related crashes.

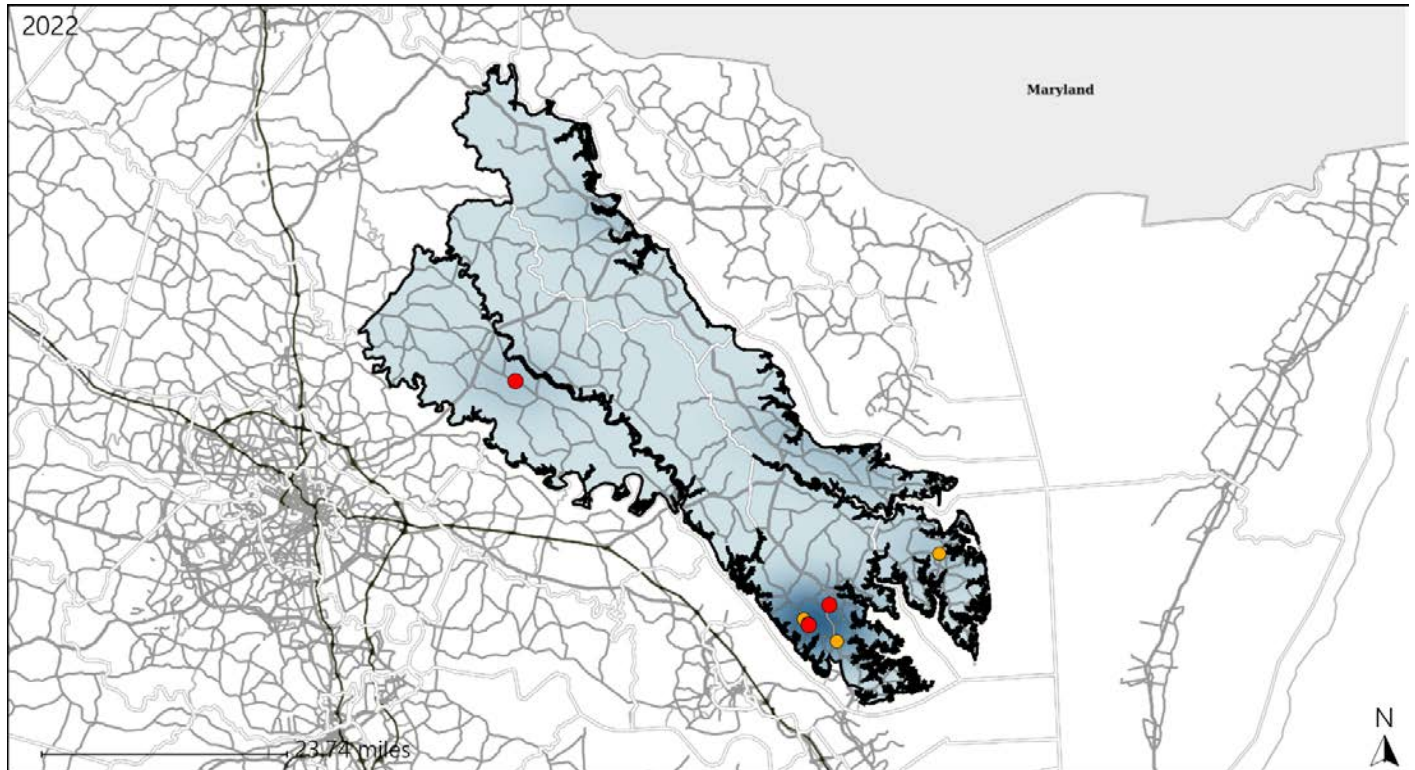


Available Crash Data - Calendar Year (CY)	CY 2019	CY 2020	CY 2021	CY 2022
Total Crashes	1192	1029	1159	1047
Fatalities	11	21	25	24
Injuries	617	490	544	524
Unrestrained Fatalities	4	7	9	13
Percent of Unrestrained Fatalities to Total Fatalities	36%	33%	36%	54%
Unrestrained Injuries	51	65	85	64
Percent of Unrestrained Injuries to Total Injuries	8%	13%	16%	12%

Virginia House District 68 Pedestrian Crash Statistics

Report Generated May, 2023

	Count	Highest Time Period(s)	Highest Day(s)	Highest Month(s)
Fatal Crashes	3	6:00pm - 8:59pm	Sunday	January
Pedestrian Fatalities	3	(67%)	(67%)	(67%)
Serious Injury Crashes	4	6:00pm - 8:59pm	Wednesday	August • February
		(50%)	(50%)	(50%)



House District 68 Pedestrian-Related Crashes

Interstate Crashes

Non-interstate Crashes

- Fatal
- Serious Injury

- Fatal
- Serious Injury

The blue gradient represents the density of all pedestrian-related crashes.

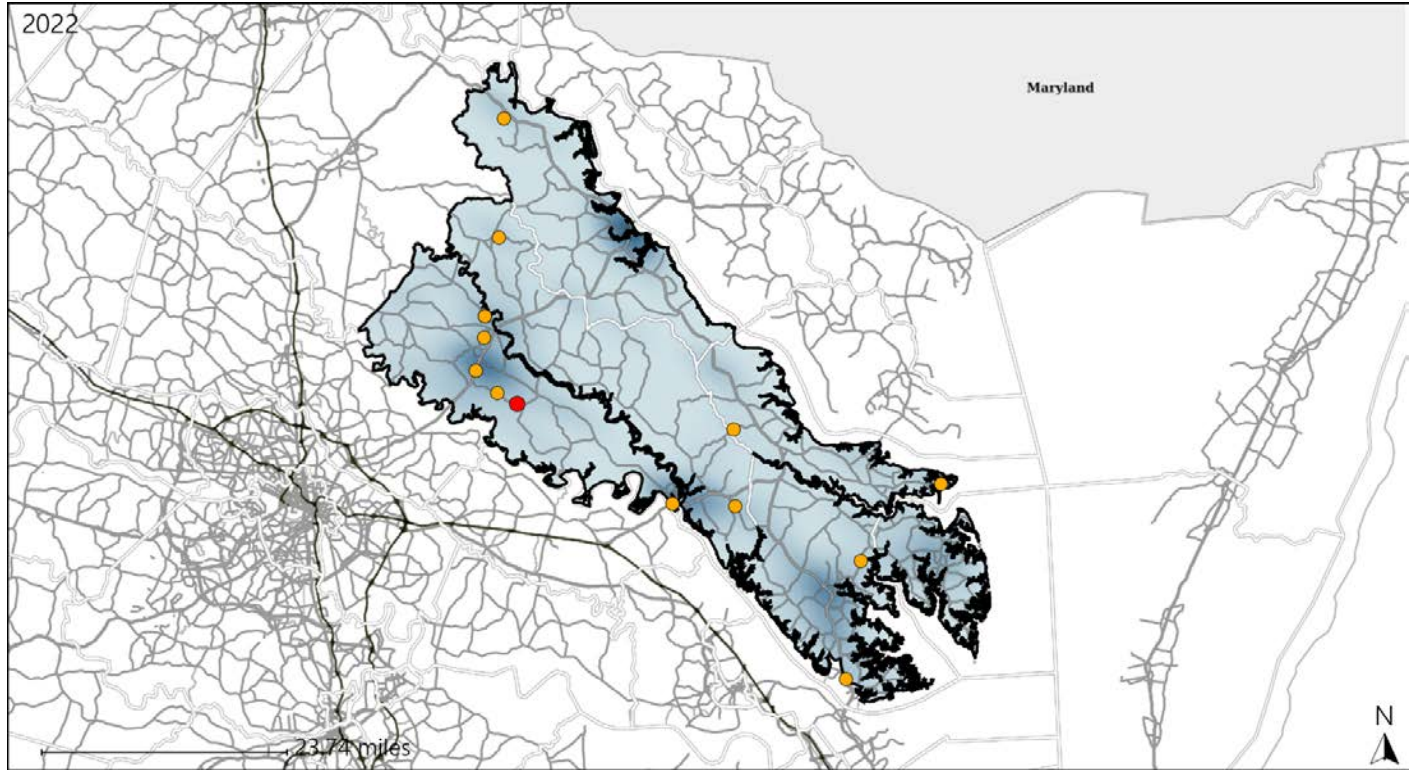


Available Crash Data - Calendar Year (CY)	CY 2019	CY 2020	CY 2021	CY 2022
Total Crashes	1192	1029	1159	1047
Fatal Crashes	11	19	25	22
Injury Crashes	403	342	371	344
Pedestrian-Related Fatal Crashes	1	0	2	3
Percent of Pedestrian-Related Fatal Crashes to Total Fatal Crashes	9%	0%	8%	14%
Pedestrian-Related Injury Crashes	9	3	6	7
Percent of Pedestrian-Related Injury Crashes to Total Injury Crashes	2%	1%	2%	2%

Virginia House District 68 Distracted Driving Crash Statistics

Report Generated May, 2023

	Count	Highest Time Period(s)	Highest Day(s)	Highest Month(s)
Fatal Crashes	1	9:00pm - 11:59pm	Sunday	June
Resulting Fatalities	1	(100%)	(100%)	(100%)
Serious Injury Crashes	13	Noon - 2:59pm	Thursday	November
		(31%)	(31%)	(23%)



House District 68 Distracted Driving-Related Crashes

- | | |
|--------------------|------------------------|
| Interstate Crashes | Non-interstate Crashes |
| Fatal | Fatal |
| Serious Injury | Serious Injury |

The blue gradient represents the density of all distracted driving-related crashes.



Available Crash Data - Calendar Year (CY)	CY 2019	CY 2020	CY 2021	CY 2022
Total Crashes	1192	1029	1159	1047
Fatal Crashes	11	19	25	22
Injury Crashes	403	342	371	344
Distracted Driving-Related Fatal Crashes	1	4	5	1
Percent of Distracted Driving-Related Fatal Crashes to Total Fatal Crashes	9%	21%	20%	5%
Distracted Driving-Related Injury Crashes	85	71	66	54
Percent of Distracted Driving-Related Injury Crashes to Total Injury Crashes	21%	21%	18%	16%