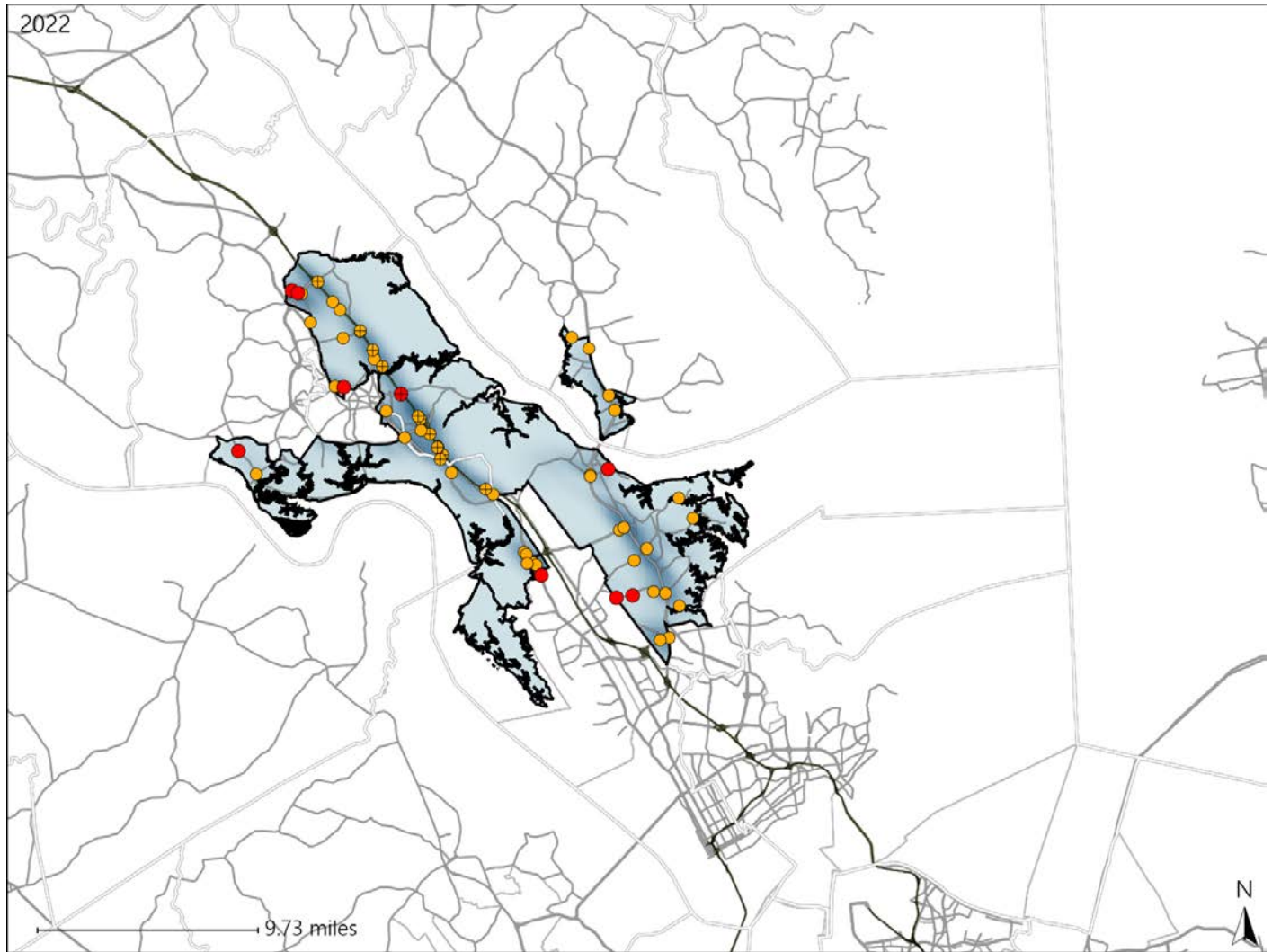


# Virginia House District 69 Crash Statistics

Report Generated May, 2023

	Count	Highest Time Period(s)	Highest Day(s)	Highest Month(s)
<b>Fatal Crashes</b>	<b>9</b>	<b>6:00pm - 8:59pm</b>	<b>Thursday</b>	<b>January</b>
<b>Resulting Fatalities</b>	<b>11</b>	(44%)	(33%)	(22%)
<b>Serious Injury Crashes</b>	<b>50</b>	<b>Noon - 2:59pm</b>	<b>Friday</b>	<b>December</b>
		(22%)	(26%)	(16%)



## House District 69 Crashes

Interstate Crashes

- Fatal
- Serious Injury

Non-interstate Crashes

- Fatal
- Serious Injury

The blue gradient represents the density of all crashes.

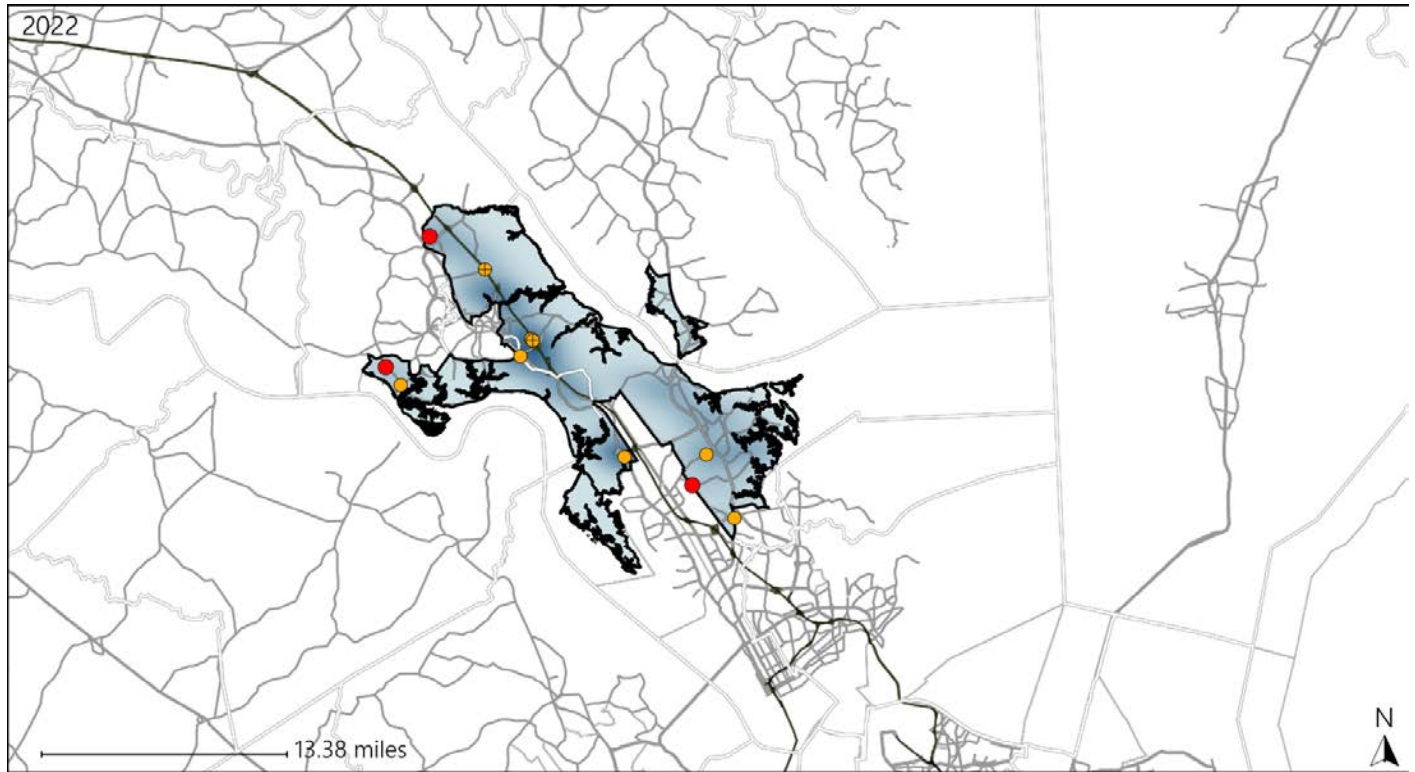


Available Crash Data - Calendar Year (CY)	CY 2019	CY 2020	CY 2021	CY 2022
Total Crashes	1231	955	1104	1065
Fatal Crashes	6	10	7	9
Injury Crashes	433	304	345	280

# Virginia House District 69 Alcohol Crash Statistics

Report Generated May, 2023

	Count	Highest Time Period(s)	Highest Day(s)	Highest Month(s)
<b>Fatal Crashes</b>	<b>3</b>	<b>6:00pm - 8:59pm</b>	<b>Saturday • Thursday</b>	<b>March • May</b>
<b>Resulting Fatalities</b>	<b>3</b>	(67%)	(66%)	(66%)
<b>Serious Injury Crashes</b>	<b>8</b>	<b>6:00pm - 8:59pm</b>	<b>Friday • Saturday</b>	<b>August • July</b>
		(50%)	(50%)	(50%)



## House District 69 Alcohol-Related Crashes

Interstate Crashes                      Non-interstate Crashes  
 ● Fatal                                      ● Fatal  
 ⊕ Serious Injury                          ⊕ Serious Injury

The blue gradient represents the density of all alcohol-related crashes.

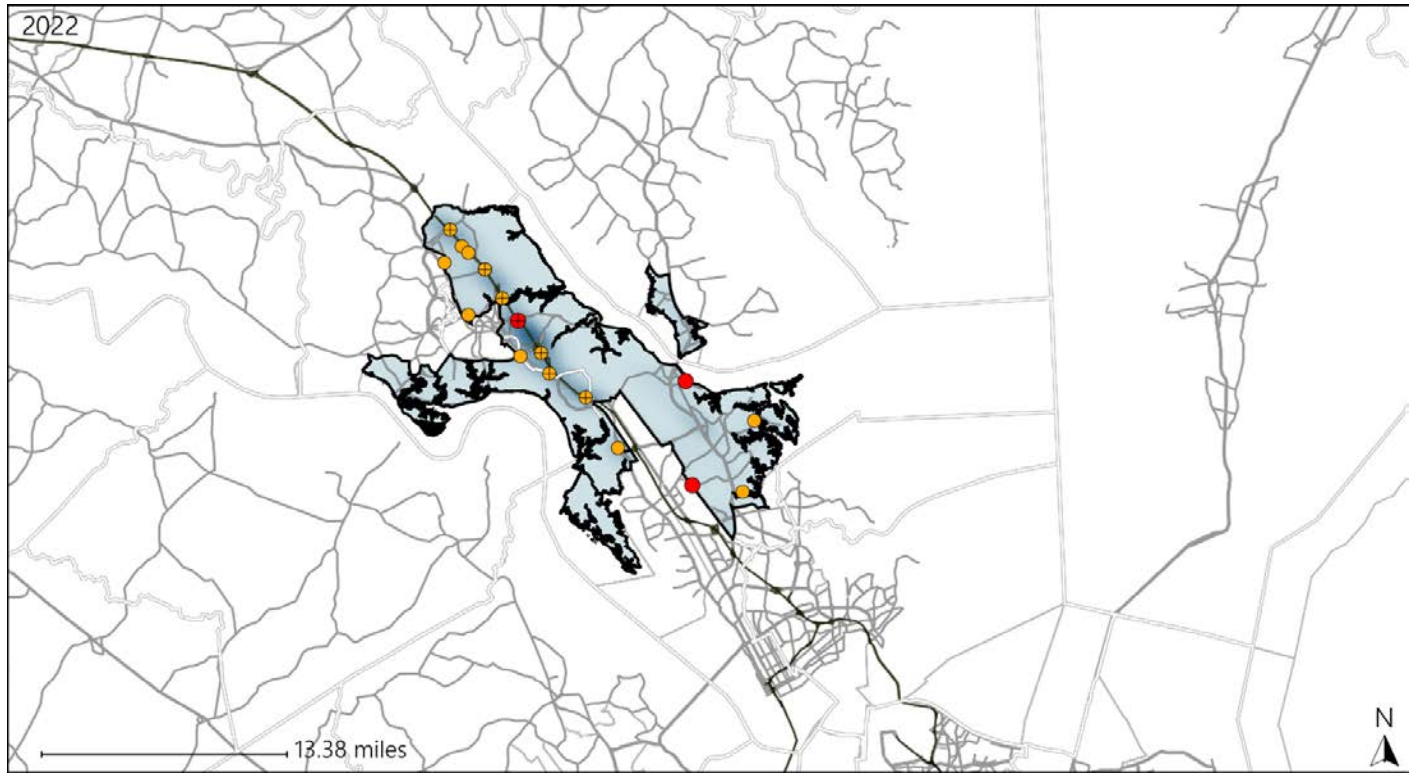


Available Crash Data - Calendar Year (CY)	CY 2019	CY 2020	CY 2021	CY 2022
<b>Total Crashes</b>	<b>1231</b>	<b>955</b>	<b>1104</b>	<b>1065</b>
<b>Fatal Crashes</b>	<b>6</b>	<b>10</b>	<b>7</b>	<b>9</b>
<b>Injury Crashes</b>	<b>433</b>	<b>304</b>	<b>345</b>	<b>280</b>
<b>Alcohol-Related Fatal Crashes</b>	<b>2</b>	<b>4</b>	<b>3</b>	<b>3</b>
<b>Percent of Alcohol-Related Fatal Crashes to Total Fatal Crashes</b>	<b>33%</b>	<b>40%</b>	<b>43%</b>	<b>33%</b>
<b>Alcohol-Related Injury Crashes</b>	<b>26</b>	<b>30</b>	<b>28</b>	<b>24</b>
<b>Percent of Alcohol-Related Injury Crashes to Total Injury Crashes</b>	<b>6%</b>	<b>10%</b>	<b>8%</b>	<b>9%</b>

# Virginia House District 69 Speed Crash Statistics

Report Generated May, 2023

	Count	Highest Time Period(s)	Highest Day(s)	Highest Month(s)
<b>Fatal Crashes</b>	<b>3</b>	3:00pm - 5:59pm	Friday - Thursday	December - January
<b>Resulting Fatalities</b>	<b>5</b>	6:00pm - 8:59pm (66%)	(66%)	(66%)
<b>Serious Injury Crashes</b>	<b>15</b>	9:00pm - 11:59pm Noon - 2:59pm (54%)	Friday (40%)	December (33%)



### House District 69 Speed-Related Crashes

Interstate Crashes                      Non-interstate Crashes  
 ● Fatal                                      ● Fatal  
 ⊕ Serious Injury                          ⊕ Serious Injury

The blue gradient represents the density of all speed-related crashes.

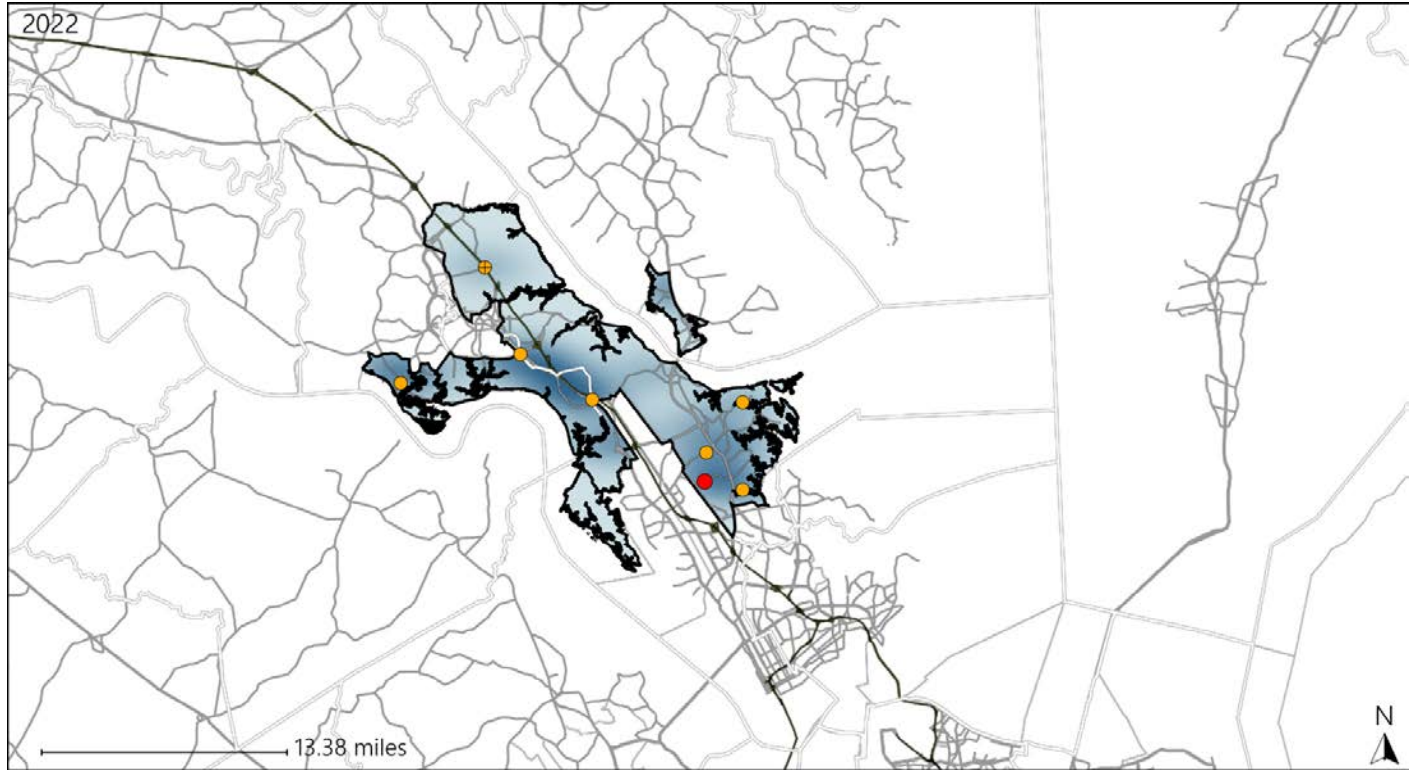


Available Crash Data - Calendar Year (CY)	CY 2019	CY 2020	CY 2021	CY 2022
<b>Total Crashes</b>	<b>1231</b>	<b>955</b>	<b>1104</b>	<b>1065</b>
<b>Fatal Crashes</b>	<b>6</b>	<b>10</b>	<b>7</b>	<b>9</b>
<b>Injury Crashes</b>	<b>433</b>	<b>304</b>	<b>345</b>	<b>280</b>
<b>Speed-Related Fatal Crashes</b>	<b>1</b>	<b>7</b>	<b>5</b>	<b>3</b>
<b>Percent of Speed-Related Fatal Crashes to Total Fatal Crashes</b>	<b>17%</b>	<b>70%</b>	<b>71%</b>	<b>33%</b>
<b>Speed-Related Injury Crashes</b>	<b>92</b>	<b>85</b>	<b>71</b>	<b>57</b>
<b>Percent of Speed-Related Injury Crashes to Total Injury Crashes</b>	<b>21%</b>	<b>28%</b>	<b>21%</b>	<b>20%</b>

# Virginia House District 69 Unrestrained Crash Statistics

Report Generated May, 2023

	Count	Highest Time Period(s)	Highest Day(s)	Highest Month(s)
<b>Fatal Crashes</b>	<b>1</b>	<b>6:00am - 8:59am</b>	<b>Tuesday</b>	<b>April</b>
<b>Unrestrained Fatalities</b>	<b>1</b>	<b>(100%)</b>	<b>(100%)</b>	<b>(100%)</b>
<b>Serious Injury Crashes</b>	<b>7</b>	<b>9:00pm - 11:59pm</b>	<b>Friday</b>	<b>December</b>
		<b>(43%)</b>	<b>(43%)</b>	<b>(43%)</b>



## House District 69 Unrestrained-Related Crashes

Interstate Crashes

Non-interstate Crashes

- Fatal
- Serious Injury

- Fatal
- Serious Injury

The blue gradient represents the density of all unrestrained-related crashes.

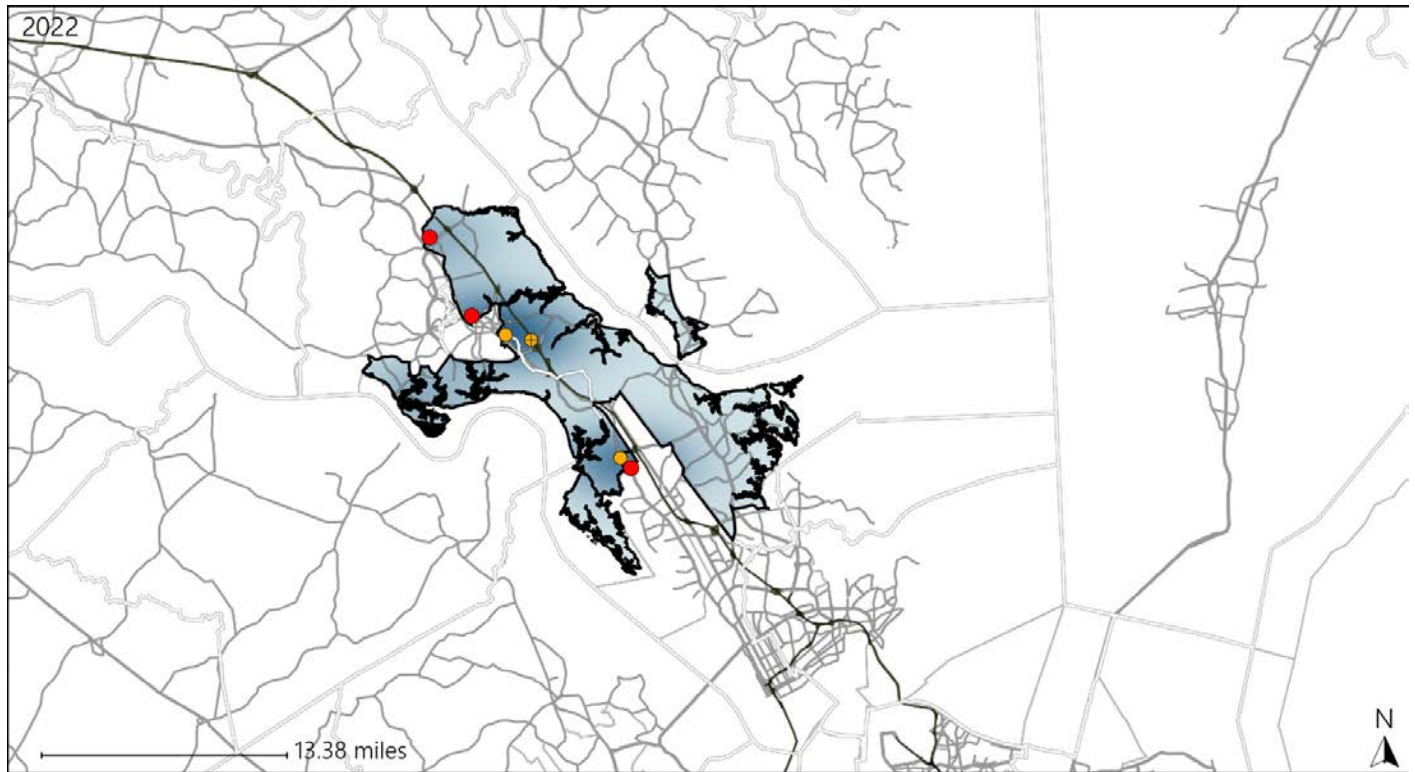


Available Crash Data - Calendar Year (CY)	CY 2019	CY 2020	CY 2021	CY 2022
<b>Total Crashes</b>	<b>1231</b>	<b>955</b>	<b>1104</b>	<b>1065</b>
<b>Fatalities</b>	<b>8</b>	<b>10</b>	<b>8</b>	<b>11</b>
<b>Injuries</b>	<b>704</b>	<b>453</b>	<b>567</b>	<b>417</b>
<b>Unrestrained Fatalities</b>	<b>1</b>	<b>3</b>	<b>2</b>	<b>1</b>
<b>Percent of Unrestrained Fatalities to Total Fatalities</b>	<b>13%</b>	<b>30%</b>	<b>25%</b>	<b>9%</b>
<b>Unrestrained Injuries</b>	<b>27</b>	<b>27</b>	<b>26</b>	<b>23</b>
<b>Percent of Unrestrained Injuries to Total Injuries</b>	<b>4%</b>	<b>6%</b>	<b>5%</b>	<b>6%</b>

# Virginia House District 69 Pedestrian Crash Statistics

Report Generated May, 2023

	Count	Highest Time Period(s)	Highest Day(s)	Highest Month(s)
<b>Fatal Crashes</b>	<b>3</b>	<b>6:00pm - 8:59pm</b>	<b>Thursday</b>	<b>March • November</b>
<b>Pedestrian Fatalities</b>	<b>3</b>	<b>(67%)</b>	<b>(67%)</b>	<b>(66%)</b>
<b>Serious Injury Crashes</b>	<b>3</b>	<b>6:00pm - 8:59pm 9:00pm - 11:59pm</b>	<b>Friday • Saturday</b>	<b>July</b>
		<b>(66%)</b>	<b>(66%)</b>	<b>(100%)</b>



### House District 69 Pedestrian-Related Crashes

- |                    |                        |
|--------------------|------------------------|
| Interstate Crashes | Non-interstate Crashes |
| ● Fatal            | ● Fatal                |
| ⊕ Serious Injury   | ⊕ Serious Injury       |

The blue gradient represents the density of all pedestrian-related crashes.

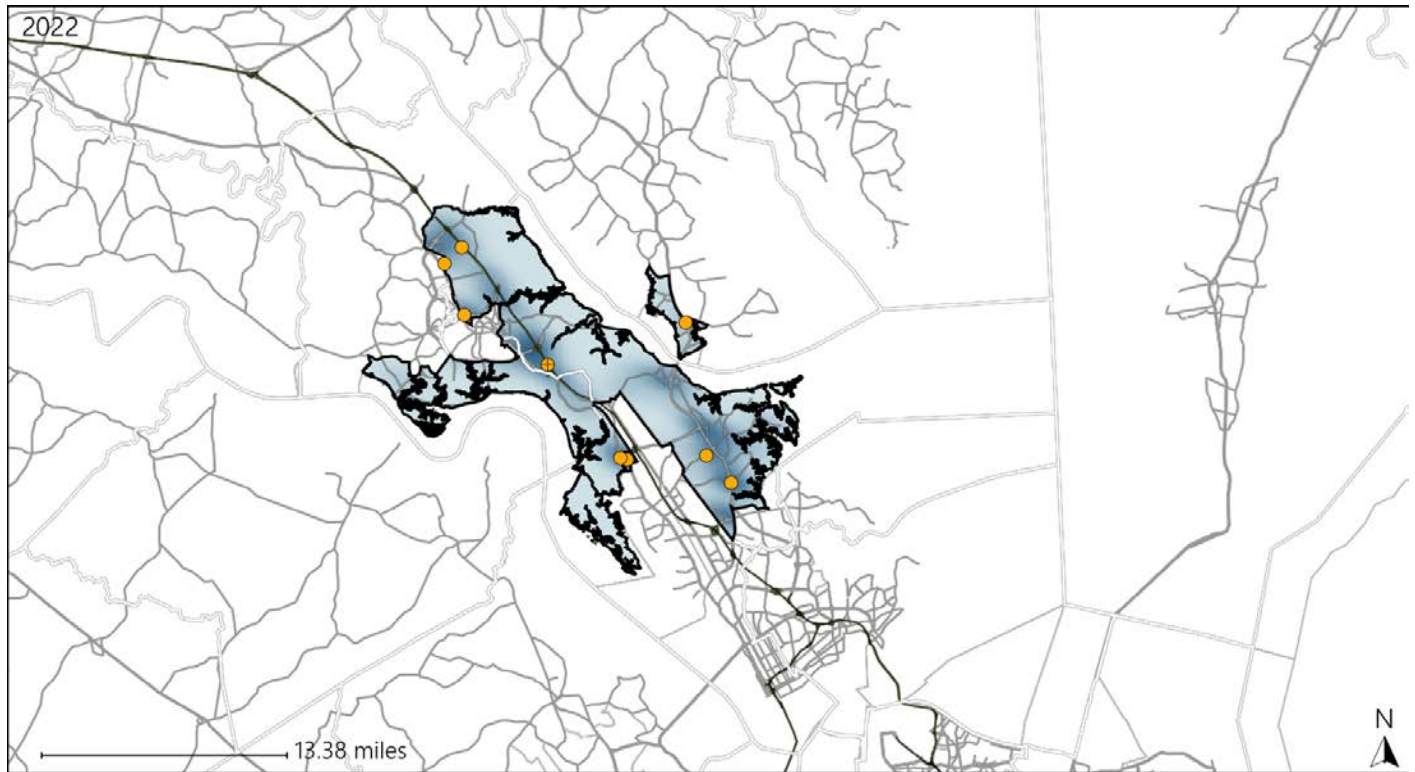


Available Crash Data - Calendar Year (CY)	CY 2019	CY 2020	CY 2021	CY 2022
Total Crashes	1231	955	1104	1065
Fatal Crashes	6	10	7	9
Injury Crashes	433	304	345	280
Pedestrian-Related Fatal Crashes	1	1	1	3
Percent of Pedestrian-Related Fatal Crashes to Total Fatal Crashes	17%	10%	14%	33%
Pedestrian-Related Injury Crashes	14	10	10	4
Percent of Pedestrian-Related Injury Crashes to Total Injury Crashes	3%	3%	3%	1%

# Virginia House District 69 Distracted Driving Crash Statistics

Report Generated May, 2023

	Count	Highest Time Period(s)	Highest Day(s)	Highest Month(s)
<b>Fatal Crashes</b>	0	-	-	-
<b>Resulting Fatalities</b>	0	-	-	-
<b>Serious Injury Crashes</b>	9	3:00pm - 5:59pm 9:00am - 11:59am (44%)	Tuesday (33%)	April - August (22%)



## House District 69 Distracted Driving-Related Crashes

- |                    |                        |
|--------------------|------------------------|
| Interstate Crashes | Non-interstate Crashes |
| ● Fatal            | ● Fatal                |
| ⊕ Serious Injury   | ⊕ Serious Injury       |

The blue gradient represents the density of all distracted driving-related crashes.



Available Crash Data - Calendar Year (CY)	CY 2019	CY 2020	CY 2021	CY 2022
Total Crashes	1231	955	1104	1065
Fatal Crashes	6	10	7	9
Injury Crashes	433	304	345	280
Distracted Driving-Related Fatal Crashes	0	0	1	0
Percent of Distracted Driving-Related Fatal Crashes to Total Fatal Crashes	0%	0%	14%	0%
Distracted Driving-Related Injury Crashes	83	58	73	57
Percent of Distracted Driving-Related Injury Crashes to Total Injury Crashes	19%	19%	21%	20%