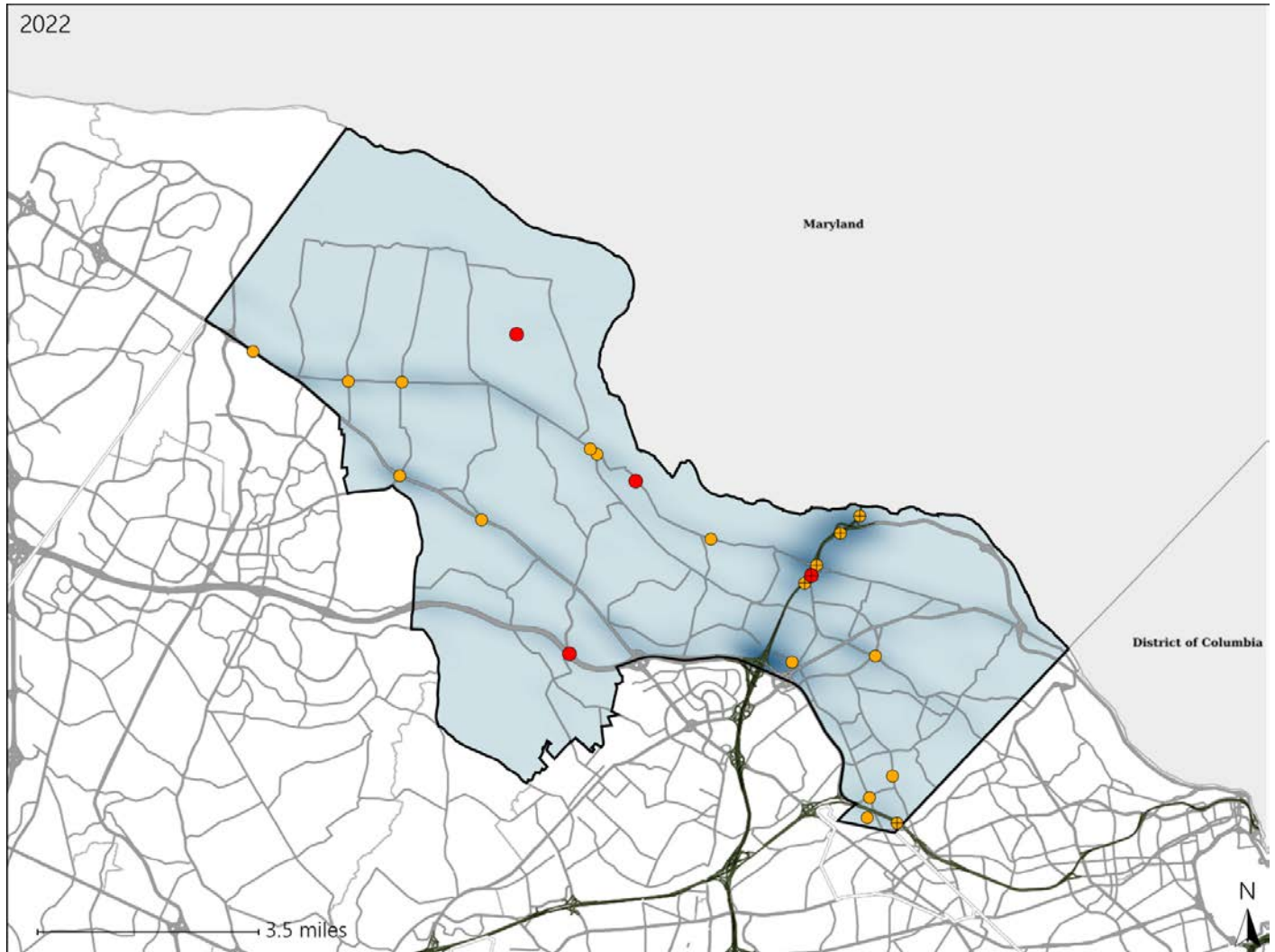


# Virginia House District 6 Crash Statistics

Report Generated May, 2023

	Count	Highest Time Period(s)	Highest Day(s)	Highest Month(s)
<b>Fatal Crashes</b>	<b>4</b>	3:00pm - 5:59pm	Wednesday	March • November
<b>Resulting Fatalities</b>	<b>5</b>	6:00am - 8:59am (50%)	(50%)	(50%)
<b>Serious Injury Crashes</b>	<b>19</b>	3:00pm - 5:59pm 6:00pm - 8:59pm (42%)	Friday (37%)	July (21%)



### House District 6 Crashes

Interstate Crashes

- Fatal
- Serious Injury

Non-interstate Crashes

- Fatal
- Serious Injury

The blue gradient represents the density of all crashes.

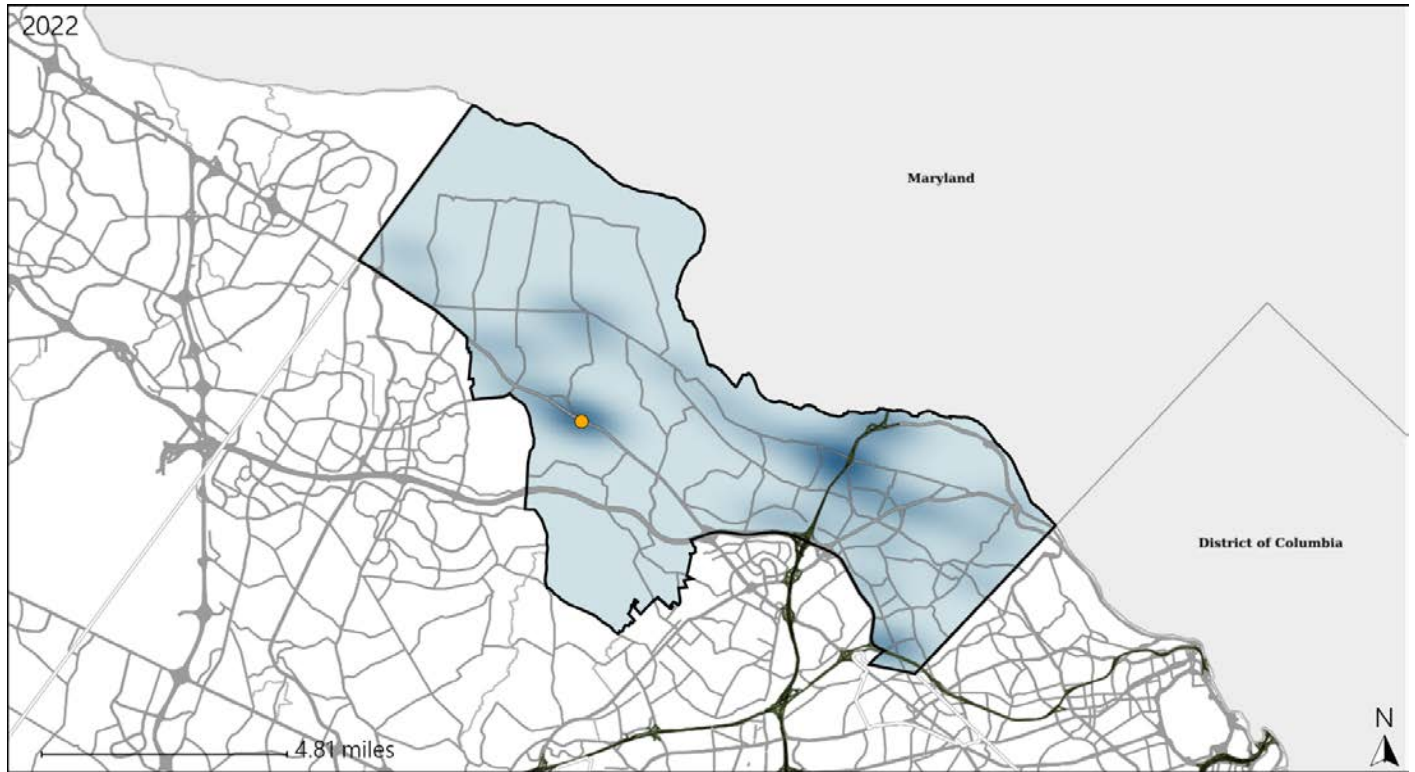


Available Crash Data - Calendar Year (CY)	CY 2019	CY 2020	CY 2021	CY 2022
Total Crashes	1007	593	726	887
Fatal Crashes	2	2	7	4
Injury Crashes	248	162	179	211

# Virginia House District 6 Alcohol Crash Statistics

Report Generated May, 2023

	Count	Highest Time Period(s)	Highest Day(s)	Highest Month(s)
<b>Fatal Crashes</b>	<b>0</b>	-	-	-
<b>Resulting Fatalities</b>	<b>0</b>	-	-	-
<b>Serious Injury Crashes</b>	<b>1</b>	<b>3:00am - 5:59am</b> (100%)	<b>Saturday</b> (100%)	<b>April</b> (100%)



## House District 6 Alcohol-Related Crashes

Interstate Crashes                      Non-interstate Crashes  
 ● Fatal                                      ● Fatal  
 ● Serious Injury                          ● Serious Injury

The blue gradient represents the density of all alcohol-related crashes.

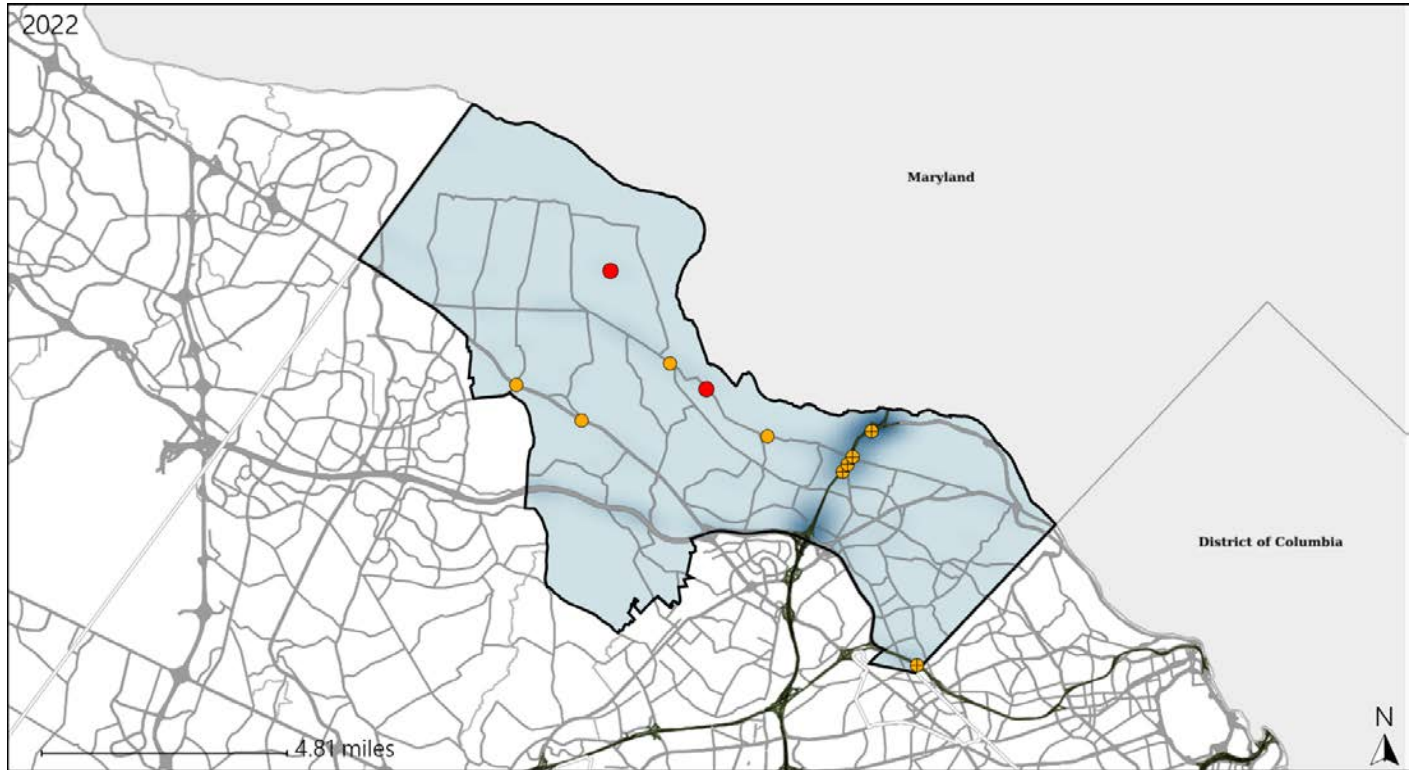


Available Crash Data - Calendar Year (CY)	CY 2019	CY 2020	CY 2021	CY 2022
<b>Total Crashes</b>	<b>1007</b>	<b>593</b>	<b>726</b>	<b>887</b>
<b>Fatal Crashes</b>	<b>2</b>	<b>2</b>	<b>7</b>	<b>4</b>
<b>Injury Crashes</b>	<b>248</b>	<b>162</b>	<b>179</b>	<b>211</b>
<b>Alcohol-Related Fatal Crashes</b>	<b>1</b>	<b>0</b>	<b>4</b>	<b>0</b>
<b>Percent of Alcohol-Related Fatal Crashes to Total Fatal Crashes</b>	<b>50%</b>	<b>0%</b>	<b>57%</b>	<b>0%</b>
<b>Alcohol-Related Injury Crashes</b>	<b>7</b>	<b>8</b>	<b>17</b>	<b>11</b>
<b>Percent of Alcohol-Related Injury Crashes to Total Injury Crashes</b>	<b>3%</b>	<b>5%</b>	<b>9%</b>	<b>5%</b>

# Virginia House District 6 Speed Crash Statistics

Report Generated May, 2023

	Count	Highest Time Period(s)	Highest Day(s)	Highest Month(s)
<b>Fatal Crashes</b>	<b>2</b>	<b>3:00pm - 5:59pm</b>	<b>Friday • Wednesday</b>	<b>March • November</b>
<b>Resulting Fatalities</b>	<b>2</b>	<b>9:00am - 11:59am</b> (100%)	<b>(100%)</b>	<b>(100%)</b>
<b>Serious Injury Crashes</b>	<b>9</b>	<b>3:00pm - 5:59pm</b> (33%)	<b>Friday • Monday</b> (44%)	<b>April</b> (22%)



## House District 6 Speed-Related Crashes

Interstate Crashes      Non-interstate Crashes  
 ● Fatal                      ● Fatal  
 ⊕ Serious Injury            ⊕ Serious Injury

The blue gradient represents the density of all speed-related crashes.

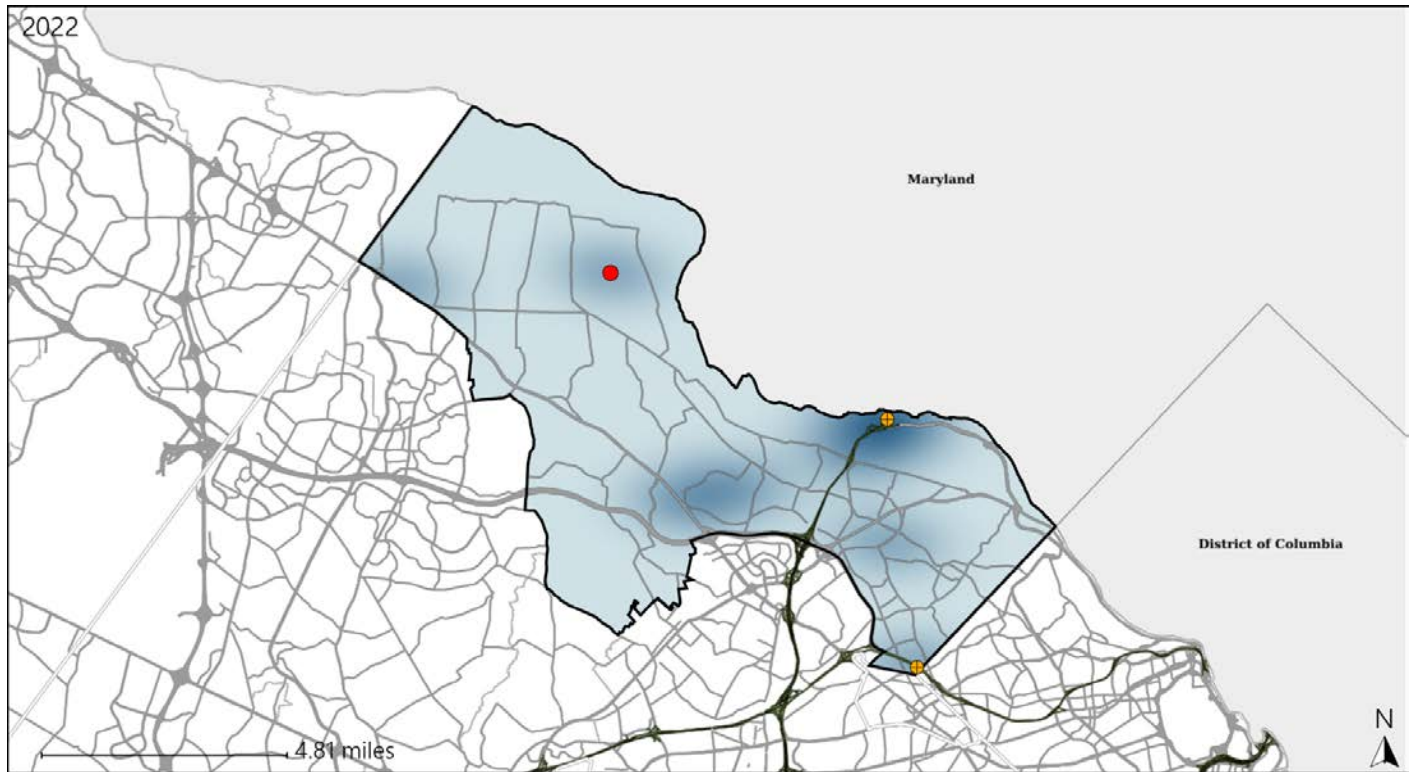


Available Crash Data - Calendar Year (CY)	CY 2019	CY 2020	CY 2021	CY 2022
Total Crashes	1007	593	726	887
Fatal Crashes	2	2	7	4
Injury Crashes	248	162	179	211
Speed-Related Fatal Crashes	1	2	4	2
Percent of Speed-Related Fatal Crashes to Total Fatal Crashes	50%	100%	57%	50%
Speed-Related Injury Crashes	71	51	67	66
Percent of Speed-Related Injury Crashes to Total Injury Crashes	29%	31%	37%	31%

# Virginia House District 6 Unrestrained Crash Statistics

Report Generated May, 2023

	Count	Highest Time Period(s)	Highest Day(s)	Highest Month(s)
<b>Fatal Crashes</b>	<b>1</b>	<b>9:00am - 11:59am</b>	<b>Friday</b>	<b>November</b>
<b>Unrestrained Fatalities</b>	<b>1</b>	<b>(100%)</b>	<b>(100%)</b>	<b>(100%)</b>
<b>Serious Injury Crashes</b>	<b>2</b>	<b>6:00pm - 8:59pm Midnight - 2:59am</b>	<b>Friday • Thursday</b>	<b>July</b>
		<b>(100%)</b>	<b>(100%)</b>	<b>(100%)</b>



### House District 6 Unrestrained-Related Crashes

- |  |  |
|--|--|
| Interstate Crashes                                   | Non-interstate Crashes                               |
| <span style="color: red;">●</span> Fatal             | <span style="color: red;">●</span> Fatal             |
| <span style="color: orange;">⊕</span> Serious Injury | <span style="color: orange;">●</span> Serious Injury |

The blue gradient represents the density of all unrestrained-related crashes.

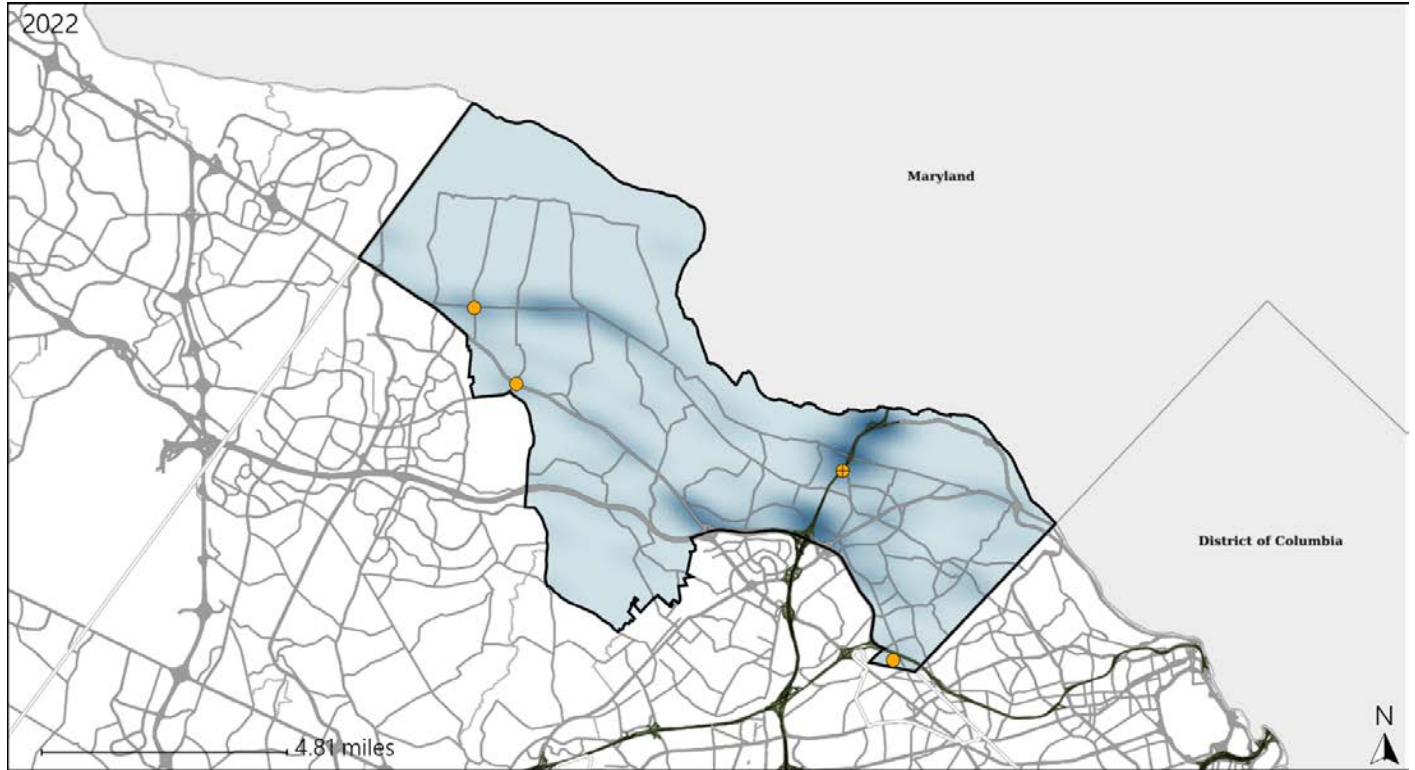


Available Crash Data - Calendar Year (CY)	CY 2019	CY 2020	CY 2021	CY 2022
<b>Total Crashes</b>	<b>1007</b>	<b>593</b>	<b>726</b>	<b>887</b>
<b>Fatalities</b>	<b>3</b>	<b>2</b>	<b>7</b>	<b>5</b>
<b>Injuries</b>	<b>395</b>	<b>240</b>	<b>288</b>	<b>332</b>
<b>Unrestrained Fatalities</b>	<b>1</b>	<b>1</b>	<b>3</b>	<b>1</b>
<b>Percent of Unrestrained Fatalities to Total Fatalities</b>	<b>33%</b>	<b>50%</b>	<b>43%</b>	<b>20%</b>
<b>Unrestrained Injuries</b>	<b>4</b>	<b>4</b>	<b>9</b>	<b>10</b>
<b>Percent of Unrestrained Injuries to Total Injuries</b>	<b>1%</b>	<b>2%</b>	<b>3%</b>	<b>3%</b>

# Virginia House District 6 Distracted Driving Crash Statistics

Report Generated May, 2023

	Count	Highest Time Period(s)	Highest Day(s)	Highest Month(s)
<b>Fatal Crashes</b>	<b>0</b>	-	-	-
<b>Resulting Fatalities</b>	<b>0</b>	-	-	-
<b>Serious Injury Crashes</b>	<b>4</b>	<b>6:00pm - 8:59pm</b> (50%)	<b>Friday</b> (50%)	<b>August • December</b> (50%)



## House District 6 Distracted Driving-Related Crashes

- |                    |                        |
|--------------------|------------------------|
| Interstate Crashes | Non-interstate Crashes |
| Fatal              | Fatal                  |
| Serious Injury     | Serious Injury         |

The blue gradient represents the density of all distracted driving-related crashes.



Available Crash Data - Calendar Year (CY)	CY 2019	CY 2020	CY 2021	CY 2022
<b>Total Crashes</b>	<b>1007</b>	<b>593</b>	<b>726</b>	<b>887</b>
<b>Fatal Crashes</b>	<b>2</b>	<b>2</b>	<b>7</b>	<b>4</b>
<b>Injury Crashes</b>	<b>248</b>	<b>162</b>	<b>179</b>	<b>211</b>
<b>Distracted Driving-Related Fatal Crashes</b>	<b>0</b>	<b>1</b>	<b>0</b>	<b>0</b>
<b>Percent of Distracted Driving-Related Fatal Crashes to Total Fatal Crashes</b>	<b>0%</b>	<b>50%</b>	<b>0%</b>	<b>0%</b>
<b>Distracted Driving-Related Injury Crashes</b>	<b>48</b>	<b>21</b>	<b>27</b>	<b>46</b>
<b>Percent of Distracted Driving-Related Injury Crashes to Total Injury Crashes</b>	<b>19%</b>	<b>13%</b>	<b>15%</b>	<b>22%</b>