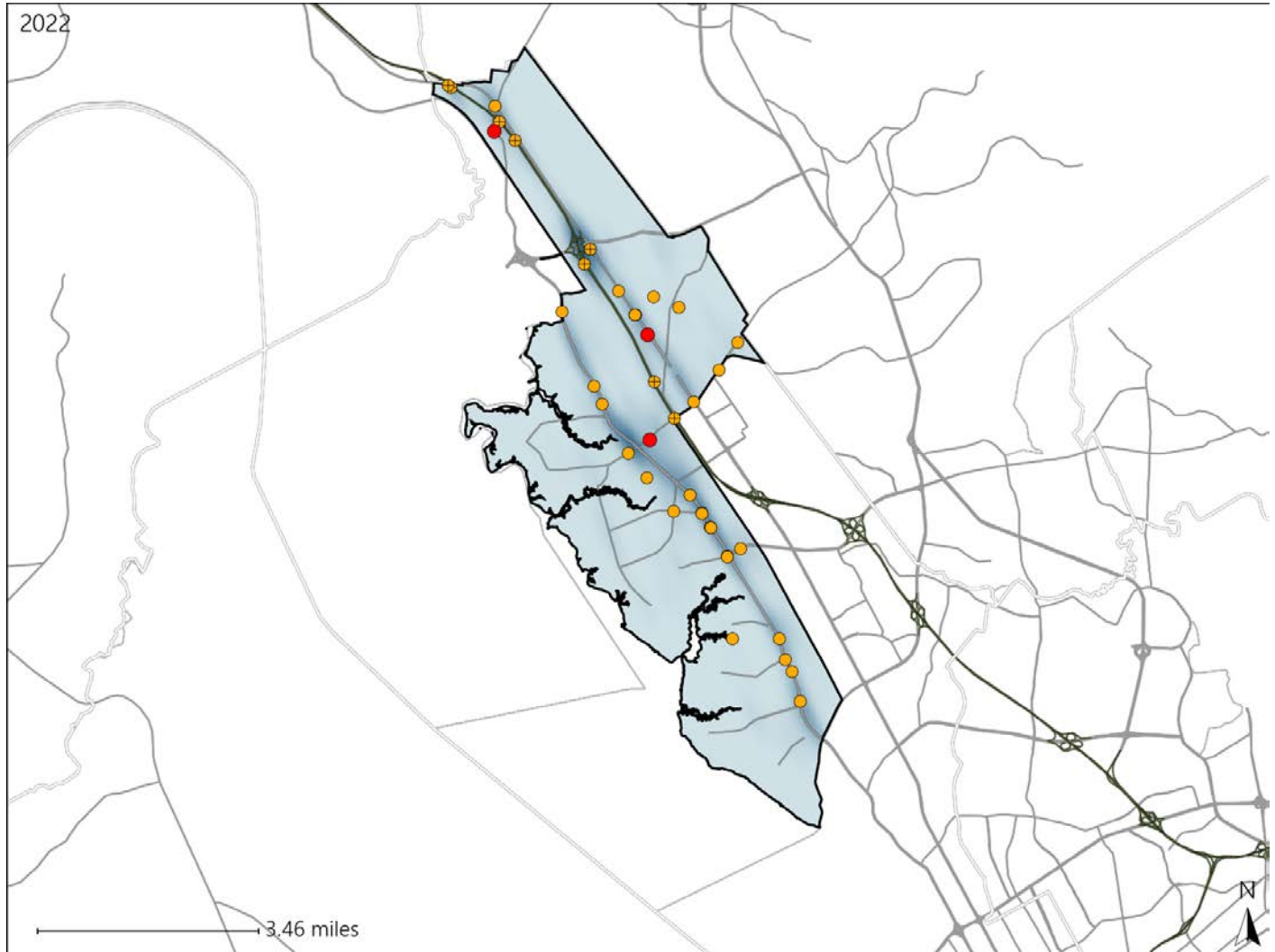


Virginia House District 70 Crash Statistics

Report Generated May, 2023

	Count	Highest Time Period(s)	Highest Day(s)	Highest Month(s)
Fatal Crashes	3	3:00pm - 5:59pm	Friday • Saturday	February • June
Resulting Fatalities	4	9:00am - 11:59am (66%)	(66%)	(66%)
Serious Injury Crashes	39	6:00pm - 8:59pm (28%)	Friday • Thursday (42%)	July (18%)



House District 70 Crashes

Interstate Crashes

- Fatal
- Serious Injury

Non-interstate Crashes

- Fatal
- Serious Injury

The blue gradient represents the density of all crashes.

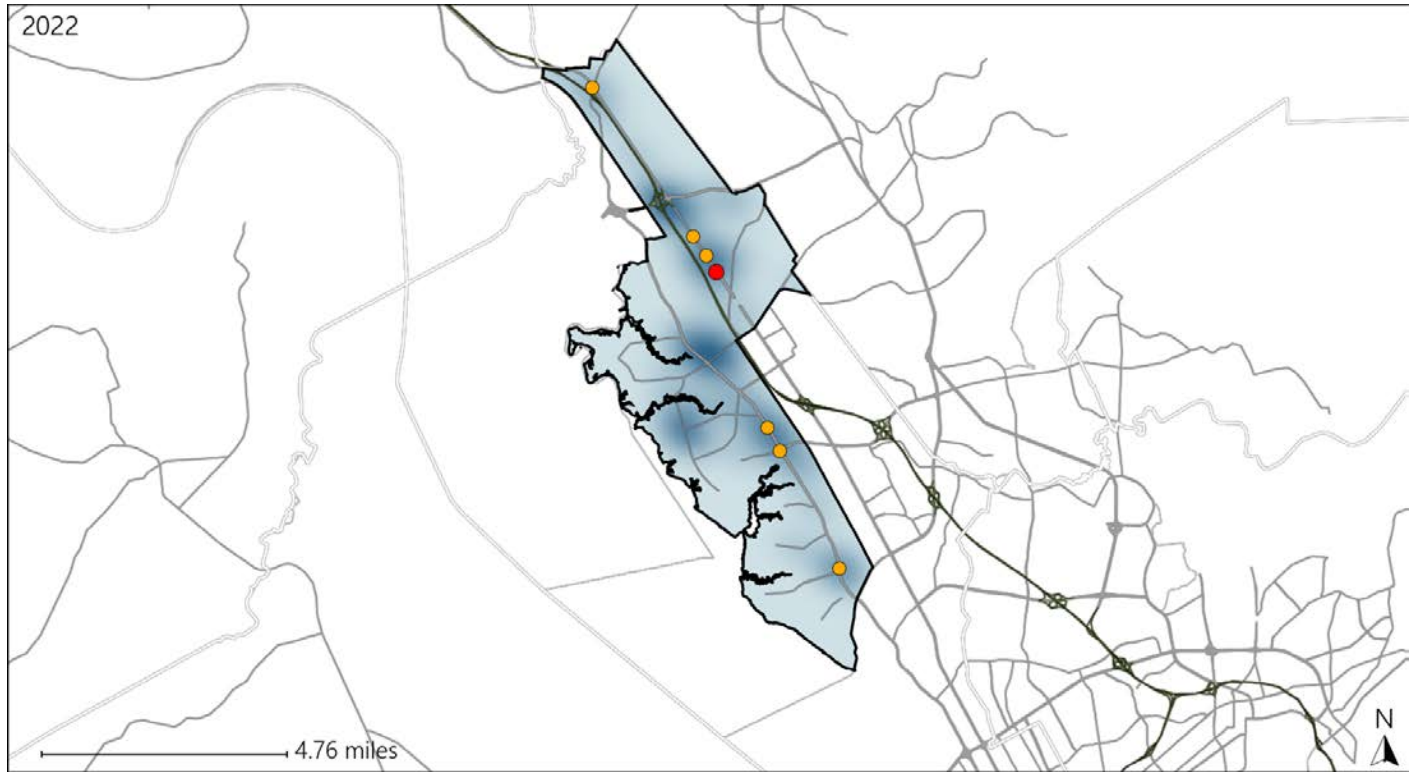


Available Crash Data - Calendar Year (CY)	CY 2019	CY 2020	CY 2021	CY 2022
Total Crashes	982	846	910	863
Fatal Crashes	3	5	7	3
Injury Crashes	425	380	368	265

Virginia House District 70 Alcohol Crash Statistics

Report Generated May, 2023

	Count	Highest Time Period(s)	Highest Day(s)	Highest Month(s)
Fatal Crashes	1	Noon - 2:59pm	Thursday	February
Resulting Fatalities	1	(100%)	(100%)	(100%)
Serious Injury Crashes	6	9:00pm - 11:59pm	Friday	November
		(50%)	(33%)	(33%)



House District 70 Alcohol-Related Crashes

Interstate Crashes

Non-interstate Crashes

- Fatal
- Serious Injury

- Fatal
- Serious Injury

The blue gradient represents the density of all alcohol-related crashes.

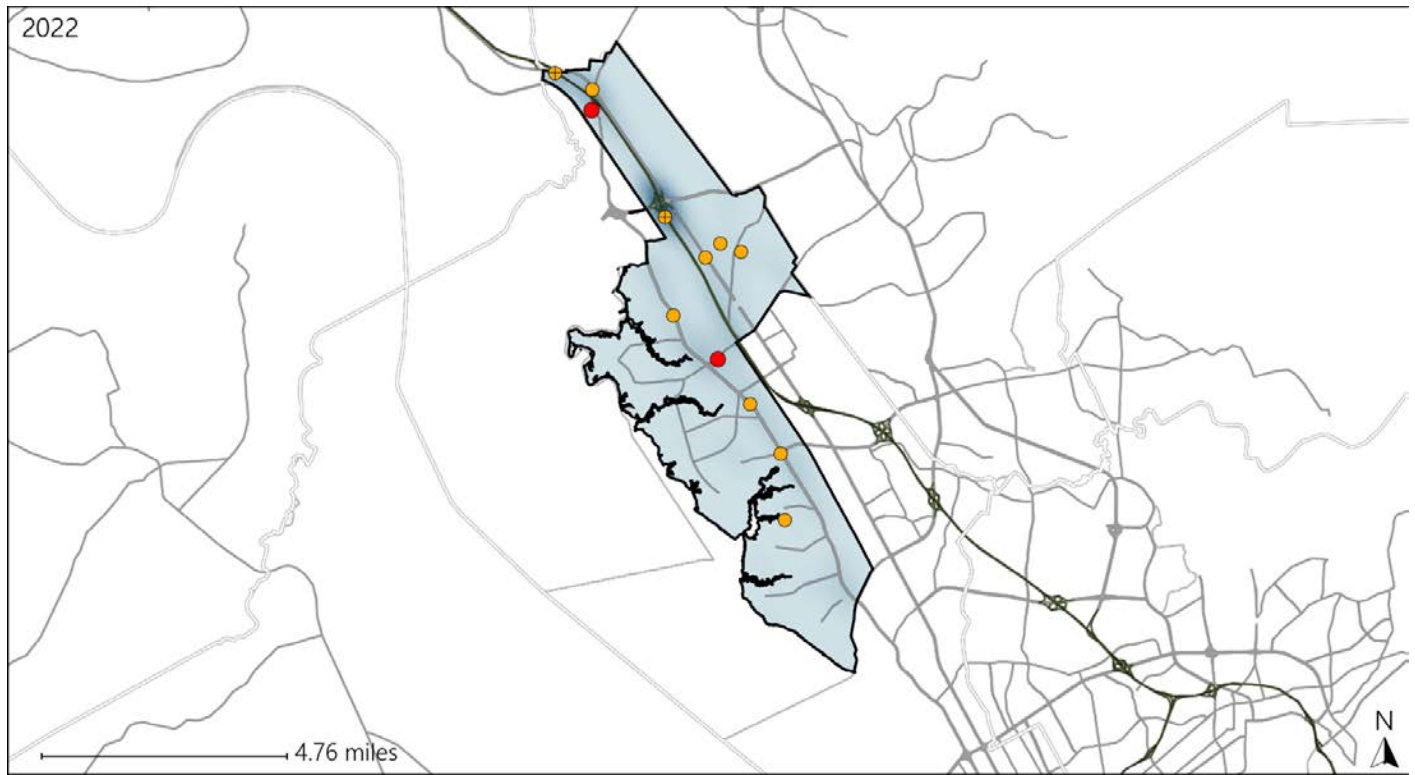


Available Crash Data - Calendar Year (CY)	CY 2019	CY 2020	CY 2021	CY 2022
Total Crashes	982	846	910	863
Fatal Crashes	3	5	7	3
Injury Crashes	425	380	368	265
Alcohol-Related Fatal Crashes	0	3	3	1
Percent of Alcohol-Related Fatal Crashes to Total Fatal Crashes	0%	60%	43%	33%
Alcohol-Related Injury Crashes	35	30	26	24
Percent of Alcohol-Related Injury Crashes to Total Injury Crashes	8%	8%	7%	9%

Virginia House District 70 Speed Crash Statistics

Report Generated May, 2023

	Count	Highest Time Period(s)	Highest Day(s)	Highest Month(s)
Fatal Crashes	2	3:00pm - 5:59pm	Friday • Saturday	June • March
Resulting Fatalities	3	9:00am - 11:59am (100%)	(100%)	(100%)
Serious Injury Crashes	10	6:00pm - 8:59pm 9:00pm - 11:59pm (60%)	Thursday (30%)	August • July (60%)



House District 70 Speed-Related Crashes

Interstate Crashes Non-interstate Crashes
 ● Fatal ● Fatal
 ⊕ Serious Injury ⊕ Serious Injury

The blue gradient represents the density of all speed-related crashes.

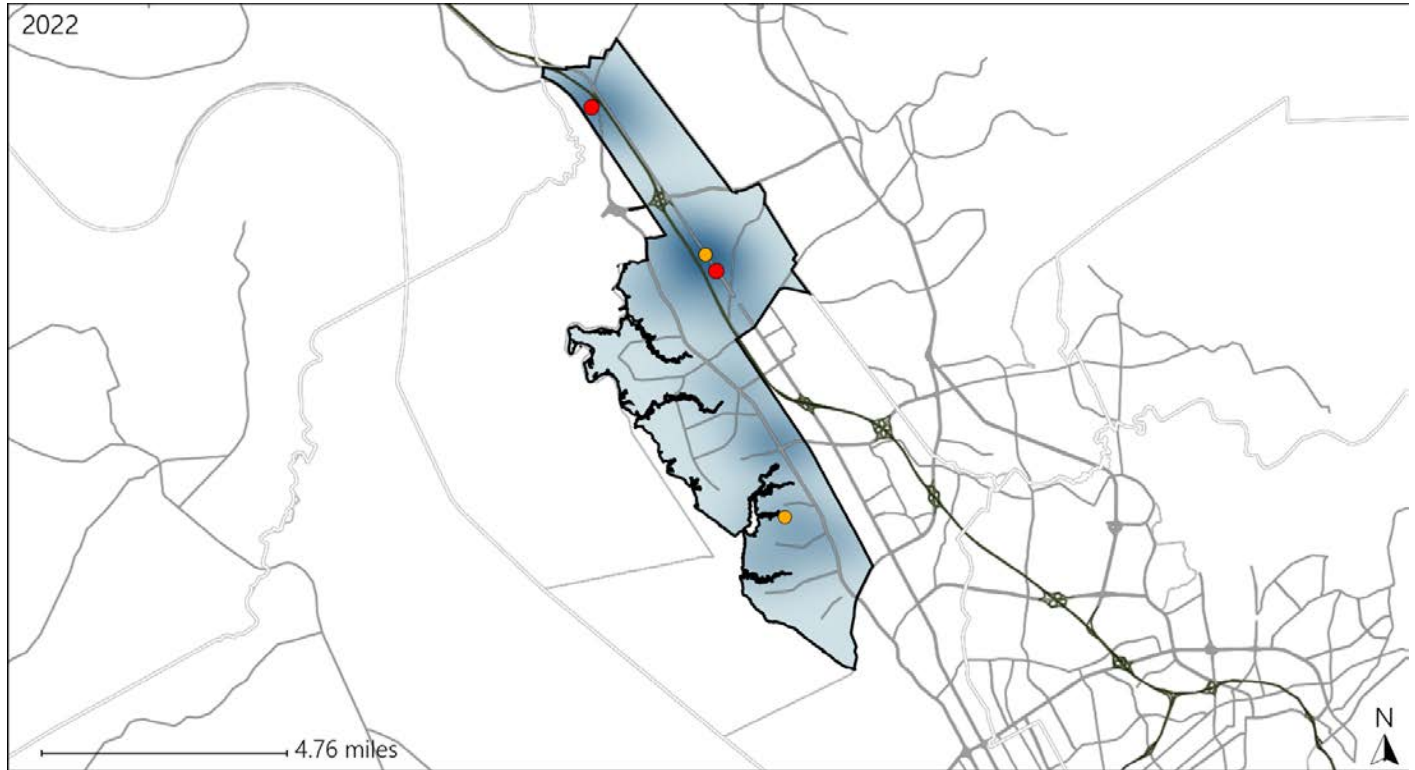


Available Crash Data - Calendar Year (CY)	CY 2019	CY 2020	CY 2021	CY 2022
Total Crashes	982	846	910	863
Fatal Crashes	3	5	7	3
Injury Crashes	425	380	368	265
Speed-Related Fatal Crashes	1	4	1	2
Percent of Speed-Related Fatal Crashes to Total Fatal Crashes	33%	80%	14%	67%
Speed-Related Injury Crashes	70	72	75	51
Percent of Speed-Related Injury Crashes to Total Injury Crashes	16%	19%	20%	19%

Virginia House District 70 Unrestrained Crash Statistics

Report Generated May, 2023

	Count	Highest Time Period(s)	Highest Day(s)	Highest Month(s)
Fatal Crashes	2	9:00am - 11:59am	Friday • Thursday	February • June
Unrestrained Fatalities	2	Noon - 2:59pm (100%)	(100%)	(100%)
Serious Injury Crashes	3	6:00pm - 8:59pm (67%)	Thursday • Tuesday (66%)	August • July (66%)



House District 70 Unrestrained-Related Crashes

Interstate Crashes

- Fatal
- Serious Injury

Non-interstate Crashes

- Fatal
- Serious Injury

The blue gradient represents the density of all unrestrained-related crashes.

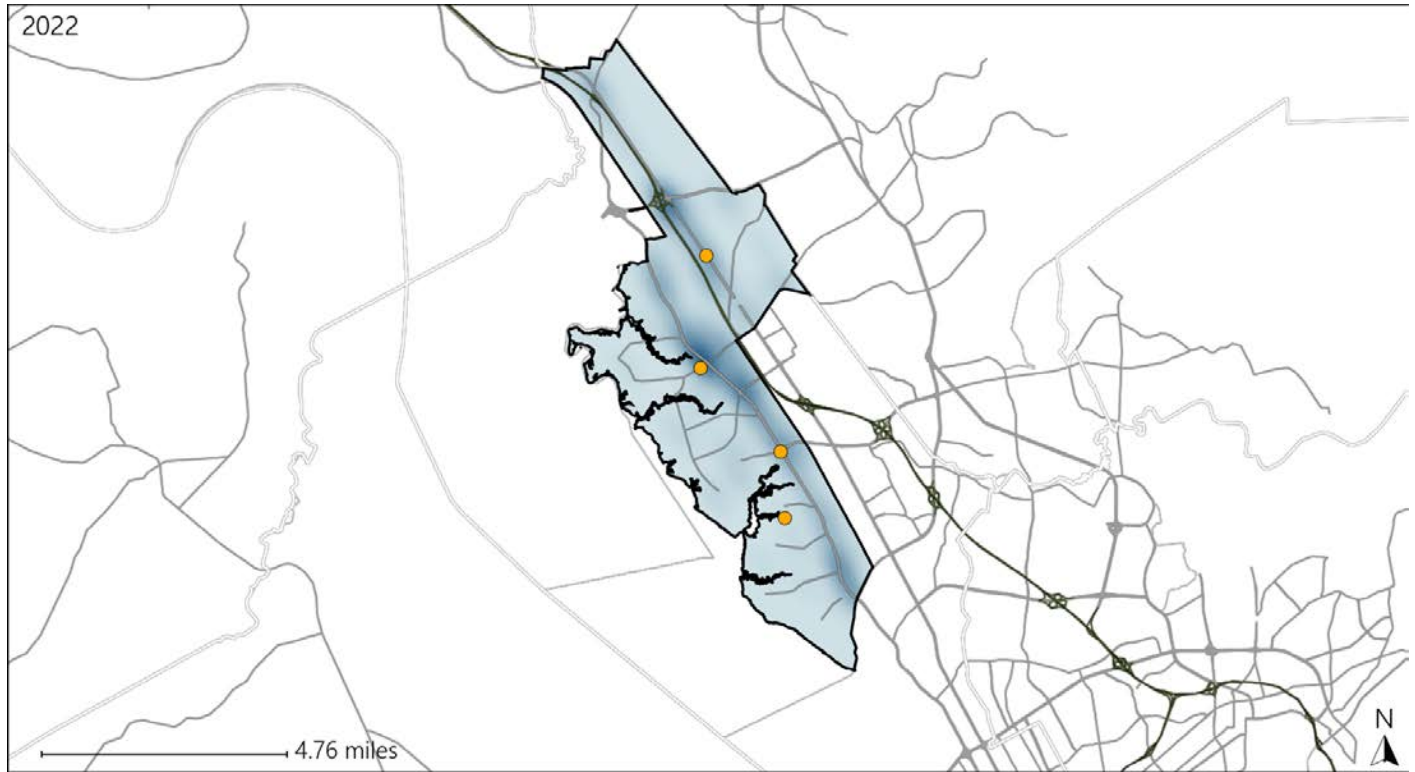


Available Crash Data - Calendar Year (CY)	CY 2019	CY 2020	CY 2021	CY 2022
Total Crashes	982	846	910	863
Fatalities	3	5	7	4
Injuries	667	534	559	419
Unrestrained Fatalities	1	1	2	2
Percent of Unrestrained Fatalities to Total Fatalities	33%	20%	29%	50%
Unrestrained Injuries	30	22	34	14
Percent of Unrestrained Injuries to Total Injuries	4%	4%	6%	3%

Virginia House District 70 Distracted Driving Crash Statistics

Report Generated May, 2023

	Count	Highest Time Period(s)	Highest Day(s)	Highest Month(s)
Fatal Crashes	0	-	-	-
Resulting Fatalities	0	-	-	-
Serious Injury Crashes	4	6:00pm - 8:59pm (50%)	Wednesday (50%)	April - August (50%)



House District 70 Distracted Driving-Related Crashes

- | | |
|--------------------|------------------------|
| Interstate Crashes | Non-interstate Crashes |
| Fatal | Fatal |
| Serious Injury | Serious Injury |

The blue gradient represents the density of all distracted driving-related crashes.



Available Crash Data - Calendar Year (CY)	CY 2019	CY 2020	CY 2021	CY 2022
Total Crashes	982	846	910	863
Fatal Crashes	3	5	7	3
Injury Crashes	425	380	368	265
Distracted Driving-Related Fatal Crashes	0	0	0	0
Percent of Distracted Driving-Related Fatal Crashes to Total Fatal Crashes	0%	0%	0%	0%
Distracted Driving-Related Injury Crashes	100	111	106	52
Percent of Distracted Driving-Related Injury Crashes to Total Injury Crashes	24%	29%	29%	20%