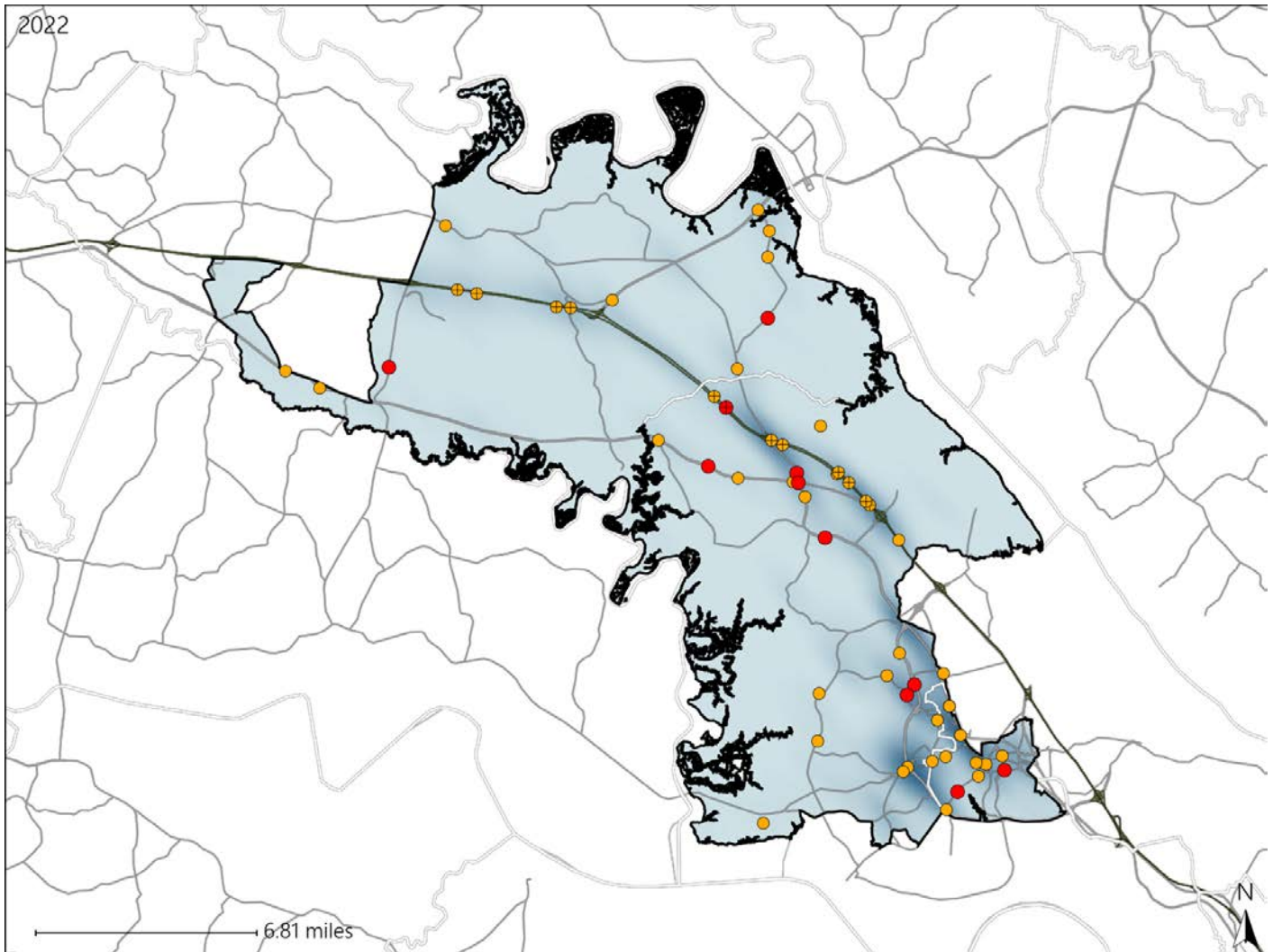


Virginia House District 71 Crash Statistics

Report Generated May, 2023

	Count	Highest Time Period(s)	Highest Day(s)	Highest Month(s)
Fatal Crashes	11	6:00pm - 8:59pm	Friday	October
Resulting Fatalities	12	(36%)	(36%)	(36%)
Serious Injury Crashes	45	3:00pm - 5:59pm 9:00pm - 11:59pm	Saturday	August - July
		(36%)	(22%)	(32%)



House District 71 Crashes

Interstate Crashes

- Fatal
- Serious Injury

Non-interstate Crashes

- Fatal
- Serious Injury

The blue gradient represents the density of all crashes.

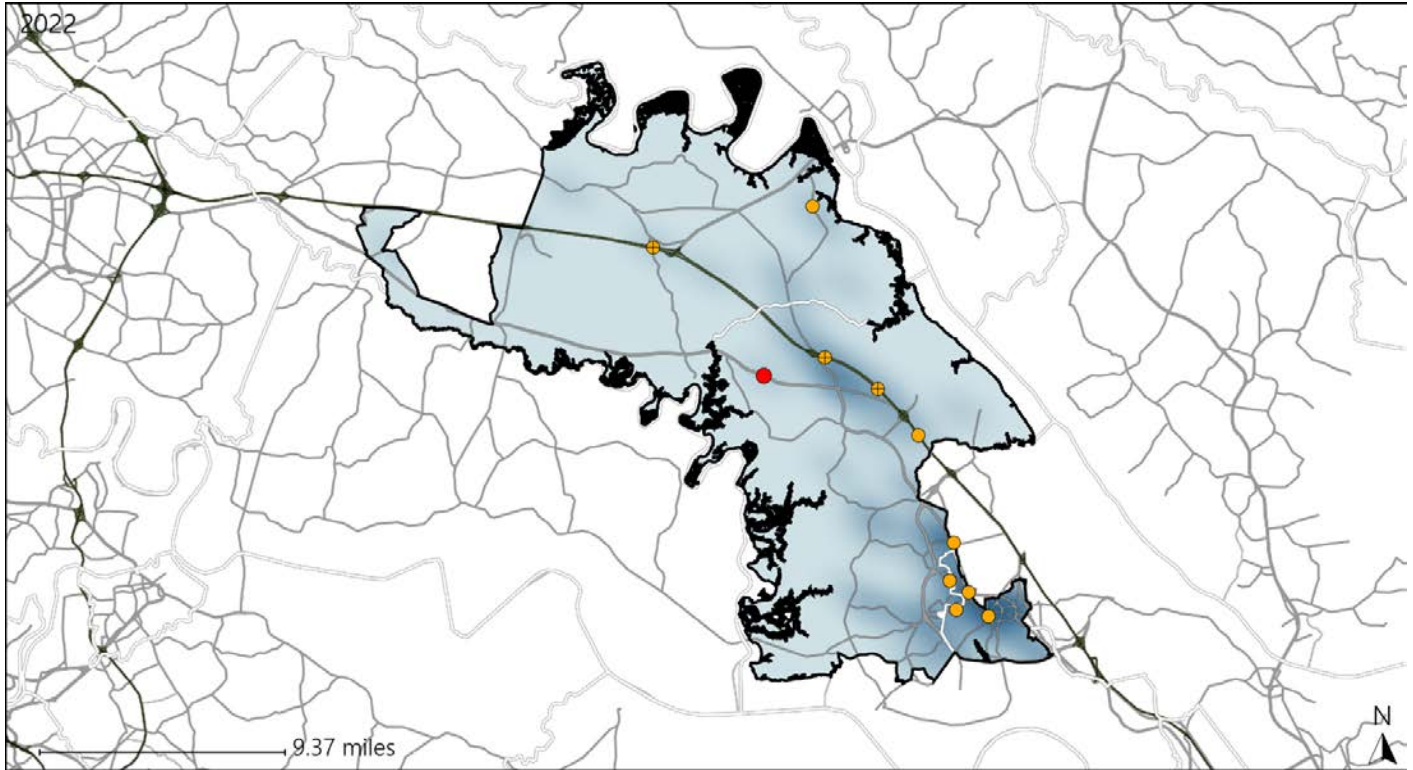


Available Crash Data - Calendar Year (CY)	CY 2019	CY 2020	CY 2021	CY 2022
Total Crashes	1167	915	1032	1012
Fatal Crashes	3	9	17	11
Injury Crashes	535	402	404	388

Virginia House District 71 Alcohol Crash Statistics

Report Generated May, 2023

	Count	Highest Time Period(s)	Highest Day(s)	Highest Month(s)
Fatal Crashes	1	6:00pm - 8:59pm	Sunday	February
Resulting Fatalities	1	(100%)	(100%)	(100%)
Serious Injury Crashes	10	Midnight - 2:59am	Thursday	December + July
		(50%)	(40%)	(40%)



House District 71 Alcohol-Related Crashes

Interstate Crashes Non-interstate Crashes
 ● Fatal ● Fatal
 ⊕ Serious Injury ⊕ Serious Injury

The blue gradient represents the density of all alcohol-related crashes.

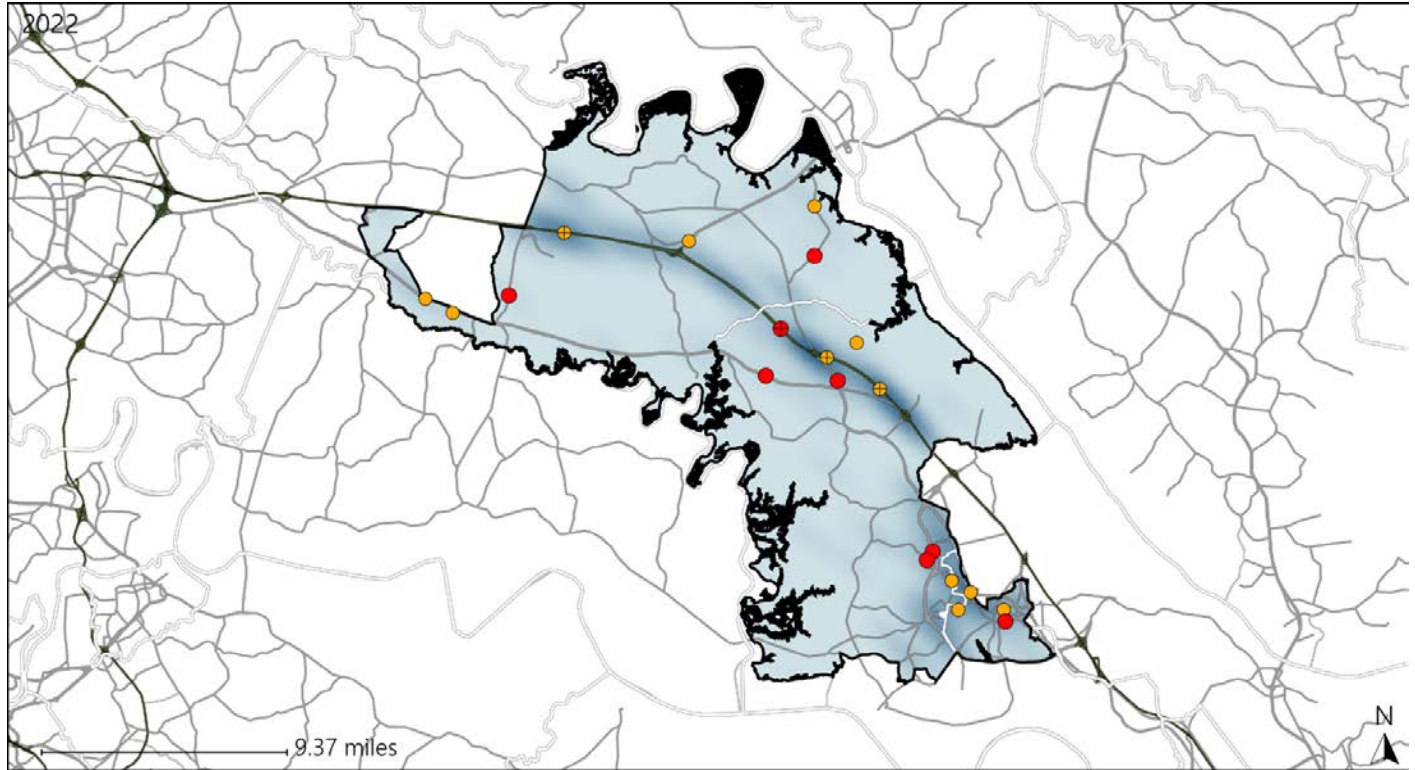


Available Crash Data - Calendar Year (CY)	CY 2019	CY 2020	CY 2021	CY 2022
Total Crashes	1167	915	1032	1012
Fatal Crashes	3	9	17	11
Injury Crashes	535	402	404	388
Alcohol-Related Fatal Crashes	1	1	3	1
Percent of Alcohol-Related Fatal Crashes to Total Fatal Crashes	33%	11%	18%	9%
Alcohol-Related Injury Crashes	41	38	39	33
Percent of Alcohol-Related Injury Crashes to Total Injury Crashes	8%	9%	10%	9%

Virginia House District 71 Speed Crash Statistics

Report Generated May, 2023

	Count	Highest Time Period(s)	Highest Day(s)	Highest Month(s)
Fatal Crashes	8	6:00pm - 8:59pm	Friday	August • February
Resulting Fatalities	9	(38%)	(38%)	(50%)
Serious Injury Crashes	12	Midnight - 2:59am	Thursday	July
		(33%)	(42%)	(33%)



House District 71 Speed-Related Crashes

Interstate Crashes

Non-interstate Crashes

- Fatal
- Serious Injury

- Fatal
- Serious Injury

The blue gradient represents the density of all speed-related crashes.

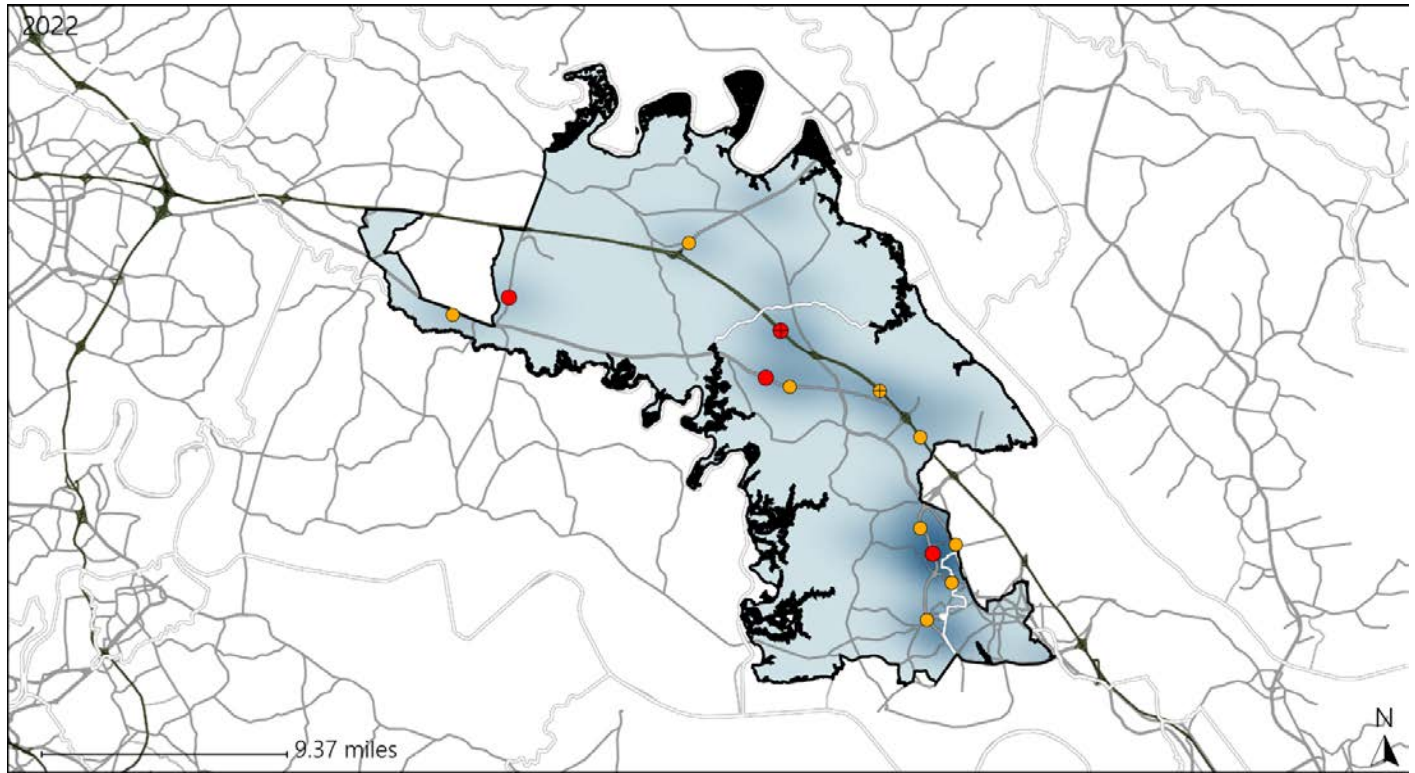


Available Crash Data - Calendar Year (CY)	CY 2019	CY 2020	CY 2021	CY 2022
Total Crashes	1167	915	1032	1012
Fatal Crashes	3	9	17	11
Injury Crashes	535	402	404	388
Speed-Related Fatal Crashes	2	2	6	8
Percent of Speed-Related Fatal Crashes to Total Fatal Crashes	67%	22%	35%	73%
Speed-Related Injury Crashes	95	65	78	71
Percent of Speed-Related Injury Crashes to Total Injury Crashes	18%	16%	19%	18%

Virginia House District 71 Unrestrained Crash Statistics

Report Generated May, 2023

	Count	Highest Time Period(s)	Highest Day(s)	Highest Month(s)
Fatal Crashes	4	6:00am - 8:59am	Wednesday	August
Unrestrained Fatalities	4	6:00pm - 8:59pm (100%)	(50%)	(50%)
Serious Injury Crashes	9	9:00pm - 11:59pm Midnight - 2:59am (66%)	Sunday (44%)	October (33%)



House District 71 Unrestrained-Related Crashes

- | | |
|--------------------|------------------------|
| Interstate Crashes | Non-interstate Crashes |
| ● Fatal | ● Fatal |
| ⊕ Serious Injury | ⊕ Serious Injury |

The blue gradient represents the density of all unrestrained-related crashes.

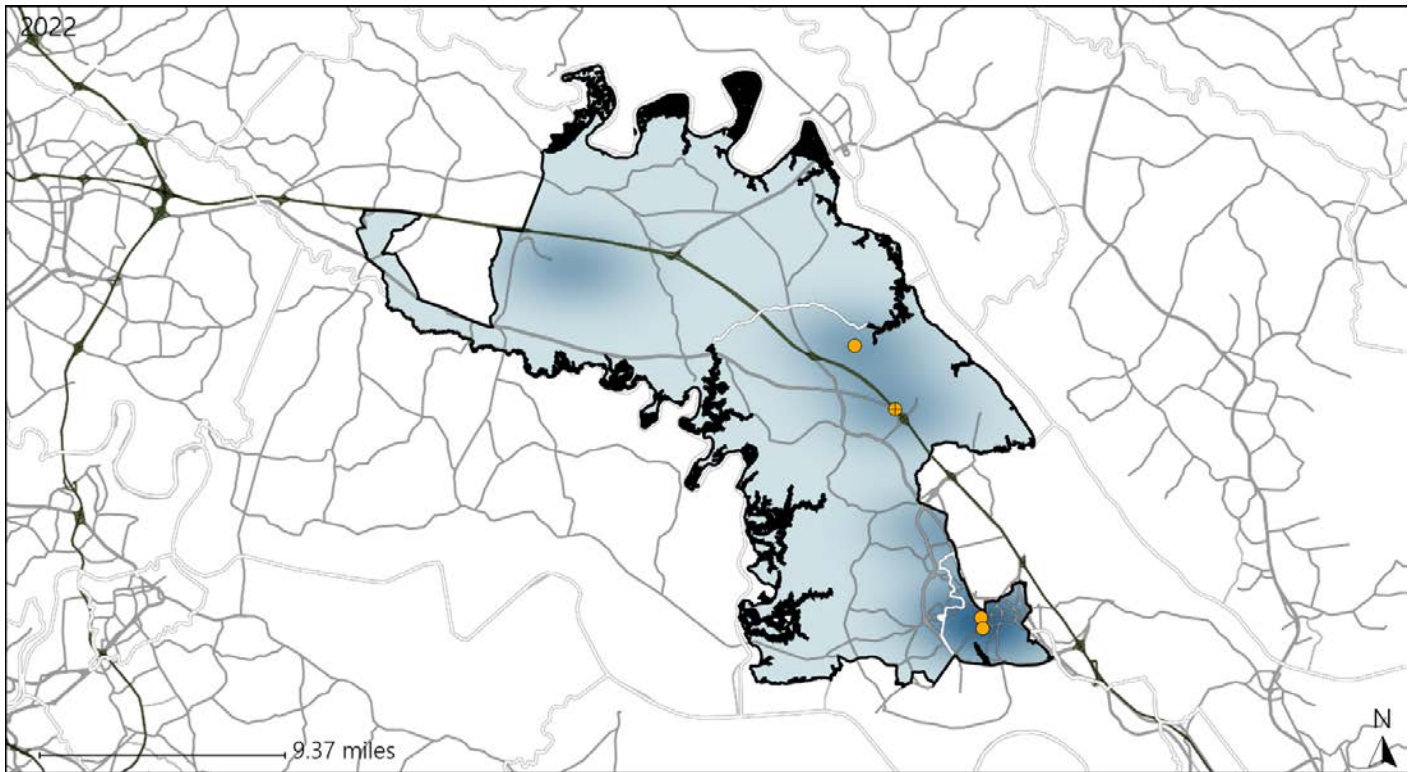


Available Crash Data - Calendar Year (CY)	CY 2019	CY 2020	CY 2021	CY 2022
Total Crashes	1167	915	1032	1012
Fatalities	3	11	21	12
Injuries	850	634	642	601
Unrestrained Fatalities	2	3	7	4
Percent of Unrestrained Fatalities to Total Fatalities	67%	27%	33%	33%
Unrestrained Injuries	37	24	27	29
Percent of Unrestrained Injuries to Total Injuries	4%	4%	4%	5%

Virginia House District 71 Pedestrian Crash Statistics

Report Generated May, 2023

	Count	Highest Time Period(s)	Highest Day(s)	Highest Month(s)
Fatal Crashes	0	-	-	-
Pedestrian Fatalities	0	-	-	-
Serious Injury Crashes	4	3:00pm - 5:59pm 9:00pm - 11:59pm (50%)	Friday • Monday (50%)	April • July (50%)



House District 71 Pedestrian-Related Crashes

- | | |
|--------------------|------------------------|
| Interstate Crashes | Non-interstate Crashes |
| ● Fatal | ● Fatal |
| ⊕ Serious Injury | ● Serious Injury |

The blue gradient represents the density of all pedestrian-related crashes.

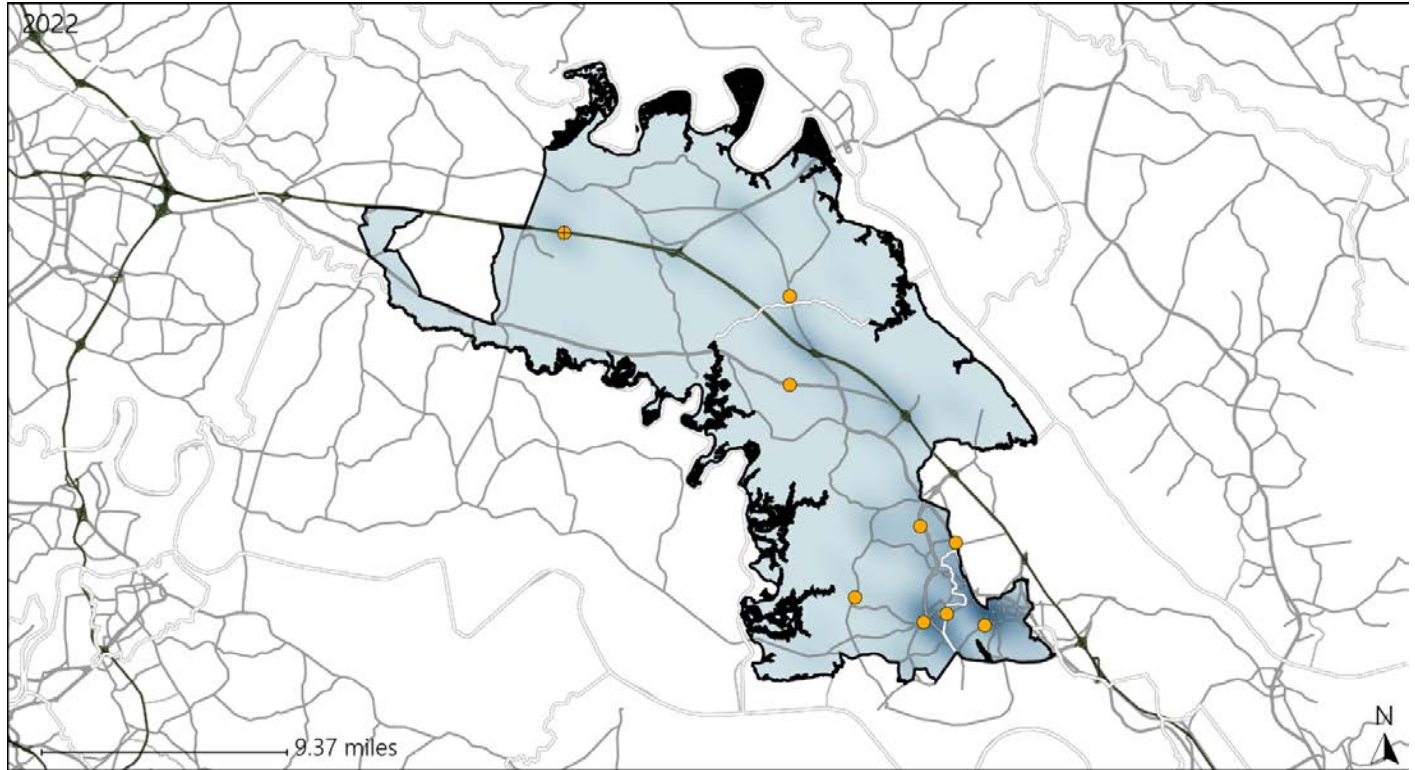


Available Crash Data - Calendar Year (CY)	CY 2019	CY 2020	CY 2021	CY 2022
Total Crashes	1167	915	1032	1012
Fatal Crashes	3	9	17	11
Injury Crashes	535	402	404	388
Pedestrian-Related Fatal Crashes	0	1	2	0
Percent of Pedestrian-Related Fatal Crashes to Total Fatal Crashes	0%	11%	12%	0%
Pedestrian-Related Injury Crashes	13	8	6	6
Percent of Pedestrian-Related Injury Crashes to Total Injury Crashes	2%	2%	1%	2%

Virginia House District 71 Distracted Driving Crash Statistics

Report Generated May, 2023

	Count	Highest Time Period(s)	Highest Day(s)	Highest Month(s)
Fatal Crashes	0	-	-	-
Resulting Fatalities	0	-	-	-
Serious Injury Crashes	9	3:00pm - 5:59pm (44%)	Saturday (33%)	August - June (44%)



House District 71 Distracted Driving-Related Crashes

- | | |
|--|--|
| Interstate Crashes | Non-interstate Crashes |
| ● Fatal | ● Fatal |
| ● Serious Injury | ● Serious Injury |

The blue gradient represents the density of all distracted driving-related crashes.



Available Crash Data - Calendar Year (CY)	CY 2019	CY 2020	CY 2021	CY 2022
Total Crashes	1167	915	1032	1012
Fatal Crashes	3	9	17	11
Injury Crashes	535	402	404	388
Distracted Driving-Related Fatal Crashes	1	2	1	0
Percent of Distracted Driving-Related Fatal Crashes to Total Fatal Crashes	33%	22%	6%	0%
Distracted Driving-Related Injury Crashes	111	76	92	62
Percent of Distracted Driving-Related Injury Crashes to Total Injury Crashes	21%	19%	23%	16%