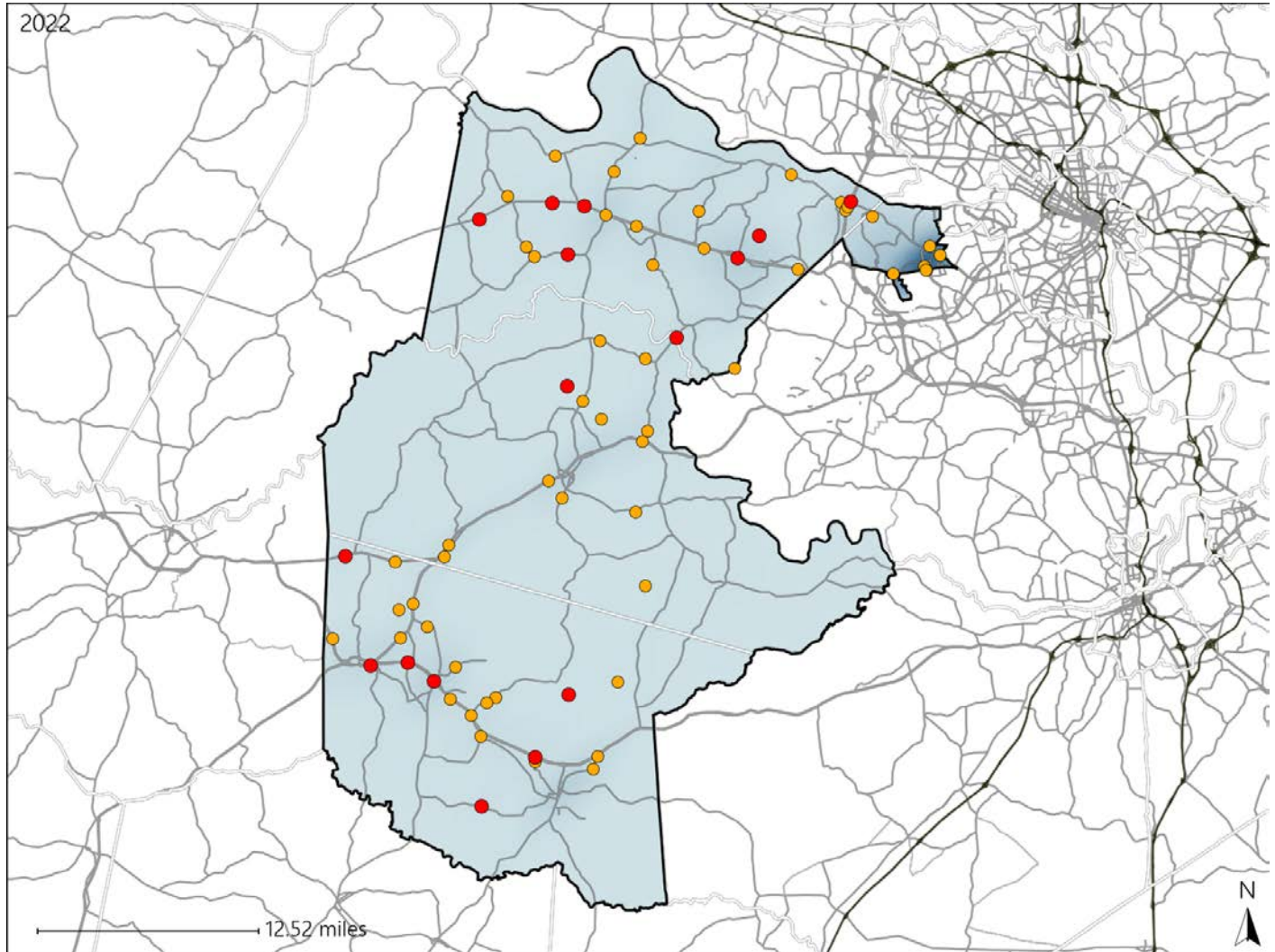


Virginia House District 72 Crash Statistics

Report Generated May, 2023

| | Count | Highest Time Period(s) | Highest Day(s) | Highest Month(s) |
|-------------------------------|-----------|---------------------------|----------------------|------------------|
| Fatal Crashes | 16 | 6:00am - 8:59am | Saturday • Wednesday | November |
| Resulting Fatalities | 20 | 6:00pm - 8:59pm (38%) | (50%) | (25%) |
| Serious Injury Crashes | 52 | 9:00am - 11:59am (21%) | Monday (25%) | April (17%) |



House District 72 Crashes

Interstate Crashes

- Fatal
- Serious Injury

Non-interstate Crashes

- Fatal
- Serious Injury

The blue gradient represents the density of all crashes.

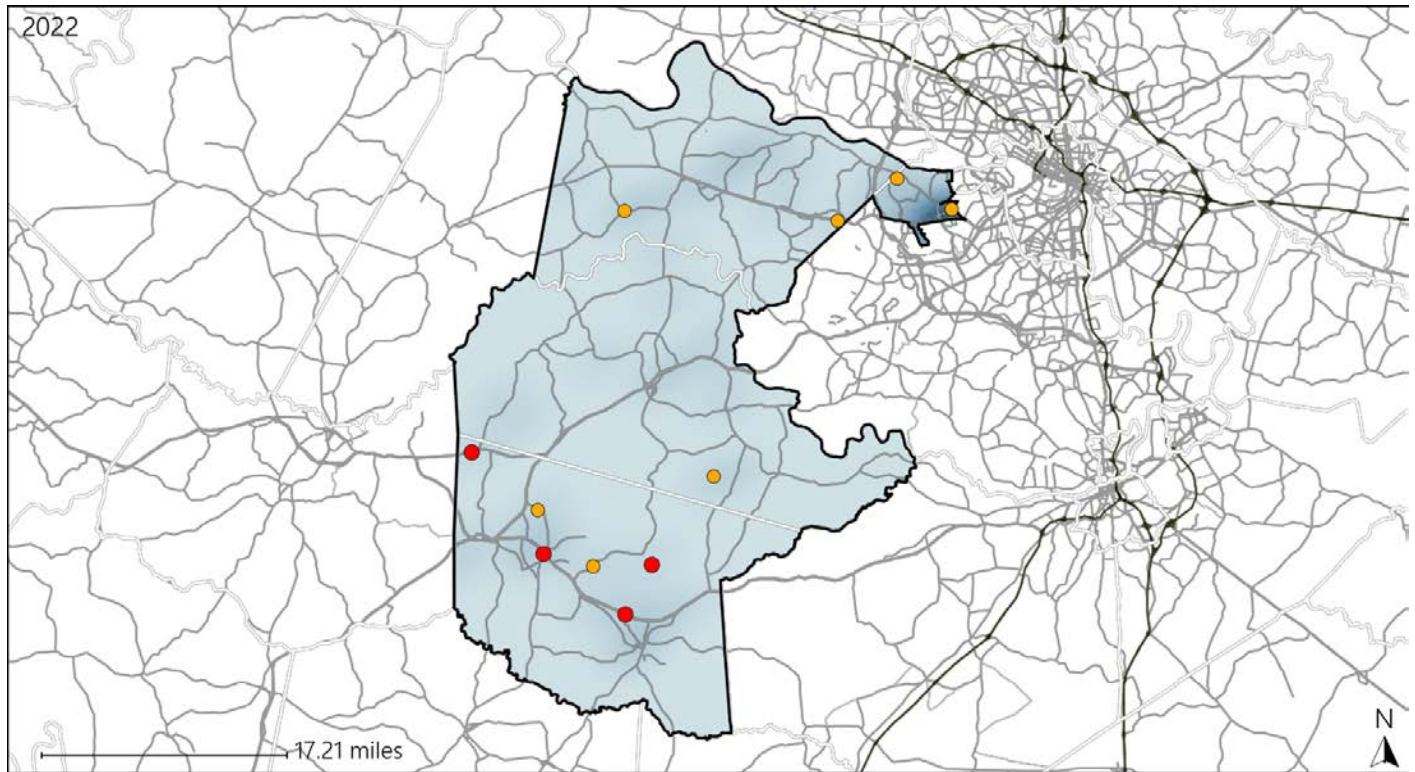


| Available Crash Data - Calendar Year (CY) | CY 2019 | CY 2020 | CY 2021 | CY 2022 |
|---|---------|---------|---------|---------|
| Total Crashes | 1188 | 999 | 1114 | 1101 |
| Fatal Crashes | 13 | 16 | 12 | 16 |
| Injury Crashes | 366 | 284 | 309 | 270 |

Virginia House District 72 Alcohol Crash Statistics

Report Generated May, 2023

| | Count | Highest Time Period(s) | Highest Day(s) | Highest Month(s) |
|-------------------------------|----------|---|--------------------------|------------------|
| Fatal Crashes | 4 | 6:00pm - 8:59pm | Monday • Saturday | September |
| Resulting Fatalities | 6 | (50%) | (50%) | (50%) |
| Serious Injury Crashes | 7 | 6:00pm - 8:59pm 9:00pm - 11:59pm | Monday | August |
| | | (58%) | (43%) | (29%) |



House District 72 Alcohol-Related Crashes

Interstate Crashes Non-interstate Crashes
 ● Fatal ● Fatal
 ⊕ Serious Injury ⊕ Serious Injury

The blue gradient represents the density of all alcohol-related crashes.

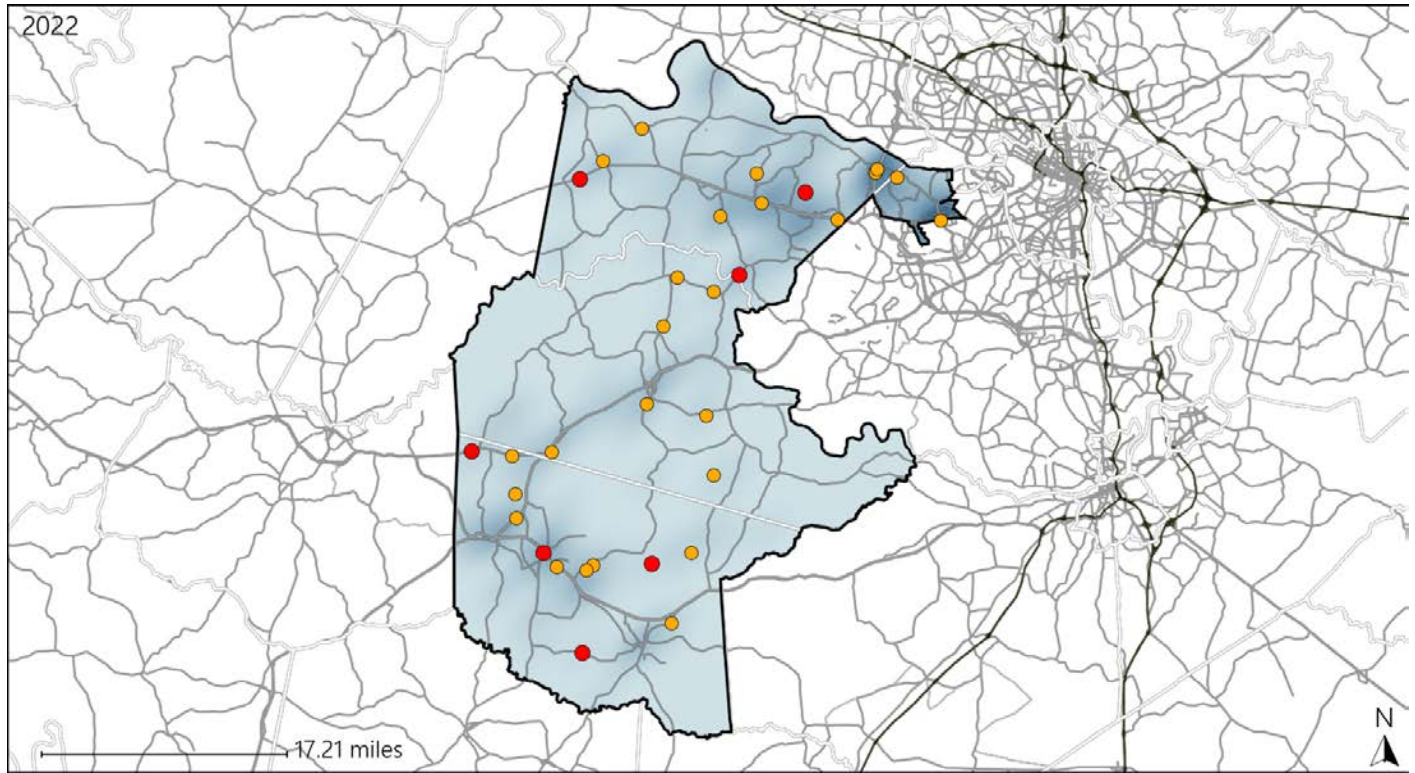


| Available Crash Data - Calendar Year (CY) | CY 2019 | CY 2020 | CY 2021 | CY 2022 |
|---|---------|---------|---------|---------|
| Total Crashes | 1188 | 999 | 1114 | 1101 |
| Fatal Crashes | 13 | 16 | 12 | 16 |
| Injury Crashes | 366 | 284 | 309 | 270 |
| Alcohol-Related Fatal Crashes | 4 | 5 | 4 | 4 |
| Percent of Alcohol-Related Fatal Crashes to Total Fatal Crashes | 31% | 31% | 33% | 25% |
| Alcohol-Related Injury Crashes | 32 | 19 | 21 | 25 |
| Percent of Alcohol-Related Injury Crashes to Total Injury Crashes | 9% | 7% | 7% | 9% |

Virginia House District 72 Speed Crash Statistics

Report Generated May, 2023

| | Count | Highest Time Period(s) | Highest Day(s) | Highest Month(s) |
|-------------------------------|-----------|---------------------------|-------------------|----------------------|
| Fatal Crashes | 7 | 6:00pm - 8:59pm | Saturday • Sunday | November • September |
| Resulting Fatalities | 7 | 9:00am - 11:59am (58%) | (58%) | (58%) |
| Serious Injury Crashes | 25 | 6:00pm - 8:59pm | Monday | April • December |
| | | 9:00am - 11:59am (40%) | (28%) | (32%) |



House District 72 Speed-Related Crashes

Interstate Crashes Non-interstate Crashes
 ● Fatal ● Fatal
 ⊕ Serious Injury ⊕ Serious Injury

The blue gradient represents the density of all speed-related crashes.

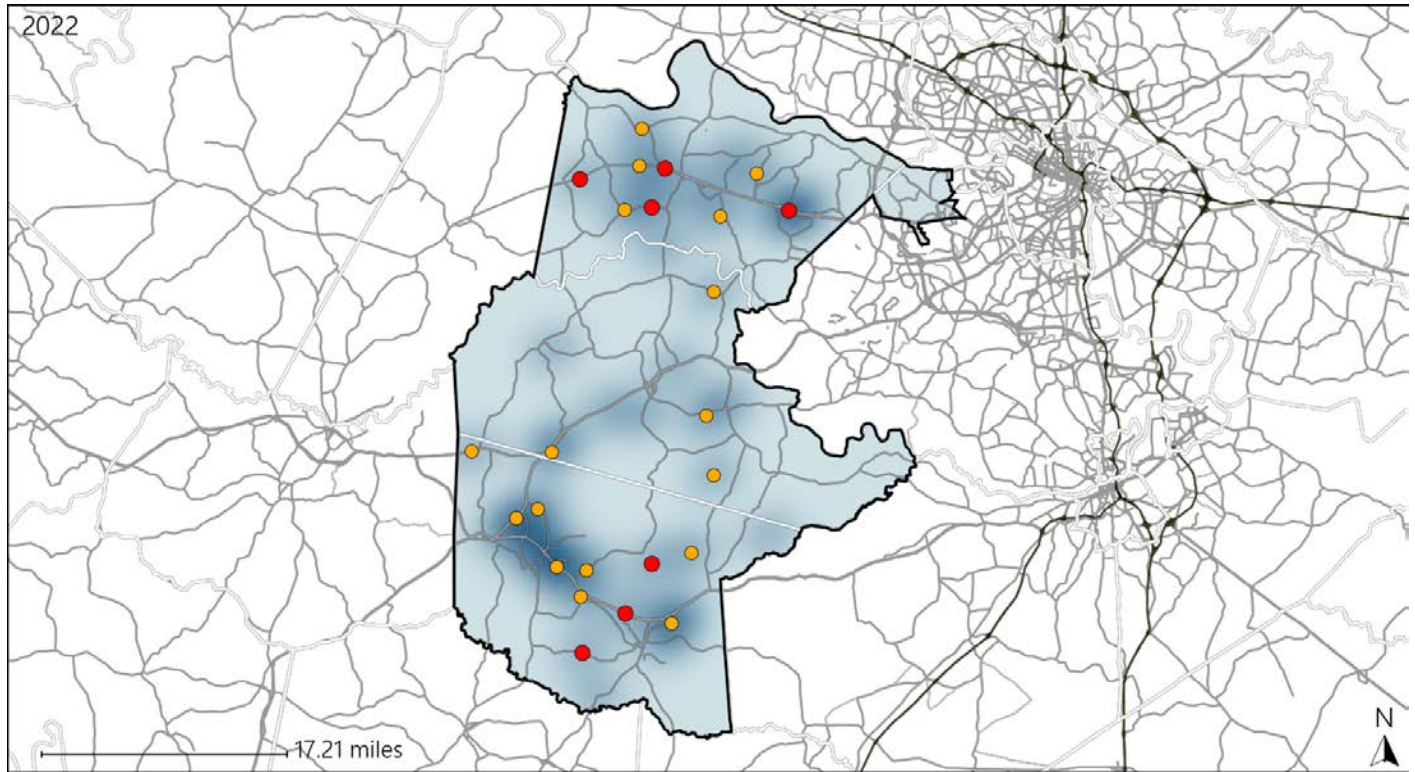


| Available Crash Data - Calendar Year (CY) | CY 2019 | CY 2020 | CY 2021 | CY 2022 |
|---|---------|---------|---------|---------|
| Total Crashes | 1188 | 999 | 1114 | 1101 |
| Fatal Crashes | 13 | 16 | 12 | 16 |
| Injury Crashes | 366 | 284 | 309 | 270 |
| Speed-Related Fatal Crashes | 3 | 9 | 5 | 7 |
| Percent of Speed-Related Fatal Crashes to Total Fatal Crashes | 23% | 56% | 42% | 44% |
| Speed-Related Injury Crashes | 97 | 65 | 87 | 68 |
| Percent of Speed-Related Injury Crashes to Total Injury Crashes | 27% | 23% | 28% | 25% |

Virginia House District 72 Unrestrained Crash Statistics

Report Generated May, 2023

| | Count | Highest Time Period(s) | Highest Day(s) | Highest Month(s) |
|--------------------------------|-----------|------------------------|----------------------------|----------------------------|
| Fatal Crashes | 7 | 6:00am - 8:59am | Saturday | November |
| Unrestrained Fatalities | 10 | (29%) | (43%) | (43%) |
| Serious Injury Crashes | 17 | 6:00pm - 8:59pm | Saturday • Thursday | December • February |
| | | (24%) | (48%) | (36%) |



House District 72 Unrestrained-Related Crashes

Interstate Crashes

- Fatal
- Serious Injury

Non-interstate Crashes

- Fatal
- Serious Injury

The blue gradient represents the density of all unrestrained-related crashes.

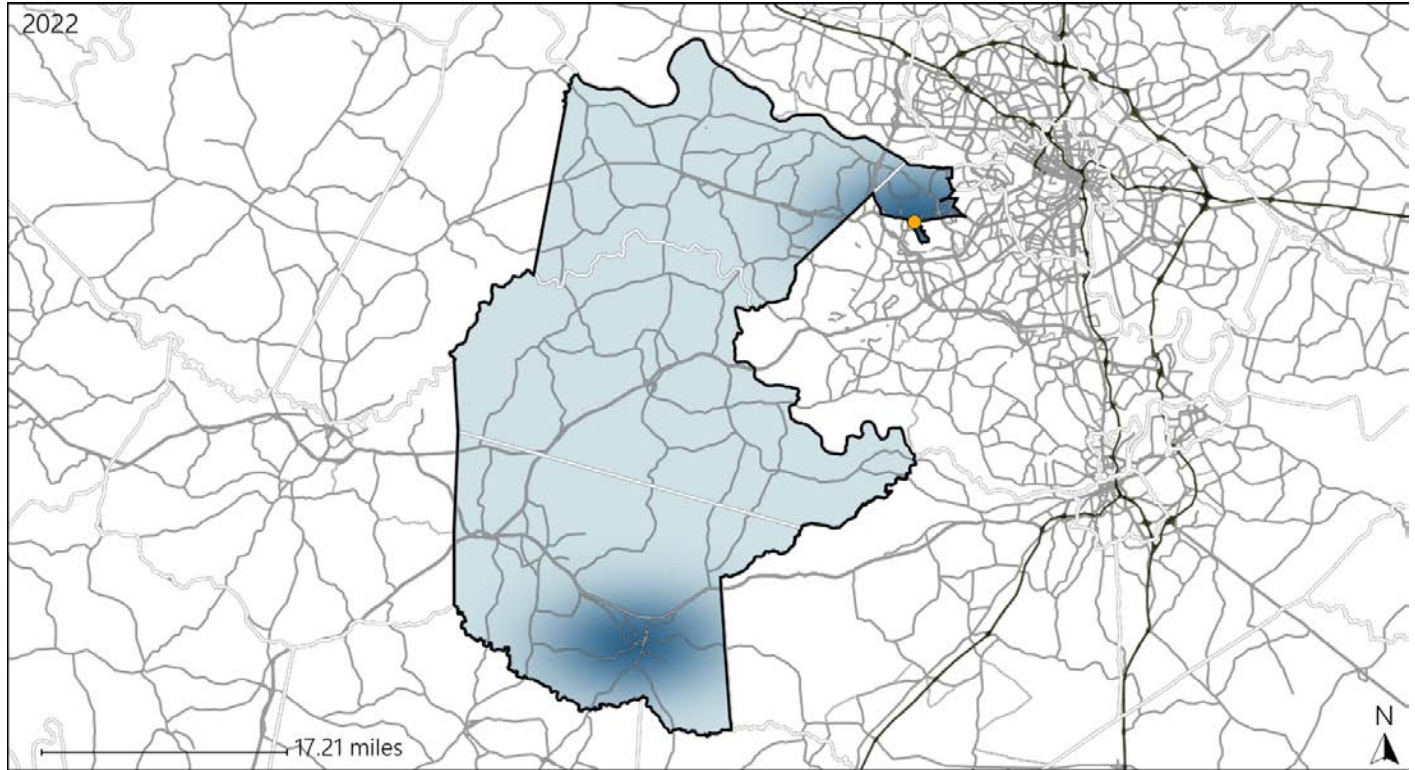


| Available Crash Data - Calendar Year (CY) | CY 2019 | CY 2020 | CY 2021 | CY 2022 |
|---|-------------|------------|-------------|-------------|
| Total Crashes | 1188 | 999 | 1114 | 1101 |
| Fatalities | 14 | 16 | 14 | 20 |
| Injuries | 566 | 430 | 434 | 408 |
| Unrestrained Fatalities | 7 | 8 | 5 | 10 |
| Percent of Unrestrained Fatalities to Total Fatalities | 50% | 50% | 36% | 50% |
| Unrestrained Injuries | 49 | 60 | 55 | 42 |
| Percent of Unrestrained Injuries to Total Injuries | 9% | 14% | 13% | 10% |

Virginia House District 72 Pedestrian Crash Statistics

Report Generated May, 2023

| | Count | Highest Time Period(s) | Highest Day(s) | Highest Month(s) |
|-------------------------------|----------|-----------------------------------|--------------------------|-------------------------|
| Fatal Crashes | 0 | - | - | - |
| Pedestrian Fatalities | 0 | - | - | - |
| Serious Injury Crashes | 1 | 9:00pm - 11:59pm (100%) | Tuesday (100%) | August (100%) |



House District 72 Pedestrian-Related Crashes

- | | |
|--------------------|------------------------|
| Interstate Crashes | Non-interstate Crashes |
| Fatal | Fatal |
| Serious Injury | Serious Injury |

The blue gradient represents the density of all pedestrian-related crashes.

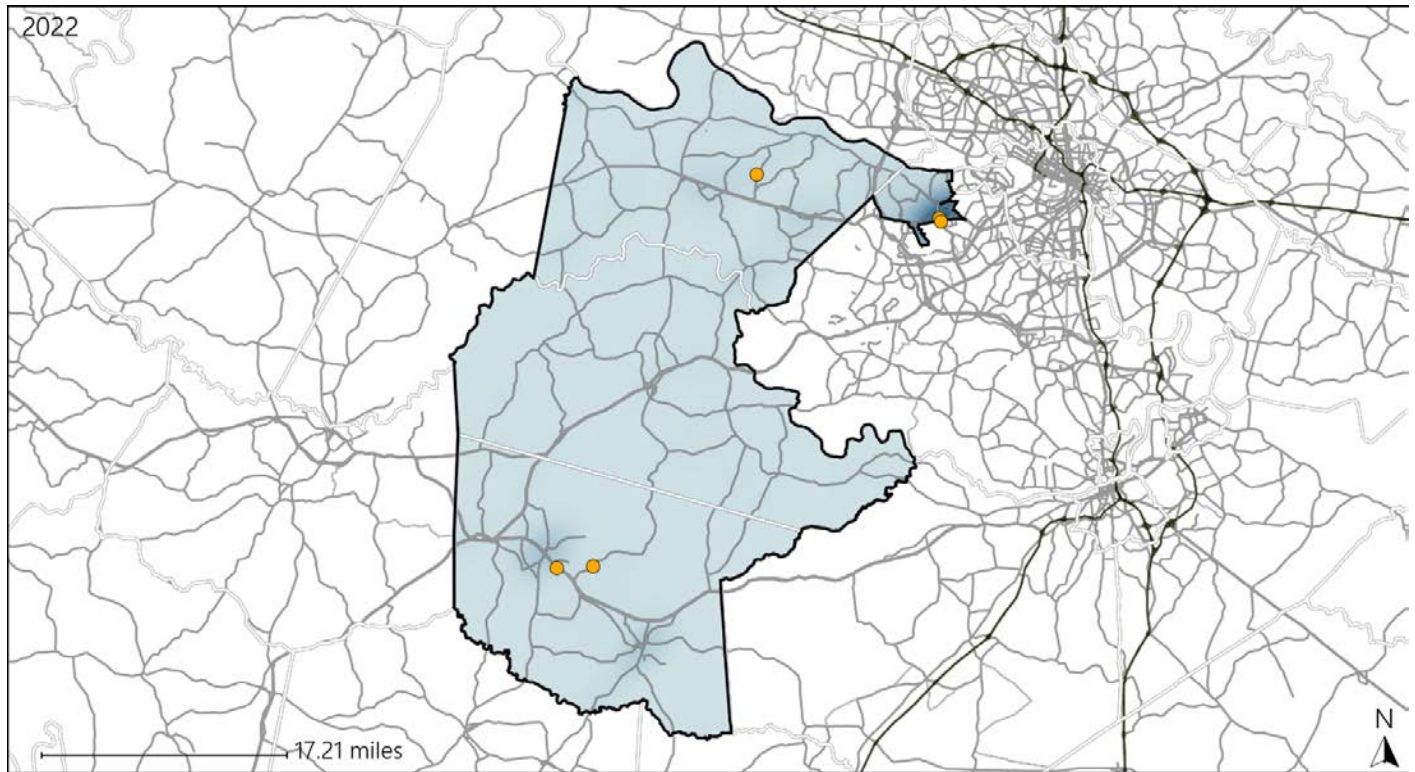


| Available Crash Data - Calendar Year (CY) | CY 2019 | CY 2020 | CY 2021 | CY 2022 |
|--|---------|---------|---------|---------|
| Total Crashes | 1188 | 999 | 1114 | 1101 |
| Fatal Crashes | 13 | 16 | 12 | 16 |
| Injury Crashes | 366 | 284 | 309 | 270 |
| Pedestrian-Related Fatal Crashes | 0 | 2 | 1 | 0 |
| Percent of Pedestrian-Related Fatal Crashes to Total Fatal Crashes | 0% | 13% | 8% | 0% |
| Pedestrian-Related Injury Crashes | 10 | 5 | 2 | 2 |
| Percent of Pedestrian-Related Injury Crashes to Total Injury Crashes | 3% | 2% | 1% | 1% |

Virginia House District 72 Distracted Driving Crash Statistics

Report Generated May, 2023

| | Count | Highest Time Period(s) | Highest Day(s) | Highest Month(s) |
|-------------------------------|----------|--|----------------------------|------------------|
| Fatal Crashes | 0 | - | - | - |
| Resulting Fatalities | 0 | - | - | - |
| Serious Injury Crashes | 5 | 9:00am - 11:59am Noon - 2:59pm (80%) | Monday • Thursday (80%) | October (40%) |



House District 72 Distracted Driving-Related Crashes

- | | |
|--------------------|------------------------|
| Interstate Crashes | Non-interstate Crashes |
| ● Fatal | ● Fatal |
| ⊕ Serious Injury | ● Serious Injury |

The blue gradient represents the density of all distracted driving-related crashes.



| Available Crash Data - Calendar Year (CY) | CY 2019 | CY 2020 | CY 2021 | CY 2022 |
|--|---------|---------|---------|---------|
| Total Crashes | 1188 | 999 | 1114 | 1101 |
| Fatal Crashes | 13 | 16 | 12 | 16 |
| Injury Crashes | 366 | 284 | 309 | 270 |
| Distracted Driving-Related Fatal Crashes | 0 | 1 | 3 | 0 |
| Percent of Distracted Driving-Related Fatal Crashes to Total Fatal Crashes | 0% | 6% | 25% | 0% |
| Distracted Driving-Related Injury Crashes | 59 | 39 | 39 | 33 |
| Percent of Distracted Driving-Related Injury Crashes to Total Injury Crashes | 16% | 14% | 13% | 12% |