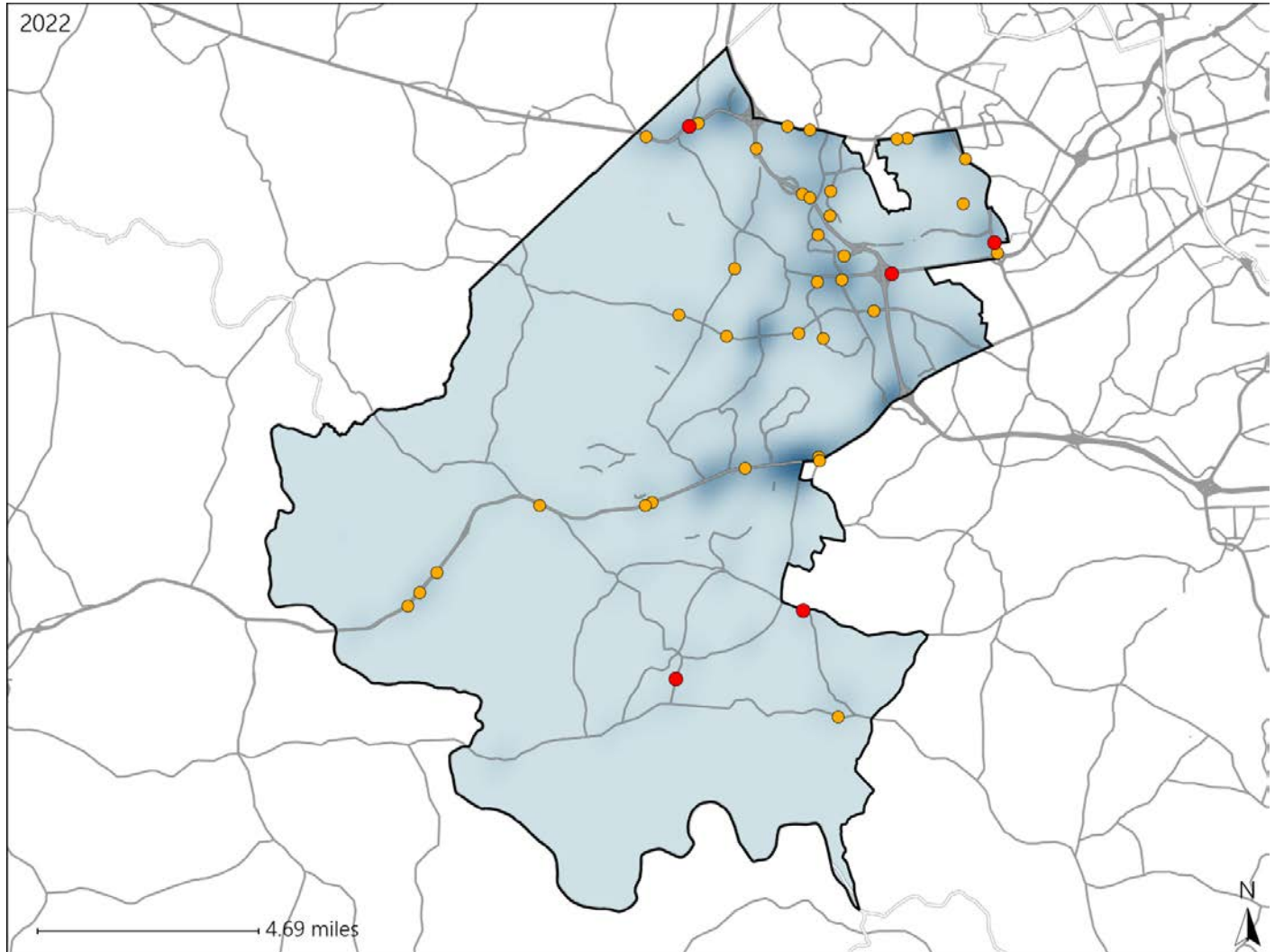


Virginia House District 73 Crash Statistics

Report Generated May, 2023

	Count	Highest Time Period(s)	Highest Day(s)	Highest Month(s)
Fatal Crashes	5	3:00pm - 5:59pm	Monday - Saturday	August
Resulting Fatalities	5	6:00am - 8:59am (80%)	(40%)	(40%)
Serious Injury Crashes	34	3:00pm - 5:59pm (24%)	Saturday (29%)	March (24%)



House District 73 Crashes

Interstate Crashes

- Fatal
- Serious Injury

Non-interstate Crashes

- Fatal
- Serious Injury

The blue gradient represents the density of all crashes.

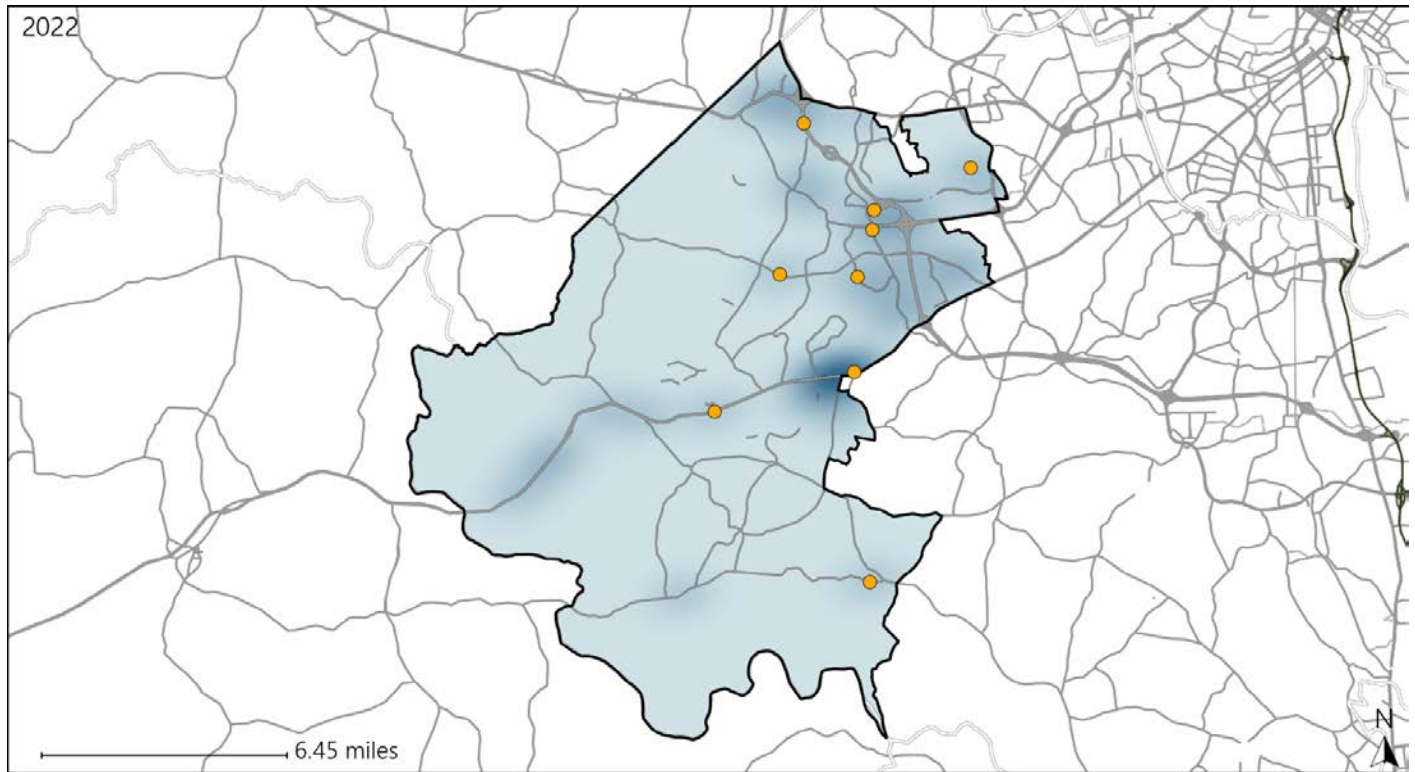


Available Crash Data - Calendar Year (CY)	CY 2019	CY 2020	CY 2021	CY 2022
Total Crashes	958	778	876	940
Fatal Crashes	8	9	4	5
Injury Crashes	224	182	189	215

Virginia House District 73 Alcohol Crash Statistics

Report Generated May, 2023

	Count	Highest Time Period(s)	Highest Day(s)	Highest Month(s)
Fatal Crashes	0	-	-	-
Resulting Fatalities	0	-	-	-
Serious Injury Crashes	9	3:00pm - 5:59pm 9:00pm - 11:59pm (44%)	Saturday (33%)	March (33%)



House District 73 Alcohol-Related Crashes

Interstate Crashes Non-interstate Crashes
 ● Fatal ● Fatal
 ⊕ Serious Injury ⊕ Serious Injury

The blue gradient represents the density of all alcohol-related crashes.

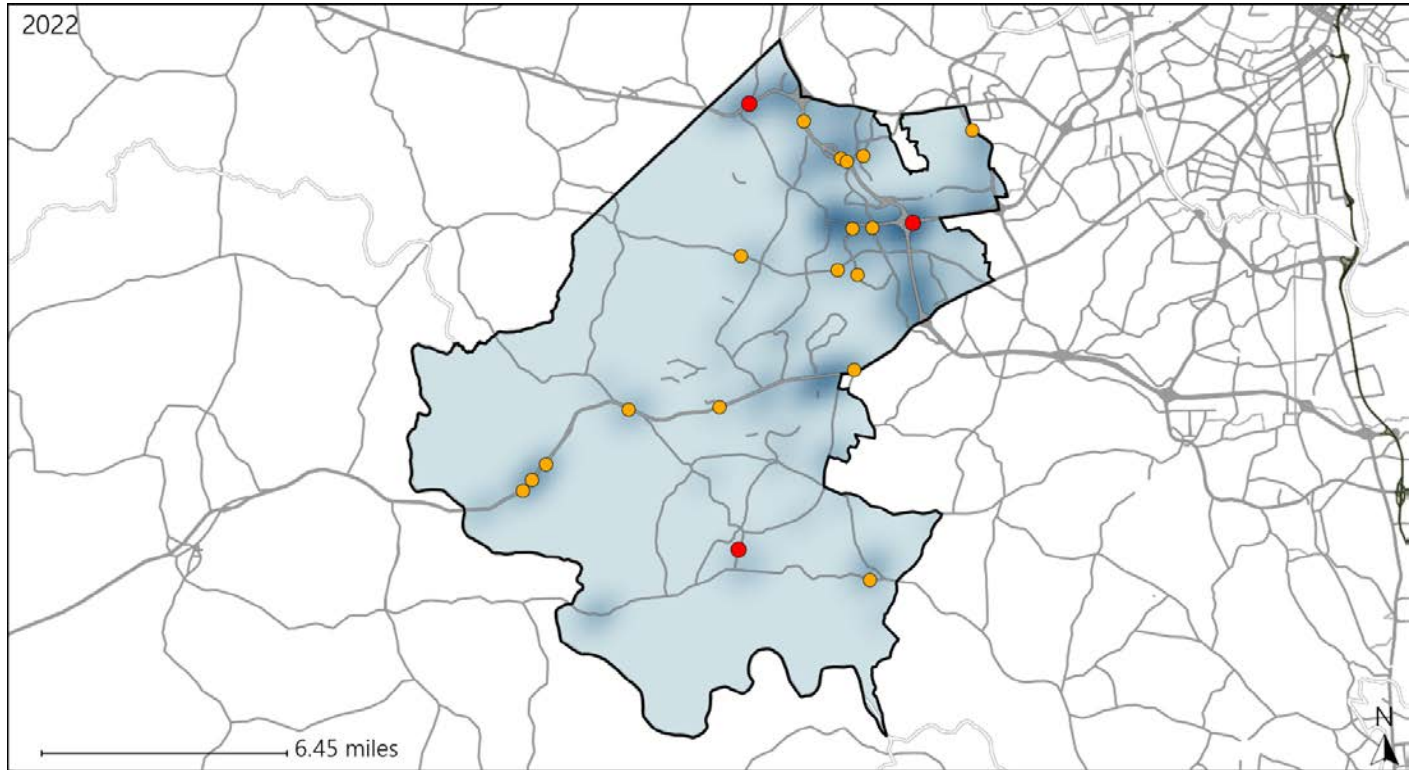


Available Crash Data - Calendar Year (CY)	CY 2019	CY 2020	CY 2021	CY 2022
Total Crashes	958	778	876	940
Fatal Crashes	8	9	4	5
Injury Crashes	224	182	189	215
Alcohol-Related Fatal Crashes	2	2	2	0
Percent of Alcohol-Related Fatal Crashes to Total Fatal Crashes	25%	22%	50%	0%
Alcohol-Related Injury Crashes	11	12	13	17
Percent of Alcohol-Related Injury Crashes to Total Injury Crashes	5%	7%	7%	8%

Virginia House District 73 Speed Crash Statistics

Report Generated May, 2023

	Count	Highest Time Period(s)	Highest Day(s)	Highest Month(s)
Fatal Crashes	3	3:00pm - 5:59pm	Monday - Sunday	August
Resulting Fatalities	3	6:00am - 8:59am (66%)	(66%)	(67%)
Serious Injury Crashes	17	9:00pm - 11:59pm (29%)	Saturday (24%)	March (24%)



House District 73 Speed-Related Crashes

Interstate Crashes

Non-interstate Crashes

- Fatal
- Serious Injury

- Fatal
- Serious Injury

The blue gradient represents the density of all speed-related crashes.

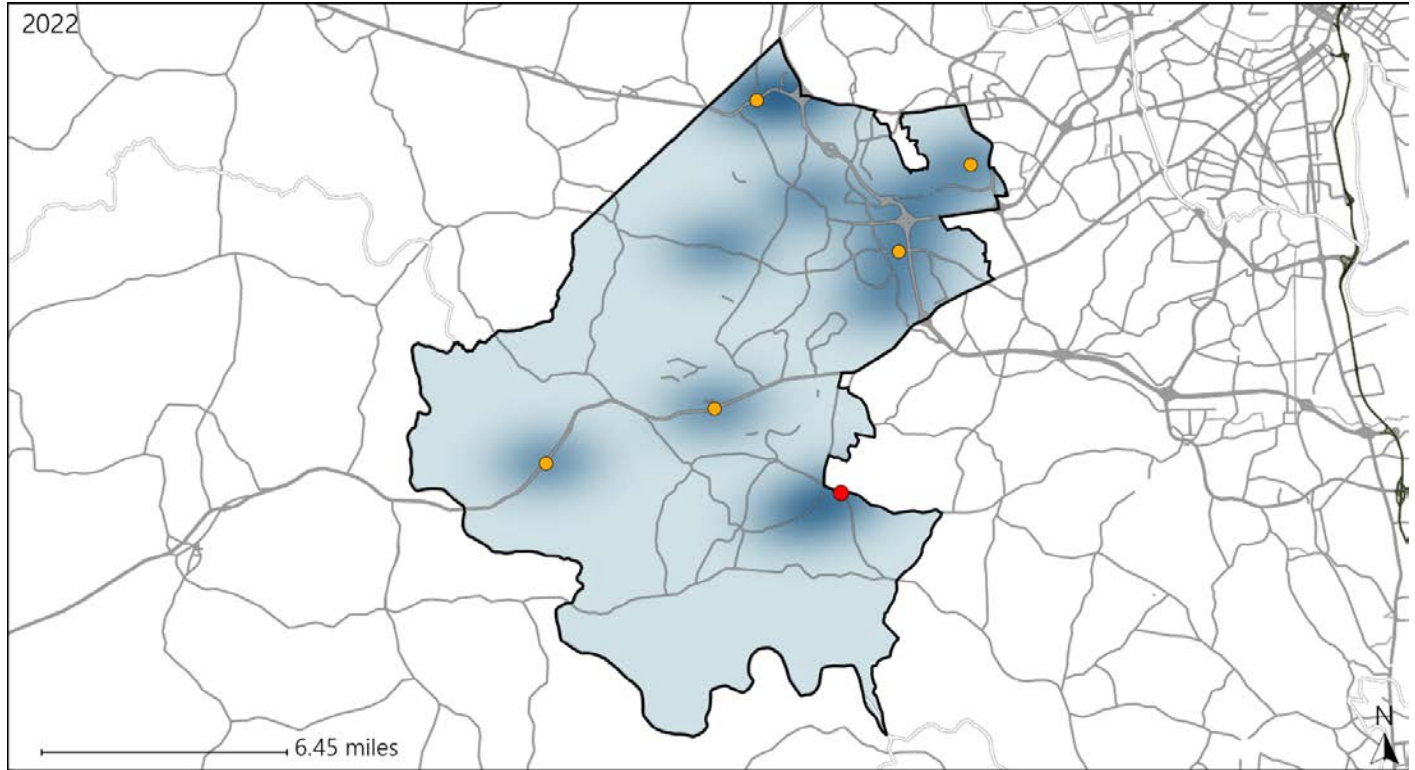


Available Crash Data - Calendar Year (CY)	CY 2019	CY 2020	CY 2021	CY 2022
Total Crashes	958	778	876	940
Fatal Crashes	8	9	4	5
Injury Crashes	224	182	189	215
Speed-Related Fatal Crashes	3	6	2	3
Percent of Speed-Related Fatal Crashes to Total Fatal Crashes	38%	67%	50%	60%
Speed-Related Injury Crashes	44	38	43	47
Percent of Speed-Related Injury Crashes to Total Injury Crashes	20%	21%	23%	22%

Virginia House District 73 Unrestrained Crash Statistics

Report Generated May, 2023

	Count	Highest Time Period(s)	Highest Day(s)	Highest Month(s)
Fatal Crashes	1	3:00pm - 5:59pm	Saturday	December
Unrestrained Fatalities	1	(100%)	(100%)	(100%)
Serious Injury Crashes	5	3:00pm - 5:59pm	Friday • Saturday	December • March
		(40%)	(40%)	(80%)



House District 73 Unrestrained-Related Crashes

Interstate Crashes

- Fatal
- Serious Injury

Non-interstate Crashes

- Fatal
- Serious Injury

The blue gradient represents the density of all unrestrained-related crashes.

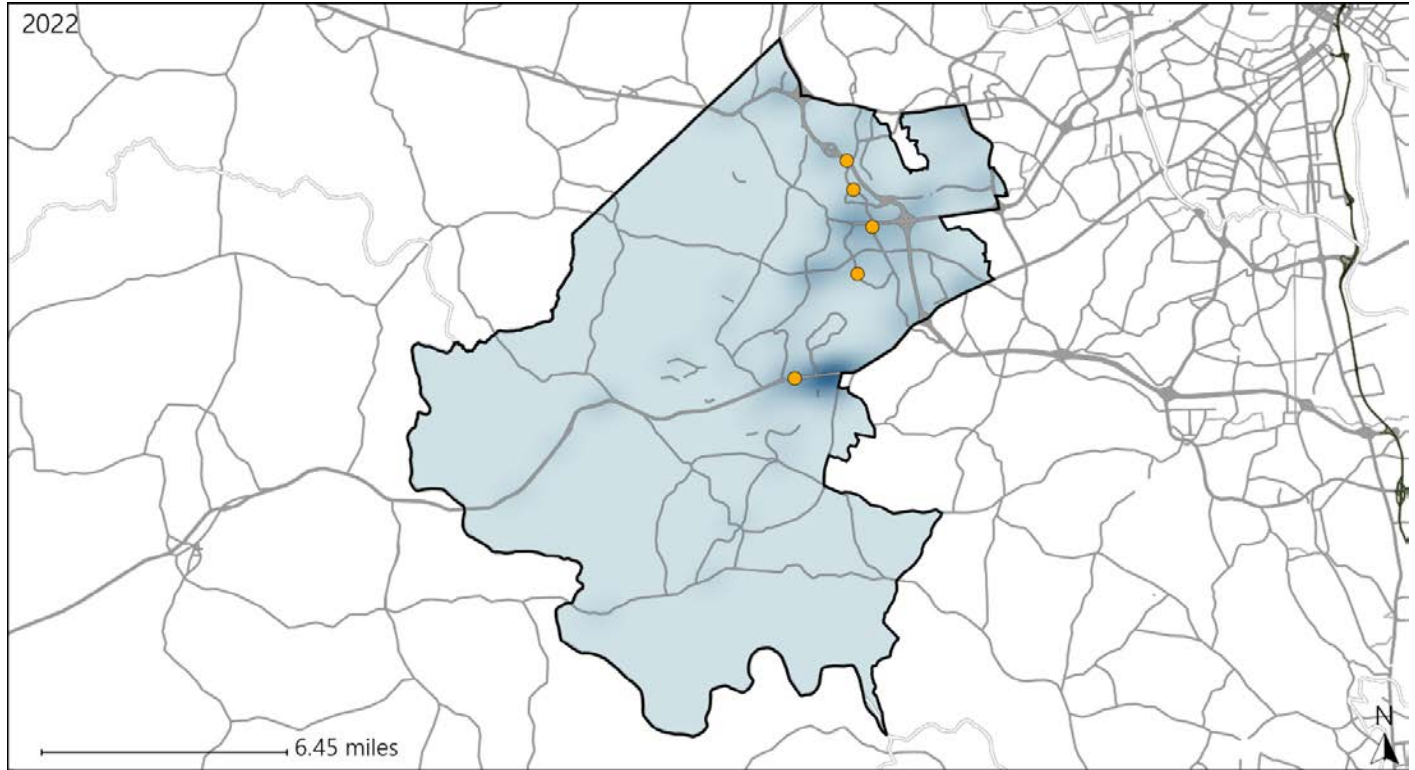


Available Crash Data - Calendar Year (CY)	CY 2019	CY 2020	CY 2021	CY 2022
Total Crashes	958	778	876	940
Fatalities	9	11	4	5
Injuries	387	278	292	328
Unrestrained Fatalities	2	5	1	1
Percent of Unrestrained Fatalities to Total Fatalities	22%	45%	25%	20%
Unrestrained Injuries	24	16	19	11
Percent of Unrestrained Injuries to Total Injuries	6%	6%	7%	3%

Virginia House District 73 Distracted Driving Crash Statistics

Report Generated May, 2023

	Count	Highest Time Period(s)	Highest Day(s)	Highest Month(s)
Fatal Crashes	0	-	-	-
Resulting Fatalities	0	-	-	-
Serious Injury Crashes	5	3:00am - 5:59am (40%)	Saturday (60%)	December • June (40%)



House District 73 Distracted Driving-Related Crashes

- | | |
|--------------------|------------------------|
| Interstate Crashes | Non-interstate Crashes |
| ● Fatal | ● Fatal |
| ● Serious Injury | ● Serious Injury |

The blue gradient represents the density of all distracted driving-related crashes.



Available Crash Data - Calendar Year (CY)	CY 2019	CY 2020	CY 2021	CY 2022
Total Crashes	958	778	876	940
Fatal Crashes	8	9	4	5
Injury Crashes	224	182	189	215
Distracted Driving-Related Fatal Crashes	2	1	1	0
Percent of Distracted Driving-Related Fatal Crashes to Total Fatal Crashes	25%	11%	25%	0%
Distracted Driving-Related Injury Crashes	43	30	37	27
Percent of Distracted Driving-Related Injury Crashes to Total Injury Crashes	19%	16%	20%	13%