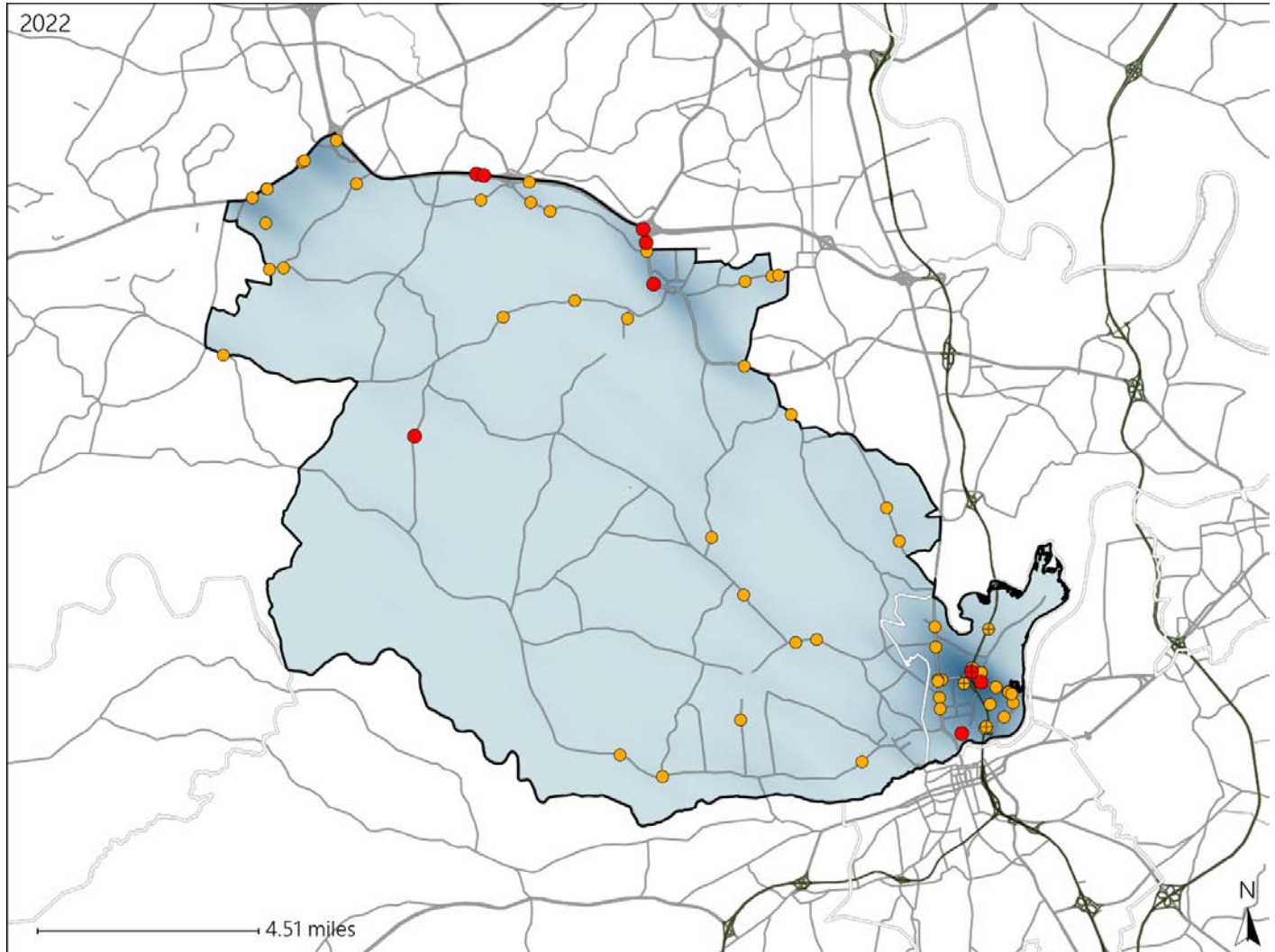


# Virginia House District 74 Crash Statistics

Report Generated May, 2023

	Count	Highest Time Period(s)	Highest Day(s)	Highest Month(s)
<b>Fatal Crashes</b>	<b>9</b>	3:00pm - 5:59pm	Sunday • Thursday	September
<b>Resulting Fatalities</b>	<b>9</b>	6:00am - 8:59am (44%)	(44%)	(56%)
<b>Serious Injury Crashes</b>	<b>55</b>	3:00pm - 5:59pm (22%)	Sunday • Tuesday (36%)	November (20%)



## House District 74 Crashes

Interstate Crashes

- Fatal
- Serious Injury

Non-interstate Crashes

- Fatal
- Serious Injury

The blue gradient represents the density of all crashes.

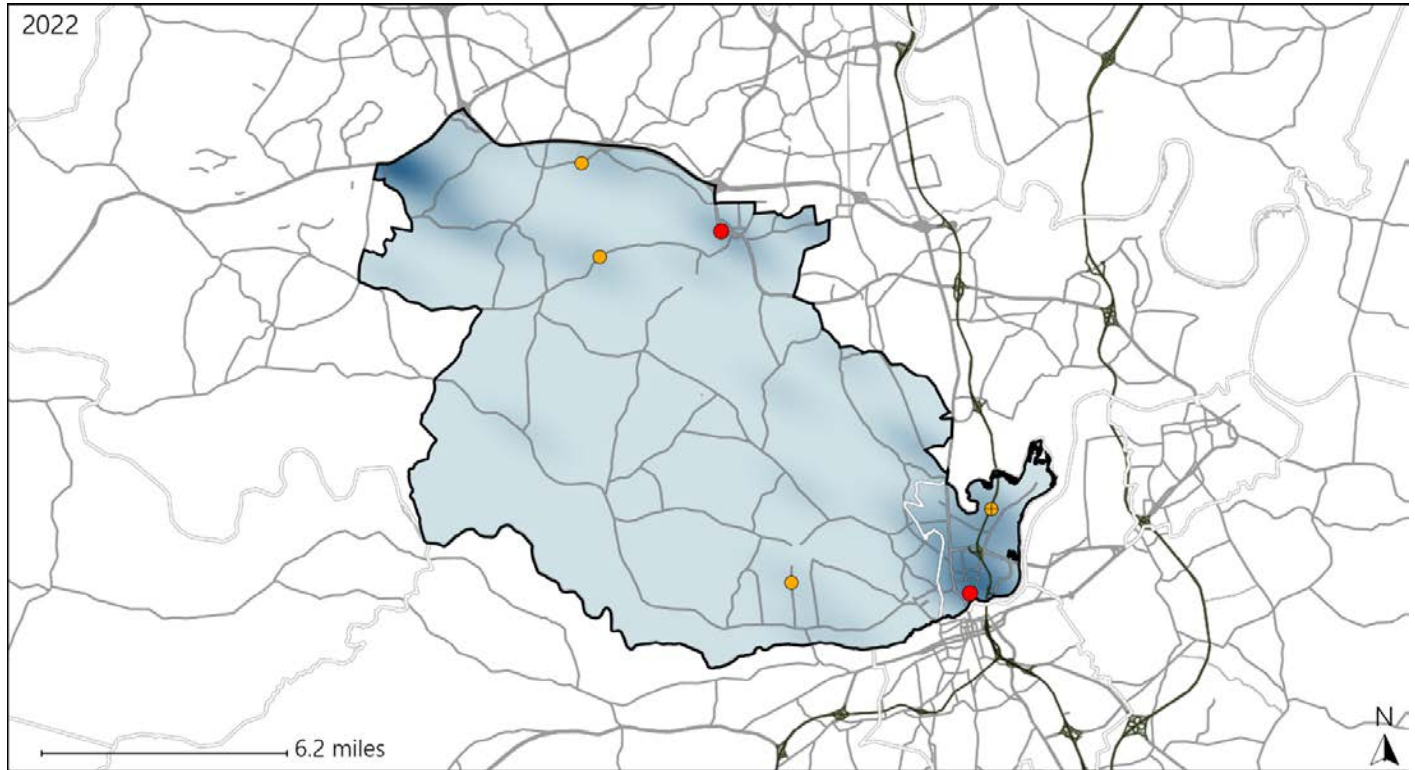


Available Crash Data - Calendar Year (CY)	CY 2019	CY 2020	CY 2021	CY 2022
Total Crashes	1184	1023	1115	1242
Fatal Crashes	6	2	5	9
Injury Crashes	339	239	343	367

# Virginia House District 74 Alcohol Crash Statistics

Report Generated May, 2023

	Count	Highest Time Period(s)	Highest Day(s)	Highest Month(s)
<b>Fatal Crashes</b>	<b>2</b>	<b>6:00pm - 8:59pm</b>	<b>Saturday • Wednesday</b>	<b>May • September</b>
<b>Resulting Fatalities</b>	<b>2</b>	<b>9:00am - 11:59am</b> (100%)	<b>(100%)</b>	<b>(100%)</b>
<b>Serious Injury Crashes</b>	<b>4</b>	<b>3:00pm - 5:59pm</b> (50%)	<b>Saturday</b> (50%)	<b>November</b> (50%)



### House District 74 Alcohol-Related Crashes

Interstate Crashes                      Non-interstate Crashes  
 ● Fatal                                      ● Fatal  
 ⊕ Serious Injury                          ⊕ Serious Injury

The blue gradient represents the density of all alcohol-related crashes.

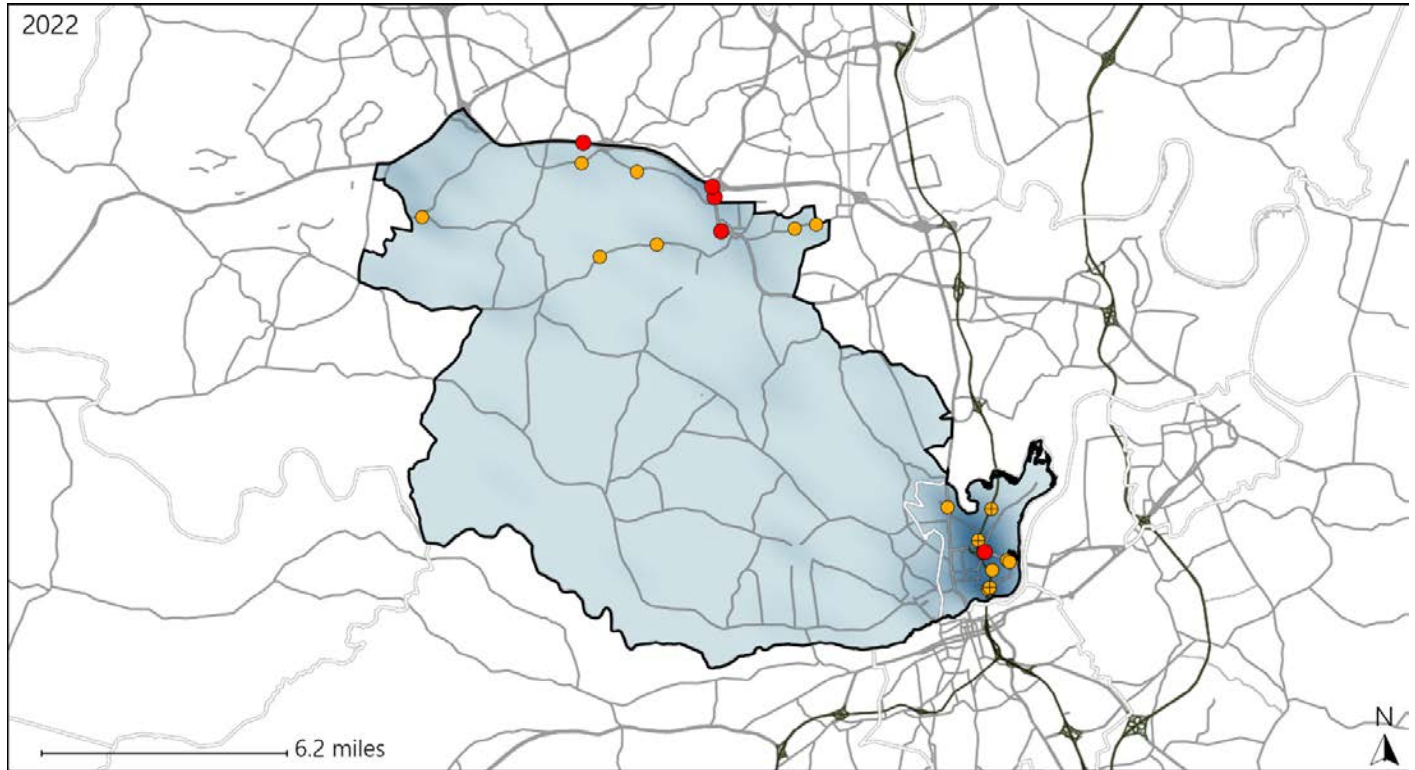


Available Crash Data - Calendar Year (CY)	CY 2019	CY 2020	CY 2021	CY 2022
Total Crashes	1184	1023	1115	1242
Fatal Crashes	6	2	5	9
Injury Crashes	339	239	343	367
Alcohol-Related Fatal Crashes	2	1	0	2
Percent of Alcohol-Related Fatal Crashes to Total Fatal Crashes	33%	50%	0%	22%
Alcohol-Related Injury Crashes	21	26	32	22
Percent of Alcohol-Related Injury Crashes to Total Injury Crashes	6%	11%	9%	6%

# Virginia House District 74 Speed Crash Statistics

Report Generated May, 2023

	Count	Highest Time Period(s)	Highest Day(s)	Highest Month(s)
<b>Fatal Crashes</b>	<b>5</b>	<b>3:00pm - 5:59pm</b>	<b>Wednesday</b>	<b>September</b>
<b>Resulting Fatalities</b>	<b>5</b>	<b>6:00am - 8:59am</b> (40%)	<b>(40%)</b>	<b>(100%)</b>
<b>Serious Injury Crashes</b>	<b>15</b>	<b>9:00pm - 11:59pm</b> (40%)	<b>Monday</b> (27%)	<b>November</b> (27%)



## House District 74 Speed-Related Crashes

Interstate Crashes                      Non-interstate Crashes  
 ● Fatal                                      ● Fatal  
 ⊕ Serious Injury                          ⊕ Serious Injury

The blue gradient represents the density of all speed-related crashes.



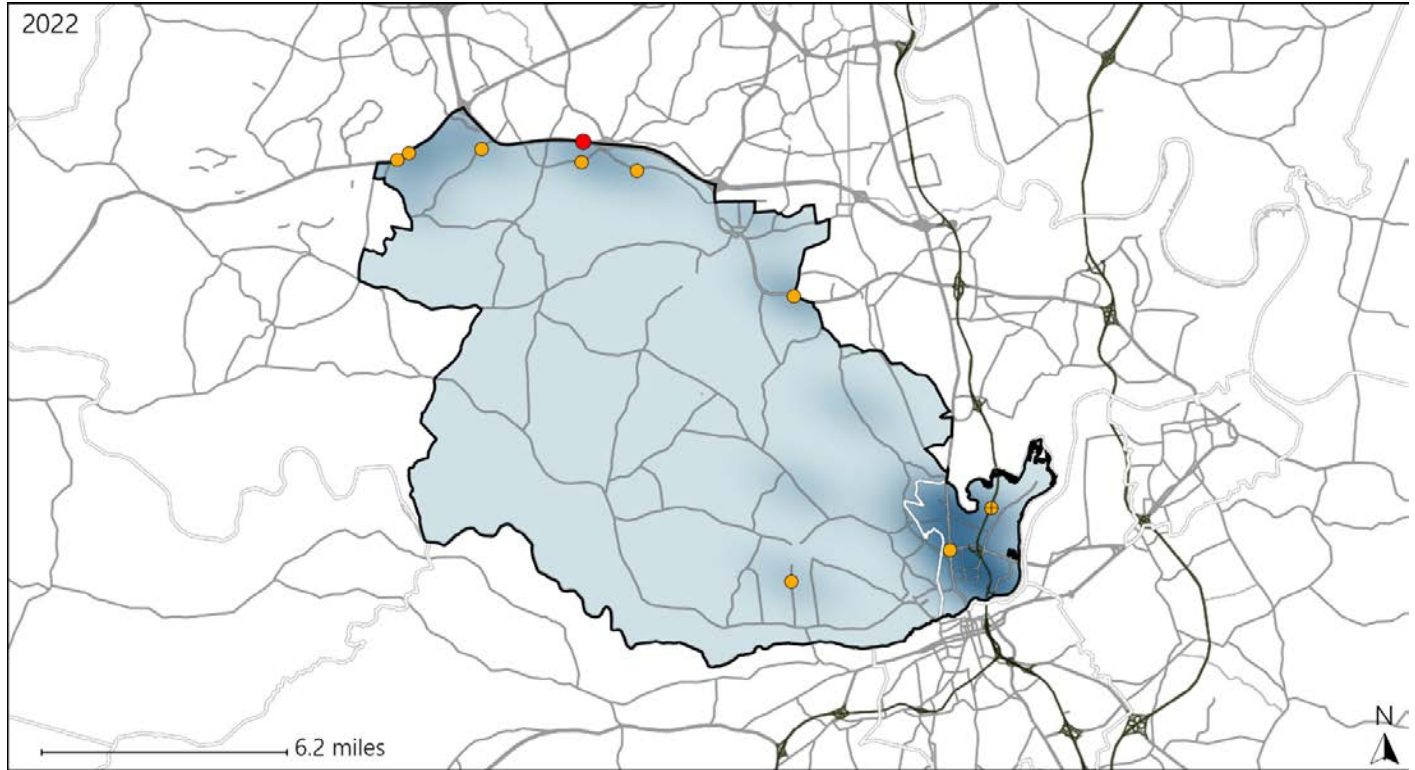
Available Crash Data - Calendar Year (CY)	CY 2019	CY 2020	CY 2021	CY 2022
Total Crashes	1184	1023	1115	1242
Fatal Crashes	6	2	5	9
Injury Crashes	339	239	343	367
Speed-Related Fatal Crashes	3	0	1	5
Percent of Speed-Related Fatal Crashes to Total Fatal Crashes	50%	0%	20%	56%
Speed-Related Injury Crashes	66	39	53	67
Percent of Speed-Related Injury Crashes to Total Injury Crashes	19%	16%	15%	18%



# Virginia House District 74 Unrestrained Crash Statistics

Report Generated May, 2023

	Count	Highest Time Period(s)	Highest Day(s)	Highest Month(s)
<b>Fatal Crashes</b>	<b>1</b>	<b>6:00am - 8:59am</b>	<b>Sunday</b>	<b>September</b>
<b>Unrestrained Fatalities</b>	<b>1</b>	<b>(100%)</b>	<b>(100%)</b>	<b>(100%)</b>
<b>Serious Injury Crashes</b>	<b>9</b>	<b>3:00pm - 5:59pm</b>	<b>Saturday</b>	<b>November</b>
		<b>(56%)</b>	<b>(33%)</b>	<b>(44%)</b>



## House District 74 Unrestrained-Related Crashes

Interstate Crashes

Non-interstate Crashes

- Fatal
- Serious Injury

- Fatal
- Serious Injury

The blue gradient represents the density of all unrestrained-related crashes.

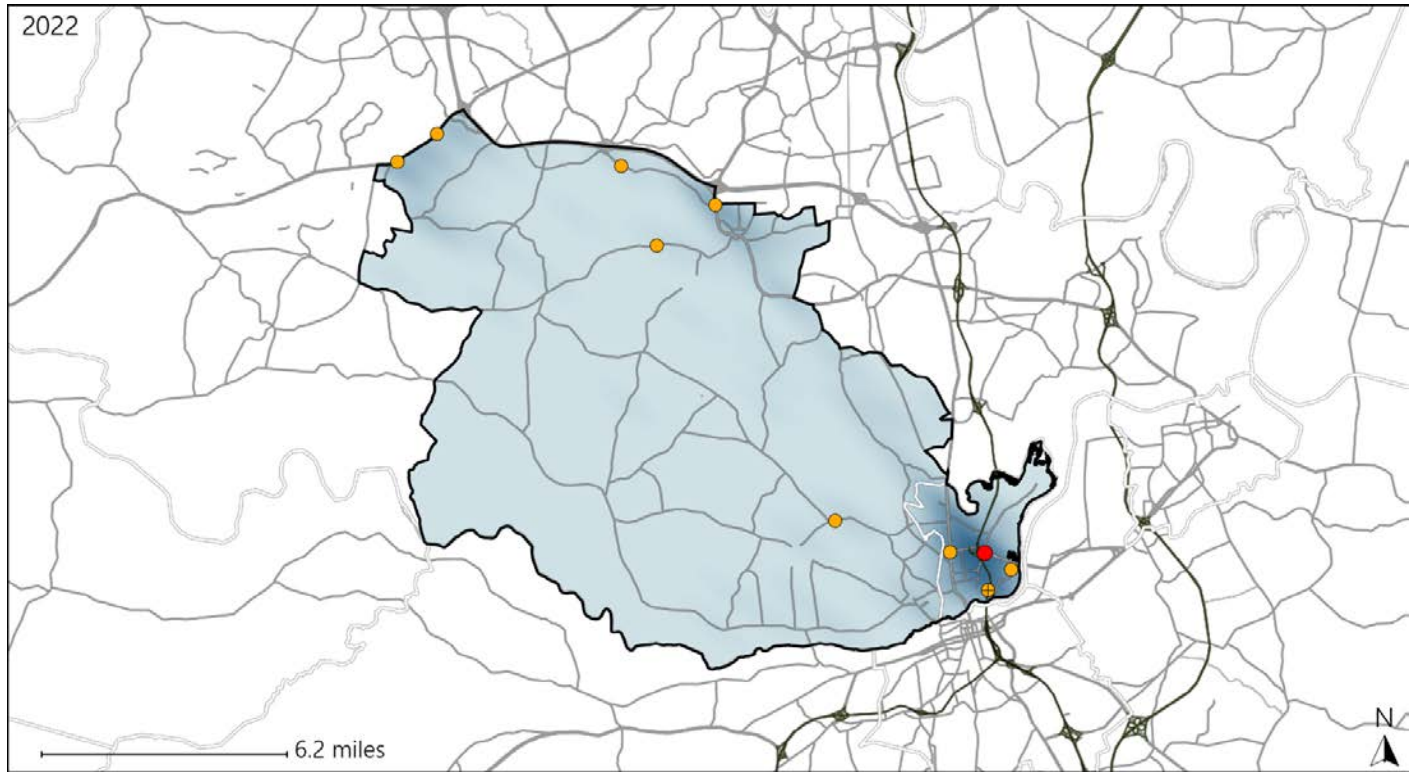


Available Crash Data - Calendar Year (CY)	CY 2019	CY 2020	CY 2021	CY 2022
<b>Total Crashes</b>	<b>1184</b>	<b>1023</b>	<b>1115</b>	<b>1242</b>
<b>Fatalities</b>	<b>6</b>	<b>2</b>	<b>5</b>	<b>9</b>
<b>Injuries</b>	<b>570</b>	<b>401</b>	<b>526</b>	<b>613</b>
<b>Unrestrained Fatalities</b>	<b>2</b>	<b>1</b>	<b>2</b>	<b>1</b>
<b>Percent of Unrestrained Fatalities to Total Fatalities</b>	<b>33%</b>	<b>50%</b>	<b>40%</b>	<b>11%</b>
<b>Unrestrained Injuries</b>	<b>45</b>	<b>28</b>	<b>29</b>	<b>35</b>
<b>Percent of Unrestrained Injuries to Total Injuries</b>	<b>8%</b>	<b>7%</b>	<b>6%</b>	<b>6%</b>

# Virginia House District 74 Distracted Driving Crash Statistics

Report Generated May, 2023

	Count	Highest Time Period(s)	Highest Day(s)	Highest Month(s)
<b>Fatal Crashes</b>	<b>1</b>	<b>9:00am - 11:59am</b>	<b>Wednesday</b>	<b>September</b>
<b>Resulting Fatalities</b>	<b>1</b>	(100%)	(100%)	(100%)
<b>Serious Injury Crashes</b>	<b>9</b>	<b>3:00pm - 5:59pm</b>	<b>Wednesday</b>	<b>April</b>
		(44%)	(33%)	(33%)



## House District 74 Distracted Driving-Related Crashes

- |  |  |
|--|--|
| Interstate Crashes                                   | Non-interstate Crashes                               |
| <span style="color: red;">●</span> Fatal             | <span style="color: red;">●</span> Fatal             |
| <span style="color: orange;">●</span> Serious Injury | <span style="color: orange;">●</span> Serious Injury |

The blue gradient represents the density of all distracted driving-related crashes.



Available Crash Data - Calendar Year (CY)	CY 2019	CY 2020	CY 2021	CY 2022
Total Crashes	1184	1023	1115	1242
Fatal Crashes	6	2	5	9
Injury Crashes	339	239	343	367
Distracted Driving-Related Fatal Crashes	2	1	0	1
Percent of Distracted Driving-Related Fatal Crashes to Total Fatal Crashes	33%	50%	0%	11%
Distracted Driving-Related Injury Crashes	60	53	72	74
Percent of Distracted Driving-Related Injury Crashes to Total Injury Crashes	18%	22%	21%	20%