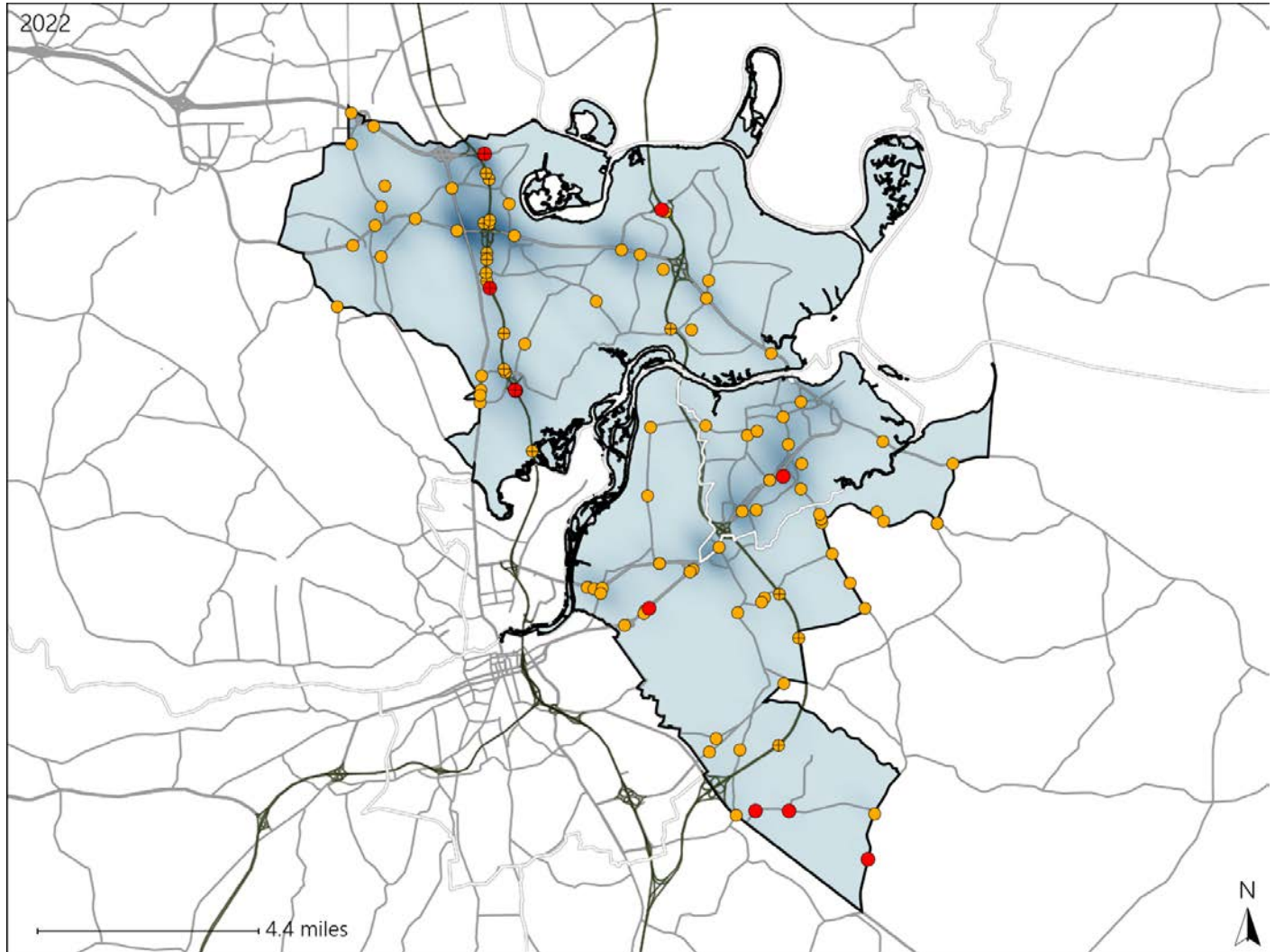


Virginia House District 75 Crash Statistics

Report Generated May, 2023

	Count	Highest Time Period(s)	Highest Day(s)	Highest Month(s)
Fatal Crashes	10	6:00pm - 8:59pm	Wednesday	October
Resulting Fatalities	11	9:00am - 11:59am (40%)	(40%)	(30%)
Serious Injury Crashes	97	6:00pm - 8:59pm (21%)	Friday (19%)	April (18%)



House District 75 Crashes

Interstate Crashes

- Fatal
- Serious Injury

Non-interstate Crashes

- Fatal
- Serious Injury

The blue gradient represents the density of all crashes.

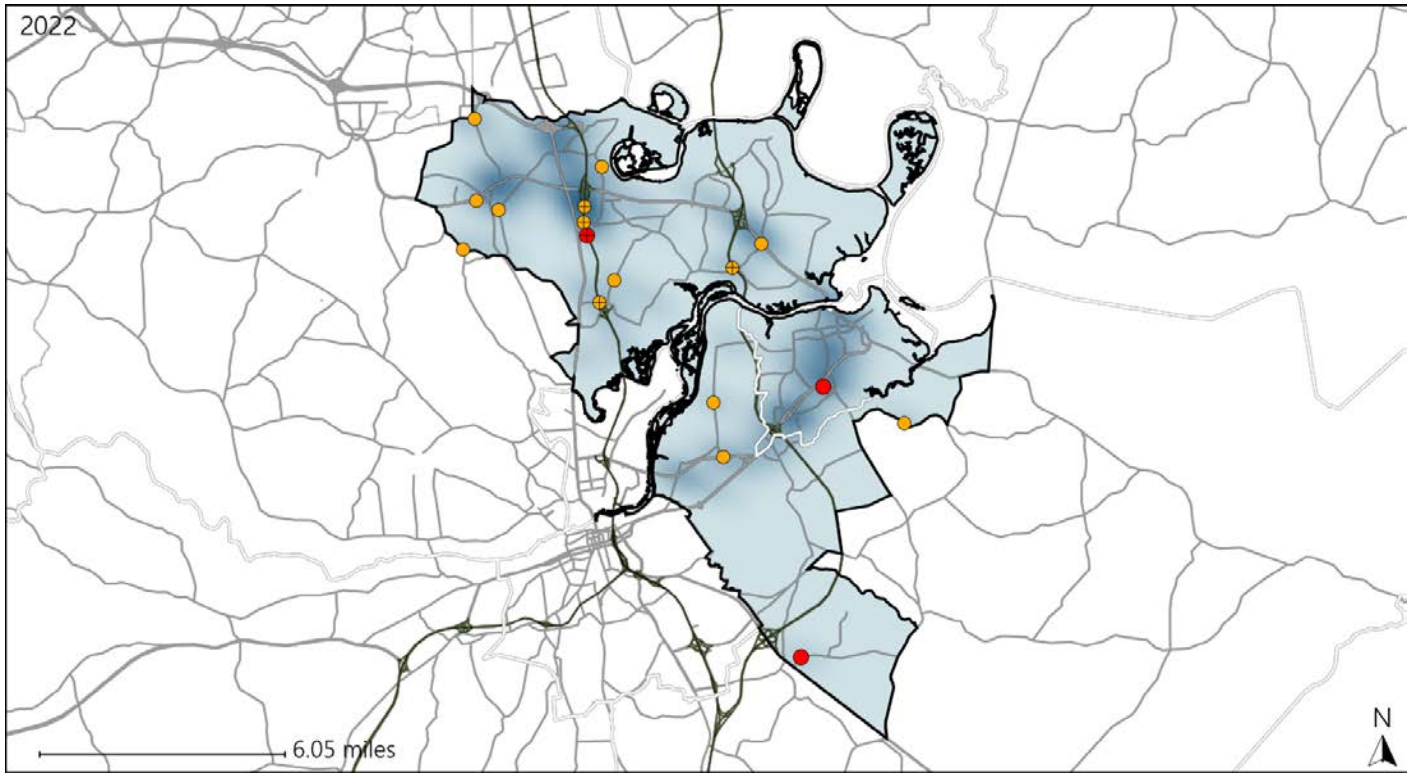


Available Crash Data - Calendar Year (CY)	CY 2019	CY 2020	CY 2021	CY 2022
Total Crashes	1576	1431	1578	1692
Fatal Crashes	4	6	12	10
Injury Crashes	667	641	718	750

Virginia House District 75 Alcohol Crash Statistics

Report Generated May, 2023

	Count	Highest Time Period(s)	Highest Day(s)	Highest Month(s)
Fatal Crashes	3	6:00am - 8:59am	Wednesday	February • January
Resulting Fatalities	4	9:00pm - 11:59pm (66%)	(67%)	(66%)
Serious Injury Crashes	14	9:00pm - 11:59pm Midnight - 2:59am (58%)	Friday • Sunday (42%)	July (21%)



House District 75 Alcohol-Related Crashes

Interstate Crashes Non-interstate Crashes
 ● Fatal ● Fatal
 ⊕ Serious Injury ⊕ Serious Injury

The blue gradient represents the density of all alcohol-related crashes.

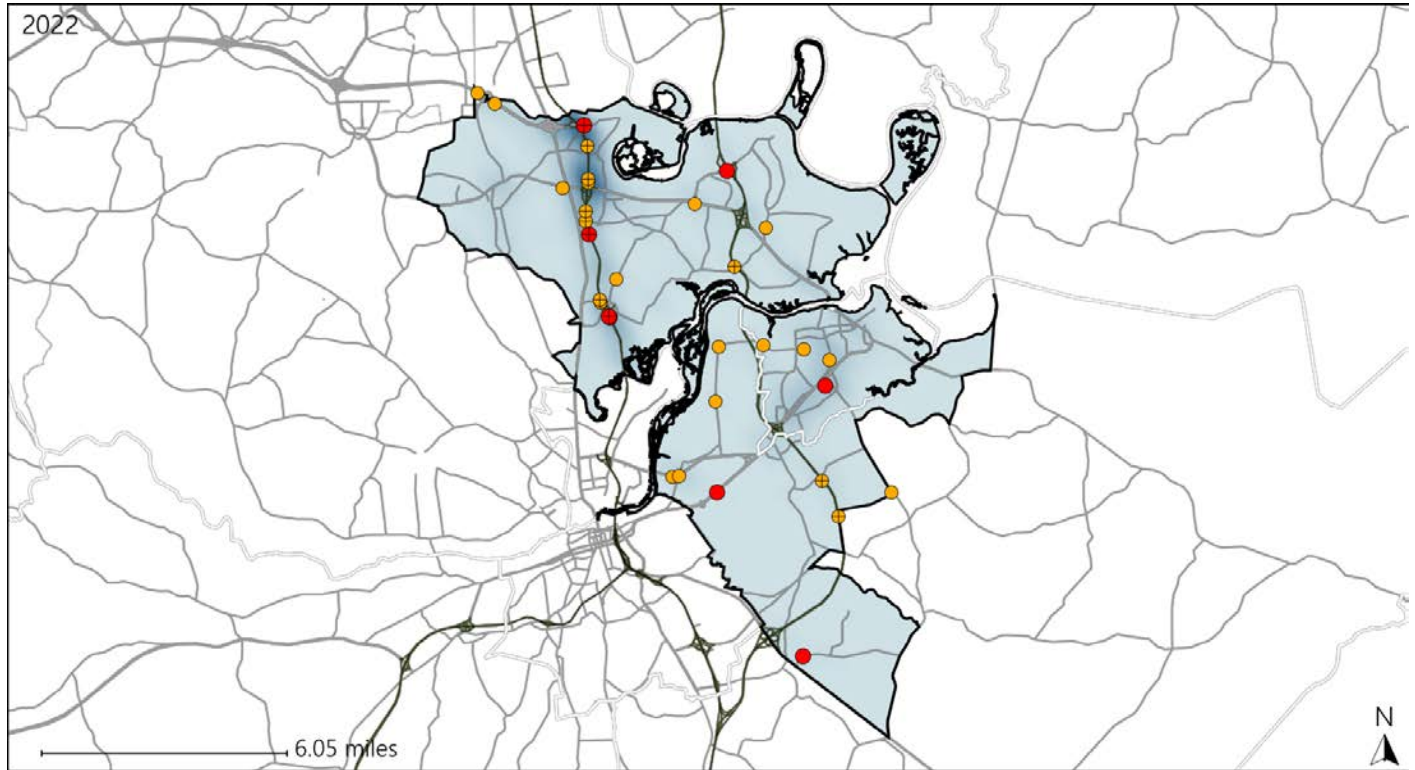


Available Crash Data - Calendar Year (CY)	CY 2019	CY 2020	CY 2021	CY 2022
Total Crashes	1576	1431	1578	1692
Fatal Crashes	4	6	12	10
Injury Crashes	667	641	718	750
Alcohol-Related Fatal Crashes	3	1	3	3
Percent of Alcohol-Related Fatal Crashes to Total Fatal Crashes	75%	17%	25%	30%
Alcohol-Related Injury Crashes	28	46	71	50
Percent of Alcohol-Related Injury Crashes to Total Injury Crashes	4%	7%	10%	7%

Virginia House District 75 Speed Crash Statistics

Report Generated May, 2023

	Count	Highest Time Period(s)	Highest Day(s)	Highest Month(s)
Fatal Crashes	8	9:00pm - 11:59pm	Wednesday	November
Resulting Fatalities	9	Midnight - 2:59am (50%)	(50%)	(25%)
Serious Injury Crashes	24	9:00pm - 11:59pm (25%)	Sunday (29%)	April (29%)



House District 75 Speed-Related Crashes

Interstate Crashes Non-interstate Crashes
 ● Fatal ● Fatal
 ⊕ Serious Injury ⊕ Serious Injury

The blue gradient represents the density of all speed-related crashes.

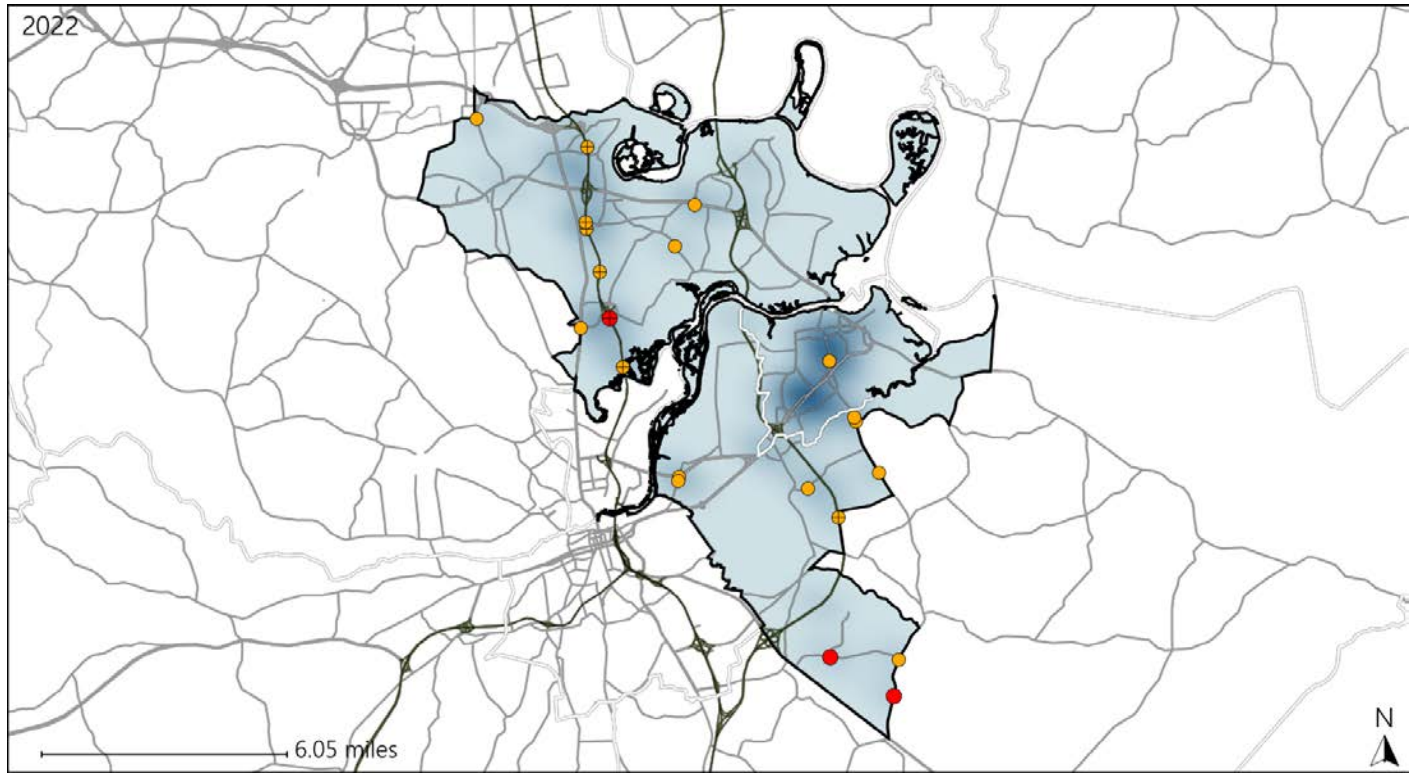


Available Crash Data - Calendar Year (CY)	CY 2019	CY 2020	CY 2021	CY 2022
Total Crashes	1576	1431	1578	1692
Fatal Crashes	4	6	12	10
Injury Crashes	667	641	718	750
Speed-Related Fatal Crashes	1	5	6	8
Percent of Speed-Related Fatal Crashes to Total Fatal Crashes	25%	83%	50%	80%
Speed-Related Injury Crashes	120	115	146	151
Percent of Speed-Related Injury Crashes to Total Injury Crashes	18%	18%	20%	20%

Virginia House District 75 Unrestrained Crash Statistics

Report Generated May, 2023

	Count	Highest Time Period(s)	Highest Day(s)	Highest Month(s)
Fatal Crashes	3	6:00pm - 8:59pm	Sunday • Thursday	October
Unrestrained Fatalities	3	9:00am - 11:59am (66%)	(66%)	(100%)
Serious Injury Crashes	18	6:00am - 8:59am Noon - 2:59pm (56%)	Monday (22%)	April • December (34%)



House District 75 Unrestrained-Related Crashes

- | | |
|--------------------|------------------------|
| Interstate Crashes | Non-interstate Crashes |
| ● Fatal | ● Fatal |
| ⊕ Serious Injury | ⊕ Serious Injury |

The blue gradient represents the density of all unrestrained-related crashes.

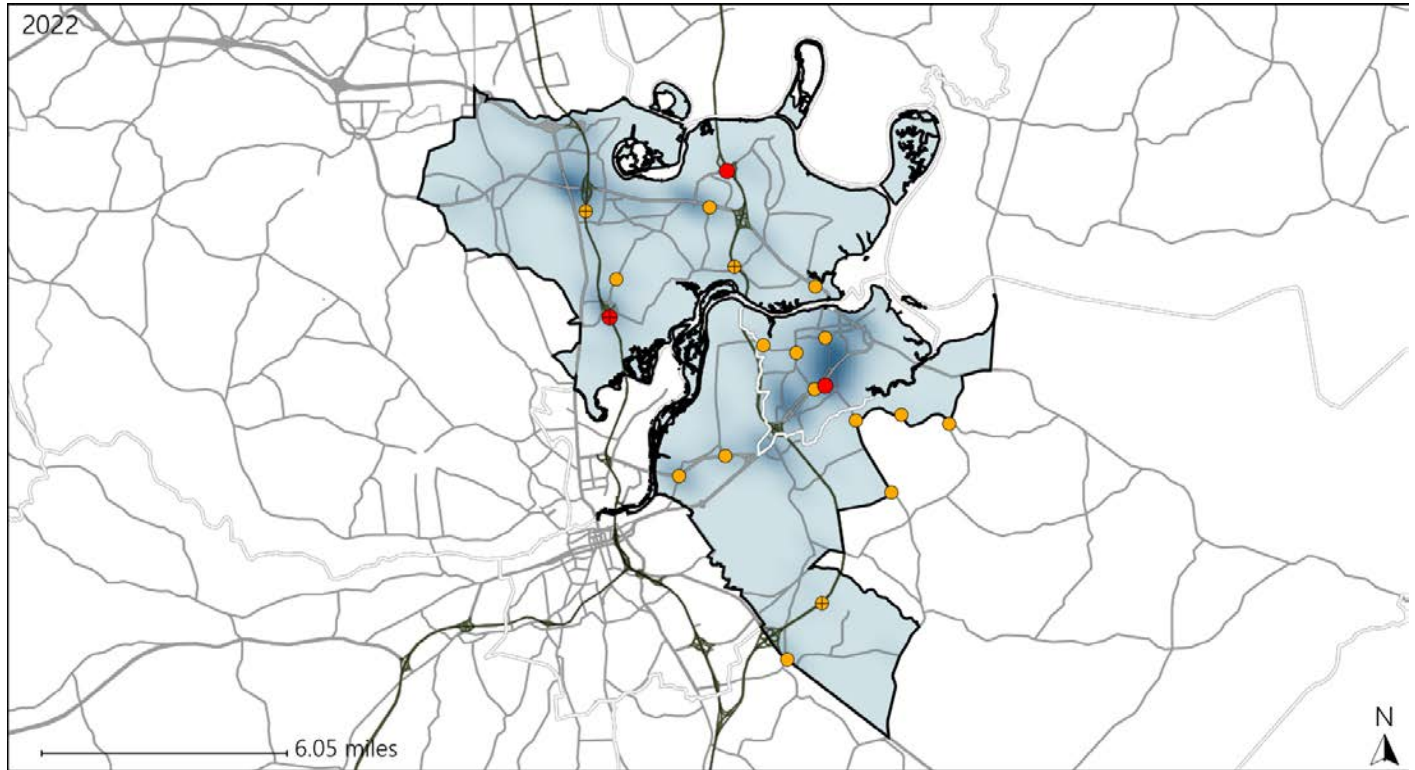


Available Crash Data - Calendar Year (CY)	CY 2019	CY 2020	CY 2021	CY 2022
Total Crashes	1576	1431	1578	1692
Fatalities	4	7	13	11
Injuries	1254	1154	1314	1307
Unrestrained Fatalities	2	5	4	3
Percent of Unrestrained Fatalities to Total Fatalities	50%	71%	31%	27%
Unrestrained Injuries	70	72	71	67
Percent of Unrestrained Injuries to Total Injuries	6%	6%	5%	5%

Virginia House District 75 Distracted Driving Crash Statistics

Report Generated May, 2023

	Count	Highest Time Period(s)	Highest Day(s)	Highest Month(s)
Fatal Crashes	3	9:00am - 11:59am	Monday • Thursday	August • November
Resulting Fatalities	3	Midnight - 2:59am (66%)	(66%)	(66%)
Serious Injury Crashes	17	3:00pm - 5:59pm (29%)	Sunday (24%)	July • May (36%)



House District 75 Distracted Driving-Related Crashes

- | | |
|--|--|
| Interstate Crashes | Non-interstate Crashes |
| ● Fatal | ● Fatal |
| + Serious Injury | + Serious Injury |

The blue gradient represents the density of all distracted driving-related crashes.



Available Crash Data - Calendar Year (CY)	CY 2019	CY 2020	CY 2021	CY 2022
Total Crashes	1576	1431	1578	1692
Fatal Crashes	4	6	12	10
Injury Crashes	667	641	718	750
Distracted Driving-Related Fatal Crashes	0	1	4	3
Percent of Distracted Driving-Related Fatal Crashes to Total Fatal Crashes	0%	17%	33%	30%
Distracted Driving-Related Injury Crashes	124	130	128	147
Percent of Distracted Driving-Related Injury Crashes to Total Injury Crashes	19%	20%	18%	20%