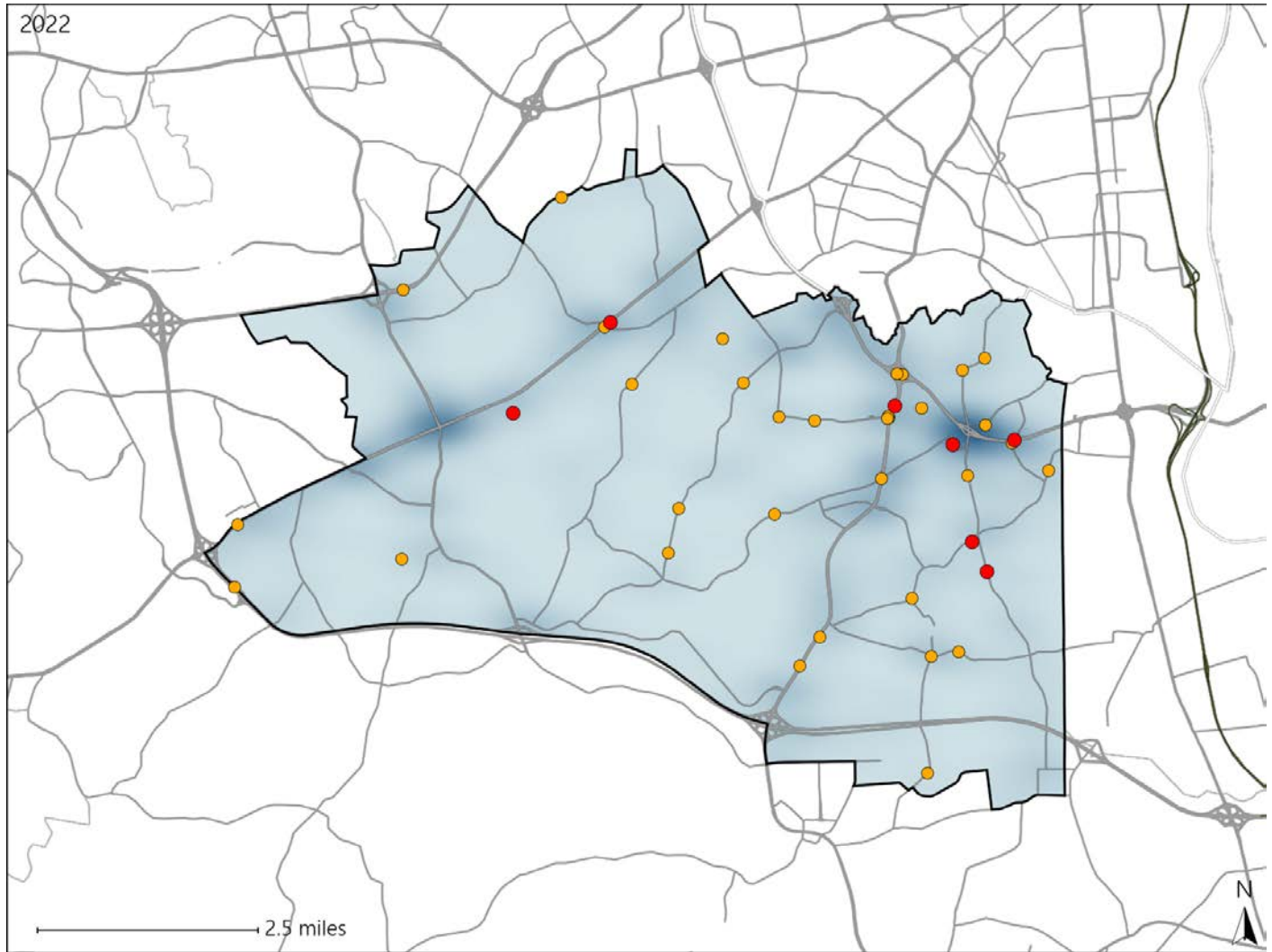


Virginia House District 76 Crash Statistics

Report Generated May, 2023

	Count	Highest Time Period(s)	Highest Day(s)	Highest Month(s)
Fatal Crashes	7	6:00pm - 8:59pm	Thursday	February • July
Resulting Fatalities	7	(43%)	(43%)	(58%)
Serious Injury Crashes	34	6:00pm - 8:59pm	Thursday	June
		(29%)	(32%)	(24%)



House District 76 Crashes

Interstate Crashes

- Fatal
- Serious Injury

Non-interstate Crashes

- Fatal
- Serious Injury

The blue gradient represents the density of all crashes.

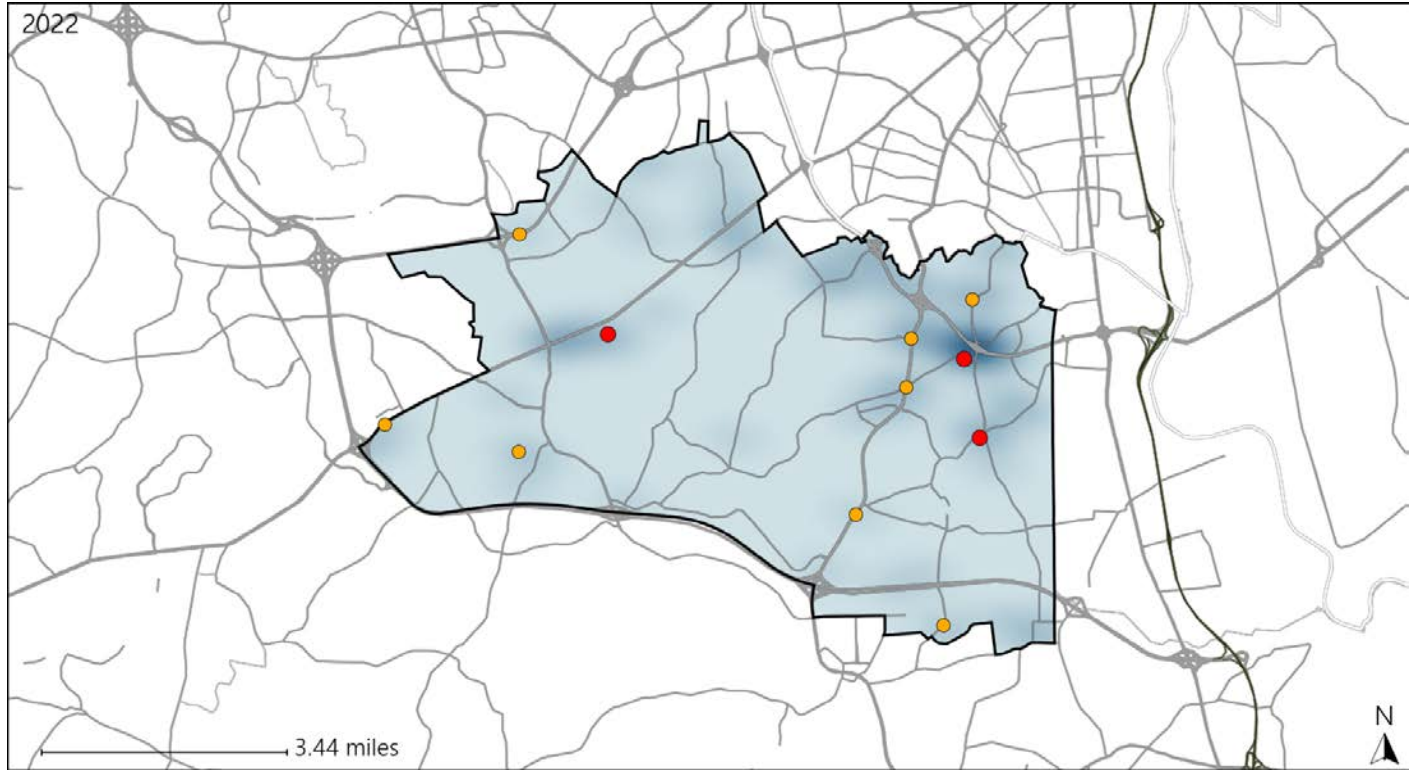


Available Crash Data - Calendar Year (CY)	CY 2019	CY 2020	CY 2021	CY 2022
Total Crashes	1000	838	903	1000
Fatal Crashes	2	7	6	7
Injury Crashes	258	200	224	230

Virginia House District 76 Alcohol Crash Statistics

Report Generated May, 2023

	Count	Highest Time Period(s)	Highest Day(s)	Highest Month(s)
Fatal Crashes	3	6:00pm - 8:59pm	Saturday	February • July
Resulting Fatalities	3	(67%)	(67%)	(66%)
Serious Injury Crashes	8	3:00am - 5:59am	Thursday	November
		(38%)	(50%)	(25%)



House District 76 Alcohol-Related Crashes

Interstate Crashes

Non-interstate Crashes

- Fatal
- Serious Injury

- Fatal
- Serious Injury

The blue gradient represents the density of all alcohol-related crashes.

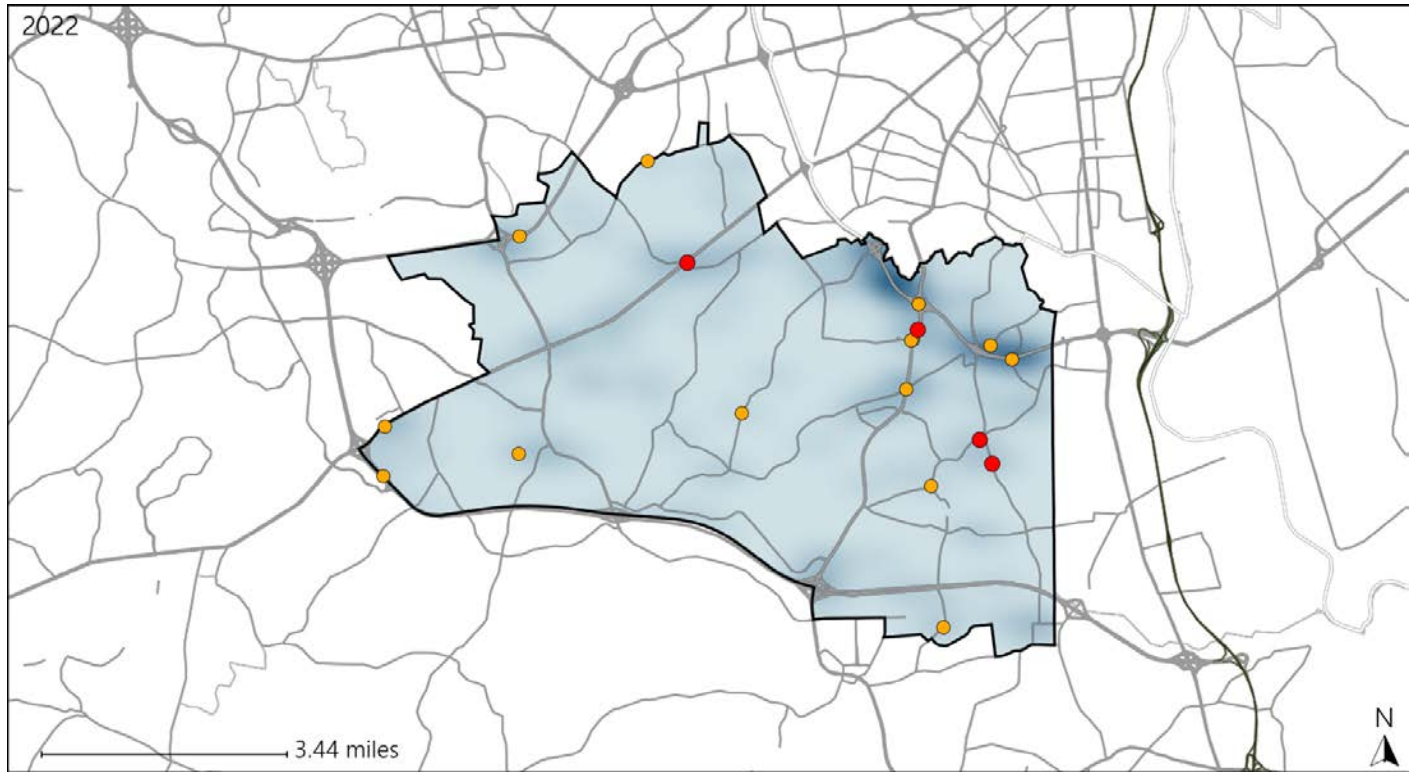


Available Crash Data - Calendar Year (CY)	CY 2019	CY 2020	CY 2021	CY 2022
Total Crashes	1000	838	903	1000
Fatal Crashes	2	7	6	7
Injury Crashes	258	200	224	230
Alcohol-Related Fatal Crashes	0	2	3	3
Percent of Alcohol-Related Fatal Crashes to Total Fatal Crashes	0%	29%	50%	43%
Alcohol-Related Injury Crashes	19	18	21	26
Percent of Alcohol-Related Injury Crashes to Total Injury Crashes	7%	9%	9%	11%

Virginia House District 76 Speed Crash Statistics

Report Generated May, 2023

	Count	Highest Time Period(s)	Highest Day(s)	Highest Month(s)
Fatal Crashes	4	6:00am - 8:59am	Thursday	February
Resulting Fatalities	4	(50%)	(50%)	(50%)
Serious Injury Crashes	14	6:00am - 8:59am	Sunday • Thursday	June
		(21%)	(58%)	(36%)



House District 76 Speed-Related Crashes

Interstate Crashes Non-interstate Crashes
 ● Fatal ● Fatal
 ● Serious Injury ● Serious Injury

The blue gradient represents the density of all speed-related crashes.

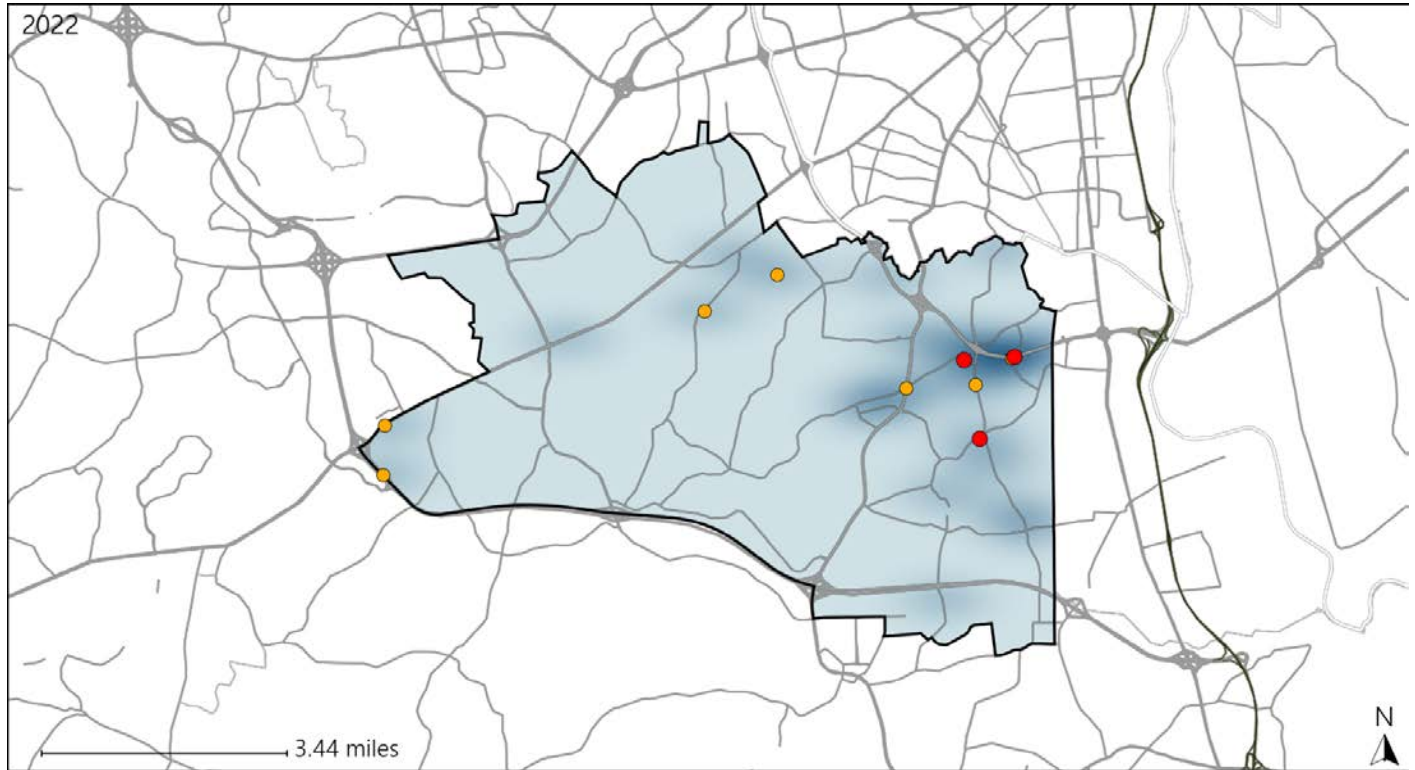


Available Crash Data - Calendar Year (CY)	CY 2019	CY 2020	CY 2021	CY 2022
Total Crashes	1000	838	903	1000
Fatal Crashes	2	7	6	7
Injury Crashes	258	200	224	230
Speed-Related Fatal Crashes	1	5	1	4
Percent of Speed-Related Fatal Crashes to Total Fatal Crashes	50%	71%	17%	57%
Speed-Related Injury Crashes	41	49	62	57
Percent of Speed-Related Injury Crashes to Total Injury Crashes	16%	25%	28%	25%

Virginia House District 76 Unrestrained Crash Statistics

Report Generated May, 2023

	Count	Highest Time Period(s)	Highest Day(s)	Highest Month(s)
Fatal Crashes	3	3:00pm - 5:59pm	Saturday	December • February
Unrestrained Fatalities	3	6:00am - 8:59am (66%)	(67%)	(66%)
Serious Injury Crashes	7	6:00pm - 8:59pm (57%)	Saturday • Sunday (58%)	November (29%)



House District 76 Unrestrained-Related Crashes

- | | |
|--|--|
| Interstate Crashes | Non-interstate Crashes |
| ● Fatal | ● Fatal |
| ● Serious Injury | ● Serious Injury |

The blue gradient represents the density of all unrestrained-related crashes.

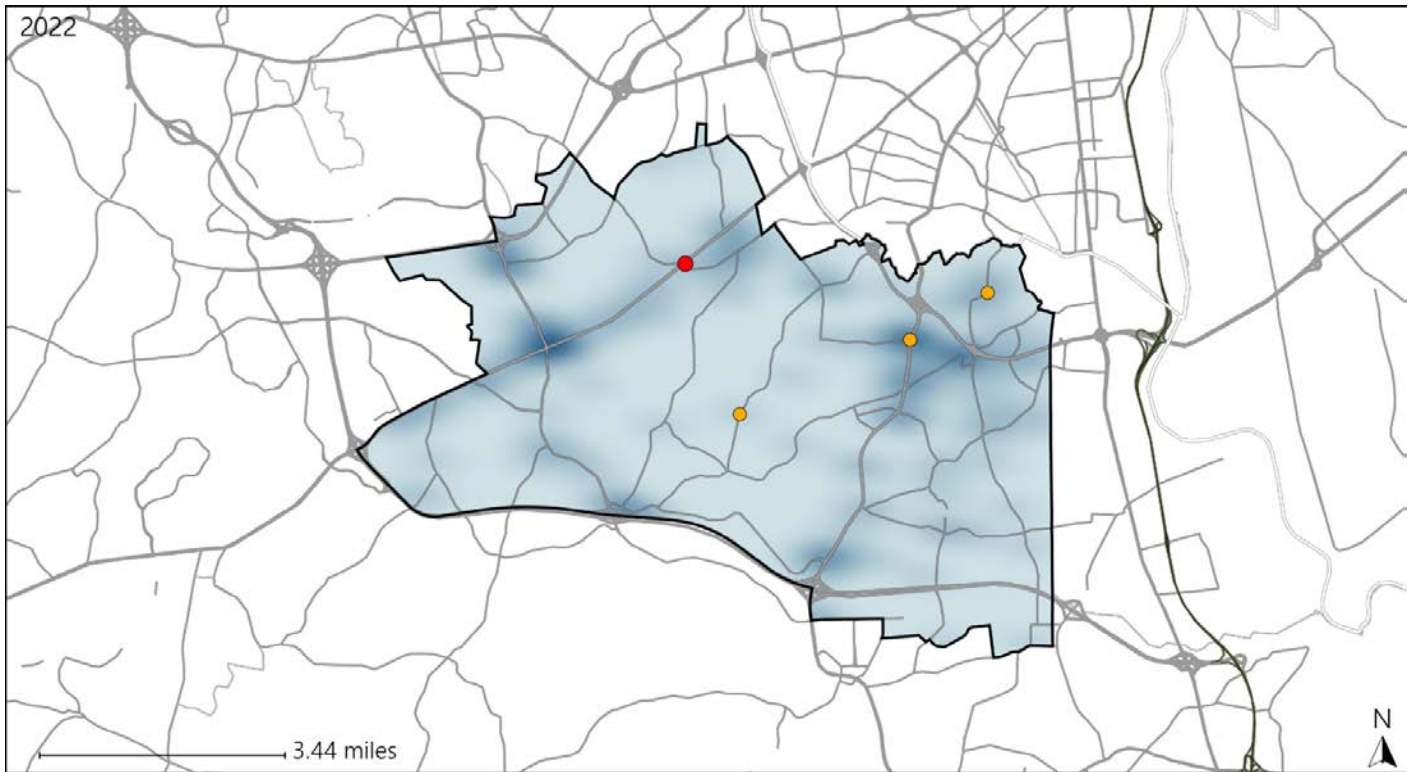


Available Crash Data - Calendar Year (CY)	CY 2019	CY 2020	CY 2021	CY 2022
Total Crashes	1000	838	903	1000
Fatalities	2	7	6	7
Injuries	446	345	357	386
Unrestrained Fatalities	1	2	2	3
Percent of Unrestrained Fatalities to Total Fatalities	50%	29%	33%	43%
Unrestrained Injuries	18	31	40	28
Percent of Unrestrained Injuries to Total Injuries	4%	9%	11%	7%

Virginia House District 76 Distracted Driving Crash Statistics

Report Generated May, 2023

	Count	Highest Time Period(s)	Highest Day(s)	Highest Month(s)
Fatal Crashes	1	6:00am - 8:59am	Wednesday	February
Resulting Fatalities	1	(100%)	(100%)	(100%)
Serious Injury Crashes	3	6:00am - 8:59am 6:00pm - 8:59pm	Thursday	July • June
		(66%)	(67%)	(66%)



House District 76 Distracted Driving-Related Crashes

- | | |
|--|--|
| Interstate Crashes | Non-interstate Crashes |
| ● Fatal | ● Fatal |
| ● Serious Injury | ● Serious Injury |

The blue gradient represents the density of all distracted driving-related crashes.



Available Crash Data - Calendar Year (CY)	CY 2019	CY 2020	CY 2021	CY 2022
Total Crashes	1000	838	903	1000
Fatal Crashes	2	7	6	7
Injury Crashes	258	200	224	230
Distracted Driving-Related Fatal Crashes	0	3	0	1
Percent of Distracted Driving-Related Fatal Crashes to Total Fatal Crashes	0%	43%	0%	14%
Distracted Driving-Related Injury Crashes	41	30	37	35
Percent of Distracted Driving-Related Injury Crashes to Total Injury Crashes	16%	15%	17%	15%