

# Virginia House District 77 Crash Statistics

Report Generated May, 2023

	Count	Highest Time Period(s)	Highest Day(s)	Highest Month(s)
<b>Fatal Crashes</b>	<b>13</b>	6:00am - 8:59am	Saturday • Tuesday	October
<b>Resulting Fatalities</b>	<b>13</b>	Midnight - 2:59am (46%)	(46%)	(23%)
<b>Serious Injury Crashes</b>	<b>57</b>	6:00pm - 8:59pm	Friday	April • January
		9:00pm - 11:59pm (38%)	(25%)	(24%)



### House District 77 Crashes

Interstate Crashes

- Fatal
- Serious Injury

Non-interstate Crashes

- Fatal
- Serious Injury

The blue gradient represents the density of all crashes.

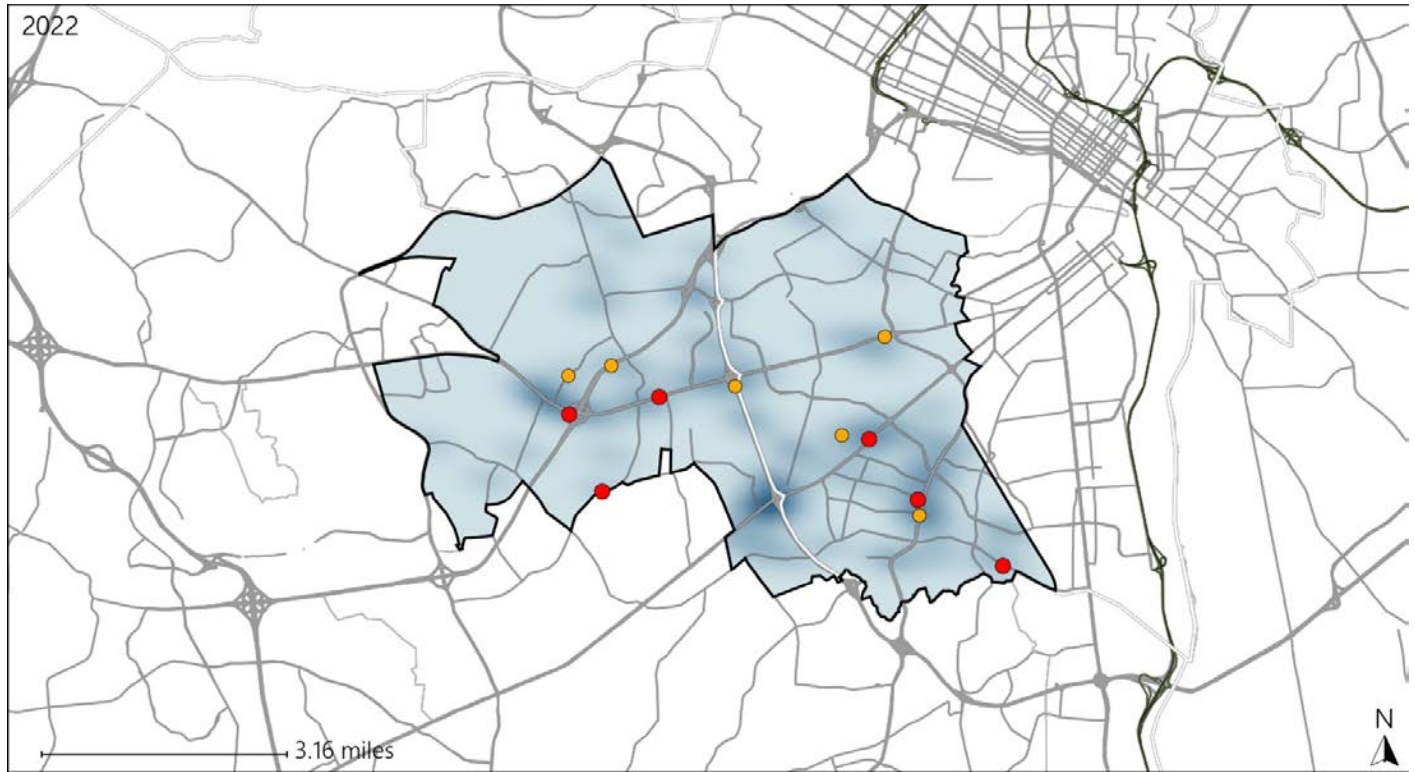


Available Crash Data - Calendar Year (CY)	CY 2019	CY 2020	CY 2021	CY 2022
<b>Total Crashes</b>	<b>1603</b>	<b>1381</b>	<b>1438</b>	<b>1464</b>
<b>Fatal Crashes</b>	<b>7</b>	<b>6</b>	<b>12</b>	<b>13</b>
<b>Injury Crashes</b>	<b>544</b>	<b>435</b>	<b>398</b>	<b>391</b>

# Virginia House District 77 Alcohol Crash Statistics

Report Generated May, 2023

	Count	Highest Time Period(s)	Highest Day(s)	Highest Month(s)
<b>Fatal Crashes</b>	<b>6</b>	<b>Midnight - 2:59am</b>	<b>Saturday</b>	<b>October</b>
<b>Resulting Fatalities</b>	<b>6</b>	(33%)	(50%)	(50%)
<b>Serious Injury Crashes</b>	<b>6</b>	<b>9:00pm - 11:59pm</b>	<b>Friday</b>	<b>April - August</b>
		(33%)	(33%)	(34%)




## House District 77 Alcohol-Related Crashes


Interstate Crashes

Non-interstate Crashes

 Fatal

 Fatal

 Serious Injury

 Serious Injury

The blue gradient represents the density of all alcohol-related crashes.

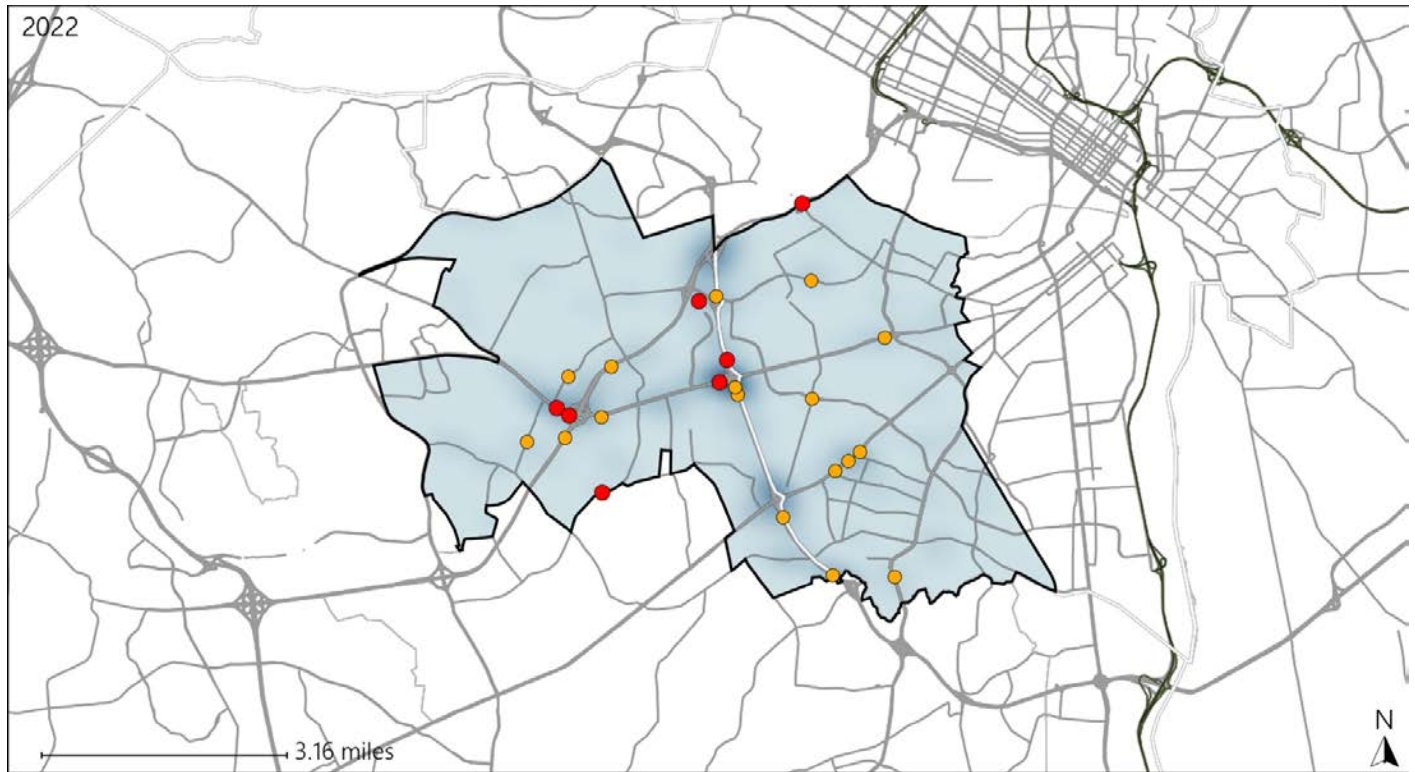


Available Crash Data - Calendar Year (CY)	CY 2019	CY 2020	CY 2021	CY 2022
<b>Total Crashes</b>	<b>1603</b>	<b>1381</b>	<b>1438</b>	<b>1464</b>
<b>Fatal Crashes</b>	<b>7</b>	<b>6</b>	<b>12</b>	<b>13</b>
<b>Injury Crashes</b>	<b>544</b>	<b>435</b>	<b>398</b>	<b>391</b>
<b>Alcohol-Related Fatal Crashes</b>	<b>2</b>	<b>2</b>	<b>2</b>	<b>6</b>
<b>Percent of Alcohol-Related Fatal Crashes to Total Fatal Crashes</b>	<b>29%</b>	<b>33%</b>	<b>17%</b>	<b>46%</b>
<b>Alcohol-Related Injury Crashes</b>	<b>41</b>	<b>29</b>	<b>27</b>	<b>27</b>
<b>Percent of Alcohol-Related Injury Crashes to Total Injury Crashes</b>	<b>8%</b>	<b>7%</b>	<b>7%</b>	<b>7%</b>

# Virginia House District 77 Speed Crash Statistics

Report Generated May, 2023

	Count	Highest Time Period(s)	Highest Day(s)	Highest Month(s)
<b>Fatal Crashes</b>	<b>7</b>	<b>6:00am - 8:59am</b>	<b>Saturday • Tuesday</b>	<b>August • November</b>
<b>Resulting Fatalities</b>	<b>7</b>	(43%)	(58%)	(58%)
<b>Serious Injury Crashes</b>	<b>17</b>	<b>9:00pm - 11:59pm</b> <b>Noon - 2:59pm</b>	<b>Monday</b>	<b>January • May</b>
		(48%)	(29%)	(36%)



## House District 77 Speed-Related Crashes

Interstate Crashes                      Non-interstate Crashes  
 ● Fatal                                      ● Fatal  
 ⊕ Serious Injury                          ⊕ Serious Injury

The blue gradient represents the density of all speed-related crashes.

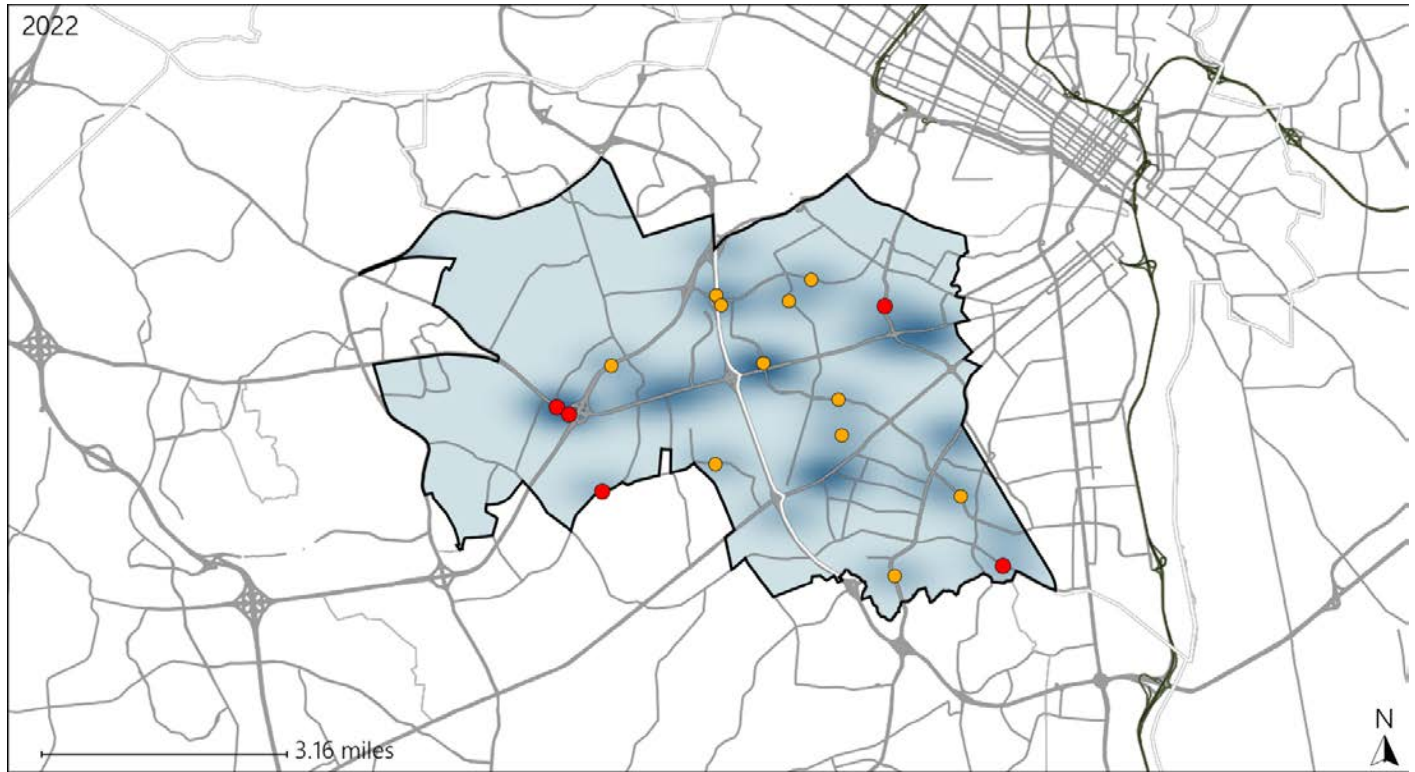


Available Crash Data - Calendar Year (CY)	CY 2019	CY 2020	CY 2021	CY 2022
Total Crashes	1603	1381	1438	1464
Fatal Crashes	7	6	12	13
Injury Crashes	544	435	398	391
Speed-Related Fatal Crashes	0	2	4	7
Percent of Speed-Related Fatal Crashes to Total Fatal Crashes	0%	33%	33%	54%
Speed-Related Injury Crashes	74	56	72	61
Percent of Speed-Related Injury Crashes to Total Injury Crashes	14%	13%	18%	16%

# Virginia House District 77 Unrestrained Crash Statistics

Report Generated May, 2023

	Count	Highest Time Period(s)	Highest Day(s)	Highest Month(s)
<b>Fatal Crashes</b>	<b>5</b>	<b>Midnight - 2:59am</b>	<b>Saturday • Tuesday</b>	<b>August • June</b>
<b>Unrestrained Fatalities</b>	<b>5</b>	(40%)	(80%)	(40%)
<b>Serious Injury Crashes</b>	<b>11</b>	<b>Noon - 2:59pm</b>	<b>Friday • Sunday</b>	<b>January</b>
		(36%)	(54%)	(27%)



## House District 77 Unrestrained-Related Crashes

Interstate Crashes

Non-interstate Crashes

- Fatal
- Serious Injury

- Fatal
- Serious Injury

The blue gradient represents the density of all unrestrained-related crashes.

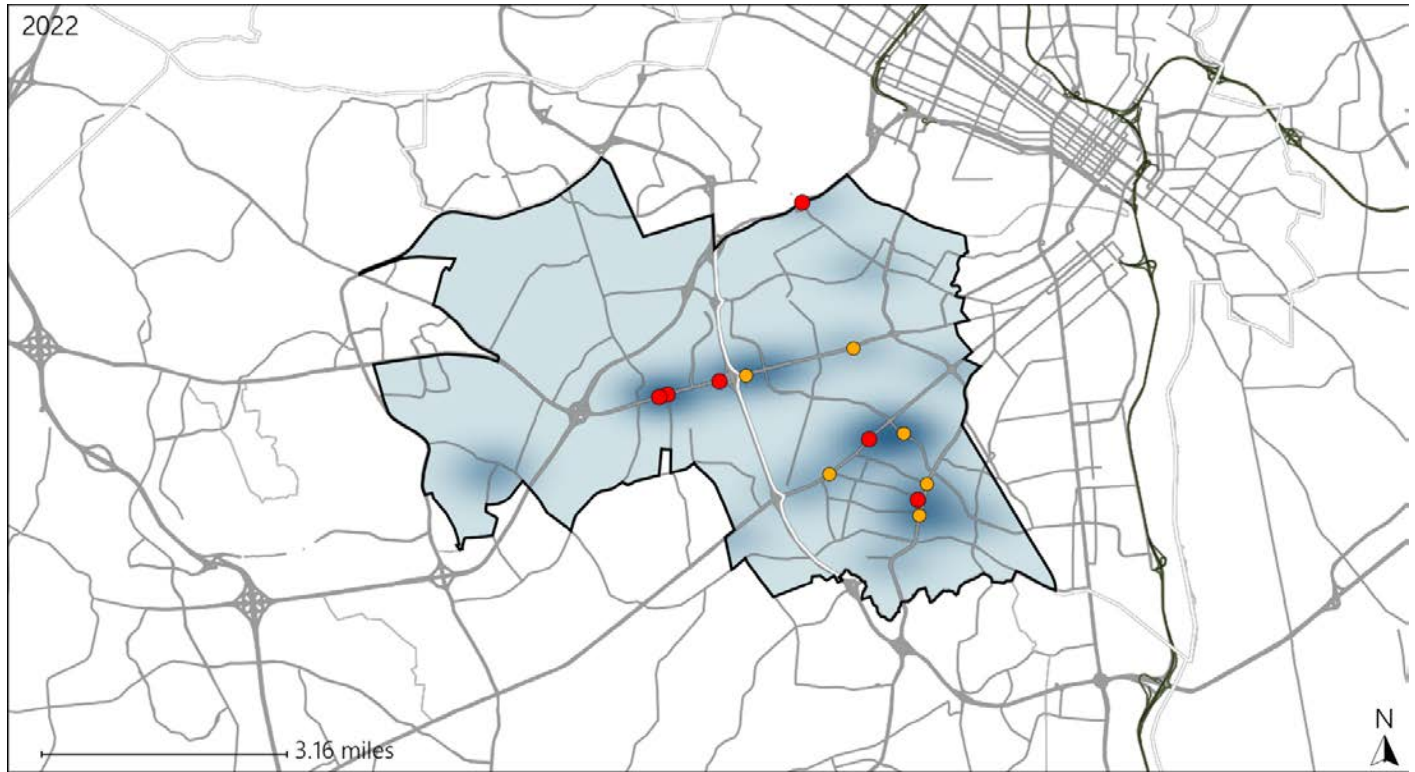


Available Crash Data - Calendar Year (CY)	CY 2019	CY 2020	CY 2021	CY 2022
<b>Total Crashes</b>	<b>1603</b>	<b>1381</b>	<b>1438</b>	<b>1464</b>
<b>Fatalities</b>	<b>7</b>	<b>6</b>	<b>12</b>	<b>13</b>
<b>Injuries</b>	<b>980</b>	<b>730</b>	<b>693</b>	<b>691</b>
<b>Unrestrained Fatalities</b>	<b>2</b>	<b>0</b>	<b>3</b>	<b>5</b>
<b>Percent of Unrestrained Fatalities to Total Fatalities</b>	<b>29%</b>	<b>0%</b>	<b>25%</b>	<b>38%</b>
<b>Unrestrained Injuries</b>	<b>50</b>	<b>40</b>	<b>35</b>	<b>38</b>
<b>Percent of Unrestrained Injuries to Total Injuries</b>	<b>5%</b>	<b>5%</b>	<b>5%</b>	<b>5%</b>

# Virginia House District 77 Pedestrian Crash Statistics

Report Generated May, 2023

	Count	Highest Time Period(s)	Highest Day(s)	Highest Month(s)
<b>Fatal Crashes</b>	<b>6</b>	<b>6:00am - 8:59am</b>	<b>Sunday • Thursday</b>	<b>October</b>
<b>Pedestrian Fatalities</b>	<b>6</b>	(33%)	(66%)	(33%)
<b>Serious Injury Crashes</b>	<b>7</b>	<b>6:00pm - 8:59pm</b>	<b>Friday</b>	<b>April • February</b>
		(57%)	(57%)	(28%)



### House District 77 Pedestrian-Related Crashes

- |                    |                        |
|--------------------|------------------------|
| Interstate Crashes | Non-interstate Crashes |
| Fatal              | Fatal                  |
| Serious Injury     | Serious Injury         |

The blue gradient represents the density of all pedestrian-related crashes.

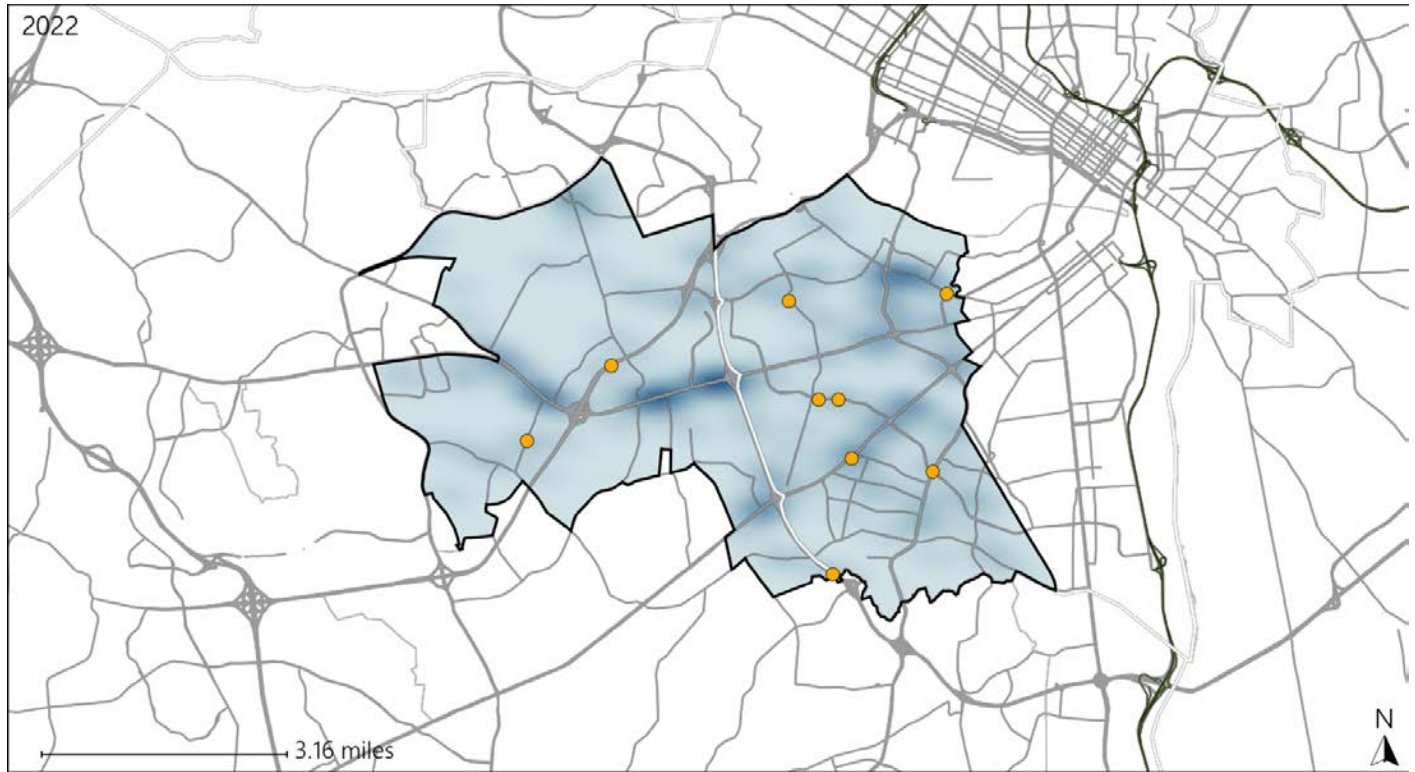


Available Crash Data - Calendar Year (CY)	CY 2019	CY 2020	CY 2021	CY 2022
Total Crashes	1603	1381	1438	1464
Fatal Crashes	7	6	12	13
Injury Crashes	544	435	398	391
Pedestrian-Related Fatal Crashes	2	6	3	6
Percent of Pedestrian-Related Fatal Crashes to Total Fatal Crashes	29%	100%	25%	46%
Pedestrian-Related Injury Crashes	27	18	15	21
Percent of Pedestrian-Related Injury Crashes to Total Injury Crashes	5%	4%	4%	5%

# Virginia House District 77 Distracted Driving Crash Statistics

Report Generated May, 2023

	Count	Highest Time Period(s)	Highest Day(s)	Highest Month(s)
<b>Fatal Crashes</b>	0	-	-	-
<b>Resulting Fatalities</b>	0	-	-	-
<b>Serious Injury Crashes</b>	9	Noon - 2:59pm (33%)	Sunday (33%)	August • March (44%)



## House District 77 Distracted Driving-Related Crashes

- |                    |                        |
|--------------------|------------------------|
| Interstate Crashes | Non-interstate Crashes |
| Fatal              | Fatal                  |
| Serious Injury     | Serious Injury         |

The blue gradient represents the density of all distracted driving-related crashes.



Available Crash Data - Calendar Year (CY)	CY 2019	CY 2020	CY 2021	CY 2022
Total Crashes	1603	1381	1438	1464
Fatal Crashes	7	6	12	13
Injury Crashes	544	435	398	391
Distracted Driving-Related Fatal Crashes	2	0	1	0
Percent of Distracted Driving-Related Fatal Crashes to Total Fatal Crashes	29%	0%	8%	0%
Distracted Driving-Related Injury Crashes	77	76	63	55
Percent of Distracted Driving-Related Injury Crashes to Total Injury Crashes	14%	17%	16%	14%