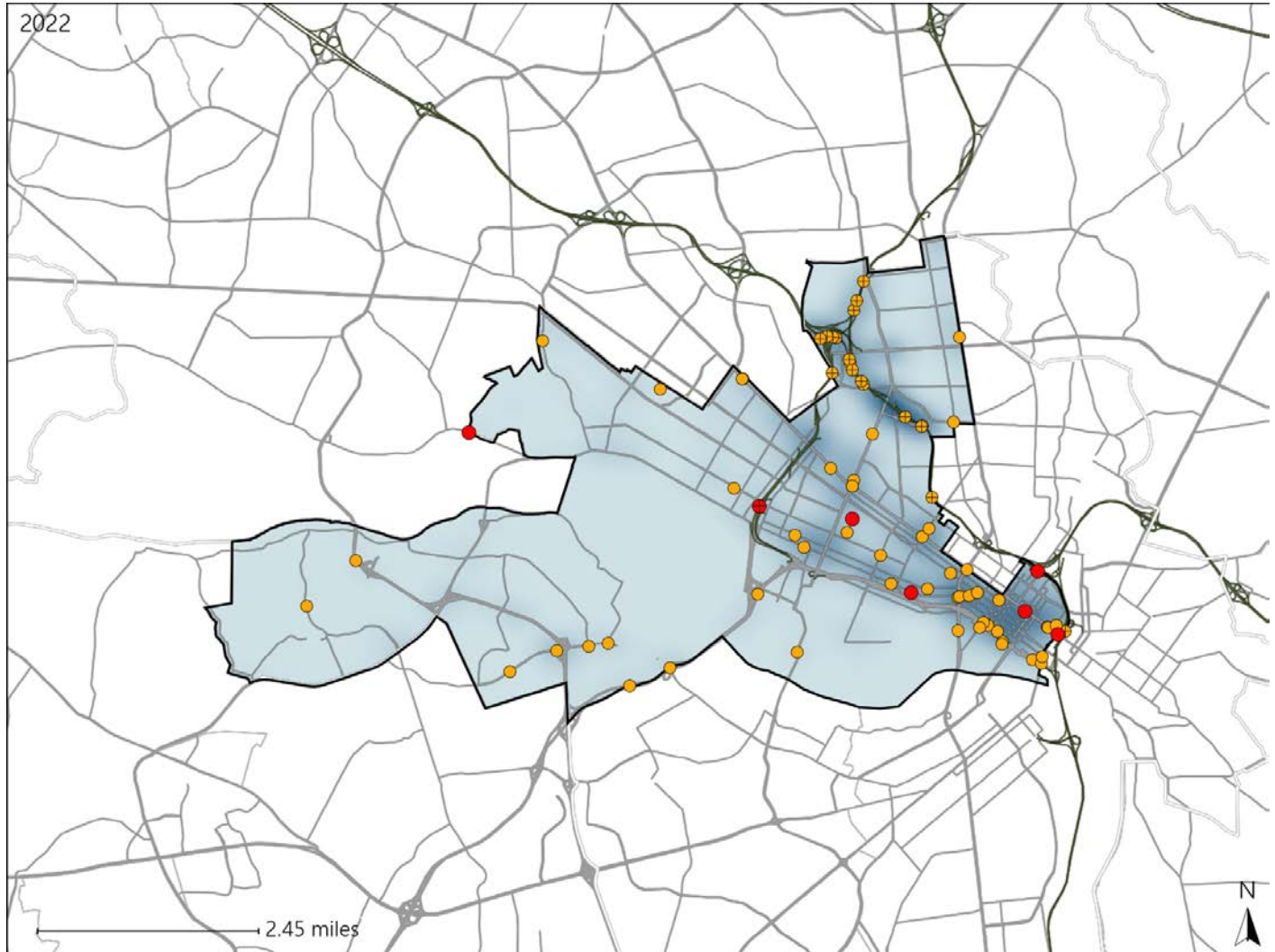


Virginia House District 78 Crash Statistics

Report Generated May, 2023

| | Count | Highest Time Period(s) | Highest Day(s) | Highest Month(s) |
|-------------------------------|-----------|---------------------------------|------------------------|--------------------------|
| Fatal Crashes | 7 | 9:00pm - 11:59pm | Friday | August |
| Resulting Fatalities | 7 | Noon - 2:59pm (58%) | (43%) | (29%) |
| Serious Injury Crashes | 69 | 6:00pm - 8:59pm (23%) | Friday (19%) | February (17%) |



House District 78 Crashes

Interstate Crashes

- Fatal
- Serious Injury

Non-interstate Crashes

- Fatal
- Serious Injury

The blue gradient represents the density of all crashes.

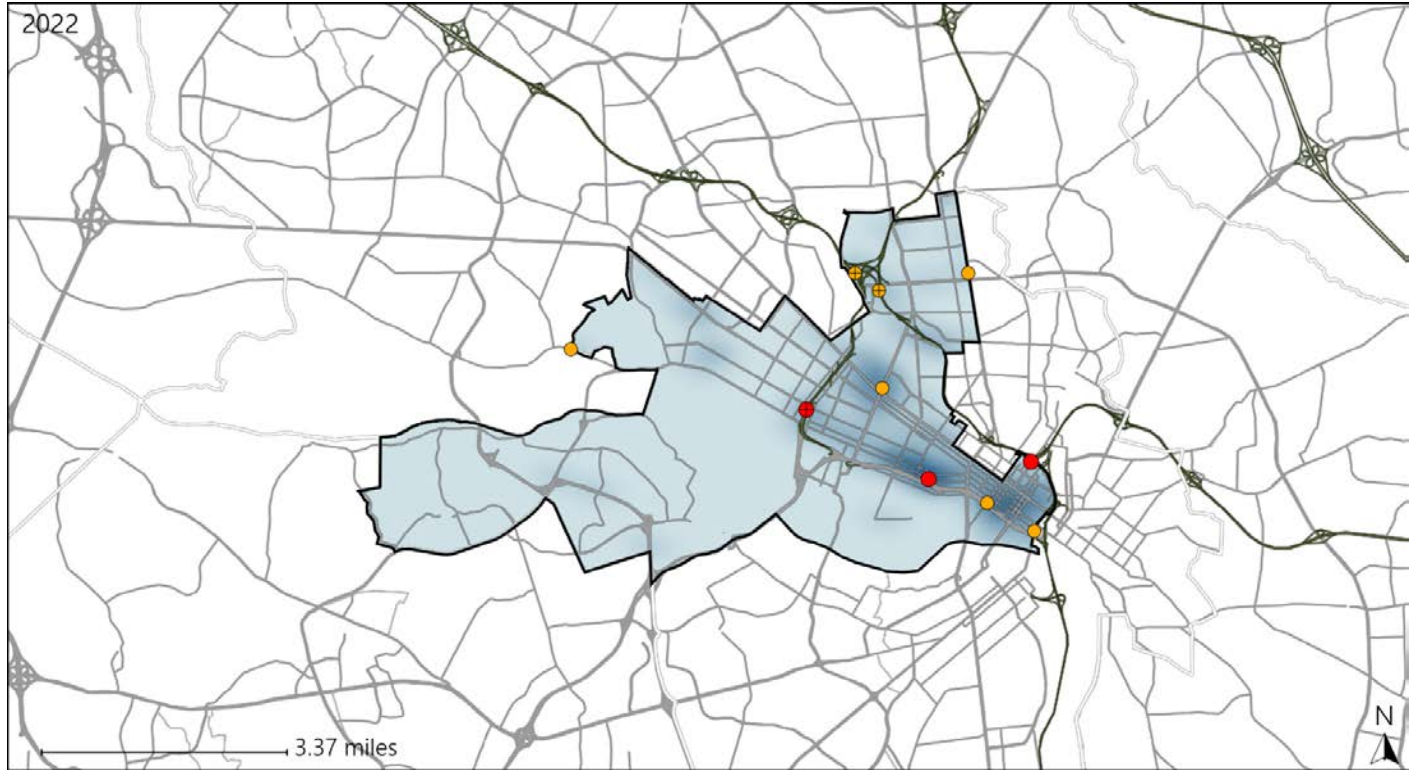


| Available Crash Data - Calendar Year (CY) | CY 2019 | CY 2020 | CY 2021 | CY 2022 |
|---|---------|---------|---------|---------|
| Total Crashes | 2759 | 1873 | 2236 | 2257 |
| Fatal Crashes | 4 | 7 | 4 | 7 |
| Injury Crashes | 701 | 468 | 535 | 570 |

Virginia House District 78 Alcohol Crash Statistics

Report Generated May, 2023

| | Count | Highest Time Period(s) | Highest Day(s) | Highest Month(s) |
|-------------------------------|----------|-------------------------|--------------------------|------------------|
| Fatal Crashes | 3 | 9:00pm - 11:59pm | Friday • Saturday | August |
| Resulting Fatalities | 3 | (67%) | (66%) | (67%) |
| Serious Injury Crashes | 7 | 9:00pm - 11:59pm | Sunday | April |
| | | (43%) | (29%) | (43%) |



House District 78 Alcohol-Related Crashes

Interstate Crashes

Non-interstate Crashes

- Fatal
- Serious Injury

- Fatal
- Serious Injury

The blue gradient represents the density of all alcohol-related crashes.

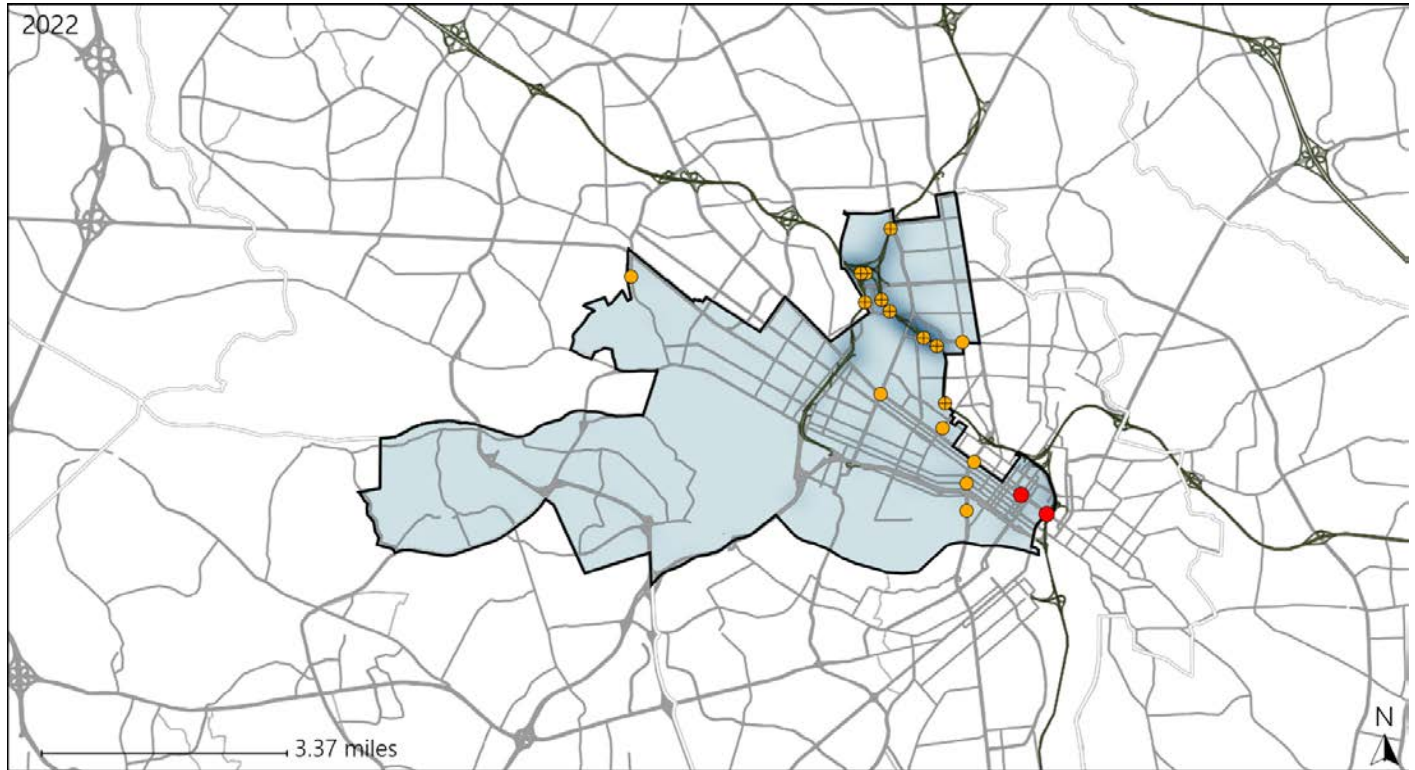


| Available Crash Data - Calendar Year (CY) | CY 2019 | CY 2020 | CY 2021 | CY 2022 |
|---|---------|---------|---------|---------|
| Total Crashes | 2759 | 1873 | 2236 | 2257 |
| Fatal Crashes | 4 | 7 | 4 | 7 |
| Injury Crashes | 701 | 468 | 535 | 570 |
| Alcohol-Related Fatal Crashes | 1 | 3 | 1 | 3 |
| Percent of Alcohol-Related Fatal Crashes to Total Fatal Crashes | 25% | 43% | 25% | 43% |
| Alcohol-Related Injury Crashes | 34 | 18 | 23 | 34 |
| Percent of Alcohol-Related Injury Crashes to Total Injury Crashes | 5% | 4% | 4% | 6% |

Virginia House District 78 Speed Crash Statistics

Report Generated May, 2023

| | Count | Highest Time Period(s) | Highest Day(s) | Highest Month(s) |
|-------------------------------|-----------|---------------------------------|--------------------------|--------------------------|
| Fatal Crashes | 2 | 6:00am - 8:59am | Friday • Saturday | March • May |
| Resulting Fatalities | 2 | Noon - 2:59pm (100%) | (100%) | (100%) |
| Serious Injury Crashes | 16 | 3:00pm - 5:59pm (31%) | Monday (31%) | December (44%) |



House District 78 Speed-Related Crashes

Interstate Crashes Non-interstate Crashes
 ● Fatal ● Fatal
 ⊕ Serious Injury ⊕ Serious Injury

The blue gradient represents the density of all speed-related crashes.

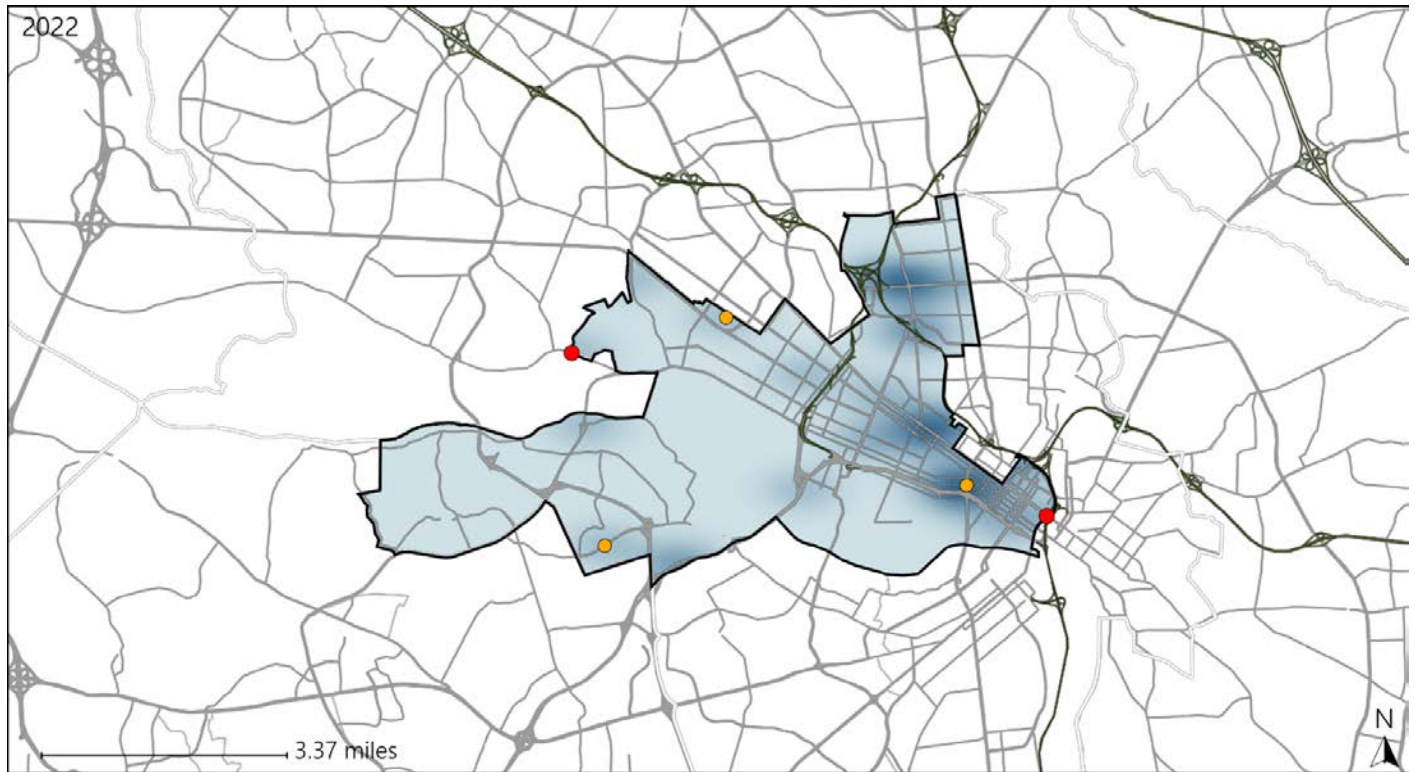


| Available Crash Data - Calendar Year (CY) | CY 2019 | CY 2020 | CY 2021 | CY 2022 |
|---|---------|---------|---------|---------|
| Total Crashes | 2759 | 1873 | 2236 | 2257 |
| Fatal Crashes | 4 | 7 | 4 | 7 |
| Injury Crashes | 701 | 468 | 535 | 570 |
| Speed-Related Fatal Crashes | 2 | 4 | 2 | 2 |
| Percent of Speed-Related Fatal Crashes to Total Fatal Crashes | 50% | 57% | 50% | 29% |
| Speed-Related Injury Crashes | 91 | 82 | 88 | 95 |
| Percent of Speed-Related Injury Crashes to Total Injury Crashes | 13% | 18% | 16% | 17% |

Virginia House District 78 Unrestrained Crash Statistics

Report Generated May, 2023

| | Count | Highest Time Period(s) | Highest Day(s) | Highest Month(s) |
|--------------------------------|----------|---|--------------------------|-------------------------|
| Fatal Crashes | 2 | Noon - 2:59pm | Friday • Saturday | June • March |
| Unrestrained Fatalities | 2 | (100%) | (100%) | (100%) |
| Serious Injury Crashes | 3 | 6:00pm - 8:59pm 9:00am - 11:59am | Thursday | December • March |
| | | (66%) | (67%) | (66%) |



House District 78 Unrestrained-Related Crashes

- | | |
|--------------------|------------------------|
| Interstate Crashes | Non-interstate Crashes |
| ● Fatal | ● Fatal |
| ⊕ Serious Injury | ⊕ Serious Injury |

The blue gradient represents the density of all unrestrained-related crashes.

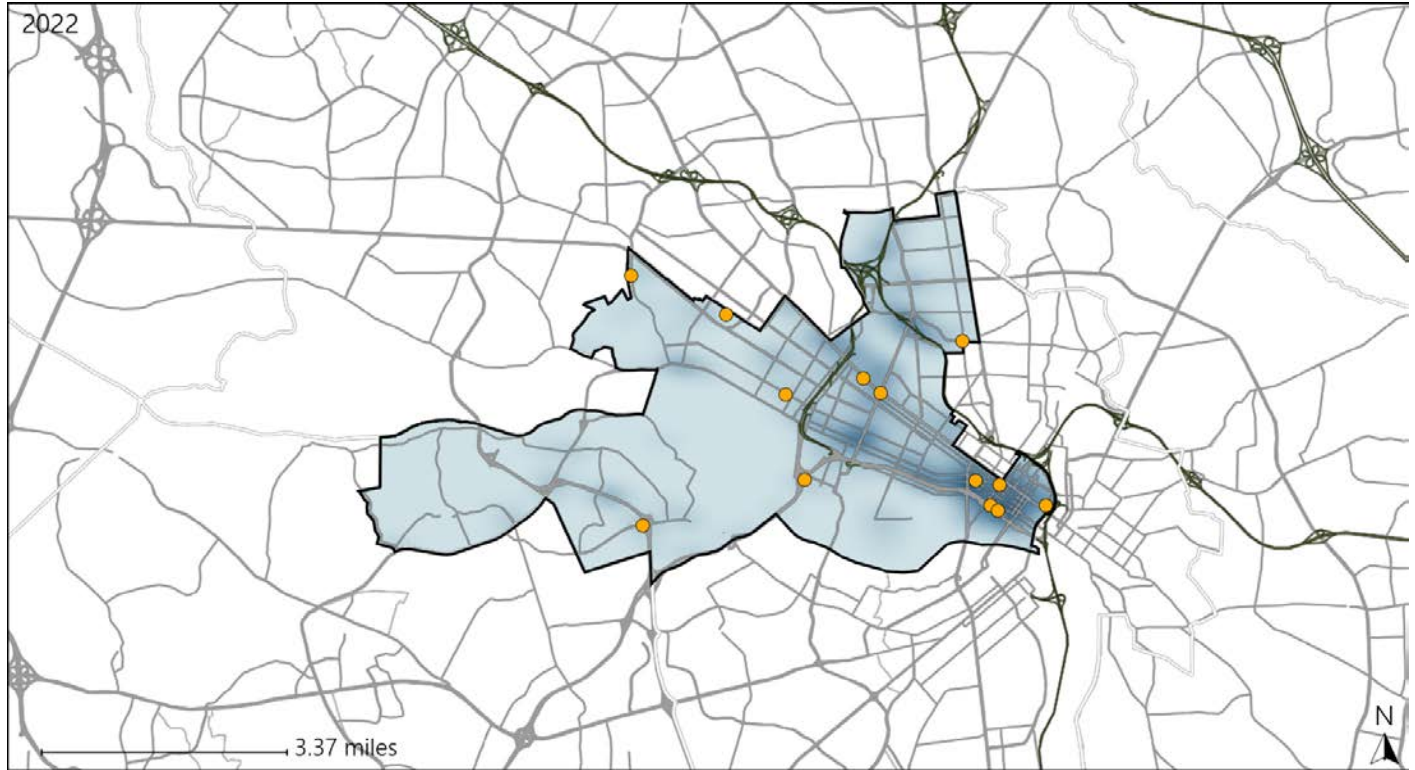


| Available Crash Data - Calendar Year (CY) | CY 2019 | CY 2020 | CY 2021 | CY 2022 |
|---|-------------|-------------|-------------|-------------|
| Total Crashes | 2759 | 1873 | 2236 | 2257 |
| Fatalities | 4 | 8 | 4 | 7 |
| Injuries | 1079 | 759 | 864 | 898 |
| Unrestrained Fatalities | 2 | 5 | 1 | 2 |
| Percent of Unrestrained Fatalities to Total Fatalities | 50% | 63% | 25% | 29% |
| Unrestrained Injuries | 29 | 44 | 41 | 32 |
| Percent of Unrestrained Injuries to Total Injuries | 3% | 6% | 5% | 4% |

Virginia House District 78 Distracted Driving Crash Statistics

Report Generated May, 2023

| | Count | Highest Time Period(s) | Highest Day(s) | Highest Month(s) |
|-------------------------------|-----------|---------------------------------|---------------------------|---------------------------------|
| Fatal Crashes | 0 | - | - | - |
| Resulting Fatalities | 0 | - | - | - |
| Serious Injury Crashes | 13 | 6:00pm - 8:59pm (31%) | Wednesday (38%) | July • November (46%) |



House District 78 Distracted Driving-Related Crashes

- | | |
|--------------------|------------------------|
| Interstate Crashes | Non-interstate Crashes |
| Fatal | Fatal |
| Serious Injury | Serious Injury |

The blue gradient represents the density of all distracted driving-related crashes.



| Available Crash Data - Calendar Year (CY) | CY 2019 | CY 2020 | CY 2021 | CY 2022 |
|--|---------|---------|---------|---------|
| Total Crashes | 2759 | 1873 | 2236 | 2257 |
| Fatal Crashes | 4 | 7 | 4 | 7 |
| Injury Crashes | 701 | 468 | 535 | 570 |
| Distracted Driving-Related Fatal Crashes | 0 | 1 | 0 | 0 |
| Percent of Distracted Driving-Related Fatal Crashes to Total Fatal Crashes | 0% | 14% | 0% | 0% |
| Distracted Driving-Related Injury Crashes | 111 | 88 | 111 | 94 |
| Percent of Distracted Driving-Related Injury Crashes to Total Injury Crashes | 16% | 19% | 21% | 16% |