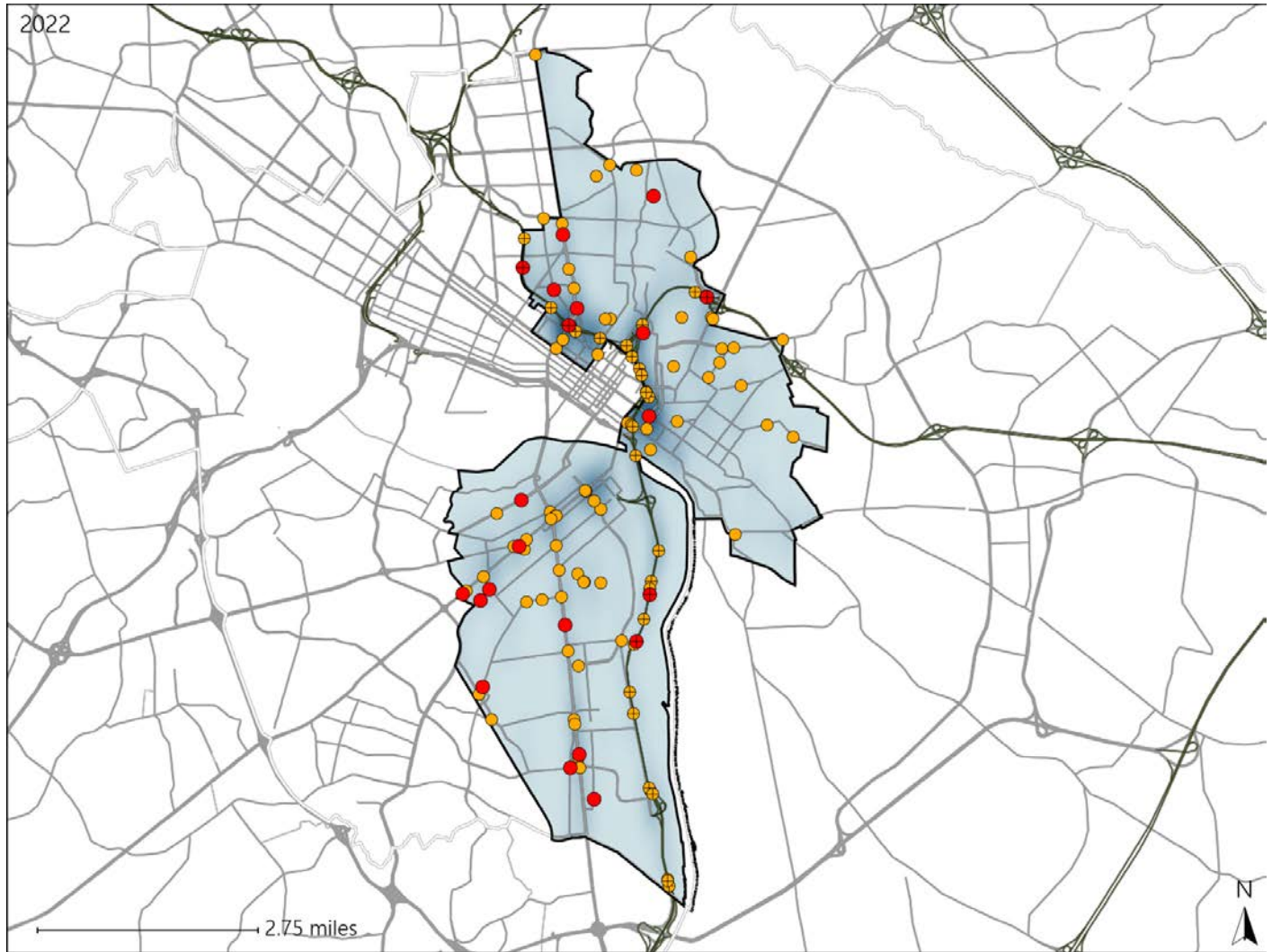


# Virginia House District 79 Crash Statistics

Report Generated May, 2023

	Count	Highest Time Period(s)	Highest Day(s)	Highest Month(s)
<b>Fatal Crashes</b>	<b>21</b>	<b>3:00pm - 5:59pm</b>	<b>Saturday</b>	<b>November - October</b>
<b>Resulting Fatalities</b>	<b>22</b>	(33%)	(29%)	(38%)
<b>Serious Injury Crashes</b>	<b>98</b>	<b>3:00pm - 5:59pm</b>	<b>Saturday</b>	<b>July</b>
		(20%)	(23%)	(13%)



## House District 79 Crashes

Interstate Crashes

- Fatal
- Serious Injury

Non-interstate Crashes

- Fatal
- Serious Injury

The blue gradient represents the density of all crashes.



Available Crash Data - Calendar Year (CY)	CY 2019	CY 2020	CY 2021	CY 2022
<b>Total Crashes</b>	<b>2689</b>	<b>2434</b>	<b>2660</b>	<b>2727</b>
<b>Fatal Crashes</b>	<b>5</b>	<b>14</b>	<b>6</b>	<b>21</b>
<b>Injury Crashes</b>	<b>925</b>	<b>758</b>	<b>805</b>	<b>810</b>

# Virginia House District 79 Alcohol Crash Statistics

Report Generated May, 2023

	Count	Highest Time Period(s)	Highest Day(s)	Highest Month(s)
<b>Fatal Crashes</b>	<b>4</b>	3:00pm - 5:59pm	<b>Friday</b>	<b>December - March</b>
<b>Resulting Fatalities</b>	<b>4</b>	9:00pm - 11:59pm (100%)	(50%)	(50%)
<b>Serious Injury Crashes</b>	<b>13</b>	3:00pm - 5:59pm 6:00pm - 8:59pm (46%)	<b>Sunday</b> (31%)	<b>November - September</b> (46%)



### House District 79 Alcohol-Related Crashes

Interstate Crashes                      Non-interstate Crashes  
 ● Fatal                                      ● Fatal  
 ⊕ Serious Injury                          ⊕ Serious Injury

The blue gradient represents the density of all alcohol-related crashes.

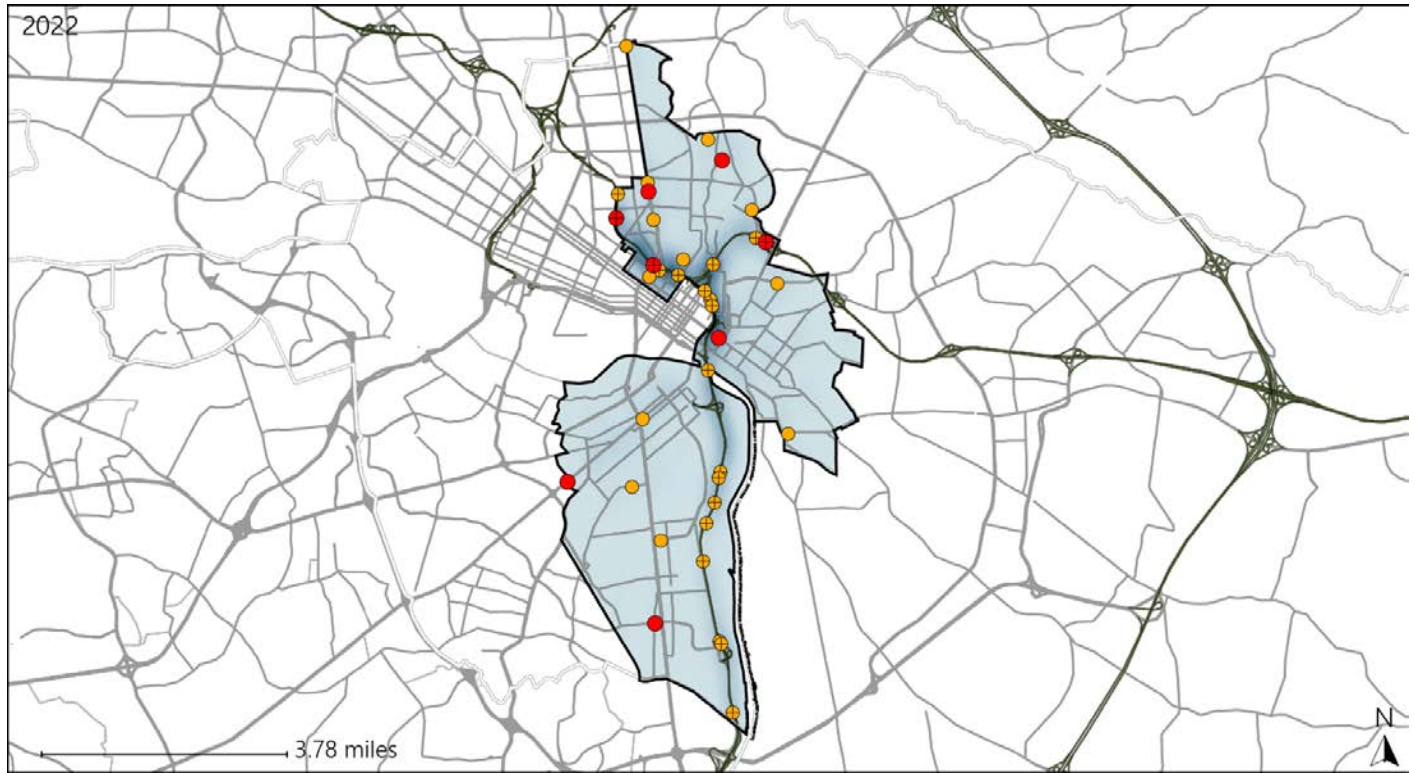


Available Crash Data - Calendar Year (CY)	CY 2019	CY 2020	CY 2021	CY 2022
<b>Total Crashes</b>	<b>2689</b>	<b>2434</b>	<b>2660</b>	<b>2727</b>
<b>Fatal Crashes</b>	<b>5</b>	<b>14</b>	<b>6</b>	<b>21</b>
<b>Injury Crashes</b>	<b>925</b>	<b>758</b>	<b>805</b>	<b>810</b>
<b>Alcohol-Related Fatal Crashes</b>	<b>2</b>	<b>5</b>	<b>1</b>	<b>4</b>
<b>Percent of Alcohol-Related Fatal Crashes to Total Fatal Crashes</b>	<b>40%</b>	<b>36%</b>	<b>17%</b>	<b>19%</b>
<b>Alcohol-Related Injury Crashes</b>	<b>58</b>	<b>36</b>	<b>43</b>	<b>40</b>
<b>Percent of Alcohol-Related Injury Crashes to Total Injury Crashes</b>	<b>6%</b>	<b>5%</b>	<b>5%</b>	<b>5%</b>

# Virginia House District 79 Speed Crash Statistics

Report Generated May, 2023

	Count	Highest Time Period(s)	Highest Day(s)	Highest Month(s)
<b>Fatal Crashes</b>	<b>8</b>	3:00pm - 5:59pm	Wednesday	May • October
<b>Resulting Fatalities</b>	<b>9</b>	6:00am - 8:59am (50%)	(38%)	(50%)
<b>Serious Injury Crashes</b>	<b>29</b>	9:00am - 11:59am Midnight - 2:59am (34%)	Saturday (28%)	June (24%)



### House District 79 Speed-Related Crashes

Interstate Crashes                      Non-interstate Crashes  
 ● Fatal                                      ● Fatal  
 ⊕ Serious Injury                          ⊕ Serious Injury

The blue gradient represents the density of all speed-related crashes.

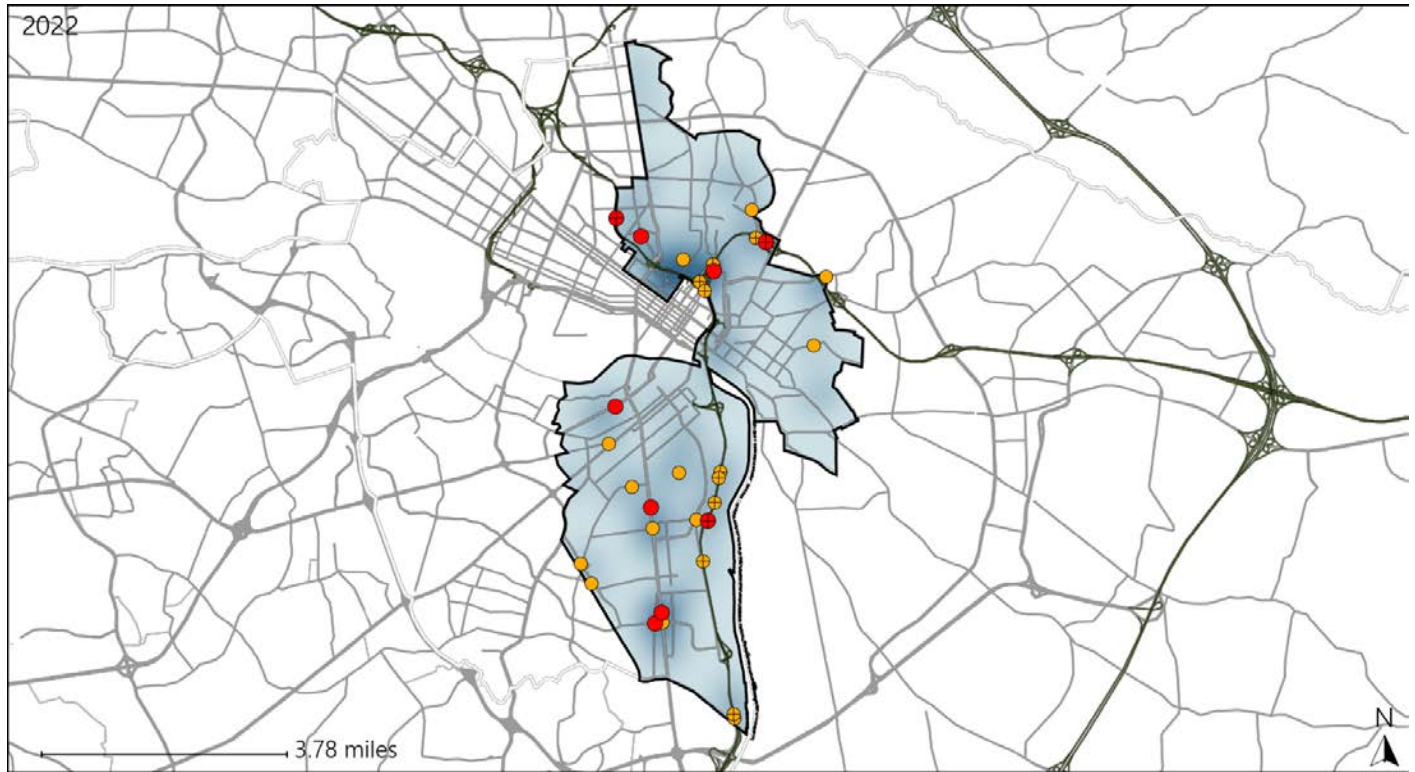


Available Crash Data - Calendar Year (CY)	CY 2019	CY 2020	CY 2021	CY 2022
Total Crashes	2689	2434	2660	2727
Fatal Crashes	5	14	6	21
Injury Crashes	925	758	805	810
Speed-Related Fatal Crashes	3	5	2	8
Percent of Speed-Related Fatal Crashes to Total Fatal Crashes	60%	36%	33%	38%
Speed-Related Injury Crashes	139	118	152	174
Percent of Speed-Related Injury Crashes to Total Injury Crashes	15%	16%	19%	21%

# Virginia House District 79 Unrestrained Crash Statistics

Report Generated May, 2023

	Count	Highest Time Period(s)	Highest Day(s)	Highest Month(s)
<b>Fatal Crashes</b>	<b>9</b>	<b>3:00pm - 5:59pm</b>	<b>Saturday</b>	<b>November</b>
<b>Unrestrained Fatalities</b>	<b>10</b>	(33%)	(44%)	(33%)
<b>Serious Injury Crashes</b>	<b>23</b>	<b>9:00am - 11:59am</b>	<b>Saturday • Wednesday</b>	<b>February • January</b>
		(22%)	(52%)	(26%)



## House District 79 Unrestrained-Related Crashes

Interstate Crashes

- Fatal
- Serious Injury

Non-interstate Crashes

- Fatal
- Serious Injury

The blue gradient represents the density of all unrestrained-related crashes.



Available Crash Data - Calendar Year (CY)	CY 2019	CY 2020	CY 2021	CY 2022
<b>Total Crashes</b>	<b>2689</b>	<b>2434</b>	<b>2660</b>	<b>2727</b>
<b>Fatalities</b>	<b>7</b>	<b>14</b>	<b>6</b>	<b>22</b>
<b>Injuries</b>	<b>1515</b>	<b>1235</b>	<b>1382</b>	<b>1370</b>
<b>Unrestrained Fatalities</b>	<b>2</b>	<b>6</b>	<b>2</b>	<b>10</b>
<b>Percent of Unrestrained Fatalities to Total Fatalities</b>	<b>29%</b>	<b>43%</b>	<b>33%</b>	<b>45%</b>
<b>Unrestrained Injuries</b>	<b>109</b>	<b>85</b>	<b>82</b>	<b>91</b>
<b>Percent of Unrestrained Injuries to Total Injuries</b>	<b>7%</b>	<b>7%</b>	<b>6%</b>	<b>7%</b>

# Virginia House District 79 Distracted Driving Crash Statistics

Report Generated May, 2023

	Count	Highest Time Period(s)	Highest Day(s)	Highest Month(s)
<b>Fatal Crashes</b>	0	-	-	-
<b>Resulting Fatalities</b>	0	-	-	-
<b>Serious Injury Crashes</b>	16	9:00am - 11:59am (25%)	Saturday (38%)	August (19%)



## House District 79 Distracted Driving-Related Crashes

- |                    |                        |
|--------------------|------------------------|
| Interstate Crashes | Non-interstate Crashes |
| Fatal              | Fatal                  |
| Serious Injury     | Serious Injury         |

The blue gradient represents the density of all distracted driving-related crashes.



Available Crash Data - Calendar Year (CY)	CY 2019	CY 2020	CY 2021	CY 2022
Total Crashes	2689	2434	2660	2727
Fatal Crashes	5	14	6	21
Injury Crashes	925	758	805	810
Distracted Driving-Related Fatal Crashes	1	2	2	0
Percent of Distracted Driving-Related Fatal Crashes to Total Fatal Crashes	20%	14%	33%	0%
Distracted Driving-Related Injury Crashes	175	137	141	145
Percent of Distracted Driving-Related Injury Crashes to Total Injury Crashes	19%	18%	18%	18%