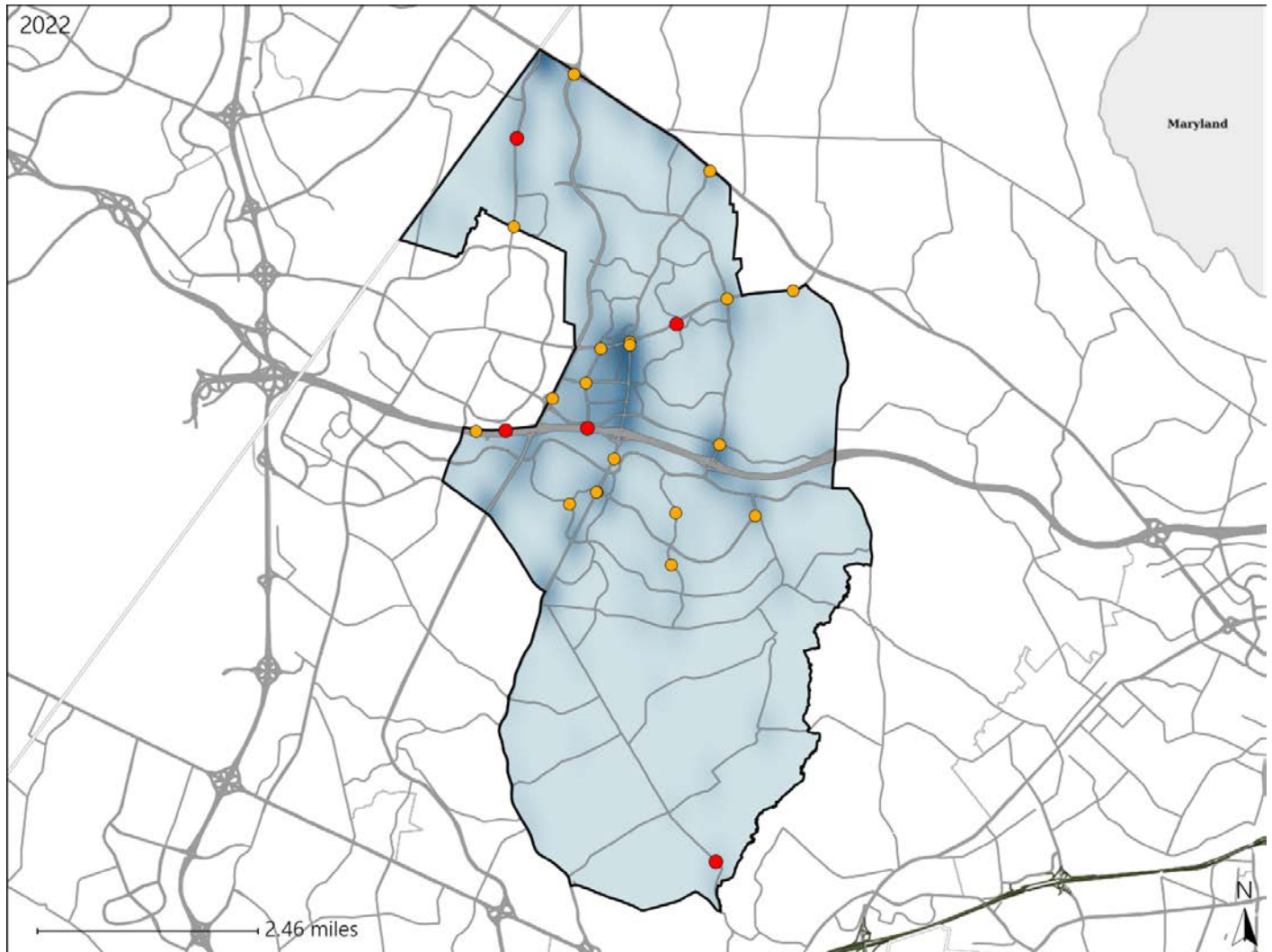


# Virginia House District 7 Crash Statistics

Report Generated May, 2023

	Count	Highest Time Period(s)	Highest Day(s)	Highest Month(s)
<b>Fatal Crashes</b>	<b>5</b>	<b>9:00pm - 11:59pm</b>	<b>Sunday</b>	<b>August</b>
<b>Resulting Fatalities</b>	<b>5</b>	(60%)	(40%)	(40%)
<b>Serious Injury Crashes</b>	<b>19</b>	<b>3:00pm - 5:59pm</b> <b>6:00pm - 8:59pm</b>	<b>Monday</b>	<b>April - September</b>
		(42%)	(21%)	(32%)



### House District 7 Crashes

Interstate Crashes

- Fatal
- Serious Injury

Non-interstate Crashes

- Fatal
- Serious Injury

The blue gradient represents the density of all crashes.

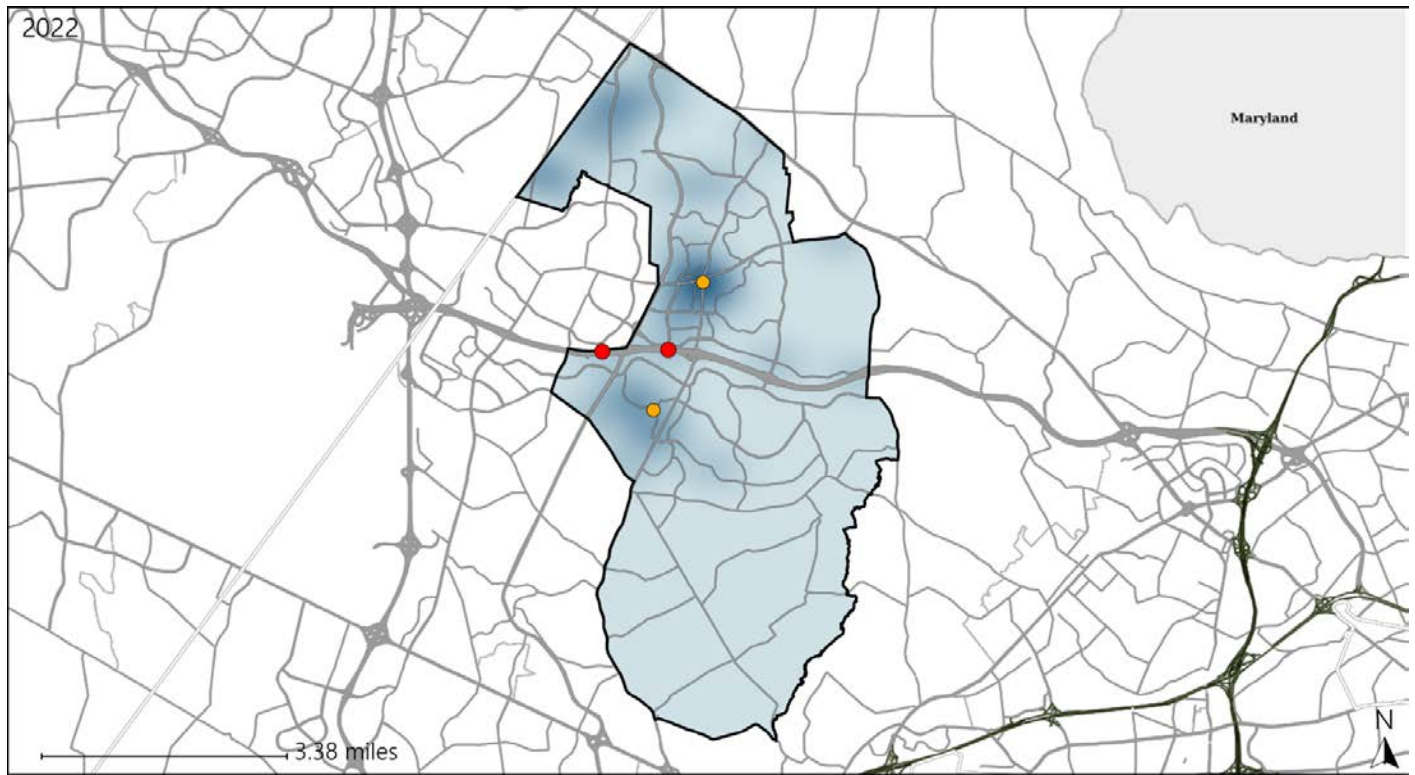


Available Crash Data - Calendar Year (CY)	CY 2019	CY 2020	CY 2021	CY 2022
Total Crashes	656	362	372	478
Fatal Crashes	1	1	2	5
Injury Crashes	184	111	105	153

# Virginia House District 7 Alcohol Crash Statistics

Report Generated May, 2023

	Count	Highest Time Period(s)	Highest Day(s)	Highest Month(s)
<b>Fatal Crashes</b>	<b>2</b>	6:00pm - 8:59pm	Tuesday • Wednesday	August • July
<b>Resulting Fatalities</b>	<b>2</b>	9:00pm - 11:59pm (100%)	(100%)	(100%)
<b>Serious Injury Crashes</b>	<b>2</b>	Midnight - 2:59am Noon - 2:59pm (100%)	Monday • Sunday (100%)	August • November (100%)



### House District 7 Alcohol-Related Crashes

Interstate Crashes                      Non-interstate Crashes  
 ● Fatal                                      ● Fatal  
 ⊕ Serious Injury                          ⊕ Serious Injury

The blue gradient represents the density of all alcohol-related crashes.

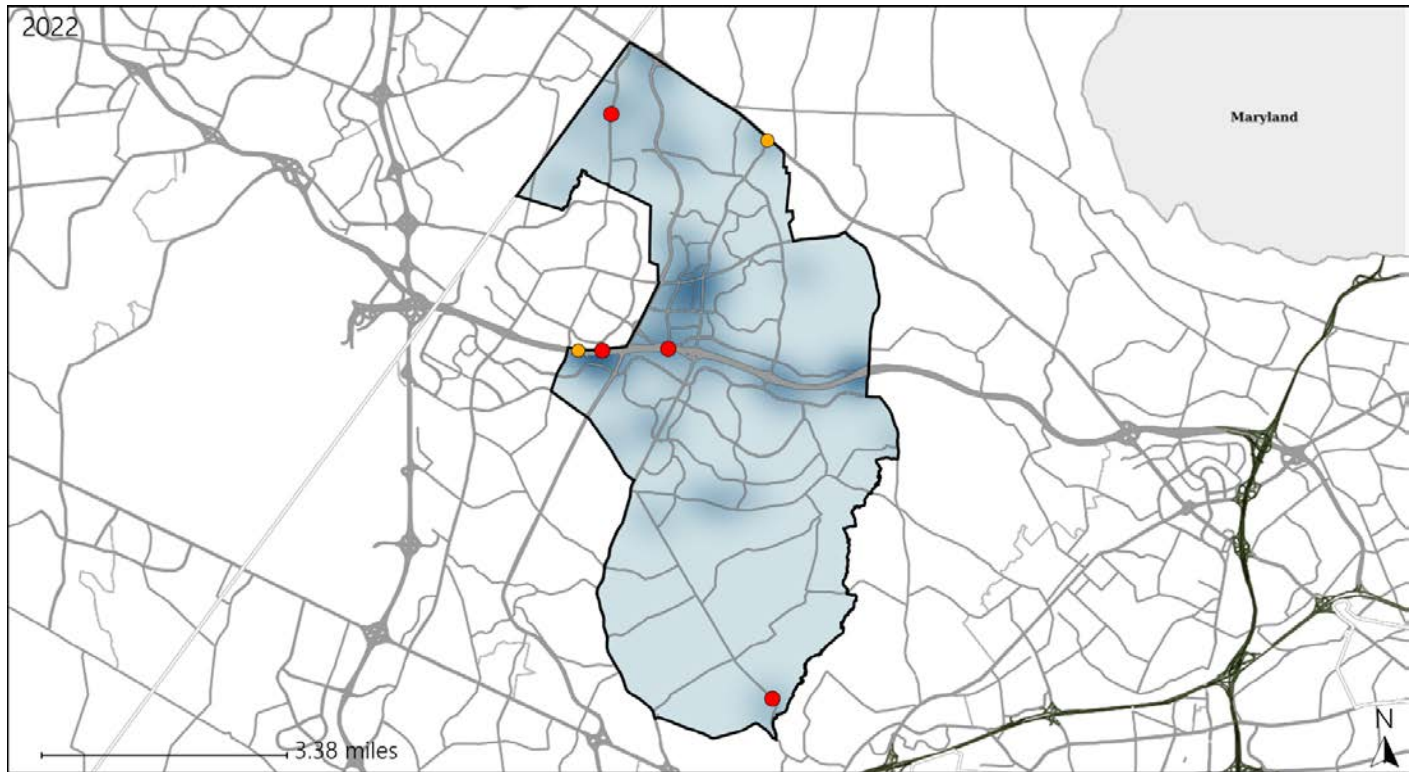


Available Crash Data - Calendar Year (CY)	CY 2019	CY 2020	CY 2021	CY 2022
Total Crashes	656	362	372	478
Fatal Crashes	1	1	2	5
Injury Crashes	184	111	105	153
Alcohol-Related Fatal Crashes	0	1	1	2
Percent of Alcohol-Related Fatal Crashes to Total Fatal Crashes	0%	100%	50%	40%
Alcohol-Related Injury Crashes	19	9	8	14
Percent of Alcohol-Related Injury Crashes to Total Injury Crashes	10%	8%	8%	9%

# Virginia House District 7 Speed Crash Statistics

Report Generated May, 2023

	Count	Highest Time Period(s)	Highest Day(s)	Highest Month(s)
<b>Fatal Crashes</b>	<b>4</b>	<b>9:00pm - 11:59pm</b>	<b>Sunday</b>	<b>August</b>
<b>Resulting Fatalities</b>	<b>4</b>	(75%)	(50%)	(50%)
<b>Serious Injury Crashes</b>	<b>2</b>	<b>6:00pm - 8:59pm</b> <b>9:00pm - 11:59pm</b>	<b>Tuesday</b>	<b>April - September</b>
		(100%)	(100%)	(100%)



## House District 7 Speed-Related Crashes

Interstate Crashes

Non-interstate Crashes

- Fatal
- Serious Injury

- Fatal
- Serious Injury

The blue gradient represents the density of all speed-related crashes.

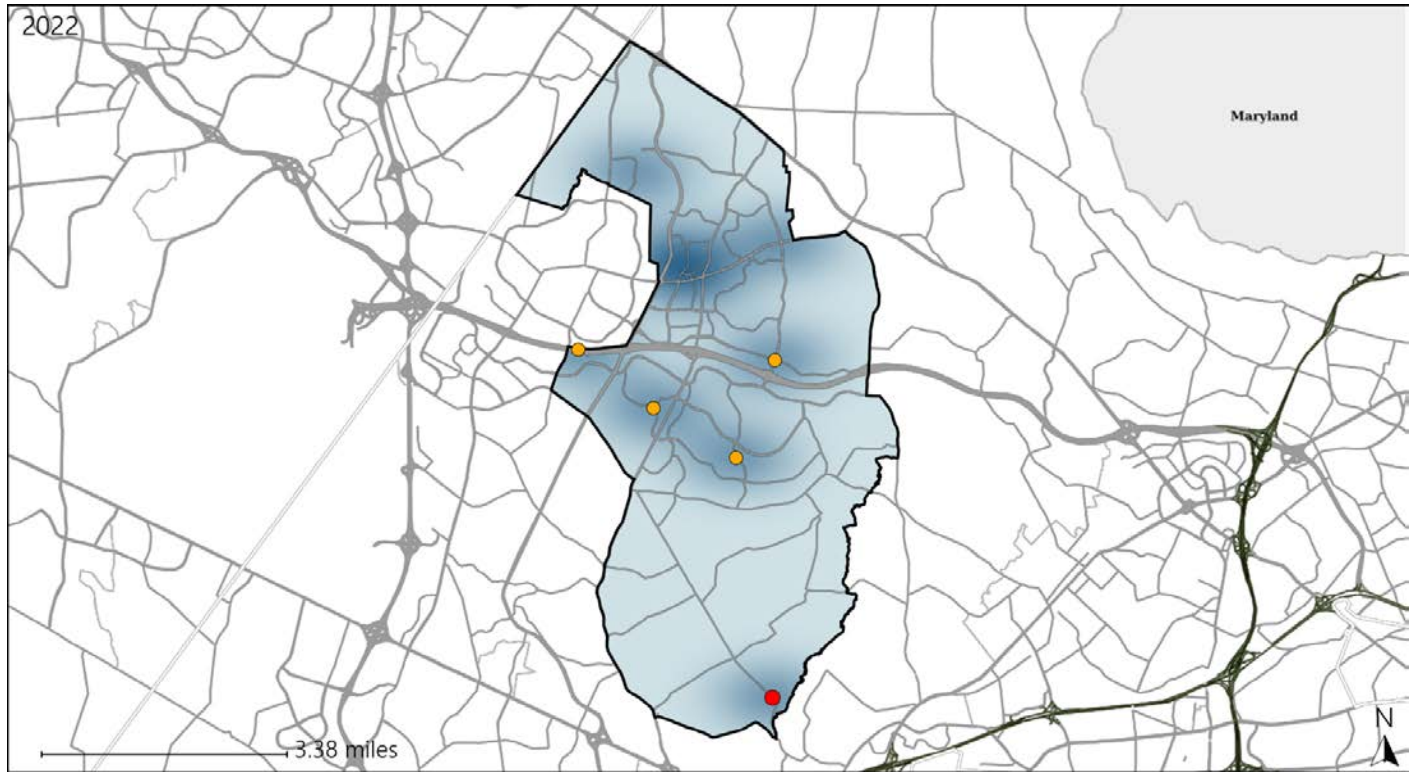


Available Crash Data - Calendar Year (CY)	CY 2019	CY 2020	CY 2021	CY 2022
Total Crashes	656	362	372	478
Fatal Crashes	1	1	2	5
Injury Crashes	184	111	105	153
Speed-Related Fatal Crashes	1	0	1	4
Percent of Speed-Related Fatal Crashes to Total Fatal Crashes	100%	0%	50%	80%
Speed-Related Injury Crashes	21	12	16	18
Percent of Speed-Related Injury Crashes to Total Injury Crashes	11%	11%	15%	12%

# Virginia House District 7 Unrestrained Crash Statistics

Report Generated May, 2023

	Count	Highest Time Period(s)	Highest Day(s)	Highest Month(s)
<b>Fatal Crashes</b>	<b>1</b>	<b>9:00pm - 11:59pm</b>	<b>Sunday</b>	<b>June</b>
<b>Unrestrained Fatalities</b>	<b>1</b>	(100%)	(100%)	(100%)
<b>Serious Injury Crashes</b>	<b>4</b>	<b>Noon - 2:59pm</b>	<b>Friday • Monday</b>	<b>August • May</b>
		(50%)	(50%)	(50%)



## House District 7 Unrestrained-Related Crashes

Interstate Crashes

Non-interstate Crashes

- Fatal
- Serious Injury

- Fatal
- Serious Injury

The blue gradient represents the density of all unrestrained-related crashes.

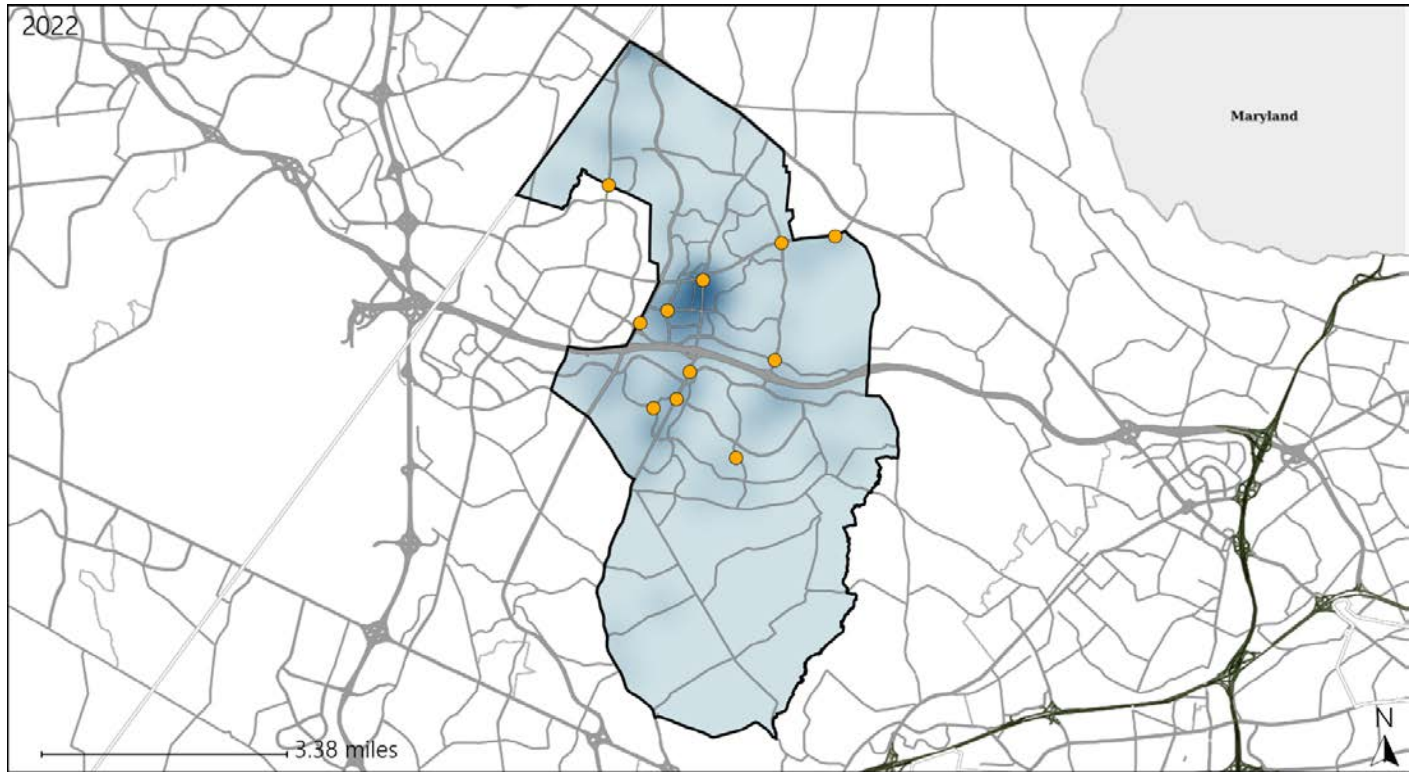


Available Crash Data - Calendar Year (CY)	CY 2019	CY 2020	CY 2021	CY 2022
<b>Total Crashes</b>	<b>656</b>	<b>362</b>	<b>372</b>	<b>478</b>
<b>Fatalities</b>	<b>1</b>	<b>1</b>	<b>2</b>	<b>5</b>
<b>Injuries</b>	<b>288</b>	<b>179</b>	<b>156</b>	<b>250</b>
<b>Unrestrained Fatalities</b>	<b>0</b>	<b>1</b>	<b>0</b>	<b>1</b>
<b>Percent of Unrestrained Fatalities to Total Fatalities</b>	<b>0%</b>	<b>100%</b>	<b>0%</b>	<b>20%</b>
<b>Unrestrained Injuries</b>	<b>3</b>	<b>11</b>	<b>3</b>	<b>11</b>
<b>Percent of Unrestrained Injuries to Total Injuries</b>	<b>1%</b>	<b>6%</b>	<b>2%</b>	<b>4%</b>

# Virginia House District 7 Distracted Driving Crash Statistics

Report Generated May, 2023

	Count	Highest Time Period(s)	Highest Day(s)	Highest Month(s)
<b>Fatal Crashes</b>	0	-	-	-
<b>Resulting Fatalities</b>	0	-	-	-
<b>Serious Injury Crashes</b>	11	Noon - 2:59pm (36%)	Monday • Thursday (54%)	June • March (36%)



## House District 7 Distracted Driving-Related Crashes

- |  |  |
|--|--|
| Interstate Crashes                                   | Non-interstate Crashes                               |
| <span style="color: red;">●</span> Fatal             | <span style="color: red;">●</span> Fatal             |
| <span style="color: orange;">●</span> Serious Injury | <span style="color: orange;">●</span> Serious Injury |

The blue gradient represents the density of all distracted driving-related crashes.



Available Crash Data - Calendar Year (CY)	CY 2019	CY 2020	CY 2021	CY 2022
Total Crashes	656	362	372	478
Fatal Crashes	1	1	2	5
Injury Crashes	184	111	105	153
Distracted Driving-Related Fatal Crashes	0	0	0	0
Percent of Distracted Driving-Related Fatal Crashes to Total Fatal Crashes	0%	0%	0%	0%
Distracted Driving-Related Injury Crashes	43	25	25	33
Percent of Distracted Driving-Related Injury Crashes to Total Injury Crashes	23%	23%	24%	22%