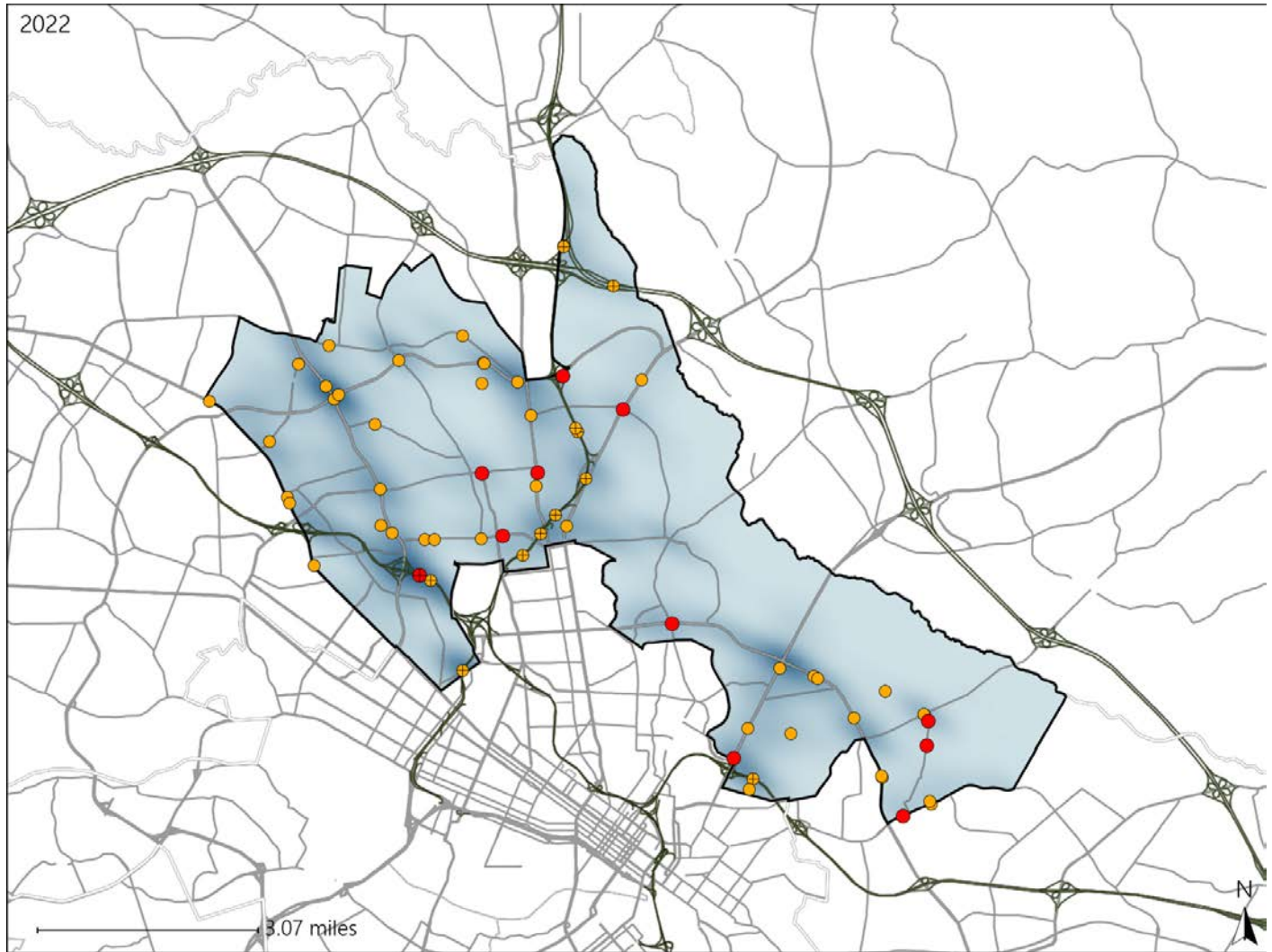


Virginia House District 80 Crash Statistics

Report Generated May, 2023

	Count	Highest Time Period(s)	Highest Day(s)	Highest Month(s)
Fatal Crashes	11	9:00pm - 11:59pm	Saturday • Wednesday	January • March
Resulting Fatalities	11	(36%)	(54%)	(36%)
Serious Injury Crashes	53	6:00pm - 8:59pm	Friday • Sunday	August
		(21%)	(46%)	(19%)



House District 80 Crashes

Interstate Crashes

- Fatal
- Serious Injury

Non-interstate Crashes

- Fatal
- Serious Injury

The blue gradient represents the density of all crashes.

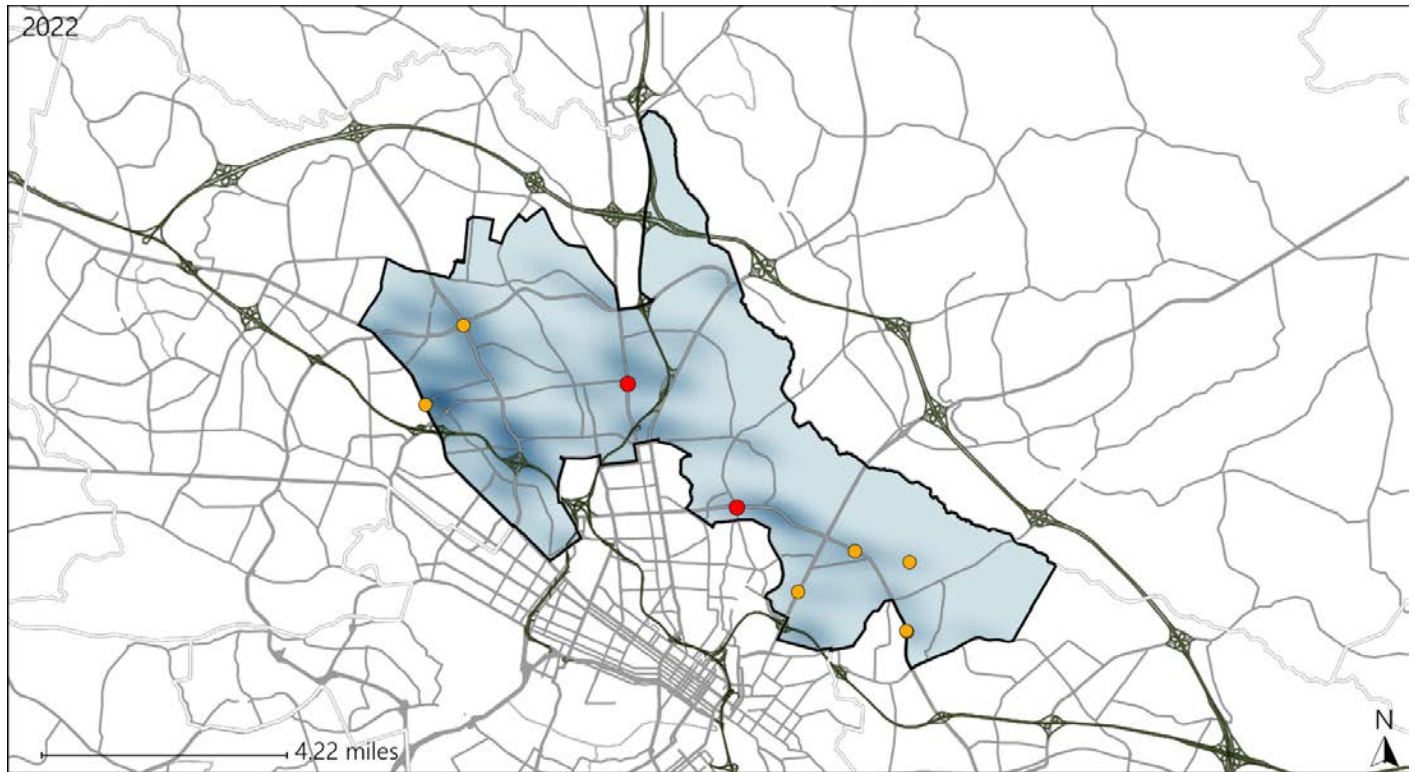


Available Crash Data - Calendar Year (CY)	CY 2019	CY 2020	CY 2021	CY 2022
Total Crashes	1881	1656	1622	1720
Fatal Crashes	10	12	14	11
Injury Crashes	540	442	447	469

Virginia House District 80 Alcohol Crash Statistics

Report Generated May, 2023

	Count	Highest Time Period(s)	Highest Day(s)	Highest Month(s)
Fatal Crashes	2	9:00pm - 11:59pm	Saturday	October
Resulting Fatalities	2	(100%)	(100%)	(100%)
Serious Injury Crashes	7	6:00am - 8:59am 9:00pm - 11:59pm	Friday • Saturday	January • September
		(58%)	(58%)	(58%)



House District 80 Alcohol-Related Crashes

Interstate Crashes Non-interstate Crashes
 ● Fatal ● Fatal
 ⊕ Serious Injury ⊕ Serious Injury

The blue gradient represents the density of all alcohol-related crashes.

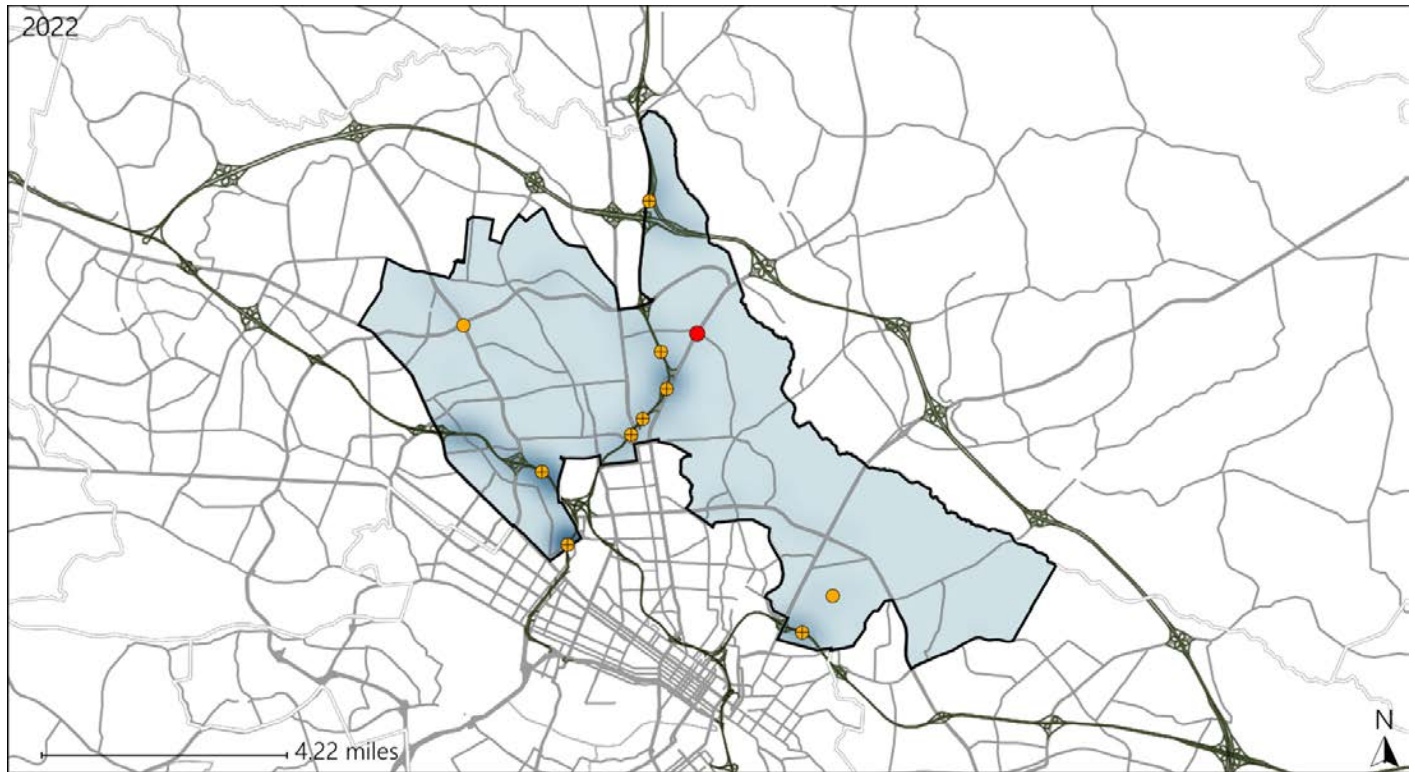


Available Crash Data - Calendar Year (CY)	CY 2019	CY 2020	CY 2021	CY 2022
Total Crashes	1881	1656	1622	1720
Fatal Crashes	10	12	14	11
Injury Crashes	540	442	447	469
Alcohol-Related Fatal Crashes	5	2	6	2
Percent of Alcohol-Related Fatal Crashes to Total Fatal Crashes	50%	17%	43%	18%
Alcohol-Related Injury Crashes	33	30	29	38
Percent of Alcohol-Related Injury Crashes to Total Injury Crashes	6%	7%	6%	8%

Virginia House District 80 Speed Crash Statistics

Report Generated May, 2023

	Count	Highest Time Period(s)	Highest Day(s)	Highest Month(s)
Fatal Crashes	1	6:00pm - 8:59pm	Wednesday	March
Resulting Fatalities	1	(100%)	(100%)	(100%)
Serious Injury Crashes	10	6:00pm - 8:59pm Noon - 2:59pm	Sunday	August + January
		(60%)	(30%)	(40%)



House District 80 Speed-Related Crashes

Interstate Crashes Non-interstate Crashes
 ● Fatal ● Fatal
 ⊕ Serious Injury ⊕ Serious Injury

The blue gradient represents the density of all speed-related crashes.

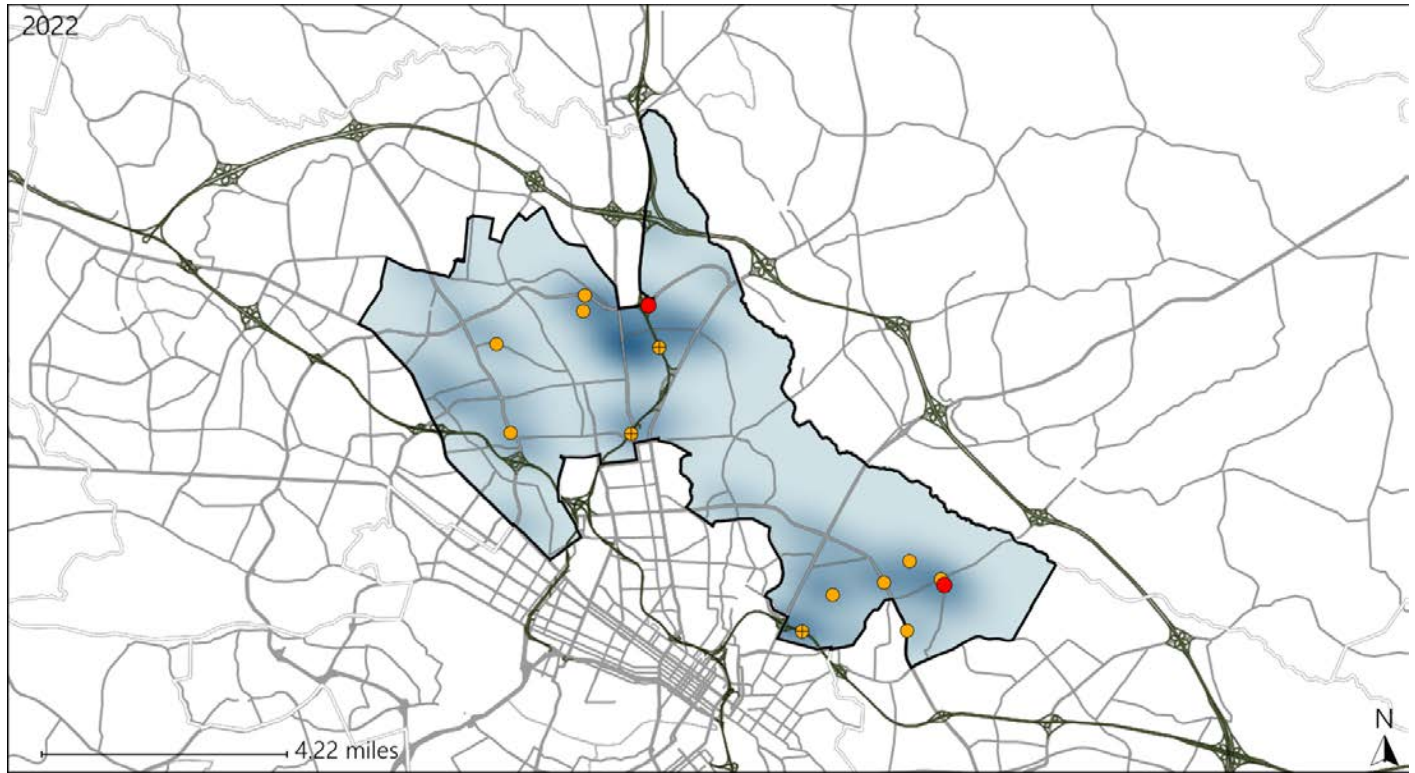


Available Crash Data - Calendar Year (CY)	CY 2019	CY 2020	CY 2021	CY 2022
Total Crashes	1881	1656	1622	1720
Fatal Crashes	10	12	14	11
Injury Crashes	540	442	447	469
Speed-Related Fatal Crashes	1	2	6	1
Percent of Speed-Related Fatal Crashes to Total Fatal Crashes	10%	17%	43%	9%
Speed-Related Injury Crashes	80	56	70	60
Percent of Speed-Related Injury Crashes to Total Injury Crashes	15%	13%	16%	13%

Virginia House District 80 Unrestrained Crash Statistics

Report Generated May, 2023

	Count	Highest Time Period(s)	Highest Day(s)	Highest Month(s)
Fatal Crashes	2	3:00am - 5:59am	Sunday • Wednesday	November
Unrestrained Fatalities	2	3:00pm - 5:59pm (100%)	(100%)	(100%)
Serious Injury Crashes	12	3:00pm - 5:59pm 9:00am - 11:59am (34%)	Sunday (33%)	August • January (50%)



House District 80 Unrestrained-Related Crashes

- | | |
|--------------------|------------------------|
| Interstate Crashes | Non-interstate Crashes |
| ● Fatal | ● Fatal |
| ⊕ Serious Injury | ⊕ Serious Injury |

The blue gradient represents the density of all unrestrained-related crashes.

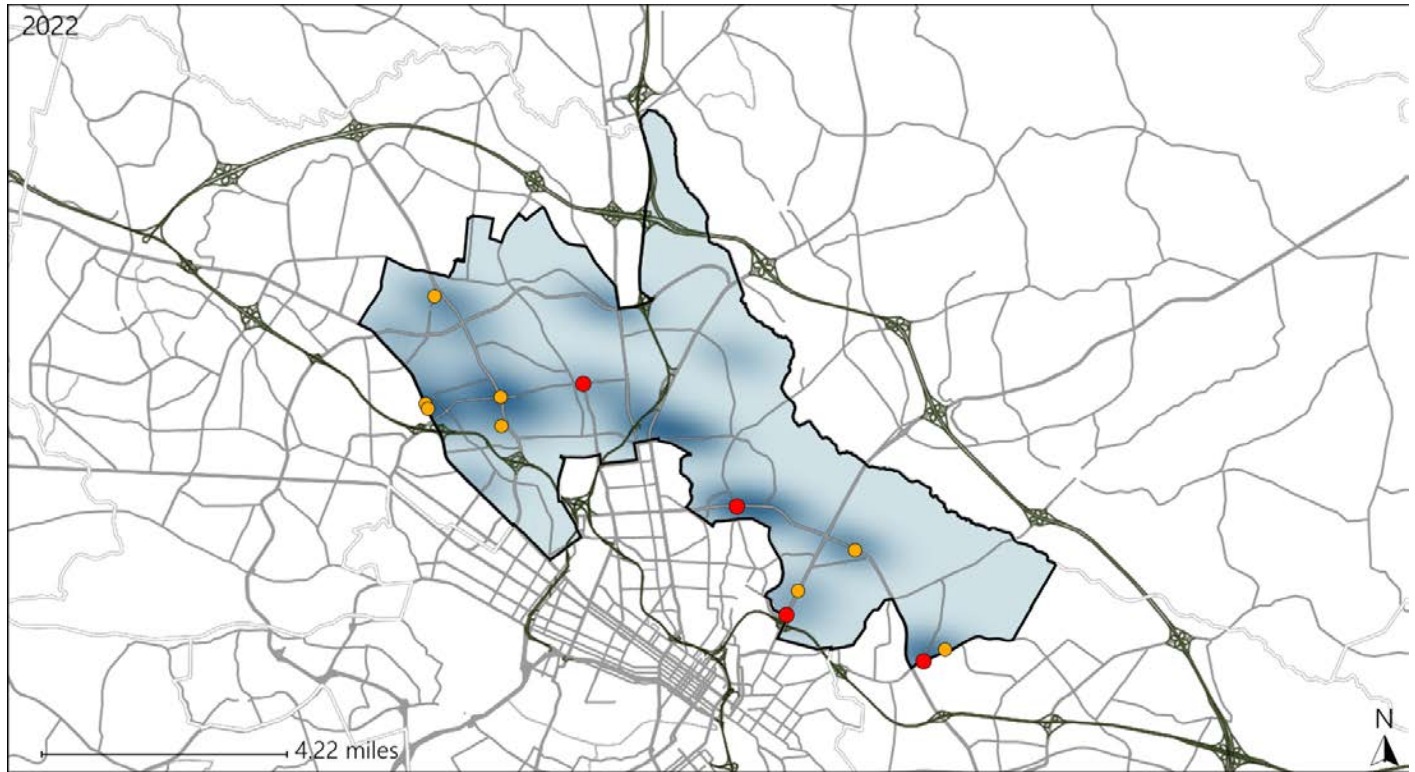


Available Crash Data - Calendar Year (CY)	CY 2019	CY 2020	CY 2021	CY 2022
Total Crashes	1881	1656	1622	1720
Fatalities	10	13	17	11
Injuries	852	728	754	830
Unrestrained Fatalities	2	3	6	2
Percent of Unrestrained Fatalities to Total Fatalities	20%	23%	35%	18%
Unrestrained Injuries	37	39	55	52
Percent of Unrestrained Injuries to Total Injuries	4%	5%	7%	6%

Virginia House District 80 Pedestrian Crash Statistics

Report Generated May, 2023

	Count	Highest Time Period(s)	Highest Day(s)	Highest Month(s)
Fatal Crashes	4	9:00pm - 11:59pm	Saturday	September
Pedestrian Fatalities	4	(75%)	(50%)	(50%)
Serious Injury Crashes	8	6:00pm - 8:59pm	Friday	December • January
		(50%)	(38%)	(50%)



House District 80 Pedestrian-Related Crashes

- | | |
|--------------------|------------------------|
| Interstate Crashes | Non-interstate Crashes |
| Fatal | Fatal |
| Serious Injury | Serious Injury |

The blue gradient represents the density of all pedestrian-related crashes.

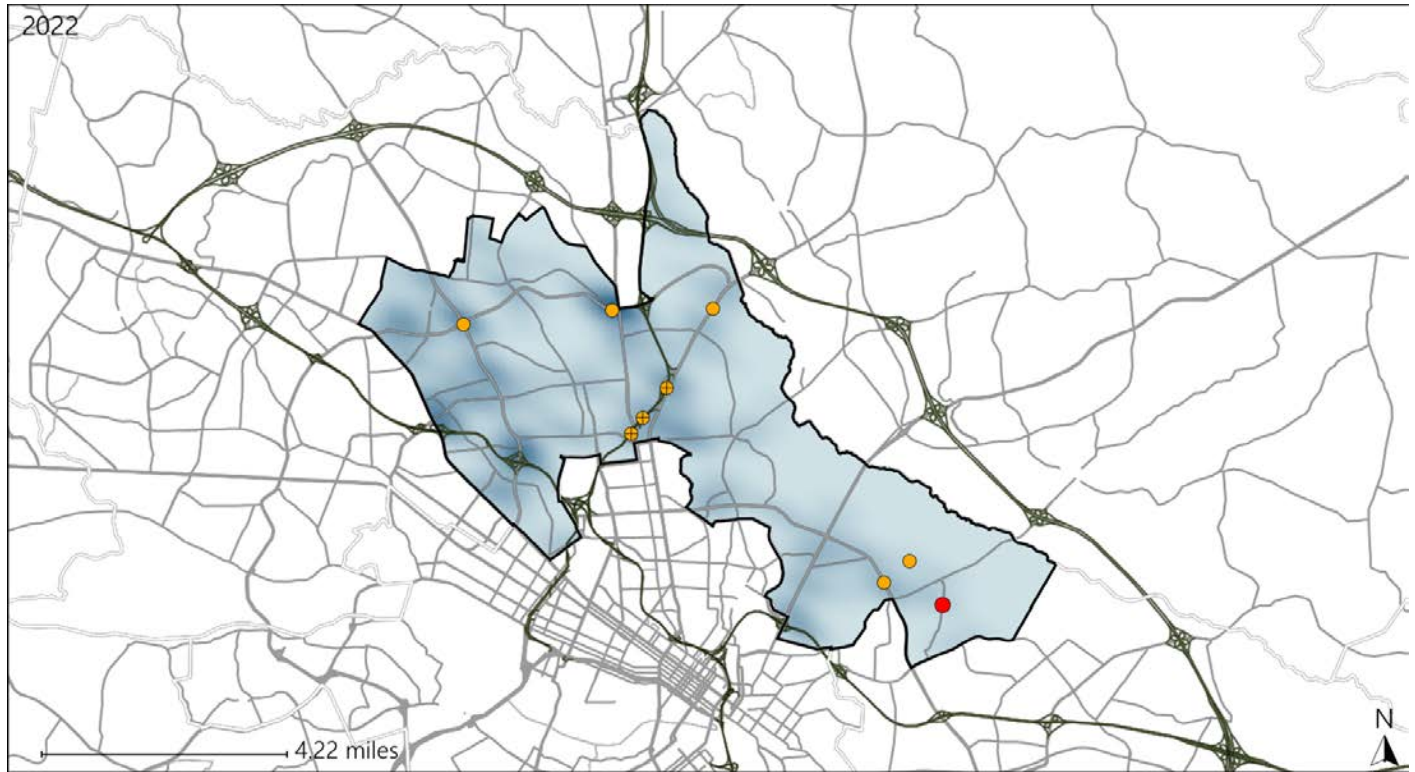


Available Crash Data - Calendar Year (CY)	CY 2019	CY 2020	CY 2021	CY 2022
Total Crashes	1881	1656	1622	1720
Fatal Crashes	10	12	14	11
Injury Crashes	540	442	447	469
Pedestrian-Related Fatal Crashes	6	4	3	4
Percent of Pedestrian-Related Fatal Crashes to Total Fatal Crashes	60%	33%	21%	36%
Pedestrian-Related Injury Crashes	22	23	25	30
Percent of Pedestrian-Related Injury Crashes to Total Injury Crashes	4%	5%	6%	6%

Virginia House District 80 Distracted Driving Crash Statistics

Report Generated May, 2023

	Count	Highest Time Period(s)	Highest Day(s)	Highest Month(s)
Fatal Crashes	1	6:00pm - 8:59pm	Tuesday	January
Resulting Fatalities	1	(100%)	(100%)	(100%)
Serious Injury Crashes	8	9:00am - 11:59am	Thursday	January
		(25%)	(38%)	(38%)



House District 80 Distracted Driving-Related Crashes

- | | |
|--------------------|------------------------|
| Interstate Crashes | Non-interstate Crashes |
| Fatal | Fatal |
| Serious Injury | Serious Injury |

The blue gradient represents the density of all distracted driving-related crashes.



Available Crash Data - Calendar Year (CY)	CY 2019	CY 2020	CY 2021	CY 2022
Total Crashes	1881	1656	1622	1720
Fatal Crashes	10	12	14	11
Injury Crashes	540	442	447	469
Distracted Driving-Related Fatal Crashes	1	1	2	1
Percent of Distracted Driving-Related Fatal Crashes to Total Fatal Crashes	10%	8%	14%	9%
Distracted Driving-Related Injury Crashes	85	85	58	68
Percent of Distracted Driving-Related Injury Crashes to Total Injury Crashes	16%	19%	13%	14%