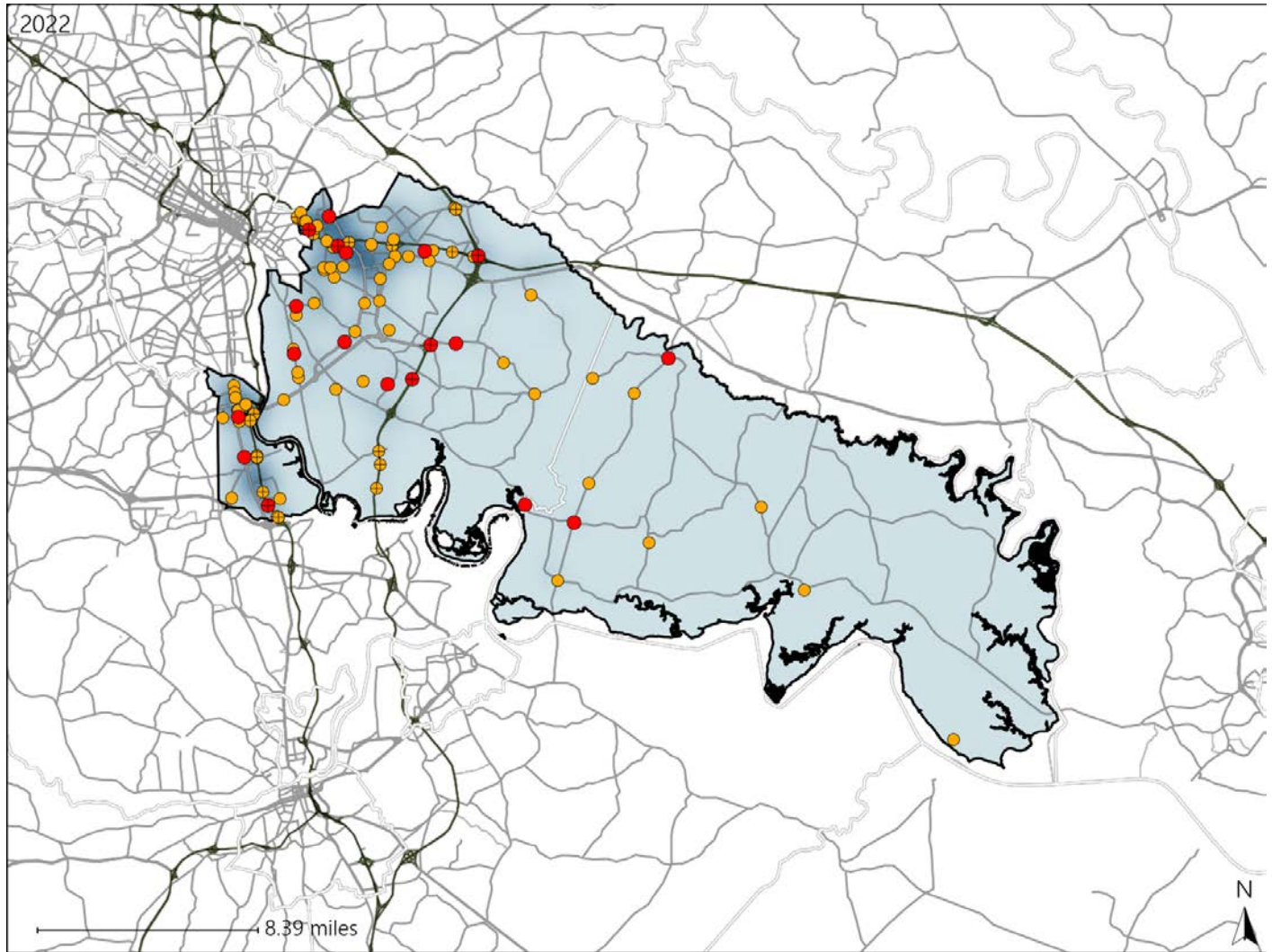


Virginia House District 81 Crash Statistics

Report Generated May, 2023

	Count	Highest Time Period(s)	Highest Day(s)	Highest Month(s)
Fatal Crashes	19	3:00pm - 5:59pm	Tuesday	August
Resulting Fatalities	20	(26%)	(26%)	(21%)
Serious Injury Crashes	79	9:00pm - 11:59pm	Saturday	December
		(23%)	(20%)	(14%)



House District 81 Crashes

Interstate Crashes

- Fatal
- Serious Injury

Non-interstate Crashes

- Fatal
- Serious Injury

The blue gradient represents the density of all crashes.

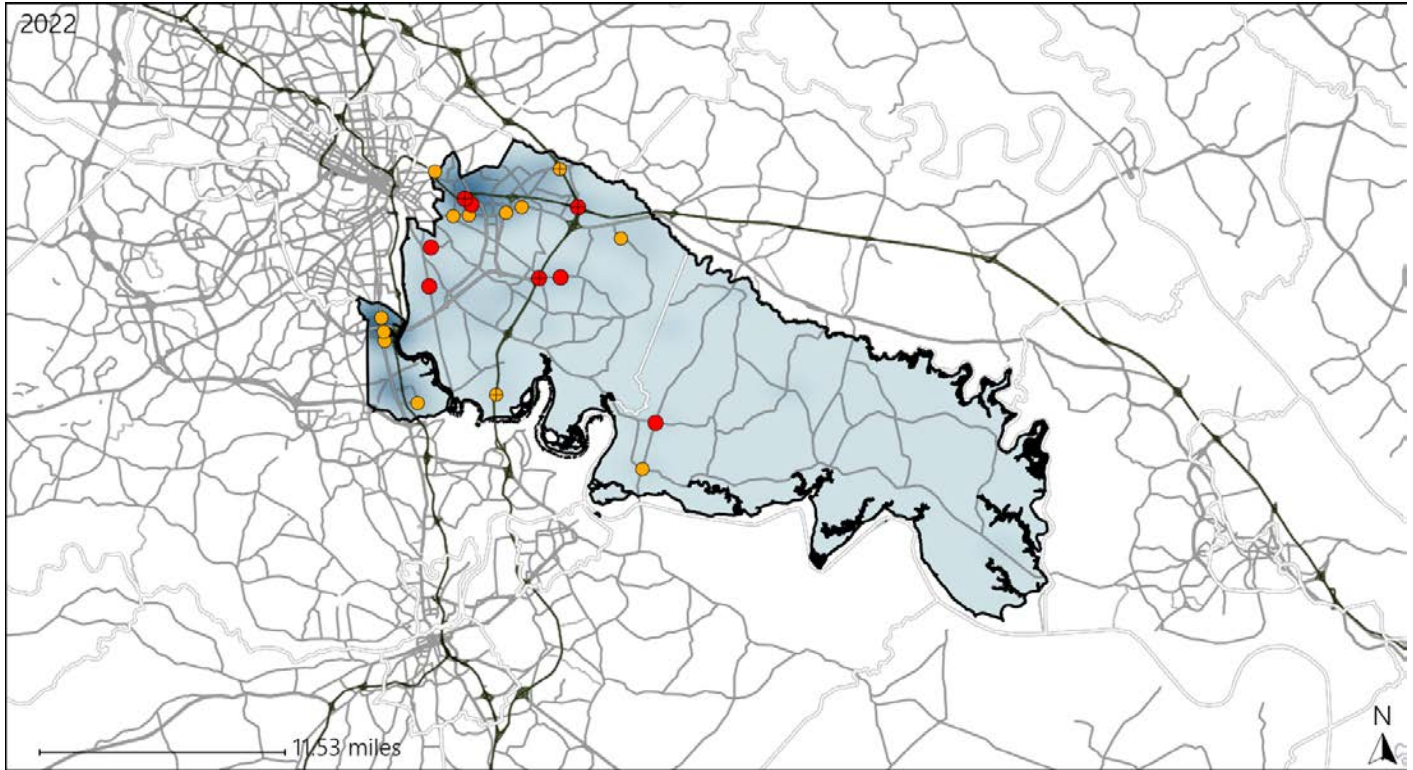


Available Crash Data - Calendar Year (CY)	CY 2019	CY 2020	CY 2021	CY 2022
Total Crashes	1921	1686	1889	1935
Fatal Crashes	7	18	15	19
Injury Crashes	545	499	493	493

Virginia House District 81 Alcohol Crash Statistics

Report Generated May, 2023

	Count	Highest Time Period(s)	Highest Day(s)	Highest Month(s)
Fatal Crashes	8	Midnight - 2:59am	Saturday • Sunday	August
Resulting Fatalities	9	(50%)	(50%)	(38%)
Serious Injury Crashes	14	9:00pm - 11:59pm	Sunday	May • November
		(43%)	(50%)	(42%)



House District 81 Alcohol-Related Crashes

Interstate Crashes

Non-interstate Crashes

● Fatal

● Fatal

● Serious Injury

● Serious Injury

The blue gradient represents the density of all alcohol-related crashes.

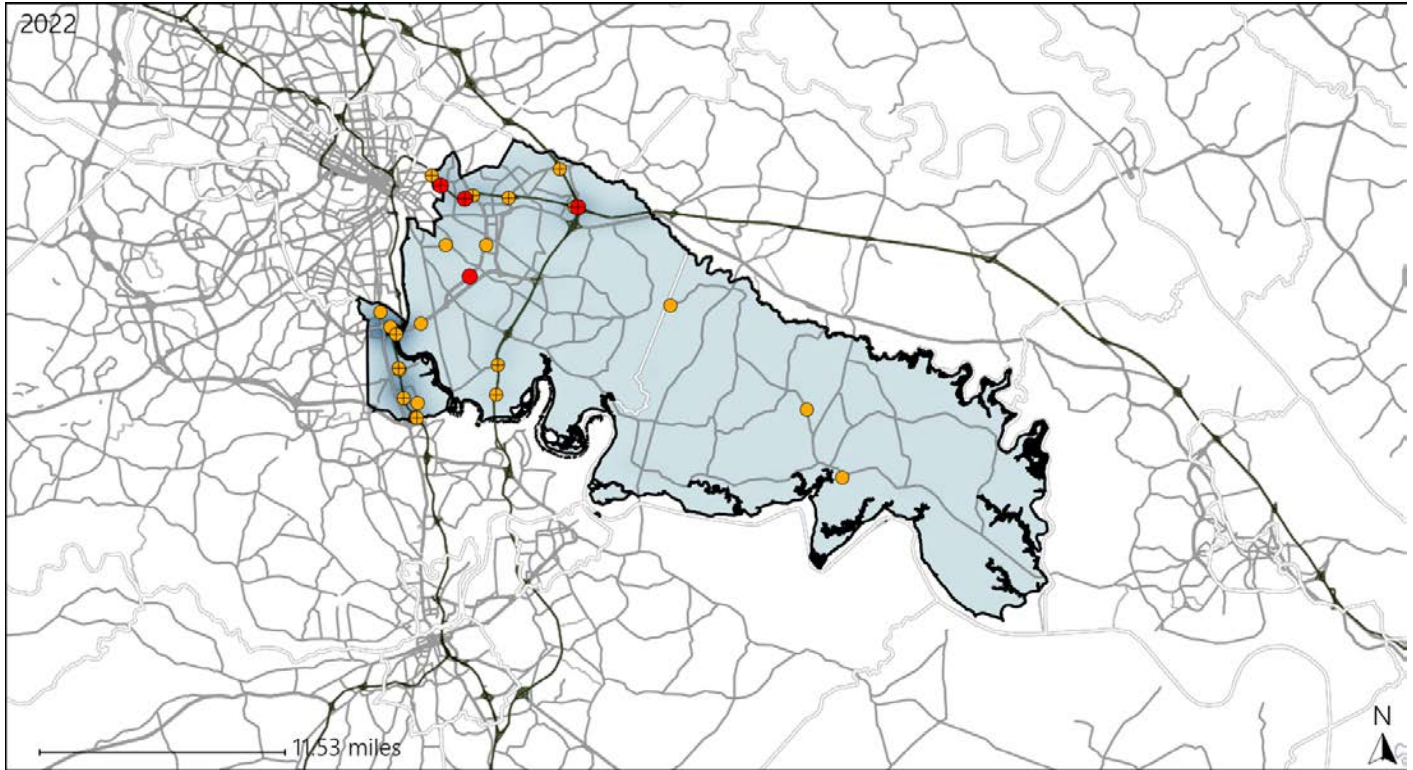


Available Crash Data - Calendar Year (CY)	CY 2019	CY 2020	CY 2021	CY 2022
Total Crashes	1921	1686	1889	1935
Fatal Crashes	7	18	15	19
Injury Crashes	545	499	493	493
Alcohol-Related Fatal Crashes	3	5	4	8
Percent of Alcohol-Related Fatal Crashes to Total Fatal Crashes	43%	28%	27%	42%
Alcohol-Related Injury Crashes	49	41	43	36
Percent of Alcohol-Related Injury Crashes to Total Injury Crashes	9%	8%	9%	7%

Virginia House District 81 Speed Crash Statistics

Report Generated May, 2023

	Count	Highest Time Period(s)	Highest Day(s)	Highest Month(s)
Fatal Crashes	4	Noon - 2:59pm	Monday • Saturday	April • August
Resulting Fatalities	5	(50%)	(50%)	(50%)
Serious Injury Crashes	24	9:00pm - 11:59pm	Saturday	December
		(29%)	(25%)	(25%)



House District 81 Speed-Related Crashes

Interstate Crashes Non-interstate Crashes
 ● Fatal ● Fatal
 ⊕ Serious Injury ⊕ Serious Injury

The blue gradient represents the density of all speed-related crashes.

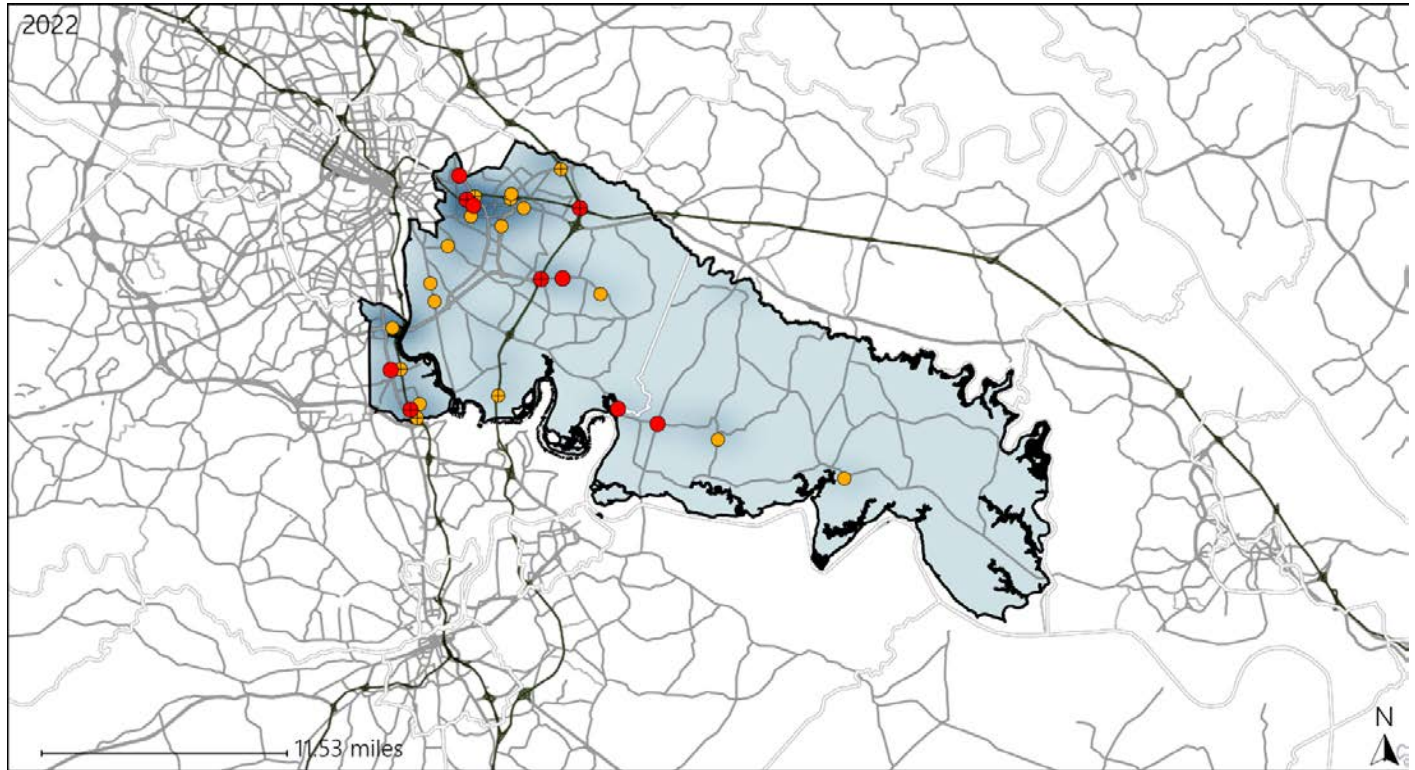


Available Crash Data - Calendar Year (CY)	CY 2019	CY 2020	CY 2021	CY 2022
Total Crashes	1921	1686	1889	1935
Fatal Crashes	7	18	15	19
Injury Crashes	545	499	493	493
Speed-Related Fatal Crashes	2	8	3	4
Percent of Speed-Related Fatal Crashes to Total Fatal Crashes	29%	44%	20%	21%
Speed-Related Injury Crashes	103	112	107	95
Percent of Speed-Related Injury Crashes to Total Injury Crashes	19%	22%	22%	19%

Virginia House District 81 Unrestrained Crash Statistics

Report Generated May, 2023

	Count	Highest Time Period(s)	Highest Day(s)	Highest Month(s)
Fatal Crashes	10	3:00pm - 5:59pm	Sunday	August
Unrestrained Fatalities	11	Midnight - 2:59am (60%)	(40%)	(30%)
Serious Injury Crashes	18	9:00pm - 11:59pm (33%)	Saturday (33%)	December (33%)



House District 81 Unrestrained-Related Crashes

- | | |
|--|--|
| Interstate Crashes | Non-interstate Crashes |
| ● Fatal | ● Fatal |
| ● Serious Injury | ● Serious Injury |

The blue gradient represents the density of all unrestrained-related crashes.

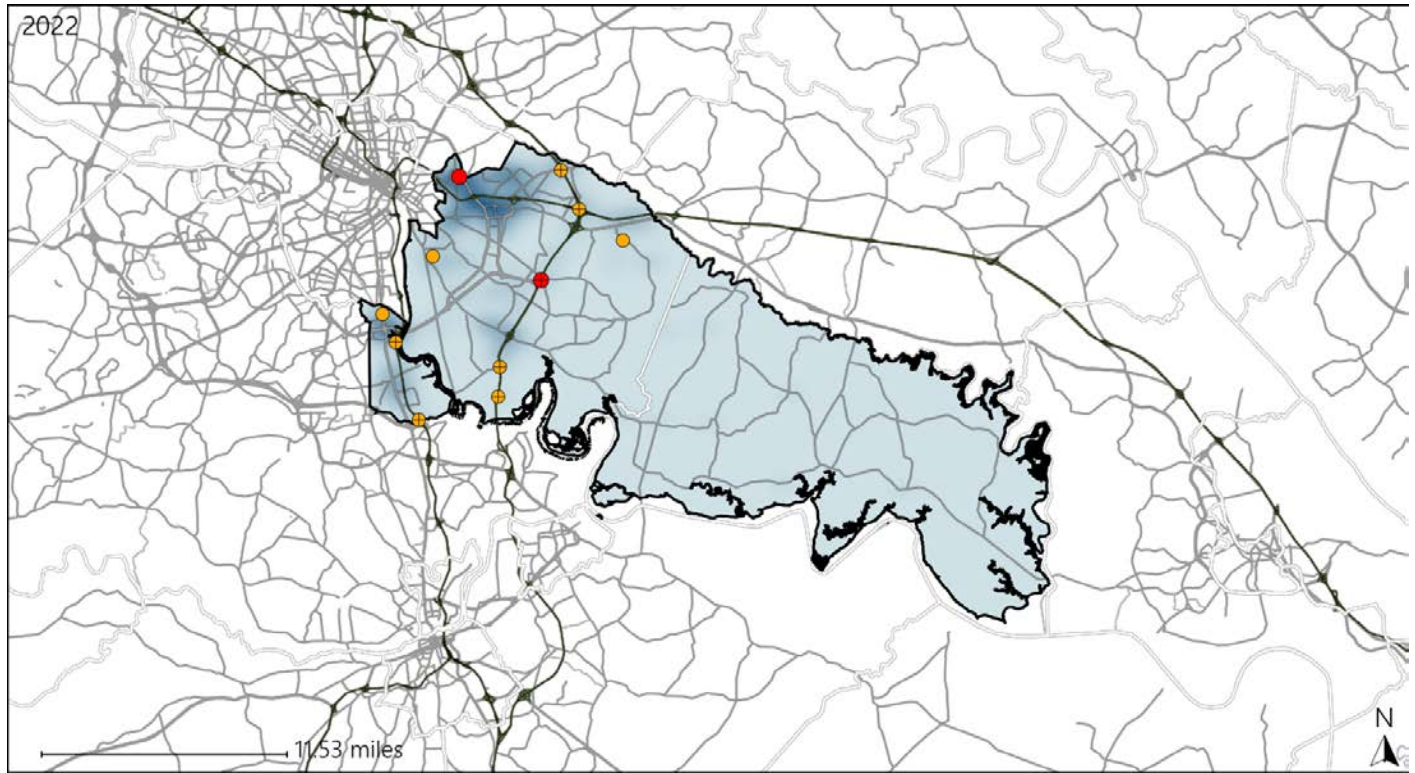


Available Crash Data - Calendar Year (CY)	CY 2019	CY 2020	CY 2021	CY 2022
Total Crashes	1921	1686	1889	1935
Fatalities	7	20	15	20
Injuries	936	856	835	850
Unrestrained Fatalities	2	9	3	11
Percent of Unrestrained Fatalities to Total Fatalities	29%	45%	20%	55%
Unrestrained Injuries	62	77	72	53
Percent of Unrestrained Injuries to Total Injuries	7%	9%	9%	6%

Virginia House District 81 Distracted Driving Crash Statistics

Report Generated May, 2023

	Count	Highest Time Period(s)	Highest Day(s)	Highest Month(s)
Fatal Crashes	2	9:00am - 11:59am	Friday • Tuesday	June • October
Resulting Fatalities	2	Midnight - 2:59am (100%)	(100%)	(100%)
Serious Injury Crashes	9	6:00pm - 8:59pm 9:00am - 11:59am (44%)	Monday • Sunday (44%)	April • November (66%)



House District 81 Distracted Driving-Related Crashes

- | | |
|--------------------|------------------------|
| Interstate Crashes | Non-interstate Crashes |
| ● Fatal | ● Fatal |
| ⊕ Serious Injury | ⊕ Serious Injury |

The blue gradient represents the density of all distracted driving-related crashes.



Available Crash Data - Calendar Year (CY)	CY 2019	CY 2020	CY 2021	CY 2022
Total Crashes	1921	1686	1889	1935
Fatal Crashes	7	18	15	19
Injury Crashes	545	499	493	493
Distracted Driving-Related Fatal Crashes	0	1	1	2
Percent of Distracted Driving-Related Fatal Crashes to Total Fatal Crashes	0%	6%	7%	11%
Distracted Driving-Related Injury Crashes	72	88	72	64
Percent of Distracted Driving-Related Injury Crashes to Total Injury Crashes	13%	18%	15%	13%