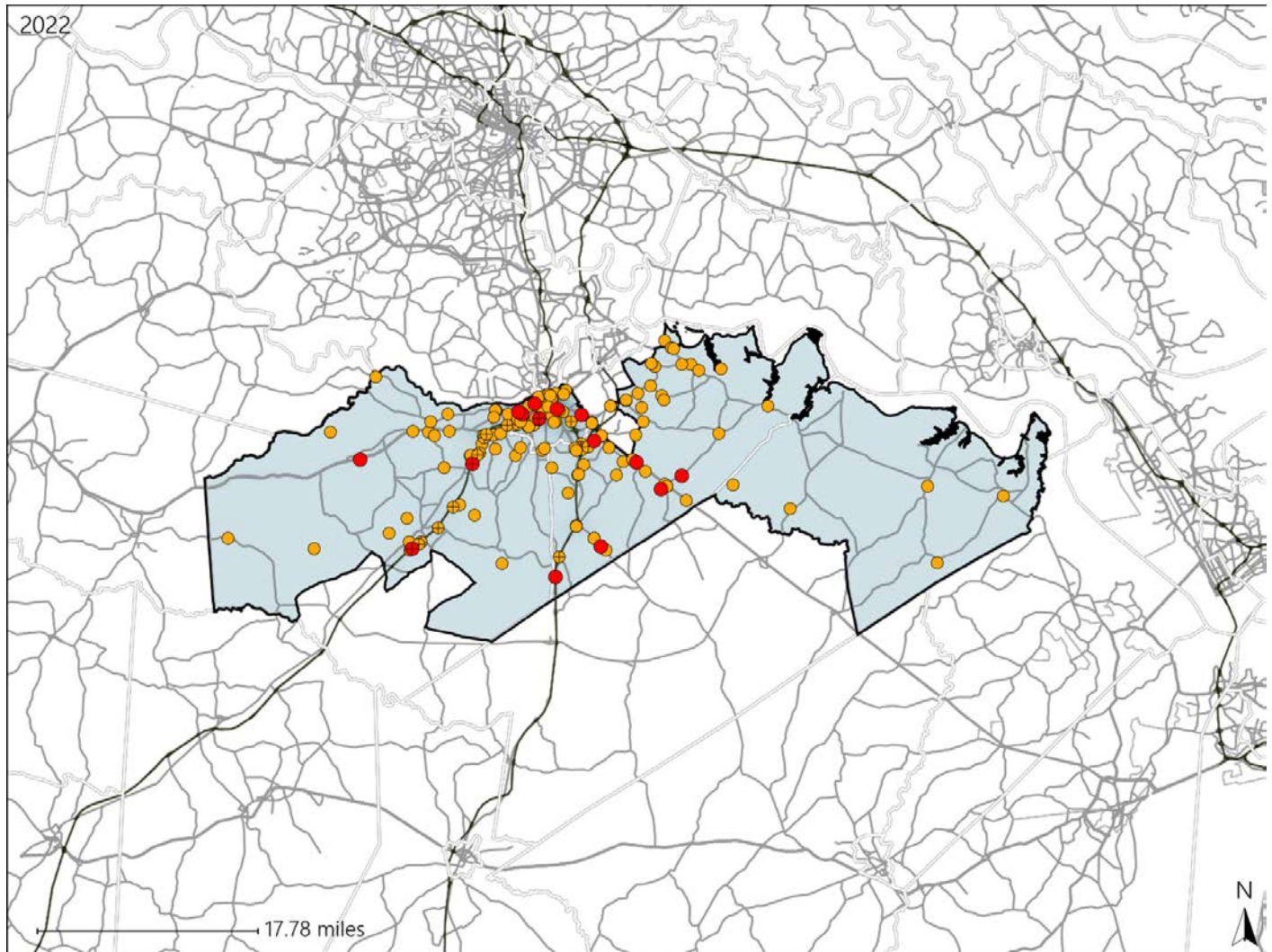


Virginia House District 82 Crash Statistics

Report Generated May, 2023

	Count	Highest Time Period(s)	Highest Day(s)	Highest Month(s)
Fatal Crashes	15	6:00pm - 8:59pm	Saturday	November
Resulting Fatalities	16	(27%)	(33%)	(20%)
Serious Injury Crashes	152	3:00pm - 5:59pm Noon - 2:59pm	Saturday • Sunday	October
		(40%)	(32%)	(14%)



House District 82 Crashes

Interstate Crashes

- Fatal
- Serious Injury

Non-interstate Crashes

- Fatal
- Serious Injury

The blue gradient represents the density of all crashes.

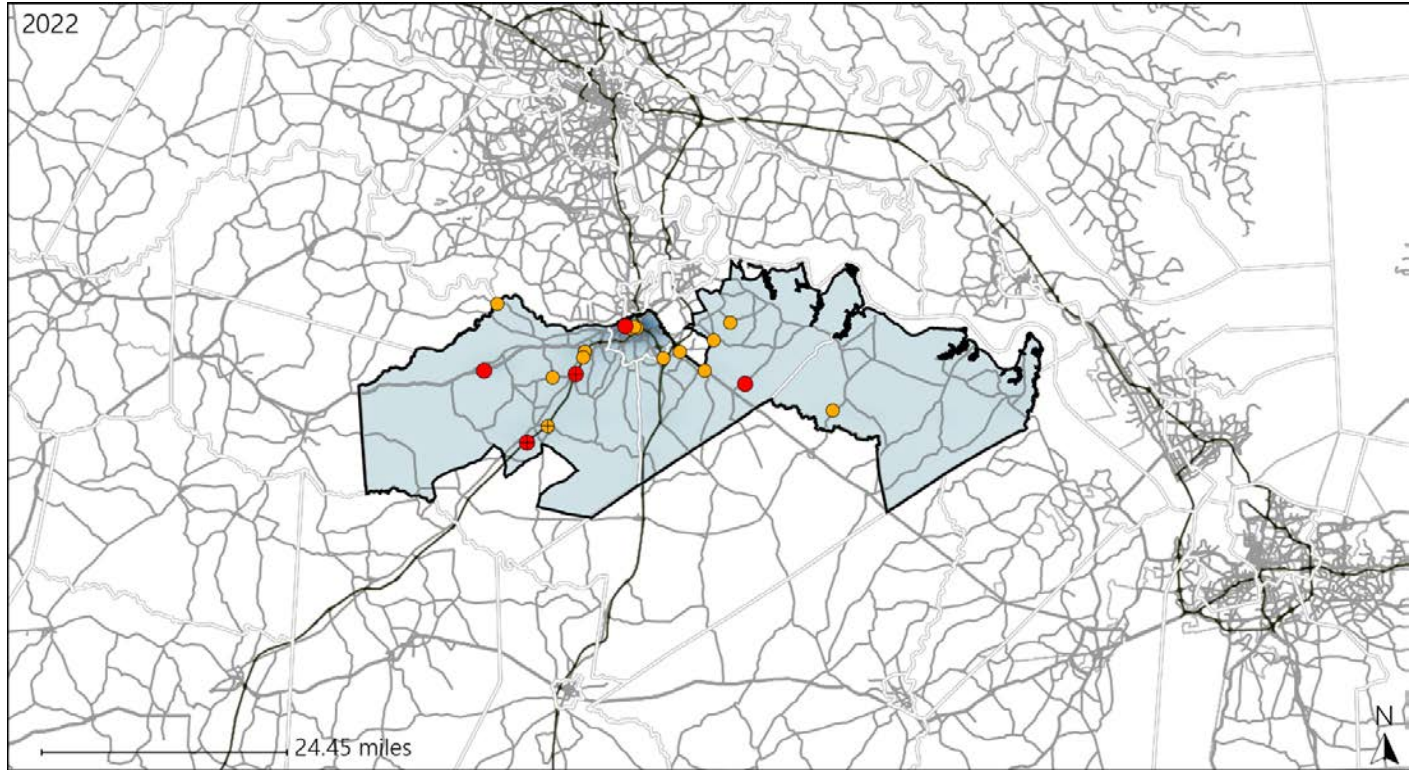


Available Crash Data - Calendar Year (CY)	CY 2019	CY 2020	CY 2021	CY 2022
Total Crashes	1671	1521	1698	1814
Fatal Crashes	22	17	23	15
Injury Crashes	697	592	533	579

Virginia House District 82 Alcohol Crash Statistics

Report Generated May, 2023

	Count	Highest Time Period(s)	Highest Day(s)	Highest Month(s)
Fatal Crashes	5	6:00pm - 8:59pm	Saturday	February
Resulting Fatalities	5	(40%)	(40%)	(40%)
Serious Injury Crashes	15	9:00pm - 11:59pm	Sunday	October
		(33%)	(40%)	(33%)



House District 82 Alcohol-Related Crashes

Interstate Crashes

Non-interstate Crashes

- Fatal
- Serious Injury

- Fatal
- Serious Injury

The blue gradient represents the density of all alcohol-related crashes.

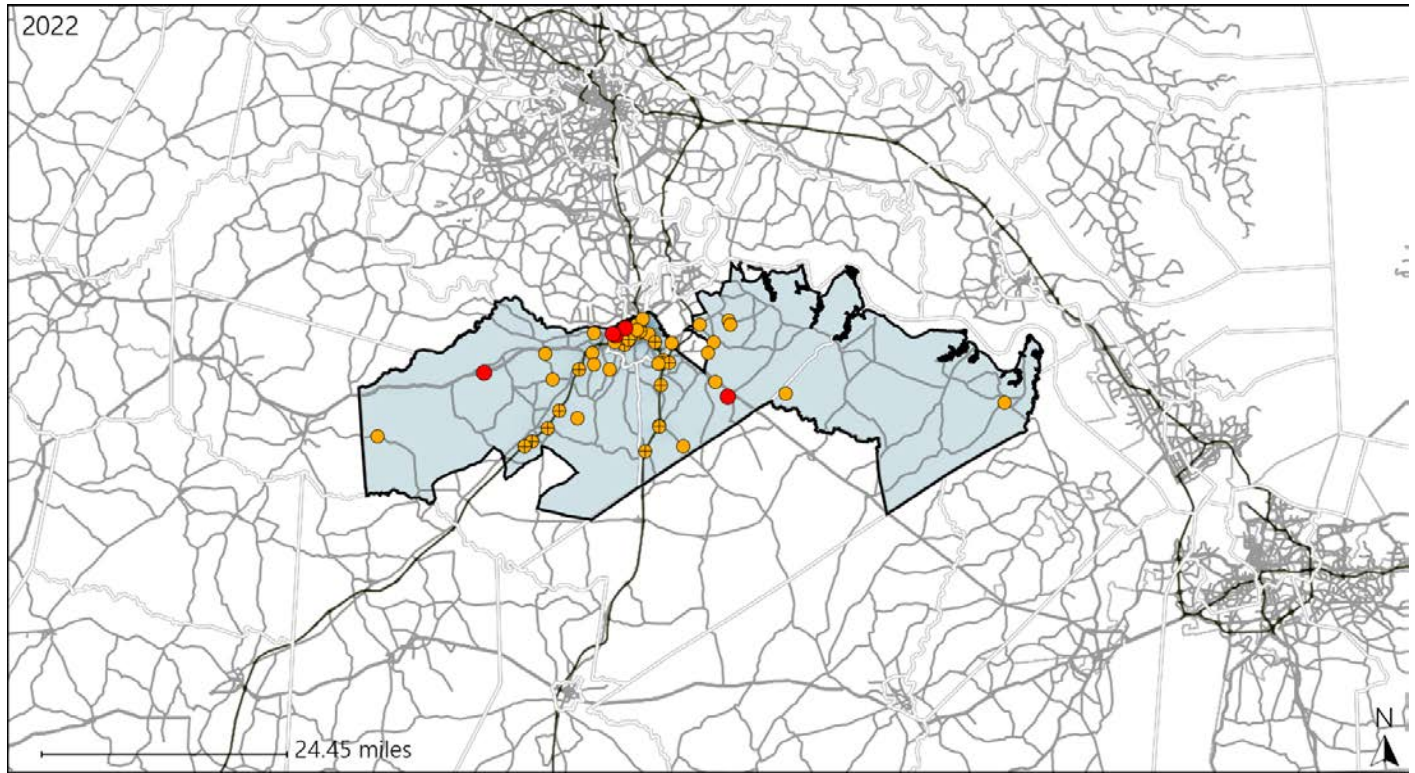


Available Crash Data - Calendar Year (CY)	CY 2019	CY 2020	CY 2021	CY 2022
Total Crashes	1671	1521	1698	1814
Fatal Crashes	22	17	23	15
Injury Crashes	697	592	533	579
Alcohol-Related Fatal Crashes	7	5	7	5
Percent of Alcohol-Related Fatal Crashes to Total Fatal Crashes	32%	29%	30%	33%
Alcohol-Related Injury Crashes	45	52	45	40
Percent of Alcohol-Related Injury Crashes to Total Injury Crashes	6%	9%	8%	7%

Virginia House District 82 Speed Crash Statistics

Report Generated May, 2023

	Count	Highest Time Period(s)	Highest Day(s)	Highest Month(s)
Fatal Crashes	5	6:00pm - 8:59pm	Saturday	August • February
Resulting Fatalities	5	9:00pm - 11:59pm (80%)	(40%)	(40%)
Serious Injury Crashes	44	9:00pm - 11:59pm Noon - 2:59pm (36%)	Saturday (23%)	April • August (22%)



House District 82 Speed-Related Crashes

Interstate Crashes Non-interstate Crashes
 ● Fatal ● Fatal
 ⊕ Serious Injury ⊕ Serious Injury
 The blue gradient represents the density of all speed-related crashes.

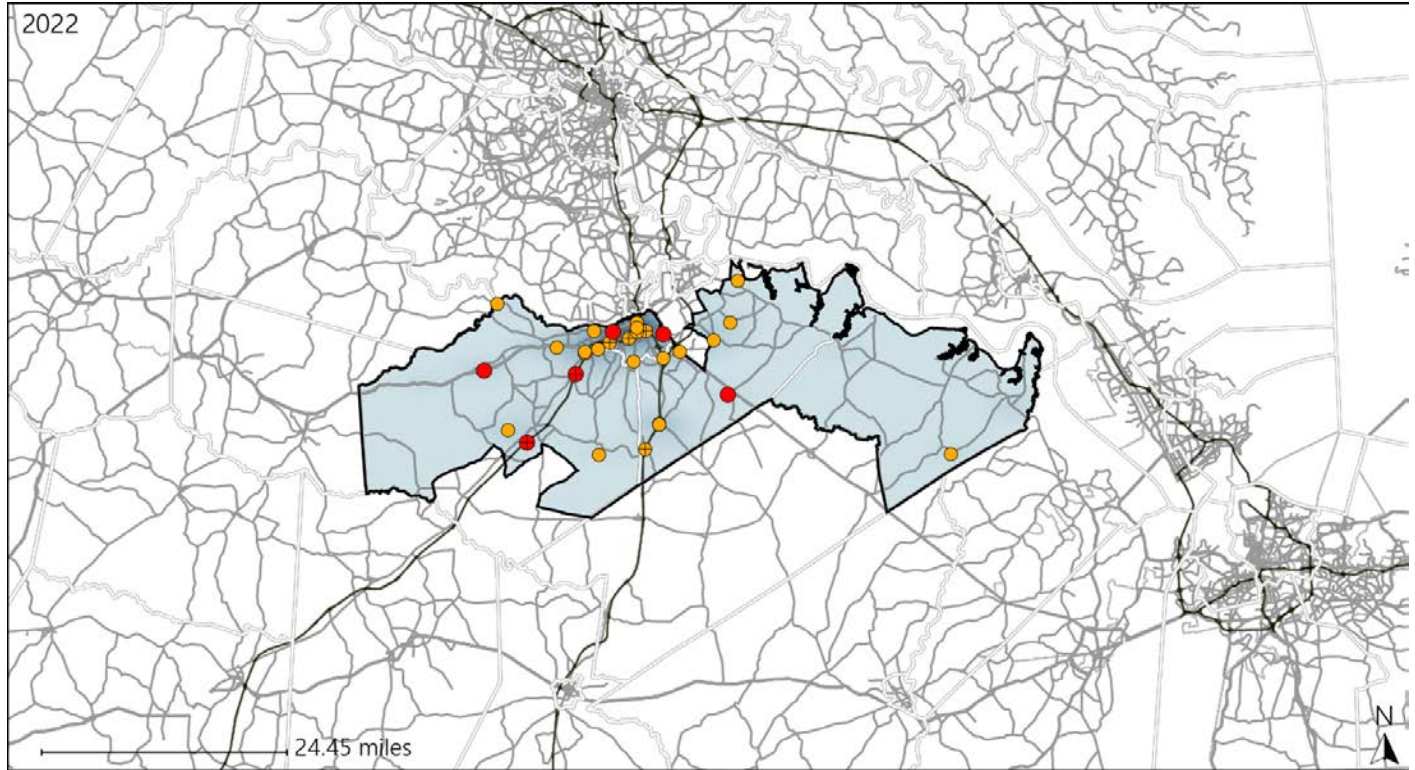


Available Crash Data - Calendar Year (CY)	CY 2019	CY 2020	CY 2021	CY 2022
Total Crashes	1671	1521	1698	1814
Fatal Crashes	22	17	23	15
Injury Crashes	697	592	533	579
Speed-Related Fatal Crashes	10	8	9	5
Percent of Speed-Related Fatal Crashes to Total Fatal Crashes	45%	47%	39%	33%
Speed-Related Injury Crashes	156	154	151	131
Percent of Speed-Related Injury Crashes to Total Injury Crashes	22%	26%	28%	23%

Virginia House District 82 Unrestrained Crash Statistics

Report Generated May, 2023

	Count	Highest Time Period(s)	Highest Day(s)	Highest Month(s)
Fatal Crashes	6	Midnight - 2:59am	Saturday	February • June
Unrestrained Fatalities	6	(33%)	(67%)	(66%)
Serious Injury Crashes	25	3:00pm - 5:59pm	Sunday	July • June
		(32%)	(24%)	(32%)



House District 82 Unrestrained-Related Crashes

Interstate Crashes

- Fatal
- Serious Injury

Non-interstate Crashes

- Fatal
- Serious Injury

The blue gradient represents the density of all unrestrained-related crashes.

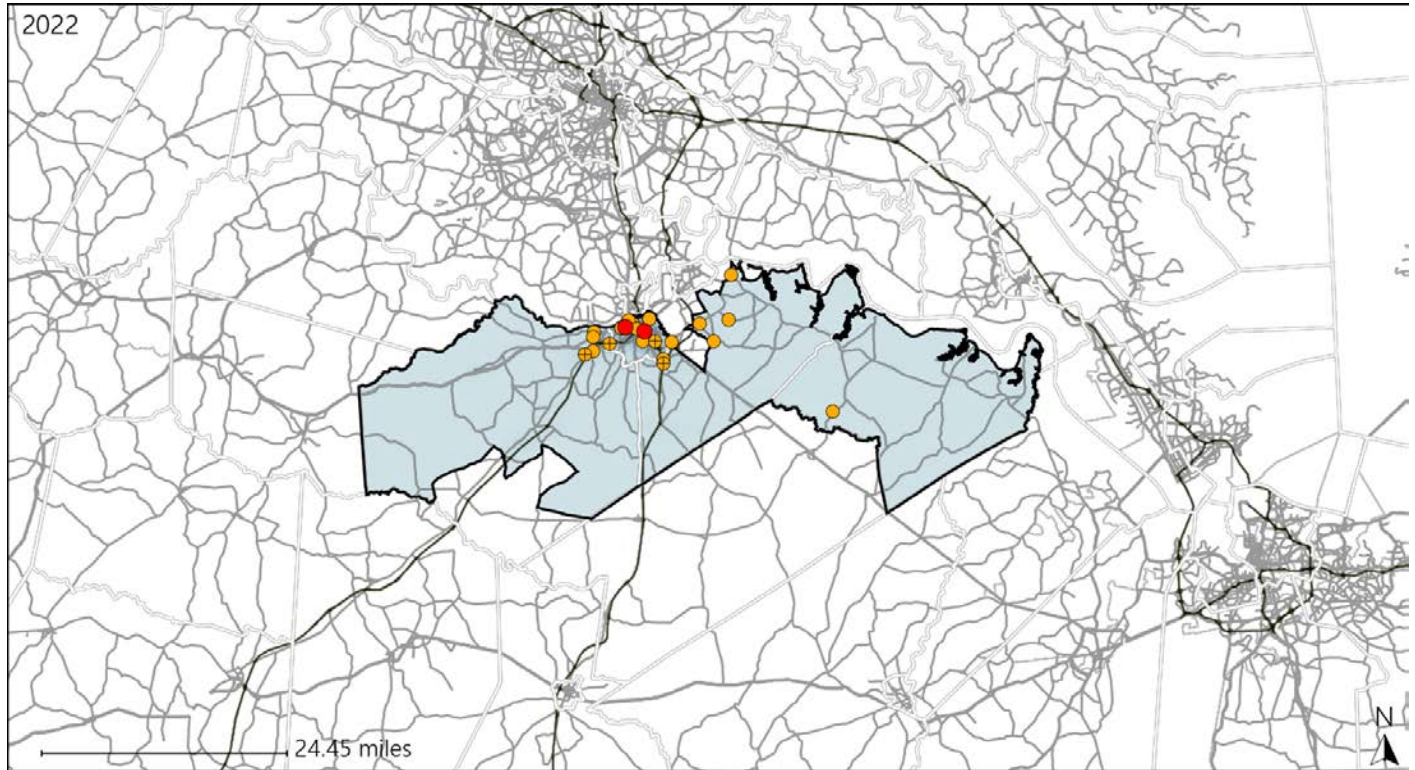


Available Crash Data - Calendar Year (CY)	CY 2019	CY 2020	CY 2021	CY 2022
Total Crashes	1671	1521	1698	1814
Fatalities	29	19	25	16
Injuries	1053	860	829	926
Unrestrained Fatalities	15	10	12	6
Percent of Unrestrained Fatalities to Total Fatalities	52%	53%	48%	38%
Unrestrained Injuries	85	112	108	96
Percent of Unrestrained Injuries to Total Injuries	8%	13%	13%	10%

Virginia House District 82 Distracted Driving Crash Statistics

Report Generated May, 2023

	Count	Highest Time Period(s)	Highest Day(s)	Highest Month(s)
Fatal Crashes	2	9:00pm - 11:59pm	Friday - Sunday	March - May
Resulting Fatalities	2	Noon - 2:59pm (100%)	(100%)	(100%)
Serious Injury Crashes	23	9:00pm - 11:59pm (30%)	Sunday (26%)	October (17%)



House District 82 Distracted Driving-Related Crashes

- | | |
|--|--|
| Interstate Crashes | Non-interstate Crashes |
| ● Fatal | ● Fatal |
| ● Serious Injury | ● Serious Injury |

The blue gradient represents the density of all distracted driving-related crashes.



Available Crash Data - Calendar Year (CY)	CY 2019	CY 2020	CY 2021	CY 2022
Total Crashes	1671	1521	1698	1814
Fatal Crashes	22	17	23	15
Injury Crashes	697	592	533	579
Distracted Driving-Related Fatal Crashes	2	2	0	2
Percent of Distracted Driving-Related Fatal Crashes to Total Fatal Crashes	9%	12%	0%	13%
Distracted Driving-Related Injury Crashes	147	108	108	99
Percent of Distracted Driving-Related Injury Crashes to Total Injury Crashes	21%	18%	20%	17%