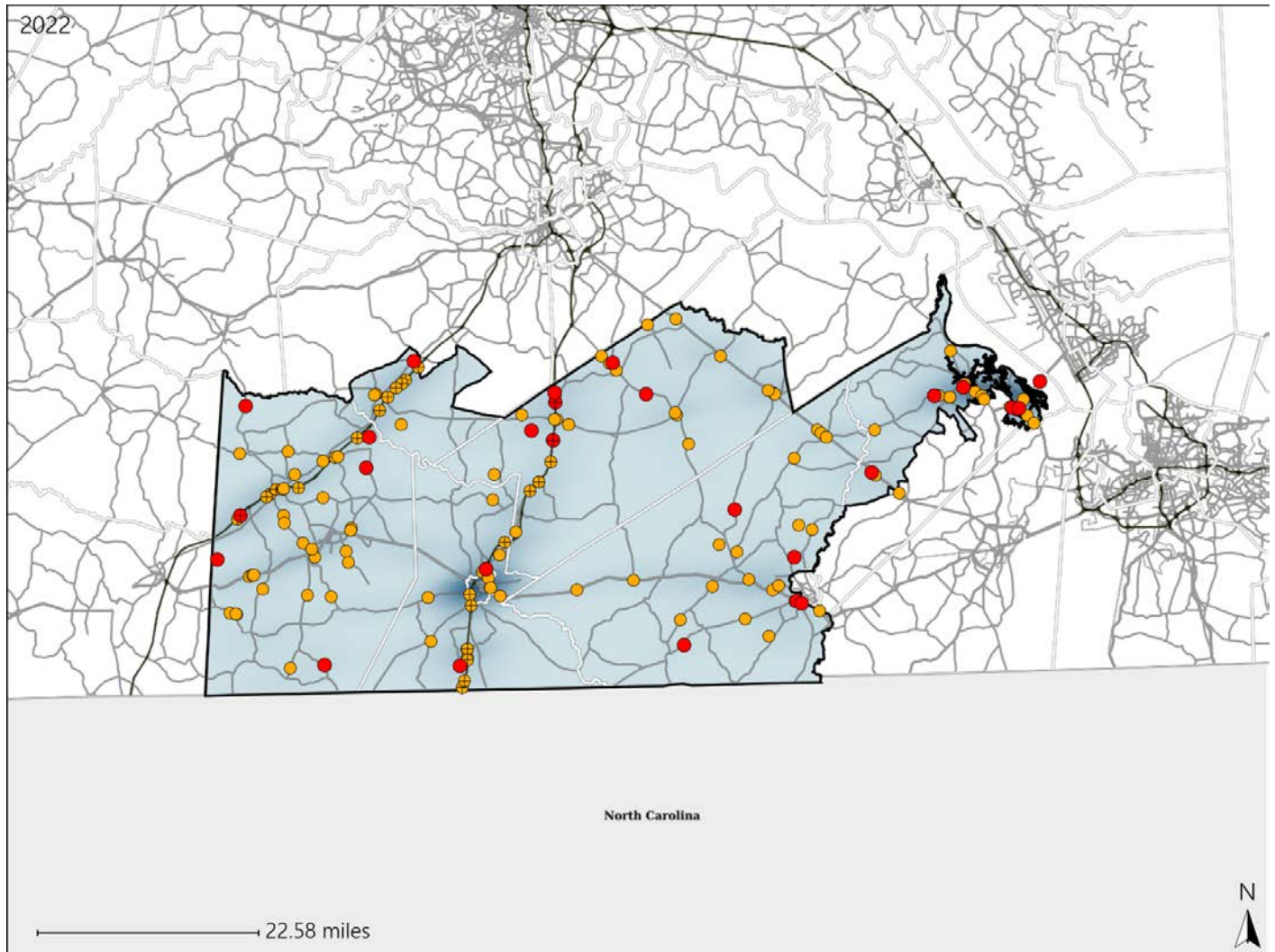


Virginia House District 83 Crash Statistics

Report Generated May, 2023

| | Count | Highest Time Period(s) | Highest Day(s) | Highest Month(s) |
|-------------------------------|------------|----------------------------------|----------------|------------------|
| Fatal Crashes | 27 | 3:00pm - 5:59pm | Saturday | July - June |
| Resulting Fatalities | 28 | (22%) | (26%) | (30%) |
| Serious Injury Crashes | 120 | 3:00pm - 5:59pm Noon - 2:59pm | Saturday | July |
| | | (36%) | (22%) | (13%) |



House District 83 Crashes

Interstate Crashes

- Fatal
- Serious Injury

Non-interstate Crashes

- Fatal
- Serious Injury

The blue gradient represents the density of all crashes.

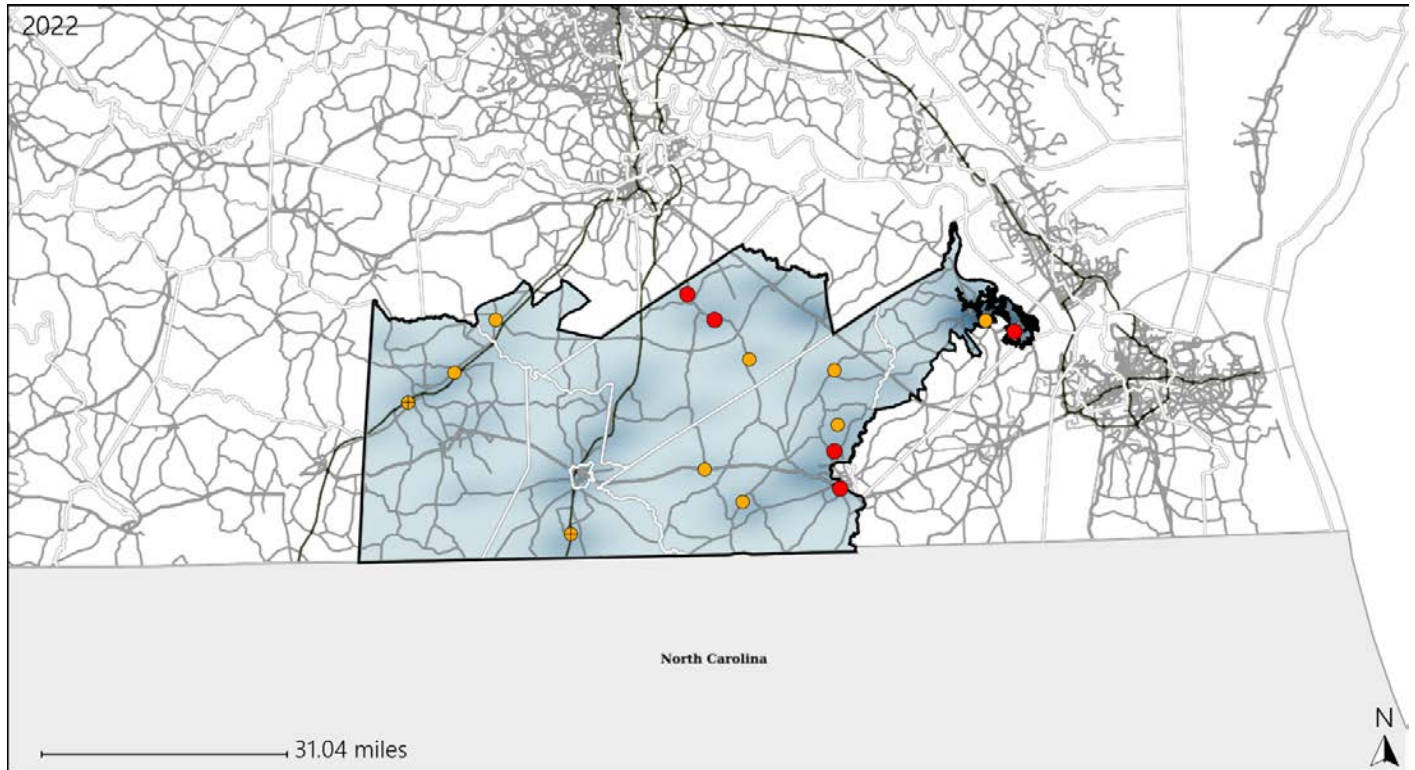


| Available Crash Data - Calendar Year (CY) | CY 2019 | CY 2020 | CY 2021 | CY 2022 |
|---|---------|---------|---------|---------|
| Total Crashes | 1526 | 1717 | 1786 | 1600 |
| Fatal Crashes | 35 | 22 | 39 | 27 |
| Injury Crashes | 503 | 588 | 572 | 555 |

Virginia House District 83 Alcohol Crash Statistics

Report Generated May, 2023

| | Count | Highest Time Period(s) | Highest Day(s) | Highest Month(s) |
|-------------------------------|-----------|--------------------------|-----------------|-------------------------|
| Fatal Crashes | 5 | 9:00pm - 11:59pm | Thursday | June |
| Resulting Fatalities | 5 | (40%) | (40%) | (40%) |
| Serious Injury Crashes | 10 | Midnight - 2:59am | Friday | July • September |
| | | (40%) | (40%) | (40%) |



House District 83 Alcohol-Related Crashes

Interstate Crashes

Non-interstate Crashes

- Fatal
- ⊕ Serious Injury

- Fatal
- Serious Injury

The blue gradient represents the density of all alcohol-related crashes.

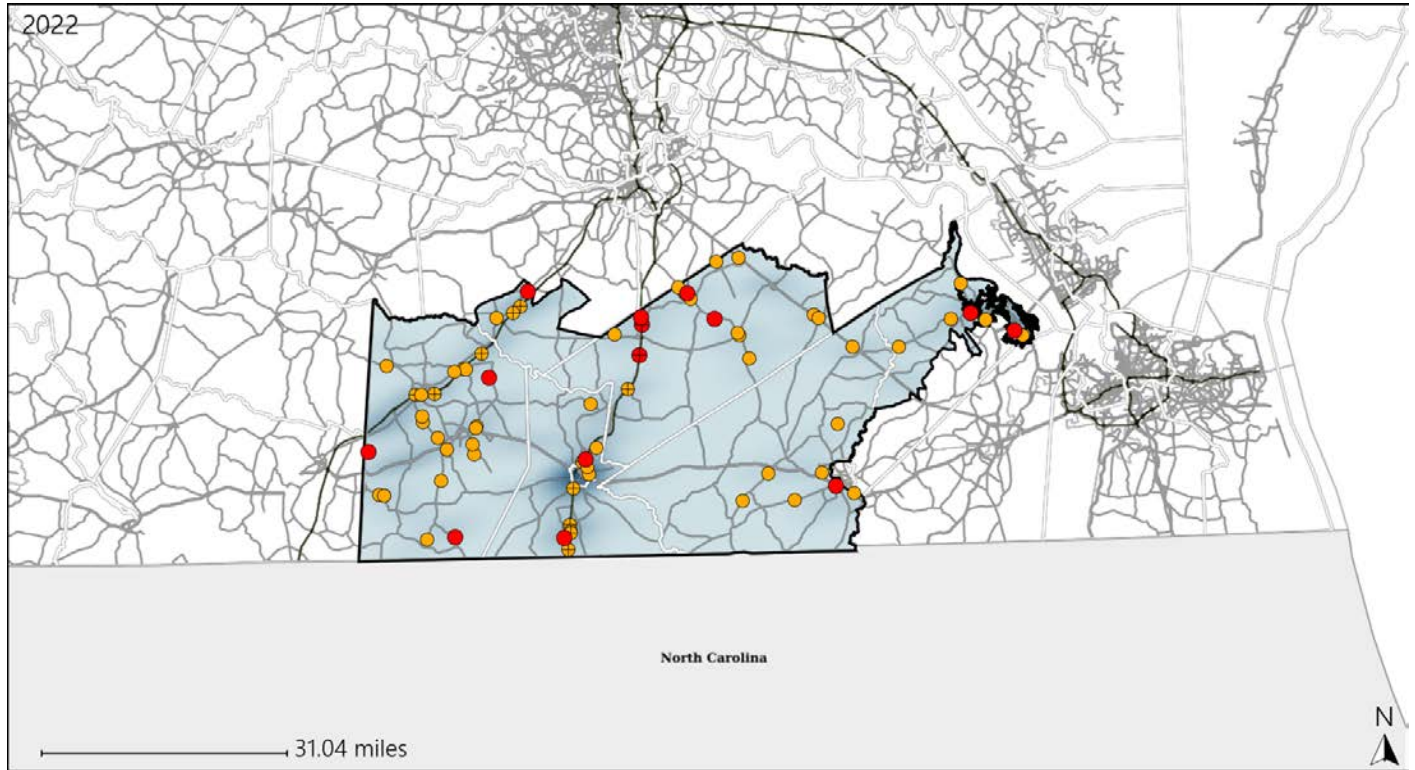


| Available Crash Data - Calendar Year (CY) | CY 2019 | CY 2020 | CY 2021 | CY 2022 |
|--|-------------|-------------|-------------|-------------|
| Total Crashes | 1526 | 1717 | 1786 | 1600 |
| Fatal Crashes | 35 | 22 | 39 | 27 |
| Injury Crashes | 503 | 588 | 572 | 555 |
| Alcohol-Related Fatal Crashes | 10 | 4 | 8 | 5 |
| Percent of Alcohol-Related Fatal Crashes to Total Fatal Crashes | 29% | 18% | 21% | 19% |
| Alcohol-Related Injury Crashes | 47 | 55 | 47 | 32 |
| Percent of Alcohol-Related Injury Crashes to Total Injury Crashes | 9% | 9% | 8% | 6% |

Virginia House District 83 Speed Crash Statistics

Report Generated May, 2023

| | Count | Highest Time Period(s) | Highest Day(s) | Highest Month(s) |
|-------------------------------|-----------|---------------------------|-------------------|--------------------|
| Fatal Crashes | 14 | 3:00pm - 5:59pm | Sunday | July - June |
| Resulting Fatalities | 15 | 9:00am - 11:59am (58%) | (29%) | (42%) |
| Serious Injury Crashes | 58 | 3:00pm - 5:59pm (21%) | Saturday (26%) | September (16%) |



House District 83 Speed-Related Crashes

Interstate Crashes

Non-interstate Crashes

● Fatal

● Fatal

⊕ Serious Injury

● Serious Injury

The blue gradient represents the density of all speed-related crashes.

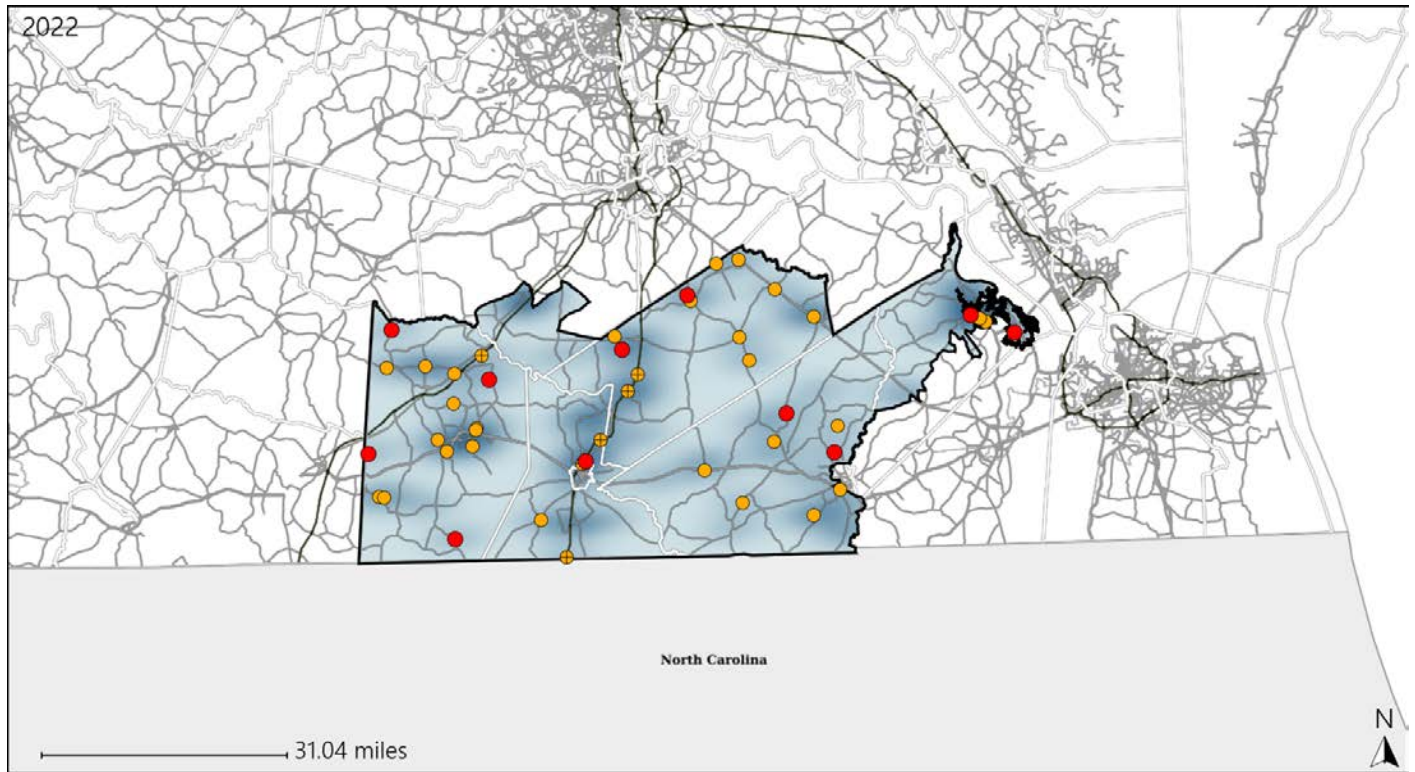


| Available Crash Data - Calendar Year (CY) | CY 2019 | CY 2020 | CY 2021 | CY 2022 |
|---|---------|---------|---------|---------|
| Total Crashes | 1526 | 1717 | 1786 | 1600 |
| Fatal Crashes | 35 | 22 | 39 | 27 |
| Injury Crashes | 503 | 588 | 572 | 555 |
| Speed-Related Fatal Crashes | 13 | 11 | 19 | 14 |
| Percent of Speed-Related Fatal Crashes to Total Fatal Crashes | 37% | 50% | 49% | 52% |
| Speed-Related Injury Crashes | 151 | 162 | 161 | 136 |
| Percent of Speed-Related Injury Crashes to Total Injury Crashes | 30% | 28% | 28% | 25% |

Virginia House District 83 Unrestrained Crash Statistics

Report Generated May, 2023

| | Count | Highest Time Period(s) | Highest Day(s) | Highest Month(s) |
|--------------------------------|-----------|--|--------------------------|------------------|
| Fatal Crashes | 11 | 9:00am - 11:59am | Friday • Saturday | June |
| Unrestrained Fatalities | 11 | (27%) | (54%) | (27%) |
| Serious Injury Crashes | 34 | 3:00pm - 5:59pm 6:00pm - 8:59pm | Saturday | September |
| | | (42%) | (29%) | (15%) |



House District 83 Unrestrained-Related Crashes

- | | |
|--|--|
| Interstate Crashes | Non-interstate Crashes |
| ● Fatal | ● Fatal |
| ⊕ Serious Injury | ● Serious Injury |

The blue gradient represents the density of all unrestrained-related crashes.

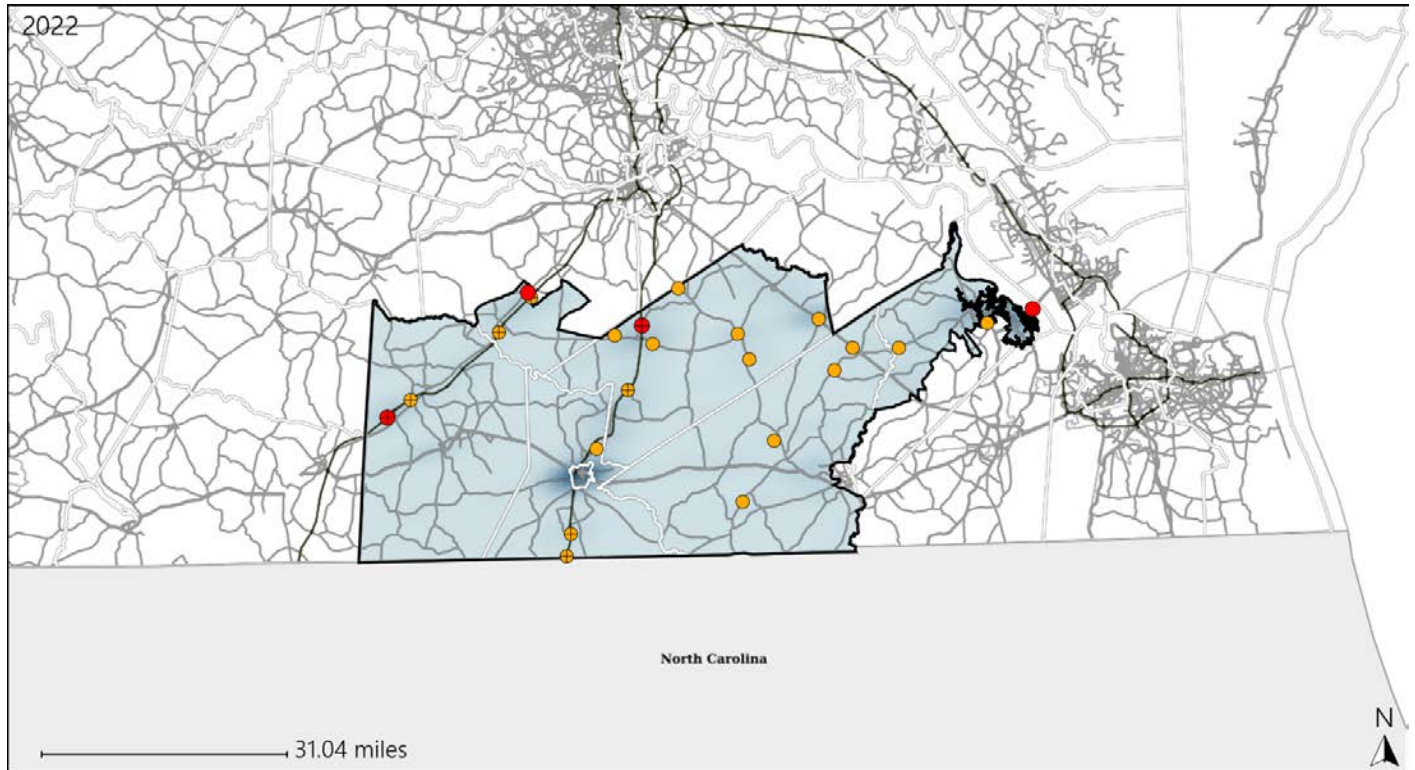


| Available Crash Data - Calendar Year (CY) | CY 2019 | CY 2020 | CY 2021 | CY 2022 |
|---|-------------|-------------|-------------|-------------|
| Total Crashes | 1526 | 1717 | 1786 | 1600 |
| Fatalities | 41 | 26 | 47 | 28 |
| Injuries | 723 | 880 | 869 | 835 |
| Unrestrained Fatalities | 15 | 14 | 16 | 11 |
| Percent of Unrestrained Fatalities to Total Fatalities | 37% | 54% | 34% | 39% |
| Unrestrained Injuries | 96 | 90 | 96 | 95 |
| Percent of Unrestrained Injuries to Total Injuries | 13% | 10% | 11% | 11% |

Virginia House District 83 Distracted Driving Crash Statistics

Report Generated May, 2023

| | Count | Highest Time Period(s) | Highest Day(s) | Highest Month(s) |
|-------------------------------|-----------|--------------------------|----------------------------|------------------|
| Fatal Crashes | 4 | Midnight - 2:59am | Sunday | October |
| Resulting Fatalities | 4 | (50%) | (50%) | (50%) |
| Serious Injury Crashes | 19 | 6:00pm - 8:59pm | Saturday - Thursday | July |
| | | (32%) | (42%) | (21%) |



House District 83 Distracted Driving-Related Crashes

- | | |
|--------------------|------------------------|
| Interstate Crashes | Non-interstate Crashes |
| Fatal | Fatal |
| Serious Injury | Serious Injury |

The blue gradient represents the density of all distracted driving-related crashes.



| Available Crash Data - Calendar Year (CY) | CY 2019 | CY 2020 | CY 2021 | CY 2022 |
|--|---------|---------|---------|---------|
| Total Crashes | 1526 | 1717 | 1786 | 1600 |
| Fatal Crashes | 35 | 22 | 39 | 27 |
| Injury Crashes | 503 | 588 | 572 | 555 |
| Distracted Driving-Related Fatal Crashes | 5 | 0 | 3 | 4 |
| Percent of Distracted Driving-Related Fatal Crashes to Total Fatal Crashes | 14% | 0% | 8% | 15% |
| Distracted Driving-Related Injury Crashes | 114 | 130 | 102 | 106 |
| Percent of Distracted Driving-Related Injury Crashes to Total Injury Crashes | 23% | 22% | 18% | 19% |