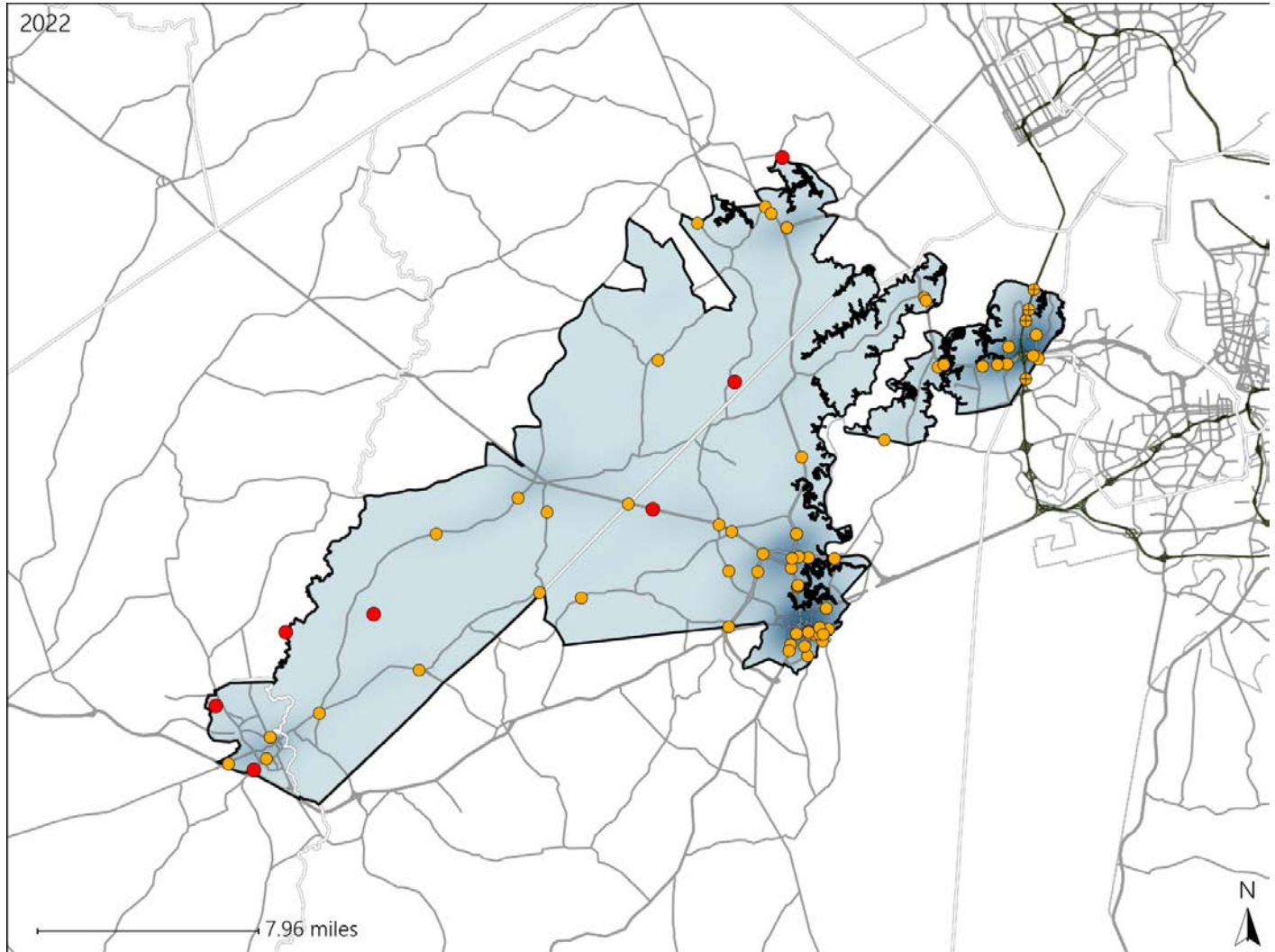


Virginia House District 84 Crash Statistics

Report Generated May, 2023

	Count	Highest Time Period(s)	Highest Day(s)	Highest Month(s)
Fatal Crashes	7	3:00am - 5:59am	Saturday	April • August
Resulting Fatalities	7	3:00pm - 5:59pm (58%)	(43%)	(58%)
Serious Injury Crashes	65	Noon - 2:59pm (26%)	Saturday • Thursday (40%)	April • March (28%)



House District 84 Crashes

Interstate Crashes

- Fatal
- Serious Injury

Non-interstate Crashes

- Fatal
- Serious Injury

The blue gradient represents the density of all crashes.

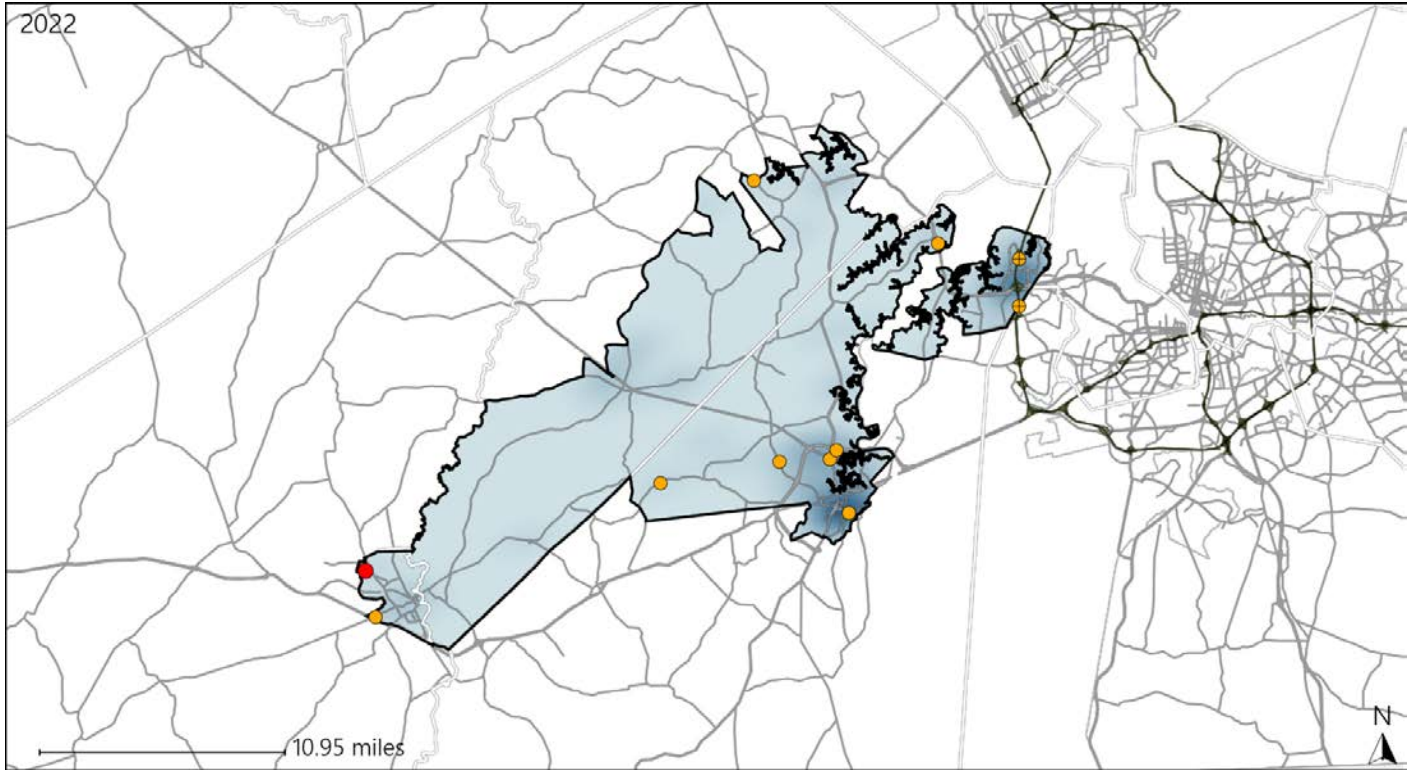


Available Crash Data - Calendar Year (CY)	CY 2019	CY 2020	CY 2021	CY 2022
Total Crashes	1356	1191	1354	1349
Fatal Crashes	5	5	11	7
Injury Crashes	596	542	575	583





Virginia House District 84 Alcohol Crash Statistics

Report Generated May, 2023

	Count	Highest Time Period(s)	Highest Day(s)	Highest Month(s)
Fatal Crashes	1	3:00am - 5:59am	Saturday	July
Resulting Fatalities	1	(100%)	(100%)	(100%)
Serious Injury Crashes	10	9:00pm - 11:59pm	Saturday	April
		(40%)	(40%)	(40%)



House District 84 Alcohol-Related Crashes

Interstate Crashes Non-interstate Crashes
 Fatal  Fatal
 Serious Injury  Serious Injury

The blue gradient represents the density of all alcohol-related crashes.

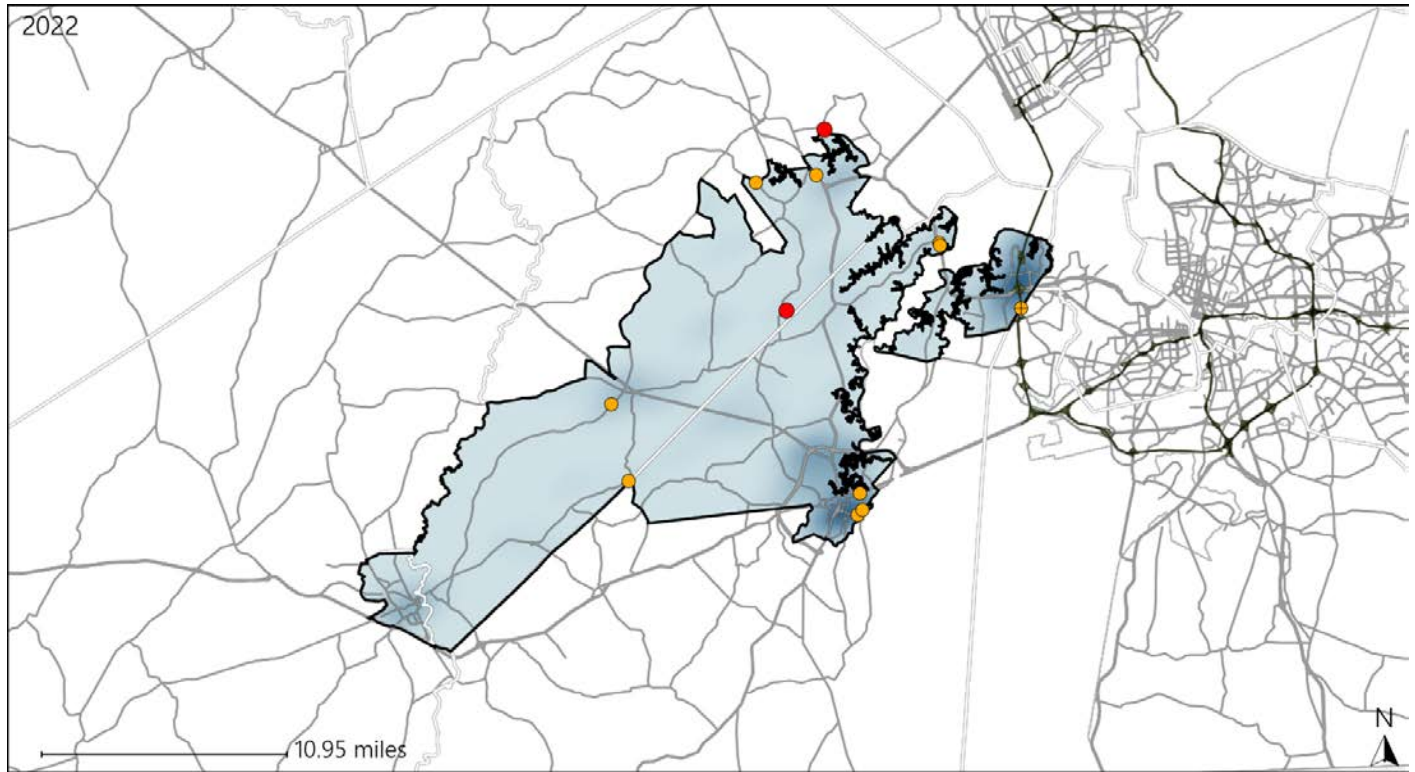


Available Crash Data - Calendar Year (CY)	CY 2019	CY 2020	CY 2021	CY 2022
Total Crashes	1356	1191	1354	1349
Fatal Crashes	5	5	11	7
Injury Crashes	596	542	575	583
Alcohol-Related Fatal Crashes	2	2	2	1
Percent of Alcohol-Related Fatal Crashes to Total Fatal Crashes	40%	40%	18%	14%
Alcohol-Related Injury Crashes	34	37	30	48
Percent of Alcohol-Related Injury Crashes to Total Injury Crashes	6%	7%	5%	8%

Virginia House District 84 Speed Crash Statistics

Report Generated May, 2023

	Count	Highest Time Period(s)	Highest Day(s)	Highest Month(s)
Fatal Crashes	2	3:00pm - 5:59pm	Sunday • Thursday	April • August
Resulting Fatalities	2	(100%)	(100%)	(100%)
Serious Injury Crashes	10	9:00am - 11:59am	Saturday	August • March
		(30%)	(30%)	(60%)




House District 84 Speed-Related Crashes


Interstate Crashes

Non-interstate Crashes

 Fatal

 Fatal

 Serious Injury

 Serious Injury

The blue gradient represents the density of all speed-related crashes.

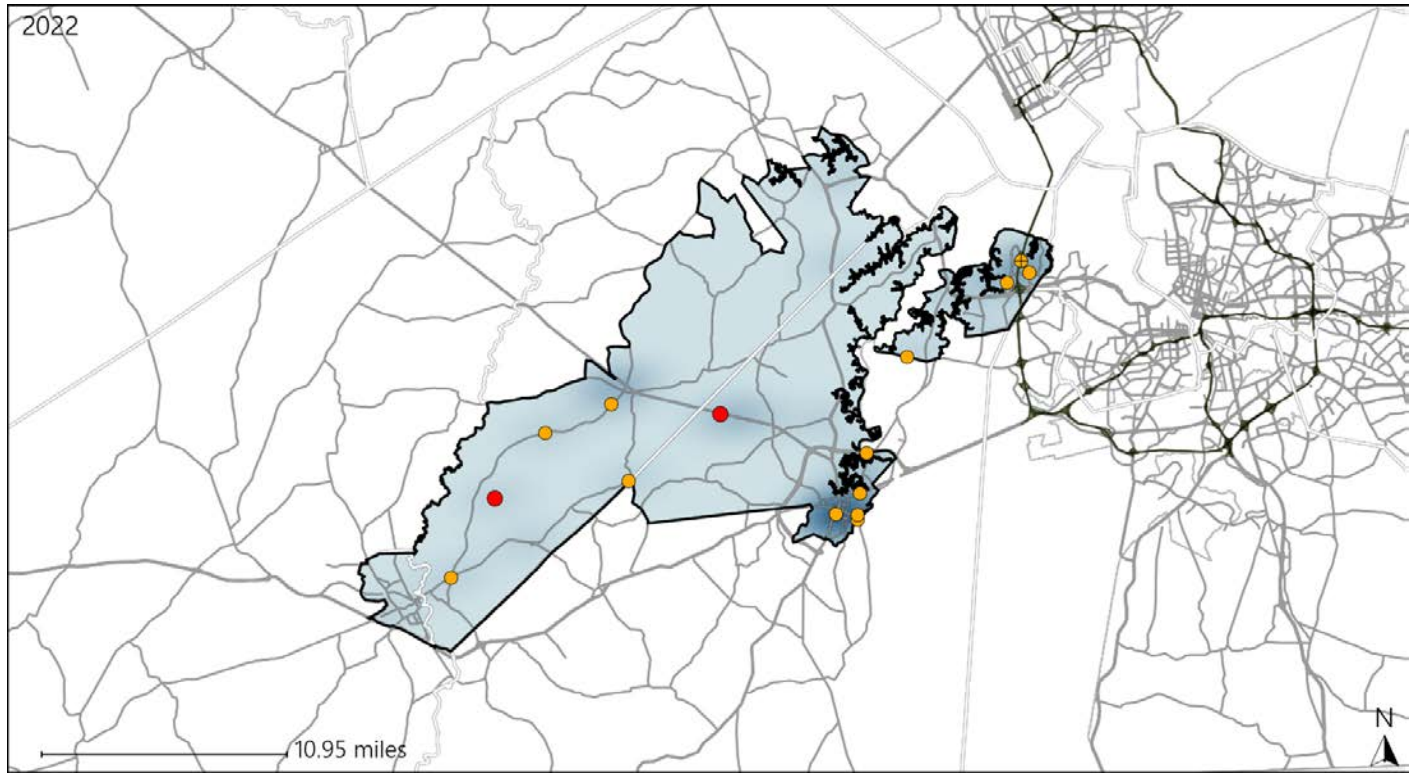


Available Crash Data - Calendar Year (CY)	CY 2019	CY 2020	CY 2021	CY 2022
Total Crashes	1356	1191	1354	1349
Fatal Crashes	5	5	11	7
Injury Crashes	596	542	575	583
Speed-Related Fatal Crashes	2	0	4	2
Percent of Speed-Related Fatal Crashes to Total Fatal Crashes	40%	0%	36%	29%
Speed-Related Injury Crashes	90	82	75	83
Percent of Speed-Related Injury Crashes to Total Injury Crashes	15%	15%	13%	14%

Virginia House District 84 Unrestrained Crash Statistics

Report Generated May, 2023

	Count	Highest Time Period(s)	Highest Day(s)	Highest Month(s)
Fatal Crashes	2	3:00am - 5:59am	Monday • Saturday	April • August
Unrestrained Fatalities	2	6:00am - 8:59am (100%)	(100%)	(100%)
Serious Injury Crashes	13	9:00am - 11:59am Noon - 2:59pm (76%)	Thursday (38%)	September (23%)



House District 84 Unrestrained-Related Crashes

Interstate Crashes

Non-interstate Crashes

● Fatal

● Fatal

⊕ Serious Injury

⊕ Serious Injury

The blue gradient represents the density of all unrestrained-related crashes.

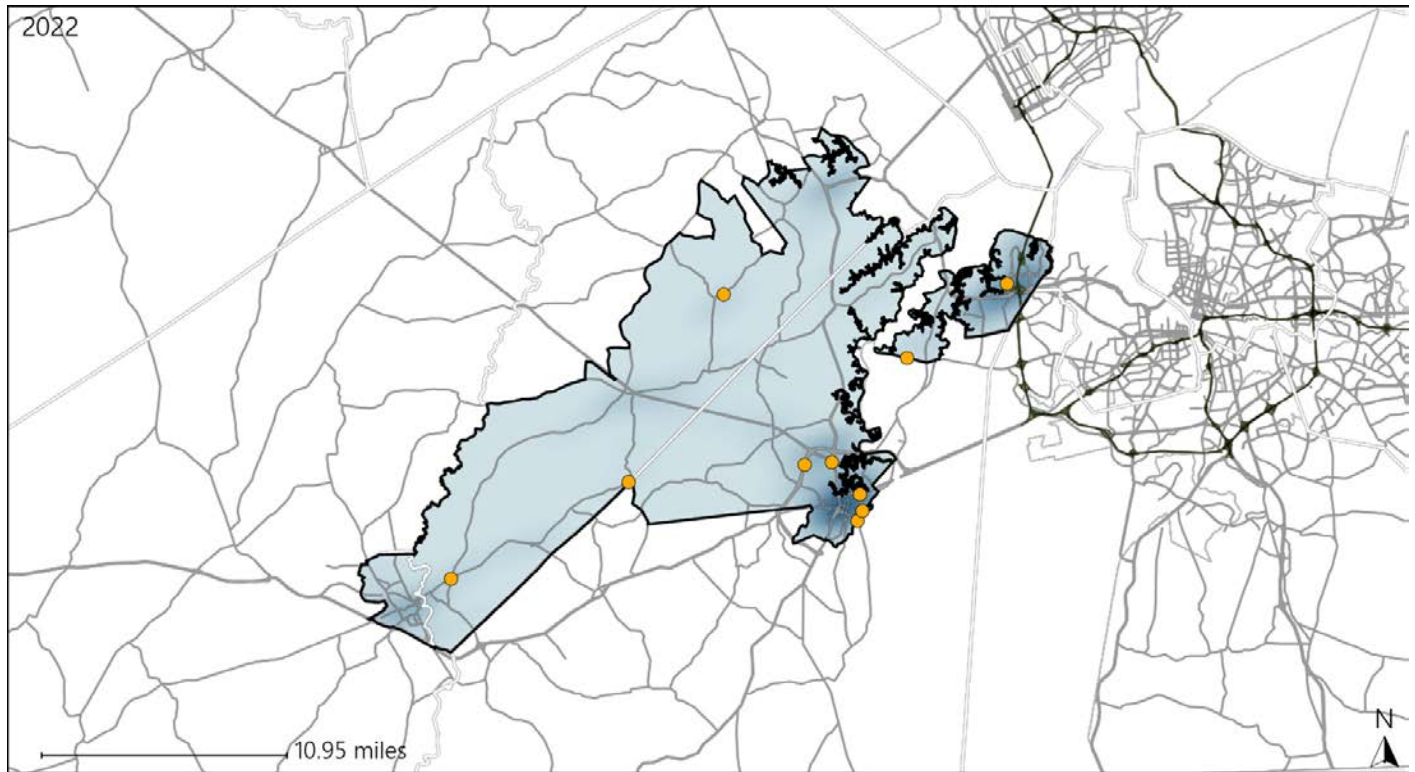


Available Crash Data - Calendar Year (CY)	CY 2019	CY 2020	CY 2021	CY 2022
Total Crashes	1356	1191	1354	1349
Fatalities	5	5	11	7
Injuries	918	788	823	855
Unrestrained Fatalities	1	3	3	2
Percent of Unrestrained Fatalities to Total Fatalities	20%	60%	27%	29%
Unrestrained Injuries	46	38	47	46
Percent of Unrestrained Injuries to Total Injuries	5%	5%	6%	5%

Virginia House District 84 Distracted Driving Crash Statistics

Report Generated May, 2023

	Count	Highest Time Period(s)	Highest Day(s)	Highest Month(s)
Fatal Crashes	0	-	-	-
Resulting Fatalities	0	-	-	-
Serious Injury Crashes	10	6:00pm - 8:59pm 9:00am - 11:59am (60%)	Saturday * Thursday (60%)	September (30%)



House District 84 Distracted Driving-Related Crashes

- | | |
|--------------------|------------------------|
| Interstate Crashes | Non-interstate Crashes |
| ● Fatal | ● Fatal |
| ⊕ Serious Injury | ⊕ Serious Injury |

The blue gradient represents the density of all distracted driving-related crashes.



Available Crash Data - Calendar Year (CY)	CY 2019	CY 2020	CY 2021	CY 2022
Total Crashes	1356	1191	1354	1349
Fatal Crashes	5	5	11	7
Injury Crashes	596	542	575	583
Distracted Driving-Related Fatal Crashes	1	1	5	0
Percent of Distracted Driving-Related Fatal Crashes to Total Fatal Crashes	20%	20%	45%	0%
Distracted Driving-Related Injury Crashes	99	91	96	94
Percent of Distracted Driving-Related Injury Crashes to Total Injury Crashes	17%	17%	17%	16%