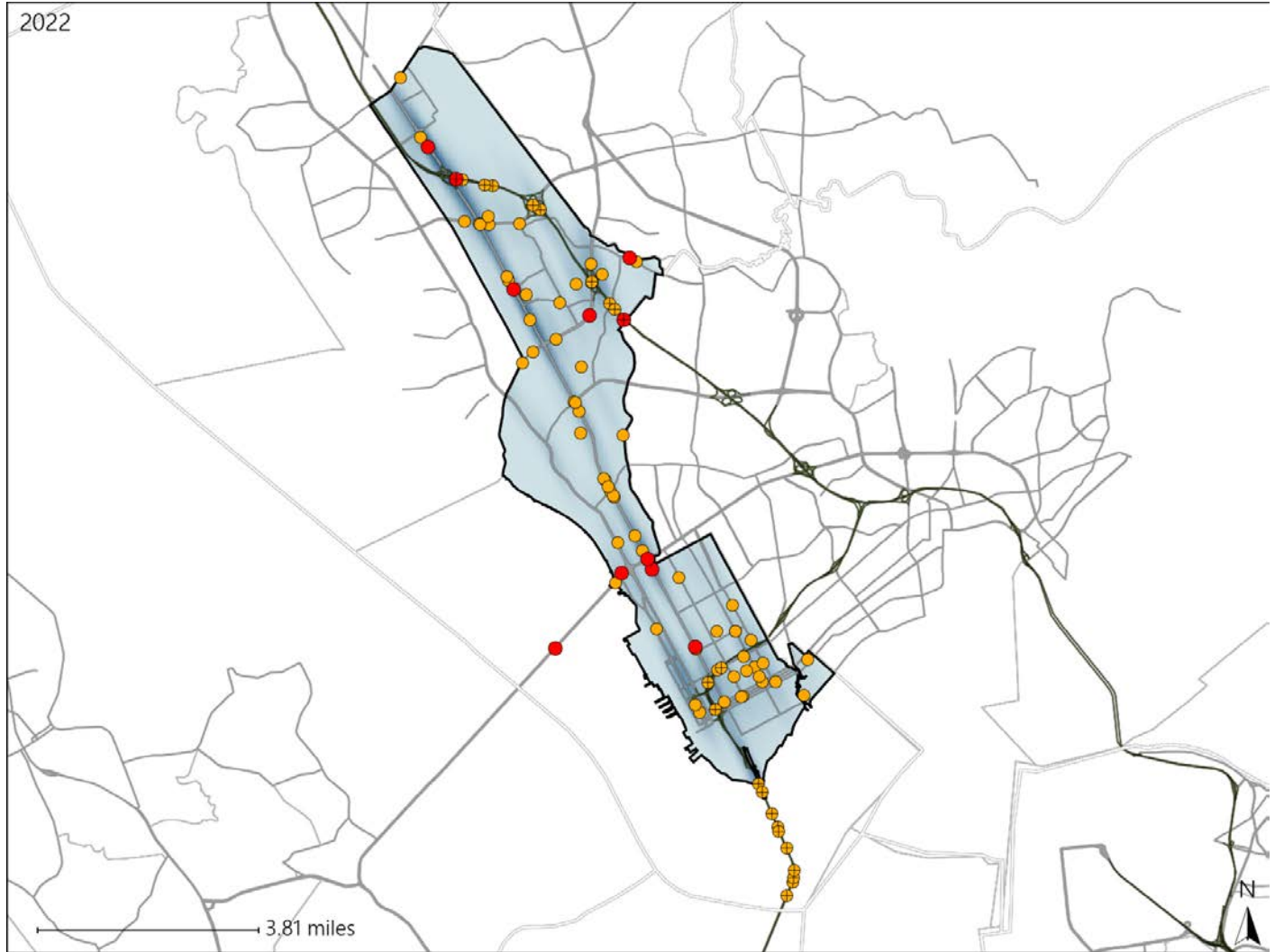


# Virginia House District 85 Crash Statistics

Report Generated May, 2023

	Count	Highest Time Period(s)	Highest Day(s)	Highest Month(s)
<b>Fatal Crashes</b>	<b>11</b>	<b>6:00pm - 8:59pm</b>	<b>Friday</b>	<b>August • December</b>
<b>Resulting Fatalities</b>	<b>11</b>	(27%)	(27%)	(36%)
<b>Serious Injury Crashes</b>	<b>82</b>	<b>Noon - 2:59pm</b>	<b>Friday</b>	<b>September</b>
		(26%)	(23%)	(17%)



### House District 85 Crashes

Interstate Crashes

- Fatal
- Serious Injury

Non-interstate Crashes

- Fatal
- Serious Injury

The blue gradient represents the density of all crashes.

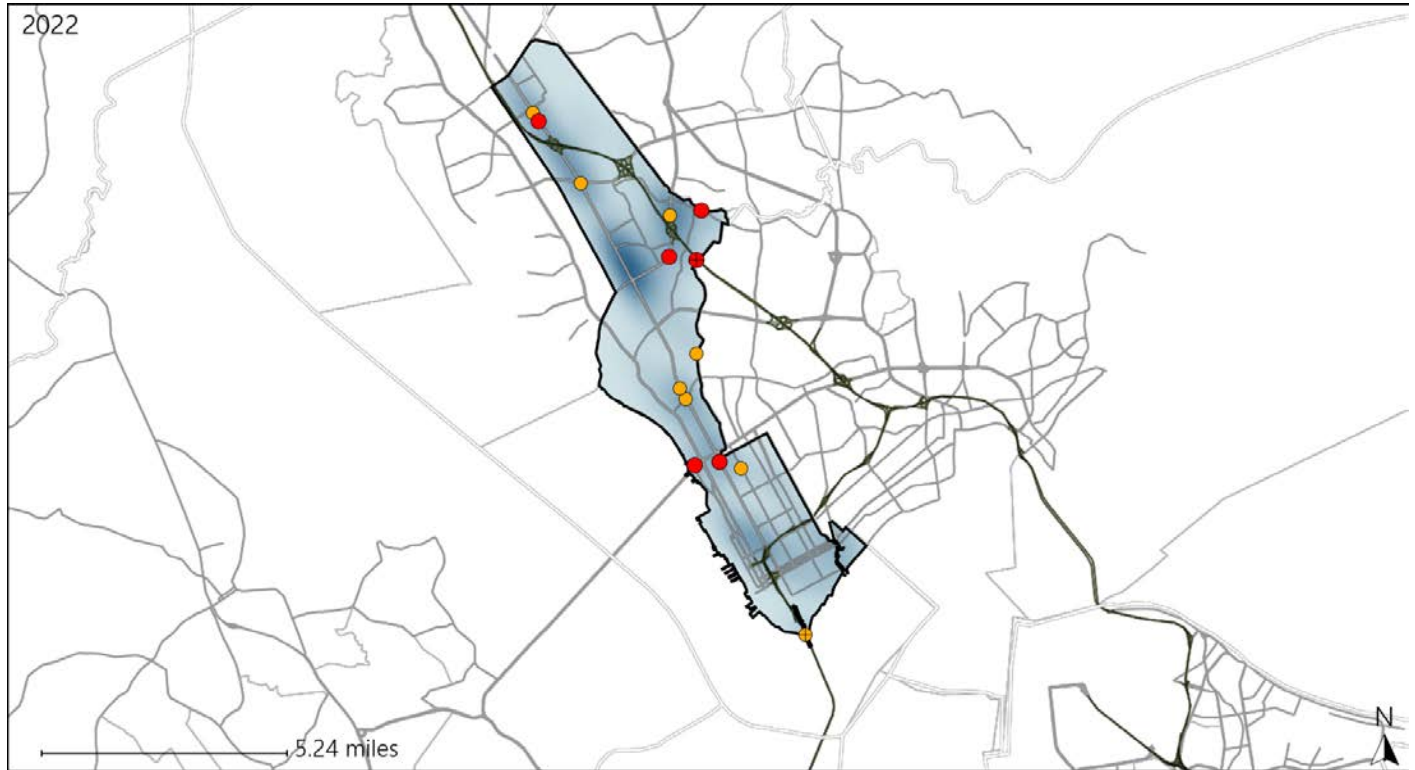


Available Crash Data - Calendar Year (CY)	CY 2019	CY 2020	CY 2021	CY 2022
<b>Total Crashes</b>	<b>2440</b>	<b>2117</b>	<b>2410</b>	<b>2336</b>
<b>Fatal Crashes</b>	<b>13</b>	<b>16</b>	<b>9</b>	<b>11</b>
<b>Injury Crashes</b>	<b>1047</b>	<b>874</b>	<b>899</b>	<b>665</b>

# Virginia House District 85 Alcohol Crash Statistics

Report Generated May, 2023

	Count	Highest Time Period(s)	Highest Day(s)	Highest Month(s)
<b>Fatal Crashes</b>	<b>6</b>	<b>6:00pm - 8:59pm</b>	<b>Friday • Sunday</b>	<b>May</b>
<b>Resulting Fatalities</b>	<b>6</b>	<b>Midnight - 2:59am</b> (66%)	<b>(66%)</b>	<b>(33%)</b>
<b>Serious Injury Crashes</b>	<b>8</b>	<b>Midnight - 2:59am</b> (50%)	<b>Saturday • Wednesday</b> (50%)	<b>April • August</b> (50%)



### House District 85 Alcohol-Related Crashes

Interstate Crashes                      Non-interstate Crashes  
 ● Fatal                                      ● Fatal  
 ⊕ Serious Injury                          ⊕ Serious Injury

The blue gradient represents the density of all alcohol-related crashes.

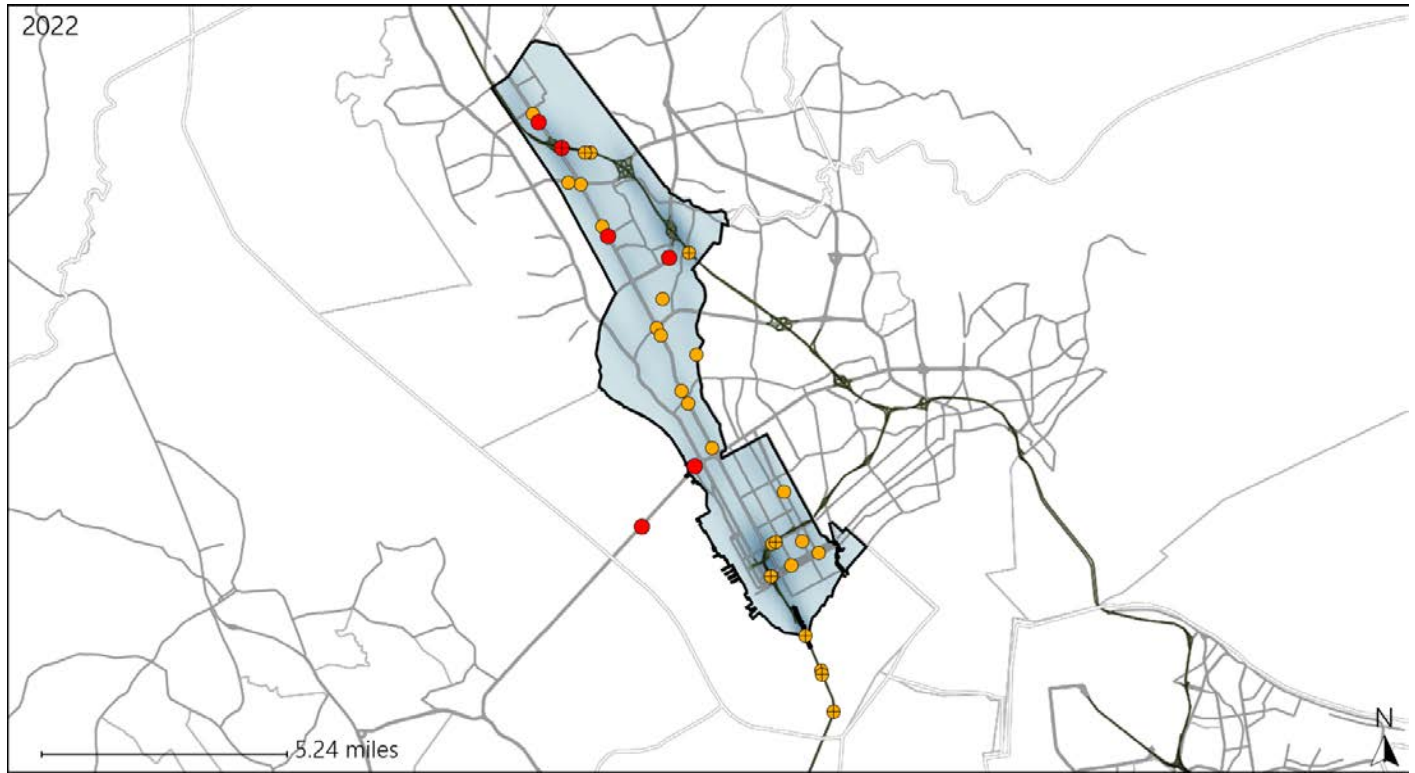


Available Crash Data - Calendar Year (CY)	CY 2019	CY 2020	CY 2021	CY 2022
Total Crashes	2440	2117	2410	2336
Fatal Crashes	13	16	9	11
Injury Crashes	1047	874	899	665
Alcohol-Related Fatal Crashes	8	8	3	6
Percent of Alcohol-Related Fatal Crashes to Total Fatal Crashes	62%	50%	33%	55%
Alcohol-Related Injury Crashes	76	56	85	36
Percent of Alcohol-Related Injury Crashes to Total Injury Crashes	7%	6%	9%	5%

# Virginia House District 85 Speed Crash Statistics

Report Generated May, 2023

	Count	Highest Time Period(s)	Highest Day(s)	Highest Month(s)
<b>Fatal Crashes</b>	<b>6</b>	<b>6:00pm - 8:59pm</b>	<b>Sunday</b>	<b>August</b>
<b>Resulting Fatalities</b>	<b>6</b>	<b>Midnight - 2:59am</b> (66%)	<b>(33%)</b>	<b>(33%)</b>
<b>Serious Injury Crashes</b>	<b>25</b>	<b>3:00pm - 5:59pm</b> <b>Noon - 2:59pm</b> (48%)	<b>Saturday</b> (24%)	<b>April + August</b> (24%)



### House District 85 Speed-Related Crashes

Interstate Crashes                      Non-interstate Crashes  
 ● Fatal                                      ● Fatal  
 ⊕ Serious Injury                          ⊕ Serious Injury

The blue gradient represents the density of all speed-related crashes.

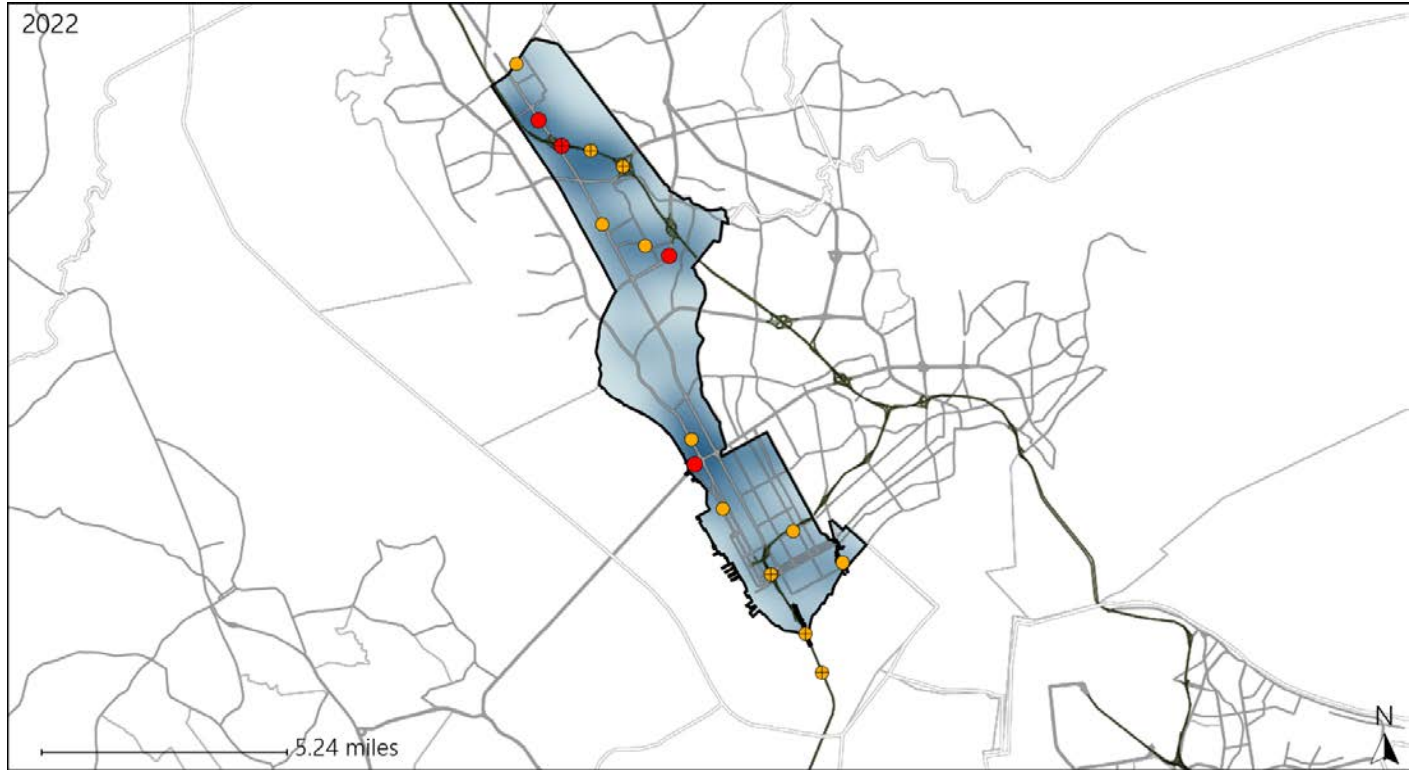


Available Crash Data - Calendar Year (CY)	CY 2019	CY 2020	CY 2021	CY 2022
Total Crashes	2440	2117	2410	2336
Fatal Crashes	13	16	9	11
Injury Crashes	1047	874	899	665
Speed-Related Fatal Crashes	7	8	4	6
Percent of Speed-Related Fatal Crashes to Total Fatal Crashes	54%	50%	44%	55%
Speed-Related Injury Crashes	160	168	161	146
Percent of Speed-Related Injury Crashes to Total Injury Crashes	15%	19%	18%	22%

# Virginia House District 85 Unrestrained Crash Statistics

Report Generated May, 2023

	Count	Highest Time Period(s)	Highest Day(s)	Highest Month(s)
<b>Fatal Crashes</b>	<b>4</b>	<b>Midnight - 2:59am</b>	<b>Sunday</b>	<b>August + June</b>
<b>Unrestrained Fatalities</b>	<b>4</b>	(50%)	(50%)	(50%)
<b>Serious Injury Crashes</b>	<b>12</b>	<b>6:00am - 8:59am</b>	<b>Tuesday</b>	<b>October</b>
		(25%)	(42%)	(25%)



## House District 85 Unrestrained-Related Crashes

Interstate Crashes

Non-interstate Crashes

- Fatal
- Serious Injury

- Fatal
- Serious Injury

The blue gradient represents the density of all unrestrained-related crashes.



Available Crash Data - Calendar Year (CY)	CY 2019	CY 2020	CY 2021	CY 2022
<b>Total Crashes</b>	<b>2440</b>	<b>2117</b>	<b>2410</b>	<b>2336</b>
<b>Fatalities</b>	<b>13</b>	<b>17</b>	<b>9</b>	<b>11</b>
<b>Injuries</b>	<b>1528</b>	<b>1246</b>	<b>1317</b>	<b>1085</b>
<b>Unrestrained Fatalities</b>	<b>2</b>	<b>7</b>	<b>1</b>	<b>4</b>
<b>Percent of Unrestrained Fatalities to Total Fatalities</b>	<b>15%</b>	<b>41%</b>	<b>11%</b>	<b>36%</b>
<b>Unrestrained Injuries</b>	<b>54</b>	<b>45</b>	<b>73</b>	<b>42</b>
<b>Percent of Unrestrained Injuries to Total Injuries</b>	<b>4%</b>	<b>4%</b>	<b>6%</b>	<b>4%</b>

# Virginia House District 85 Pedestrian Crash Statistics

Report Generated May, 2023

	Count	Highest Time Period(s)	Highest Day(s)	Highest Month(s)
<b>Fatal Crashes</b>	<b>3</b>	3:00am - 5:59am	Friday • Monday	August • December
<b>Pedestrian Fatalities</b>	<b>3</b>	9:00am - 11:59am (66%)	(66%)	(66%)
<b>Serious Injury Crashes</b>	<b>14</b>	6:00pm - 8:59pm Noon - 2:59pm (42%)	Wednesday (29%)	September (21%)



### House District 85 Pedestrian-Related Crashes

Interstate Crashes                      Non-interstate Crashes  
 ● Fatal                                      ● Fatal  
 ⊕ Serious Injury                          ⊕ Serious Injury

The blue gradient represents the density of all pedestrian-related crashes.

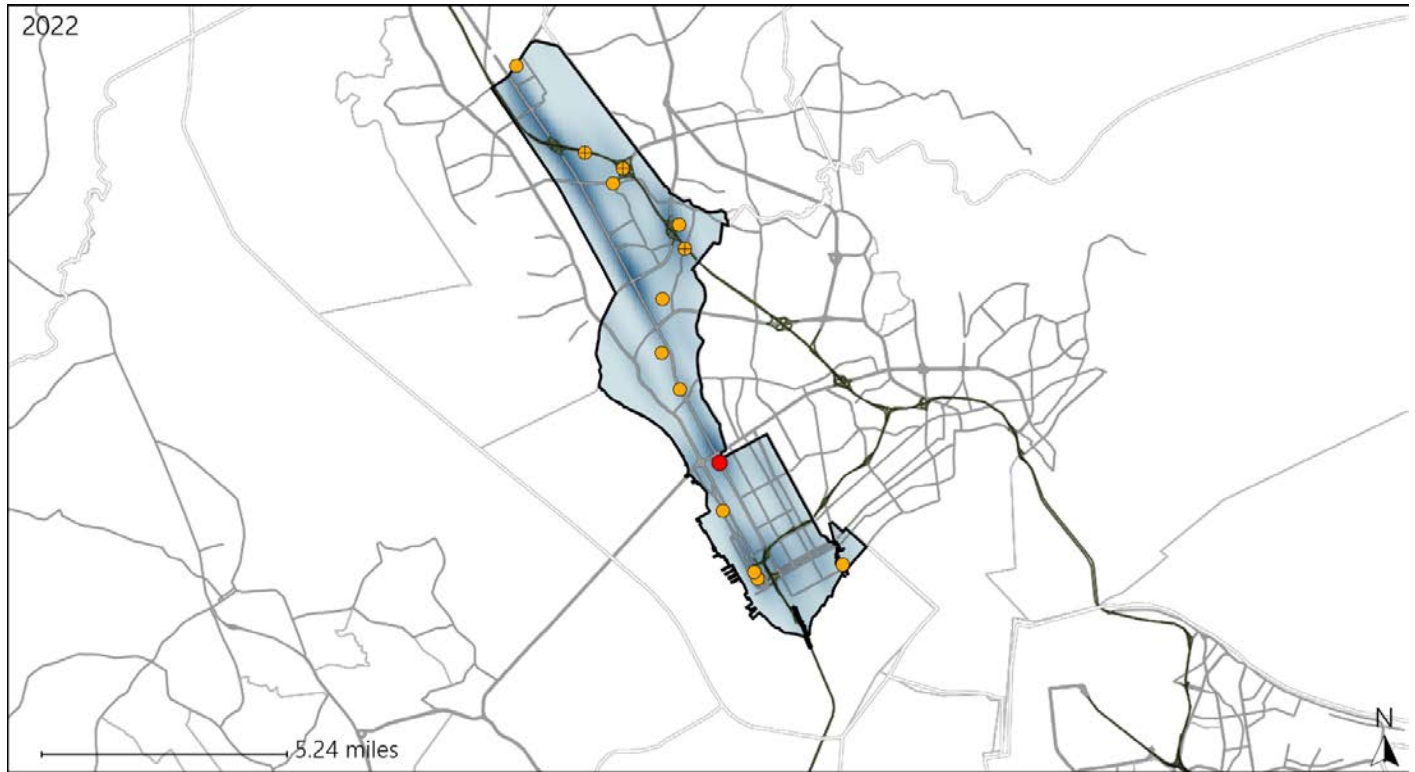


Available Crash Data - Calendar Year (CY)	CY 2019	CY 2020	CY 2021	CY 2022
Total Crashes	2440	2117	2410	2336
Fatal Crashes	13	16	9	11
Injury Crashes	1047	874	899	665
Pedestrian-Related Fatal Crashes	3	3	6	3
Percent of Pedestrian-Related Fatal Crashes to Total Fatal Crashes	23%	19%	67%	27%
Pedestrian-Related Injury Crashes	42	23	41	37
Percent of Pedestrian-Related Injury Crashes to Total Injury Crashes	4%	3%	5%	6%

# Virginia House District 85 Distracted Driving Crash Statistics

Report Generated May, 2023

	Count	Highest Time Period(s)	Highest Day(s)	Highest Month(s)
<b>Fatal Crashes</b>	<b>1</b>	<b>9:00pm - 11:59pm</b>	<b>Friday</b>	<b>December</b>
<b>Resulting Fatalities</b>	<b>1</b>	(100%)	(100%)	(100%)
<b>Serious Injury Crashes</b>	<b>13</b>	<b>Noon - 2:59pm</b>	<b>Tuesday</b>	<b>February • June</b>
		(31%)	(23%)	(30%)



## House District 85 Distracted Driving-Related Crashes

- |  |  |
|--|--|
| Interstate Crashes   | Non-interstate Crashes   |
|  Fatal          |  Fatal          |
|  Serious Injury |  Serious Injury |

The blue gradient represents the density of all distracted driving-related crashes.



Available Crash Data - Calendar Year (CY)	CY 2019	CY 2020	CY 2021	CY 2022
Total Crashes	2440	2117	2410	2336
Fatal Crashes	13	16	9	11
Injury Crashes	1047	874	899	665
Distracted Driving-Related Fatal Crashes	1	1	1	1
Percent of Distracted Driving-Related Fatal Crashes to Total Fatal Crashes	8%	6%	11%	9%
Distracted Driving-Related Injury Crashes	296	194	238	123
Percent of Distracted Driving-Related Injury Crashes to Total Injury Crashes	28%	22%	26%	18%