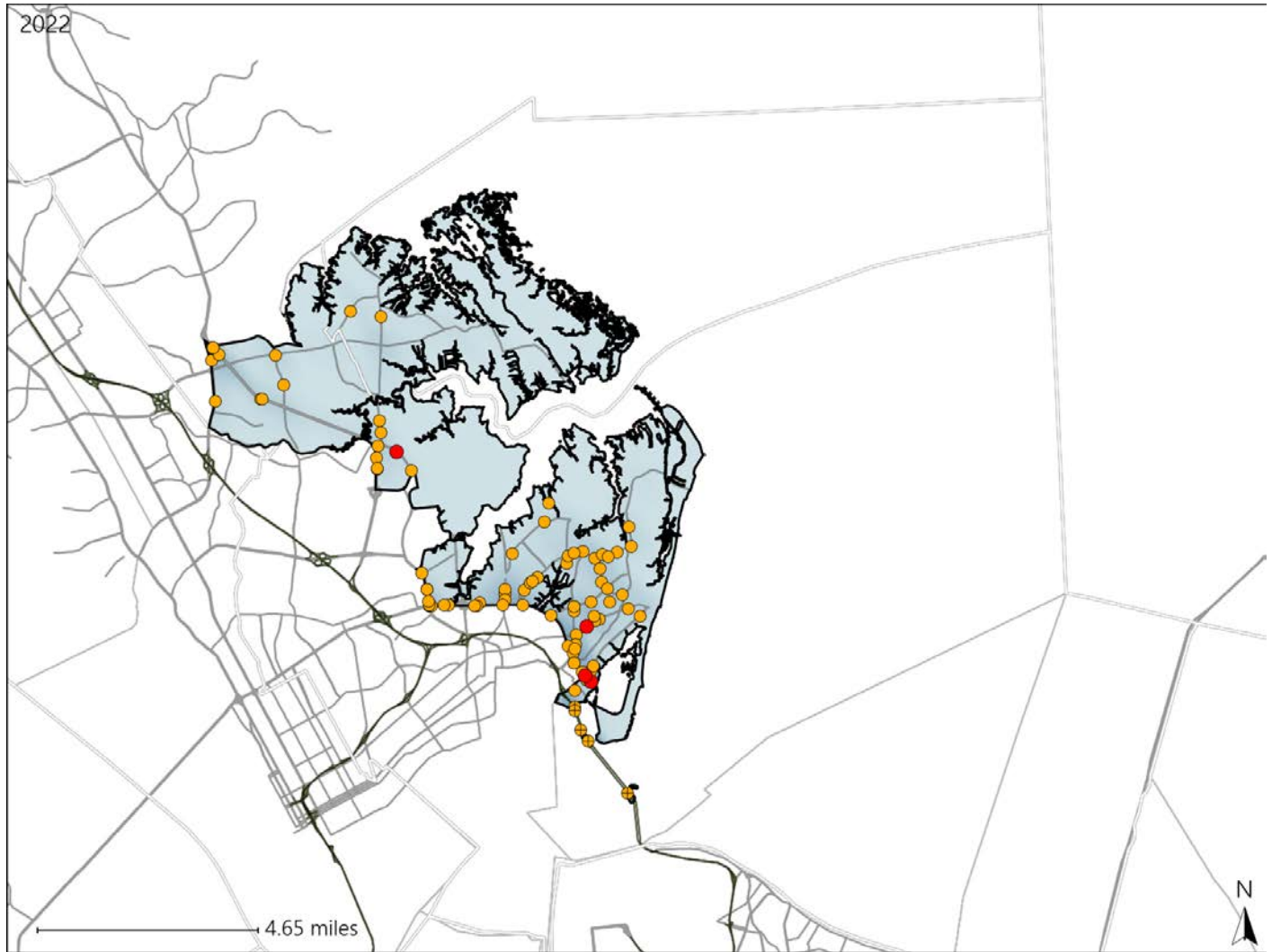


Virginia House District 86 Crash Statistics

Report Generated May, 2023

	Count	Highest Time Period(s)	Highest Day(s)	Highest Month(s)
Fatal Crashes	4	9:00pm - 11:59pm	Thursday	August + June
Resulting Fatalities	5	(50%)	(50%)	(50%)
Serious Injury Crashes	92	6:00pm - 8:59pm	Wednesday	August + May
		(20%)	(20%)	(28%)



House District 86 Crashes

Interstate Crashes

- Fatal
- Serious Injury

Non-interstate Crashes

- Fatal
- Serious Injury

The blue gradient represents the density of all crashes.

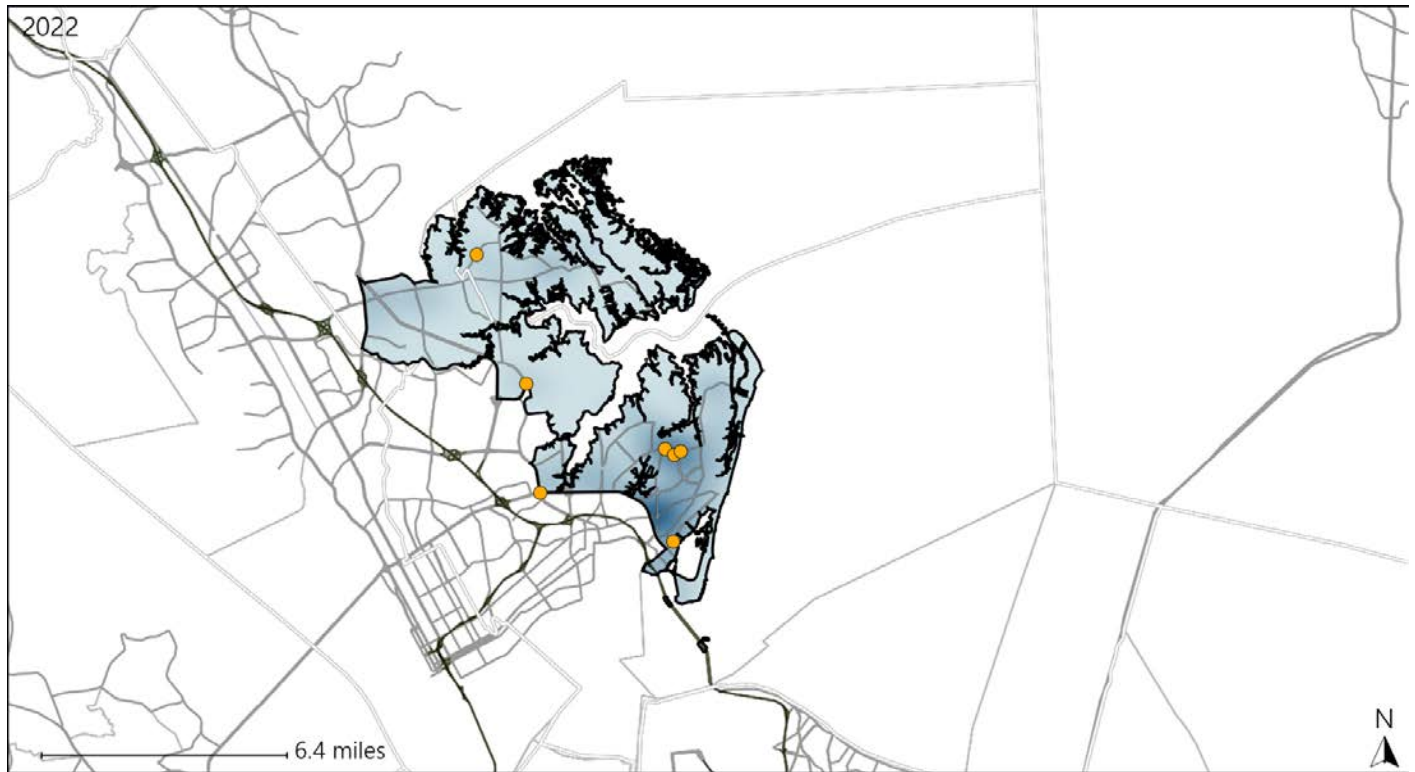


Available Crash Data - Calendar Year (CY)	CY 2019	CY 2020	CY 2021	CY 2022
Total Crashes	1111	1089	1243	1083
Fatal Crashes	5	6	1	4
Injury Crashes	538	553	668	500

Virginia House District 86 Alcohol Crash Statistics

Report Generated May, 2023

	Count	Highest Time Period(s)	Highest Day(s)	Highest Month(s)
Fatal Crashes	0	-	-	-
Resulting Fatalities	0	-	-	-
Serious Injury Crashes	7	6:00pm - 8:59pm Midnight - 2:59am (86%)	Monday (29%)	June (43%)



House District 86 Alcohol-Related Crashes

Interstate Crashes Non-interstate Crashes
 ● Fatal ● Fatal
 ⊕ Serious Injury ⊕ Serious Injury

The blue gradient represents the density of all alcohol-related crashes.

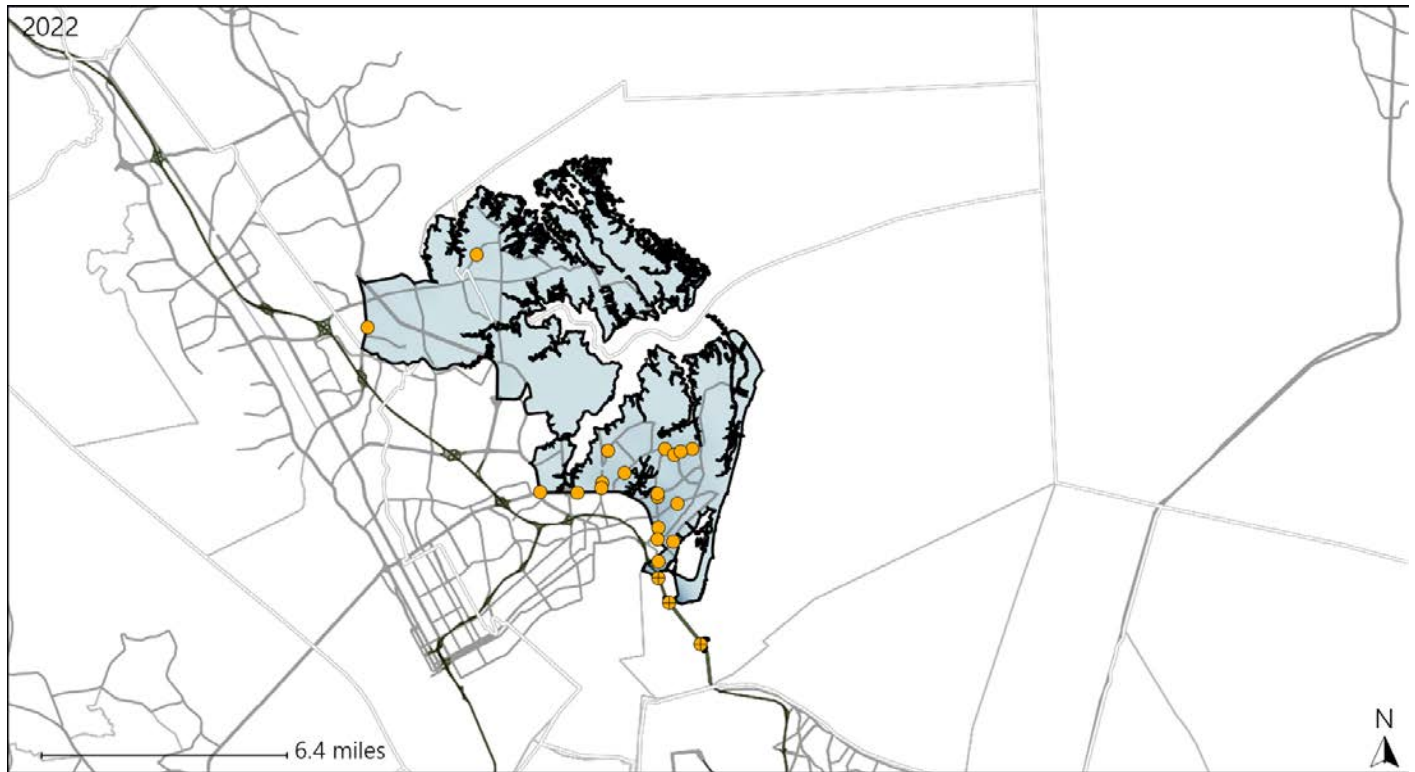


Available Crash Data - Calendar Year (CY)	CY 2019	CY 2020	CY 2021	CY 2022
Total Crashes	1111	1089	1243	1083
Fatal Crashes	5	6	1	4
Injury Crashes	538	553	668	500
Alcohol-Related Fatal Crashes	3	3	0	0
Percent of Alcohol-Related Fatal Crashes to Total Fatal Crashes	60%	50%	0%	0%
Alcohol-Related Injury Crashes	43	32	50	37
Percent of Alcohol-Related Injury Crashes to Total Injury Crashes	8%	6%	7%	7%

Virginia House District 86 Speed Crash Statistics

Report Generated May, 2023

	Count	Highest Time Period(s)	Highest Day(s)	Highest Month(s)
Fatal Crashes	0	-	-	-
Resulting Fatalities	0	-	-	-
Serious Injury Crashes	22	6:00pm - 8:59pm Midnight - 2:59am (46%)	Thursday (23%)	June • May (46%)



House District 86 Speed-Related Crashes

Interstate Crashes Non-interstate Crashes
 ● Fatal ● Fatal
 ⊕ Serious Injury ⊕ Serious Injury

The blue gradient represents the density of all speed-related crashes.

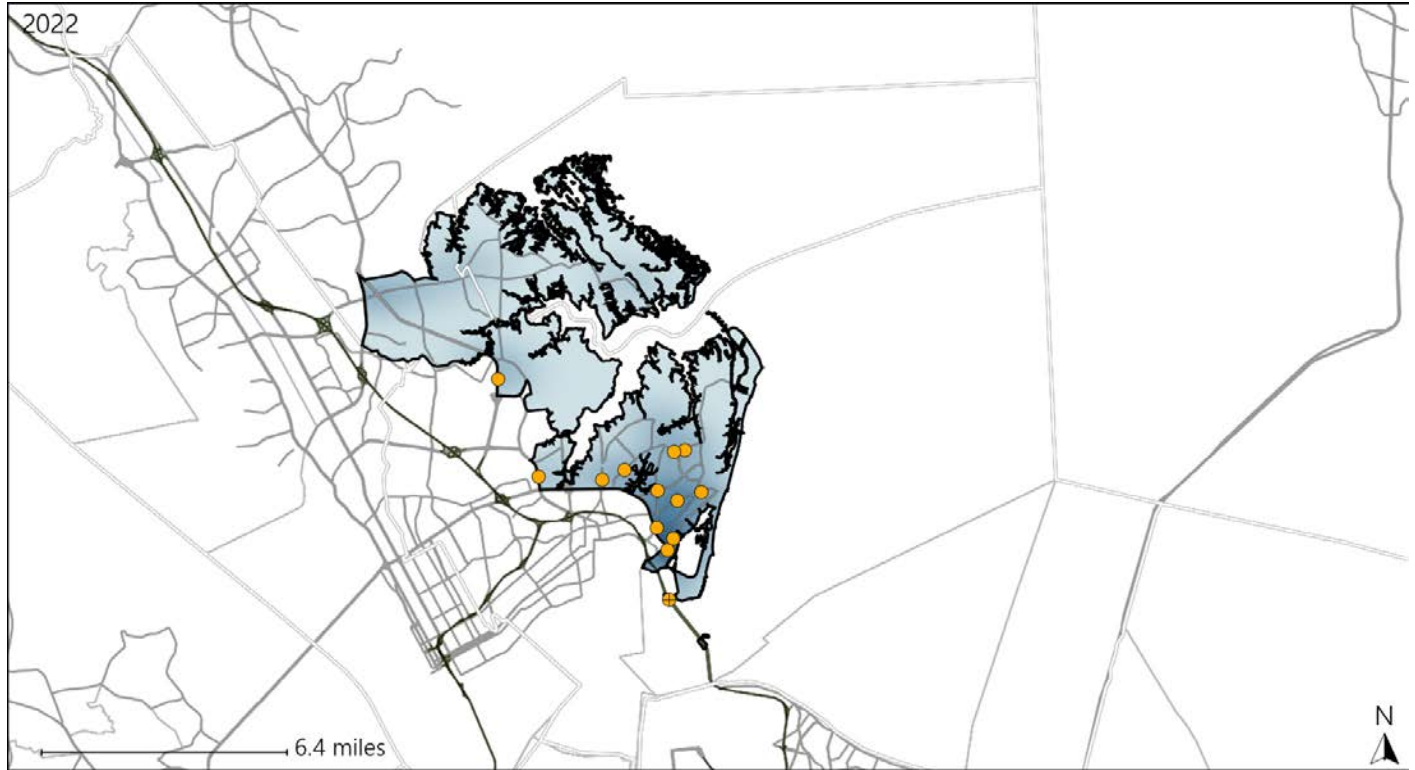


Available Crash Data - Calendar Year (CY)	CY 2019	CY 2020	CY 2021	CY 2022
Total Crashes	1111	1089	1243	1083
Fatal Crashes	5	6	1	4
Injury Crashes	538	553	668	500
Speed-Related Fatal Crashes	1	3	1	0
Percent of Speed-Related Fatal Crashes to Total Fatal Crashes	20%	50%	100%	0%
Speed-Related Injury Crashes	66	90	85	84
Percent of Speed-Related Injury Crashes to Total Injury Crashes	12%	16%	13%	17%

Virginia House District 86 Unrestrained Crash Statistics

Report Generated May, 2023

	Count	Highest Time Period(s)	Highest Day(s)	Highest Month(s)
Fatal Crashes	0	-	-	-
Unrestrained Fatalities	0	-	-	-
Serious Injury Crashes	13	Midnight - 2:59am (31%)	Wednesday (23%)	June (38%)



House District 86 Unrestrained-Related Crashes

Interstate Crashes

Non-interstate Crashes

- Fatal
- Serious Injury

- Fatal
- Serious Injury

The blue gradient represents the density of all unrestrained-related crashes.

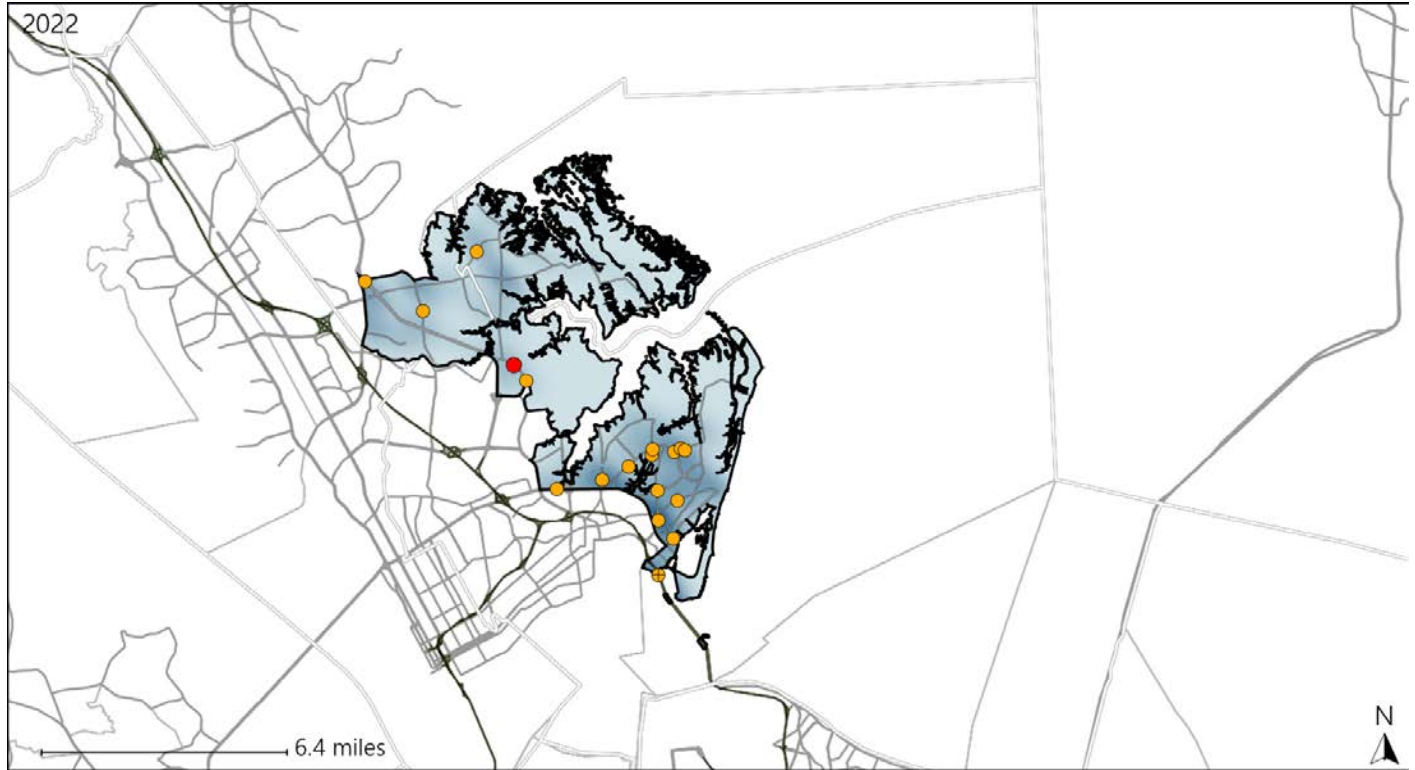


Available Crash Data - Calendar Year (CY)	CY 2019	CY 2020	CY 2021	CY 2022
Total Crashes	1111	1089	1243	1083
Fatalities	5	6	1	5
Injuries	893	950	1129	840
Unrestrained Fatalities	2	4	0	0
Percent of Unrestrained Fatalities to Total Fatalities	40%	67%	0%	0%
Unrestrained Injuries	21	27	35	31
Percent of Unrestrained Injuries to Total Injuries	2%	3%	3%	4%

Virginia House District 86 Distracted Driving Crash Statistics

Report Generated May, 2023

	Count	Highest Time Period(s)	Highest Day(s)	Highest Month(s)
Fatal Crashes	1	9:00pm - 11:59pm	Thursday	June
Resulting Fatalities	1	(100%)	(100%)	(100%)
Serious Injury Crashes	17	Midnight - 2:59am	Monday • Tuesday	February • June
		(29%)	(48%)	(48%)



House District 86 Distracted Driving-Related Crashes

- | | |
|--------------------|------------------------|
| Interstate Crashes | Non-interstate Crashes |
| Fatal | Fatal |
| Serious Injury | Serious Injury |

The blue gradient represents the density of all distracted driving-related crashes.



Available Crash Data - Calendar Year (CY)	CY 2019	CY 2020	CY 2021	CY 2022
Total Crashes	1111	1089	1243	1083
Fatal Crashes	5	6	1	4
Injury Crashes	538	553	668	500
Distracted Driving-Related Fatal Crashes	0	1	0	1
Percent of Distracted Driving-Related Fatal Crashes to Total Fatal Crashes	0%	17%	0%	25%
Distracted Driving-Related Injury Crashes	101	110	138	86
Percent of Distracted Driving-Related Injury Crashes to Total Injury Crashes	19%	20%	21%	17%